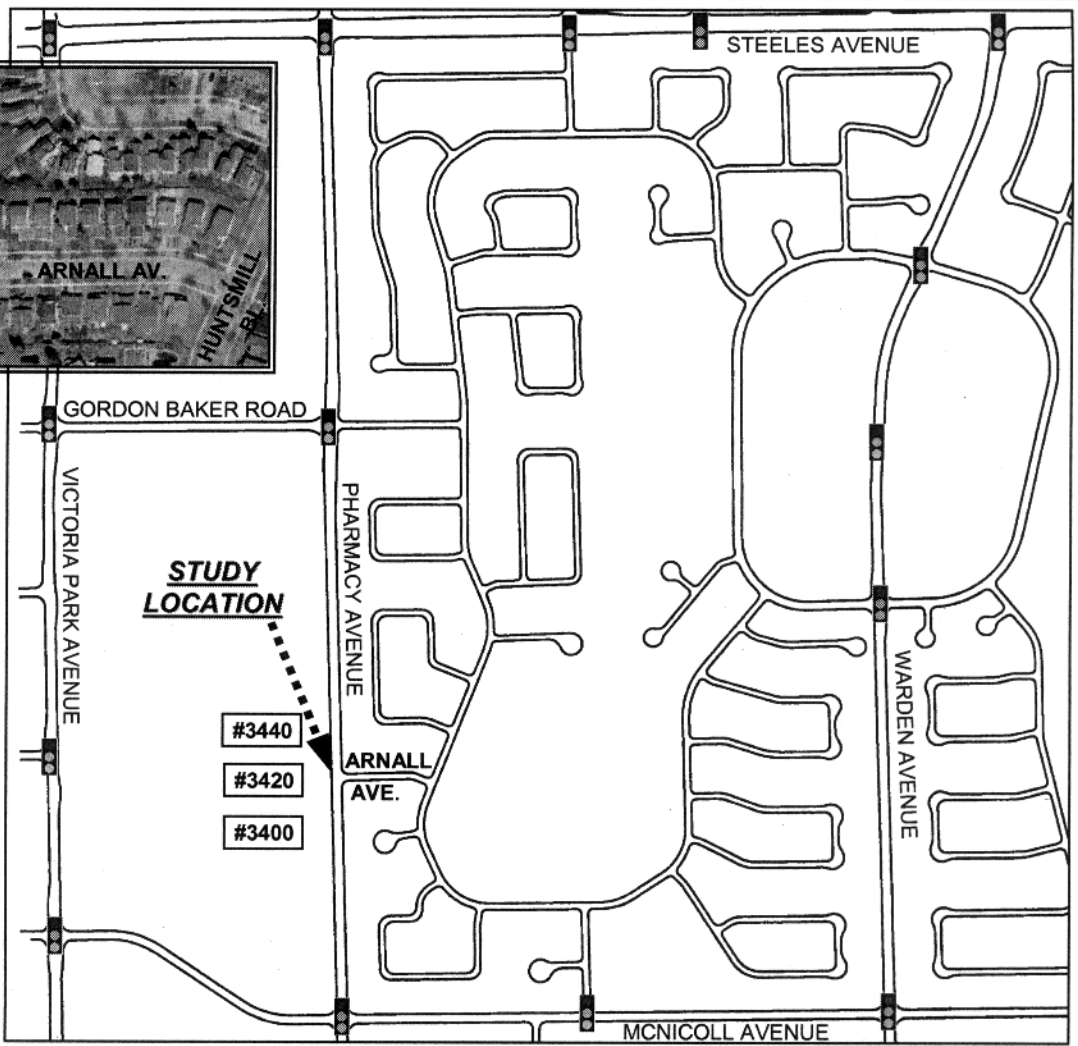


INSET - AERIAL VIEW
 PHARMACY AVENUE AT
 ARNALL AVENUE

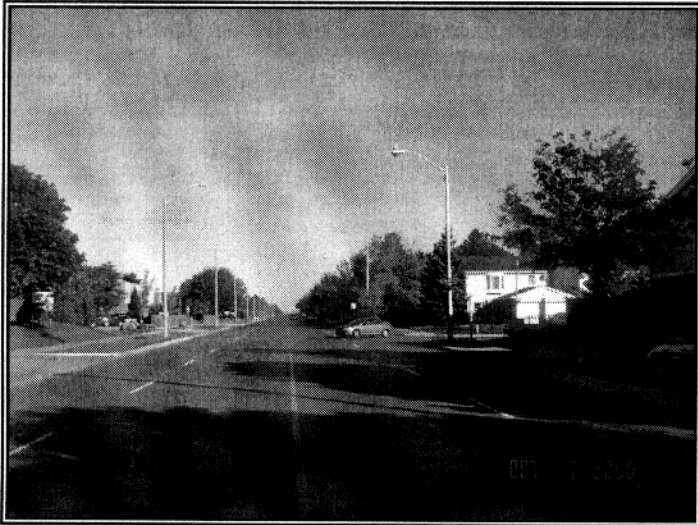


AREA MAP

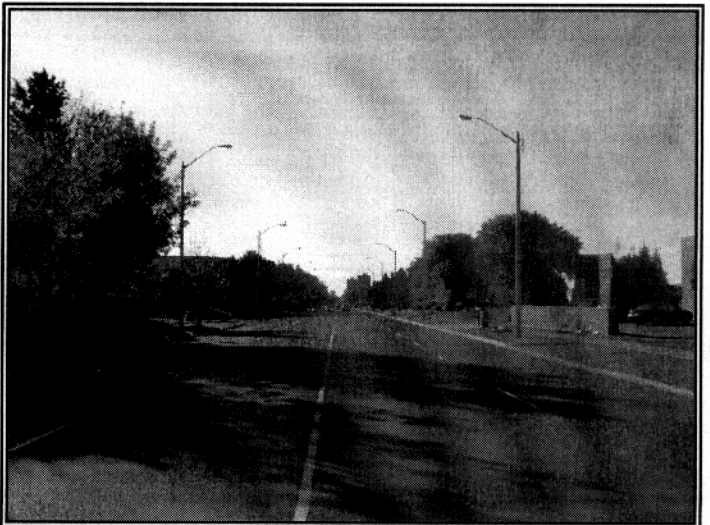
LEGEND



EXISTING
 TRAFFIC
 CONTROL
 SIGNAL



LOOKING NORTH ON PHARMACY AVENUE



LOOKING SOUTH ON PHARMACY AVENUE



TRANSPORTATION SERVICES
 Scarborough District

SCALE:	N.T.S.
DATE:	10/10/2008
DRAFTING:	KS

REQUEST FOR PEDESTRIAN CROSSING PROTECTION
PHARMACY AVENUE AT ARNALL AVENUE

FILE NUMBER: D08-2856479	
ATTACHMENT 1	WARD 39