



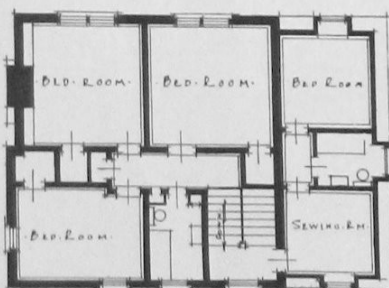
INGENUITY CREATES A HOUSE ON TWO LEVELS

The home of Forsey Page, Esq., Lawrence Park, Toronto

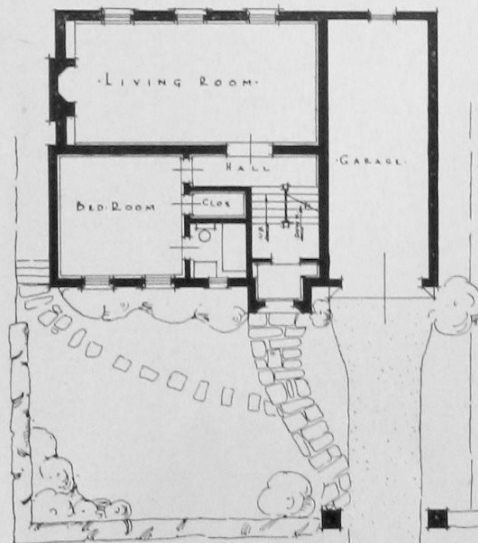
Forsey Page & Steele, Architects

In this original design for his own house Mr. Forsey Page has broken away from monotonous tradition. The house is gray brick, and from the front elevation seems to follow the English cottage design. At the back, however, it becomes a three-story building, as the ground slopes suddenly toward the Lawrence Park ravine, and the basement dining room opens out upon a terrace

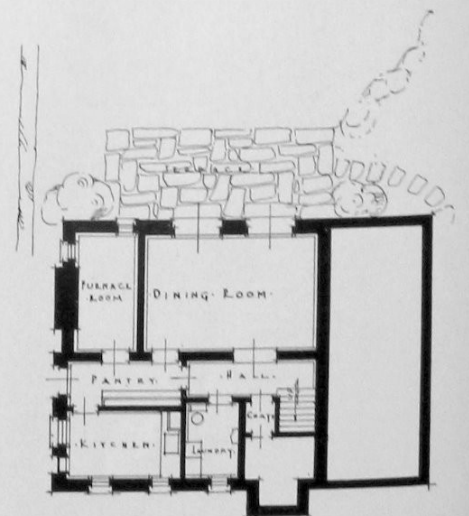
The design is compact, and, as a result of utilizing the basement for rooms that are ordinarily on the first floor, there are no less than nine important rooms included in the plans. In this age of oil heating, insulating and sound-proofing, the architect saw no reason why the dining room could not be comfortably placed beside the furnace room. The kitchen is also on this floor



SECOND FLOOR



FIRST FLOOR



GROUND FLOOR