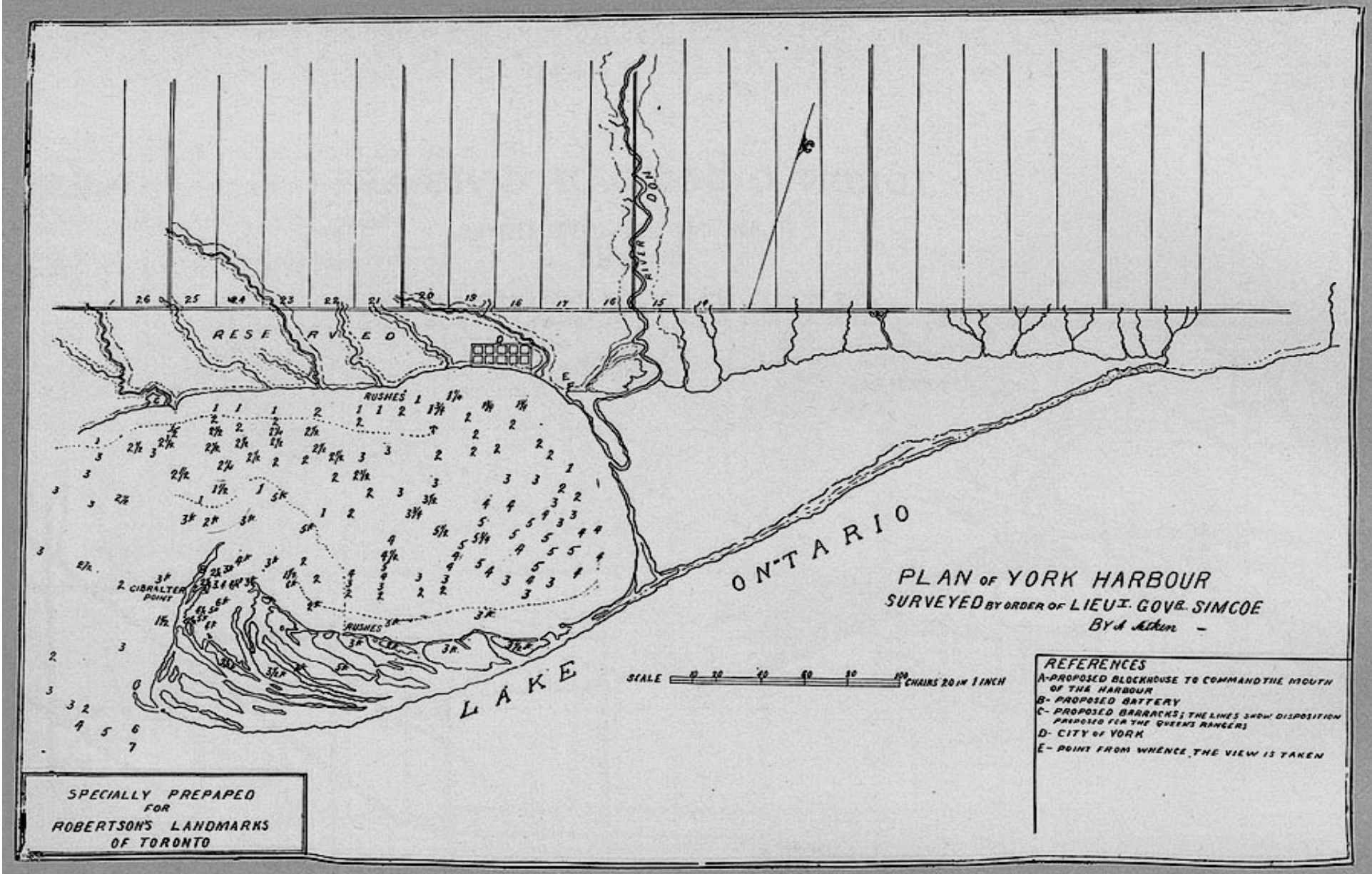


# Stay The Course

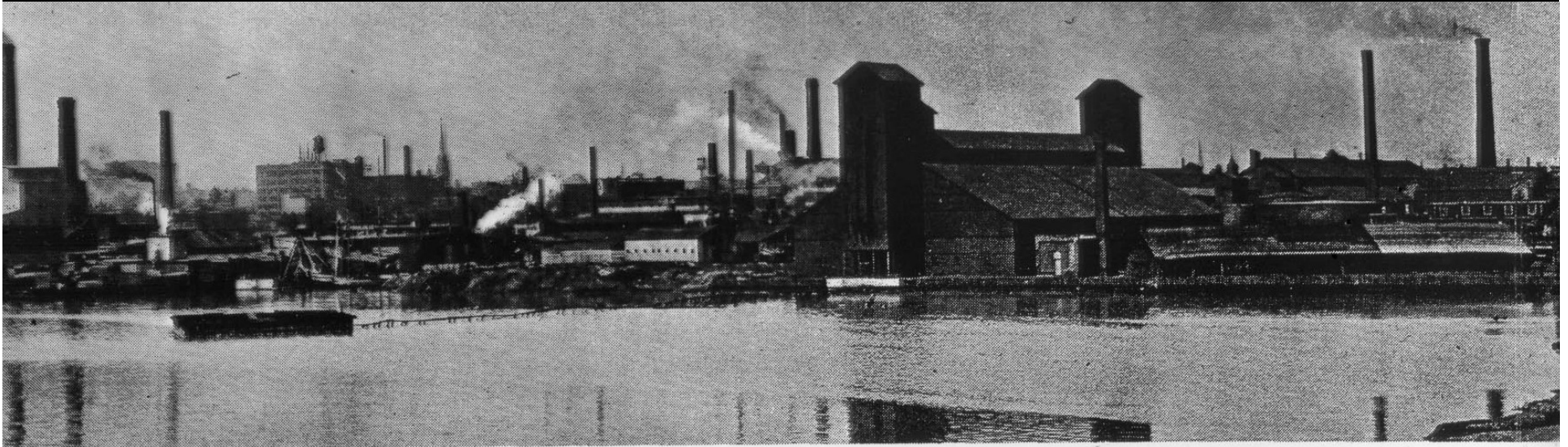


# Governor Simcoe's Waterfront Plan, 1793





# Industry and In-filling 1912 - 1931



*1916: Industrial north-east section of Toronto Harbour.*





# Toronto: Scale Comparison





# Premier Harris, Mayor Lastman, PM Chretien



\$1.5 billion Financial commitment to Toronto's Waterfront

# MAKING WAVES

Approved by City Council 2003

PRINCIPLES  
FOR BUILDING  
TORONTO'S  
WATERFRONT  
(A SUMMARY)

CENTRAL WATERFRONT PART II PLAN



**Central Waterfront**

**East Bayfront**

**West Don Lands**



**City Airport**

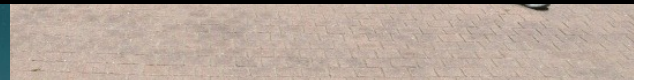
**Toronto's Inner Harbour**

**Lower Don Lands**





# EAST BAYFRONT







CENTRAL WATERFRONT





LOWER DON LANDS



# Chicago

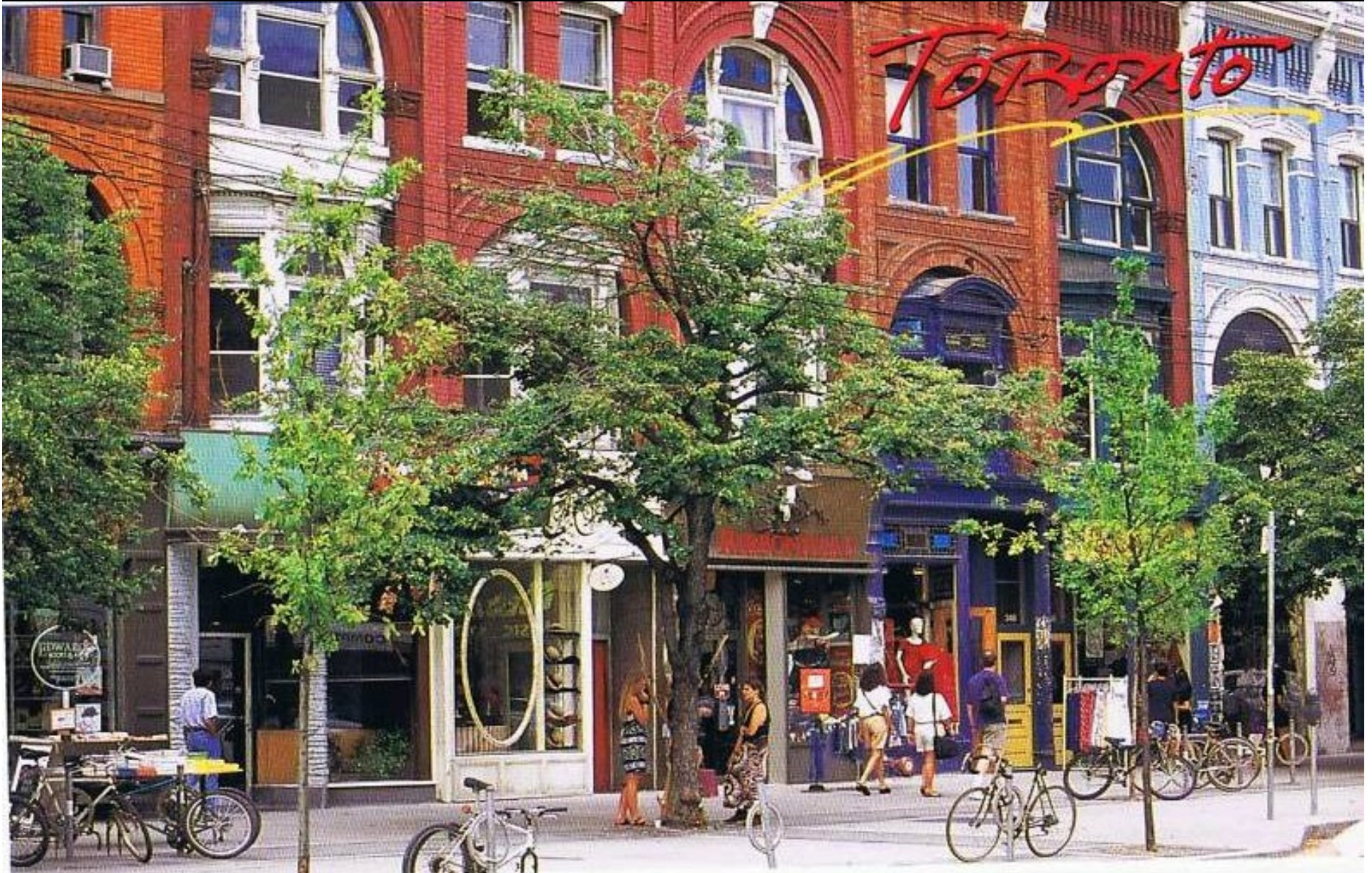


# West Edmonton Mall





# Toronto Life





Will We See The Light?

