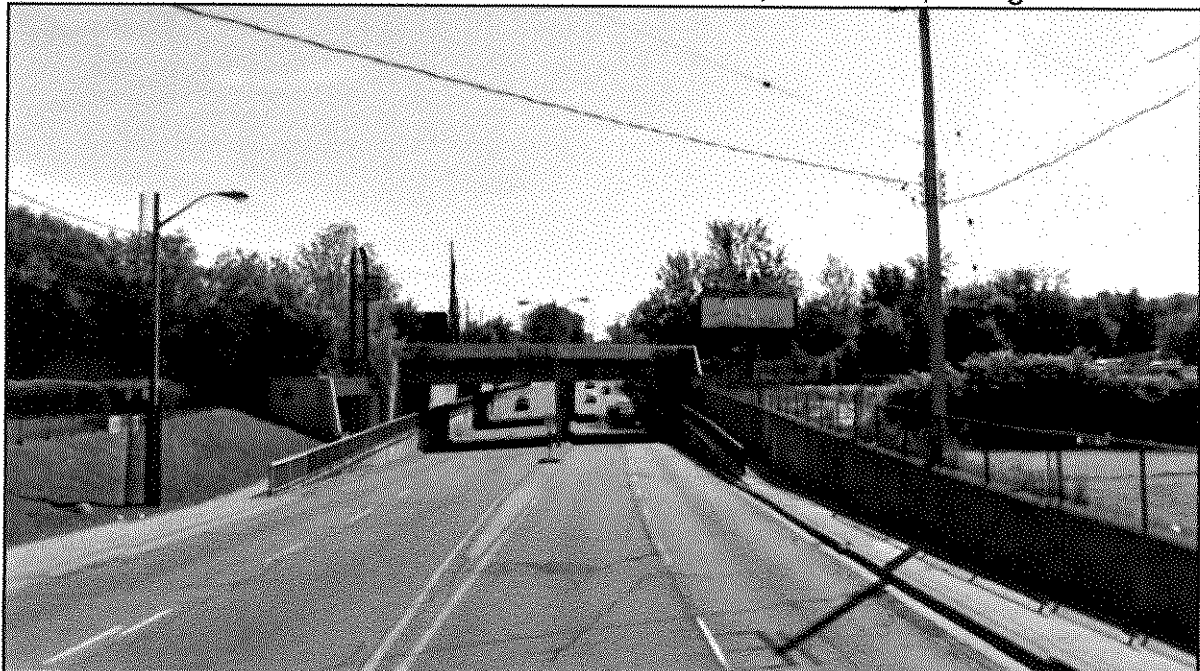


Appendix B:
Photo Renderings – Proposed Third Party Ground Signs

1. Kipling Avenue; 150 meters north of Belfield Road; east side; facing north



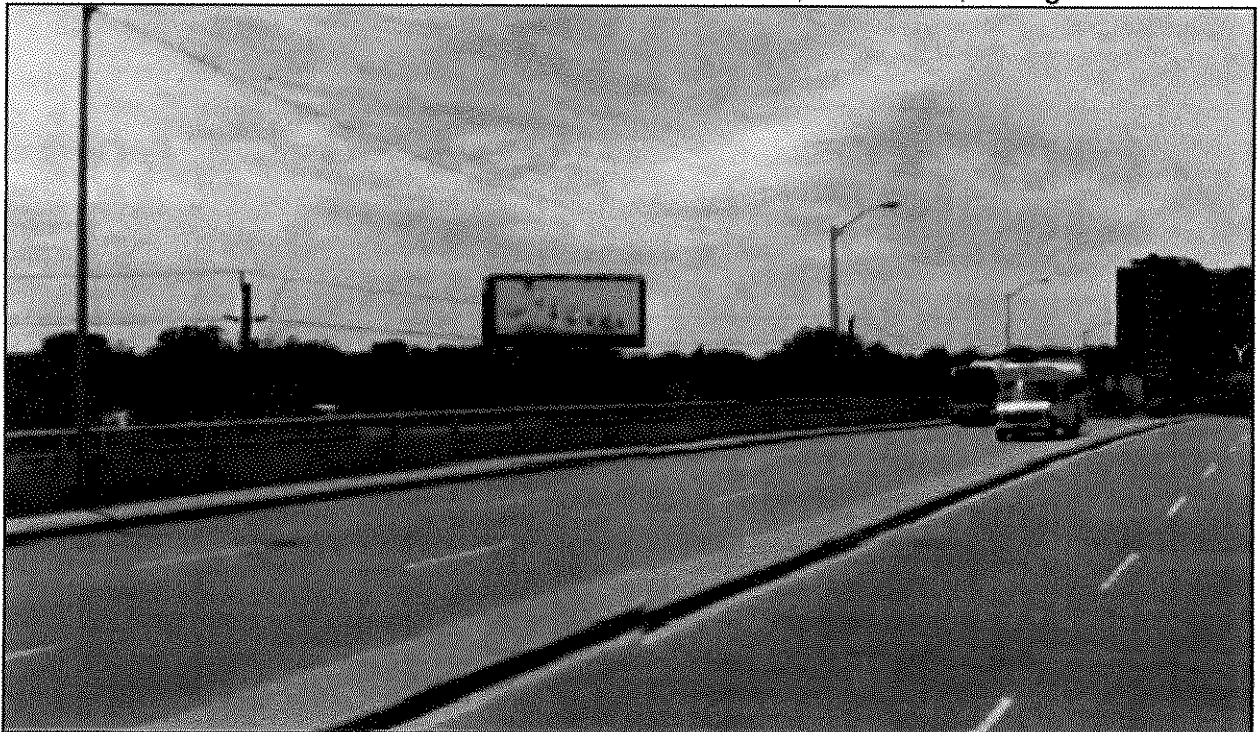
2. Lawrence Avenue West; east of Weston Road; south side; facing west



3. York Mills Road; 350 metres east of Leslie Street; south side; facing west



3. York Mills Road; 350 metres east of Leslie Street; south side; facing east



4. Leslie Street; 550 metres south of Hwy. 401; east side; facing north



4. Leslie Street; 550 metres south of Hwy. 401; east side; facing south



5. Victoria Park Avenue; 200 metres north of Gerrard Street East; east side; facing south-westerly



6. Eglinton Avenue East; 150 metres east of Bellamy Road; north side; facing east



6. Eglinton Avenue East; 150 metres east of Bellamy Road; north side; facing west



7. Steeles Avenue West; 200 metres west of Alness Street; south side; facing east



7. Steeles Avenue West; 200 metres west of Alness Street; south side; facing west



8. F.G. Gardiner Expressway; 200 metres east of Atlantic Avenue; north side; facing east



8. F.G. Gardiner Expressway; 200 metres east of Atlantic Avenue; north side; facing west



9. F.G. Gardiner Expressway; 425 metres east of Atlantic Avenue; north side; facing east



9. F.G. Gardiner Expressway; 425 metres east of Atlantic Avenue; north side; facing west



10. F.G. Gardiner Expressway; 325 metres east of Atlantic Avenue; north side; facing east



10. F.G. Gardiner Expressway; 325 metres east of Atlantic Avenue; north side; facing west

