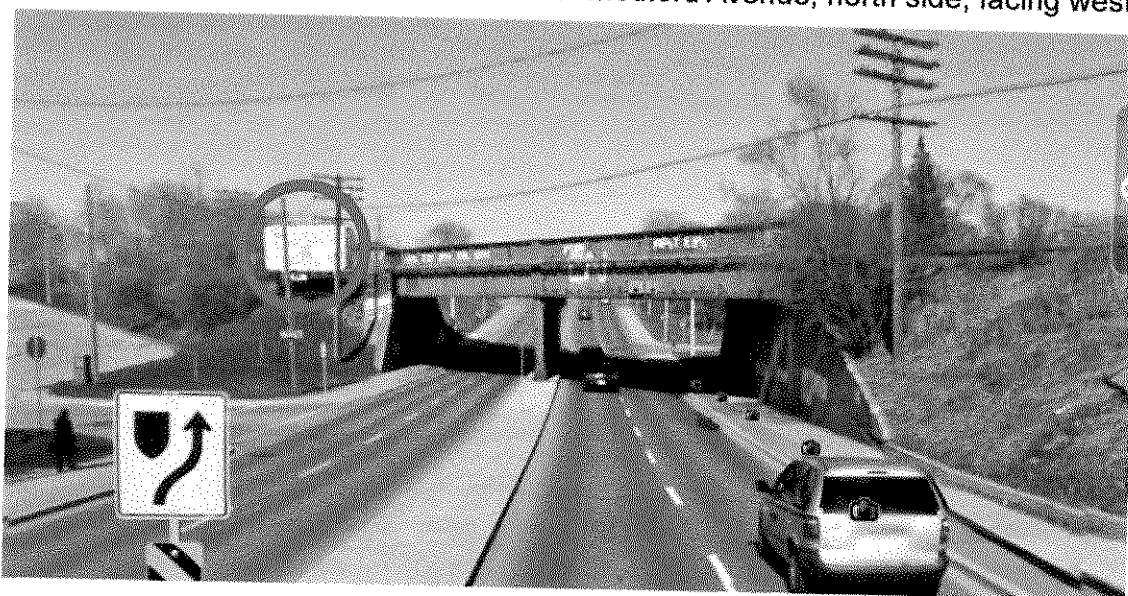


9. York Mills Road; 350 metres east of Leslie Street; south side; facing east



10. Danforth Avenue; 10 metres east of Medford Avenue; north side; facing west



11. Danforth Avenue; opposite Medford Avenue; south side; facing west



12. Woodbine Avenue; 155 metres north of Gerrard Street East; west side; facing north



12. Woodbine Avenue; 155 metres north of Gerrard Street East; west side; facing south



13. Leslie Street; 300 metres south of Hwy. 401; east side; facing north

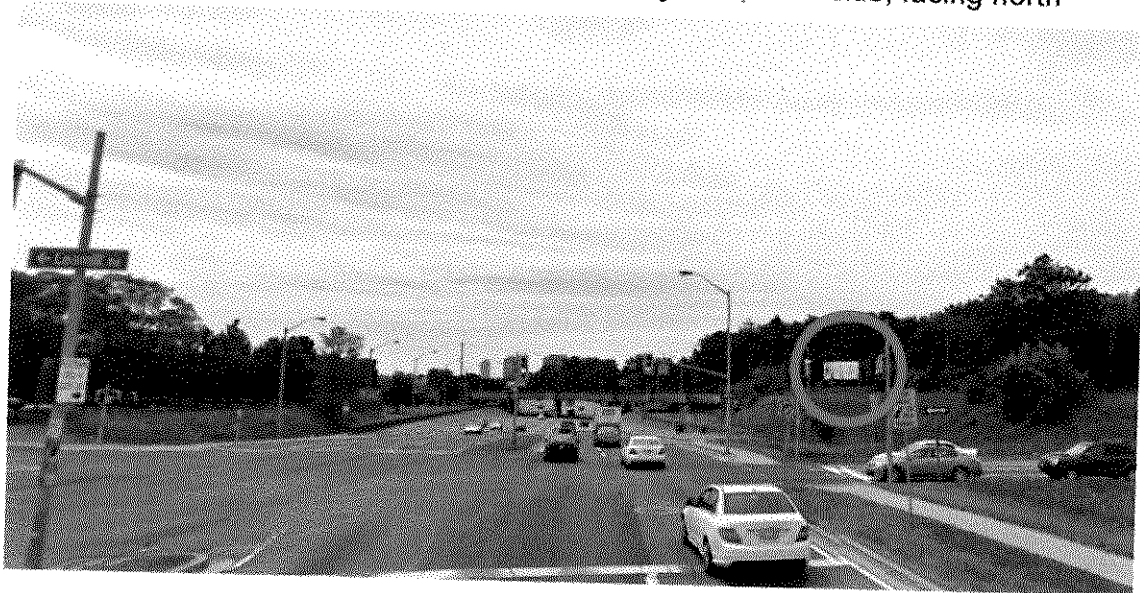




14. Leslie Street; 300 metres south of Hwy. 401; east side; facing south



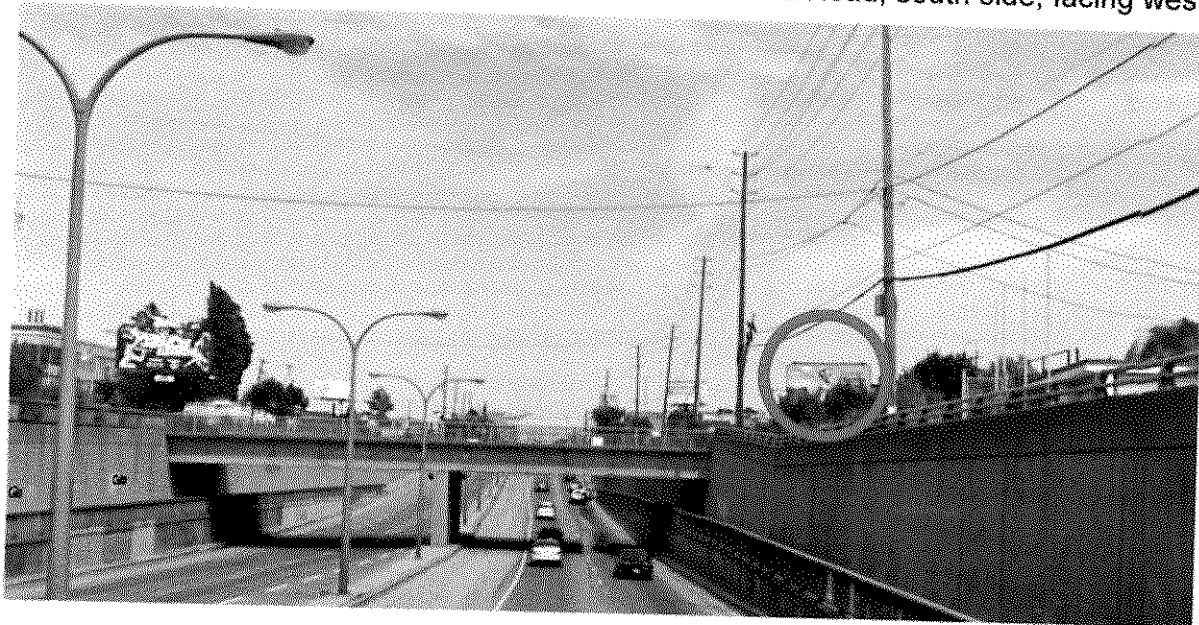
15. Leslie Street; 250 metres south of Hwy. 401; west side; facing north



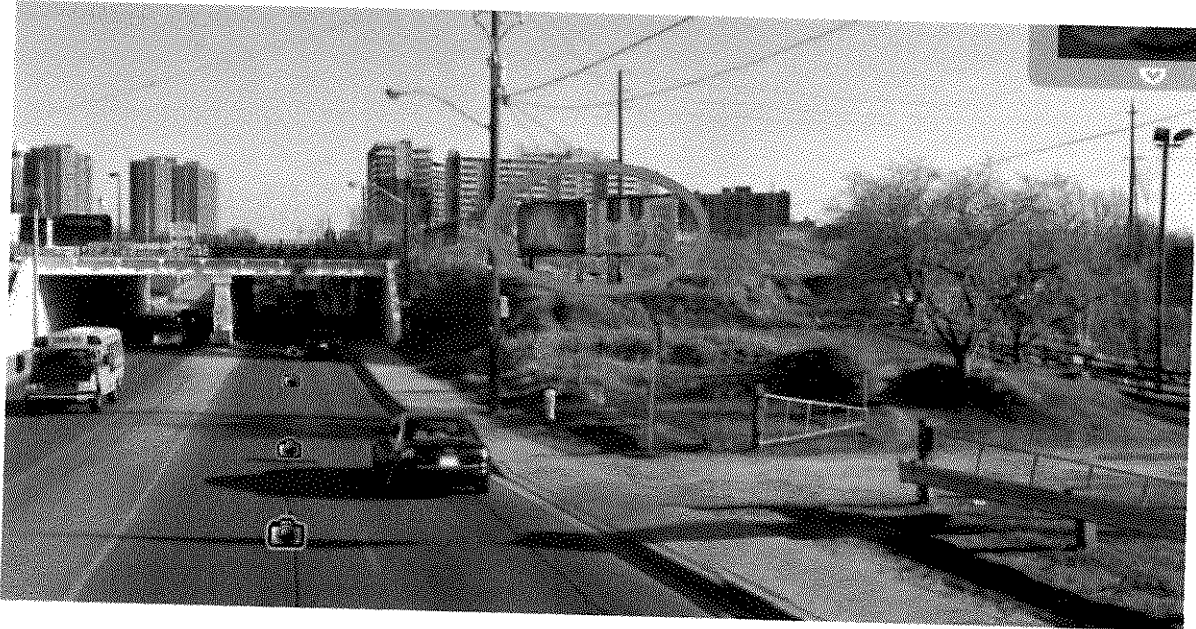
16. Lawrence Avenue West; 250 metres west of Caledonia Road; south side; facing east



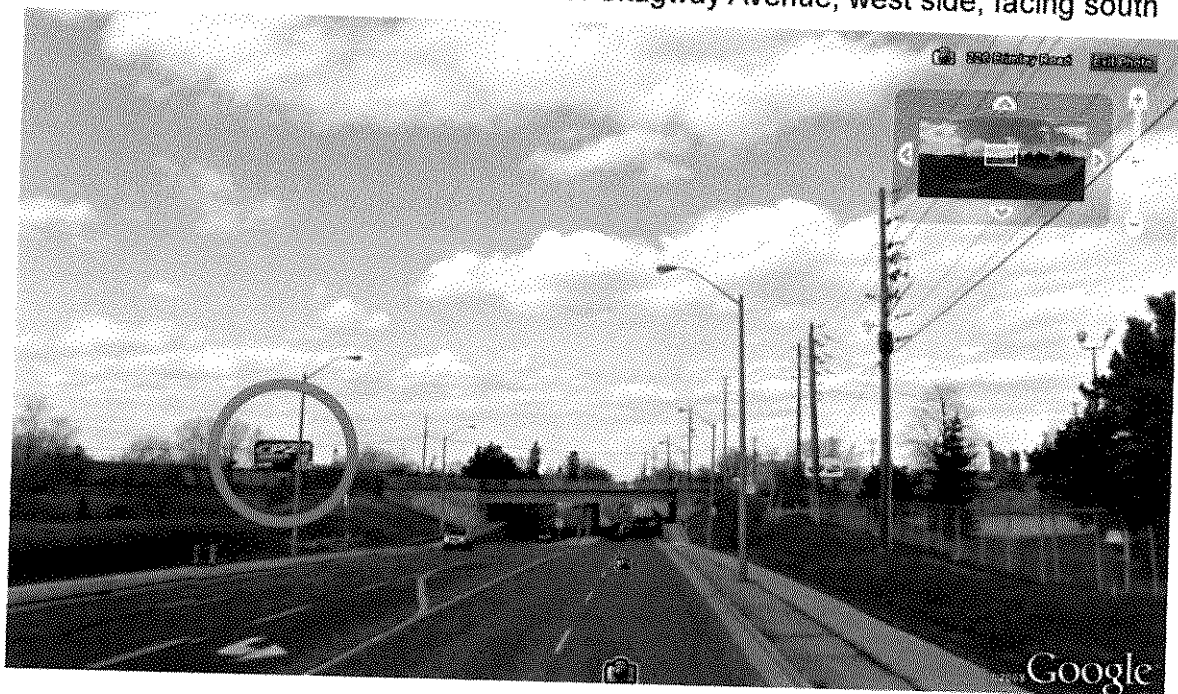
16. Lawrence Avenue West; 250 metres west of Caledonia Road; south side; facing west



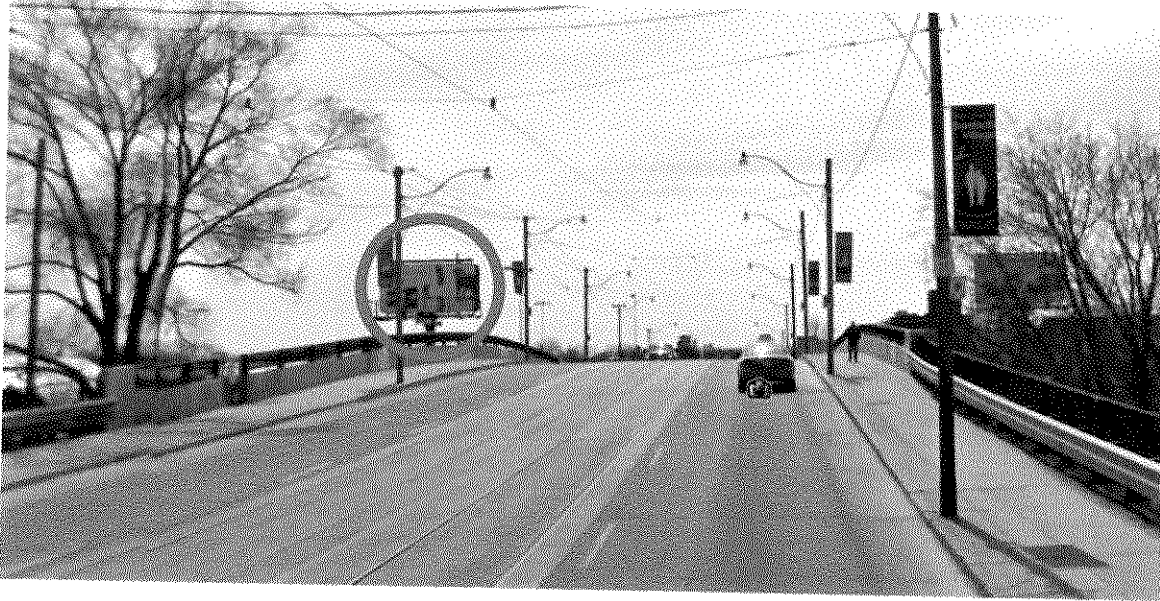
17/18. Victoria Park Avenue; 200 metres north of Gerrard Street East; east side; facing south westerly



19. Brimley Road; 190 metres north of Skagway Avenue; west side; facing south



20. Main Street; 225 metres north of Gerrard Street East; east side; facing north



20. Main Street; 225 metres north of Gerrard Street East; east side; facing south

