

30. The Queensway; east of Parkside Drive; south side; facing northeast



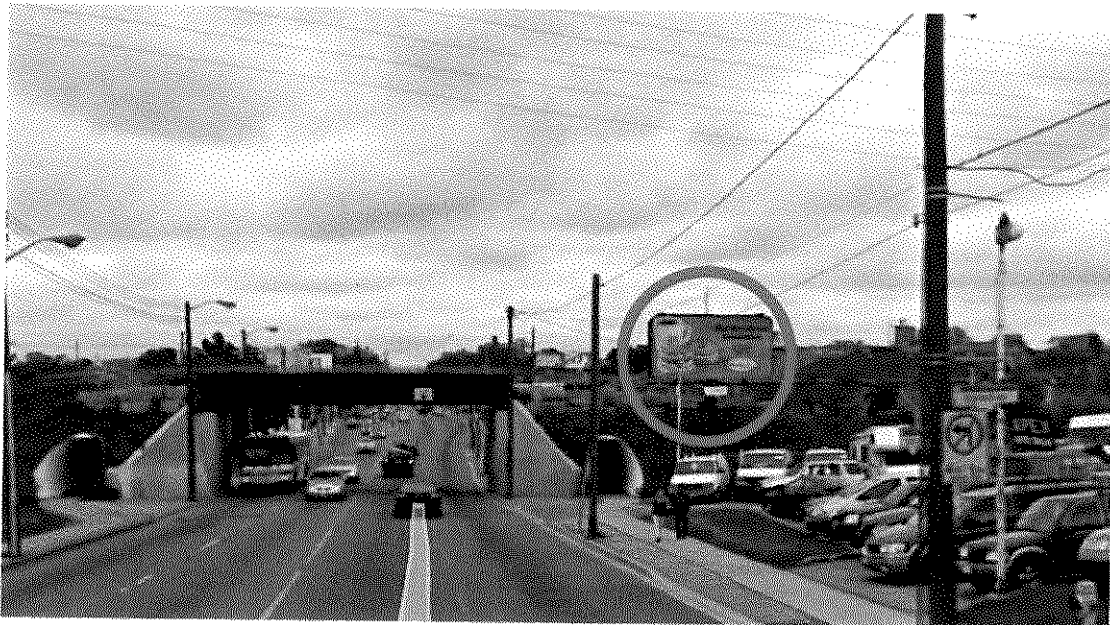
31. Kipling Avenue; south of Towns Road; east side; facing north



32. Dufferin Street; north of Hopewell Avenue; east side; facing north



32. Dufferin Street; north of Hopewell Avenue; east side; facing south



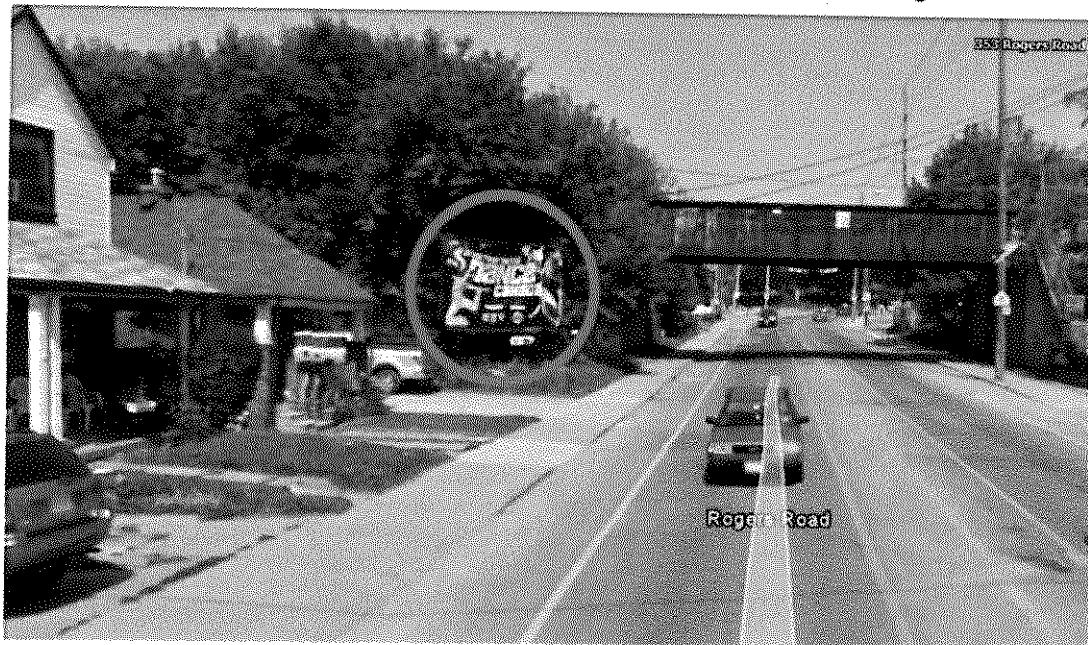
33. Gardiner Expressway; 425 metres east of Atlantic Avenue; north side; facing east



33. Gardiner Expressway; 425 metres east of Atlantic Avenue; north side; facing west



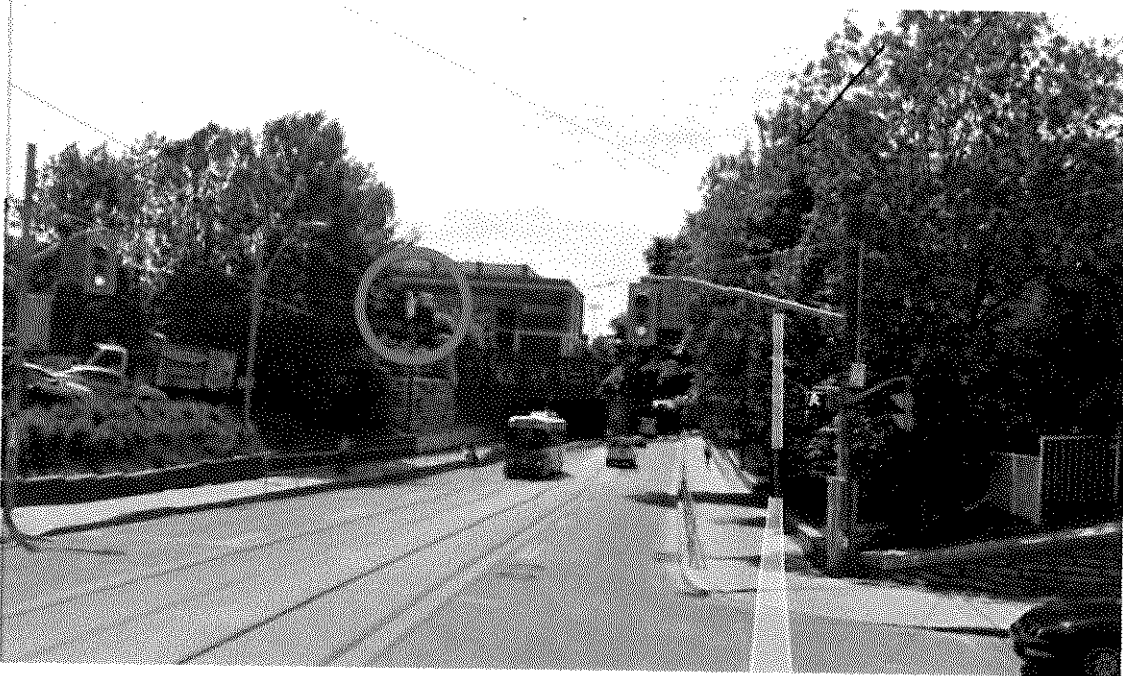
34. Rogers Road; east of Blackthorne Avenue; north side; facing west



35. Rogers Road; west of Caledonia Road; north side; facing east



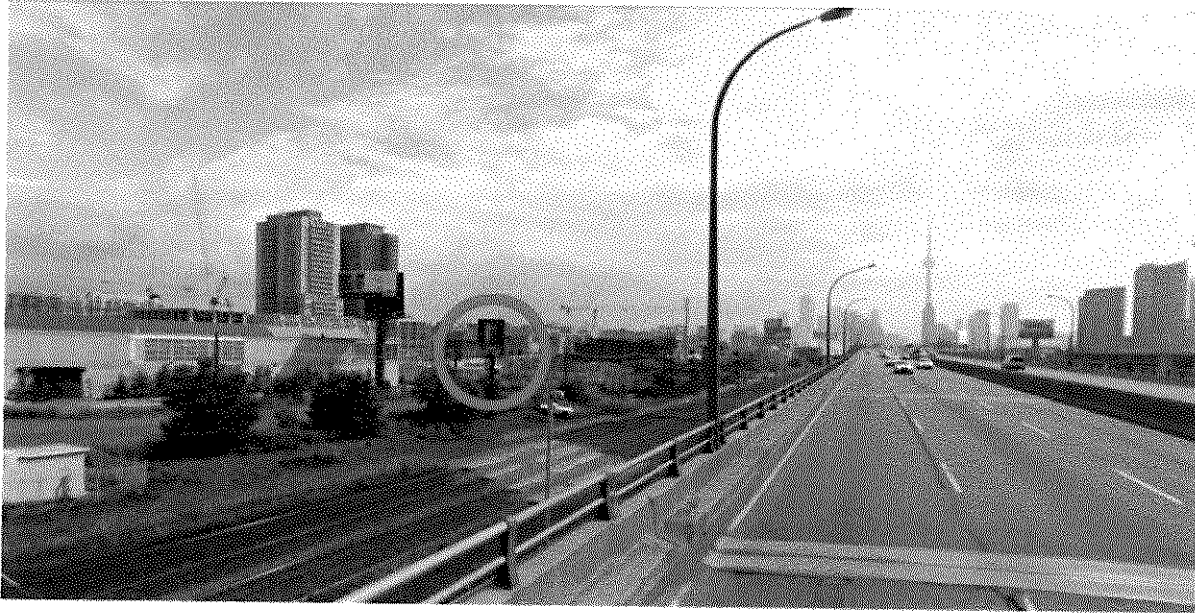
36. King Street West; 60 metres east of Atlantic Avenue; south side; facing east



37. Gardiner Expressway; 325 metres east of Atlantic Avenue; north side; facing east



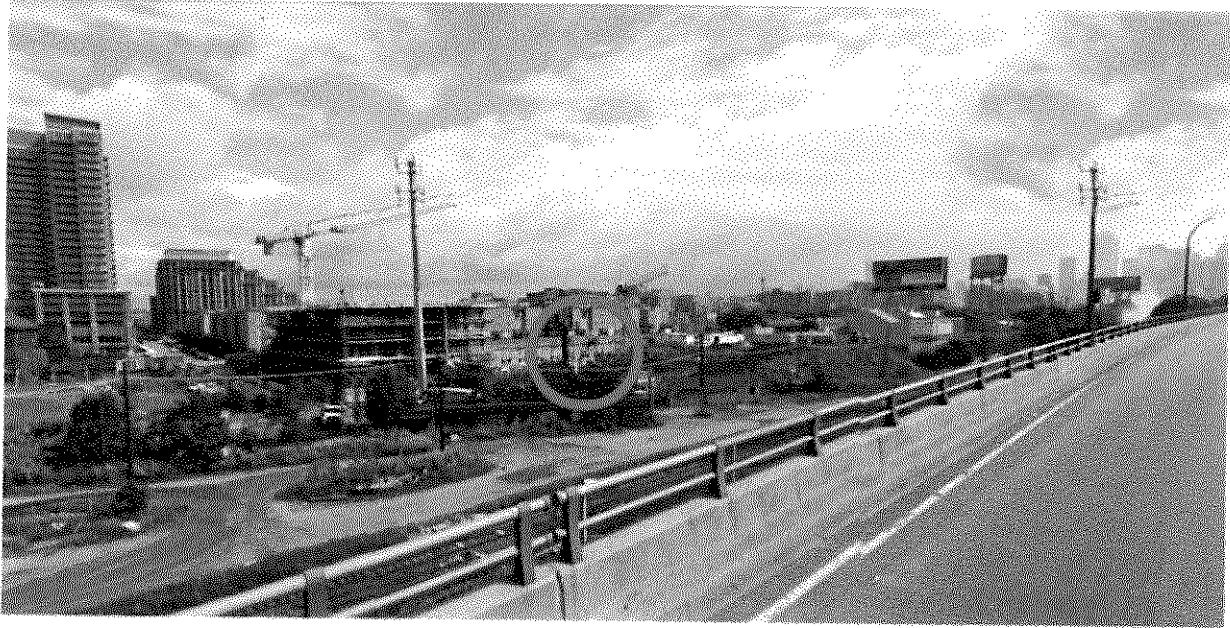
37. Gardiner Expressway; 325 metres east of Atlantic Avenue; north side; facing west



38. Gardiner Expressway; 200 metres west of Strachan Avenue; north side; facing east



38. Gardiner Expressway; 200 metres west of Strachan Avenue; north side; facing west



39. Dundas Street East; west of Logan Avenue; south side; facing east



40. Greenwood Avenue; north of Walpole Avenue; east side; facing south

