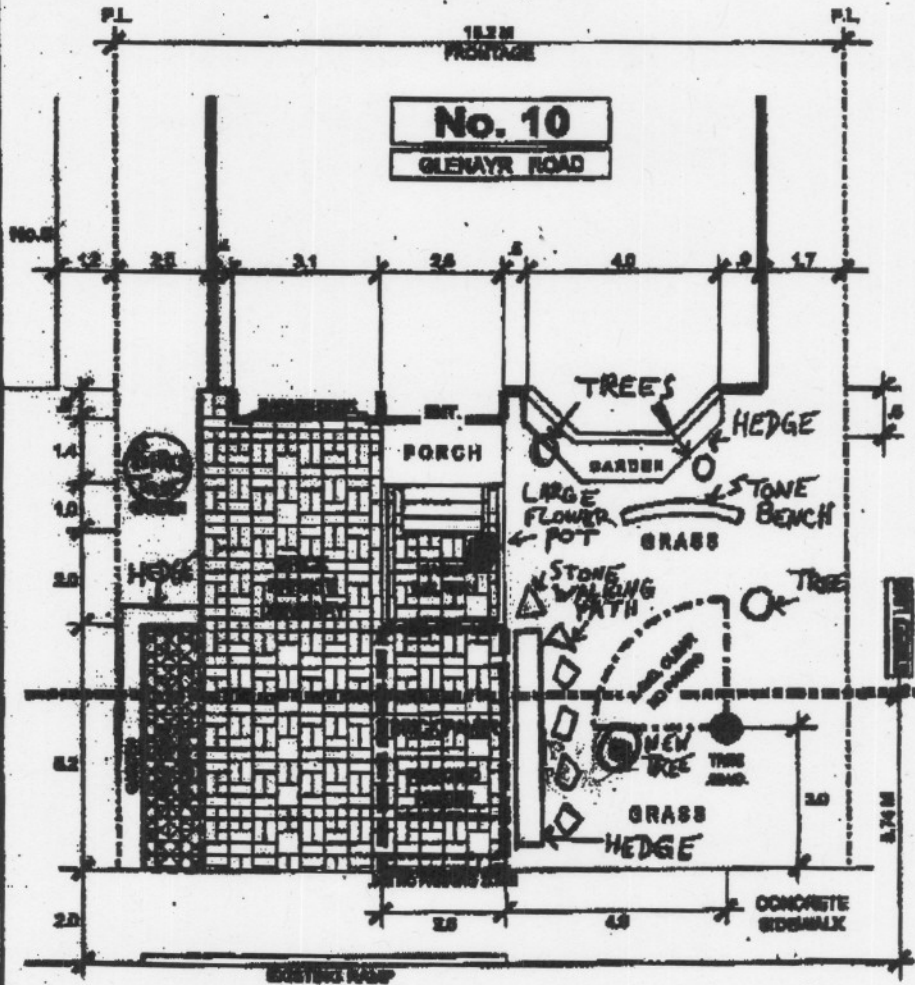


FRONT YARD PARKING APPEAL - 10 GLENAYR ROAD

APPENDIX 'D'



GLENAYR ROAD

TRANSPORTATION SERVICES DIVISION TORONTO AND EAST YORK DISTRICT RIGHT OF WAY MANAGEMENT OFF STREET PARKING									
FRONT YARD PARKING CHAPTER 918 F.Y.P. - 108120									
TOTAL PARKING AREA ON STREET ALLOWANCE	0.7 M <sup>2</sup>	PRIVATE PROPERTY				STREET ALLOWANCE			
		AREA M <sup>2</sup>	%	CODE	AREA M <sup>2</sup>	%	CODE	REMARKS	
TOTAL AREA		61.1			20.6				
LANDSCAPED OPEN SPACE		69.0	75	200 sqm	21.1	65	200 sqm	AREA 17 OF	PLAN
FRONT YARD		22.1	36	200 sqm	21.8	36	200 sqm	AREA 17 OF	PLAN
SOFT LANDSCAPING		26.9	61	100 sqm	22.3	60	100 sqm		
DRAWN BY: R. MORSON		DATE: APRIL 27 07				SCALE: 1:100			



\* Please note the additional landscaping that is now in place. No additional changes are proposed.