
















# Economic Dashboard

Economic Development Committee

November 8, 2012



# Indicator Highlights

	Geography	Same Month Last Year	Previous Month	Most Recent Month	Status
<b>Unemployment Rate</b>	Toronto	8.8%	9.7%	9.7%	
	September 2012 (3 Month Average SA)	Canada	7.2%	7.3%	7.3%
<b>Participation Rate</b>	Toronto	64.2%	65.9%	66.3%	
	September 2012 (3 Month Average SA)	Canada	66.8%	66.7%	66.6%
<b>Total Employed Residents</b>	Toronto	1,264.2	1,290.0	1,295.7	
	September 2012 (3 Month Average SA)	Canada	17,356.1	17,500.9	17,519.5
<b>Total Value of Building Permits</b> August 2012 (3MMA)	Toronto	\$412 million	\$465 million	\$474 million	
	Canada	\$7.0 billion	\$7.9 billion	\$7.7 billion	
<b>High Rise Buildings Under Construction</b> October 2012	Toronto	163	184	183	
<b>Office Vacancy Rate</b> Q3 2012	Toronto	5.6%	5.4%	5.4%	
<b>Average House Price</b> Sep-12	Toronto	\$495,686	\$497,769	\$547,901	
	Canada	\$351,898	\$350,192	\$355,777	
<b>Business Bankruptcies</b> Q2 2012	Toronto CMA	172	145	118	
	Canada	957	883	823	
<b>Employment Insurance Recipients</b> August 2012	Toronto	33,030	28,840	30,160	
	Canada	515,320	470,020	482,990	
<b>Consumer Price Index</b> September 2012 (2002=100)	Toronto	121.2	121.8	122.1	
	Canada	120.6	121.8	122.0	
<b>Retail Sales</b> August 2012	Toronto CMA	\$5.6 billion	\$5.4 billion	\$5.6 billion	
	Canada	\$39.5 billion	\$40.1 billion	\$41.2 billion	



Negative

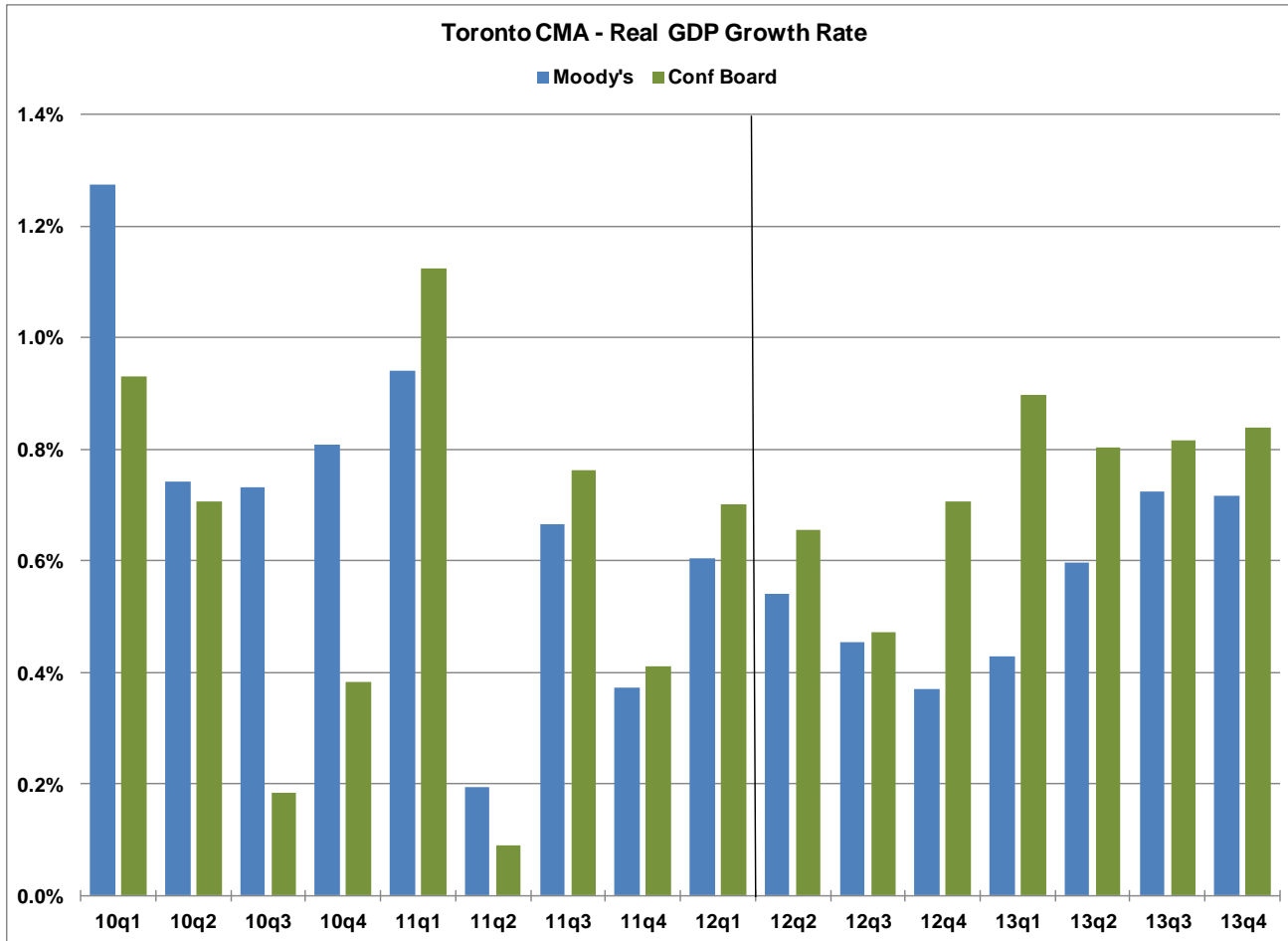


Caution



Positive

# Real GDP Growth Toronto CMA



# Percent Change in GDP

## Toronto CMA

	Moody's	Conference Board
11q1	0.94%	1.12%
11q2	0.19%	0.09%
11q3	0.67%	0.76%
11q4	0.37%	0.41%
12q1	0.60%	0.70%
12q2	0.54%	0.65%
12q3	0.45%	0.47%
12q4	0.37%	0.71%
13q1	0.43%	0.90%
13q2	0.60%	0.80%
13q3	0.73%	0.82%
13q4	0.72%	0.84%



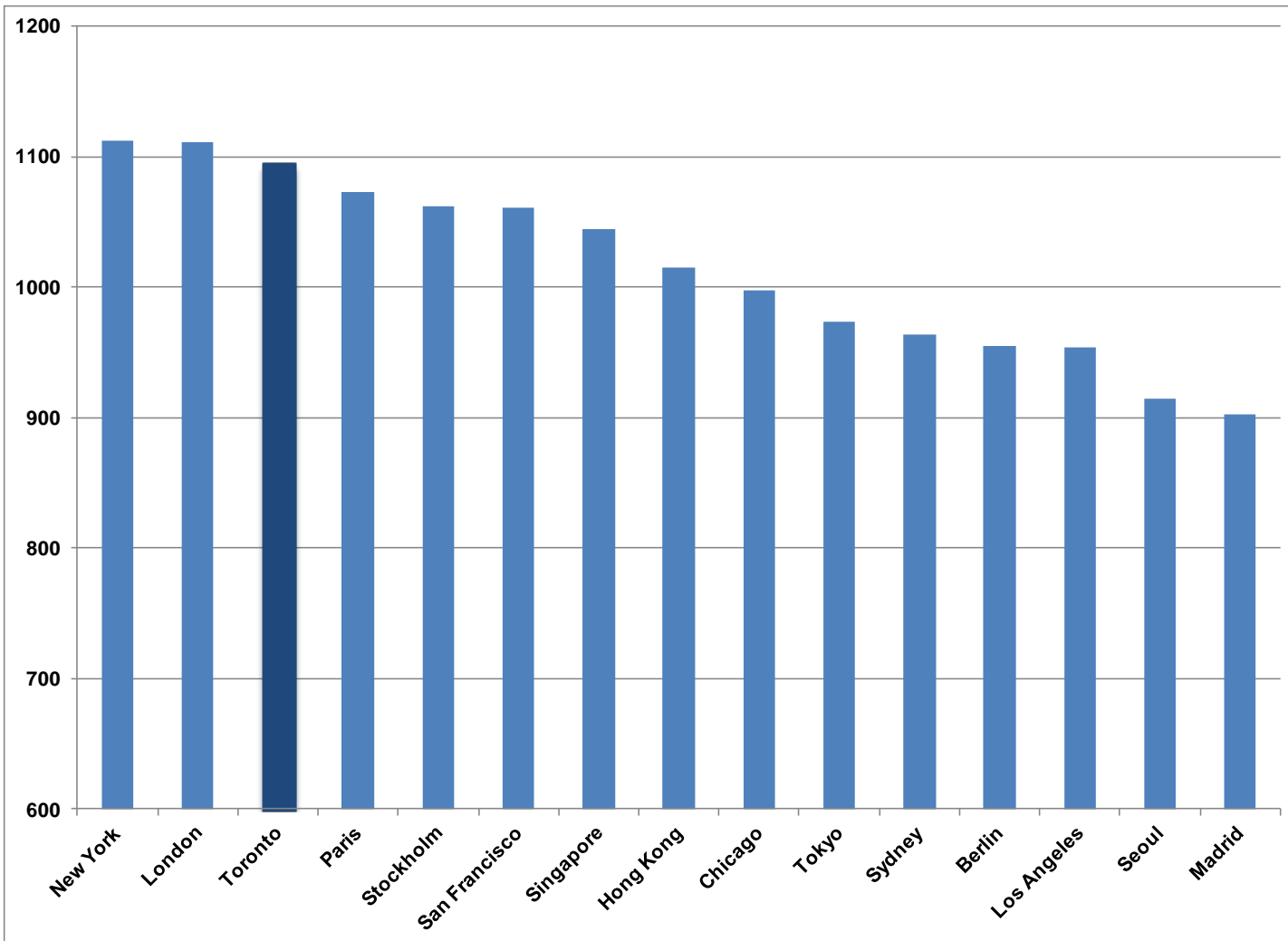
# How Toronto Ranks - 2012

- Benchmarking Global City Competitiveness (The Economist): Toronto is ranked 12<sup>th</sup> of 120 global cities
- Smart Cities (Fast Company Magazine): Toronto ranked first in North America and second in the world
- Toronto #4 of World's Top Tech Hubs: Toronto is ranked 4<sup>th</sup> among 25 cities worldwide as a technology hub by Startup Genome, a project that aims to increase the success rate of start-ups and accelerate the pace of innovation globally.
- Top Cities to Find an IT Job in 2012 (Modis): Toronto is ranked 2<sup>nd</sup> in North America

# How Toronto Ranks - 2011

- Global Economic Power Index (The Atlantic Cities):  
Toronto is ranked the 12th most powerful city globally
- Global Financial Centres Index (Z/Yen Group):  
Toronto is 10<sup>th</sup> among global financial centres
- Economic Momentum (CIBC): Fastest in Canada
- Economist Intelligence Unit: Toronto ranked 4<sup>th</sup> most liveable city in the world

# PWC "Cities of Opportunity" 2012

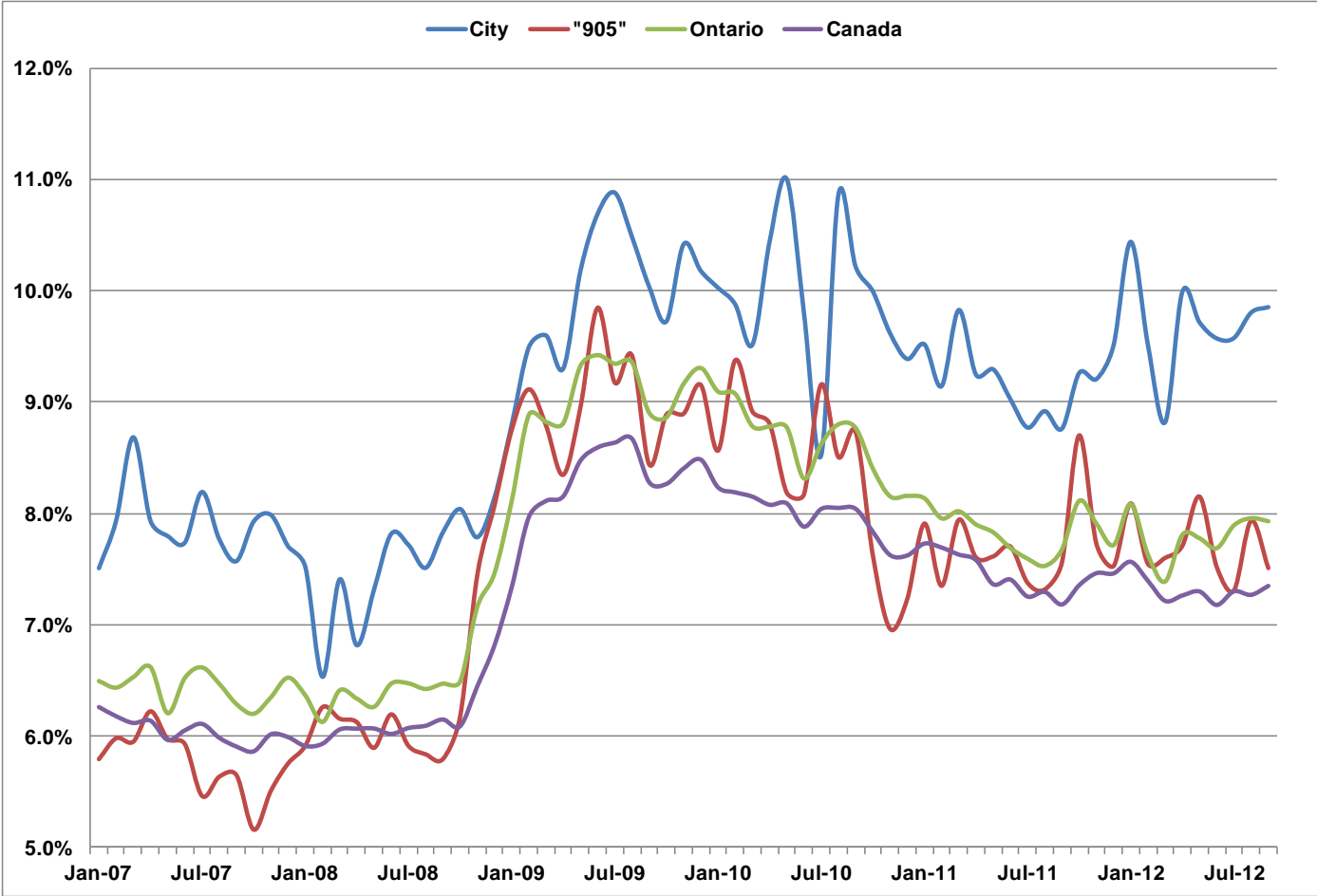


# PWC - Top 3 for Each Dimension vs. Toronto

	1st	2nd	3rd	Toronto
Intellectual capital and innovation	Stockholm	Toronto	Paris	2nd
Technology readiness	Seoul	San Francisco	New York	11th
Transportation and infrastructure	Singapore	Toronto	Seoul	2nd
Health, safety, and security	Stockholm	Toronto	Sydney	2nd
Sustainability and the natural environment	Sydney	Toronto	San Francisco	2nd
Economic clout	Beijing	Paris	New York	7th
Ease of doing business	Singapore	Hong Kong	New York	5th
Cost	Berlin	Seoul	Kuala Lumpur	11th
Demographics and livability	Paris	Hong Kong	San Francisco	5th
City gateway	London	Paris	Beijing	18th



# Unemployment Rate



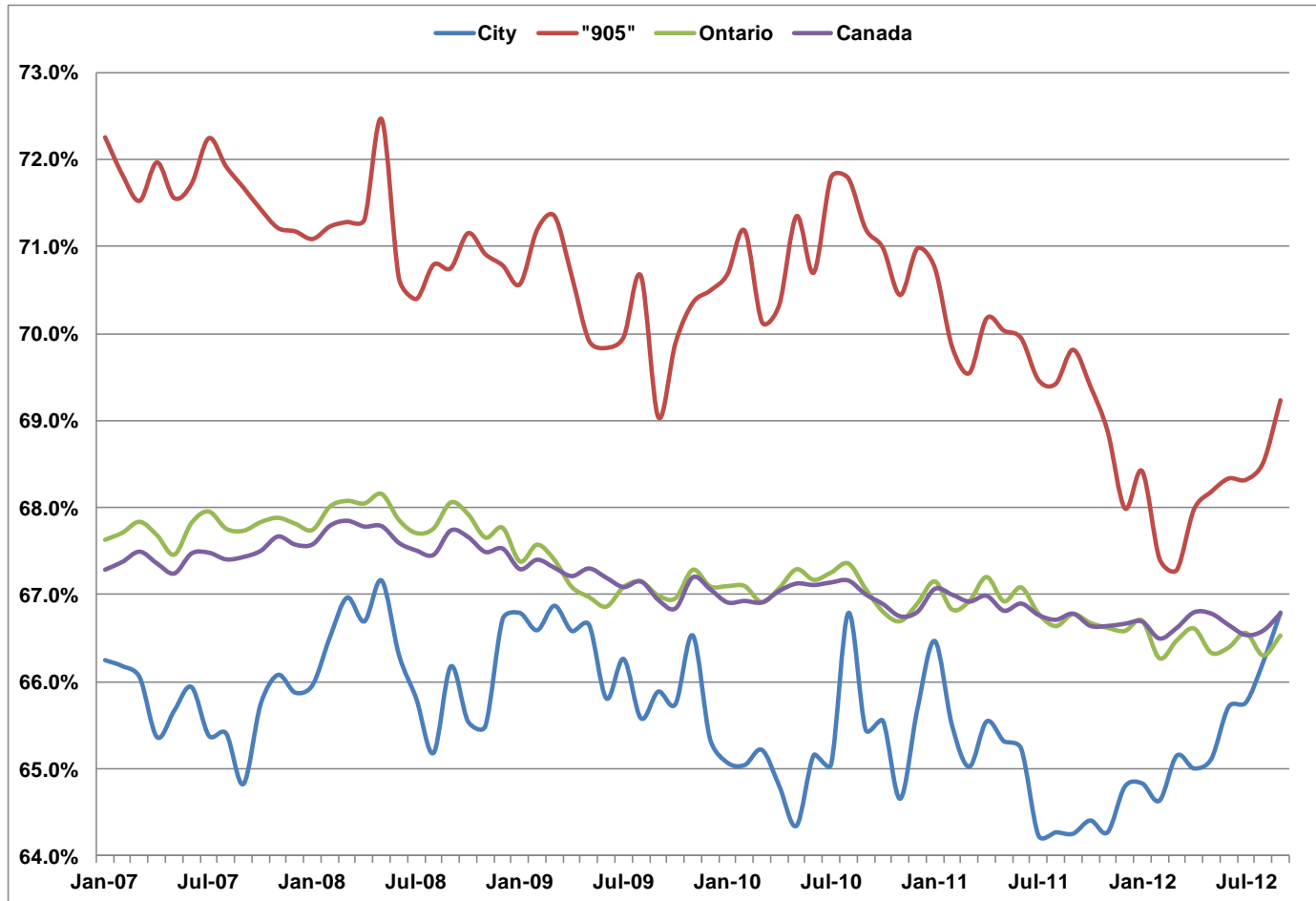
Source : Statistics Canada – Labour Force Survey  
Seasonally Adjusted Monthly



# Unemployment Rate

	<b>City</b>	<b>"905"</b>	<b>Ontario</b>	<b>Canada</b>
<b>Sep-11</b>	<b>8.8%</b>	<b>7.6%</b>	<b>7.7%</b>	<b>7.2%</b>
<b>Oct-11</b>	<b>9.3%</b>	<b>8.7%</b>	<b>8.1%</b>	<b>7.4%</b>
<b>Nov-11</b>	<b>9.2%</b>	<b>7.7%</b>	<b>7.9%</b>	<b>7.5%</b>
<b>Dec-11</b>	<b>9.5%</b>	<b>7.5%</b>	<b>7.7%</b>	<b>7.5%</b>
<b>Jan-12</b>	<b>10.4%</b>	<b>8.1%</b>	<b>8.1%</b>	<b>7.6%</b>
<b>Feb-12</b>	<b>9.5%</b>	<b>7.5%</b>	<b>7.6%</b>	<b>7.4%</b>
<b>Mar-12</b>	<b>8.8%</b>	<b>7.6%</b>	<b>7.4%</b>	<b>7.2%</b>
<b>Apr-12</b>	<b>10.0%</b>	<b>7.7%</b>	<b>7.8%</b>	<b>7.3%</b>
<b>May-12</b>	<b>9.7%</b>	<b>8.2%</b>	<b>7.8%</b>	<b>7.3%</b>
<b>Jun-12</b>	<b>9.6%</b>	<b>7.5%</b>	<b>7.7%</b>	<b>7.2%</b>
<b>Jul-12</b>	<b>9.6%</b>	<b>7.3%</b>	<b>7.9%</b>	<b>7.3%</b>
<b>Aug-12</b>	<b>9.8%</b>	<b>7.9%</b>	<b>8.0%</b>	<b>7.3%</b>
<b>Sep-12</b>	<b>9.9%</b>	<b>7.5%</b>	<b>7.9%</b>	<b>7.4%</b>

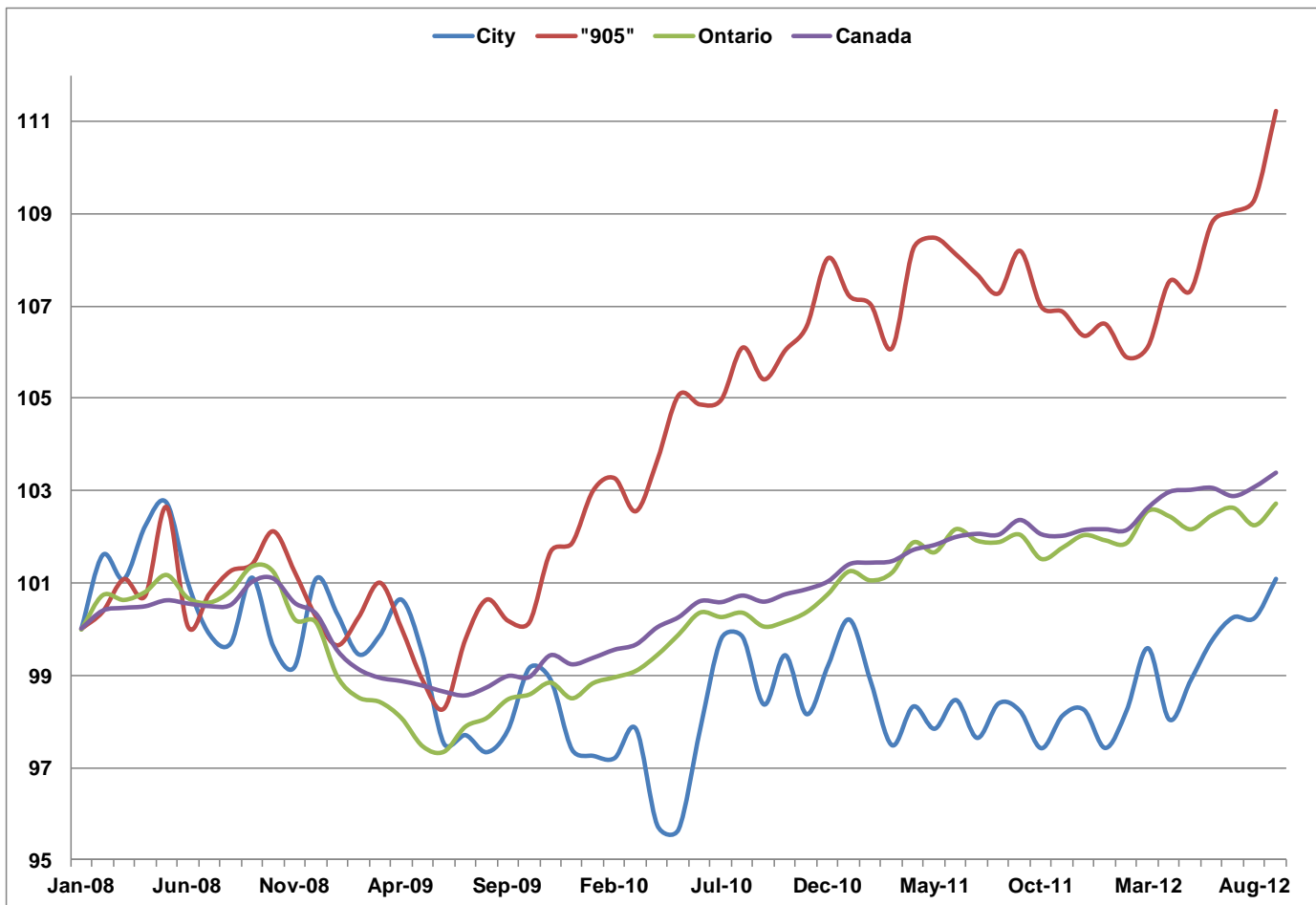
# Participation Rate



# Participation Rate

	<b>City</b>	<b>"905"</b>	<b>Ontario</b>	<b>Canada</b>
<b>Sep-11</b>	<b>64.2%</b>	<b>69.8%</b>	<b>66.8%</b>	<b>66.8%</b>
<b>Oct-11</b>	<b>64.4%</b>	<b>69.4%</b>	<b>66.7%</b>	<b>66.6%</b>
<b>Nov-11</b>	<b>64.3%</b>	<b>68.9%</b>	<b>66.6%</b>	<b>66.6%</b>
<b>Dec-11</b>	<b>64.8%</b>	<b>68.0%</b>	<b>66.6%</b>	<b>66.7%</b>
<b>Jan-12</b>	<b>64.8%</b>	<b>68.4%</b>	<b>66.7%</b>	<b>66.7%</b>
<b>Feb-12</b>	<b>64.6%</b>	<b>67.4%</b>	<b>66.3%</b>	<b>66.5%</b>
<b>Mar-12</b>	<b>65.1%</b>	<b>67.3%</b>	<b>66.5%</b>	<b>66.6%</b>
<b>Apr-12</b>	<b>65.0%</b>	<b>68.0%</b>	<b>66.6%</b>	<b>66.8%</b>
<b>May-12</b>	<b>65.1%</b>	<b>68.2%</b>	<b>66.3%</b>	<b>66.8%</b>
<b>Jun-12</b>	<b>65.7%</b>	<b>68.3%</b>	<b>66.4%</b>	<b>66.7%</b>
<b>Jul-12</b>	<b>65.8%</b>	<b>68.3%</b>	<b>66.6%</b>	<b>66.5%</b>
<b>Aug-12</b>	<b>66.2%</b>	<b>68.5%</b>	<b>66.3%</b>	<b>66.6%</b>
<b>Sep-12</b>	<b>66.8%</b>	<b>69.2%</b>	<b>66.5%</b>	<b>66.8%</b>

# Total Employed Residents (Jan08=100)

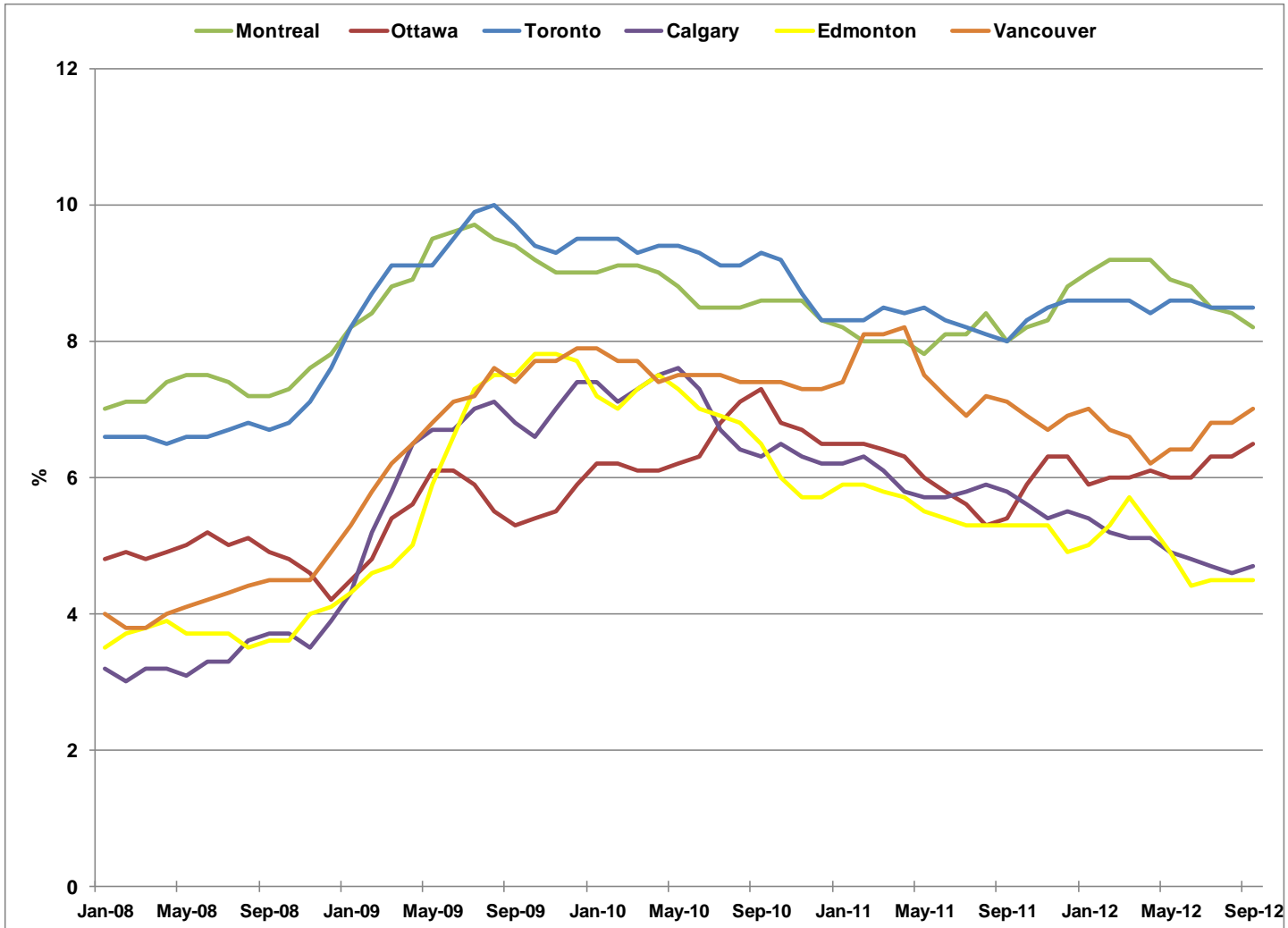


# Total Employed Residents

	City	"905"	Ontario	Canada
Sep-11	1,266	1,707	6,754	17,391
Oct-11	1,256	1,688	6,719	17,339
Nov-11	1,265	1,686	6,736	17,333
Dec-11	1,266	1,678	6,754	17,355
Jan-12	1,256	1,682	6,746	17,357
Feb-12	1,266	1,671	6,742	17,354
Mar-12	1,284	1,674	6,788	17,437
Apr-12	1,264	1,696	6,781	17,495
May-12	1,275	1,693	6,762	17,502
Jun-12	1,286	1,716	6,782	17,510
Jul-12	1,292	1,720	6,793	17,479
Aug-12	1,292	1,724	6,768	17,514
Sep-12	1,303	1,755	6,799	17,566

# Unemployment Rate

## Major Canadian Urban Regions



# Unemployment Rate

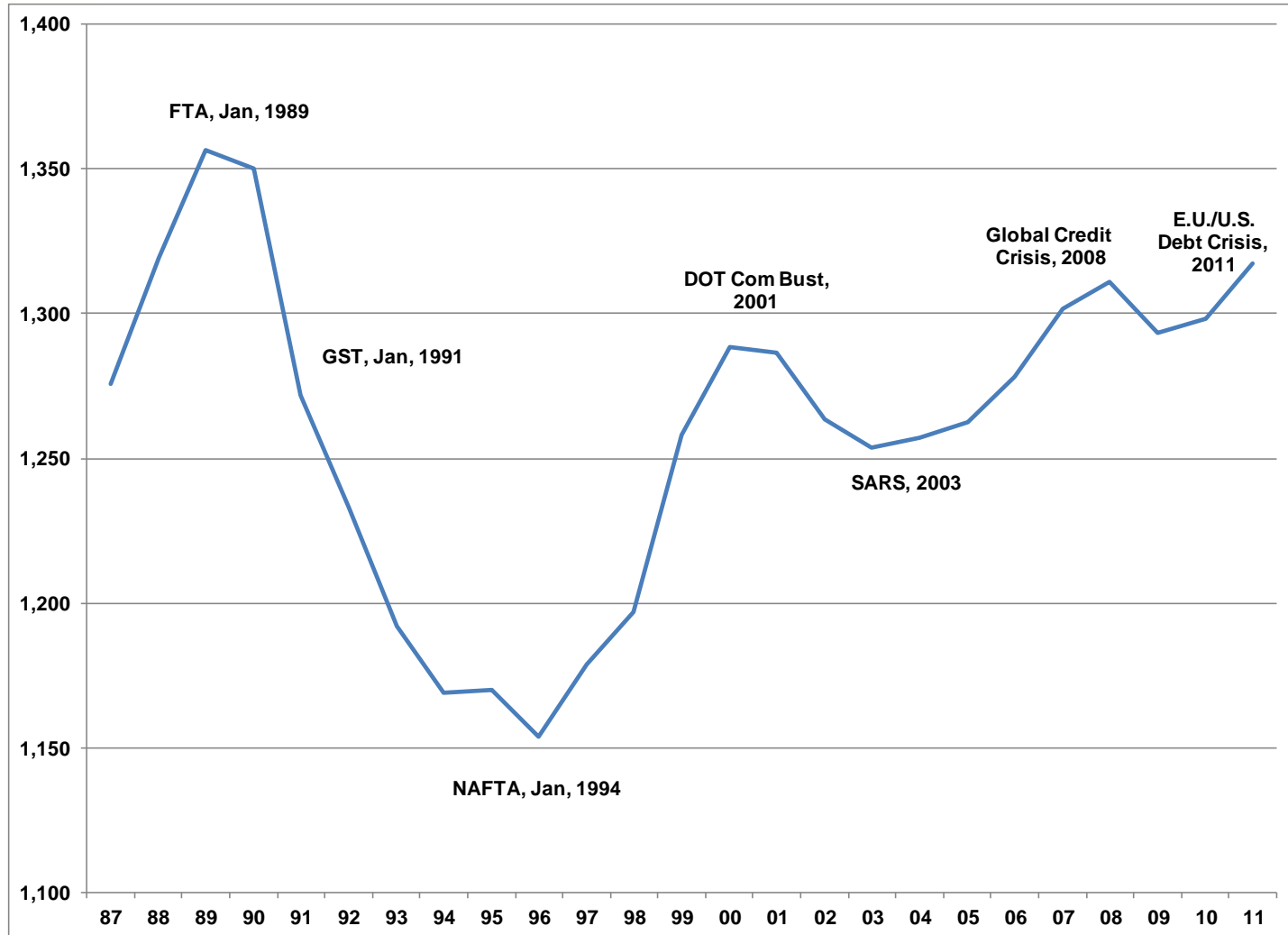
## Major Canadian Economic Regions

	Montreal	Ottawa	Toronto	Calgary	Edmonton	Vancouver
Jan-10	9.0	6.2	9.5	7.4	7.2	7.9
Feb-10	9.1	6.2	9.5	7.1	7.0	7.7
Mar-10	9.1	6.1	9.3	7.3	7.3	7.7
Apr-10	9.0	6.1	9.4	7.5	7.5	7.4
May-10	8.8	6.2	9.4	7.6	7.3	7.5
Jun-10	8.5	6.3	9.3	7.3	7.0	7.5
Jul-10	8.5	6.8	9.1	6.7	6.9	7.5
Aug-10	8.5	7.1	9.1	6.4	6.8	7.4
Sep-10	8.6	7.3	9.3	6.3	6.5	7.4
Oct-10	8.6	6.8	9.2	6.5	6.0	7.4
Nov-10	8.6	6.7	8.7	6.3	5.7	7.3
Dec-10	8.3	6.5	8.3	6.2	5.7	7.3
Jan-11	8.2	6.5	8.3	6.2	5.9	7.4
Feb-11	8.0	6.5	8.3	6.3	5.9	8.1
Mar-11	8.0	6.4	8.5	6.1	5.8	8.1
Apr-11	8.0	6.3	8.4	5.8	5.7	8.2
May-11	7.8	6.0	8.5	5.7	5.5	7.5
Jun-11	8.1	5.8	8.3	5.7	5.4	7.2
Jul-11	8.1	5.6	8.2	5.8	5.3	6.9
Aug-11	8.4	5.3	8.1	5.9	5.3	7.2
Sep-11	8.0	5.4	8.0	5.8	5.3	7.1
Oct-11	8.2	5.9	8.3	5.6	5.3	6.9
Nov-11	8.3	6.3	8.5	5.4	5.3	6.7
Dec-11	8.8	6.3	8.6	5.5	4.9	6.9
Jan-12	9.0	5.9	8.6	5.4	5.0	7.0
Feb-12	9.2	6.0	8.6	5.2	5.3	6.7
Mar-12	9.2	6.0	8.6	5.1	5.7	6.6
Apr-12	9.2	6.1	8.4	5.1	5.3	6.2
May-12	8.9	6.0	8.6	4.9	4.9	6.4
Jun-12	8.8	6.0	8.6	4.8	4.4	6.4
Jul-12	8.5	6.3	8.5	4.7	4.5	6.8
Aug-12	8.4	6.3	8.5	4.6	4.5	6.8
Sep-12	8.2	6.5	8.5	4.7	4.5	7.0



# Employment in Establishments

City of Toronto



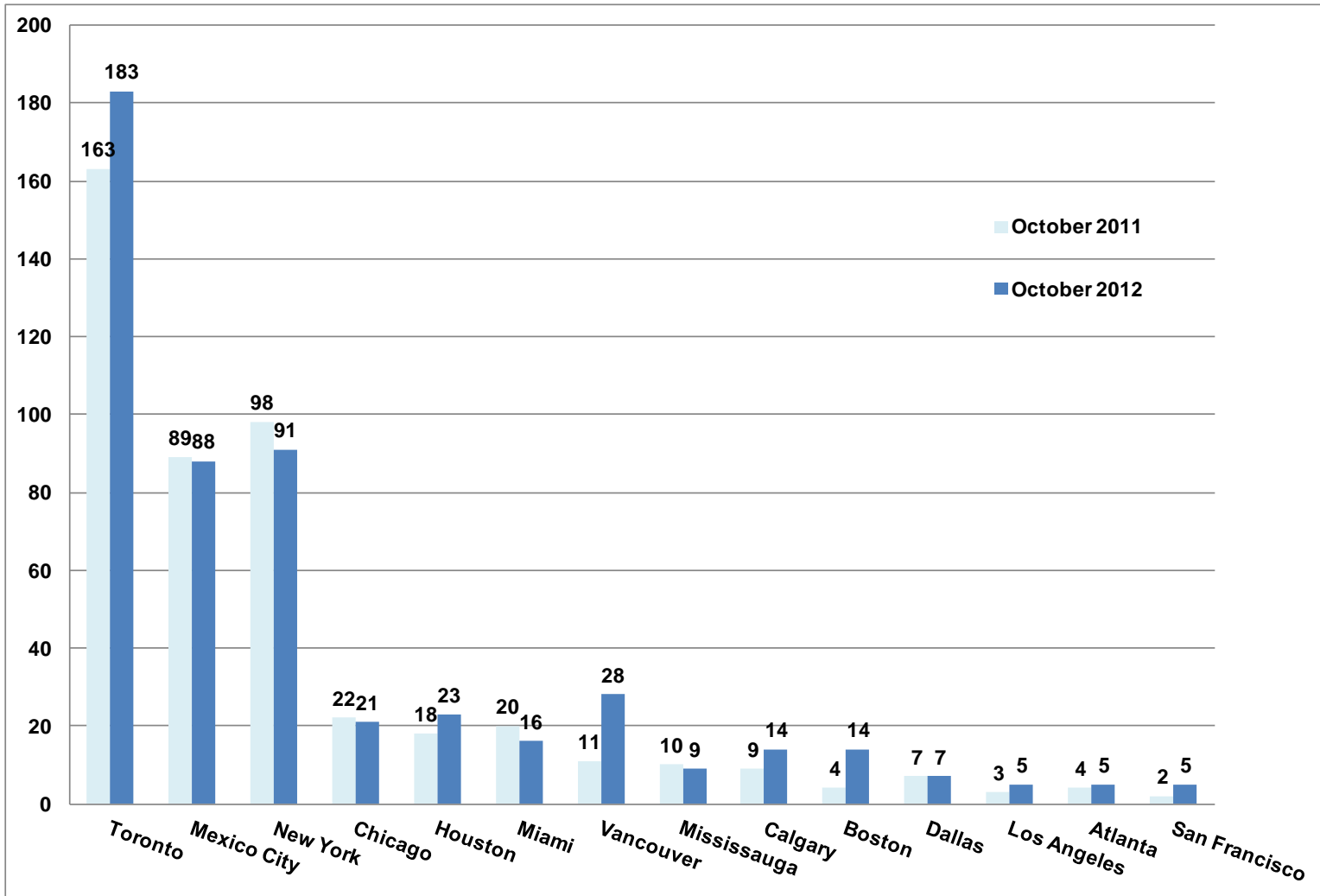
# Employment in Establishments

City of Toronto

Change 2010-2011	Estab	Part-time	Full-time	Total
Office	690	1,850	2,747	4,597
Manuf & Whse	107	376	-1,336	-960
Institutional	89	3,400	2,932	6,332
Retail	16	1,156	-124	1,032
Service	422	1,767	2,883	4,650
Other	188	887	2,491	3,378
<b>All-Sector Total</b>	<b>1,512</b>	<b>9,436</b>	<b>9,593</b>	<b>19,029</b>

# High Rise Buildings Under Construction

## North American Cities



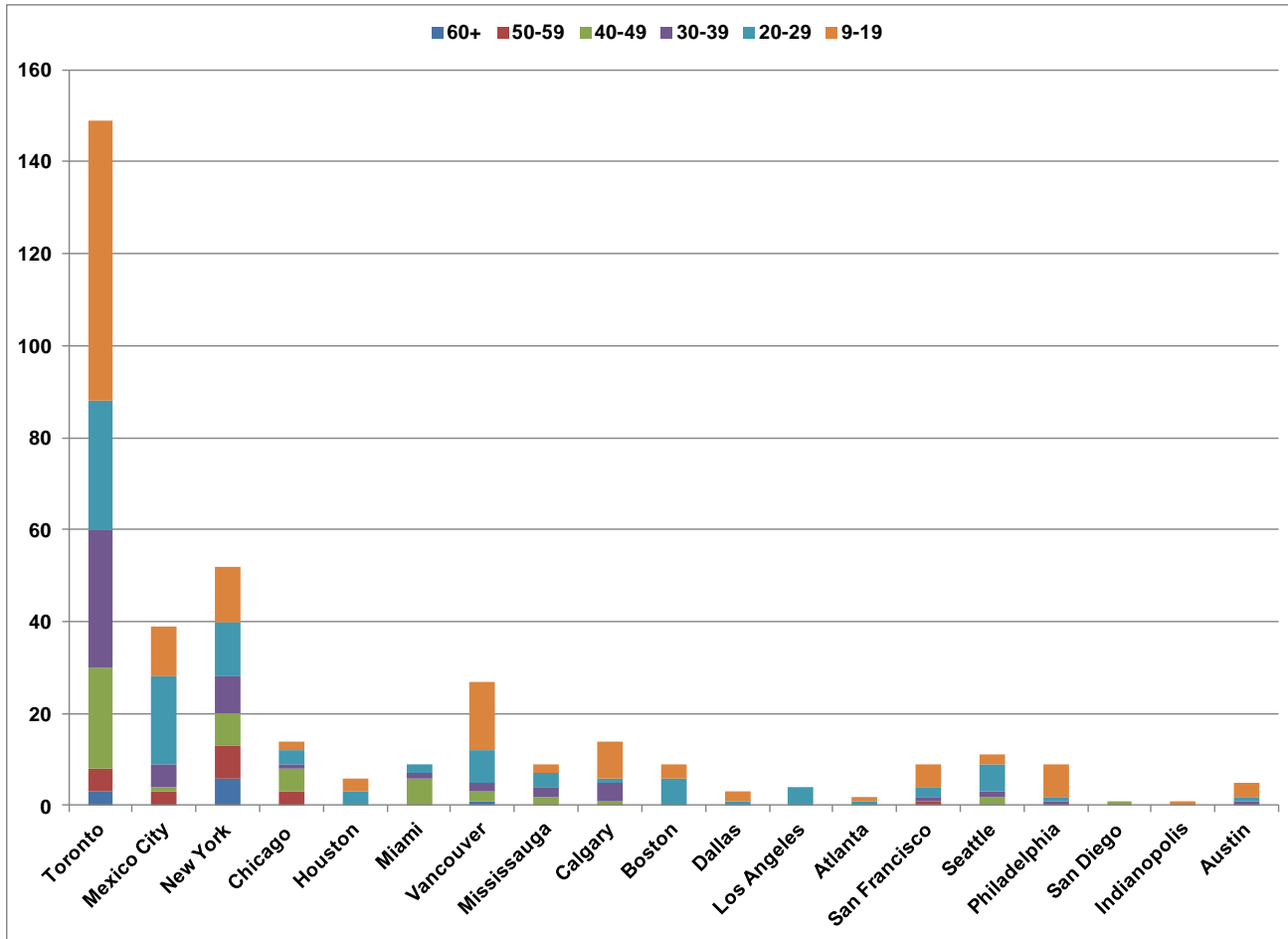
# Tallest Buildings

## City of Toronto

		Metres	Feet	Floors	Year
1. Aura at College Park Toronto	388 Yonge St	272	892	78	2014
2. Number One Bloor Toronto	1 Bloor St E	238	780	70	2015
3. Ice Condos at York Centre 2 Toronto	16 York St	234	768	67	2015
4. L Tower Toronto	1 Front St E	205	672	57	2013
5. Ice Condos at York Centre 1 Toronto	16 York St	204	669	57	2013
6. U Condominiums II Toronto	St Mary St	184	604	55	2014
7. Karma Toronto	9 Grenville Street	170	558	52	
8. Hullmark Centre I Toronto	4759 Yonge St	168	551	45	2014
9. X2 Toronto	580 Jarvis St	160	525	44	2014
10. Southcore Financial Centre Delta Hotel Toronto	Lower Simcoe Street	160	524	47	2014
11. Theatre Park Toronto	224 King West	157	515	47	2014
12. Three Hundred Toronto	300 Front St W	156	512	52	2013
13. U Condominiums I Toronto	St Mary St	154	505	45	2014
14. Westlake Village 1 Toronto	Parklawn and Lake Shore	153	503	48	2014
15. FIVE Toronto	5 St. Joseph St	147	482	45	2014
16. Residences at RCMI Toronto	426 University Ave	146	478	42	2013
17. Cinema Tower Condominiums Toronto	21 W idmer St	143	468	43	2013
18. Emerald Park East Toronto	580 Jarvis St	142	464	39	2015
19. Couture Toronto	28 Ted Rogers W ay	141	462	42	2013
20. Gibson Square North Toronto	5170 Yonge St	138	451	42	2013
20. Gibson Square South Toronto	5170 Yonge St	138	451	42	2013
22. Hullmark Centre II Toronto	4759 Yonge St	128	420	37	2014
23. Emerald Park West Toronto	4726 Yonge St	112	369	30	2015
24. Westlake Village 2 Toronto	Parklawn and Lake Shore			44	2014
24. Westlake Village 3 Toronto	Parklawn and Lake Shore			37	2014

# High Rise Buildings Under Construction

## North American Cities Comparison



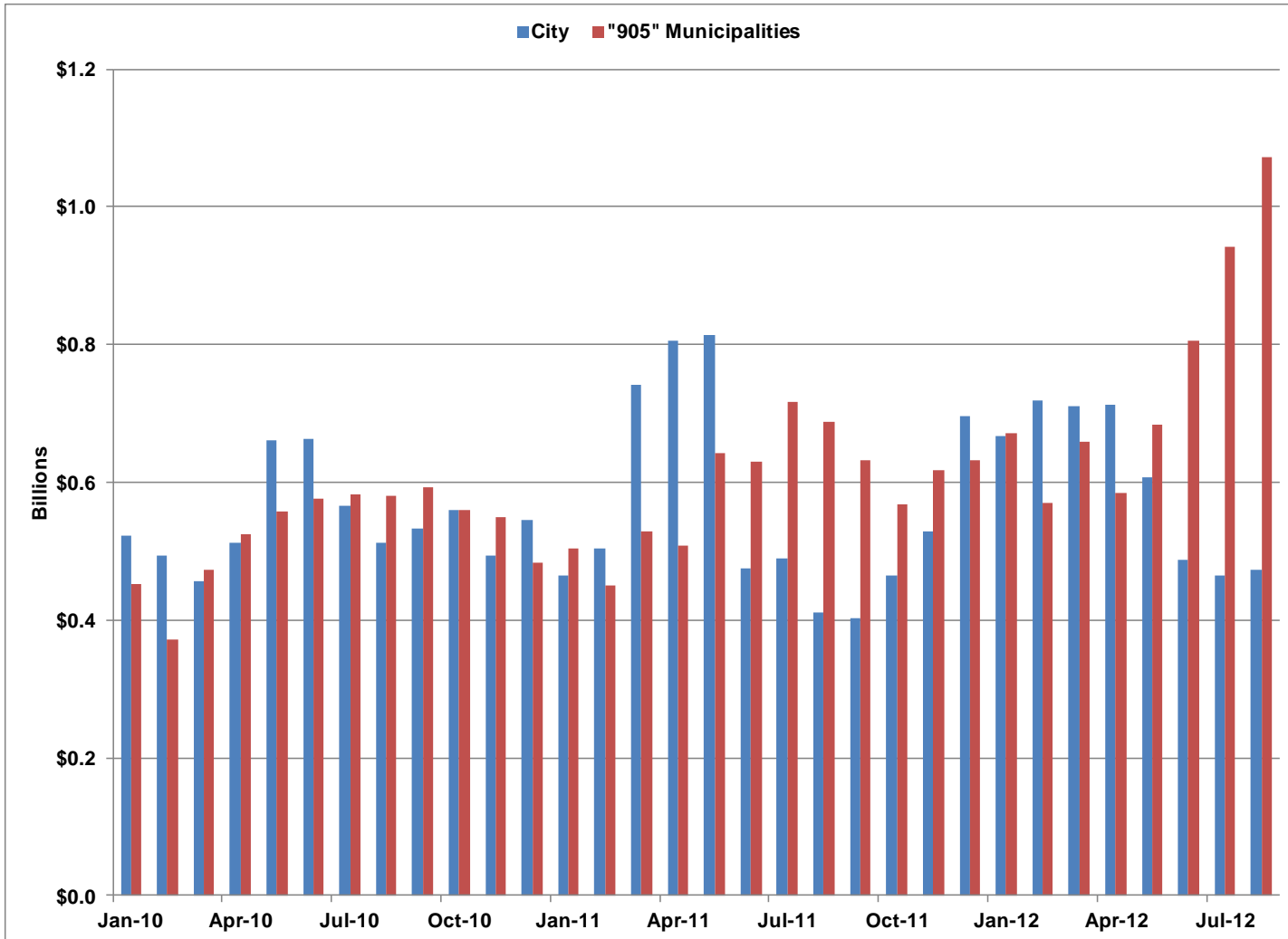
# High Rise Buildings Under Construction

## City of Toronto by number of floors

Floors	Number of Buildings	Total Floors	Percent of Total
70+	2	153	23
60-69	1	67	10
50-59	5	271	40
40-49	22	964	143
30-39	30	1,009	150
20-29	28	673	100
9-19	61	809	120
<b>Total</b>	<b>149</b>	<b>3,946</b>	

# Total Value of Building Permits

## City and "905" Area



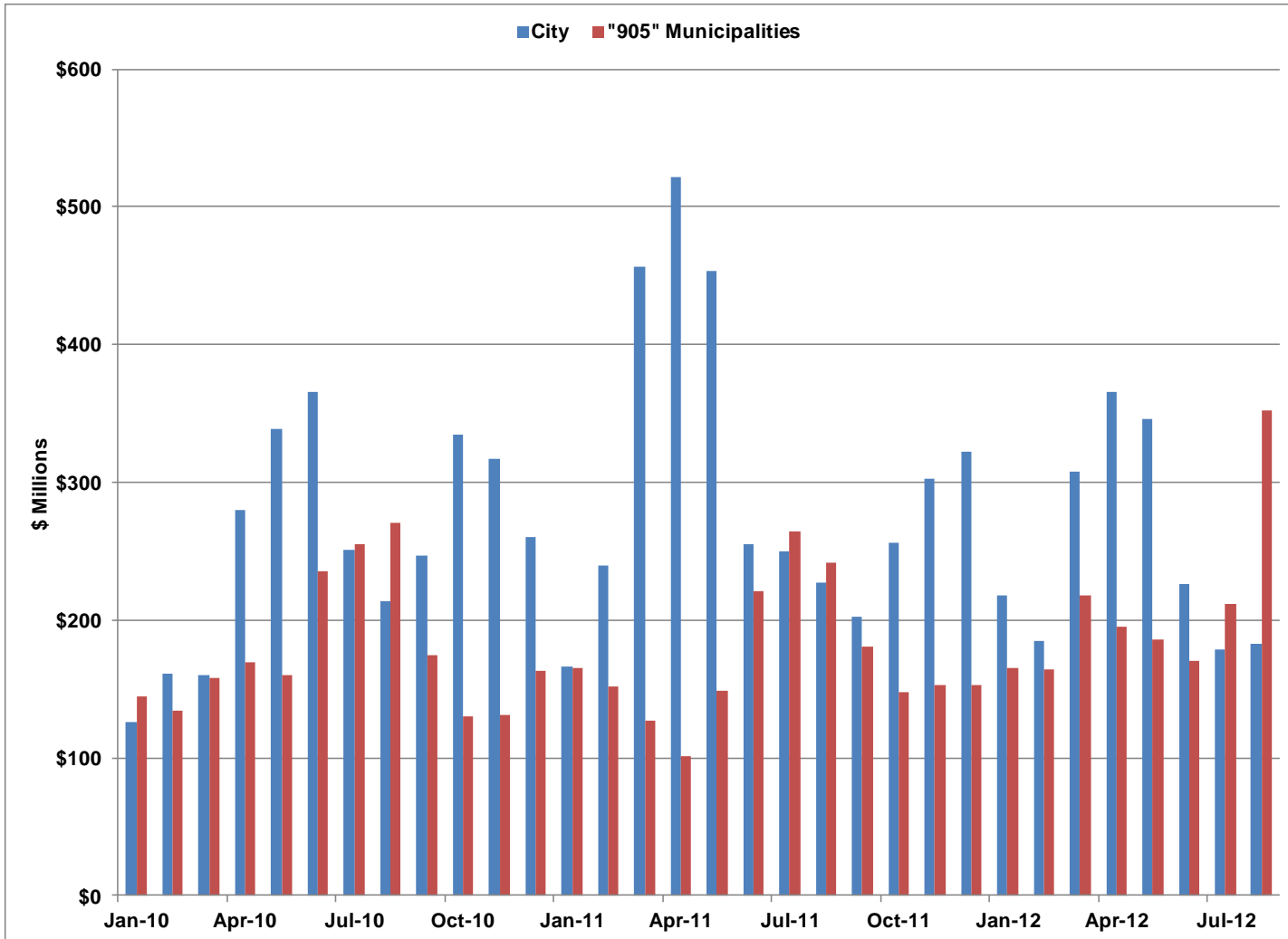
# Total Value of Building Permits

## City and "905" Area

	Billions \$	
	City	"905" Municipalities
Aug-11	\$0.41	\$0.69
Sep-11	\$0.40	\$0.63
Oct-11	\$0.46	\$0.57
Nov-11	\$0.53	\$0.62
Dec-11	\$0.70	\$0.63
Jan-12	\$0.67	\$0.67
Feb-12	\$0.72	\$0.57
Mar-12	\$0.71	\$0.66
Apr-12	\$0.71	\$0.58
May-12	\$0.61	\$0.68
Jun-12	\$0.49	\$0.81
Jul-12	\$0.47	\$0.94
Aug-12	\$0.47	\$1.07



# Value of ICI Building Permits City and "905" Area



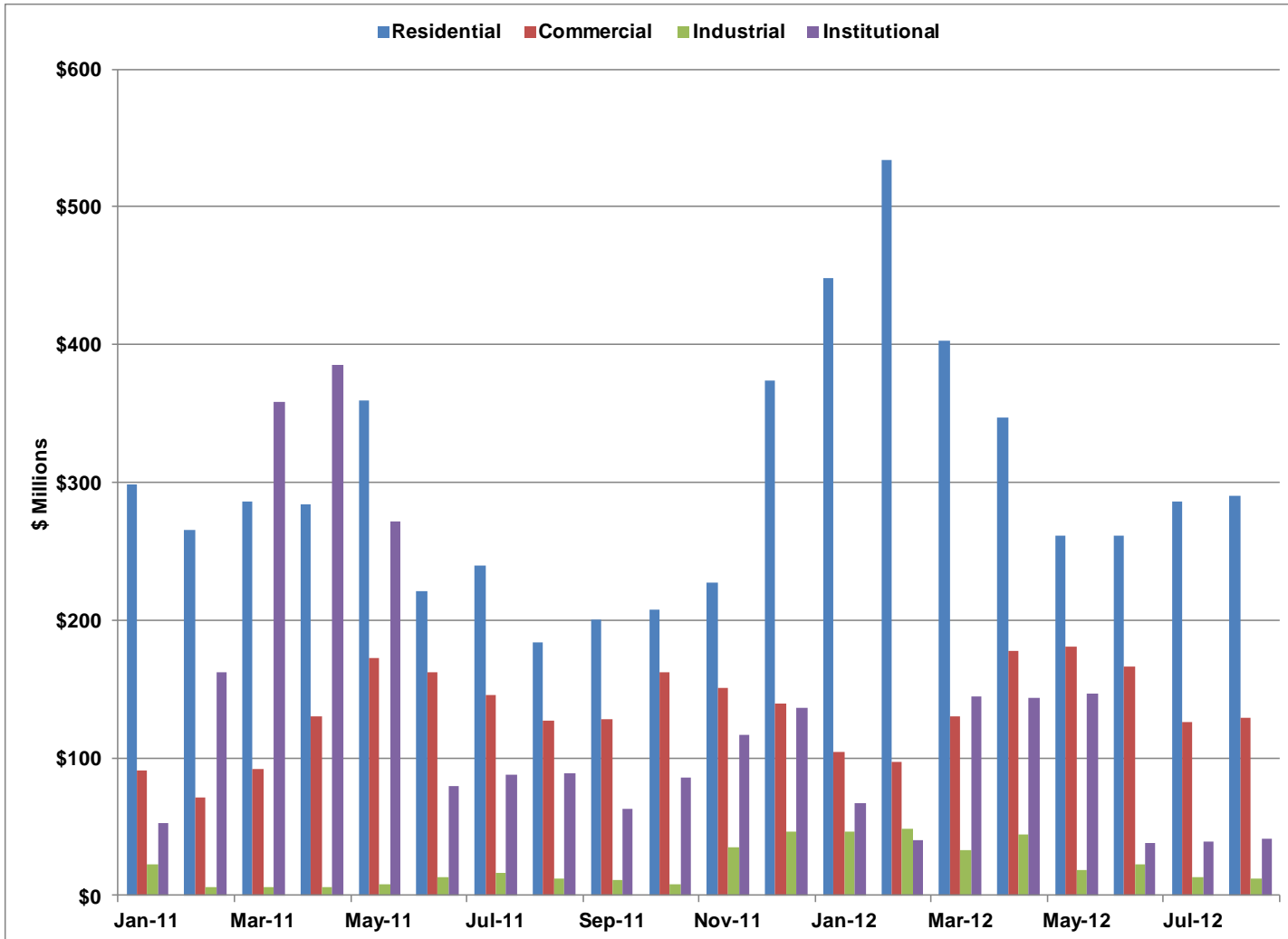
# Value of ICI Building Permits

## City and "905" Area

Millions \$

	City	"905" Municipalities
Aug-11	\$227.7	\$241.9
Sep-11	\$202.3	\$180.4
Oct-11	\$256.6	\$148.0
Nov-11	\$302.2	\$152.9
Dec-11	\$321.8	\$153.3
Jan-12	\$217.7	\$165.1
Feb-12	\$185.4	\$164.3
Mar-12	\$308.1	\$218.0
Apr-12	\$366.0	\$195.0
May-12	\$345.9	\$186.0
Jun-12	\$226.3	\$170.8
Jul-12	\$178.8	\$212.0
Aug-12	\$183.0	\$351.9

# Value of Building Permits City of Toronto



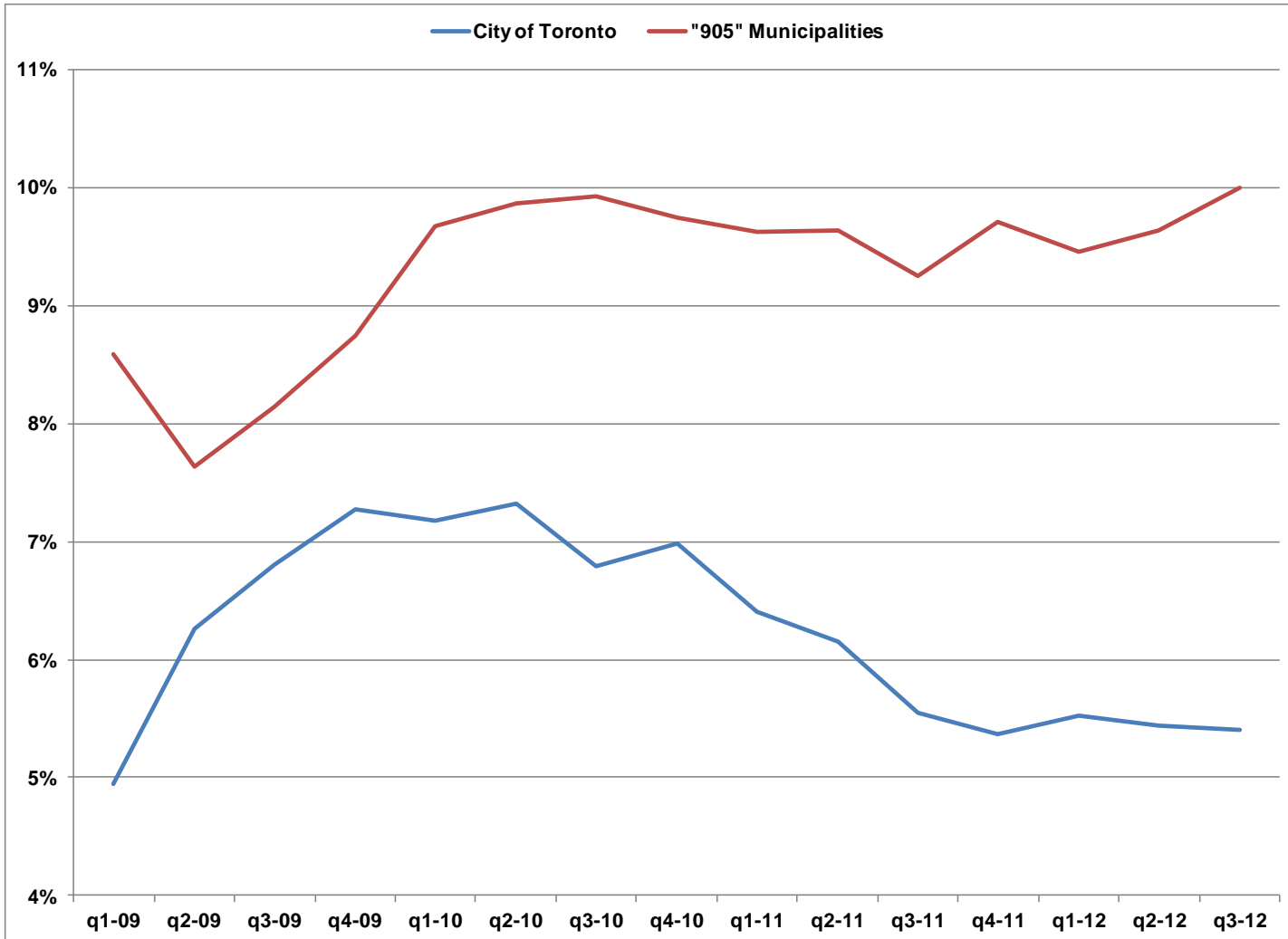
# Value of Building Permits

## City of Toronto

Millions \$

	Residential	Commercial	Industrial	Institutional
Aug-11	184.2	127.0	12.1	88.6
Sep-11	199.9	128.5	10.9	62.9
Oct-11	207.2	162.7	8.7	85.3
Nov-11	227.1	150.4	34.6	117.1
Dec-11	373.8	138.9	46.9	136.0
Jan-12	448.7	104.1	46.7	66.9
Feb-12	534.0	96.8	48.7	39.8
Mar-12	403.1	130.5	33.0	144.5
Apr-12	347.4	178.1	44.0	143.8
May-12	261.5	180.3	18.7	146.8
Jun-12	261.0	166.0	22.2	38.1
Jul-12	286.6	126.1	13.3	39.3
Aug-12	290.6	128.9	12.9	41.3

# Office Vacancy Rate Toronto Region

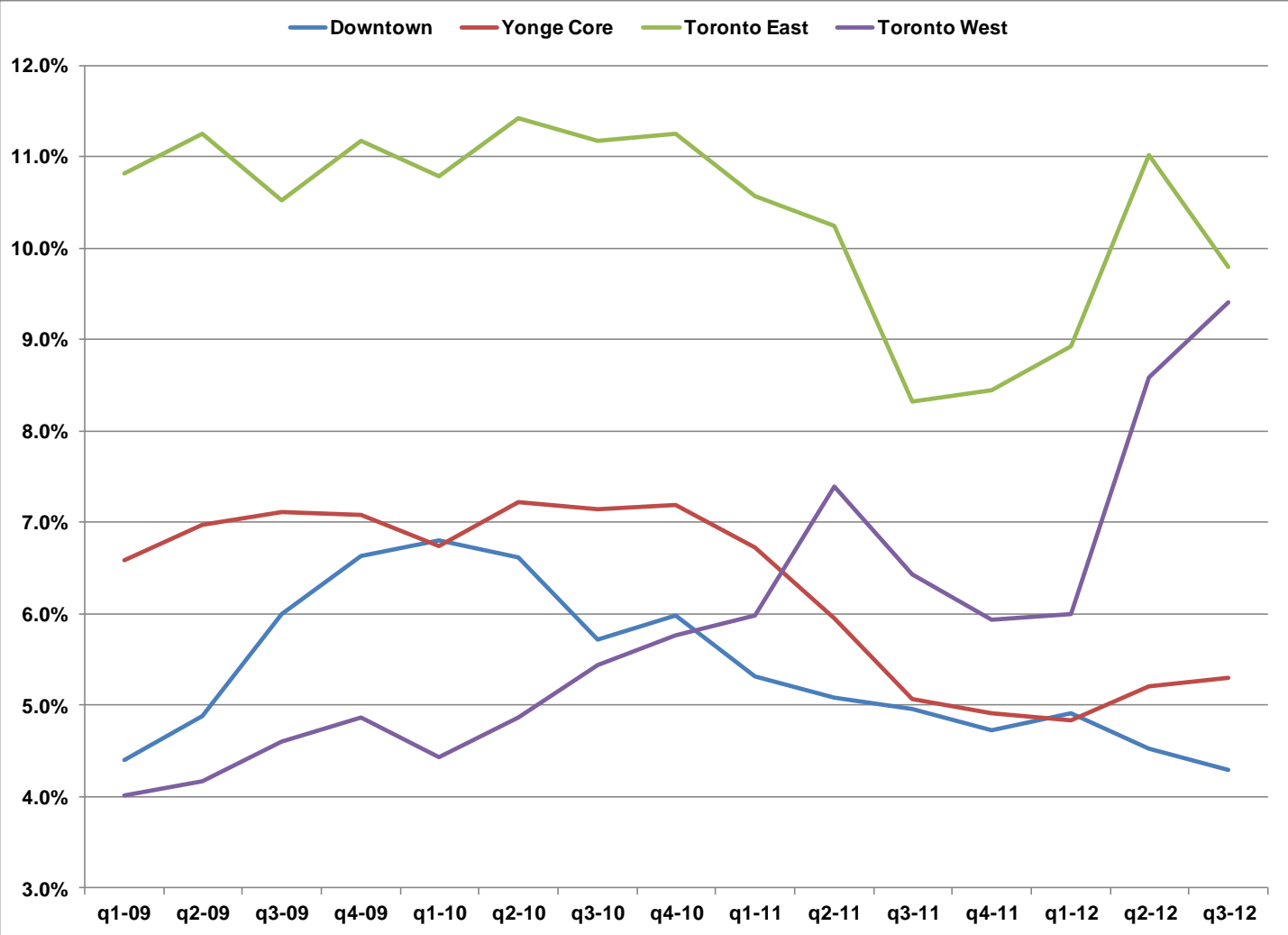


# Office Vacancy Rate

## Toronto Region

	City of Toronto	"905" Municipalities	Toronto Region
q1-09	4.9%	8.6%	6.0%
q2-09	6.3%	7.6%	6.7%
q3-09	6.8%	8.1%	7.2%
q4-09	7.3%	8.7%	7.7%
q1-10	7.2%	9.7%	7.9%
q2-10	7.3%	9.9%	8.1%
q3-10	6.8%	9.9%	7.7%
q4-10	7.0%	9.7%	7.8%
q1-11	6.4%	9.6%	7.4%
q2-11	6.2%	9.6%	7.2%
q3-11	5.6%	9.2%	6.7%
q4-11	5.4%	9.7%	6.7%
q1-12	5.5%	9.4%	6.7%
q2-12	5.4%	9.6%	6.7%
q3-12	5.4%	10.0%	6.8%

# Office Vacancy Rates for Selected Areas

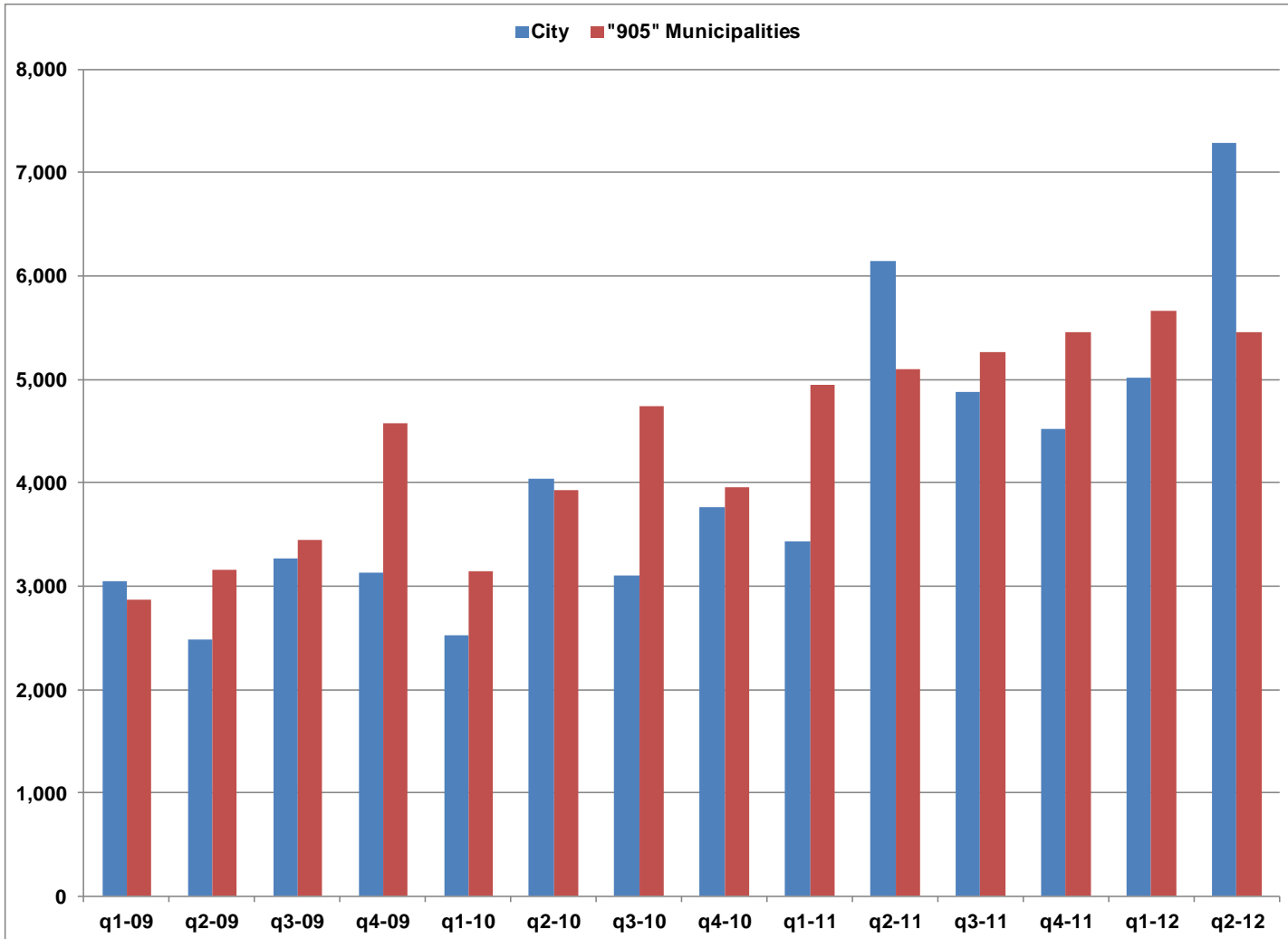


# Office Vacancy Rates for Selected Areas

	Downtown	Yonge Core	Toronto East	Toronto West
q1-09	4.4%	6.6%	10.8%	4.0%
q2-09	4.9%	7.0%	11.2%	4.2%
q3-09	6.0%	7.1%	10.5%	4.6%
q4-09	6.6%	7.1%	11.2%	4.9%
q1-10	6.8%	6.7%	10.8%	4.4%
q2-10	6.6%	7.2%	11.4%	4.9%
q3-10	5.7%	7.1%	11.2%	5.4%
q4-10	6.0%	7.2%	11.3%	5.8%
q1-11	5.3%	6.7%	10.6%	6.0%
q2-11	5.1%	5.9%	10.2%	7.4%
q3-11	5.0%	5.1%	8.3%	6.4%
q4-11	4.7%	4.9%	8.4%	5.9%
q1-12	4.9%	4.8%	8.9%	6.0%
q2-12	4.5%	5.2%	11.0%	8.6%
q3-12	4.3%	5.3%	9.8%	9.4%



# Housing Starts Toronto Region



# Housing Starts

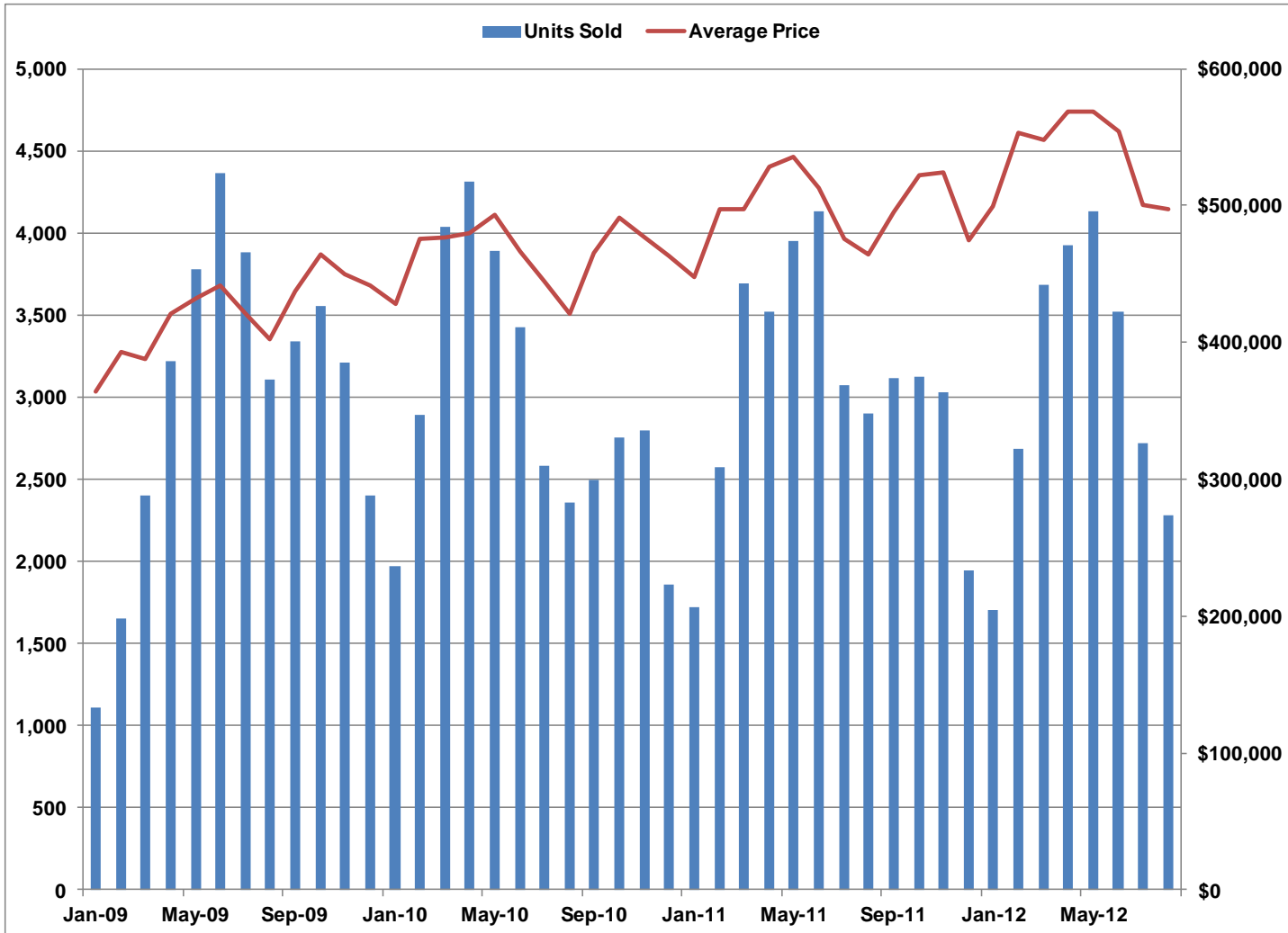
## Toronto Region

### Number of Units

	City	"905" Municipalities
q1-09	3,042	2,862
q2-09	2,483	3,156
q3-09	3,271	3,441
q4-09	3,123	4,571
q1-10	2,523	3,146
q2-10	4,040	3,922
q3-10	3,104	4,741
q4-10	3,758	3,961
q1-11	3,433	4,944
q2-11	6,142	5,100
q3-11	4,878	5,269
q4-11	4,519	5,460
q1-12	5,021	5,661
q2-12	7,285	5,451
July-11	2,236	2,001
Aug-11	1,390	1,777
July-12	2,018	2,386
Aug-12	3,502	1,946

# MLS Sales and Prices

## City of Toronto

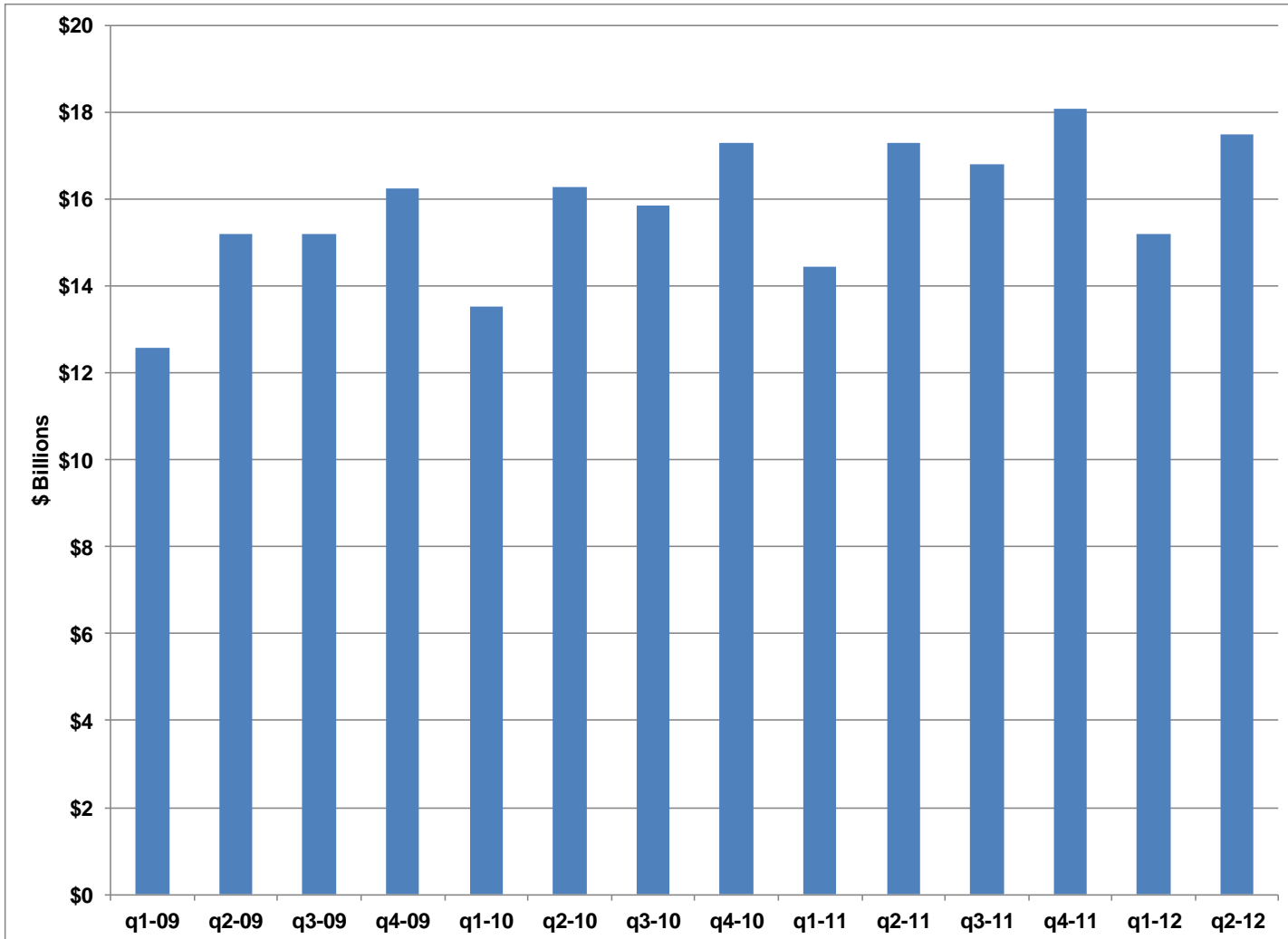


# MLS Sales and Prices

## City of Toronto

	Units Sold	Average Price
Jan-10	1,973	\$428,151
Feb-10	2,891	\$475,579
Mar-10	4,037	\$477,263
Apr-10	4,310	\$479,340
May-10	3,887	\$493,265
Jun-10	3,428	\$466,220
Jul-10	2,582	\$444,459
Aug-10	2,360	\$421,407
Sep-10	2,499	\$465,890
Oct-10	2,751	\$491,157
Nov-10	2,794	\$476,844
Dec-10	1,856	\$463,416
Jan-11	1,718	\$447,644
Feb-11	2,577	\$497,481
Mar-11	3,690	\$497,276
Apr-11	3,519	\$528,472
May-11	3,950	\$535,807
Jun-11	4,133	\$512,879
Jul-11	3,072	\$475,717
Aug-11	2,898	\$464,863
Sep-11	3,114	\$495,686
Oct-11	3,124	\$522,606
Nov-11	3,028	\$524,686
Dec-11	1,948	\$474,270
Jan-12	1,705	\$499,045
Feb-12	2,686	\$553,519
Mar-12	3,682	\$548,354
Apr-12	3,925	\$568,436
May-12	4,130	\$568,768
Jun-12	3,520	\$554,077
Jul-12	2,721	\$500,934
Aug-12	2,282	\$497,769

# Retail Sales Toronto Region



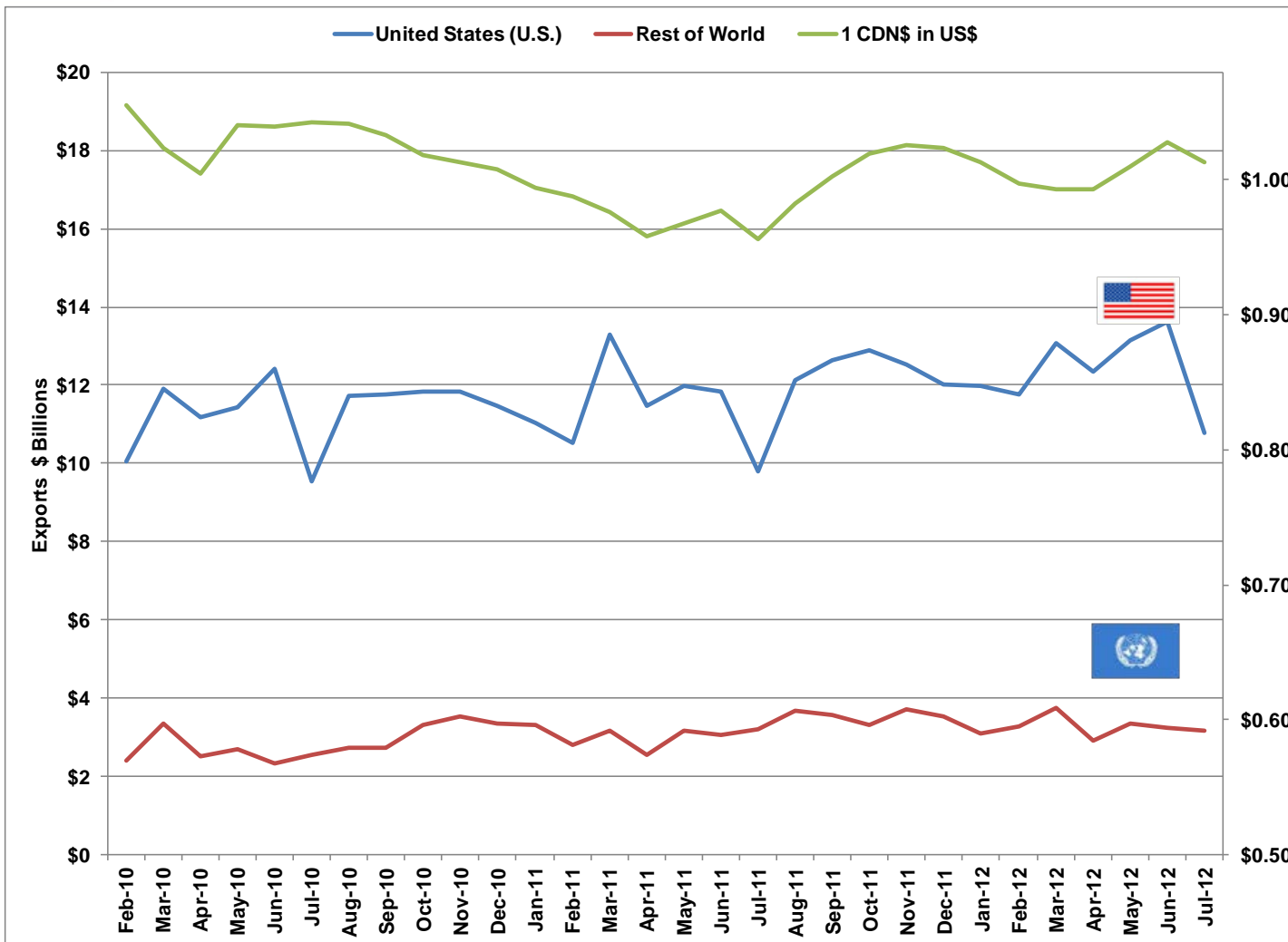
# Retail Sales

## Toronto Region

### Regional Retail Sales

Quarter	(\$ Billions)
q1-09	12.6
q2-09	15.2
q3-09	15.2
q4-09	16.2
q1-10	13.5
q2-10	16.3
q3-10	15.9
q4-10	17.3
q1-11	14.4
q2-11	17.3
q3-11	16.8
q4-11	18.1
q1-12	15.2
q2-12	17.5
July 2011	5.798
August 2011	5.718
July 2012	5.841
August 2012	5.696

# Ontario Merchandise Exports & US\$ Exchange Rate



# Ontario Merchandise Exports & US\$ Exchange Rate

## Ontario's Merchandise Exports (\$billions)

	US	All Others	1 CDN\$ in US\$
Feb-10	10.07	2.42	12.482
Mar-10	11.89	3.35	15.243
Apr-10	11.18	2.51	13.695
May-10	11.42	2.69	14.116
Jun-10	12.41	2.34	14.748
Jul-10	9.56	2.56	12.114
Aug-10	11.73	2.74	14.469
Sep-10	11.77	2.74	14.512
Oct-10	11.82	3.31	15.130
Nov-10	11.84	3.53	15.363
Dec-10	11.46	3.37	14.826
Jan-11	11.02	3.32	14.334
Feb-11	10.54	2.82	13.355
Mar-11	13.29	3.19	16.477
Apr-11	11.47	2.55	14.014
May-11	11.99	3.15	15.149
Jun-11	11.82	3.07	14.888
Jul-11	9.80	3.20	12.996
Aug-11	12.13	3.67	15.799
Sep-11	12.64	3.57	16.209
Oct-11	12.90	3.30	16.200
Nov-11	12.53	3.71	16.235
Dec-11	12.01	3.55	15.556
Jan-12	11.96	3.10	15.065
Feb-12	11.75	3.29	15.038
Mar-12	13.06	3.75	16.811
Apr-12	12.35	2.93	15.282
May-12	13.13	3.35	16.480
Jun-12	13.62	3.26	16.871
Jul-12	10.78	3.18	13.964



