

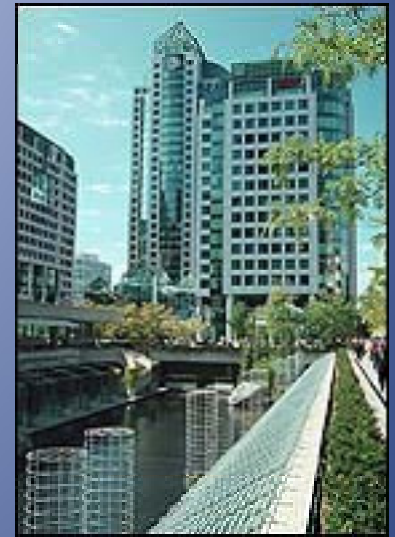
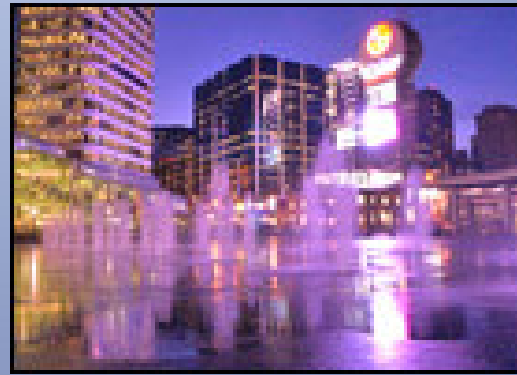
Toronto's Coordinated Street  
Furniture Program: Status Update  
and Proposed InfoPillar Placement  
Guidelines

PWIC – April 3, 2012

# Toronto's Street Furniture Program

- 25,600 elements
- 8 different elements/services
- City-wide
- \$1 Billion value to the City
- World-wide interest







# Toronto's Coordinated Street Furniture Program

World-wide interest:

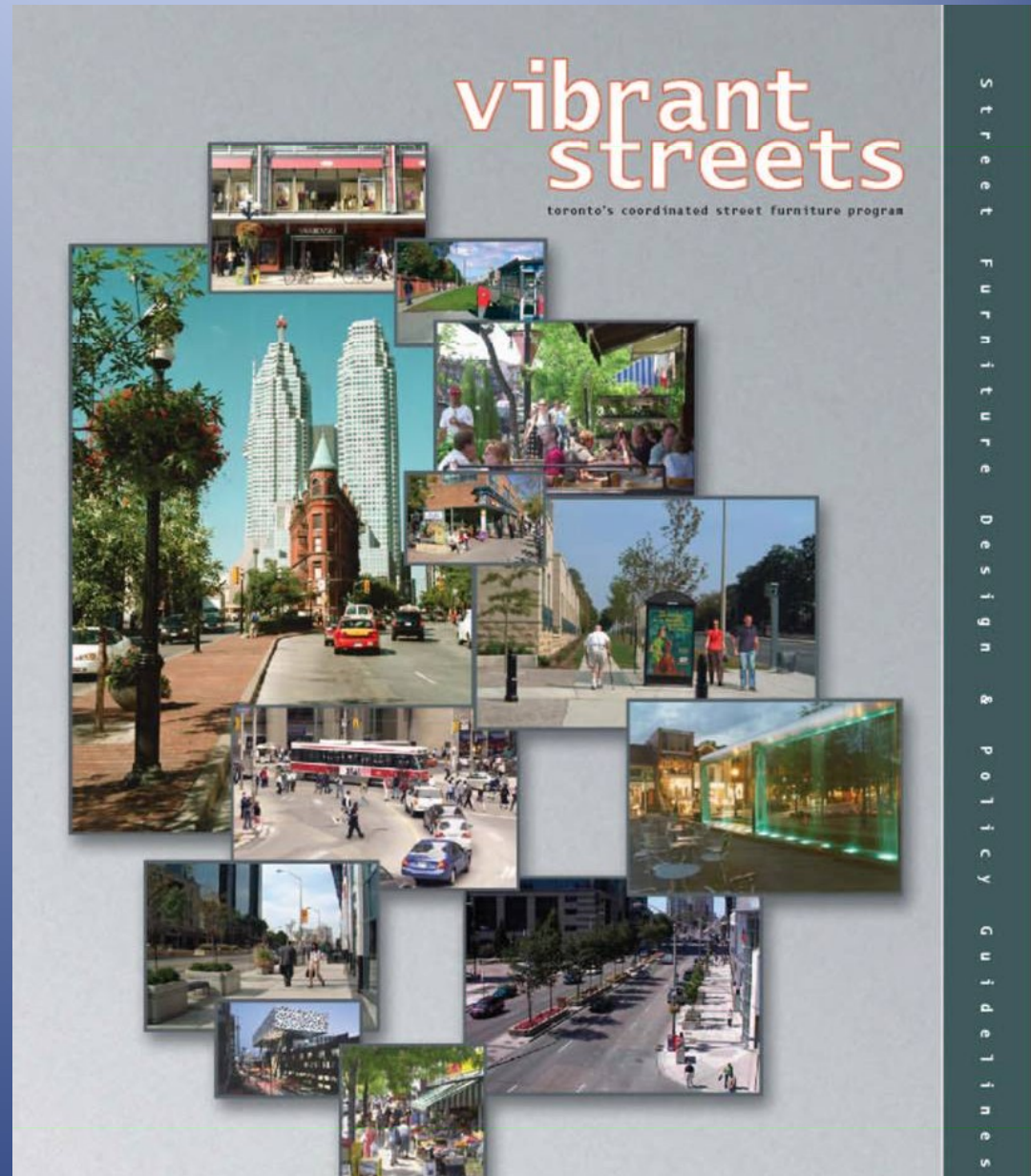
- Montreal (Quebec)
- Ottawa and York Region (Ontario)
- Boston (Massachusetts)
- Oklahoma City (Oklahoma)
- Minneapolis (Minnesota)
- Pittsburgh (Pennsylvania)
- Amman (Jordan)
- Budapest (Hungary)
- Dubai, (United Arab Emirates)
- Hamburg (Germany)
- Newcastle (Aus.)
- Warsaw (Poland)
- Westminster (UK)
- Zurich (Switzerland).



[http://www.minneapolismn.gov/publicworks/streetfurniture/street-furniture\\_street-furniture-docs](http://www.minneapolismn.gov/publicworks/streetfurniture/street-furniture_street-furniture-docs):

*“Toronto has spent considerable time and effort to create their Coordinated Street Furniture Program. Public Works recently had discussions with Toronto and believes they have an excellent model to follow. Toronto created a document titled “Vibrant Streets – Street Furniture Design and Policy Guidelines” that set the direction for their street furniture RFF.”*

# Design Functionality Placement



# Pre-2007





# Keele St. North of Annette St.

BEFORE



AFTER



# University Ave. North of Queen St.

BEFORE



AFTER





# Danforth Ave at Main St. .

BEFORE



AFTER





# Civic Benefits



Lakeshore Blvd West and 22<sup>nd</sup> St. – Before & After



University Ave Triangle – Before & After



# Civic Benefits



Nathan Philips Square



Sign By-law



Transportation  
District Services



New Wayfinding  
Strategy



Street Tree Maintenance



# Civic Benefits



Graffiti Management Plan:  
Graffiti Vandalism/StreetArt Program





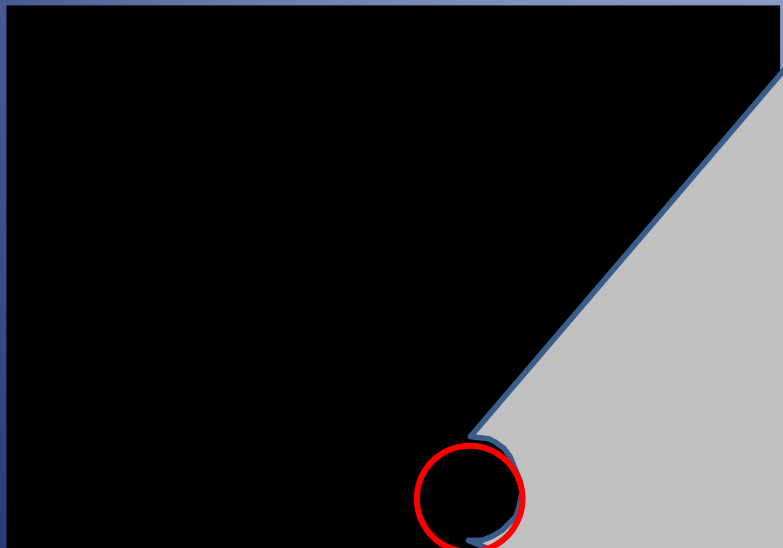
# Advertising Parameters

- Total limit – 198,200 sq. ft. (2006 levels)
- Before – 6,700 elements with advertising
  - Litter bins
  - Benches
  - Transit shelters
  - InfoPillars
- After – 4,100 elements with advertising  
=39%reduction



# Status update

- STREETView Business System:  
Quick generation of Work Order  
field reports



**TORONTO** TRANSPORTATION SERVICES  
STREET FURNITURE MANAGEMENT

**WO11-00346**  
SR11-00332

**Problem Information**

Element Washroom  
Type Damage/Repair  
Issue Rnf  
Start Date 4/28/2011  
Assigned To Lisa Marcello

Address 318 QUEENS QUAY W  
Street QUEENS QUAY W Side North  
Cross Street REES ST Dir West  
Ward 20  
District TORONTO & EAST YORK

**FIELD REPORT**  
Status: Completed

---

**Details**

Immediate attention-Rest room roof damage-Queens Quay W north side west of Rees St

Inspection revealed the rest room at the above noted location has sustained damage to one of the roof panels. The one panel on the west side of the unit has come loose from the metal strip of the unit. Also the emergency hatch on the top of the roof has come opened. A circle check of the unit was done and no other damage was apparent on the outside of the unit. Immediate attention is needed.

---

**Contact Info**

Contact	Role	Phone	Mobile	Email Address
Gardner, Duncan	Request Referred By	(416) 392-1562		dgardner@toronto.ca

---

**Work History**

Entered By	Activity	Date	Notes
lmarcel	Inspection	28-Apr-11	11:30am attended and observed roof panel of restroom loose due to high winds lifting the panel up. Also, emergency hatch was opened. Circle check to see if there was any other damage (No damage). Took photos.
lmarcel	Sent Email	28-Apr-11	Email to Andrea notifying of damage to restroom
lmarcel	Investigation	28-Apr-11	1:30pm returned to site. Freddie from the cleaning company was present and was closing the emergency hatch from the inside of the unit. I made him aware of the loose roof panel.

---

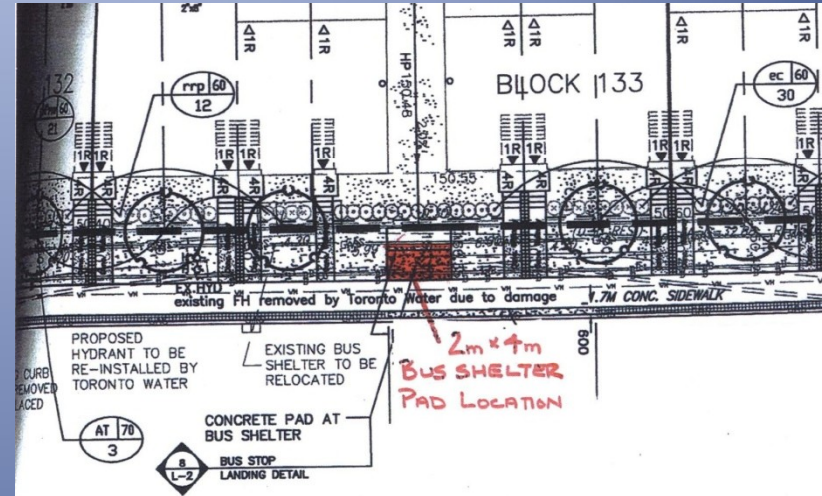
**Attachments**

- <Project Home>\attachments\Work Orders\WO11-00346\QUEENS~4.JPG
- <Project Home>\attachments\Work Orders\WO11-00346\QUEENS~3.JPG
- <Project Home>\attachments\Work Orders\WO11-00346\QUEENS~2.JPG
- <Project Home>\attachments\Work Orders\WO11-00346\QUAYSR~1.JPG
- <Project Home>\attachments\Work Orders\WO11-00346\QULSQ3~1.JPG
- <Project Home>\attachments\Work Orders\WO11-00346\QURFWY~1.JPG
- <Project Home>\attachments\Work Orders\WO11-00346\QU7NMB~1.JPG
- <Project Home>\attachments\Work Orders\WO11-00346\QUQUL2~1.JPG
- <Project Home>\attachments\Work Orders\WO11-00346\QUSSFT~1.JPG
- <Project Home>\attachments\Work Orders\WO11-00346\QUXAPY~1.JPG
- <Project Home>\attachments\Work Orders\WO11-00346\QUEENS~1.JPG
- <Project Home>\attachments\Work Orders\WO11-00346\RE Immediate attention-Rest room roof damage-Queens Quay W north side west of Rees St.rtf

# Capital Reconstruction/Coordination



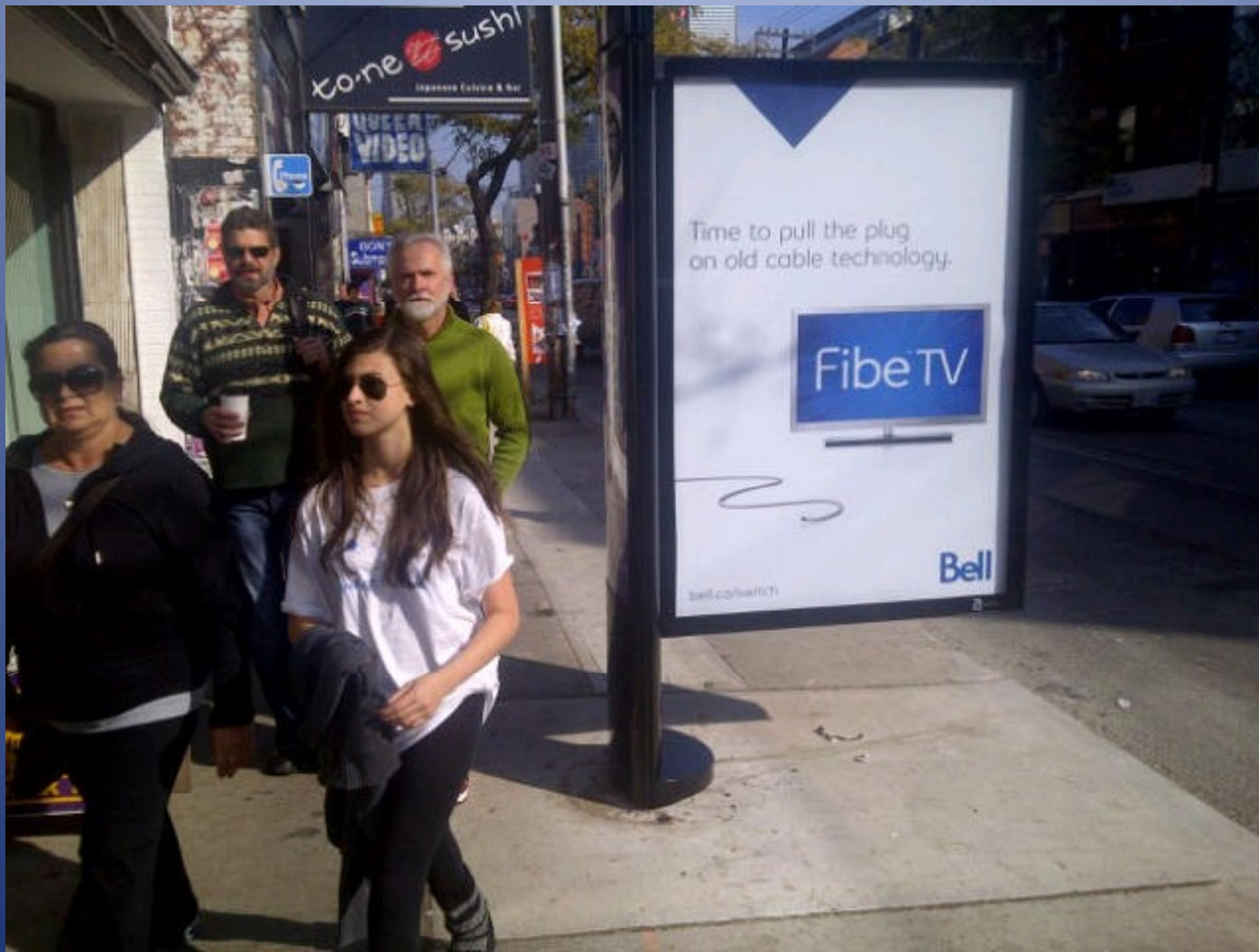
Roncesvalles Reconstruction





# Proposed InfoPillar Strategy and Placement Guidelines





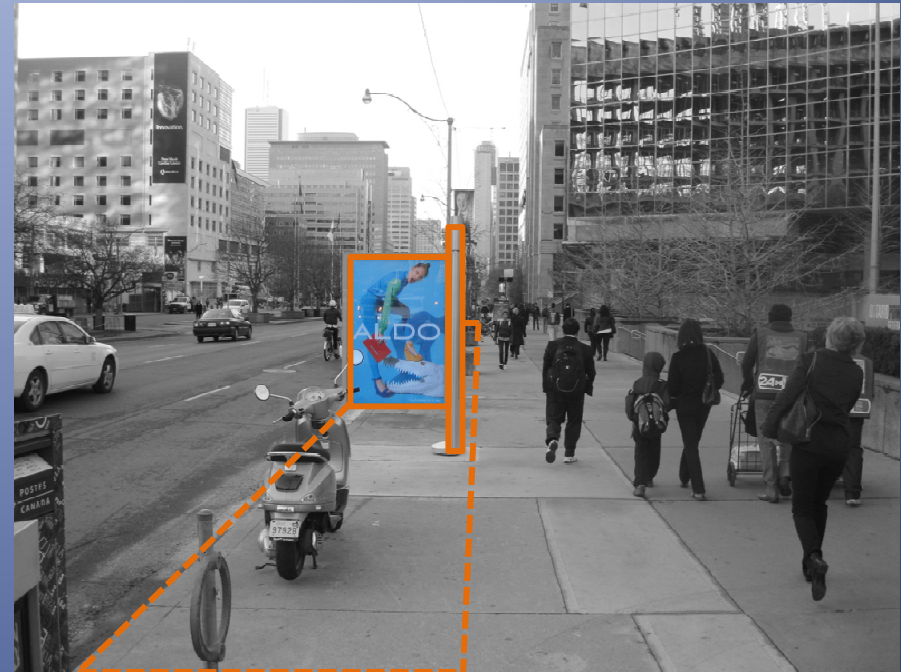
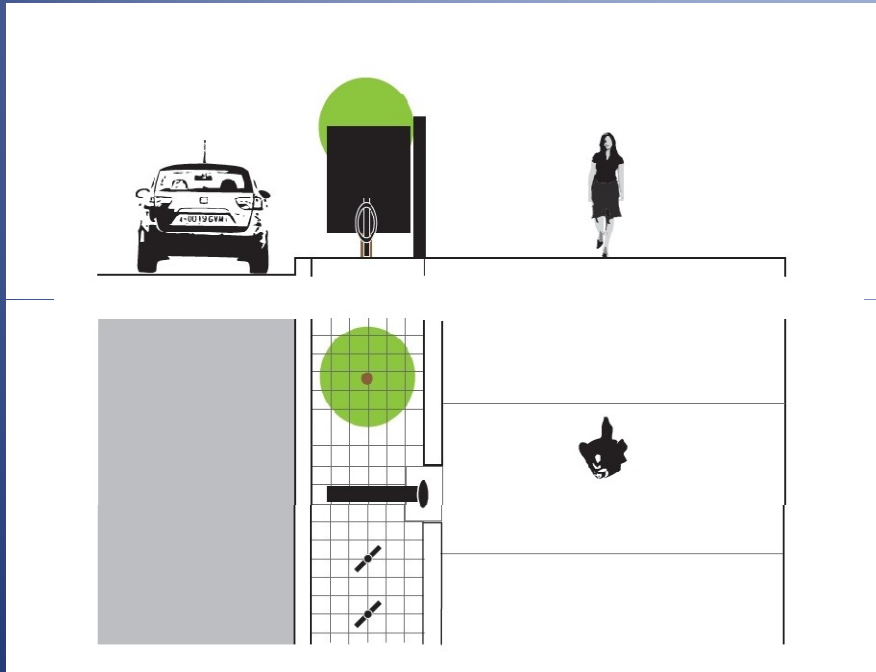


## Placement Guidelines:



- InfoPillars will be situated in locations where they provide a wayfinding function.

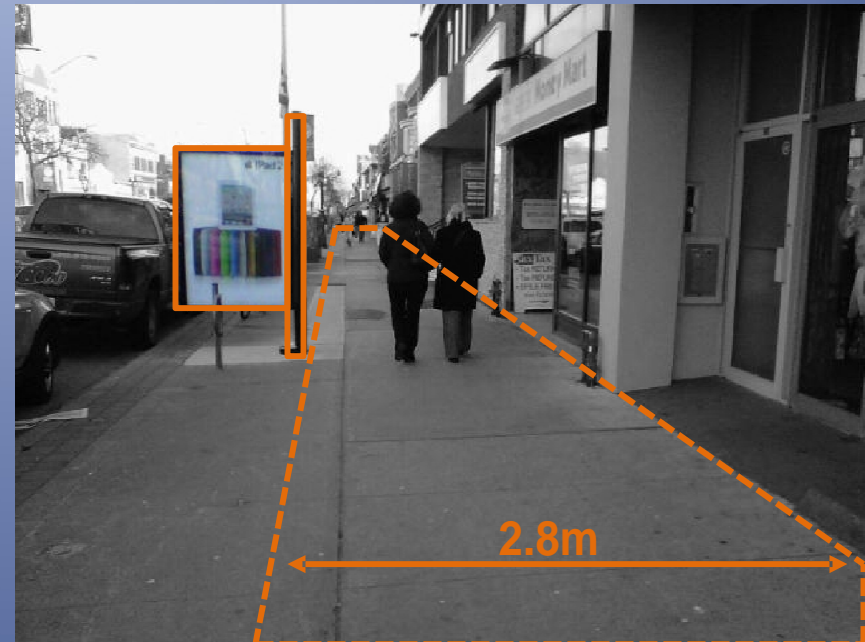
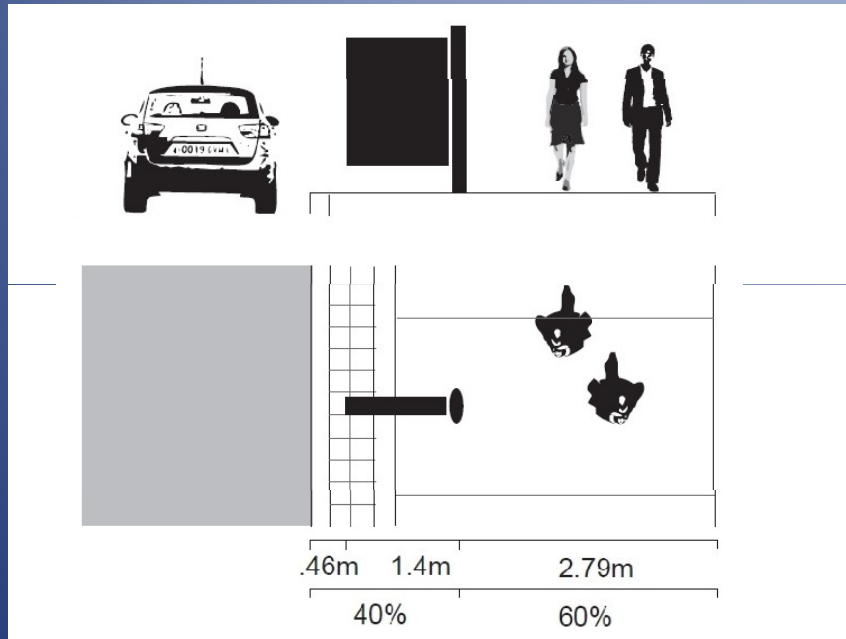
# Placement Guidelines



- The optimal location for InfoPillars is completely within the furnishing or planting zone of the sidewalk where they can be appropriately integrated into the streetscape, and not impede the passage of pedestrians.

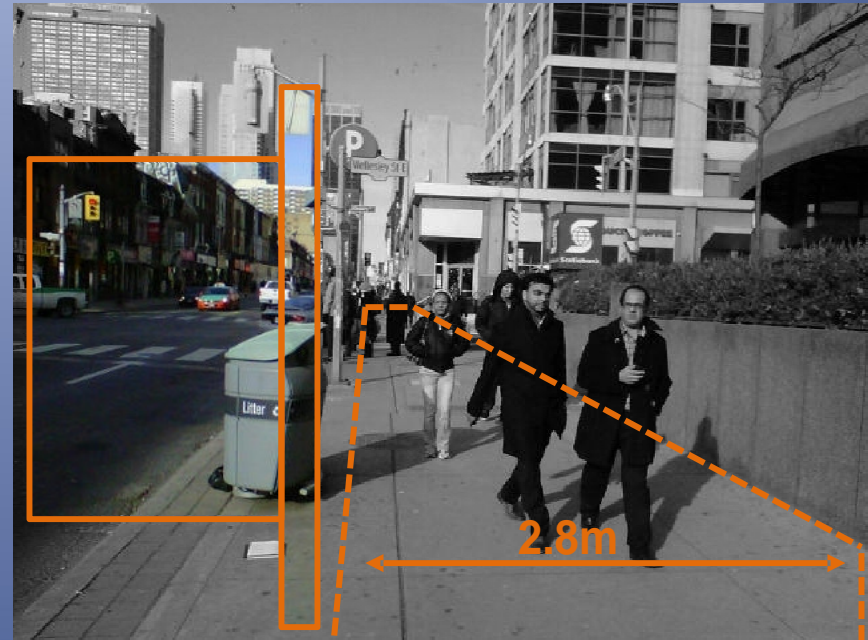
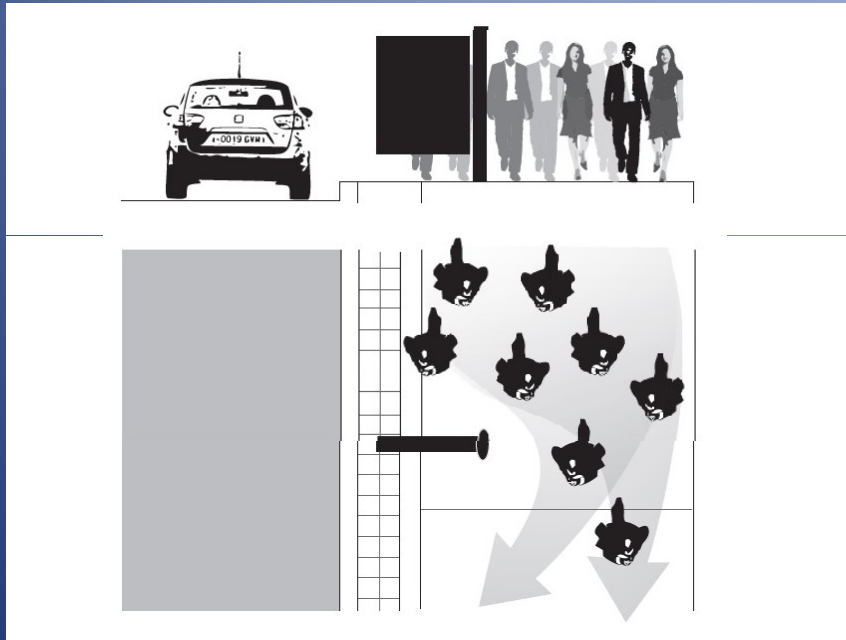


# Placement Guidelines



- Where the InfoPillar is not completely within the furnishing zone, it shall consume only up to 40% of the sidewalk from the curb face to property line, secured public setback and/or building face. There may be exceptions to this standard, and these will be handled on a case-by-case basis.

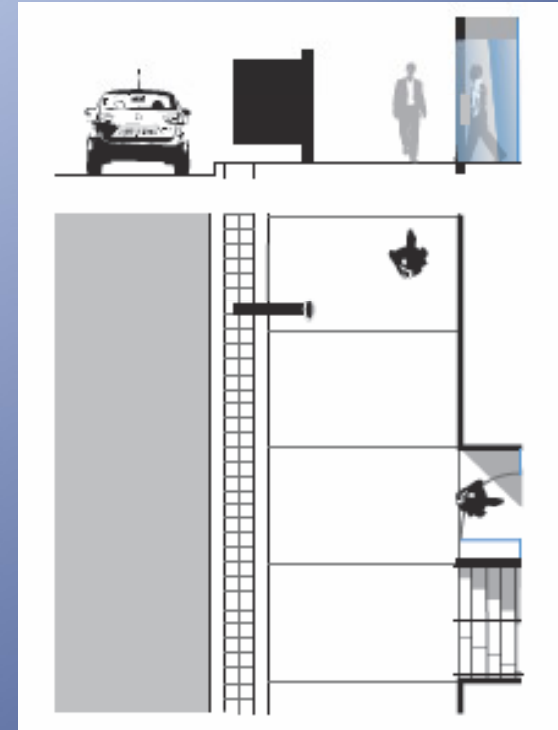
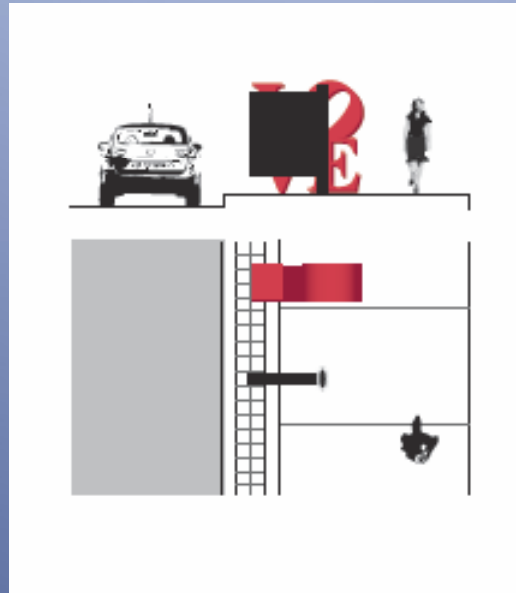
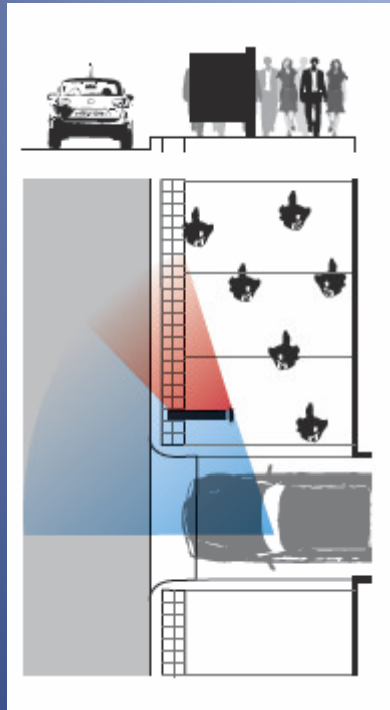
# Placement Guidelines



- Staff shall conduct pedestrian volume analysis in high pedestrian traffic areas to ensure pedestrian safety, particularly at peak hours.



# Placement Guidelines



Each location will be assessed to ensure that:

- i. all safety and sightline matters are addressed,
- ii. pedestrian volumes show sufficient room for pedestrian passage and safety during peak travel times,
- iii. relevant view corridors to heritage properties and public art are maintained,
- iv. InfoPillars are situated in such a way that they are offset and do not block or hinder access to building entrances, doorways or stairs.

# Placement Guidelines



- All streetscapes shall be returned to their original condition with the installation of the InfoPillar



- All InfoPillars will be installed with a wayfinding map
- Every attempt will be made to ensure maximum distribution across the city



## Moving forward:



- Transit Shelter roadside canopy consultation
- Focus on replacement of legacy shelters
- Poster column roll-out
- Multipublication boxes at TTC stations
- New designs for small litter bins
- Completion of last phase of STREETView business system – asset mapping