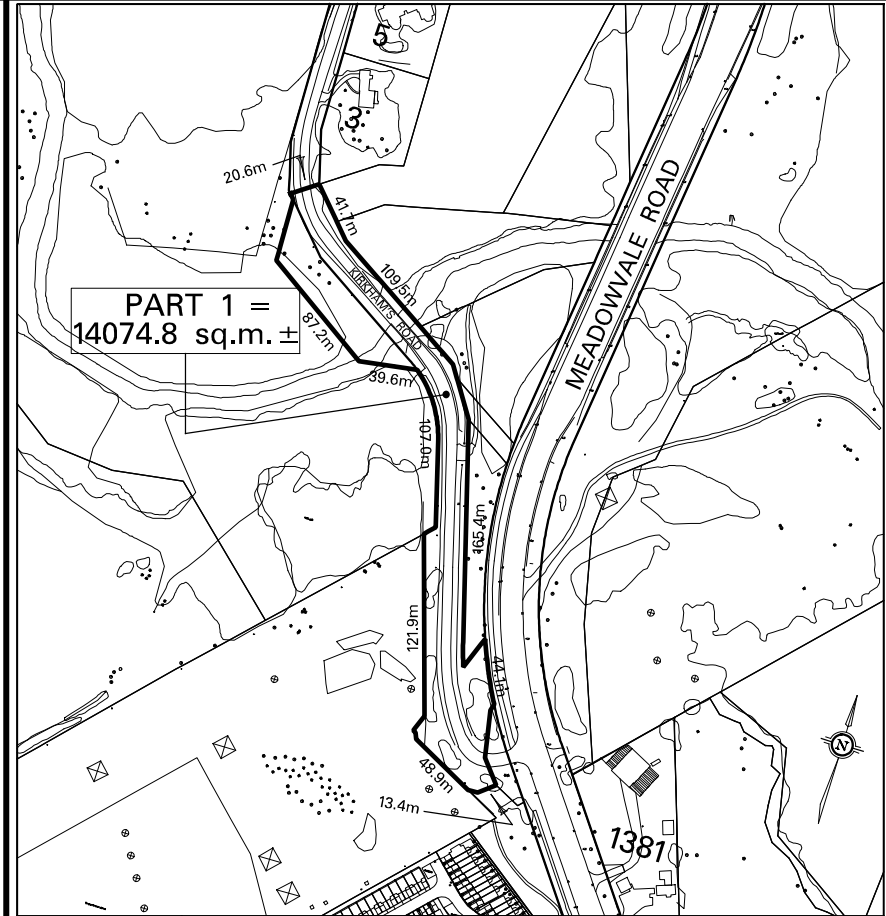
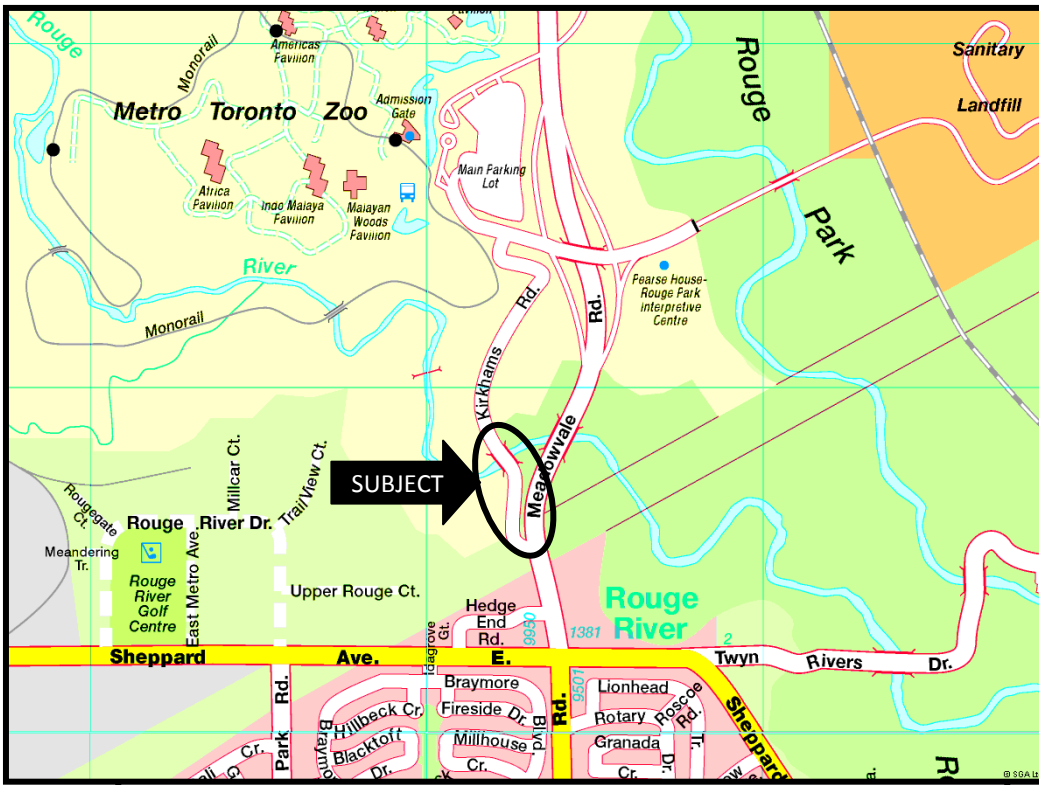


**Appendix "2" – Location Map
sc1201 – Ward 42**



<p>TECHNICAL SERVICES DIVISION SURVEY & MAPPING SERVICES</p>	PROPERTY INFORMATION SHEET	
	PROPOSED PERMANENT CLOSURE AND SALE OF A PORTION OF KIRKHAMS ROAD	
<p>NOTE: THIS SKETCH HAS BEEN COMPILED FROM OFFICE RECORDS</p>	<p>CHECK BY JOHN HOUSE WARD 42 – SCARBOROUGH-ROUGE RIVER PREPARED BY: DWAYNE PITT DATE: FEB 03, 2011</p>	<p>SKETCH No. PS-2011-007</p>