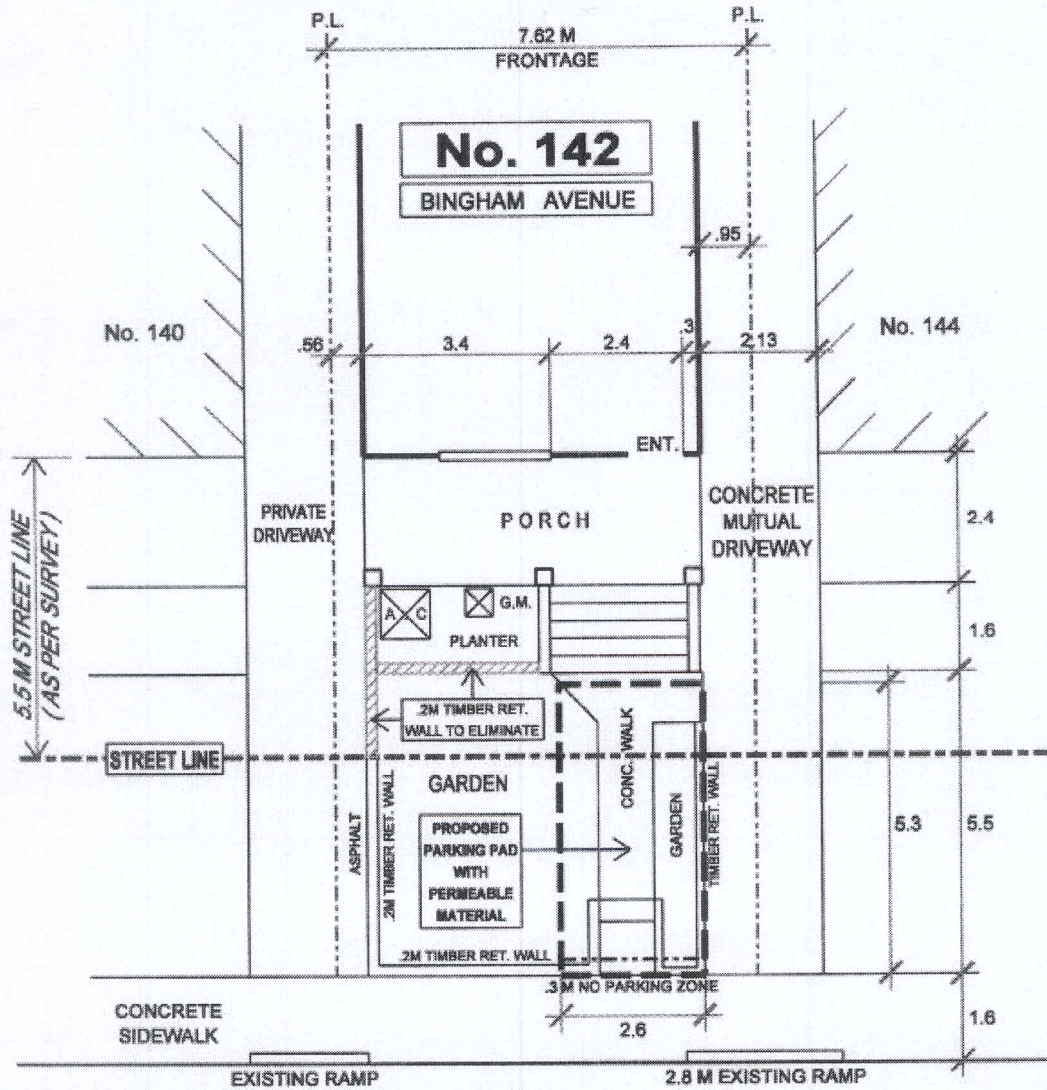


# FRONT YARD PARKING APPEAL - 142 BINGHAM AVENUE

## APPENDIX 'A'



## BINGHAM AVENUE

**NOTE:**  
 PERMIT PARKING ALTERNATE SIDES  
 NO LOSS OF PERMIT PARKING SPACE  
 DUE TO USE OF EXISTING RAMP



**TRANSPORTATION SERVICES DIVISION**  
 TORONTO AND EAST YORK DISTRICT  
 RIGHT OF WAY MANAGEMENT - OFF STREET PARKING



**FRONT YARD PARKING CHAPTER 918 F.Y.P. - 93290**

TOTAL PARKING AREA ON STREET ALLOWANCE	10.9 M <sup>2</sup>	PRIVATE PROPERTY			STREET ALLOWANCE		
		AREA M <sup>2</sup>	%	CODE	AREA M <sup>2</sup>	%	CODE
TOTAL AREA		21.3	100		31.9	100	
LANDSCAPED OPEN SPACE		12.6	59	50% min.	17.7	55	50% min.
PAVED AREA		8.7	41	50% max.	14.2	45	50% max.
SOFT LANDSCAPING		10.3	82	75% min.	15.3	86	75% min.

**REVISIONS**

Date	By
JUNE 09' 11	R.A.M.
AUG. 05' 11	R.A.M.
OCT. 06' 11	R.A.M.
JAN. 18' 12	R.A.M.

DRAWN BY: R. MUNSON

DATE: MAY 27' 11

SCALE: 1:100

# Front Yard Parking Appeal

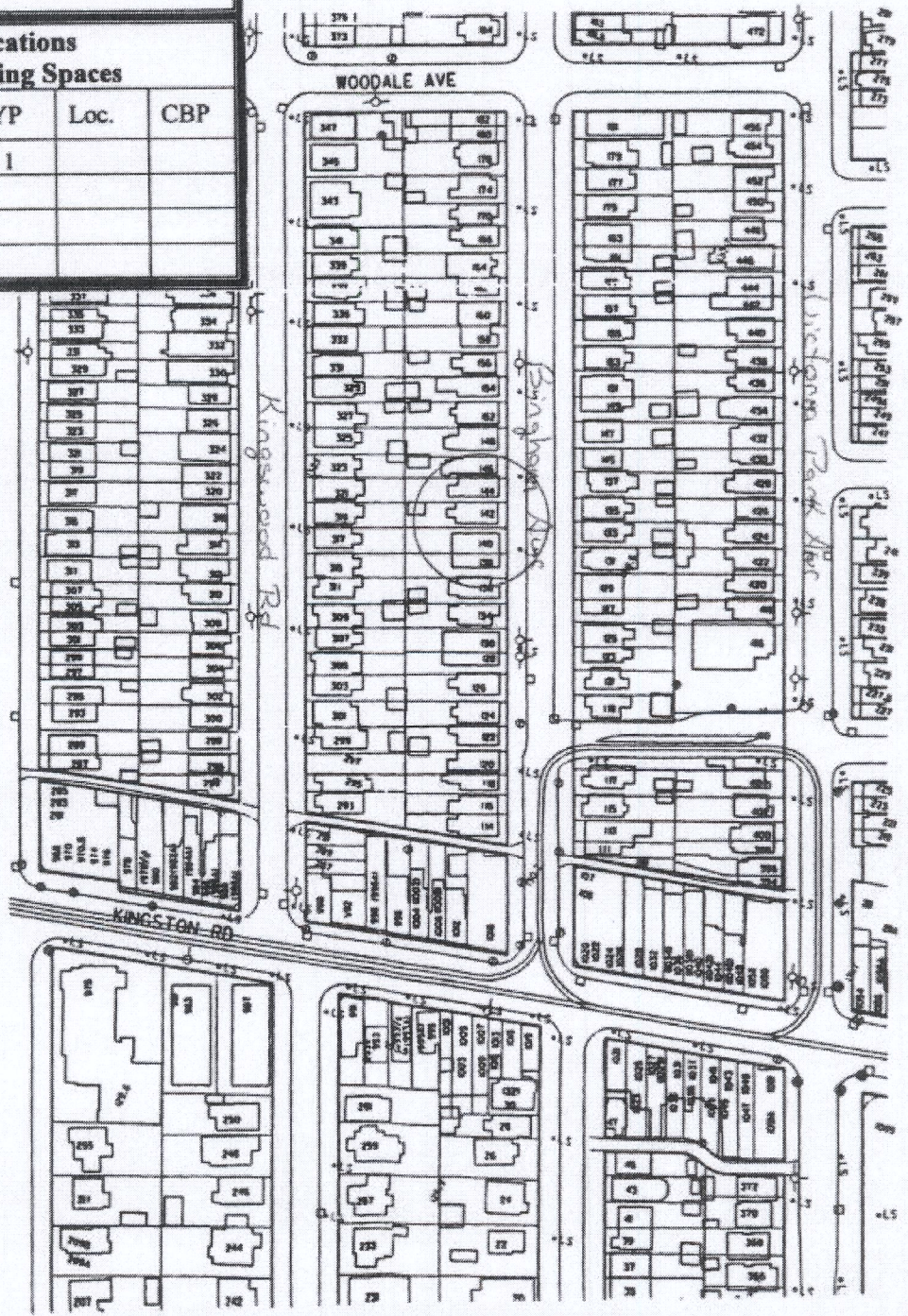
142 Bingham Avenue

APPENDIX "B"



Licensed Locations  
Number of Parking Spaces

Loc.	FYP	Loc.	FYP	Loc.	CBP
130	1	145	1		
134	1				
136	1				



**Front Yard Parking Appeal – 142 Bingham Avenue**

**APPENDIX ‘C’**



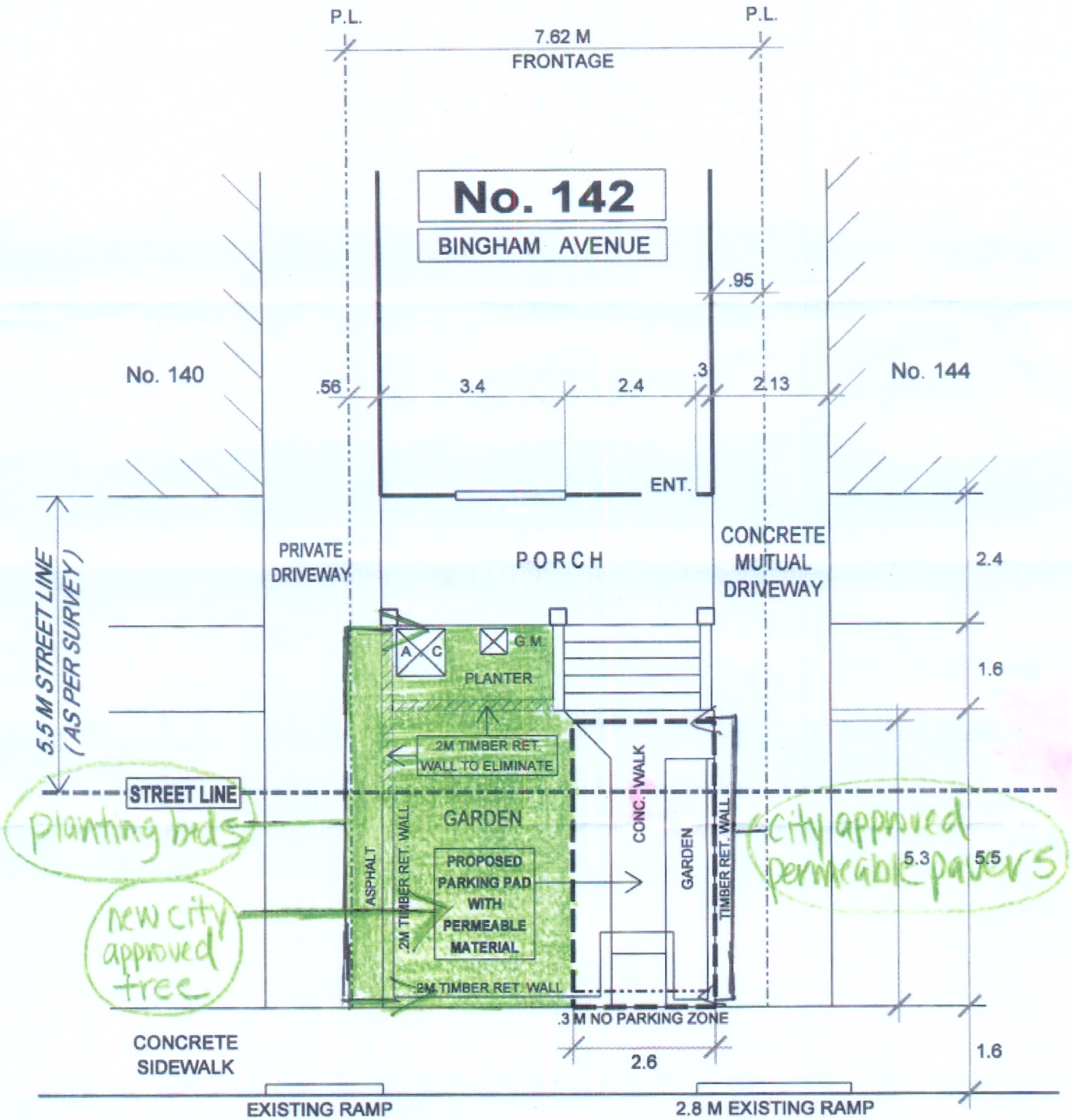
142 Bingham Avenue - May 9, 2011



142 Bingham Avenue – January 16, 2012

# FRONT YARD PARKING APPEAL - 142 BINGHAM AVENUE

## APPENDIX 'D'



# BINGHAM AVENUE