

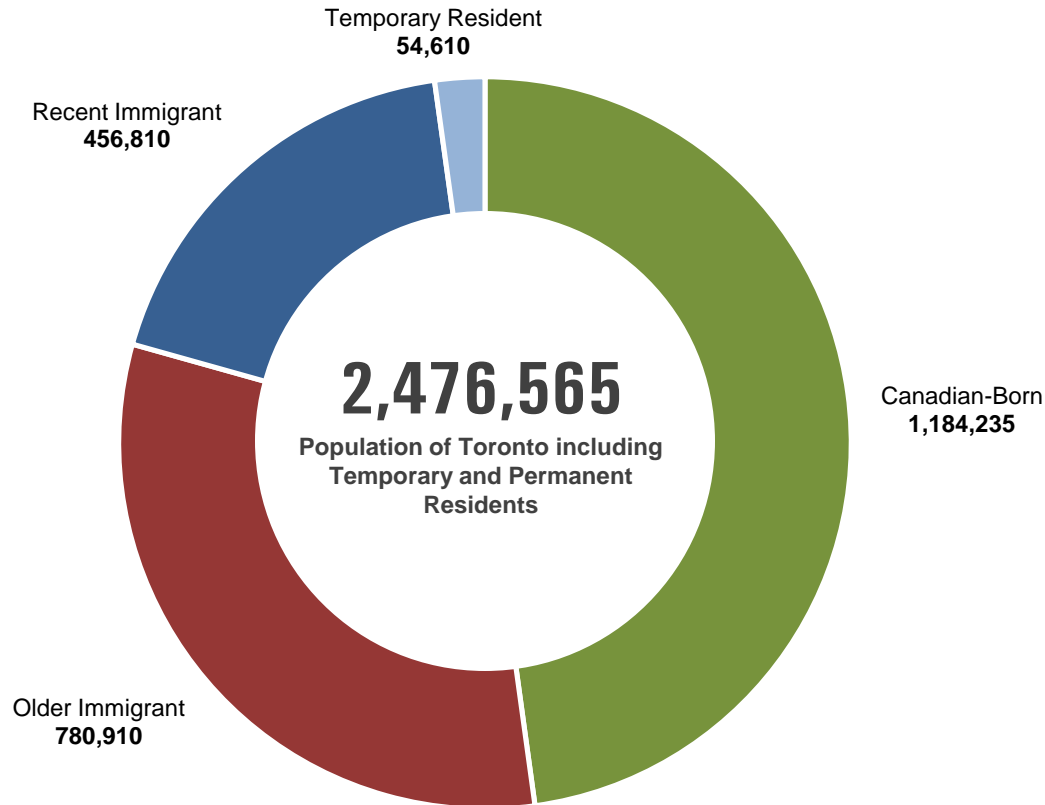
# Newcomer Demographics

**Social Policy, Analysis & Research  
Social Development, Finance & Administration Division**

**Last Updated: January 16, 2013**



# Components of Toronto's Population (2006 Census)



**18%**

are recent immigrants (less than 10 years)

**49%**

have non-English/French mother tongues

**140+**

number of different languages spoken in Toronto

**188**

number of different birth countries of recent immigrants

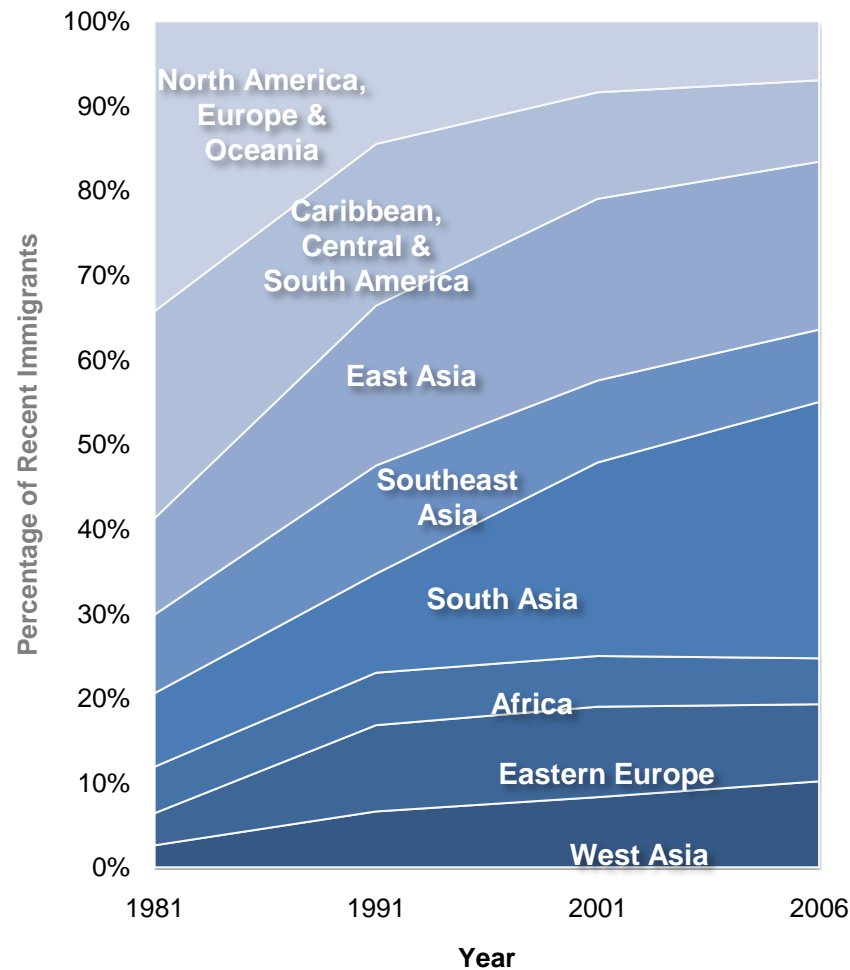
In the 2006 Census, permanent residents are counted as "immigrants"  
Source: Statistics Canada 2006 Census

# Birth Countries of Recent Immigrants

(Greater Toronto Area)

## GTA Recent Immigrants in 1981

North America, Europe & Oceania	<b>34%</b>
Caribbean, Central & South America	<b>25%</b>
East Asia	<b>11%</b>
Southeast Asia	<b>9%</b>
South Asia	<b>9%</b>
Africa	<b>6%</b>
Eastern Europe	<b>4%</b>
West Asia	<b>3%</b>



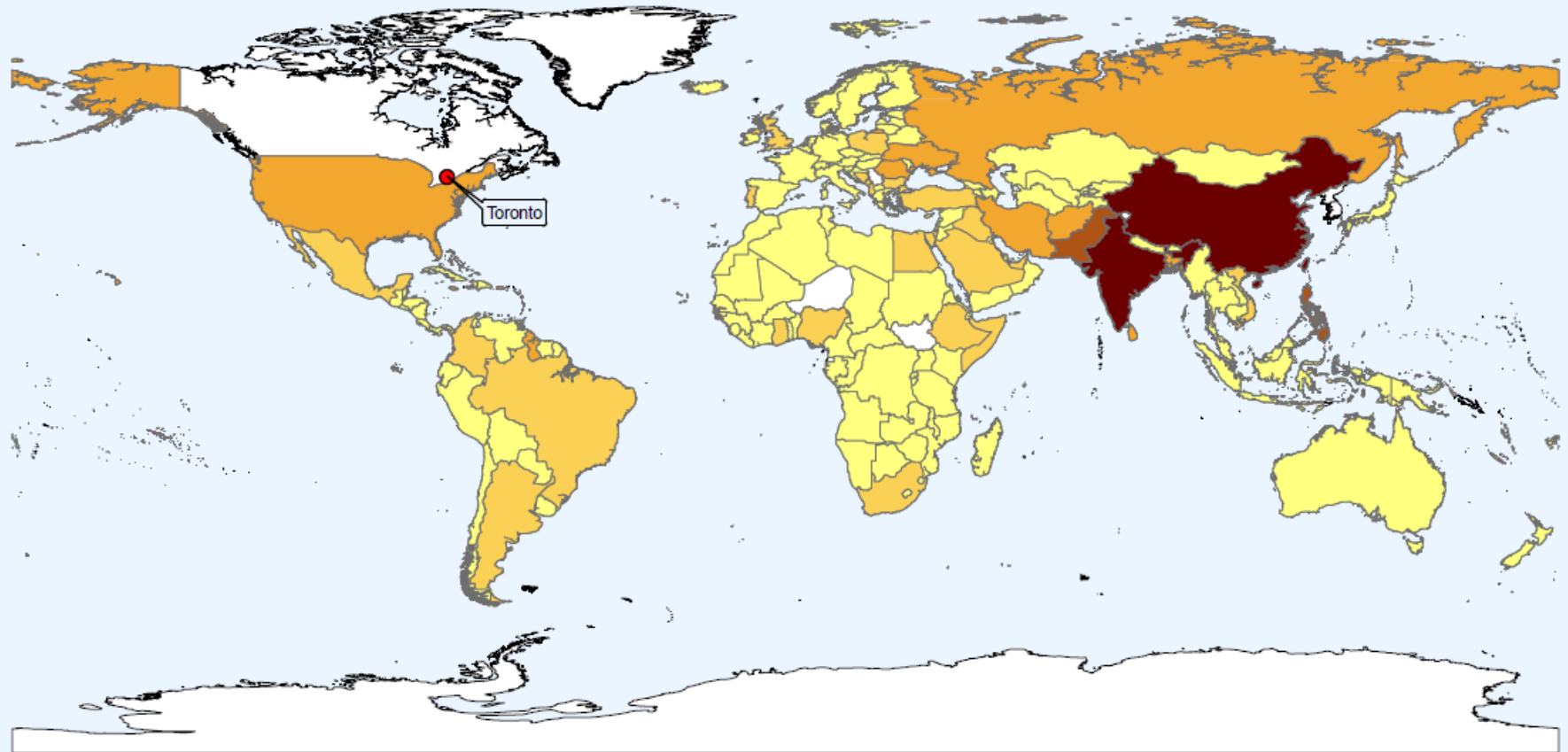
## GTA Recent Immigrants in 2006

North America, Europe & Oceania	<b>7%</b>
Caribbean, Central & South America	<b>10%</b>
East Asia	<b>20%</b>
Southeast Asia	<b>9%</b>
South Asia	<b>30%</b>
Africa	<b>5%</b>
Eastern Europe	<b>9%</b>
West Asia	<b>10%</b>

"Recent immigrant" is defined as having arrived in Canada within 10 years of each census date and includes permanent residents. Data are for the Toronto CMA.

Source: *Immigrants in Canada's Census Metropolitan Areas* (Schellenberg, 2004); Statistics Canada 2006 Census

## Recent Immigrants to Toronto



### Legend

#### Recent Immigrants

10 - 2,825

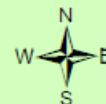
2,826 - 9,175

9,176 - 36,230

36,231 - 65,505

65,506 - 130,780

No Data



0 1,400 2,800 4,200 5,600 Km



Source: Statistics Canada Census 2006; City of Toronto.

Copyright (c) 2012 City of Toronto. All Rights Reserved.

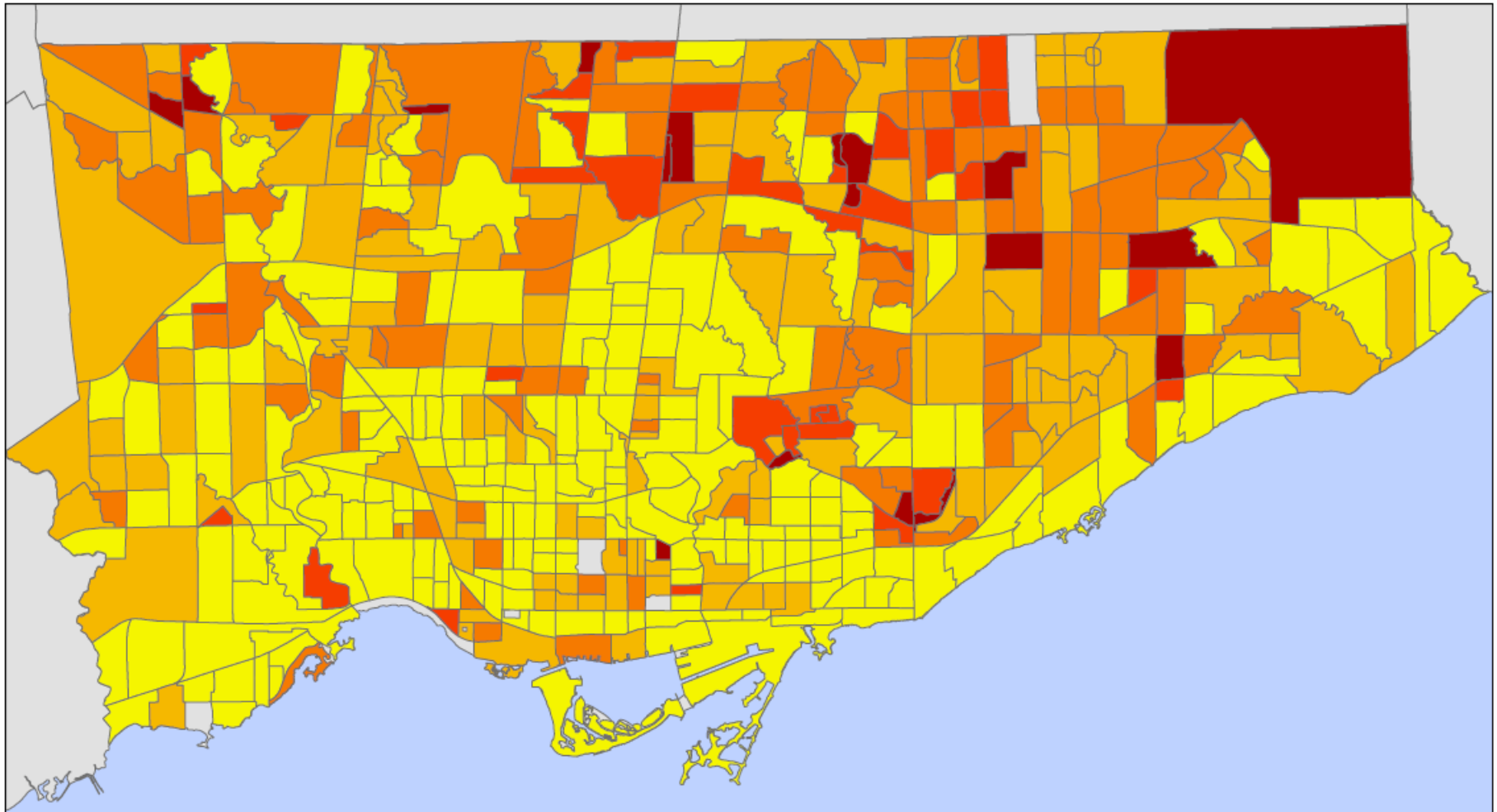
Published: September 21, 2012

Prepared by: Social Policy Analysis & Research.

Contact: [spar@toronto.ca](mailto:spar@toronto.ca)

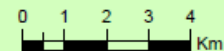
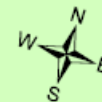
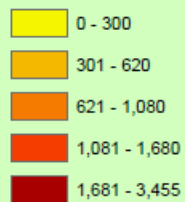
# Recent Immigrants 2006

By Census Tract



## Legend

Recent Immigrants (2001-2006) (persons)

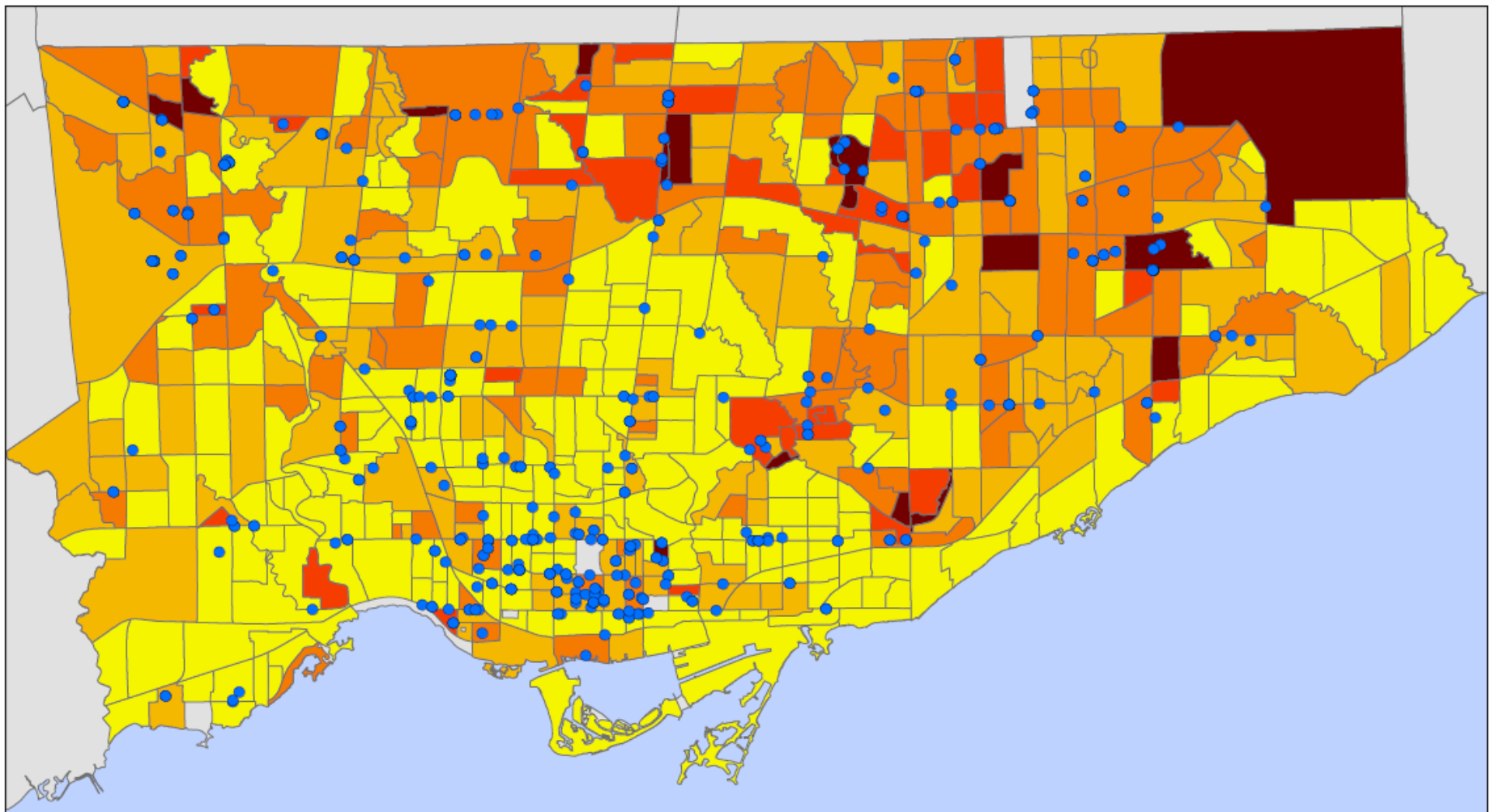


Source: Statistics Canada, Census 2006; City of Toronto.

Copyright (c) 2007 City of Toronto. All Rights Reserved.  
Published: December 2007

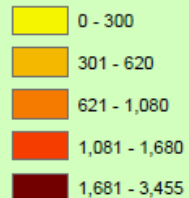
Prepared by: Social Policy Analysis & Research  
Contact: [spar@toronto.ca](mailto:spar@toronto.ca)

# Recent Immigrants and Immigrant Services By Census Tract

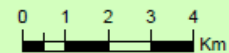


## Legend

### Recent Immigrants (2001-2006) (persons)



- Bluebook - Immigrant and Settlement Services
- Bluebook - Keyword Search

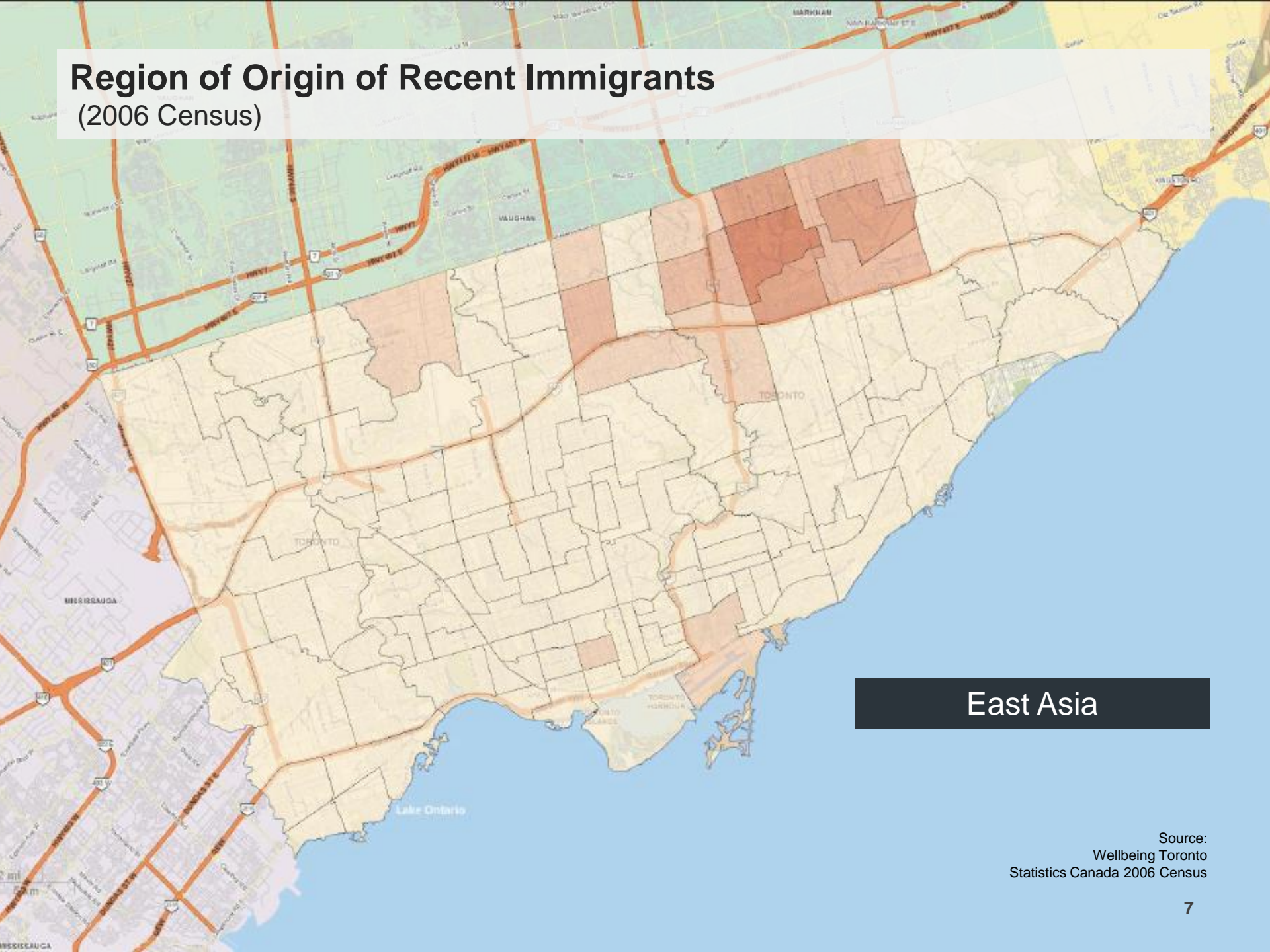


Source: Statistics Canada, Census 2006; City of Toronto;  
211toronto.ca

Copyright (c) 2008 City of Toronto. All Rights Reserved.  
Published: October 2008  
Prepared by: Social Policy Analysis & Research  
Contact: [spar@toronto.ca](mailto:spar@toronto.ca)



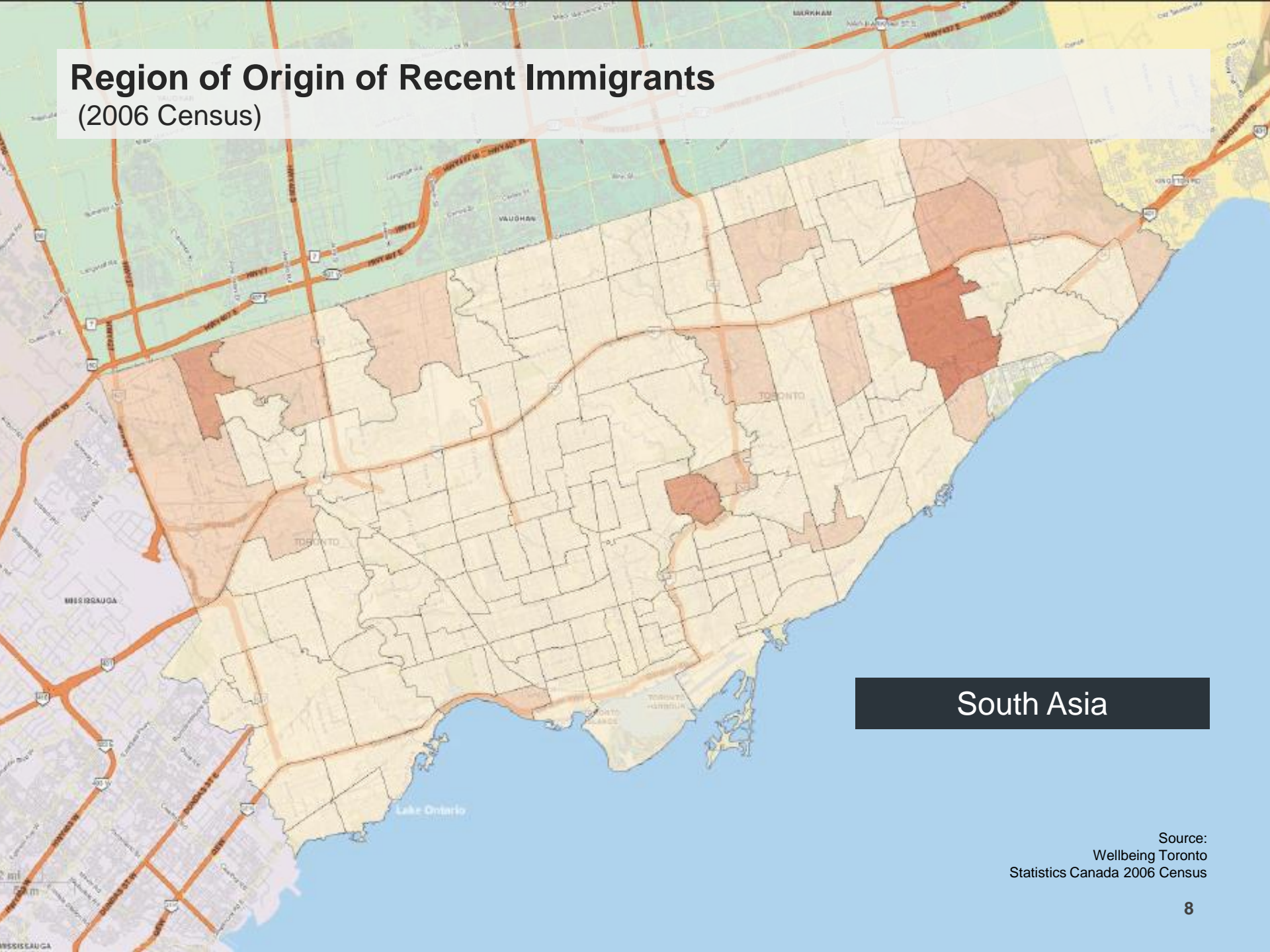
# Region of Origin of Recent Immigrants (2006 Census)



East Asia

Source:  
Wellbeing Toronto  
Statistics Canada 2006 Census

# Region of Origin of Recent Immigrants (2006 Census)

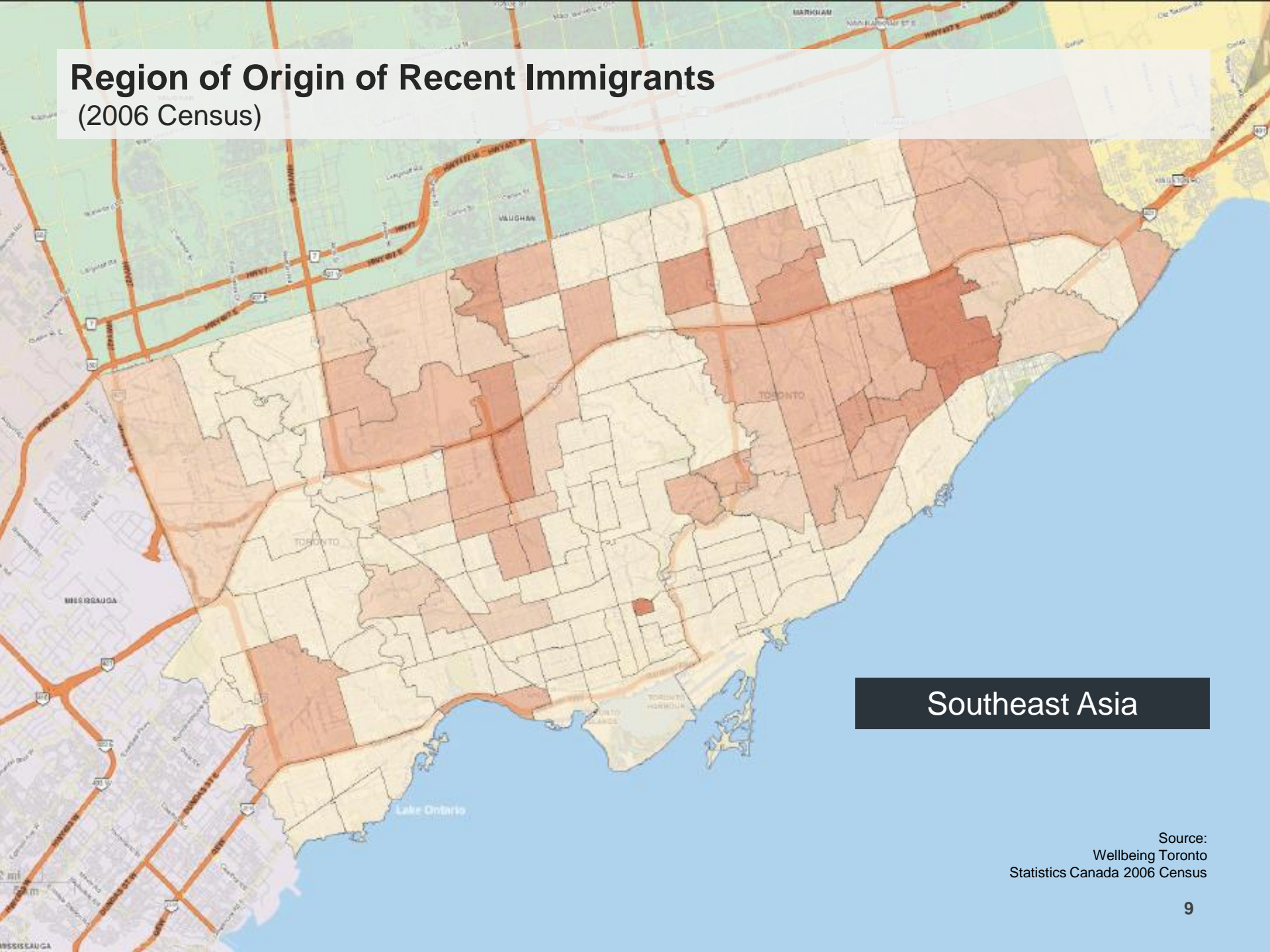


South Asia

Source:  
Wellbeing Toronto  
Statistics Canada 2006 Census



# Region of Origin of Recent Immigrants (2006 Census)

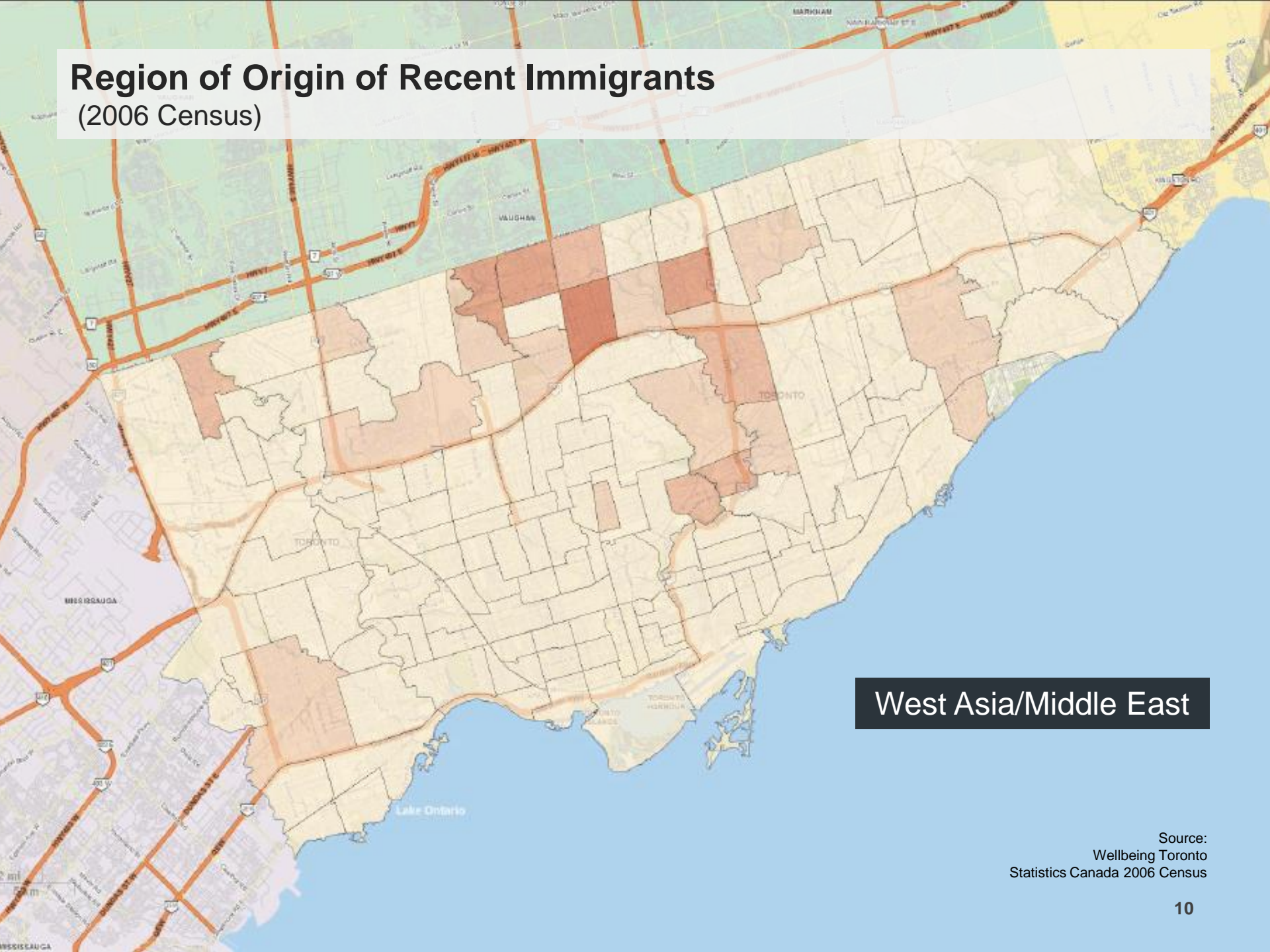


Southeast Asia

Source:  
Wellbeing Toronto  
Statistics Canada 2006 Census



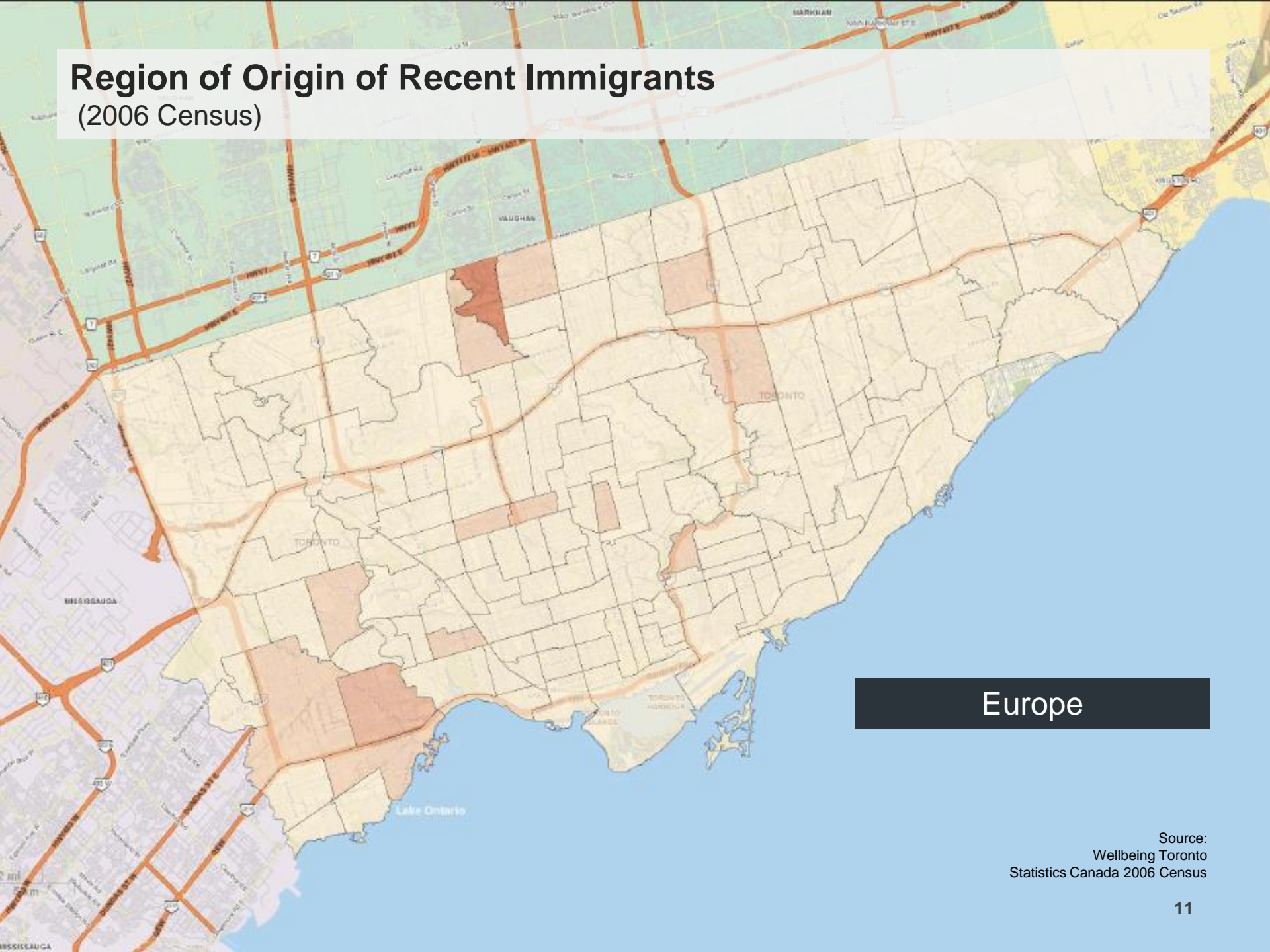
# Region of Origin of Recent Immigrants (2006 Census)



West Asia/Middle East

Source:  
Wellbeing Toronto  
Statistics Canada 2006 Census

# Region of Origin of Recent Immigrants (2006 Census)

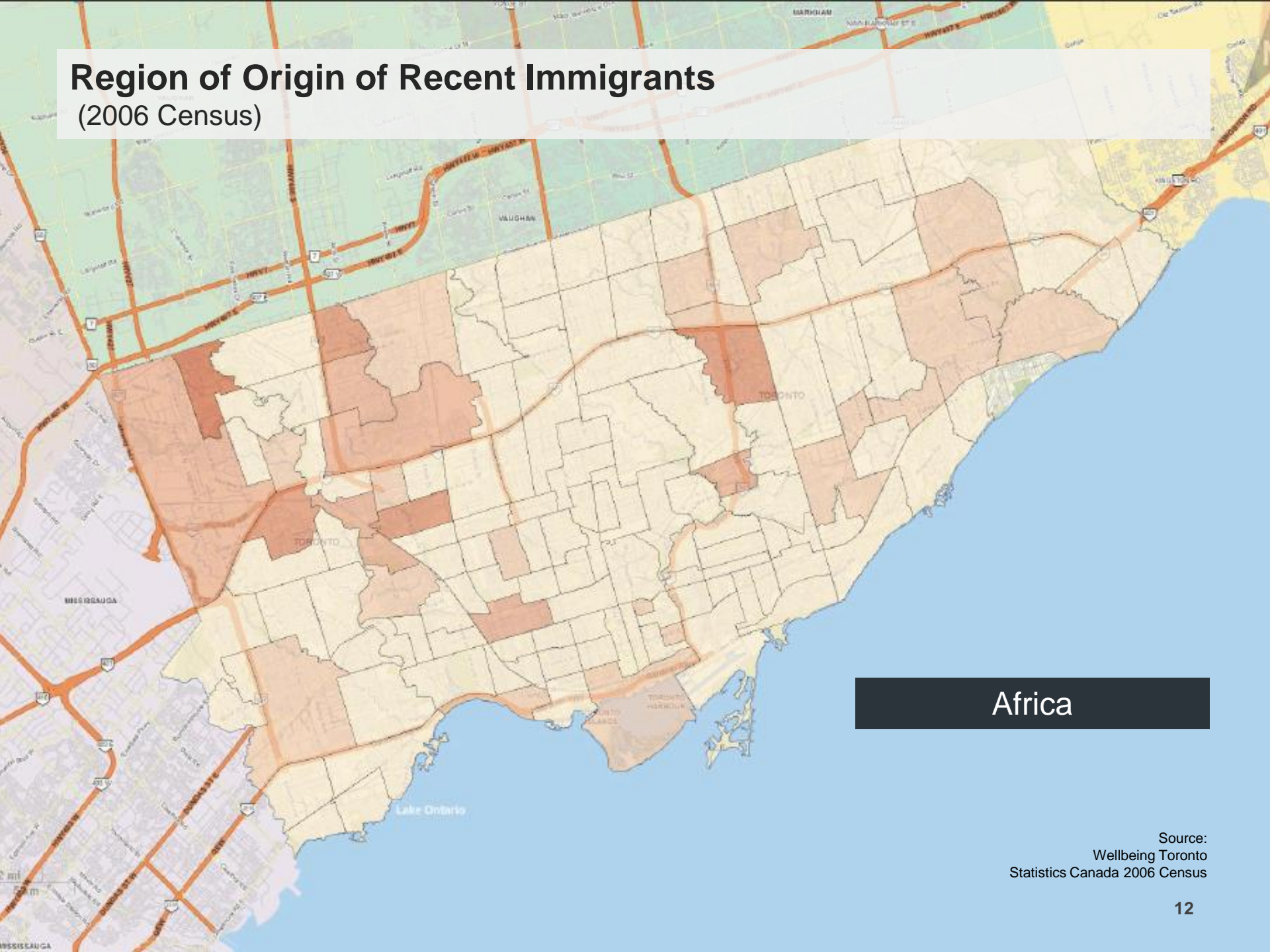


Europe

Source:  
Wellbeing Toronto  
Statistics Canada 2006 Census



# Region of Origin of Recent Immigrants (2006 Census)

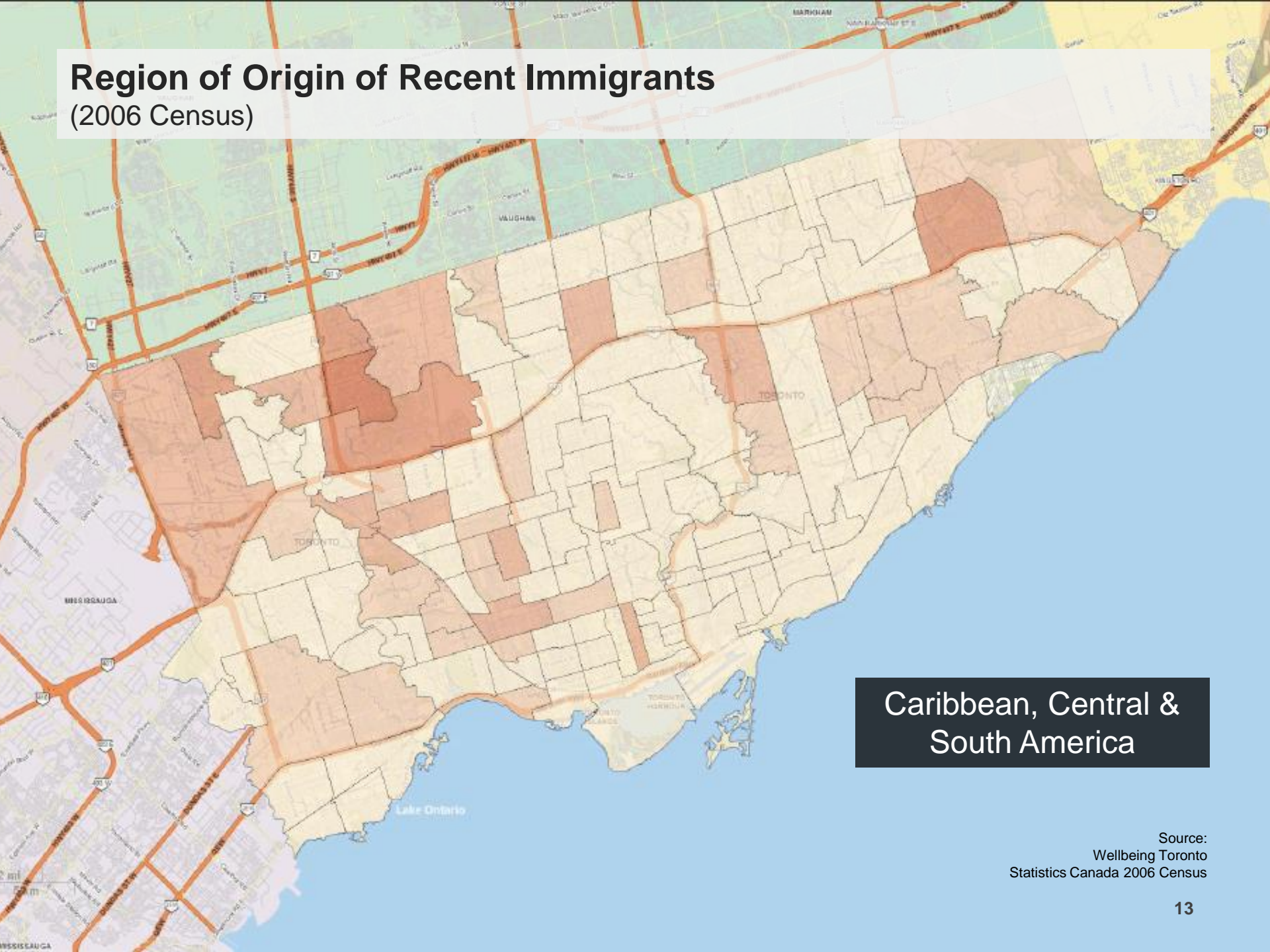


Africa

Source:  
Wellbeing Toronto  
Statistics Canada 2006 Census



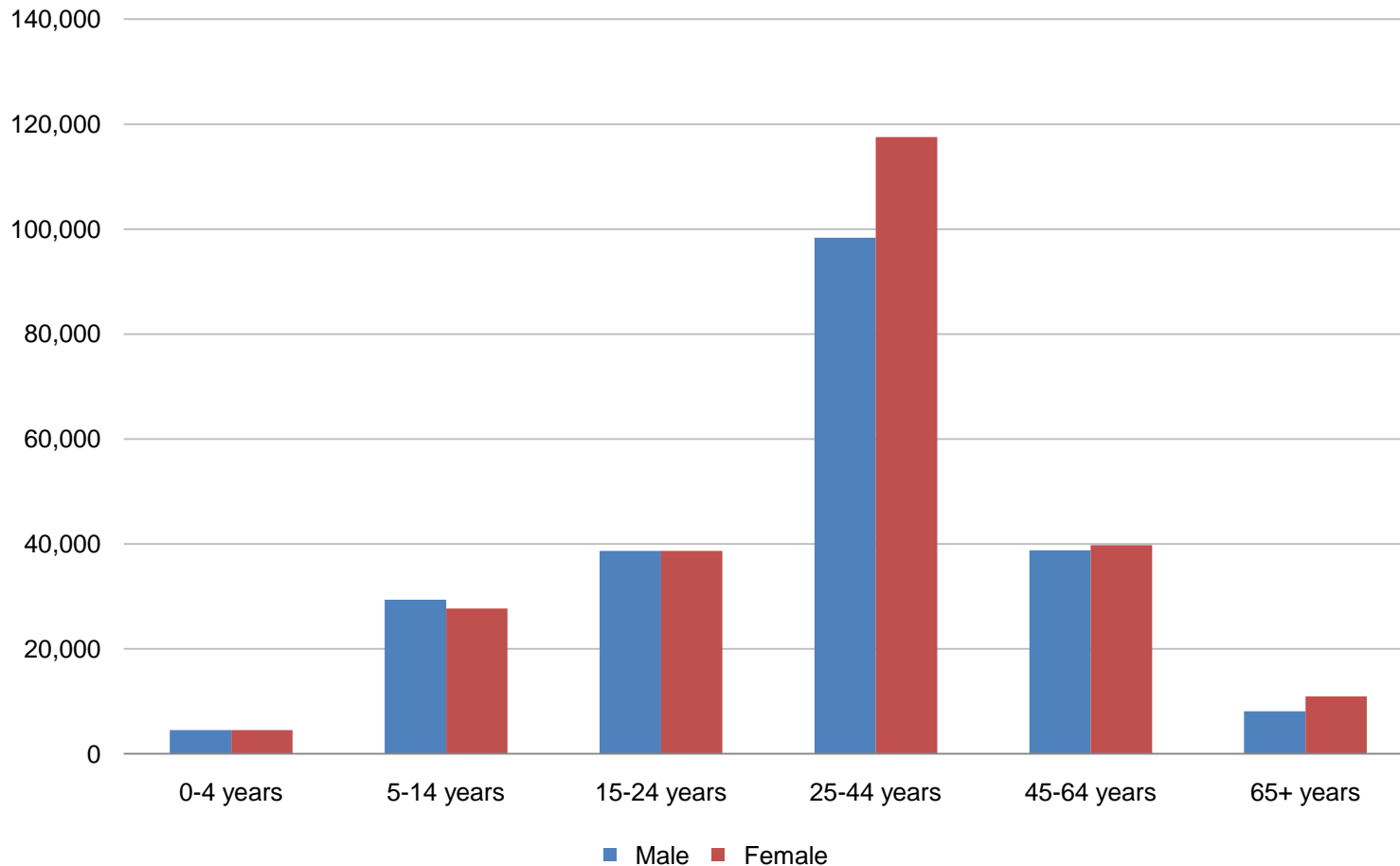
# Region of Origin of Recent Immigrants (2006 Census)



Caribbean, Central &  
South America

Source:  
Wellbeing Toronto  
Statistics Canada 2006 Census

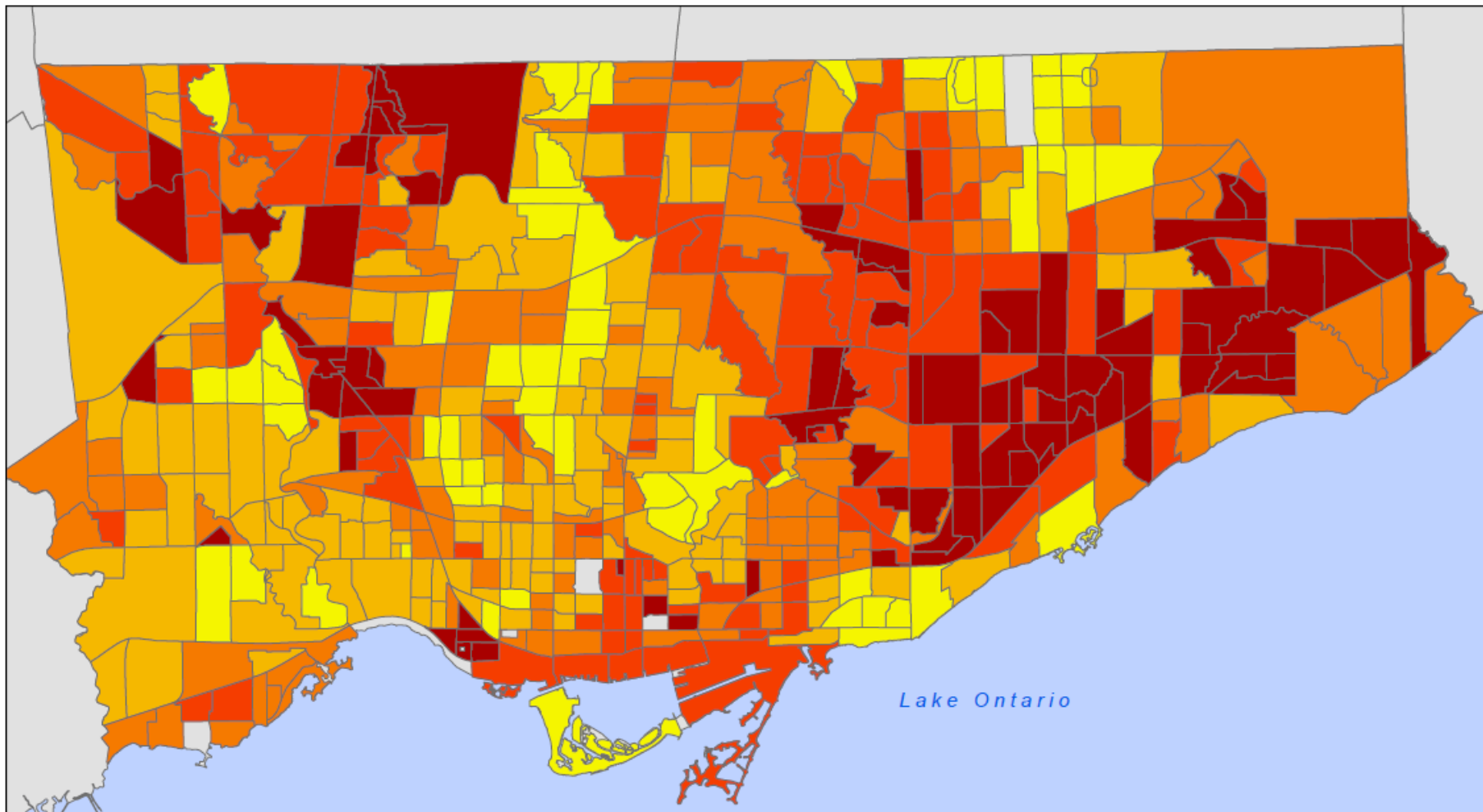
# Recent Immigrants in Toronto by Age and Sex (2006)



In the 2006 Census, permanent residents are counted as "immigrants"  
Source: Statistics Canada 2006 Census

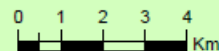
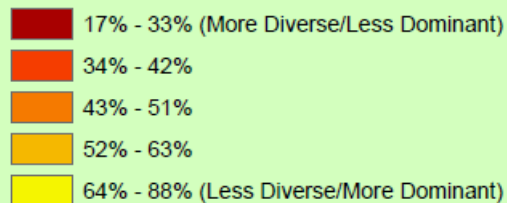
# The Toronto Mosaic 1

Dominance of Primary Ethnic Origin Group by Census Tract



## Legend

### Percentage of Population for Primary Ethnic Group



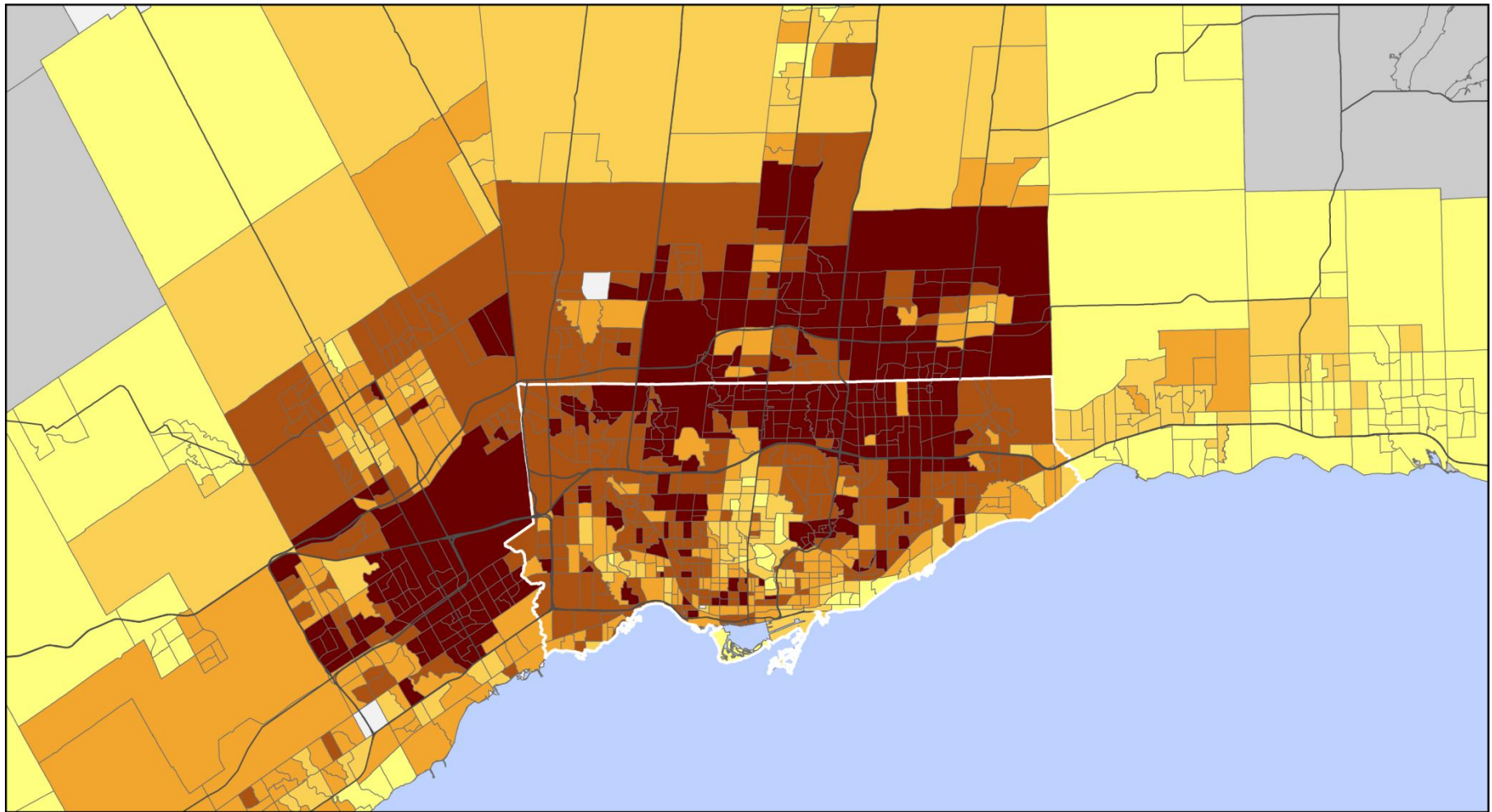
Source: Statistics Canada, Census 2006; City of Toronto.

Copyright (c) 2008 City of Toronto. All Rights Reserved.  
Published: September 2008  
Prepared by: Social Policy Analysis & Research  
Contact: [spar@toronto.ca](mailto:spar@toronto.ca)



# Linguistic Diversity Index

By Census Tract



## Legend

### Linguistic Diversity Index Value

#### Less Diverse

0.10 - 0.30

0.31 - 0.46

0.47 - 0.62

0.63 - 0.75

0.76 - 0.91

#### More Diverse

No Data

Linguistic diversity:  
The probability that any two people selected  
at random would have different mother tongues.  
Calculated using Greenberg's Linguistic  
Diversity Index.



0 2.5 5 7.5 10  
Km



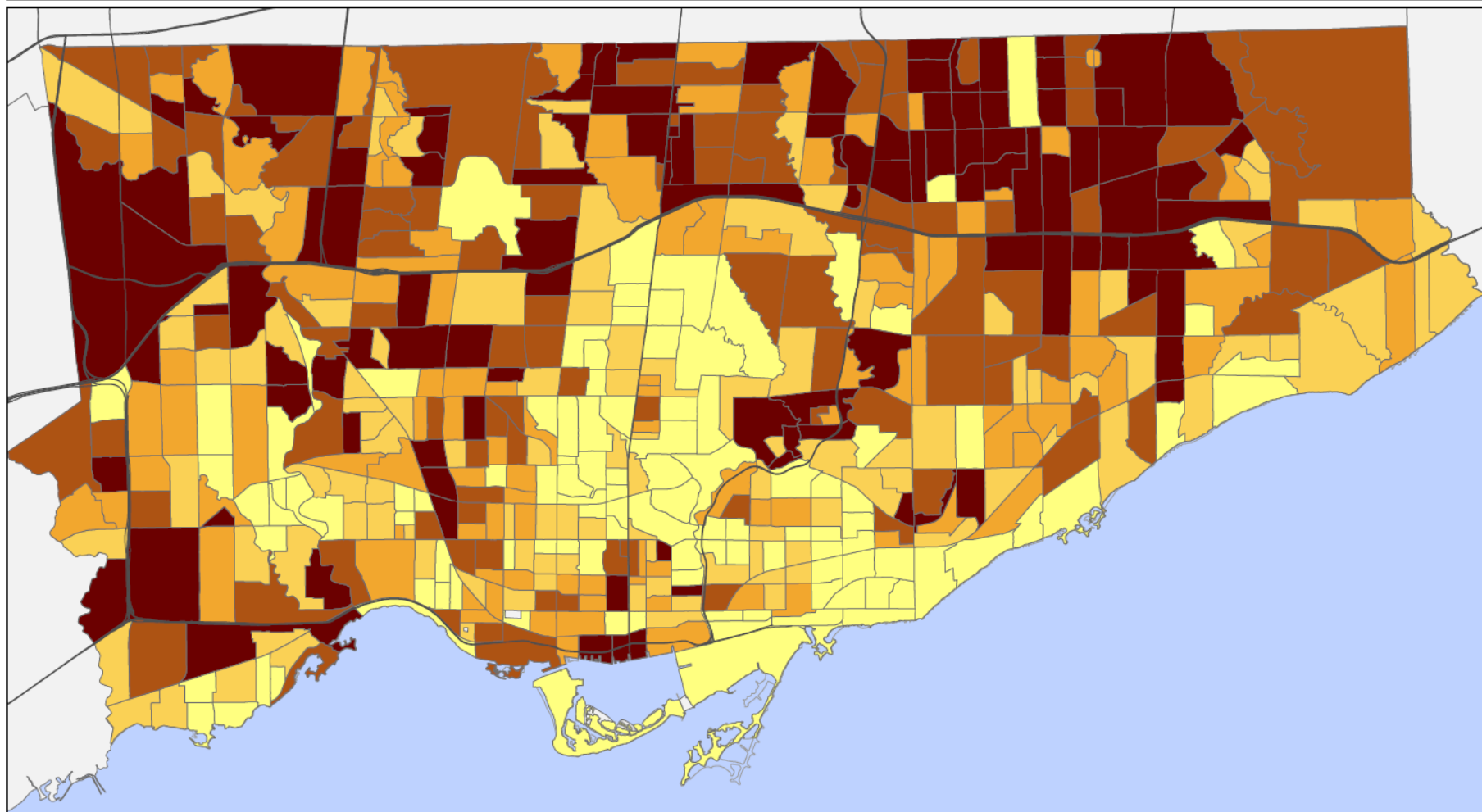
Source: Statistics Canada, Census 2011; City of Toronto.

Copyright (c) 2012 City of Toronto. All Rights Reserved.  
Published: October 24, 2012  
Prepared by: Social Policy Analysis & Research  
Contact: [spar@toronto.ca](mailto:spar@toronto.ca)



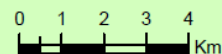
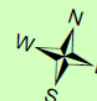
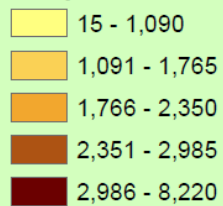
# Distribution of People with Non-Official Language Mother Tongues (Allophones)

By Census Tract



## Legend

### Allophones



Source: Statistics Canada, Census 2011; City of Toronto.

Copyright (c) 2012 City of Toronto. All Rights Reserved.  
Published: October 31, 2012  
Prepared by: Social Policy Analysis & Research  
Contact: [spar@toronto.ca](mailto:spar@toronto.ca)

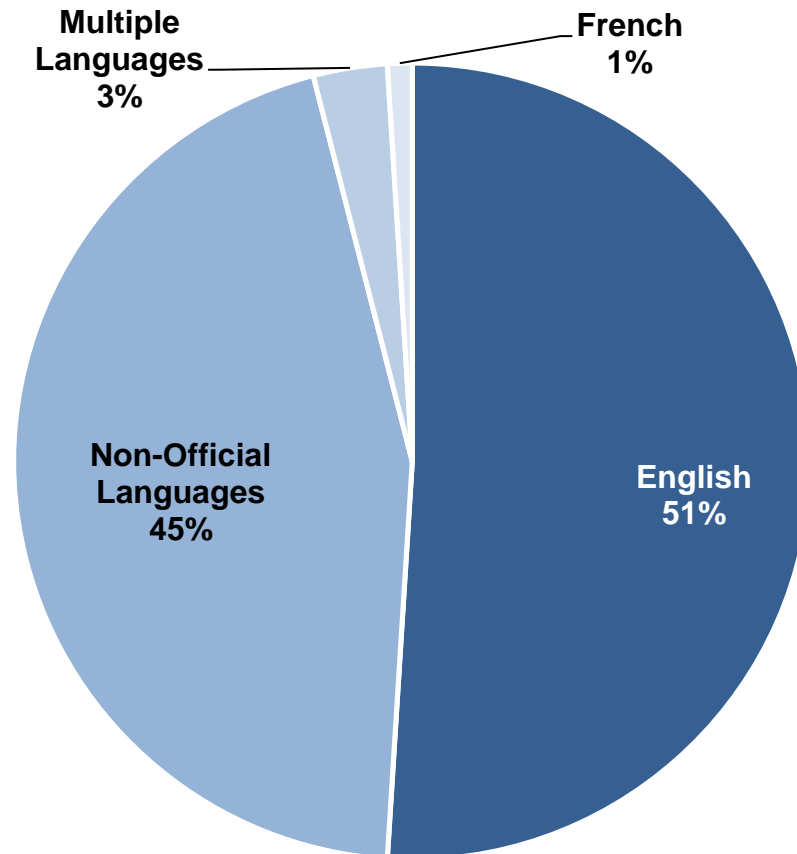
# Top-10 Non-Official Mother Tongues

(City of Toronto / 2011 Census)

## Non-Official Mother Tongues

<b>1</b>	<b>Chinese languages</b> 233,430
	Mandarin 59,820 Cantonese 83,955 Other 91,210
<b>2</b>	<b>Italian</b> 71,721
<b>3</b>	<b>Spanish</b> 70,760
<b>4</b>	<b>Tagalog</b> 70,465
<b>5</b>	<b>Tamil</b> 61,600
<b>6</b>	<b>Portuguese</b> 58,175
<b>7</b>	<b>Persian (Farsi)</b> 41,905
<b>8</b>	<b>Urdu</b> 38,005
<b>9</b>	<b>Russian</b> 36,950
<b>10</b>	<b>Korean</b> 31,135

## Mother tongue



Source: Statistics Canada 2011 Census

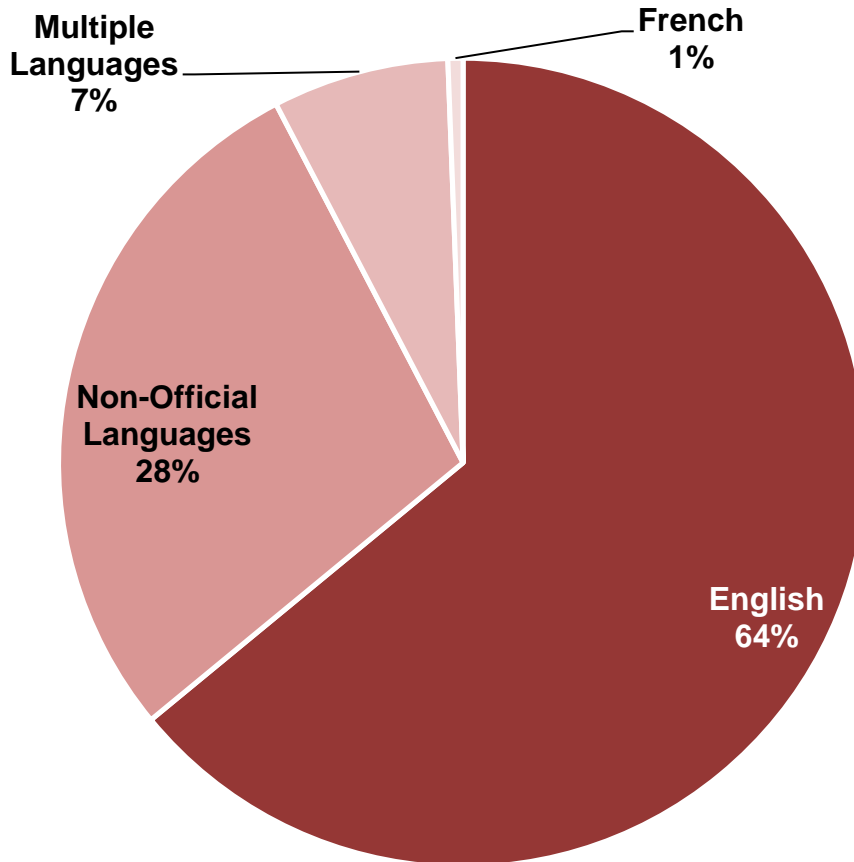
# Top-10 Non-Official Home Languages

(City of Toronto / 2011 Census)

## Non-Official Home Languages

<b>1</b>	<b>Chinese languages</b> 180,945
	Mandarin 50,430 Cantonese 67,210 Other 64,075
<b>2</b>	<b>Tamil</b> 48,680
<b>3</b>	<b>Spanish</b> 45,330
<b>4</b>	<b>Tagalog</b> 37,195
<b>5</b>	<b>Italian</b> 35,025
<b>6</b>	<b>Portuguese</b> 34,580
<b>7</b>	<b>Persian (Farsi)</b> 30,595
<b>8</b>	<b>Russian</b> 26,935
<b>9</b>	<b>Urdu</b> 26,590
<b>10</b>	<b>Korean</b> 23,380

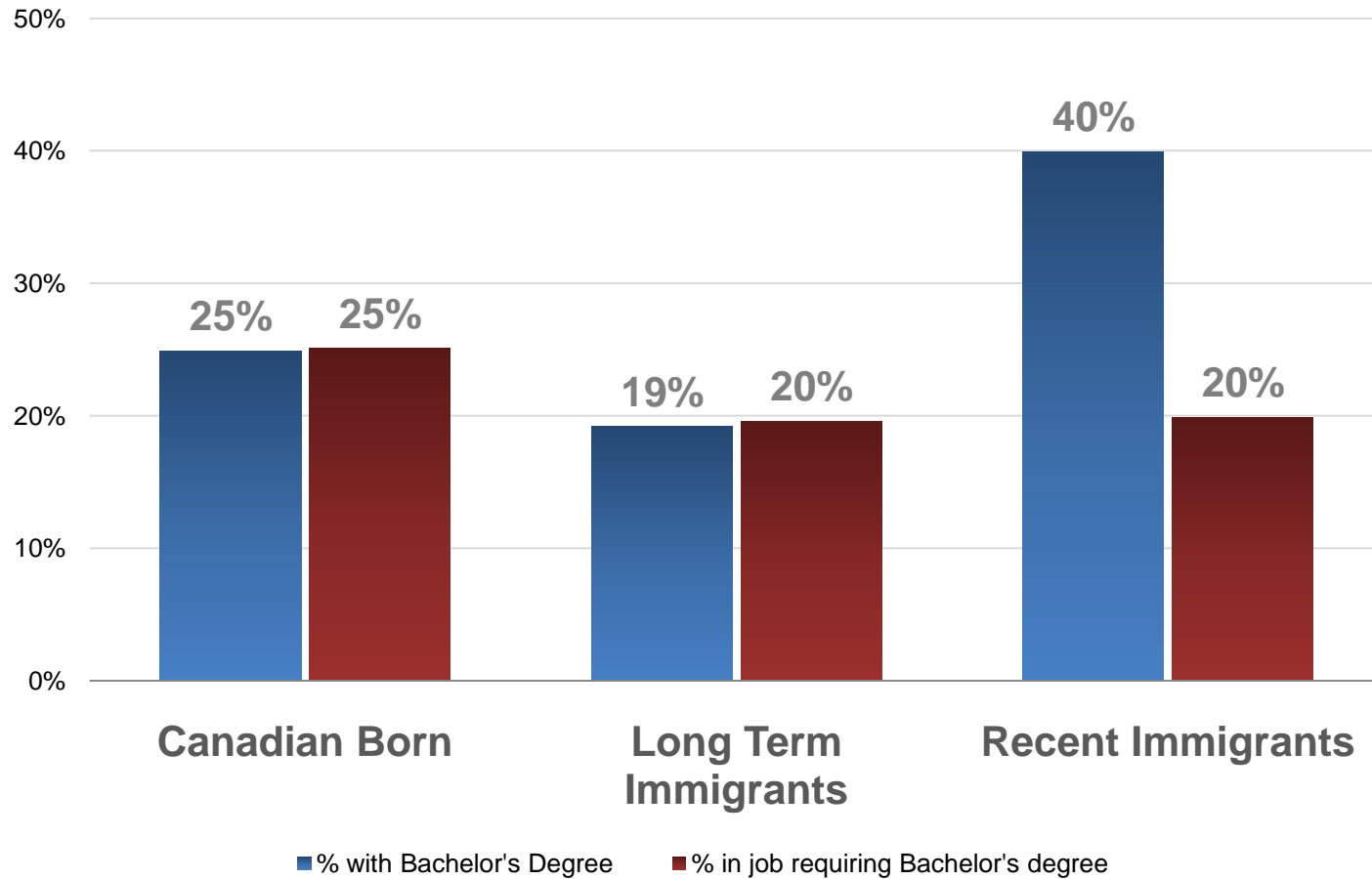
## Language spoken regularly at home



Source: Statistics Canada 2011 Census

# Education and Occupation

(Greater Toronto Area, 2006)



Data for residents of the Toronto CMA

Source: Statistics Canada 2006 Census



# Percentage under Low Income Cut-Off (LICO)

(City of Toronto, 2006)

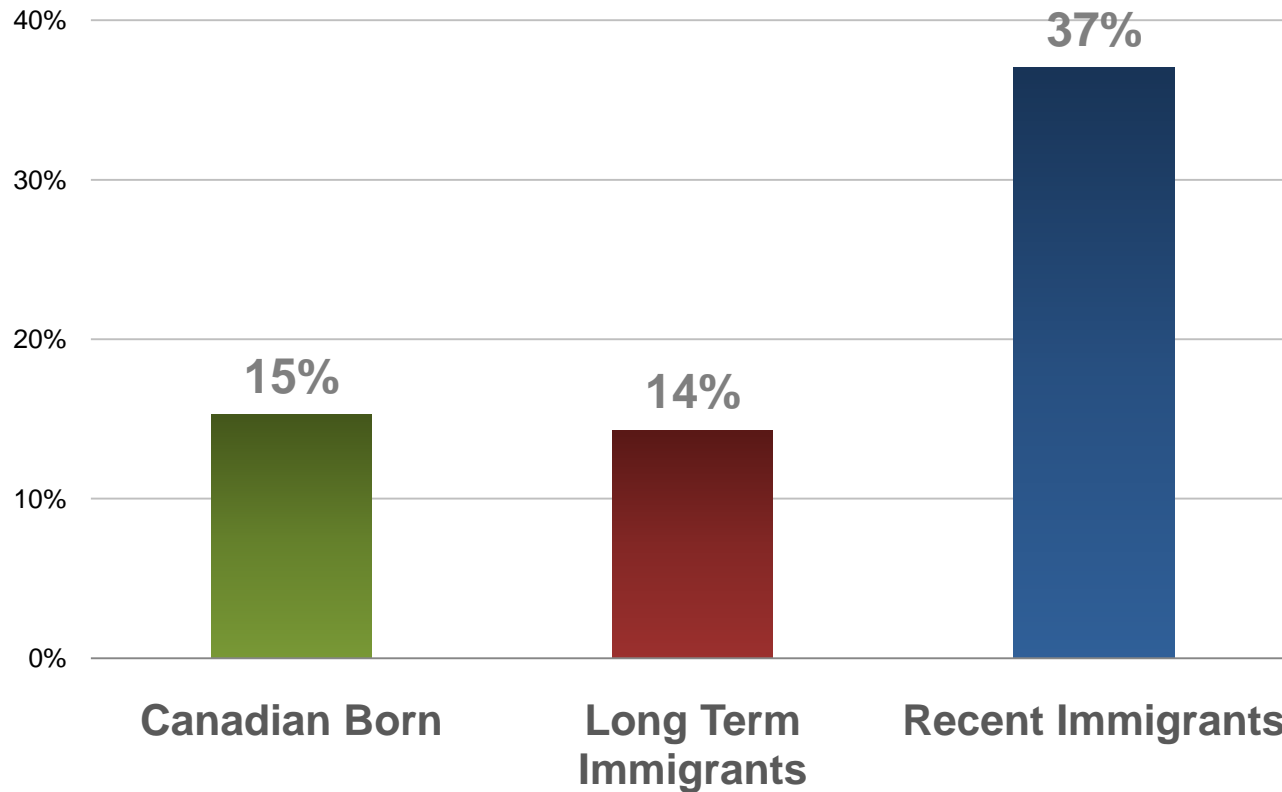
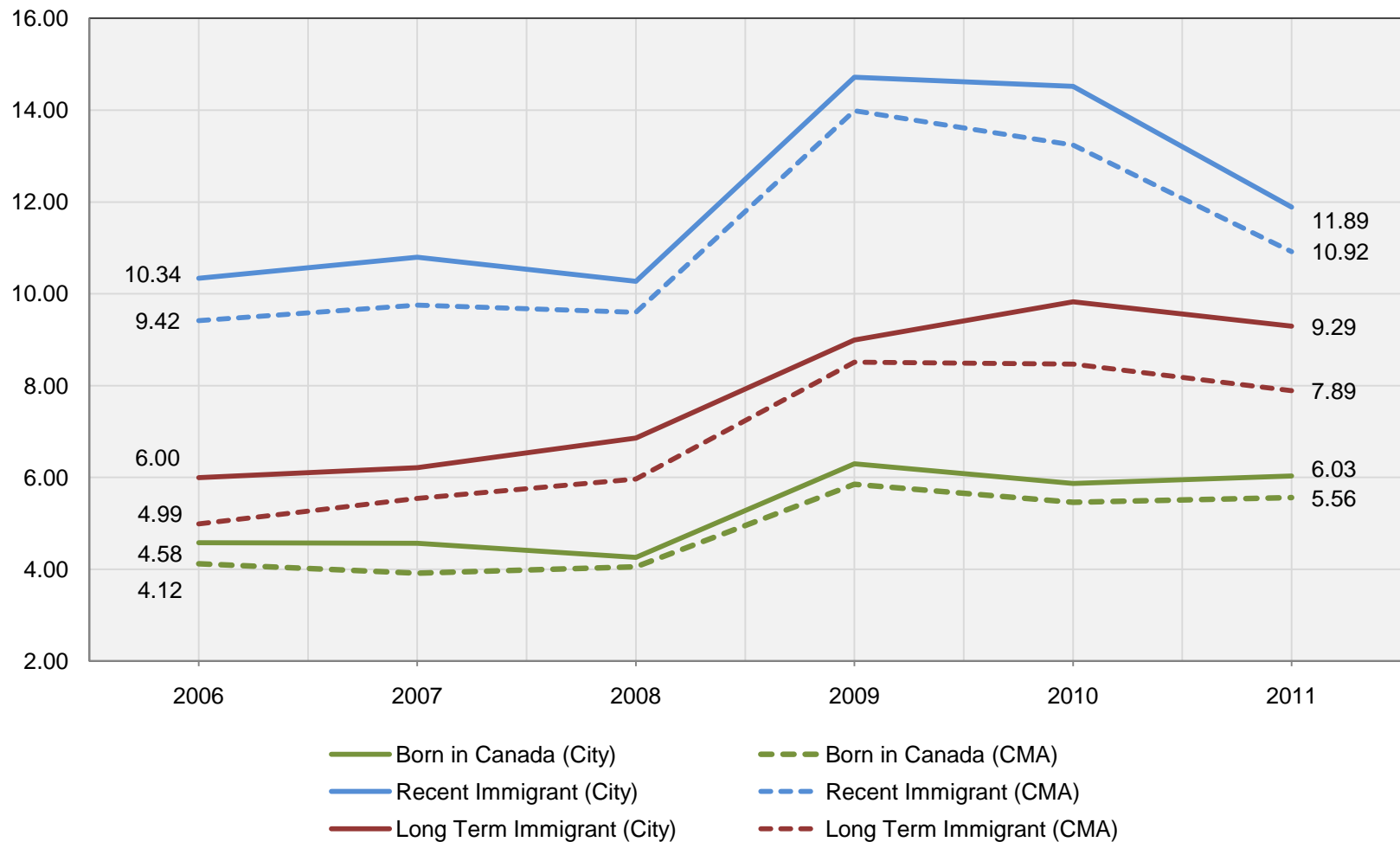


Figure reports percentage under the Statistics Canada Low-Income Cut-off (LICO)

Source: Statistics Canada 2006 Census

# Unemployment Rate of Working Population (25-64)

By Immigrant Status (2006-2011)



Source: Statistics Canada Labour Force Surveys, 2006-2011

# Permanent and Temporary (Non-Visitor) Landings into Toronto (2000-2011)

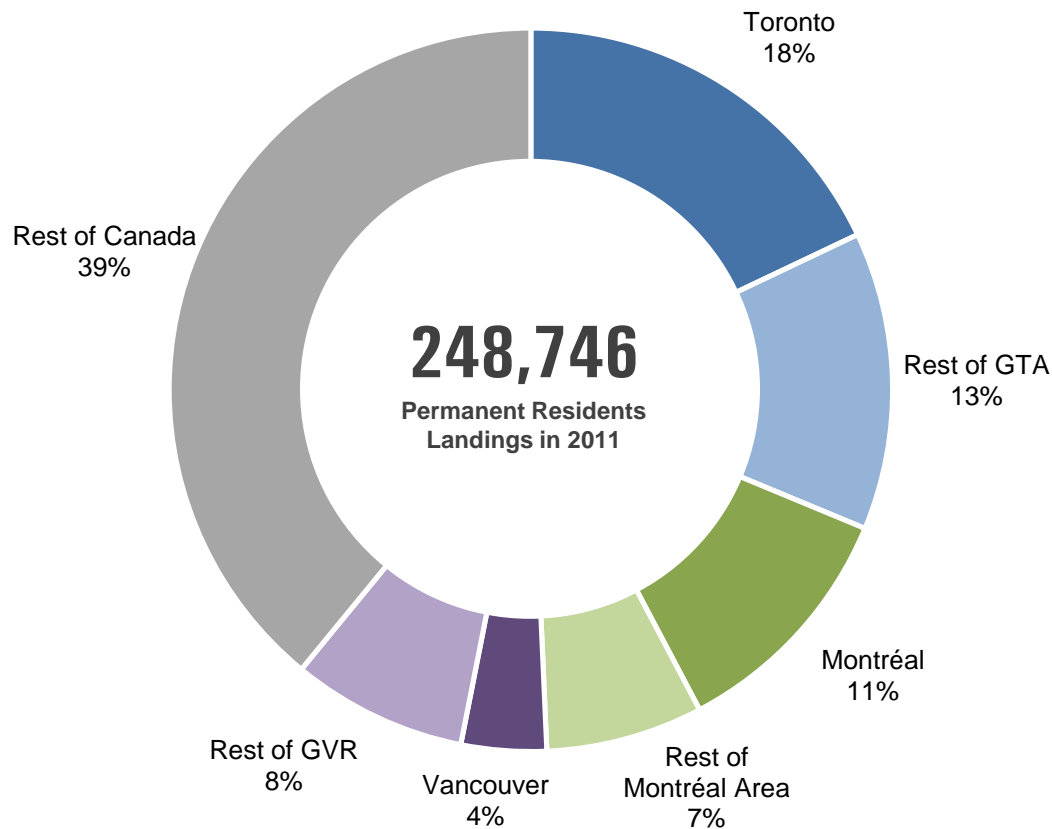


Note that these data are for landings/entries only and do not take into account where individuals move after entering the country.

**Permanent resident data includes family class, economic immigrants, and refugees granted permanent resident status. Temporary entries include students, workers, and refugee claimants who have not yet been granted PR status, but does not include visitors or other temporary resident permit holders.**

Source: Citizenship and Immigration Canada 2012 RDM Extracts

# Permanent Resident Landings by Location (2011)



## PR Landings in Toronto (2011)

**52%**

are women

**50%**

are between the  
ages of 25 and 44

**34%**

have at least a  
Bachelor's degree

**21%**

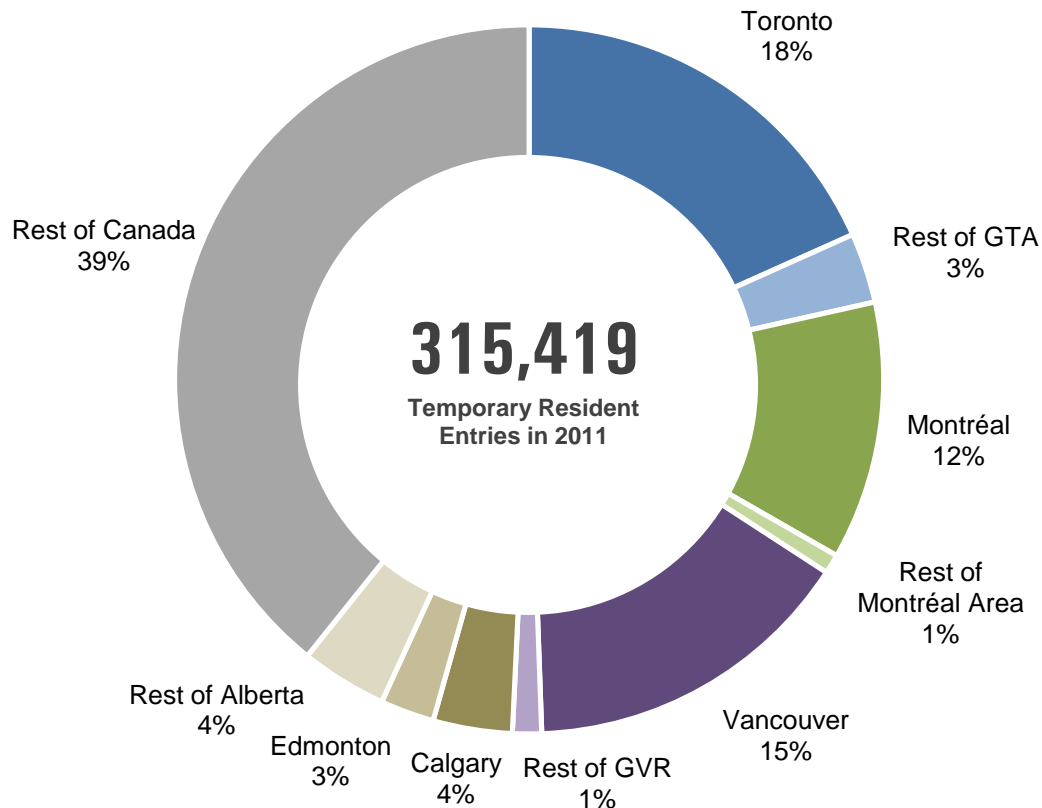
stated intent to be  
employed in skilled,  
managerial, or  
professional work

Permanent resident data includes family class, economic immigrants, and refugees granted permanent resident status.

Source: Citizenship and Immigration Canada 2012 RDM Extracts



# Temporary Resident Entries (Non-Visitors) by Location (2011)



## Temporary Entries in Toronto (2011)

**41%**

are women

**44%**

are between the  
ages of 25 and 44

**44%**

are temporary  
workers

**41%**

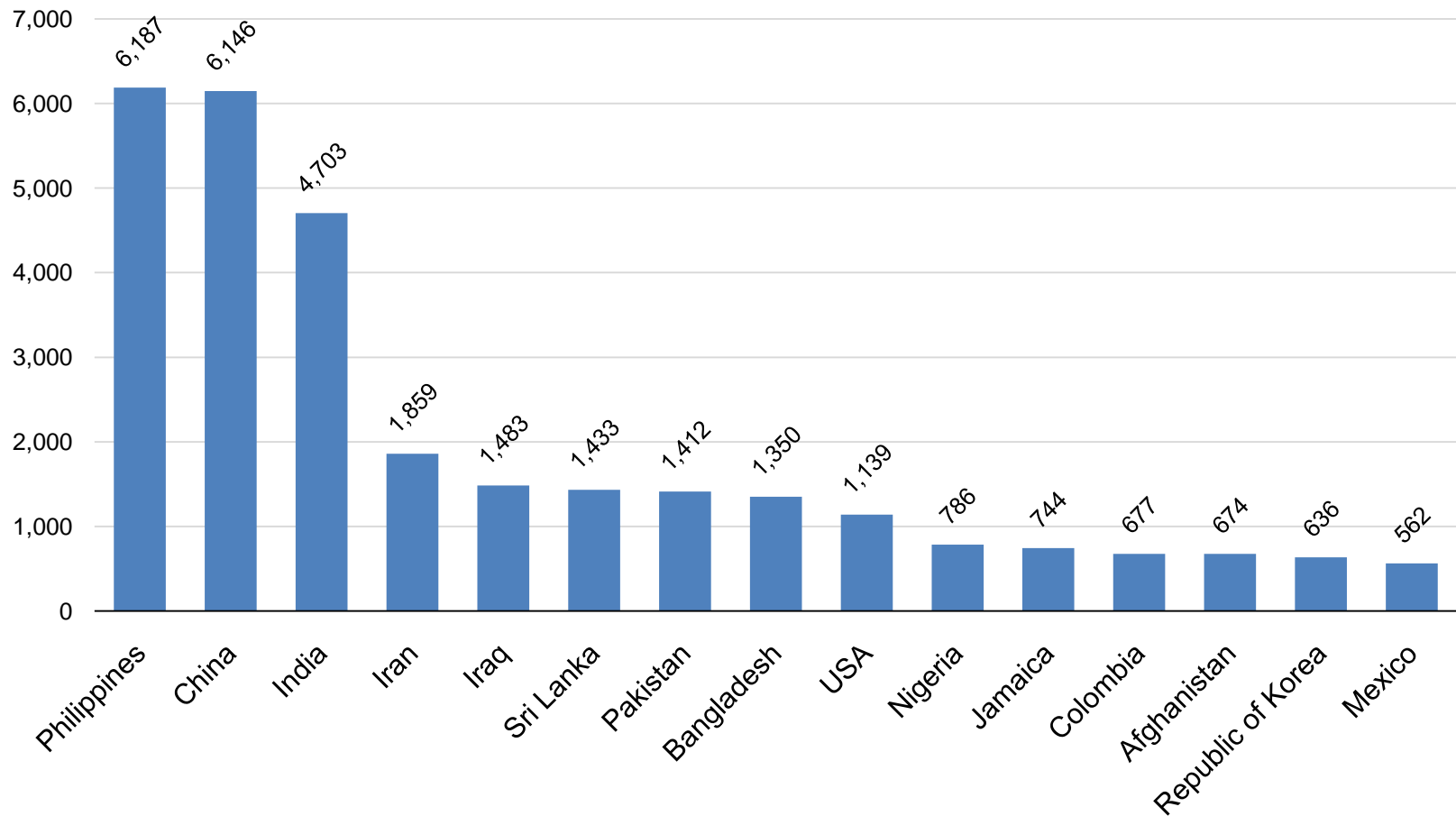
are students

Temporary entries include students, workers, and refugee claimants who have not yet been granted PR status, but does not include visitors or other temporary resident permit holders.

Source: Citizenship and Immigration Canada 2012 RDM Extracts

# Permanent Resident Landings in Toronto by Birth Country

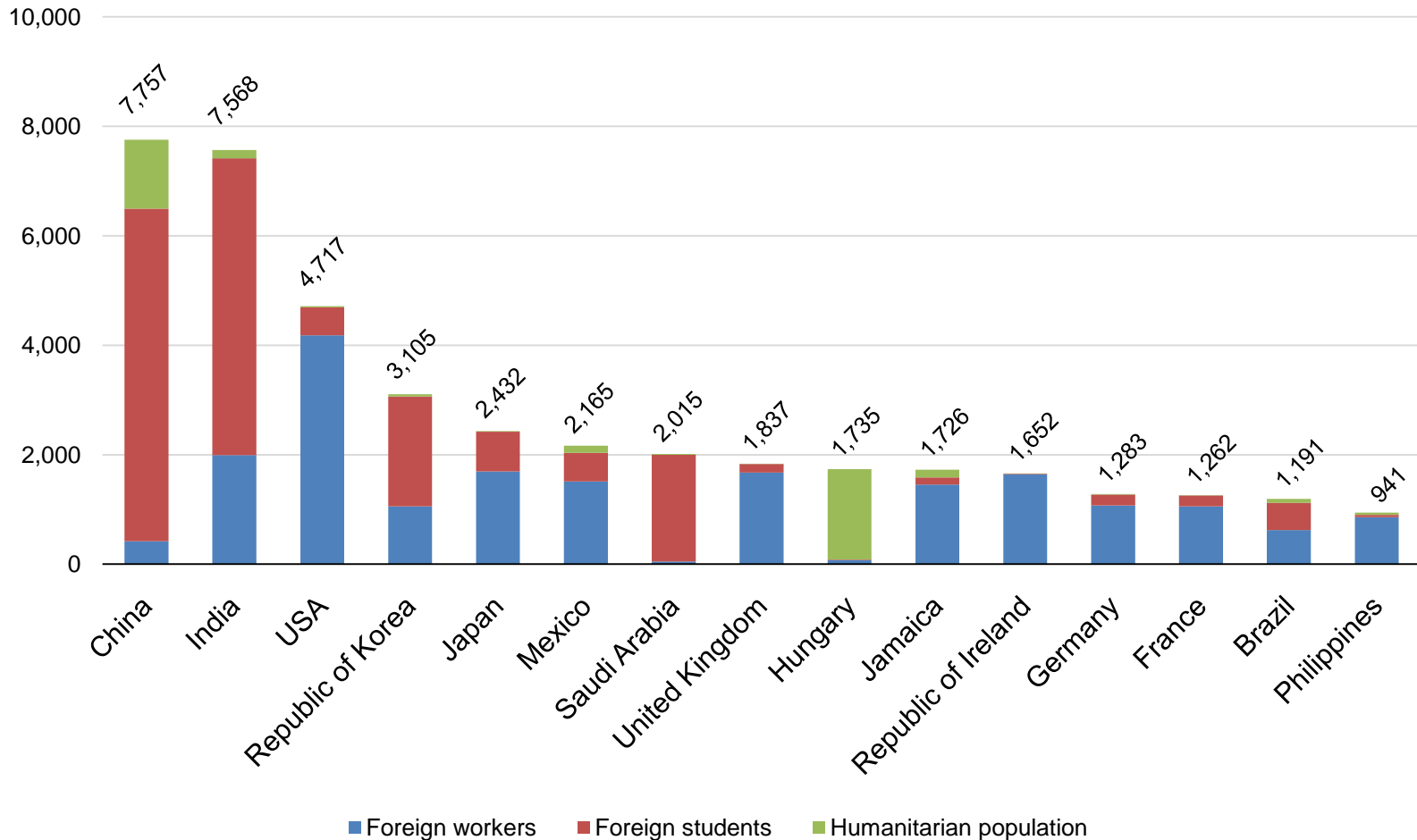
(City of Toronto / 2011)



Total number of landings in the City of Toronto in 2011. Data includes family class, economic immigrants, and refugees granted permanent resident status.  
Source: Citizenship and Immigration Canada 2012 RDM Extracts

# Temporary (Non-Visitor) Entries into Toronto by Birth Country

(City of Toronto / 2011)



Total number of entries in the City of Toronto for 2011. Temporary entries include workers, students, and refugee claimants who have not yet been granted PR status, but does not include visitors or other temporary resident permit holders.

Source: Citizenship and Immigration Canada 2012 RDM Extracts

For more information contact:

City of Toronto  
Social Development, Finance and Administration  
Social Policy, Analysis and Research

Telephone: 416-392-5222

Fax: 416-392-4976

Email: [spar@toronto.ca](mailto:spar@toronto.ca)

