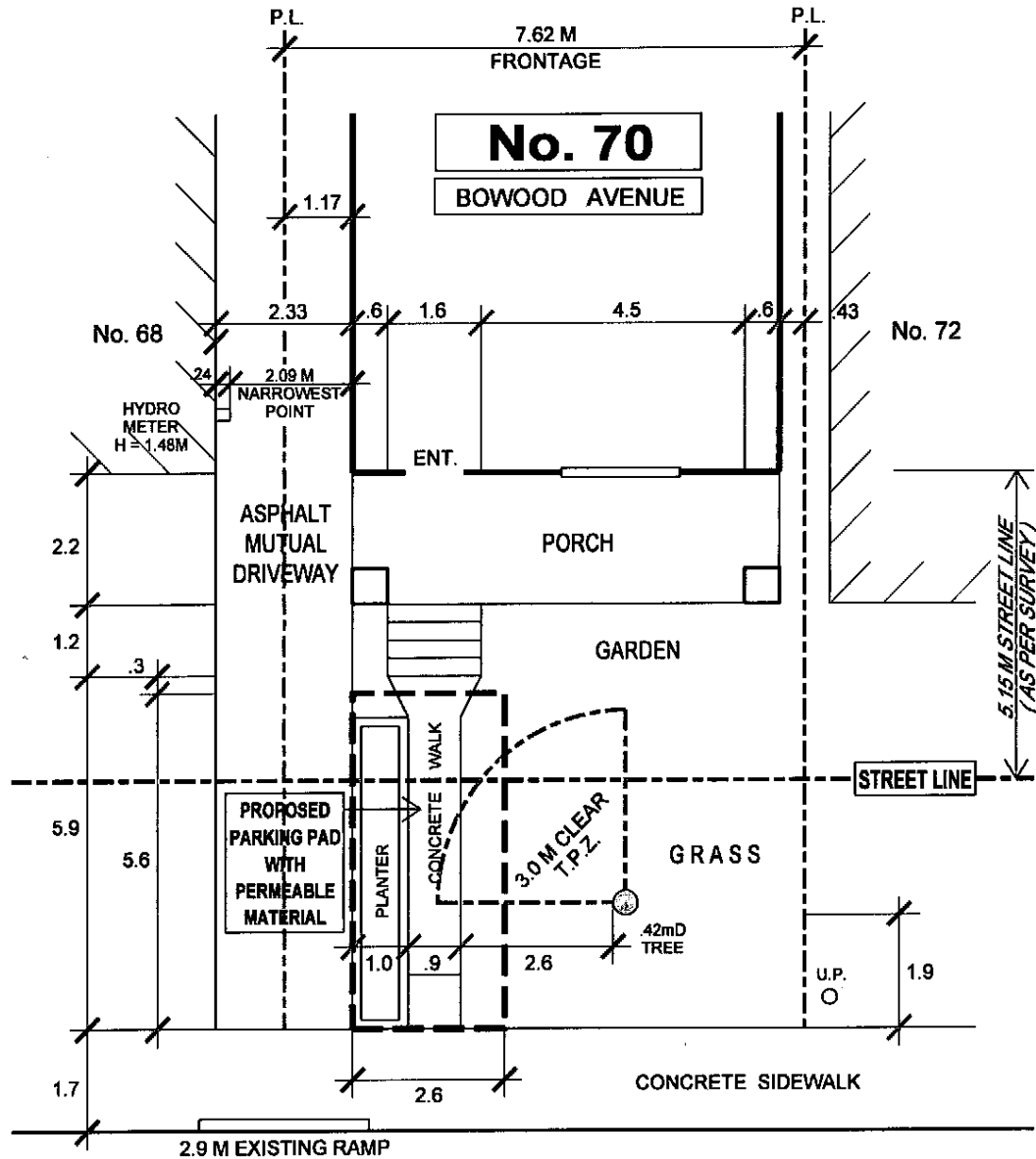


FRONT YARD PARKING APPEAL - 70 BOWOOD AVENUE



BOWOOD AVENUE

TREE CLEARANCE NOT MET

NOTE:
 PERMIT PARKING ON SAME SIDE
 NO LOSS OF PERMIT PARKING SPACE
 DUE TO USE OF EXISTING RAMP



TRANSPORTATION SERVICES DIVISION
 NORTH YORK DISTRICT
 RIGHT OF WAY MANAGEMENT



FRONT YARD PARKING CHAPTER 918 F.Y.P. -

TOTAL PARKING AREA ON STREET ALLOWANCE	10.8 M ²	PRIVATE PROPERTY			STREET ALLOWANCE		
		AREA M ²	%	CODE	AREA M ²	%	CODE
TOTAL AREA		29.9	100		36.8	100	
LANDSCAPED OPEN SPACE		20.0	67	50% min.	21.0	57	50% min.
PAVED AREA		9.9	33	50% max.	15.8	43	50% max.
SOFT LANDSCAPING		16.7	84	75% min.	21.0	100	75% min.

REVISIONS	
Date	By
OCT.30'13	R.A.M.

DRAWN BY: R. MUNSON DATE: SEPT. 27, 2012 SCALE: 1:100