



# Parks Plan

---

## 2013-2017



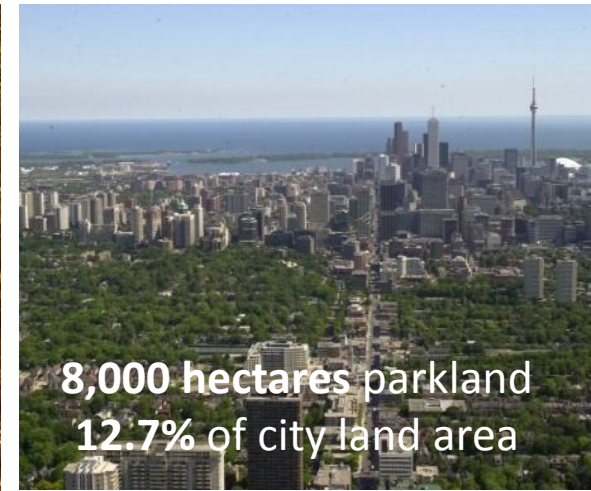
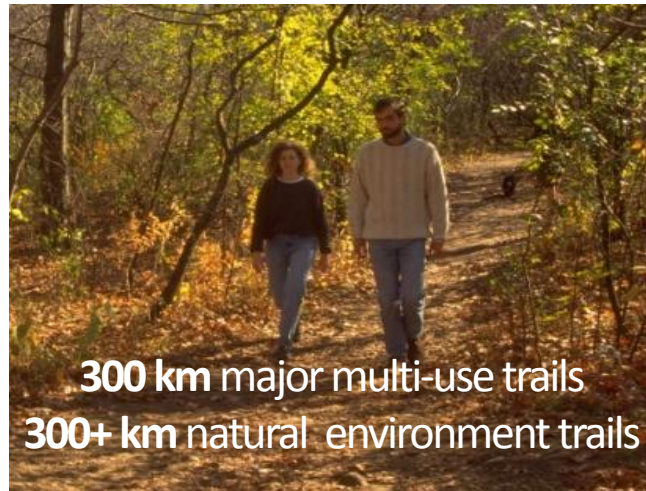
# PARKS PLAN: 5 Year Vision

welcoming, well-maintained, safe and sustainable parks

---

- sets priorities for the development, management and operation of parkland
- will result in noticeable improvements to parks across the city

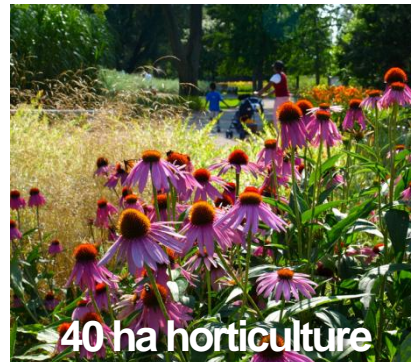
# TORONTO'S PARKS SYSTEM





# parks system snapshot

2012





# BENEFITS OF PARKS



# PARKS PLAN guiding principles

- Parks & Trails as City Infrastructure
- Equitable Access for All Residents
- Nature in the City
- Environmental Goals & Practices
- Placemaking
- Supporting a Diversity of Uses
- Community Engagement and Partnerships



# BROAD ISSUES FACING THE PARKS SYSTEM

- Growing population on a fixed land base
- Changing ideas and expectations about parks
- Increasing requests and proposals for park use
- High demand to support community involvement
- Need to make parks more accessible for people with disabilities
- Impact of increasing recreational use of natural areas
- Climate change impacts



# BROAD ISSUES FACING THE PARKS SYSTEM

recreational pressures on parkland - examples





# BROAD ISSUES FACING THE PARKS SYSTEM

extreme weather e.g. Edwards Gardens (Wilket Creek)



# BROAD ISSUES FACING THE PARKS SYSTEM

extreme weather e.g. Marie Curtis Park



before



after

April 2013 storm damage

# PARKS PLAN consultation

4,000 participants

3,754 surveys, 9 meetings and 7 focus groups

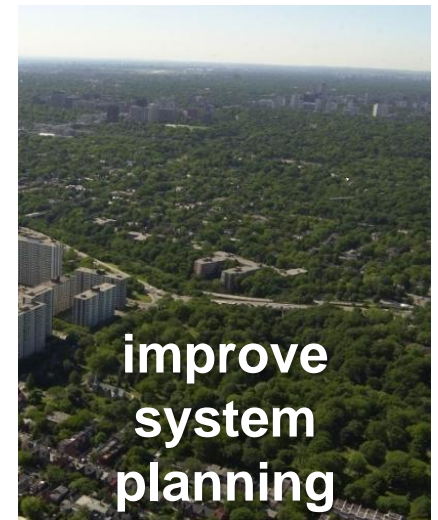
14,708 individual comments and survey data

**The consultation results show that Torontonians value their parks**

- Nature in the city is important
- Vital city infrastructure
- Important parts of their neighbourhood
- Important city attraction



# PARKS PLAN THEMES



# COMMUNICATE & CONNECT WITH USERS

## 1. Improve communications and outreach

The image shows a draft concept model of the City of Toronto's Parks, Forestry & Recreation website. The header includes the City of Toronto logo and navigation links: HOME, CONTACT US, HOW DO I...?, and a search bar. Below the header is a navigation bar with categories: LIVING IN TORONTO, DOING BUSINESS, VISITING TORONTO, and ACCESSING CITY HALL. The main content area is titled "Parks, Forestry & Recreation" and includes links for Community Engagement, Partnerships, Jobs, and Contacts. The featured park is "High Park".

**High Park**

The park, over one-third of which remains in a natural state, is home to many species of wildlife, including birds, fish and animals. Recognized as one of the most significant natural sites within the City of Toronto, the park contains an outstanding concentration of rare plant species. The park offers many popular attractions as well as activities for visitors to enjoy. [More info](#)

1873 Bloor St W M8Z 3R3  
Ward: 13  
District: Etobicoke York  
Near: Keele & Bloor  
**TTC Information:** Travel to High Park Station. Exit the East Side of High Park Station and continue east to High Park Ave. Walk south to Bloor St. West and cross over the intersection at the lights into the park.

[MAP IT](#)

**Registered Programs**

Facility	Classification	Permit Office
Ball Diamonds 3	A, B, C	416 387- 5684
Clubhouses 3		
Dogs Off-Leash Area 1		
Multipurpose Room 1	C	416 389 - 6789
Outdoor Pool 1	A	416 398 - 8905
Outdoor Rinks 2		416 389 - 4567
Playgrounds 4		
Splash Pad		
Sport Fields 2	B	416 785 9875
Stage		
Wading Pool		

**Legend**

- Picnic Shelter
- Picnic Area
- Baseball
- Outdoor Pool
- Playground
- Skating Rink
- Soccer
- Tennis
- Wading Pool
- Washrooms
- Childrens Garden

The map shows the location of High Park, bounded by Bloor St W to the north, High Park Ave to the east, and the Humber River to the south. Key landmarks include the Indian Valley Creek, the Humber River, and the High Park Station. The map also shows the locations of various facilities such as picnic shelters, picnic areas, baseball fields, outdoor pools, playgrounds, skating rinks, soccer fields, tennis courts, wading pools, washrooms, and children's gardens.

Draft concept model: parks listing webpage

## People, Dogs & Parks

Promoting Responsible  
Dog Ownership





# COMMUNICATE & CONNECT WITH USERS

## 2. Increase opportunities for resident, group and stakeholder involvement

- Urban park ranger program to facilitate community involvement in parks
- Engagement and volunteer management tools
- Expanded partnerships





# COMMUNICATE & CONNECT WITH USERS

## 3. Improve the permitting system to enhance park use

- Improve on-line information and services
- Permitting system review
- Improved data collection



# PRESERVE & PROMOTE NATURE

## 4. Improve the management of natural areas

- Establish a program to manage Environmentally Significant Areas (ESAs)
- Staff training
- Protect parkland from over-use



# PRESERVE & PROMOTE NATURE

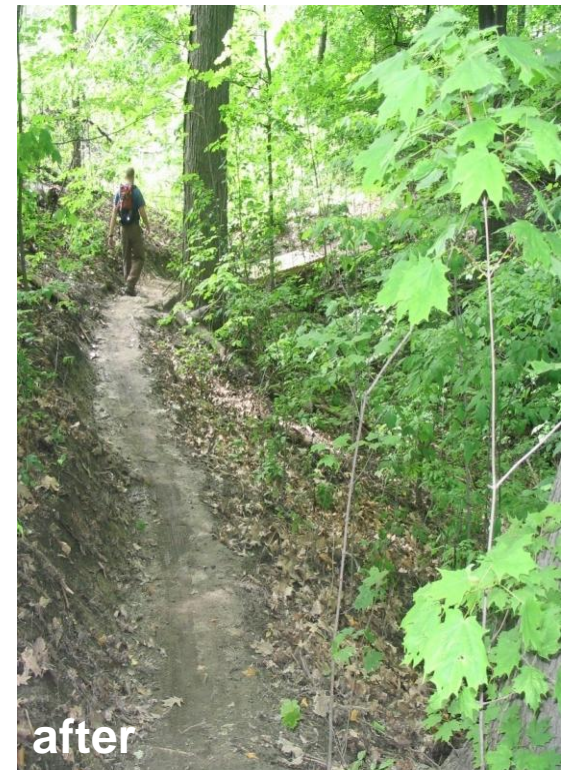
## 5. Improve natural environment trails

- Trail planning & building
- Trail maintenance
- Stewardship & engagement



before

Crother's Woods



after



# PRESERVE & PROMOTE NATURE

## 6. Integrate emerging trends and technologies into parks operations

- Continue to improve water, energy & fuel efficiency
- Explore and use new practices and technologies



Electric Golf Carts



Children's Teaching Kitchen

# MAINTAIN QUALITY PARKS

## 7. Advance the quality and consistency of parks and trails

- Enhance and automate park inspections
- Improve by-law enforcement
- High quality design





# MAINTAIN QUALITY PARKS

promoting design excellence e.g. Joel Weeks Park  
winner of 2013 Canadian Society of Landscape Architects Regional Merit Award





# MAINTAIN QUALITY PARKS

## 8. Improve park spaces

- Improve basic park amenities
- Create social gathering spaces as focal points
- Increase summer maintenance in high use parks



# MAINTAIN QUALITY PARKS

## social gathering spaces – examples





# MAINTAIN QUALITY PARKS

## 9. Demonstrate, educate, and inspire through horticulture and urban agriculture

- High impact horticulture
- Community involvement through horticulture
- Augment urban agriculture





# MAINTAIN QUALITY PARKS

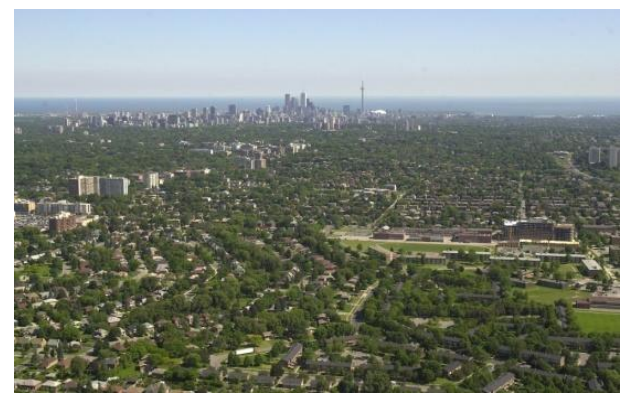
high impact horticulture



Downsview Memorial Parkette

# IMPROVE SYSTEM PLANNING

## 10. Develop a plan to guide facility provision and land acquisition

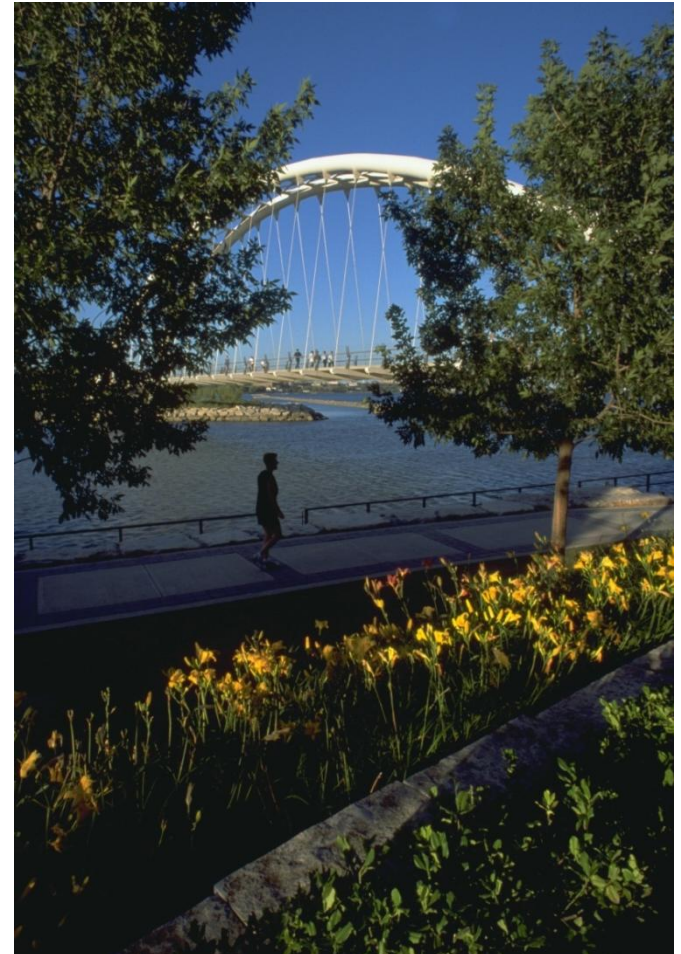




# IMPROVE SYSTEM PLANNING

## 11. Develop tools to guide and enhance the use of parkland

- Implement the park classification system
- Develop tools to support the appropriate use of parks and trails
- Improve and coordinate trail planning





# PARKS CLASSIFICATION SYSTEM

the five parks types are:

- Parkette
- Neighbourhood Park
- Community Park
- District Park
- City Park

classification:

- Provides a hierarchy of park 'types' with associated roles and characteristics
- Is a tool for parks planning, management, and operations
- Promotes a shared understanding of the park system

# IMPROVE SYSTEM PLANNING

## 12. Continue to increase accessibility

- Involve disability groups in developing design standards for park amenities
- Ensure that parks and trails meet or exceed provincial accessibility standards



# IMPLEMENTATION & NEXT STEPS

- Council approval
- begin implementation of initiatives not requiring funding
- report through 2014 budget process with financial requirements for approval
- implement additional initiatives based on approved funding



<i>Full implementation will rely on investment in:</i>	<i>Annual expenditures by 2018</i>	<i>Key results over 5 years will include:</i>
urban park rangers	1.54M operating	<ul style="list-style-type: none"> <li>• increased public involvement in parks</li> <li>• more vibrant parks and neighbourhoods</li> <li>• 'one stop' point of contact</li> </ul>
amenities social gathering spaces	\$5.5M capital	<ul style="list-style-type: none"> <li>• improved seating and amenities</li> <li>• 120 – 150 social gathering spaces</li> </ul>
natural environment trails	\$1.41M operating \$0.25M capital	<ul style="list-style-type: none"> <li>• 250km restored, sustainable trails</li> <li>• improved, healthier natural areas</li> </ul>
horticulture urban agriculture	1.89M operating	<ul style="list-style-type: none"> <li>• 220 rejuvenated flower/shrub beds</li> <li>• community horticulture program</li> <li>• additional community and allotment gardens</li> </ul>
maintenance	\$0.58M operating	<ul style="list-style-type: none"> <li>• cleaner, greener parks</li> </ul>

# THE PARKS PLAN WILL...

- Connect people and communities with parks and trails
- Advance greening and environmental sustainability
- Improve the quality of parks and trails across the city
- Build a stronger park system that is a legacy for Toronto

