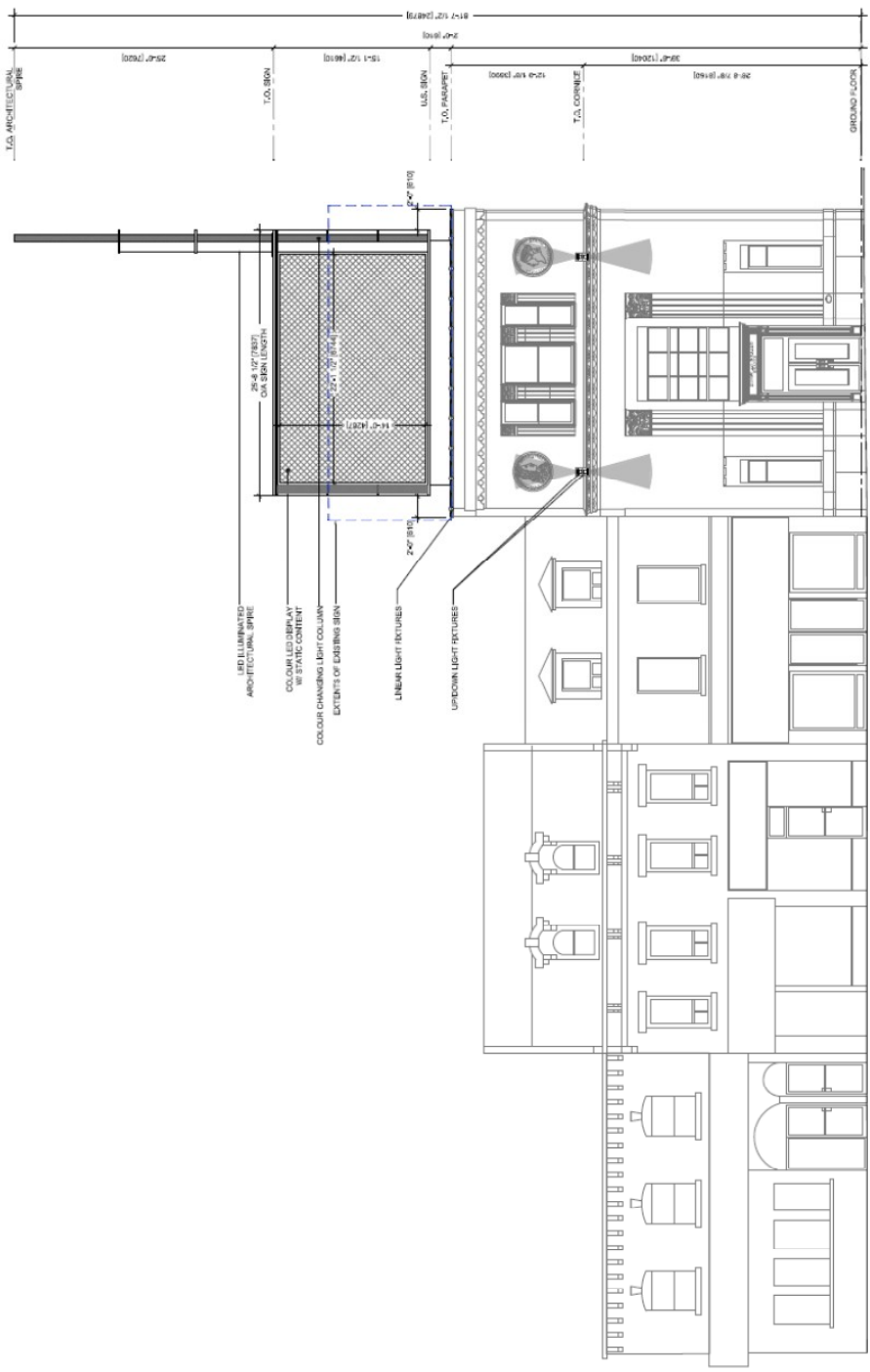


APPENDIX B: APPLICANT'S SUBMISSION MATERIALS



LED ILLUMINATED ARCHITECTURAL SPIRE

COLOUR LED DISPLAY W/ STATIC CONTENT

COLOUR CHANGING LIGHT COLUMN

EXTENTS OF EXISTING SIGN

LINEAL LIGHT FIXTURES

UPDOWN LIGHT FIXTURES

25'-4 1/2" (7837) OX SIGN LENGTH

2'-0" (610) SIGN

2'-0" (610)

2'-0" (610)

TO ARCHITECTURAL SPIRE

15'-10 1/2"

TO SIGN

15'-10 1/2"

TO PARAPET

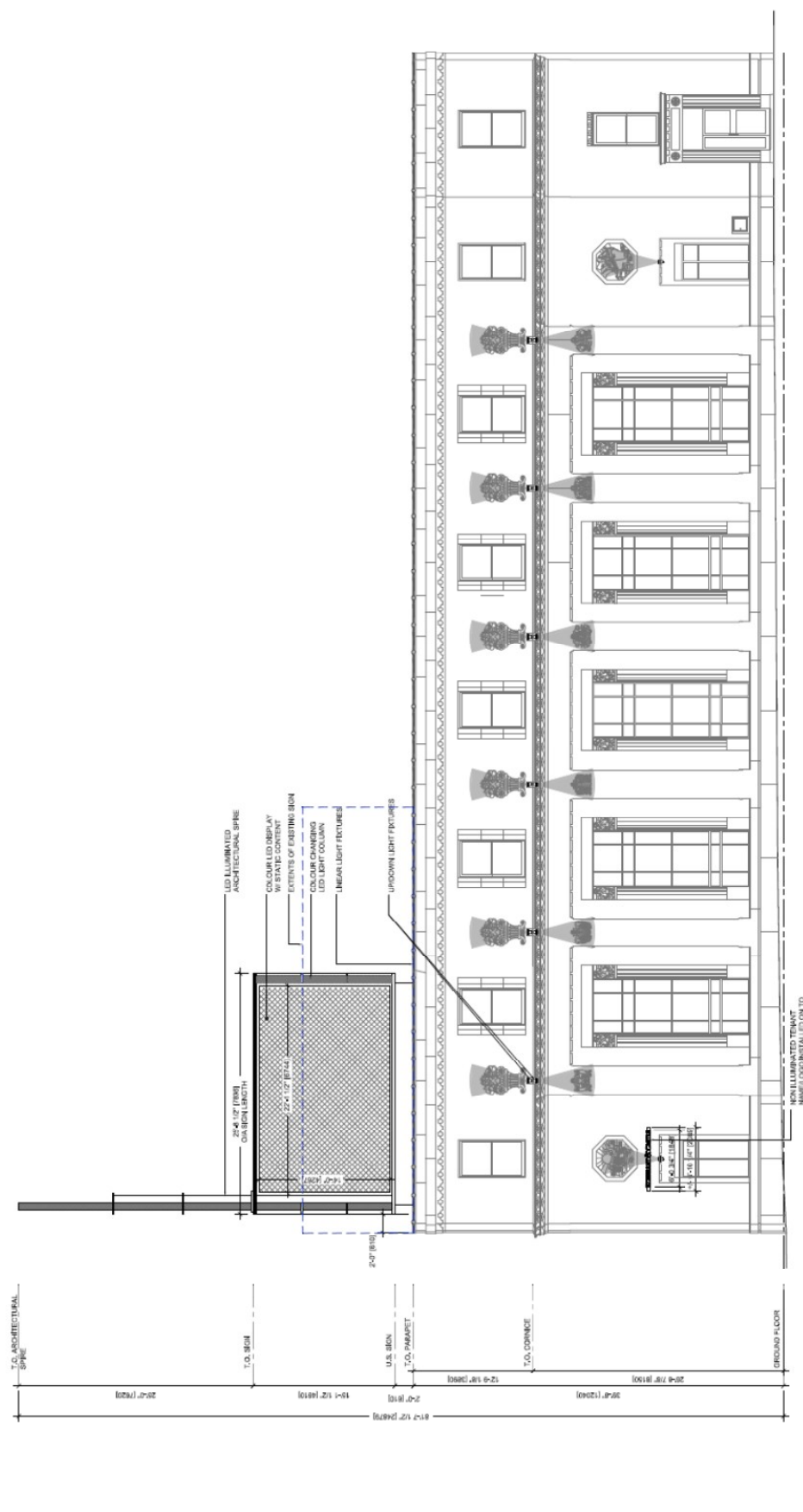
15'-10 1/2"

TO CORNICE

15'-10 1/2"

GROUND FLOOR

15'-10 1/2"



T.O. ARCHITECTURAL SPINE

20'-7 1/2" (6287)

T.O. SIGN

19'-1 1/2" (5812)

U.S. SIGN

2'-0" (610)

T.O. PARAPET

12'-9 1/4" (3944)

T.O. CORNICE

20'-0" (6100)

GROUND FLOOR

20'-9 7/8" (6340)

LED ILLUMINATED ARCHITECTURAL SPINE

CONCURE LED DISPLAY W/ STATIC CONTENT

EXTENTS OF EXISTING SIGN

LED SIGNAGE AND LED LIGHT COLUMN

LINEAR LIGHT FIXTURES

UPDOWN LIGHT FIXTURES

NON ILLUMINATED TENANT NAME LOGO INSTALLED ON TO

1'-4 1/2" (418)

