

Conversion Request – 855 Oxford Street

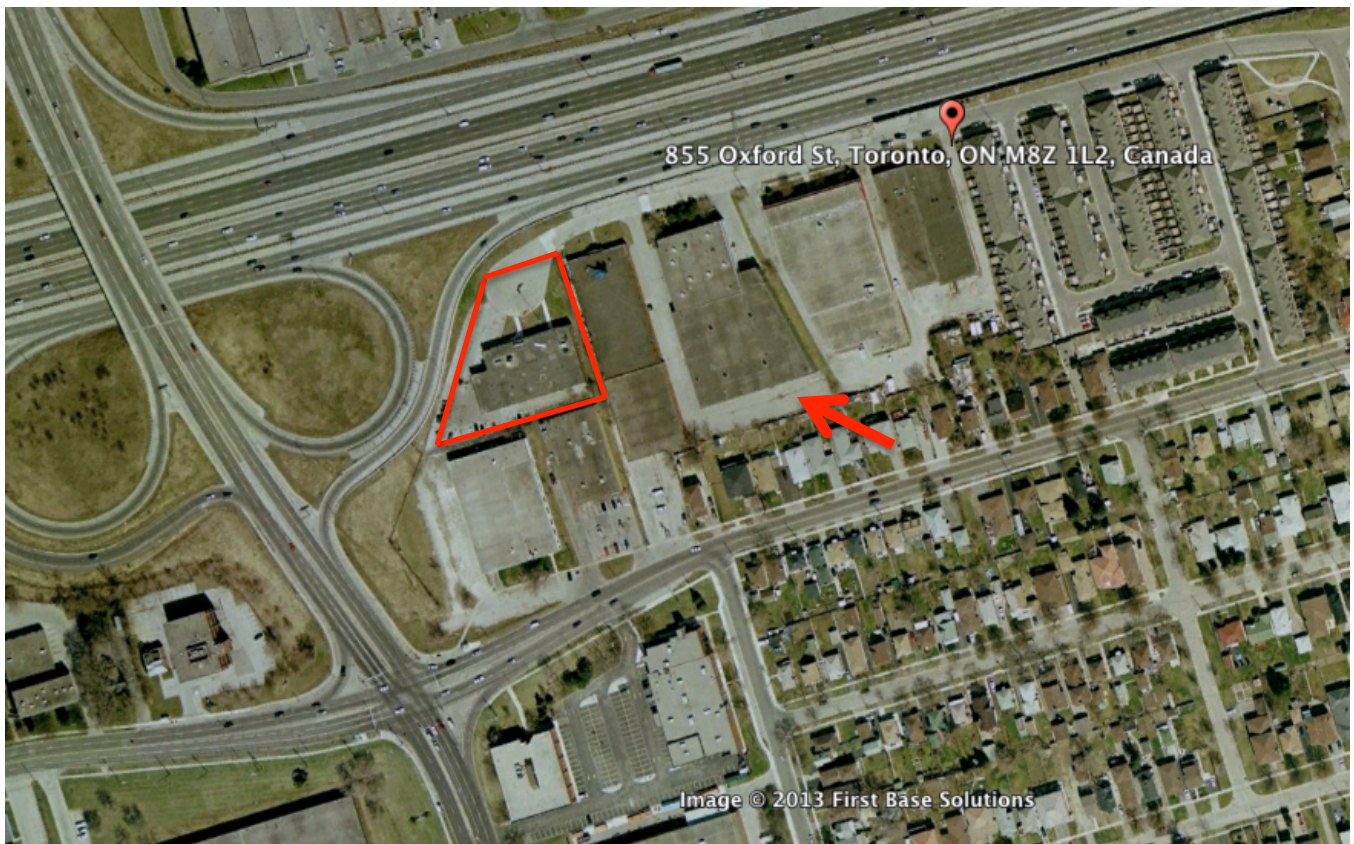


Figure 1: 855 Oxford Street circa December 2004 – note the adjacent cluster of employment uses



Figure 2: 855 Oxford Street today - adjacent use is now residential townhouse development

Conversion Request – 855 Oxford Street



Figure 3: View of access road to 855 Oxford Street

- only access to property is through a residential townhouse neighbourhood
- installation of noise wall adjacent to townhouse development impedes visibility of 855 Oxford Street from the Gardiner Expressway



Figure 4: View of 855 Oxford Street

- property is integrated within residential townhouse neighbourhood