

Indicator Highlights

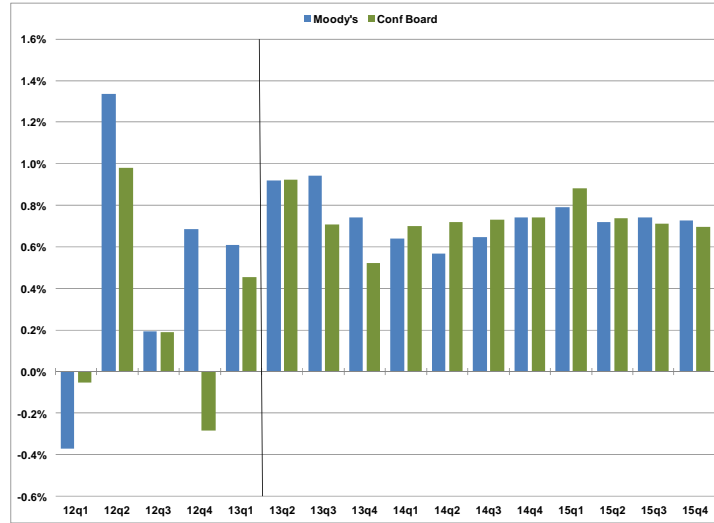
Economic Development Committee

	Geography	Same Month Last Year	Previous Month	Most Recent Month	Status
Unemployment Rate	Toronto	9.4%	9.3%	9.7%	◆
December 2013 (3 Month Average SA)	Canada	7.2%	6.9%	7.0%	◆
Participation Rate	Toronto	67.1%	67.1%	66.7%	■
December 2013 (3 Month Average SA)	Canada	66.8%	66.4%	66.4%	■
Total Employed Residents	Toronto	1,307.3	1,309.9	1,301.3	◆
December 2013 (3 Month Average SA)	Canada	17,628.0	17,796.7	17,793.0	◆
Total Value of Building Permits	Toronto	\$510 million	\$751 million	\$790 million	●
November 2013 (3 Month Average)	Canada	\$7.1billion	\$7.2 billion	\$7.2 billion	●
High Rise Buildings Under Construction	Toronto	185	164	113	◆
December 2013					
Office Vacancy Rate	Toronto	5.4%	5.3%	5.7%	◆
Q3 2013					
Average House Price	Toronto	\$517,866	\$593,807	\$590,366	●
November 2013	Canada	\$356,293	\$391,820	\$391,085	●
Business Bankruptcies	Toronto CMA	151	175	131	●
Q3 2013	Canada	1,009	1,123	986	●
Employment Insurance Recipients	Toronto	22,810	30,090	21,460	●
September 2013	Canada	342,480	461,320	313,510	●
Consumer Price Index	Toronto	122.0	123.7	123.6	●
November 2013 (2002=100)	Canada	121.9	123.0	123.0	●
Retail Sales	Toronto CMA	\$5.6 billion	\$5.9 billion	\$5.9 billion	●
October 2013 (3 Month Average SA)	Canada	\$39.4billion	\$40.5billion	\$40.6 billion	●

◆ Negative
 ■ Caution
 ● Positive

Note: Top symbol compares how Toronto's position has changed; bottom symbol compares Toronto's performance to Canada

Real GDP Growth Toronto CMA



Source: Conference Board of Canada (December 6, 2013), Moody's Forecast (November 26, 2013)



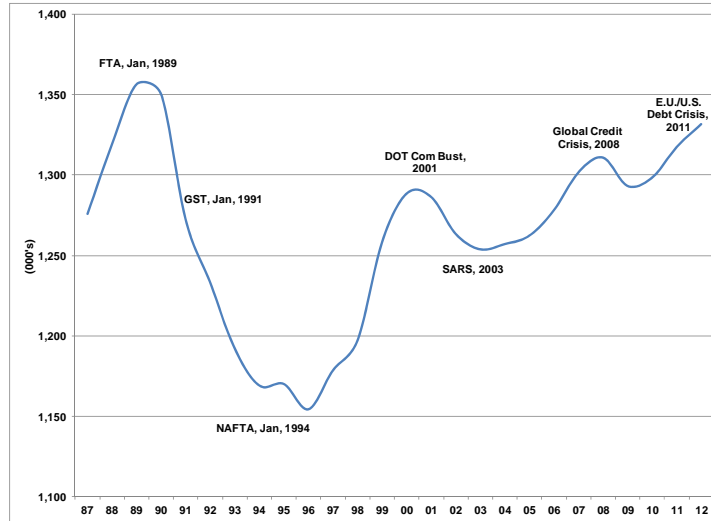
Percent Change in GDP Toronto CMA

	Moody's	Conference Board
12q1	-0.37%	-0.05%
12q2	1.34%	0.98%
12q3	0.19%	0.19%
12q4	0.69%	-0.29%
13q1	0.61%	0.45%
13q2	0.92%	0.92%
13q3	0.94%	0.71%
13q4	0.74%	0.52%
14q1	0.64%	0.70%
14q2	0.57%	0.72%
14q3	0.65%	0.73%
14q4	0.74%	0.74%
15q1	0.79%	0.88%
15q2	0.72%	0.74%
15q3	0.74%	0.71%
15q4	0.73%	0.70%

Source: Conference Board of Canada (December 6, 2013), Moody's Forecast (November 26, 2013)



Jobs in the City of Toronto Establishment Survey



Source: City Planning Division, Policy and Research Section



Jobs in the City of Toronto Establishment Survey

Year	Total Employment (000's)	Y-Y Change
1987	1,275.8	
1988	1,319.3	43.5
1989	1,356.5	37.2
1990	1,350.1	-6.4
1991	1,272.0	-78.1
1992	1,232.9	-39.1
1993	1,191.8	-41.1
1994	1,168.9	-22.9
1995	1,169.9	1.0
1996	1,154.2	-15.7
1997	1,178.5	24.3
1998	1,197.0	18.5
1999	1,258.2	61.2
2000	1,288.4	30.2
2001	1,286.3	-2.1
2002	1,263.3	-23.0
2003	1,253.7	-9.6
2004	1,257.0	3.3
2005	1,262.2	5.2
2006	1,278.0	15.8
2007	1,301.6	23.6
2008	1,310.8	9.2
2009	1,293.2	-17.6
2010	1,298.3	5.1
2011	1,317.3	19.0
2012	1,331.6	14.3

Source: City Planning Division, Policy and Research Section



Business Climate 2012/13 Toronto Ranks Well Internationally

Reputation Institute – Reputable Cities – 2013
Toronto ranks **2nd of 100** global cities for reputation

Aon Hewitt – People Risk Index - 2013
Toronto ranks **3rd of 138** global metropolitan areas for lowest risk

PricewaterhouseCoopers - Cities of Opportunity - 2012
Toronto ranks **3rd of 27** cities globally in current social and economic performance

Economist Intelligence Unit – Liveability Ranking - 2013
Toronto ranks **4th of 140** cities for liveability

KPMG's Comparative Alternatives Study – Business Location Costs - 2012
Toronto ranks **5th of 44** global cities for attractiveness for inward investment

Colliers International – Office Markets Lowest Vacancy Rate - 2012
Toronto ranks **7th of 75** in office markets in North America



7

Business Climate 2012/13 Toronto Ranks Well Internationally

fDI Magazine – American Cities of the Future - 2013
Toronto ranks **2nd of 10** North American cities for attractiveness for inward investment

Economist Intelligence Unit and CitiGroup – City Competitiveness Index- 2013
Toronto ranks **10th of 120** cities for global competitiveness

QS World University Ranking – University Ranking - 2013
University of Toronto ranks **17th of 833** global universities

CIBC - Canadian Cities: An Economic Snapshot - 2012
Toronto ranks **1st of 25** Canadian CMAs for economic performance

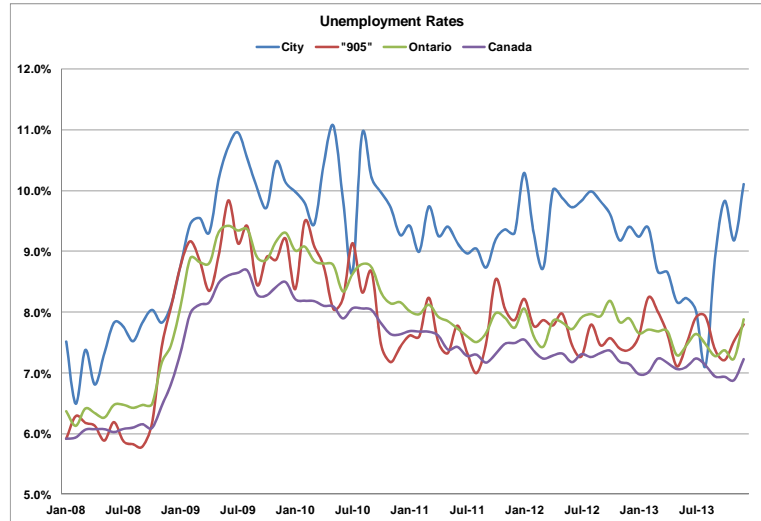
Intelligent Community Forum - Top 7 Intelligent Communities - 2013
Toronto ranks **7th of 7** global cities for best practices in creating competitive local economies

Toronto Board of Trade – Scorecard on Prosperity - 2013
Toronto ranks **6th of 24** global metropolitan regions



8

Unemployment Rate



Source : Statistics Canada – Labour Force Survey – Seasonally Adjusted Monthly Data
 *City of Toronto Series is Seasonally Adjusted by City of Toronto



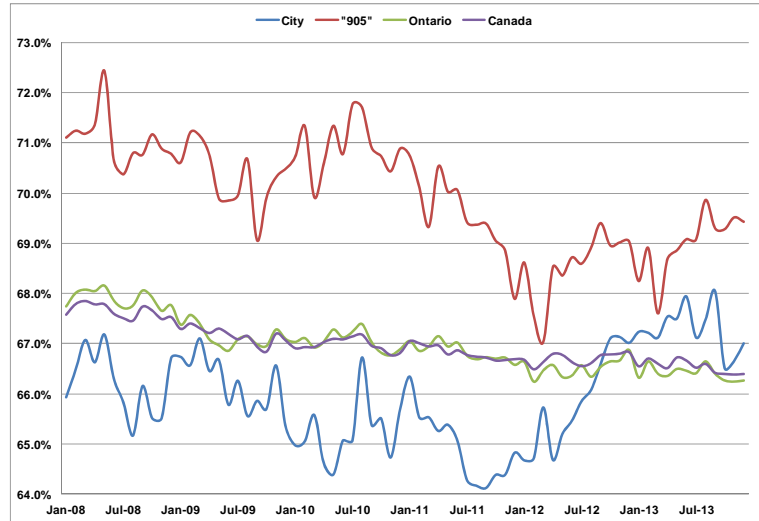
Unemployment Rate

	City	"905"	Ontario	Canada
Dec-12	9.4%	7.4%	7.9%	7.1%
Jan-13	9.2%	7.6%	7.7%	7.0%
Feb-13	9.4%	8.2%	7.7%	7.0%
Mar-13	8.7%	8.0%	7.7%	7.2%
Apr-13	8.7%	7.6%	7.7%	7.2%
May-13	8.2%	7.1%	7.3%	7.1%
Jun-13	8.2%	7.5%	7.5%	7.1%
Jul-13	8.0%	7.9%	7.6%	7.2%
Aug-13	7.1%	7.9%	7.5%	7.1%
Sep-13	8.9%	7.4%	7.3%	6.9%
Oct-13	9.8%	7.2%	7.4%	6.9%
Nov-13	9.2%	7.5%	7.2%	6.9%
Dec-13	10.1%	7.8%	7.9%	7.2%

Source : Statistics Canada – Labour Force Survey – Seasonally Adjusted Monthly Data
 *City of Toronto Series is Seasonally Adjusted by City of Toronto



Participation Rate



Source : Statistics Canada – Labour Force Survey – Seasonally Adjusted Monthly Data
 *City of Toronto Series is Seasonally Adjusted by City of Toronto



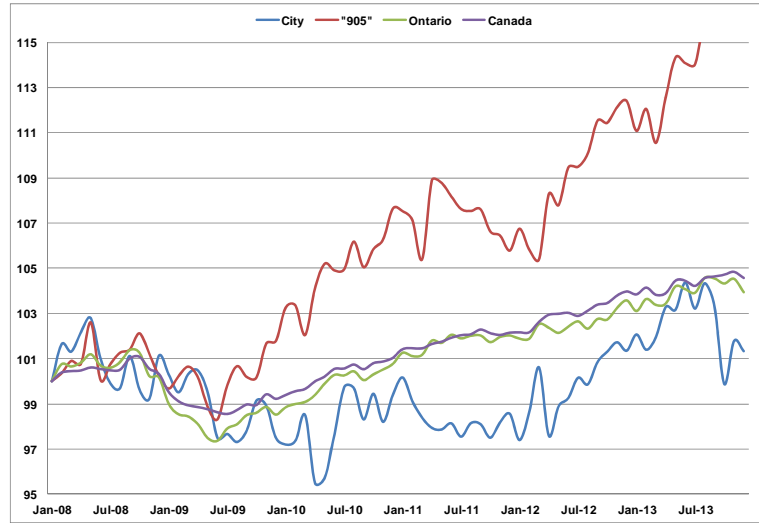
Participation Rate

	City	"905"	Ontario	Canada
Dec-12	67.0%	69.0%	66.9%	66.8%
Jan-13	67.2%	68.3%	66.3%	66.6%
Feb-13	67.2%	68.9%	66.6%	66.7%
Mar-13	67.1%	67.6%	66.4%	66.6%
Apr-13	67.5%	68.7%	66.4%	66.5%
May-13	67.5%	68.9%	66.5%	66.7%
Jun-13	67.9%	69.1%	66.5%	66.7%
Jul-13	67.1%	69.1%	66.4%	66.5%
Aug-13	67.5%	69.9%	66.6%	66.6%
Sep-13	68.0%	69.3%	66.4%	66.4%
Oct-13	66.5%	69.3%	66.3%	66.4%
Nov-13	66.7%	69.5%	66.2%	66.4%
Dec-13	67.0%	69.4%	66.3%	66.4%

Source : Statistics Canada – Labour Force Survey – Seasonally Adjusted Monthly Data
 *City of Toronto Series is Seasonally Adjusted by City of Toronto



Total Employed Residents (Jan08=100)



Source : Statistics Canada – Labour Force Survey – Seasonally Adjusted Monthly Data
*City of Toronto Series is Seasonally Adjusted by City of Toronto



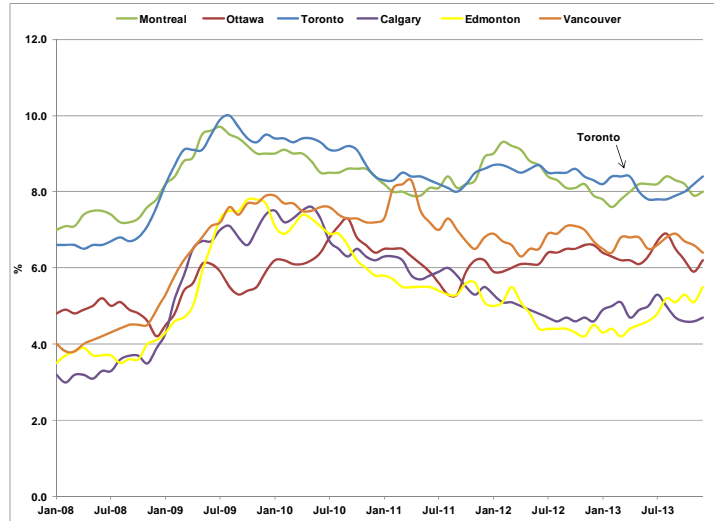
Total Employed Residents

	City	"905"	Ontario	Canada
Dec-12	1,306	1,774	6,854	17,668
Jan-13	1,315	1,753	6,823	17,646
Feb-13	1,306	1,768	6,858	17,696
Mar-13	1,314	1,745	6,841	17,642
Apr-13	1,331	1,777	6,845	17,654
May-13	1,329	1,804	6,895	17,749
Jun-13	1,345	1,800	6,887	17,749
Jul-13	1,330	1,799	6,877	17,710
Aug-13	1,344	1,830	6,920	17,769
Sep-13	1,331	1,831	6,918	17,781
Oct-13	1,287	1,839	6,904	17,794
Nov-13	1,311	1,831	6,918	17,816
Dec-13	1,306	1,827	6,878	17,770

Source : Statistics Canada – Labour Force Survey – Seasonally Adjusted Monthly Data
*City of Toronto Series is Seasonally Adjusted by City of Toronto



Unemployment Rate Major Canadian Urban Regions



Source : Statistics Canada – Labour Force Survey
Seasonally Adjusted 3 Month Moving Averages



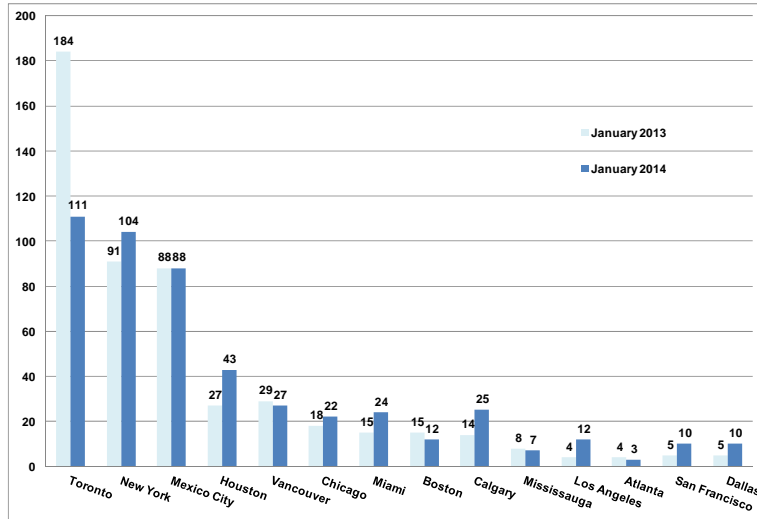
Unemployment Rate Major Canadian Urban Regions

	Montreal	Ottawa	Toronto	Calgary	Edmonton	Vancouver
Dec-12	7.9%	6.6%	8.3%	4.6%	4.5%	6.7%
Jan-13	7.8%	6.4%	8.2%	4.9%	4.3%	6.5%
Feb-13	7.6%	6.3%	8.4%	5.0%	4.4%	6.4%
Mar-13	7.8%	6.2%	8.4%	5.1%	4.2%	6.8%
Apr-13	8.0%	6.2%	8.4%	4.7%	4.4%	6.8%
May-13	8.2%	6.1%	8.0%	4.9%	4.5%	6.8%
Jun-13	8.2%	6.3%	7.8%	5.0%	4.6%	6.5%
Jul-13	8.2%	6.7%	7.8%	5.3%	4.8%	6.6%
Aug-13	8.4%	6.9%	7.8%	5.0%	5.2%	6.8%
Sep-13	8.3%	6.5%	7.9%	4.7%	5.1%	6.9%
Oct-13	8.2%	6.2%	8.0%	4.6%	5.3%	6.7%
Nov-13	7.9%	5.9%	8.2%	4.6%	5.1%	6.6%
Dec-13	8.0%	6.2%	8.4%	4.7%	5.5%	6.4%

Source : Statistics Canada – Labour Force Survey
Seasonally Adjusted 3 Month Moving Averages



High Rise Buildings Under Construction North American Cities (Emporis)



Source : www.emporis.com
Updated January 6, 2014

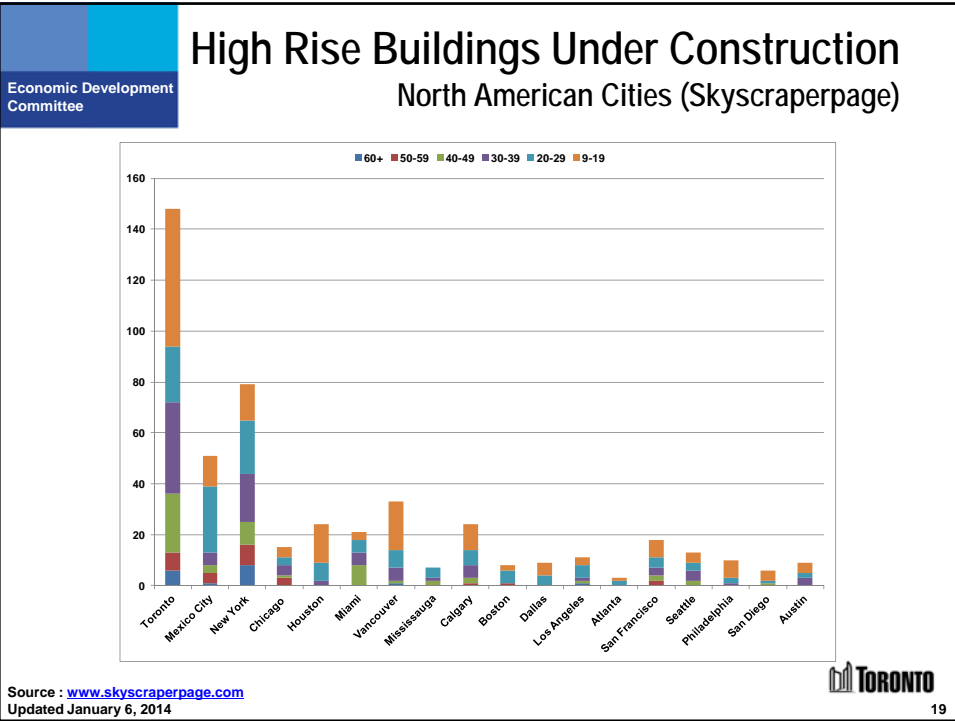


Tallest Buildings Under Construction City of Toronto

Building	Address	Metres	Feet	Floors	Year
1 Aura at College Park	388 Yonge St	272	892	78	2014
2 Number One Bloor	1 Bloor St E	257	844	75	2016
3 Ice Condominiums East	16 York St	234	768	67	2014
4 Harbour Plaza Residences East	90 Harbour St	233	764	66	2017
5 Harbour Plaza Residences West	1 York St	224	735	62	2017
6 Ice Condominiums West	16 York St	204	669	57	2013
7 Bay-Adelaide East	333 Bay St	196	643	44	2016
8 Casa 2	42 Charles St. E	184	604	56	2015
9 U Condominiums II	St Mary St	184	604	55	2014
10 INDX Condominiums	66 Temperance St	179	587	54	2015
11 One York Street	1 York St	174	569	35	2016
12 Hullmark Centre I	4759 Yonge St	171	561	45	2014
13 Karma	9 Grenville Street	166	544	50	2015
14 FIVE	5 St. Joseph St	161	528	48	2014
15 X2	580 Jarvis St	160	525	44	2014
16 Southcore Financial Centre Delta Hotel	Lower Simcoe Street	160	524	47	2014
17 Theatre Park	224 King West	157	515	47	2014
18 U Condominiums I	St Mary St	154	505	45	2014
19 Westlake Village 1	Parklawn and Lake Shore	153	503	48	2014
20 Chaz on Charles	45 Charles St E	151	497	47	2014
21 Westlake Village 2	Parklawn and Lake Shore	147	484	44	2014
22 Pace Condominiums	200 Jarvis	146	480	42	2015
23 Cinema Condominiums	21 W idmer St	143	468	43	2013
24 Emerald Park East Toronto	580 Jarvis St	142	464	39	2015
25 Emerald Park West Toronto	580 Jarvis St	112	369	30	2015

Source : This list was composed on December 9, 2013 from the CTBUH Tall Buildings Database





High Rise Buildings Under Construction City of Toronto by number of floors

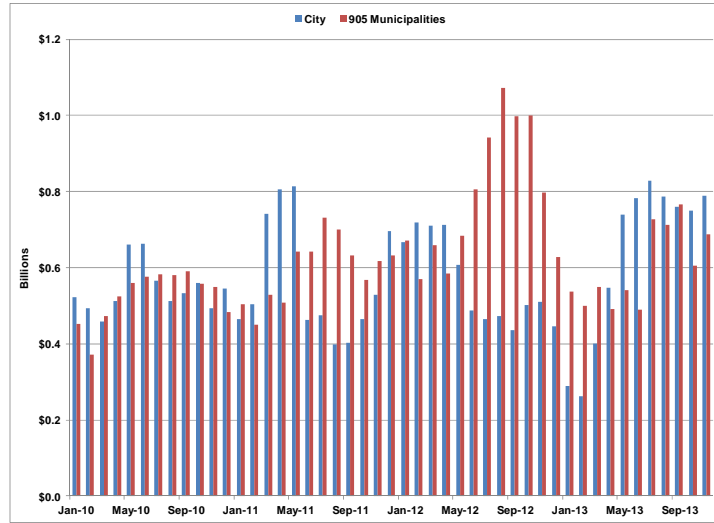
Economic Development Committee

Floors	Number of Buildings	Total Floors	Percent of Total
70+	2	153	3.5%
60-69	4	201	4.7%
50-59	7	394	9.1%
40-49	23	1,062	24.6%
30-39	36	1,248	28.9%
20-29	22	622	14.4%
9-19	54	636	14.7%
Total	148	4,316	100.0%

Source : www.skyscraperpage.com
Updated January 6, 2014

20

Total Value of Building Permits City and "905" area



Source : Statistics Canada, 3MMA



21

Total Value of Building Permits City and "905" area

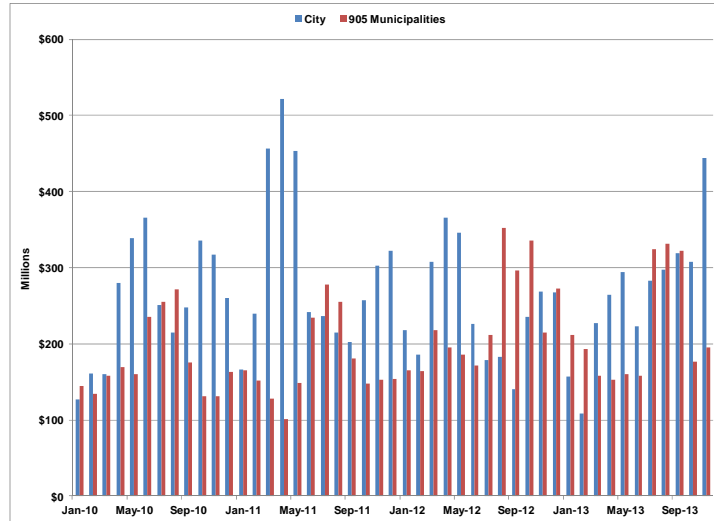
	3MMA Billions \$		12MMA Billions \$	
	City	905 Municipalities	City	905 Municipalities
Nov-12	\$0.51	\$0.80	\$0.57	\$0.78
Dec-12	\$0.45	\$0.63	\$0.55	\$0.76
Jan-13	\$0.29	\$0.54	\$0.50	\$0.76
Feb-13	\$0.26	\$0.50	\$0.48	\$0.74
Mar-13	\$0.40	\$0.55	\$0.47	\$0.75
Apr-13	\$0.55	\$0.49	\$0.46	\$0.72
May-13	\$0.74	\$0.54	\$0.49	\$0.73
Jun-13	\$0.78	\$0.49	\$0.51	\$0.71
Jul-13	\$0.83	\$0.73	\$0.54	\$0.70
Aug-13	\$0.79	\$0.71	\$0.56	\$0.67
Sep-13	\$0.76	\$0.77	\$0.58	\$0.64
Oct-13	\$0.75	\$0.60	\$0.62	\$0.61
Nov-13	\$0.79	\$0.69	\$0.63	\$0.60

Source : Statistics Canada



22

Value of ICI Building Permits City and "905" area



Source : Statistics Canada, 3MMA



23

Value of ICI Building Permits City and "905" area

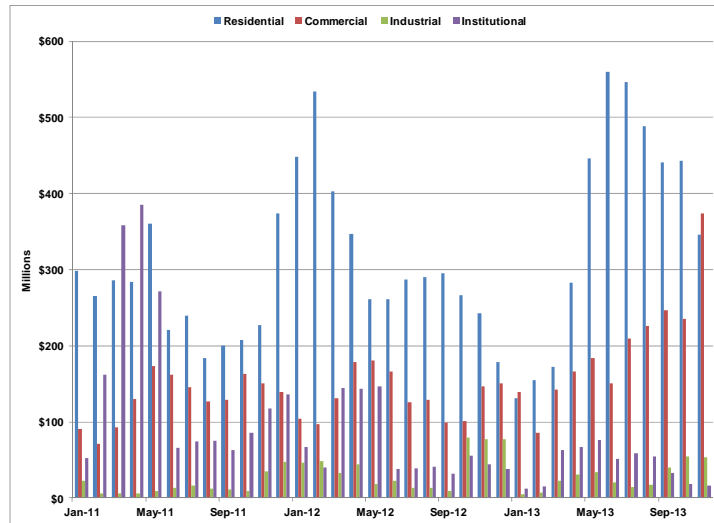
	3MMA		12MMA	
	Millions \$		Millions \$	
	City	905 Municipalities	City	905 Municipalities
Nov-12	\$268.2	\$215.0	\$249.5	\$225.5
Dec-12	\$267.2	\$272.4	\$232.9	\$234.0
Jan-13	\$157.3	\$211.2	\$228.1	\$231.3
Feb-13	\$107.8	\$192.7	\$224.2	\$231.9
Mar-13	\$227.4	\$158.0	\$242.6	\$232.6
Apr-13	\$264.0	\$153.1	\$218.0	\$216.4
May-13	\$293.9	\$159.7	\$207.5	\$223.7
Jun-13	\$222.7	\$158.4	\$214.2	\$226.2
Jul-13	\$282.5	\$324.2	\$230.9	\$251.8
Aug-13	\$297.2	\$331.8	\$234.9	\$251.4
Sep-13	\$319.5	\$322.5	\$245.7	\$219.4
Oct-13	\$308.0	\$176.8	\$269.7	\$224.2
Nov-13	\$443.8	\$195.3	\$283.0	\$218.9

Source : Statistics Canada



24

Value of Building Permits City of Toronto



Source : Statistics Canada, 3MMA



25

Value of Building Permits City of Toronto

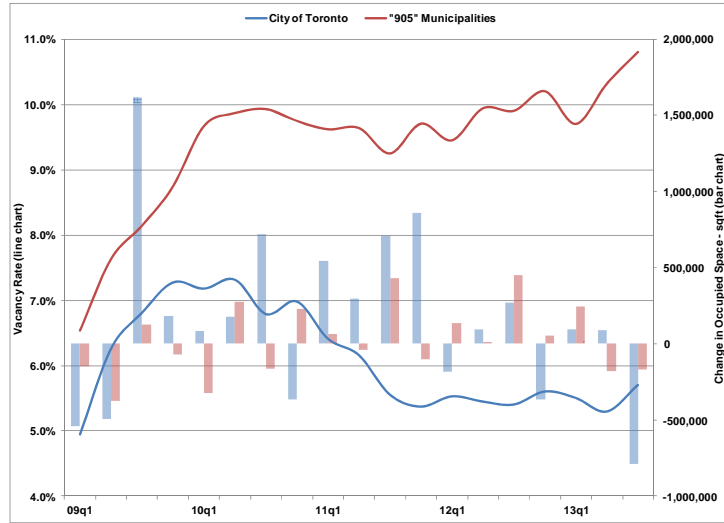
	3MMA				12 MMA			
	Residential	Commercial	Industrial	Institutional	Residential	Commercial	Industrial	Institutional
Nov-12	242.2	146.2	77.7	44.3	323.4	135.2	42.9	71.4
Dec-12	178.9	151.0	77.6	38.5	313.7	133.0	36.7	63.3
Jan-13	131.0	139.5	5.4	12.3	273.6	135.0	33.2	59.9
Feb-13	155.3	85.5	6.8	15.5	255.7	130.9	33.7	59.6
Mar-13	172.7	141.9	22.5	63.0	230.3	143.4	30.6	68.6
Apr-13	282.8	166.5	30.6	66.9	245.8	143.3	32.6	42.0
May-13	446.4	183.4	34.2	76.3	278.6	132.1	31.4	44.0
Jun-13	559.5	150.8	20.2	51.7	299.1	136.5	31.0	46.7
Jul-13	546.1	209.7	14.1	58.7	311.6	153.4	30.8	46.7
Aug-13	488.8	225.7	17.4	54.1	325.2	155.1	32.4	47.4
Sep-13	440.7	246.3	40.1	33.1	333.8	163.6	37.3	44.8
Oct-13	442.7	235.5	54.3	18.3	345.5	184.9	41.2	43.5
Nov-13	345.9	374.0	53.8	16.0	343.7	218.2	26.4	38.4

Source : Statistics Canada



26

Office Vacancy Rate & Occupied Space Toronto Region



Source : Cushman & Wakefield



27

Office Vacancy Rate & Occupied Space Toronto Region

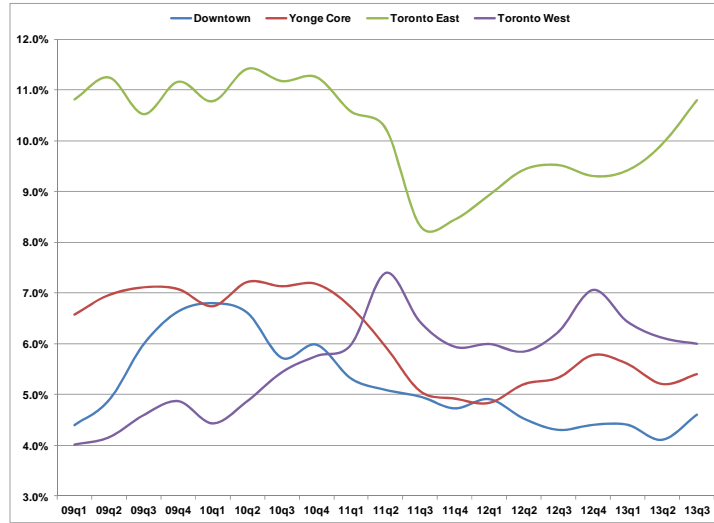
	Vacancy Rates		Occupied Change (sqft)	
	City of Toronto	"905" Municipalities	City of Toronto	"905" Municipalities
09q1	4.9%	6.5%	-540,593	-145,773
09q2	6.3%	7.6%	-496,133	-377,490
09q3	6.8%	8.1%	1,616,200	126,429
09q4	7.3%	8.7%	182,200	-70,085
10q1	7.2%	9.7%	84,363	-325,338
10q2	7.3%	9.9%	179,855	274,972
10q3	6.8%	9.9%	721,938	-165,920
10q4	7.0%	9.7%	-365,962	226,637
11q1	6.4%	9.6%	544,547	64,008
11q2	6.2%	9.6%	295,276	-36,926
11q3	5.6%	9.2%	710,300	429,508
11q4	5.4%	9.7%	859,740	-101,090
12q1	5.5%	9.4%	-185,645	136,145
12q2	5.4%	9.9%	95,035	13,171
12q3	5.4%	9.9%	268,342	453,405
12q4	5.6%	10.2%	-364,233	51,801
13q1	5.5%	9.7%	93,657	246,178
13q2	5.3%	10.3%	90,798	-179,920
13q3	5.7%	10.8%	-787,573	-169,576

Source : Cushman & Wakefield



28

Office Vacancy Rates City of Toronto



Source : Cushman & Wakefield



29

Office Vacancy Rates City of Toronto

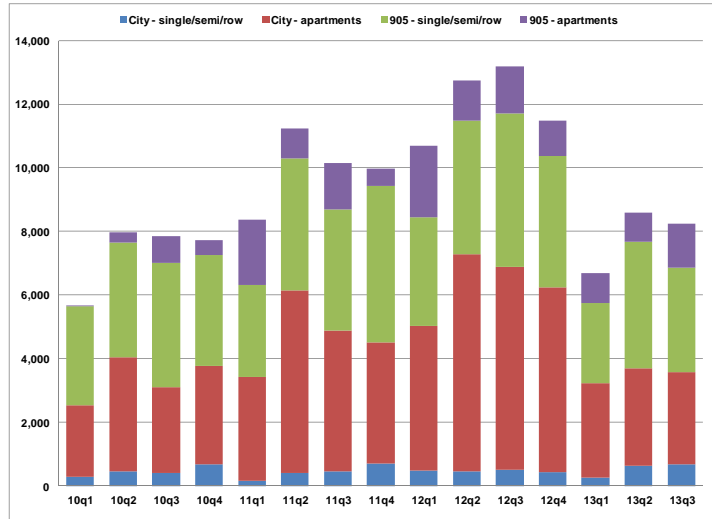
	Downtown	Yonge Core	Toronto East	Toronto West
09q1	4.4%	6.6%	10.8%	4.0%
09q2	4.9%	7.0%	11.2%	4.2%
09q3	6.0%	7.1%	10.5%	4.6%
09q4	6.6%	7.1%	11.2%	4.9%
10q1	6.8%	6.7%	10.8%	4.4%
10q2	6.6%	7.2%	11.4%	4.9%
10q3	5.7%	7.1%	11.2%	5.4%
10q4	6.0%	7.2%	11.3%	5.8%
11q1	5.3%	6.7%	10.6%	6.0%
11q2	5.1%	5.9%	10.2%	7.4%
11q3	5.0%	5.1%	8.3%	6.4%
11q4	4.7%	4.9%	8.4%	5.9%
12q1	4.9%	4.8%	8.9%	6.0%
12q2	4.5%	5.2%	9.4%	5.8%
12q3	4.3%	5.3%	9.5%	6.2%
12q4	4.4%	5.8%	9.3%	7.1%
13q1	4.4%	5.6%	9.4%	6.4%
13q2	4.1%	5.2%	9.9%	6.1%
13q3	4.6%	5.4%	10.8%	6.0%

Source : Cushman & Wakefield



30

Housing Starts Toronto Region



Source : CMHC – Housing Now



31

Housing Starts Toronto Region

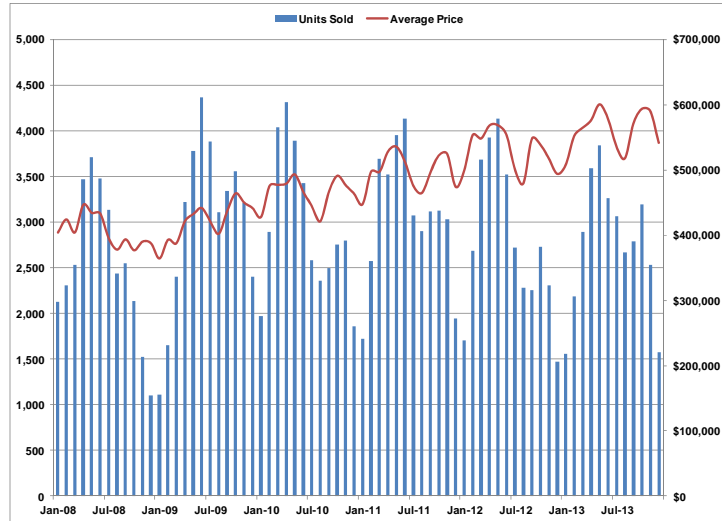
	City - single/semi/row	City - apartments	905 - single/semi/row	905 - apartments
09q1	346	2,696	1,776	1,086
09q2	269	2,214	2,644	512
09q3	502	2,769	2,893	548
09q4	313	2,810	4,337	234
10q1	281	2,242	3,120	26
10q2	458	3,582	3,620	302
10q3	418	2,686	3,893	848
10q4	673	3,085	3,492	469
11q1	157	3,276	2,875	2,069
11q2	398	5,744	4,154	946
11q3	469	4,409	3,813	1,456
11q4	705	3,814	4,917	543
12q1	984	4,037	3,422	2,239
12q2	452	6,833	4,206	1,245
12q3	616	6,261	4,824	1,497
12q4	436	5,797	4,145	1,110
13q1	265	2,960	2,530	940
13q2	638	3,048	3,992	904
13q3	677	2,887	3,163	1,444

Source : CMHC – Housing Now



32

MLS Sales and Prices City of Toronto



Source: Toronto Real Estate Board



33

MLS Sales and Prices City of Toronto

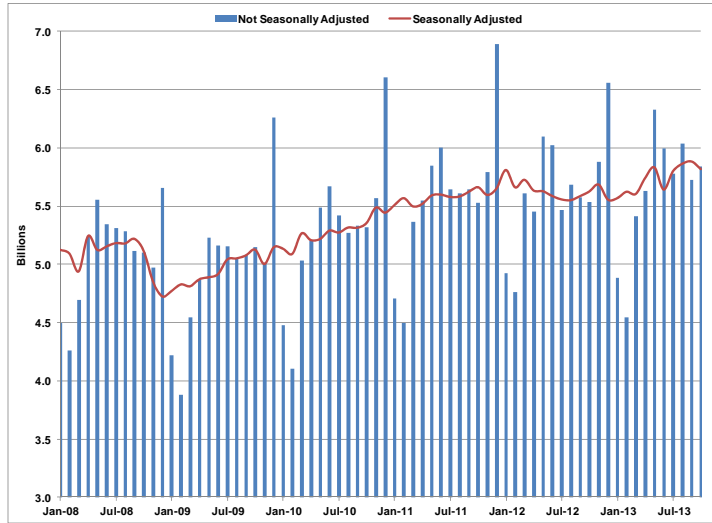
	Units Sold	Average Price
Dec-11	1,948	\$474,270
Jan-12	1,705	\$499,045
Feb-12	2,686	\$553,519
Mar-12	3,682	\$548,354
Apr-12	3,925	\$568,436
May-12	4,130	\$568,768
Jun-12	3,520	\$554,077
Jul-12	2,721	\$500,934
Aug-12	2,282	\$479,769
Sep-12	2,255	\$547,901
Oct-12	2,730	\$539,188
Nov-12	2,308	\$517,866
Dec-12	1,470	\$494,127
Jan-13	1,559	\$507,859
Feb-13	2,189	\$552,014
Mar-13	2,891	\$564,793
Apr-13	3,591	\$576,315
May-13	3,840	\$600,791
Jun-13	3,265	\$578,575
Jul-13	3,062	\$536,181
Aug-13	2,665	\$518,145
Sep-13	2,789	\$571,410
Oct-13	3,190	\$593,807
Nov-13	2,528	\$590,366
Dec-13	1,574	\$541,771

Source: Toronto Real Estate Board



34

Monthly Retail Sales Toronto Region



Source: Statistics Canada, Seasonal Adjustments by City of Toronto

Monthly Retail Sales Toronto Region

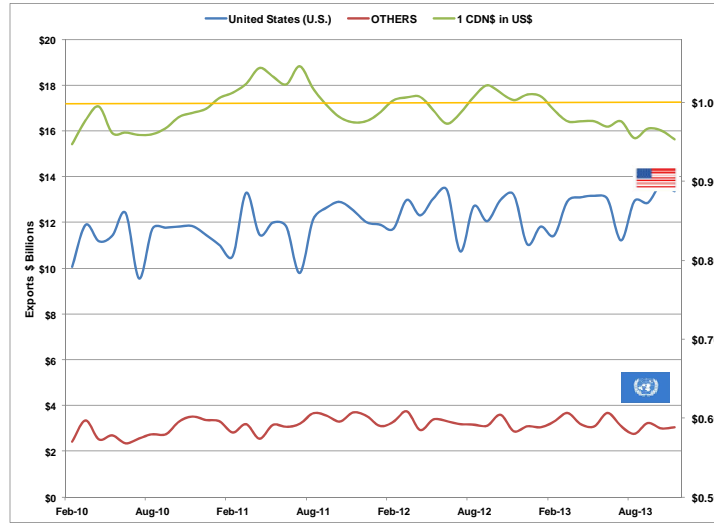
(\$Billions)

	Unadjusted		Seasonally Adjusted	
	Monthly	3 Month Average	Monthly	3 Month Average
Oct-11	5.53	5.59	5.66	5.62
Nov-11	5.80	5.66	5.60	5.63
Dec-11	6.89	6.07	5.65	5.64
Jan-12	4.93	5.87	5.81	5.69
Feb-12	4.76	5.53	5.66	5.71
Mar-12	5.61	5.10	5.73	5.73
Apr-12	5.45	5.28	5.64	5.68
May-12	6.10	5.72	5.63	5.66
Jun-12	6.02	5.86	5.59	5.62
Jul-12	5.47	5.86	5.56	5.59
Aug-12	5.68	5.72	5.55	5.57
Sep-12	5.57	5.58	5.59	5.57
Oct-12	5.54	5.60	5.63	5.59
Nov-12	5.88	5.66	5.69	5.63
Dec-12	6.56	5.99	5.56	5.62
Jan-13	4.88	5.77	5.57	5.61
Feb-13	4.55	5.33	5.63	5.58
Mar-13	5.42	4.95	5.61	5.60
Apr-13	5.63	5.20	5.74	5.66
May-13	6.33	5.79	5.84	5.73
Jun-13	6.00	5.99	5.64	5.74
Jul-13	5.78	6.04	5.80	5.76
Aug-13	6.04	5.94	5.87	5.77
Sep-13	5.73	5.85	5.89	5.85
Oct-13	5.84	5.87	5.82	5.86



Source: Statistics Canada, Seasonal Adjustment 3MMA, Seasonal Adjustments by City of Toronto

Ontario Merchandise Exports & US\$ Exchange Rate



Source: Bank of Canada and Industry Canada



Ontario Merchandise Exports & US\$ Exchange Rate

	(\$Billions)		
	US	All Others	1 CDN\$ in US\$
Nov-12	13.20	2.87	1.00
Dec-12	11.05	3.09	1.01
Jan-13	11.82	3.05	1.01
Feb-13	11.43	3.30	0.99
Mar-13	12.92	3.68	0.98
Apr-13	13.10	3.19	0.98
May-13	13.16	3.09	0.98
Jun-13	13.02	3.68	0.97
Jul-13	11.22	3.11	0.98
Aug-13	12.93	2.76	0.95
Sep-13	12.86	3.24	0.97
Oct-13	13.65	3.00	0.96
Nov-13	13.36	3.05	0.95

Source: Bank of Canada and Industry Canada





td TOMORROW