

Rouge National Urban Park: Transfer of Lands to Parks Canada

Presentation to Executive Committee

February 4, 2014

by Toronto City Planning



Rivière Rouge to National Park

1700s - French explorers recorded it as Rivière Rouge on maps

1956 – portions of Rouge Valley were identified as public open space

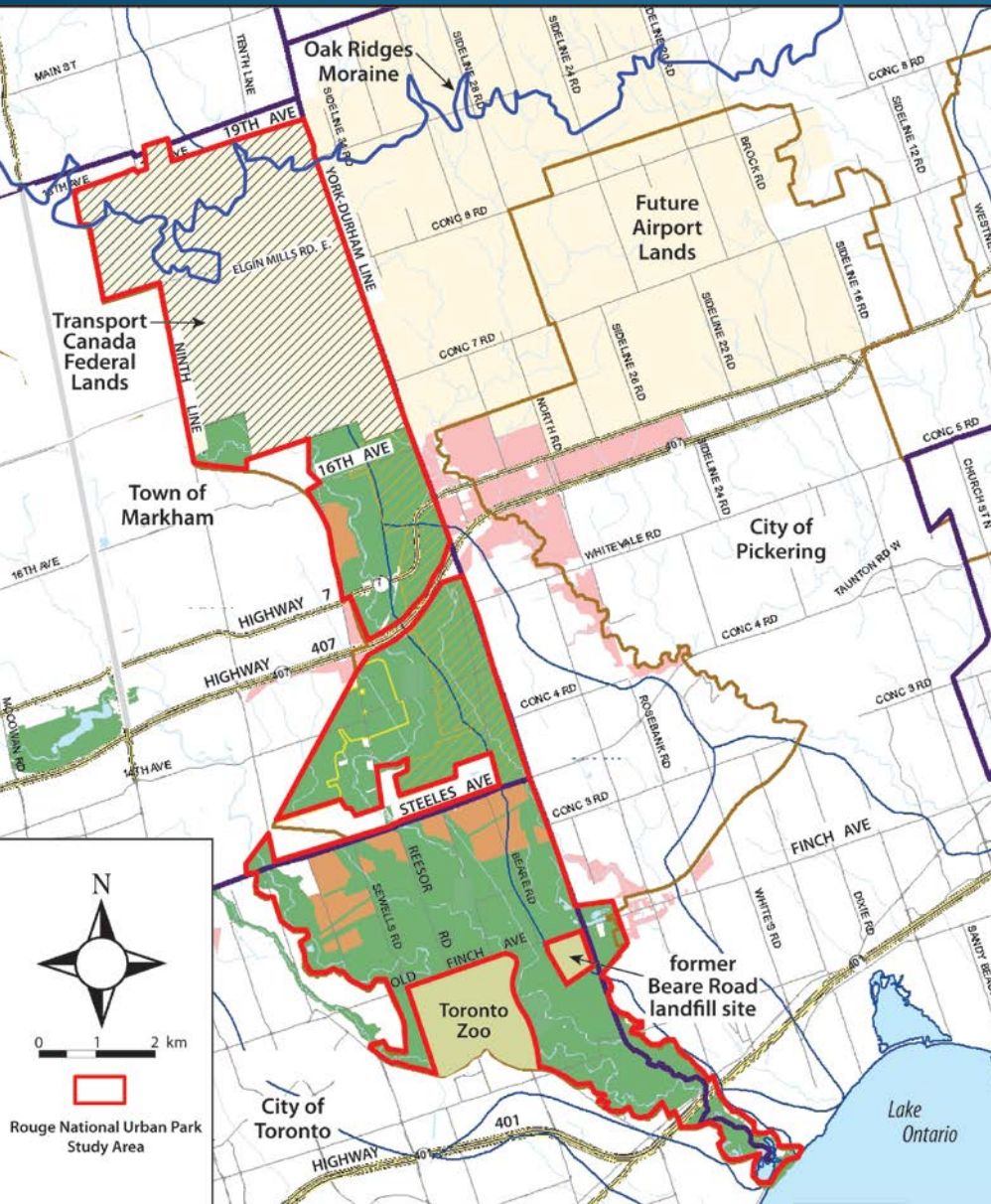
1994 - Province adopts Rouge Park Management Plan

1995 - Rouge Park Alliance established

2011 - Federal Government announces intention to create RNUP

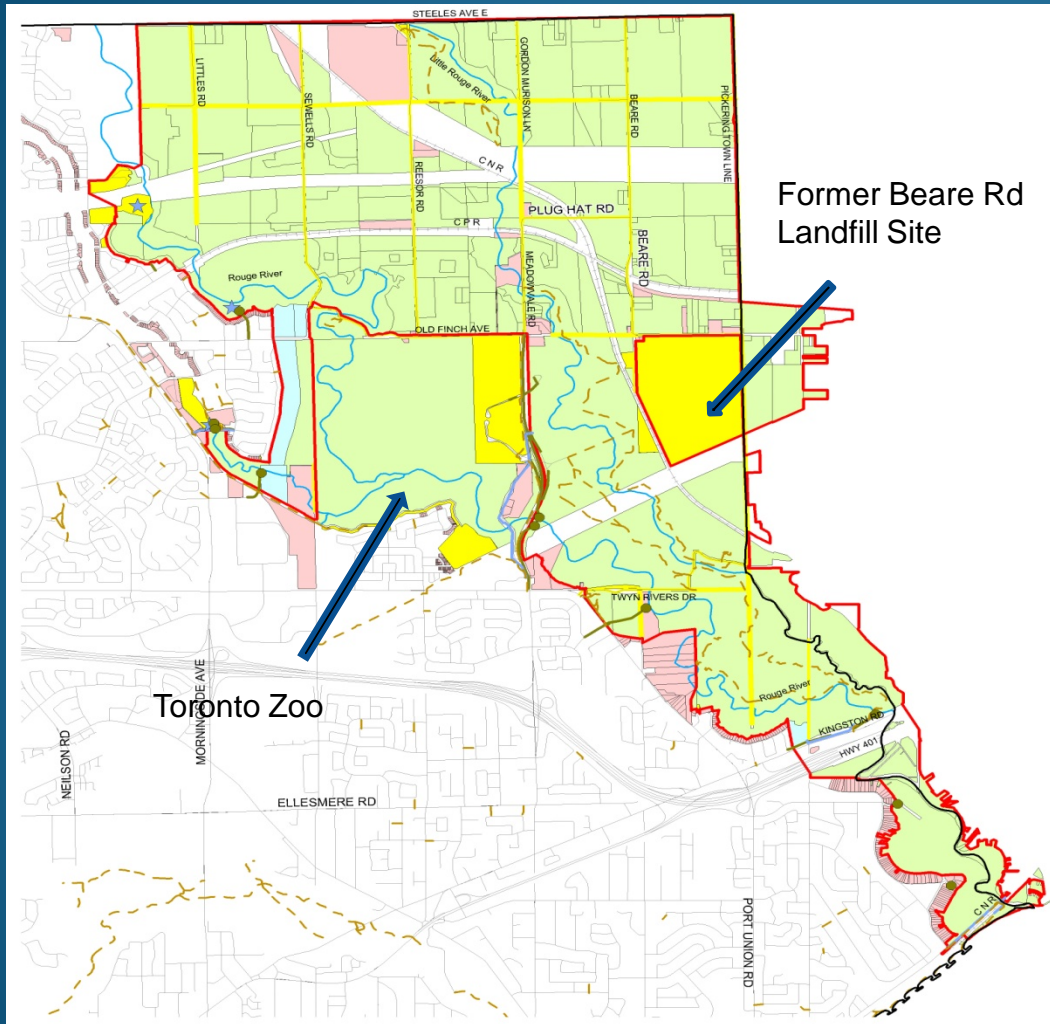
2012 - Parks Canada and public landholders begin work of establishing park through Landholders Table

Study Area and Landholders Table



Established by Parks Canada to bring together public land holders to discuss and come to agreement on the lands to be included in the Park and the process by which lands will be transferred

RNUP Study Area in Toronto



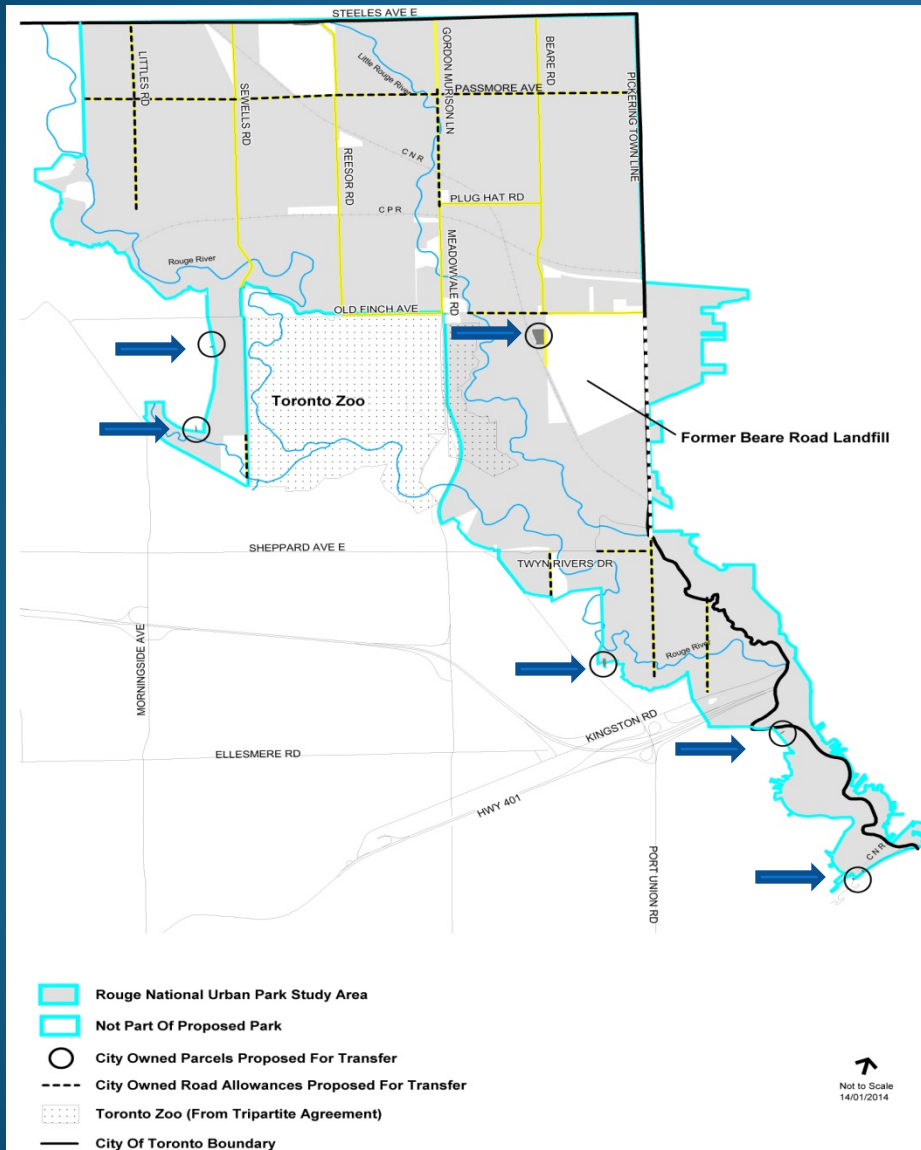
Most of land is owned by TRCA

Toronto Zoo and former Beare Rd landfill site not part of study area

Private land, existing roads and utility corridors are not part of proposed park

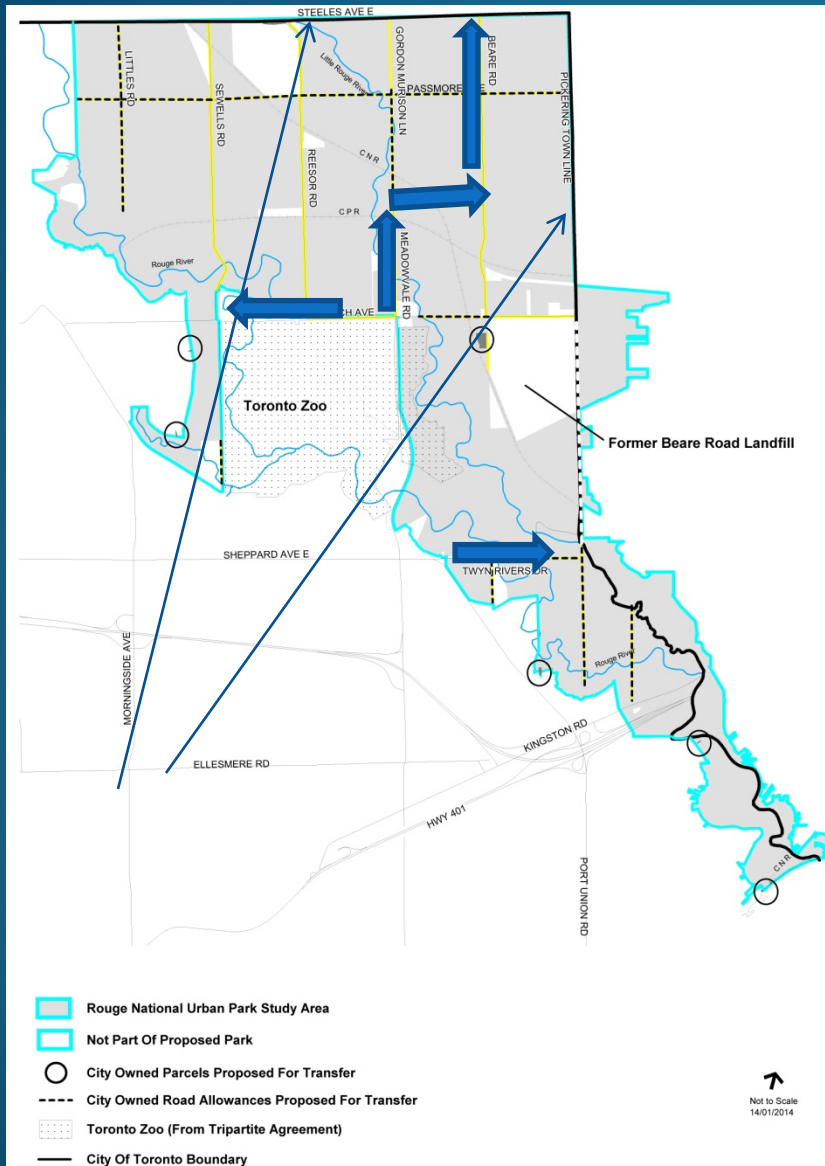
A few small parcels and road rights of way within study area owned by City

City-owned Land Proposed for Transfer



- 25.5 ha of surplus roads
- 1.3 ha of vacant parcels

Land for Future Transportation



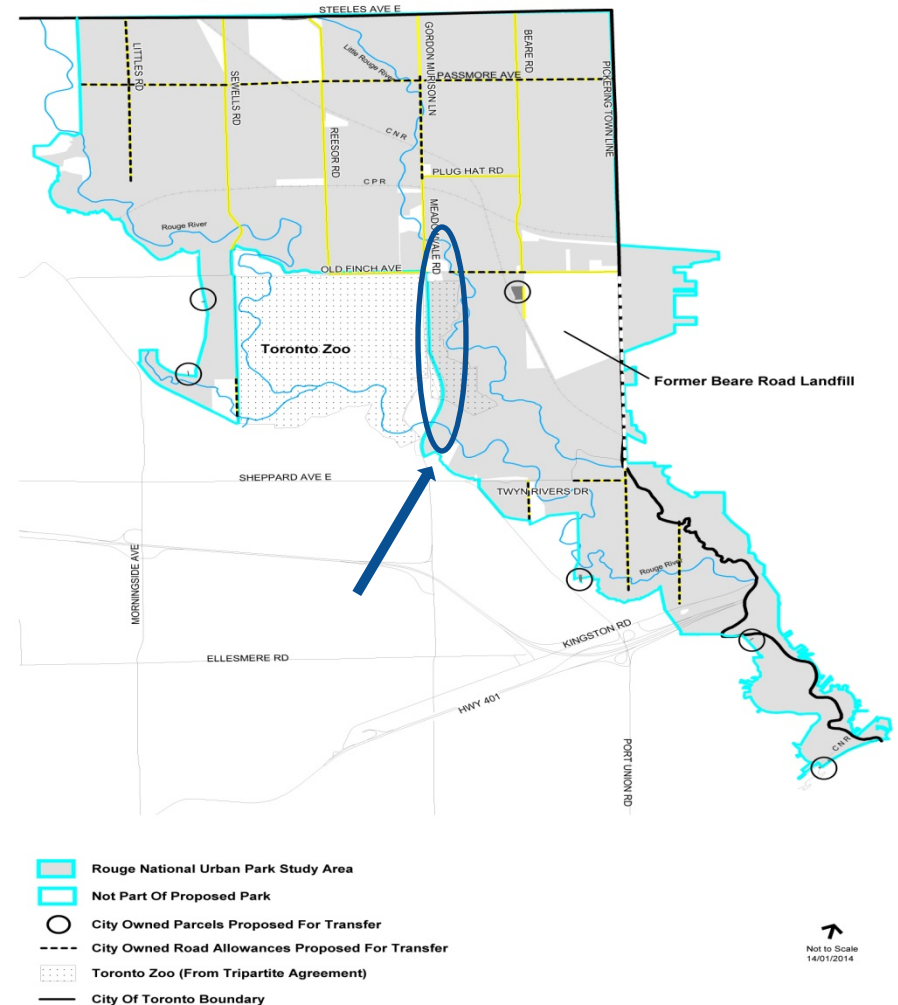
- 7.7 ha of TRCA-owned land along existing roads is required for future transportation needs:
 - Road widening
 - Bike lanes
 - Safety improvements
- TRCA to transfer land to the City

Relationship to Zoo

Strategically located

Ongoing collaboration with
Parks Canada

Boundary of Zoo to be
secured by way of separate
agreement before TRCA
lands are transferred to
Parks Canada



Further Information

- Parks Canada web site:
- <http://www.pc.gc.ca/eng/progs/np-pn/cnnp-cnpn/rouge/index.aspx>
- Toronto , Parks Forestry and Recreation web site:
- <http://www.toronto.ca/parks/featured-parks/rouge-park/>