

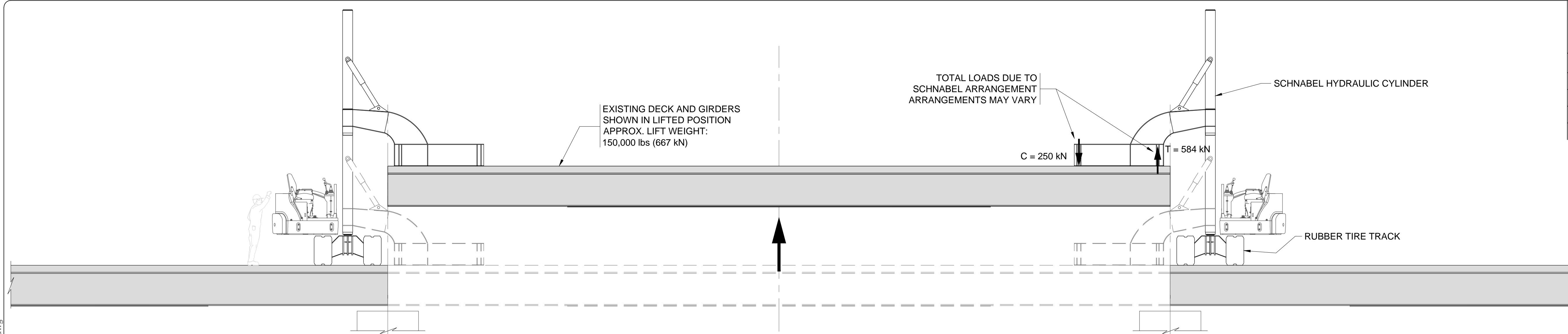
---

**APPENDIX K**  
**Proposed Accelerated Bridge Construction – Elevated Section**

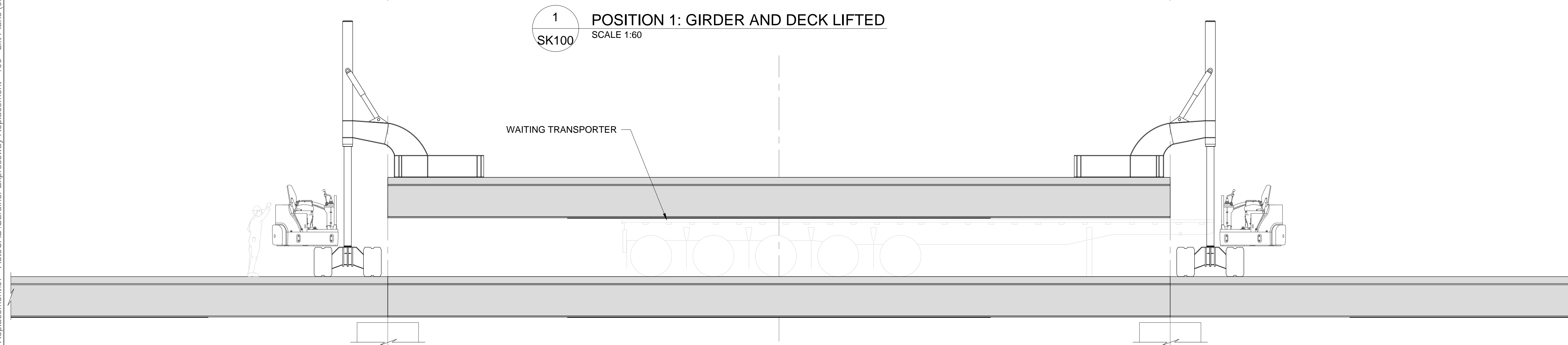
---

THIS DRAWING AND THE INFORMATION IT HOLDS IS THE PROPERTY OF WESTERN MECHANICAL ELECTRICAL MILLWRIGHT SERVICES LTD. AND IS NOT TO BE LOANED COPIED OR DISCLOSED WITHOUT WRITTEN PERMISSION.

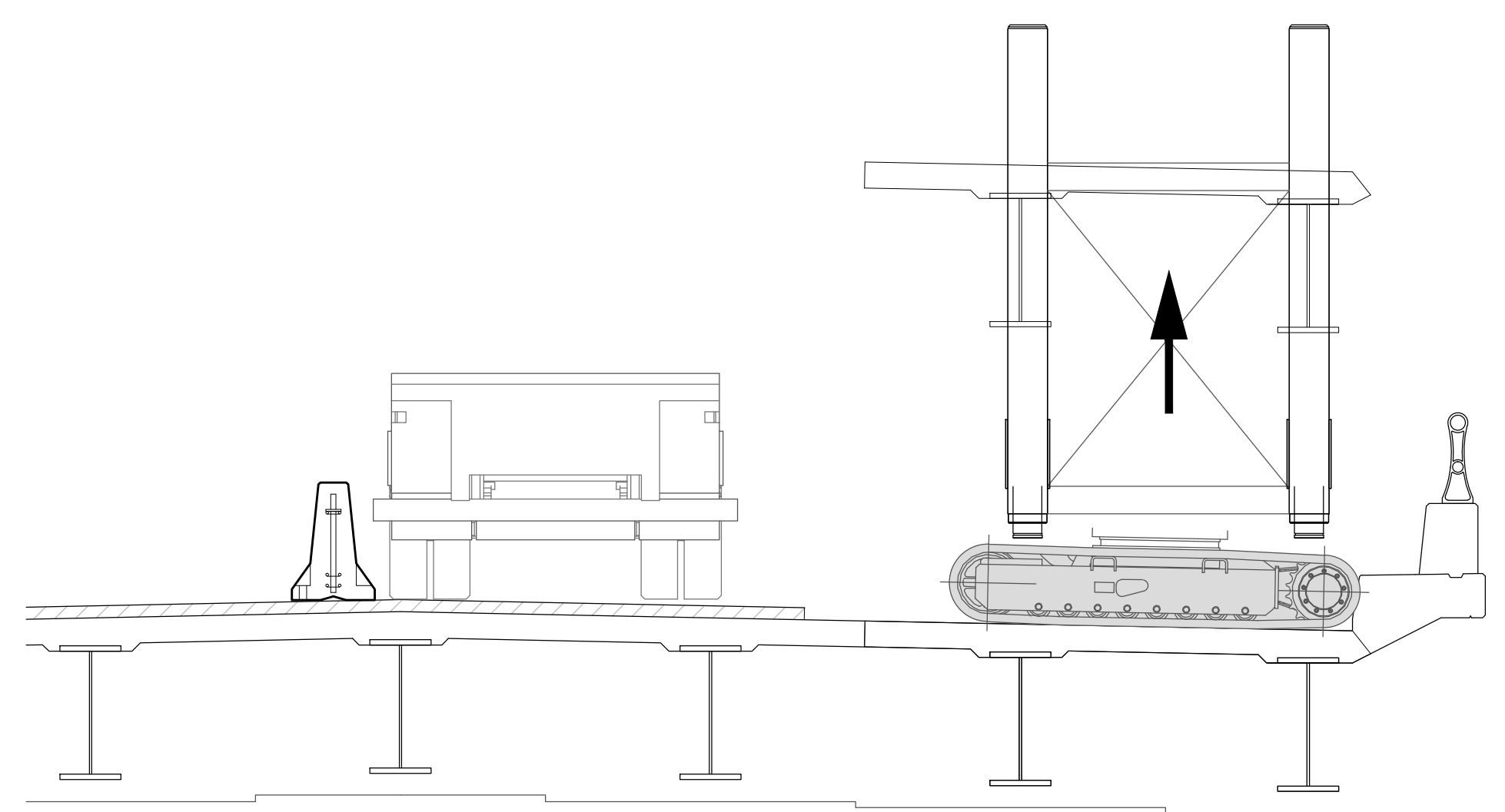
REV	DATE	DESCRIPTION	ISS BY	CKD BY
1	2013 12 13	ISSUED FOR CONCEPT	BE	MC



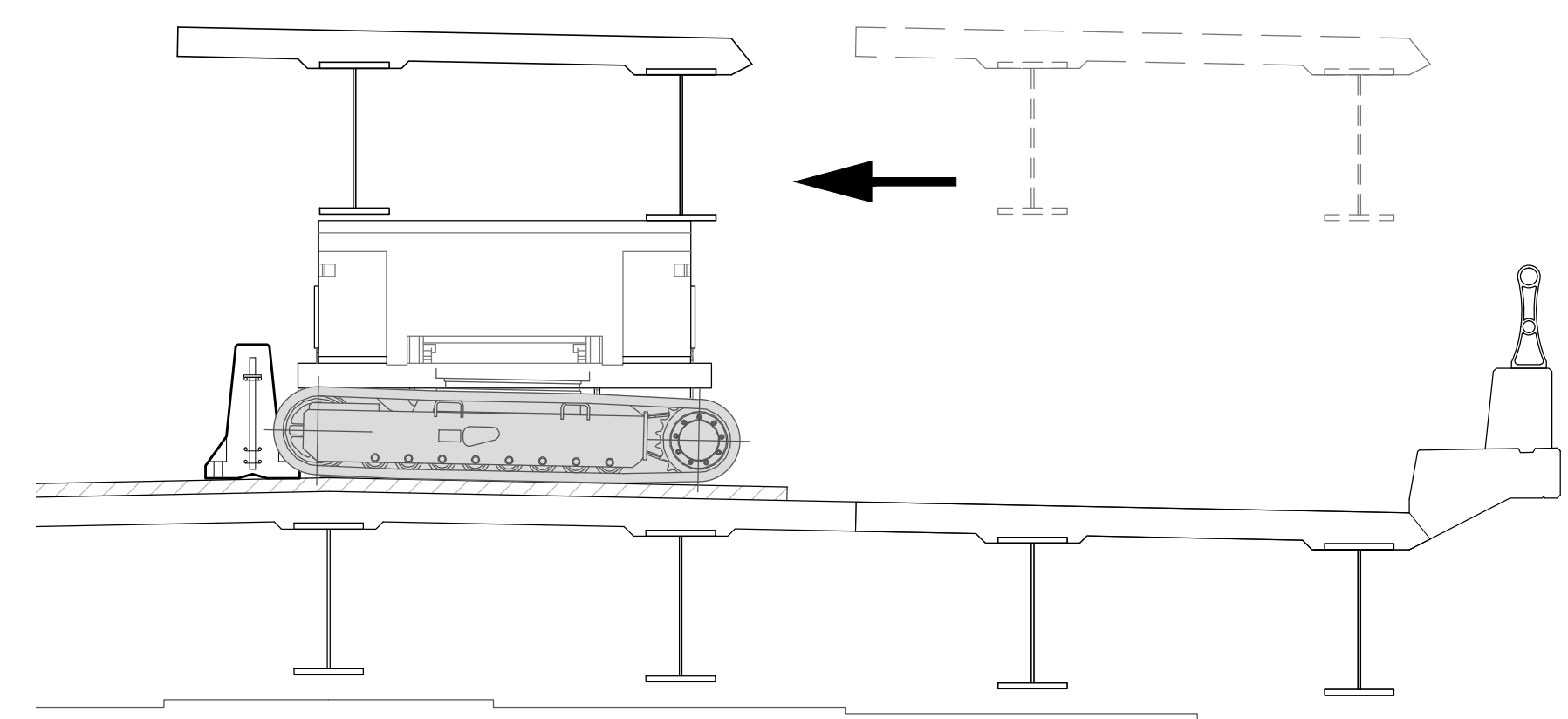
**1** POSITION 1: GIRDER AND DECK LIFTED  
SK100 SCALE 1:60



**2** POSITION 2: LATERAL TRAVEL TO TRANSPORTER  
SK100 SCALE 1:60



**3** POSITION 1  
SK100 SCALE 1:40



**4** POSITION 2  
SK100 SCALE 1:40

- PROCEDURE:**
1. DRIVE RUBBER TIRE TRACK TO LIFT POSITIONS.
  2. CONNECT SCHNABEL TO DECK AND GIRDERS BEING REMOVED.
  3. LIFT GIRDERS AND DECK WITH SCHNABEL.
  4. DRIVE RUBBER TIRE TRACK LATERALLY TO WAITING TRANSPORT.
  5. LOWER GIRDER AND DECK AND DISCONNECT SCHNABEL FROM GIRDER.
  6. DRIVE RUBBER TIRE TRACK LATERALLY OUT OF THE WAY OF TRANSPORTER.
  7. REMOVE TRANSPORTER AND GIRDERS.
  8. REPEAT IN REVERSE FOR INSTALLATION OF NEW GIRDERS AND DECK.

SEAL

DOCUMENTS NOT VALID FOR CONSTRUCTION UNLESS SIGNED ABOVE

**PRELIMINARY**  
9/12/2013 3:42 PM



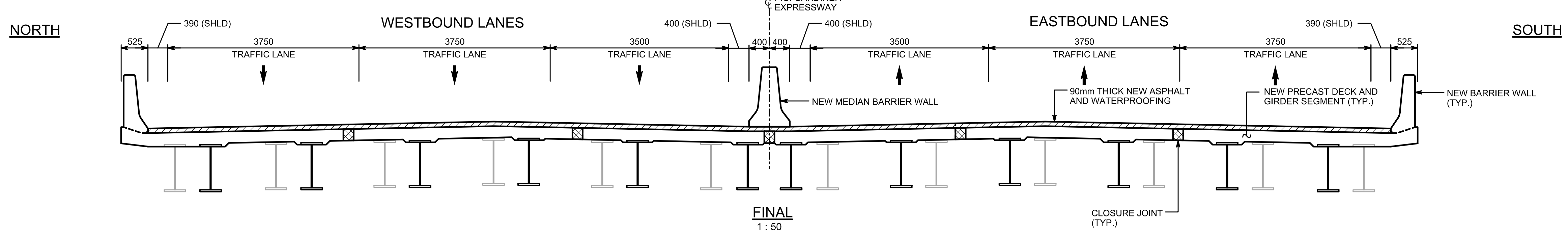
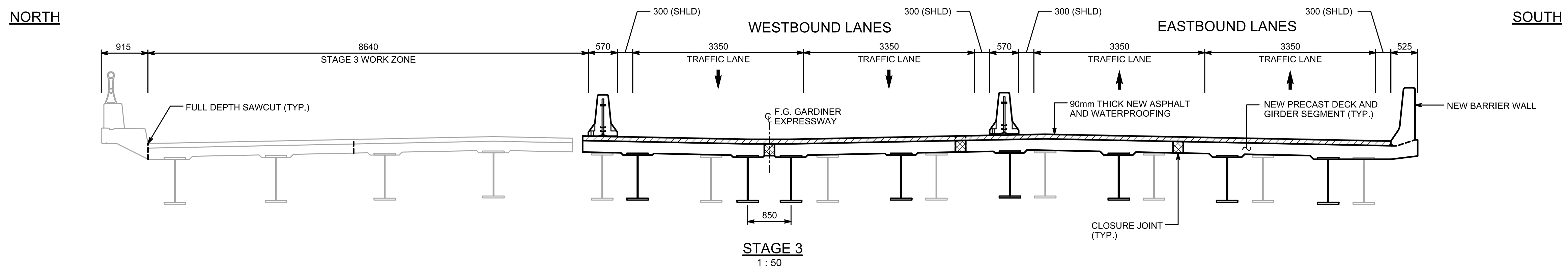
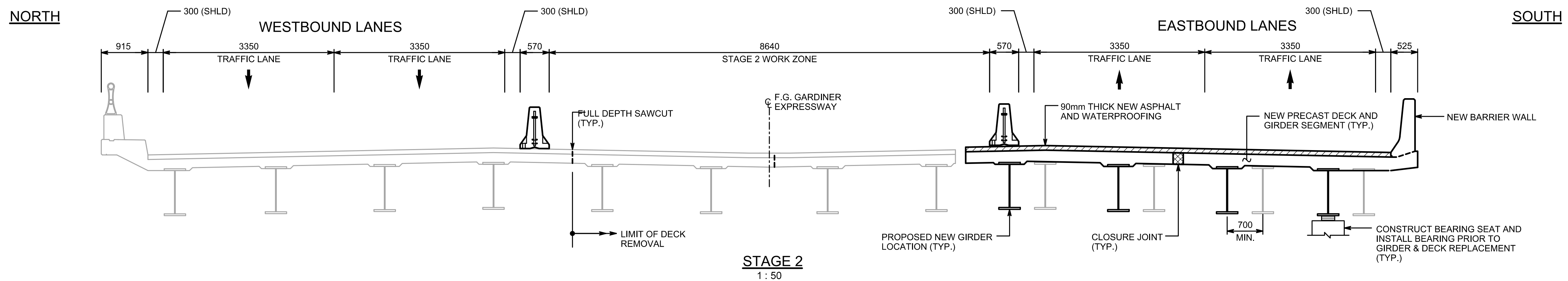
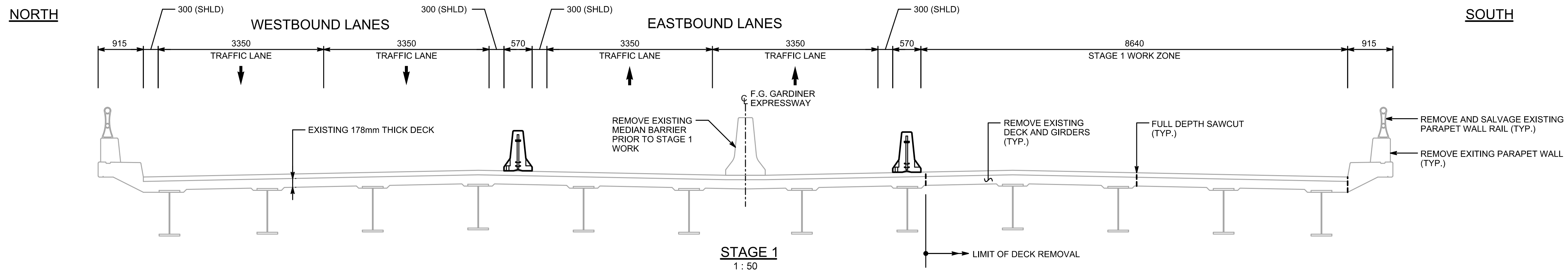
PROJECT No.  
DATE PLOTTED: 9/12/2013 3:42 PM

PROJECT:  
**GARDINER EXPRESSWAY SPAN REPLACEMENT**  
TORONTO, ON

DRAWING:  
**DECK TRACK SCHNABEL GENERAL ARRANGEMENT**

DRAWN BY: BE	DRAWING No. SK100
DRAWN DATE: 2013 09 03	
SCALE: AS NOTED	

PLOT BY: Ben Eacott PLOT TIME: 9/12/2013 3:42 PM DWG NAME: M:\Gardiner Expressway Replacement\07 - AutoCAD\Gardiner Expressway Replacement - 100 - Lift Plans (0F).dwg



CONSTRUCTION STAGING  
ACCELERATED METHOD

STRATEGIC PLAN FOR REHABILITATION OF  
F.G. GARDINER EXPRESSWAY  
APPENDIX K - CONSTRUCTION STAGING



**McCORMICK RANKIN**  
A member of  **MMM GROUP**

2655 North Sheridan Way, Suite 300  
Mississauga, ON L5K 2P8  
Canada



Mechanical · Electrical · Millwright Services Limited  
160 Brock Street, Barrie, Ontario L4N 2M4  
Telephone (705) 737-4135 Fax (705) 737-1765

## Gardiner Expressway Span Replacement Phase I

Description	Planned Target		Responsibility		Allocated Time (min)	Actual Time	Clocked Time Span	Actual Span replacement Issues description.
	Start	Finish	Western	OTHER				
<b>1 Work Block start.</b>		7 h 00						
2 Work block starts and new span is positioned with transport.	7 h 00	7 h 15		X	0 h 15			
3 Schnabel lift equipment is in place, powered up and ready for lifts.	7 h 00	7 h 15	X		0 h 15			
4 Connect schnabel to the existing deck segment to be removed.	7 h 15	7 h 35	X		0 h 20			
5 Lift the segment to travel height.	7 h 35	7 h 40	X		0 h 05			
6 Travel the rubber track schnabel to the receiving transport trailer.	7 h 40	7 h 45	X		0 h 05			
7 Lower the girder segment onto the transport trailer.	7 h 45	7 h 50	X		0 h 05			
8 Disconnect the rigging from the removed existing girder segment.	7 h 50	7 h 55	X		0 h 05			
9 Secure the existing span to the transport trailer.	7 h 55	8 h 05		X	0 h 10			
10 Travel the rubber track schnabel to the receiving transport trailer.	7 h 55	8 h 00	X		0 h 05			
11 Transport trailer leaves with the existing span clear of the site.	8 h 05	8 h 10		X	0 h 05			
12 Transport trailer rolls up into lift position with the new girder segment to be placed.	8 h 10	8 h 15		X	0 h 05			
13 New girder segment tie downs are removed form the trailer.	8 h 15	8 h 20		X	0 h 05			
14 Travel the rubber track schnabel to the transport trailer with the new girder segment.	8 h 15	8 h 20	X		0 h 05			
15 Rig the new girder segment to the schnabel equipment.	8 h 20	8 h 25	X		0 h 05			
16 Lift the new segment to travel height.	8 h 25	8 h 30	X		0 h 05			
17 Travel the rubber track schnabel with the new girder segment to lowering position.	8 h 30	8 h 35	X		0 h 05			
18 Lower the new girder span to position.	8 h 35	8 h 40	X		0 h 05			
19 Final adjustment and positioning of segment.	8 h 40	8 h 55	X	X	0 h 15			
20 Remove schnabel connection from segment deck.	8 h 55	9 h 15	X		0 h 20			
21 Prepare schnabel to travel to next girder segment.	9 h 15	9 h 25	X		0 h 10			
22 Transport trailer clears the area.	9 h 15	9 h 20		X	0 h 05			
23 Travel the Schnabel equipment to the next girder segment.	9 h 20	9 h 30	X		0 h 10			
24								
25 <b>One Girder Segment completed.</b>								
26 (repeat for following girder segments)								
27								
28								
29								
30								