

# Indicator Highlights - Annual

|  | Geography   | 2012      | 2013      | 2014      | 2013-14<br>% Change | Status |
|--|-------------|-----------|-----------|-----------|---------------------|--------|
| Gross Domestic Product<br>(Annual Growth)  | Toronto     | 1.4%      | 3.5%      | 2.4%      |                     |        |
|  | Canada      | 1.7%      | 2.0%      | 2.4%      |                     |        |
| Unemployment Rate                          | Toronto     | 9.8%      | 8.9%      | 9.5%      |                     |        |
|  | Canada      | 7.3%      | 7.1%      | 6.9%      |                     |        |
| Participation Rate                         | Toronto     | 65.4%     | 67.3%     | 64.8%     |                     |        |
|  | Canada      | 66.5%     | 66.5%     | 66.0%     |                     |        |
| Total Employed Residents (Thousands)       | Toronto     | 1,286.1   | 1,320.9   | 1,280.4   | -3.1%               |        |
|  | Canada      | 17,507.7  | 17,731.2  | 17,872.2  | 0.8%                |        |
| Total Value of Building Permits (Billions) | Toronto     | \$6.2     | \$7.9     | \$7.1     | -10.1%              |        |
|  | Canada      | \$80.9    | \$80.8    | \$85.0    | 5.2%                |        |
| Office Vacancy Rate<br>Q4                  | Toronto     | 5.6%      | 6.1%      | 6.1%      | 0.0%                |        |
| Average House Price                        | Toronto     | \$538,053 | \$565,860 | \$610,217 | 7.8%                |        |
|  | Canada      | \$363,700 | \$382,500 | \$408,100 | 6.7%                |        |
| Business Bankruptcies<br>Q3                | Toronto CMA | 505       | 458       | 346       | -24.5%              |        |
|  | Canada      | 3,309     | 3,194     | 3,087     | -3.4%               |        |
| Employment Insurance Recipients            | Toronto     | 357,020   | 347,760   | 349,610   | 0.5%                |        |
|  | Canada      | 6,664,970 | 6,281,220 | 6,625,540 | 5.5%                |        |
| Consumer Price Index (2002=100)            | Toronto CMA | 121.8     | 123.3     | 126.4     | 2.5%                |        |
|  | Canada      | 121.7     | 122.8     | 125.2     | 2.0%                |        |
| Retail Sales (Billions)                    | Toronto CMA | \$67.4    | \$68.9    | \$72.8    | 5.7%                |        |
|  | Canada      | \$468.1   | \$483.0   | \$505.6   | 4.7%                |        |

LFS



Negative



Caution

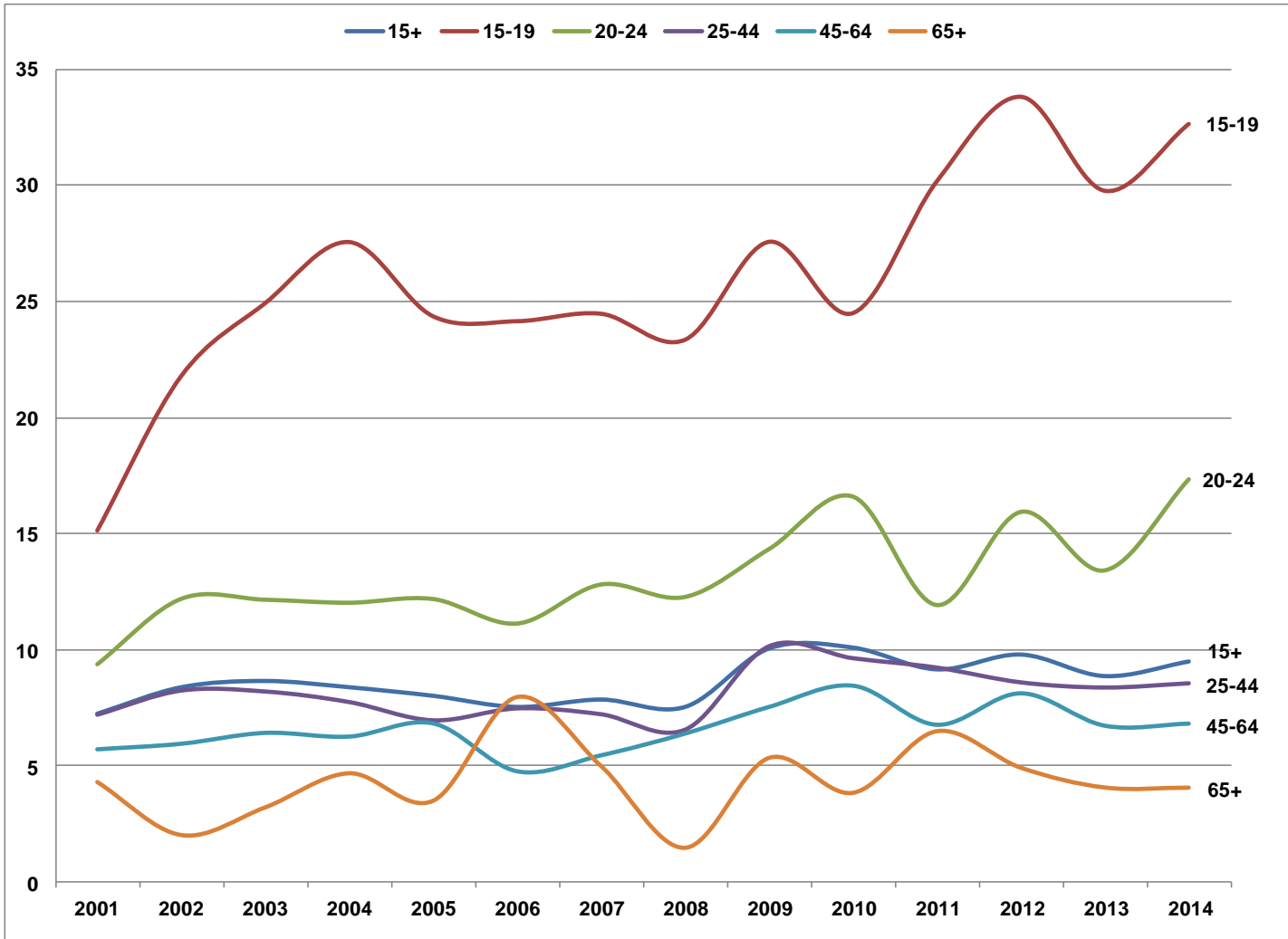


Positive

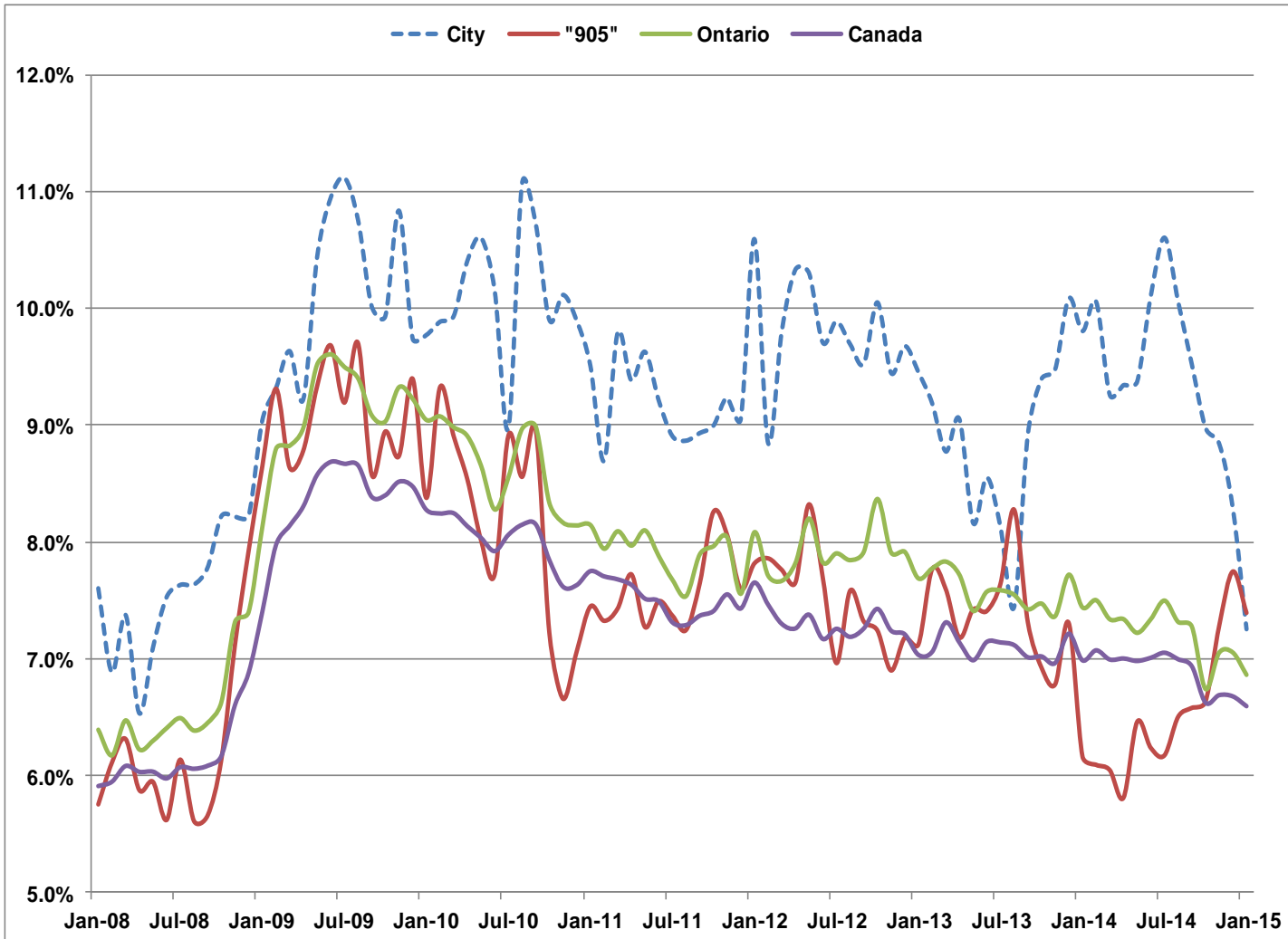
Note: Top symbol compares how Toronto's position has changed; bottom symbol compares Toronto's performance to Canada

# Unemployment Rates by Age

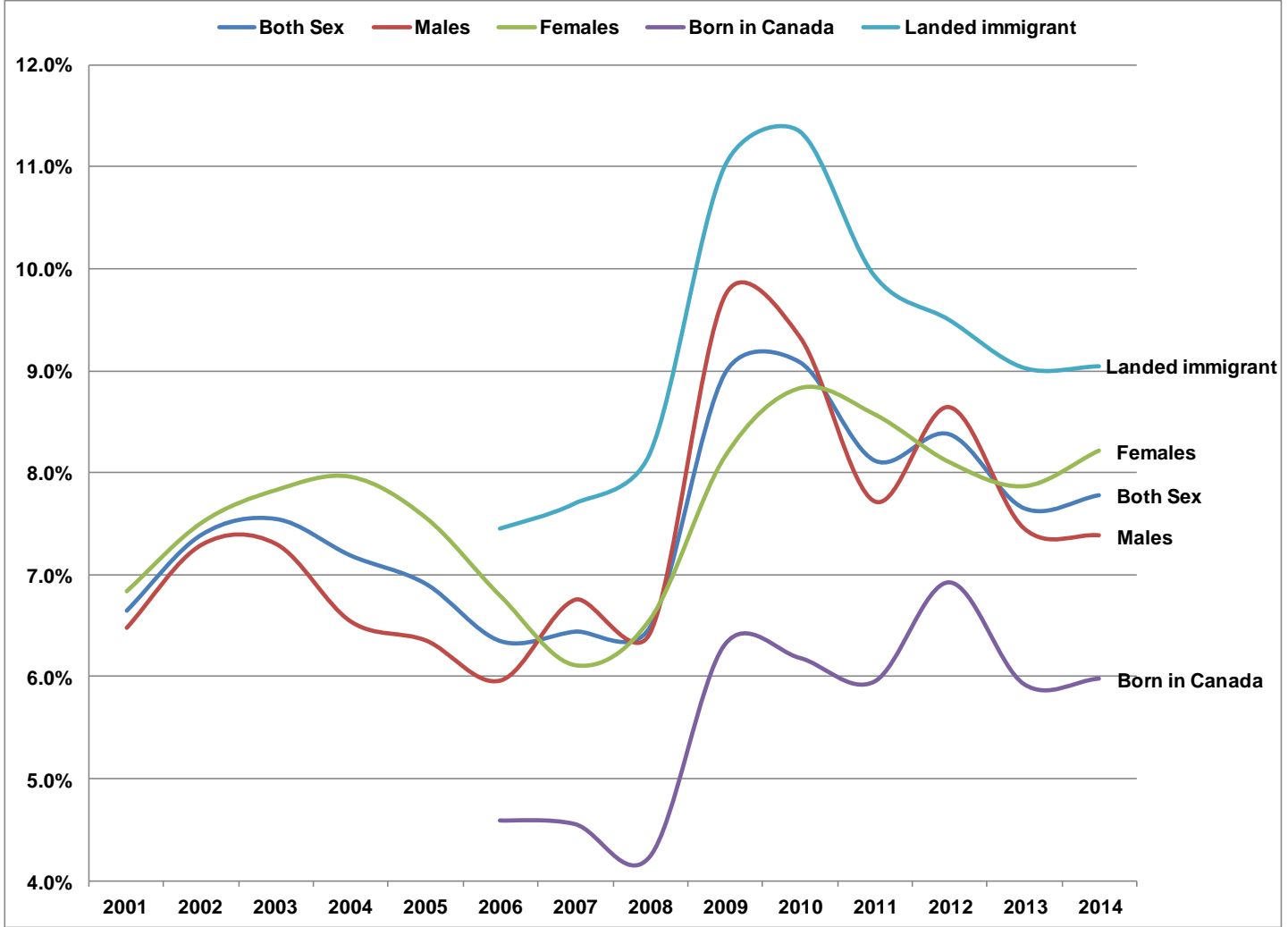
## City of Toronto



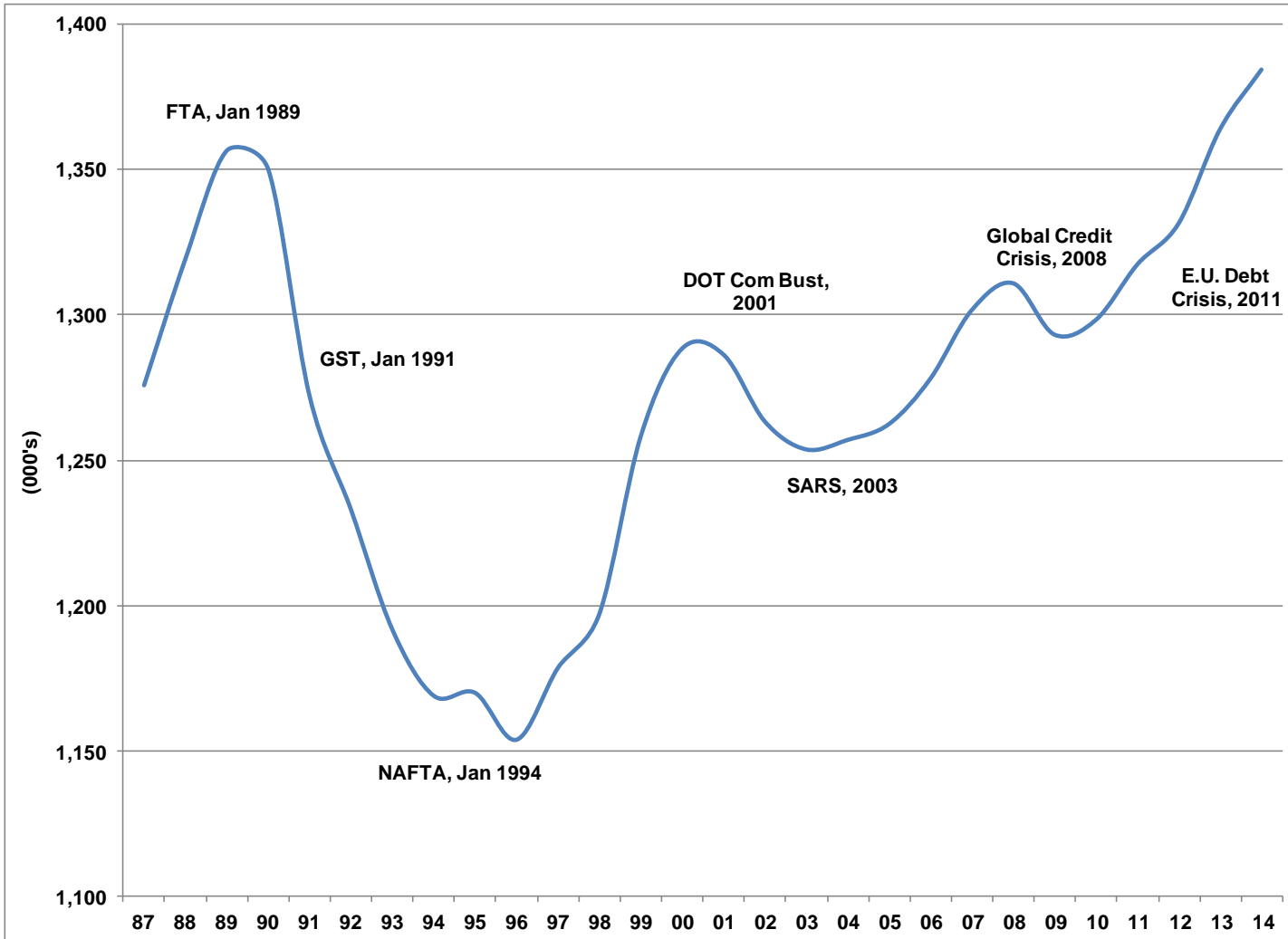
# Unemployment Rates - Monthly



# Unemployment Rates Aged 25-64 City of Toronto



# Jobs in the City of Toronto Establishment Survey

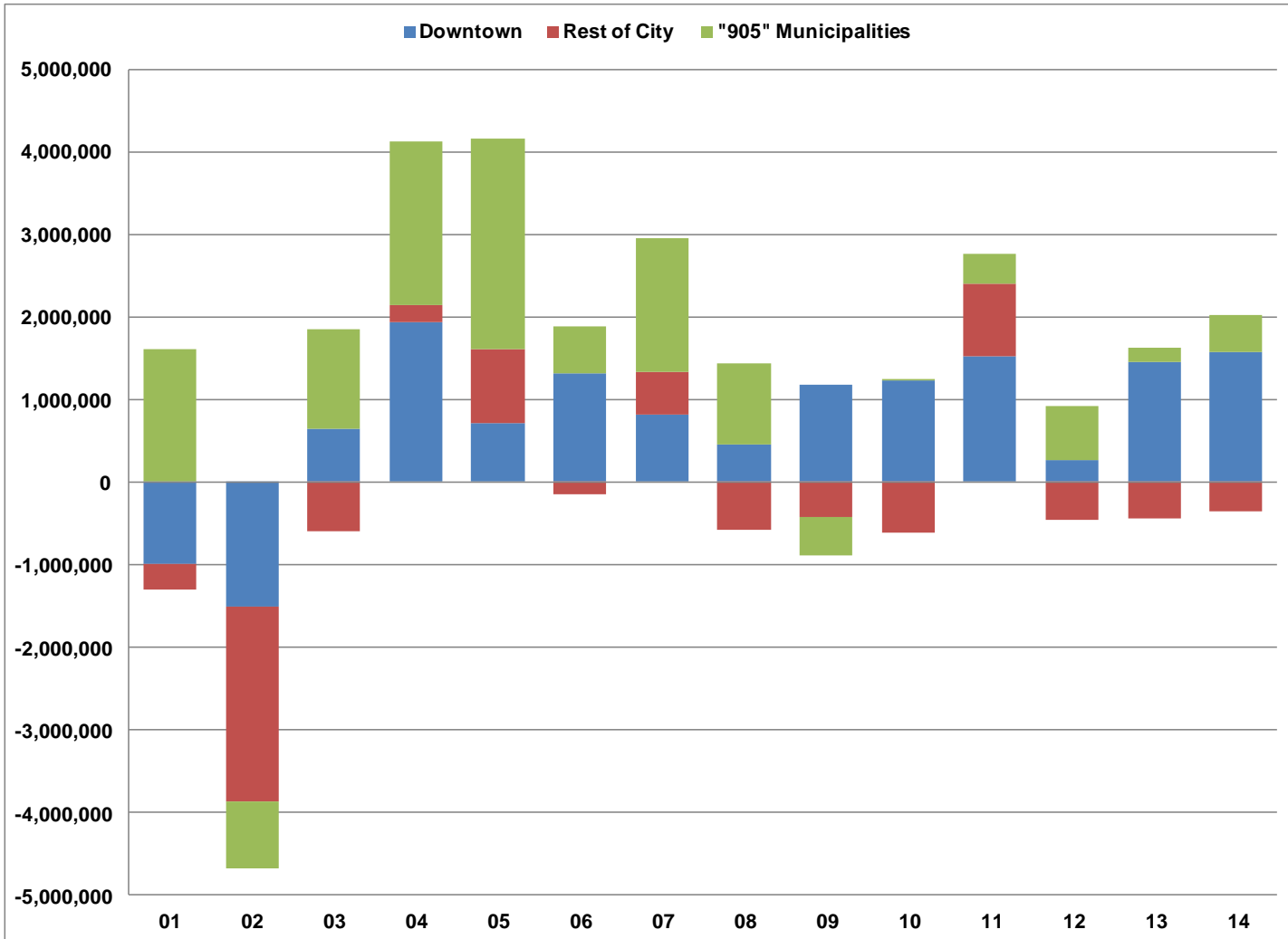


# Jobs in the City of Toronto

## Establishment Survey

|                         | 2013             | 2014             | Change        | % Chg        |
|-------------------------|------------------|------------------|---------------|--------------|
| <b>Office</b>           | <b>656,680</b>   | <b>662,970</b>   | <b>6,290</b>  | <b>1.0%</b>  |
| <b>Manuf &amp; Whse</b> | <b>126,190</b>   | <b>124,610</b>   | <b>-1,580</b> | <b>-1.3%</b> |
| <b>Institutional</b>    | <b>222,720</b>   | <b>233,730</b>   | <b>11,010</b> | <b>4.9%</b>  |
| <b>Retail</b>           | <b>146,810</b>   | <b>144,540</b>   | <b>-2,270</b> | <b>-1.5%</b> |
| <b>Service</b>          | <b>164,510</b>   | <b>170,630</b>   | <b>6,120</b>  | <b>3.7%</b>  |
| <b>Other</b>            | <b>46,640</b>    | <b>47,920</b>    | <b>1,280</b>  | <b>2.7%</b>  |
| <b>All-Sector Total</b> | <b>1,363,550</b> | <b>1,384,400</b> | <b>20,850</b> | <b>1.5%</b>  |

# Annual Change in Occupied Office Space Toronto Region (square feet)



# Classification of Non-Energy Export Components

| Components that have   | Non-Energy Export Components                  | U.S. Market Share | Likely to Lead the Recovery |
|--|---|-------------------|-----------------------------|
| ...grown in line with or above their respective U.S. benchmarks    | Commercial services                           | 12.4              | X                           |
|  | Intermediate metal products                   | 10.1              | X                           |
|  | Building and packaging materials              | 4.8               | X                           |
|  | Aircraft, aircraft engines and aircraft parts | 3.5               | X                           |
|  | Plastic and rubber products                   | 3.1               | X                           |
|  | Pharmaceutical and medical products           | 1.5               | X                           |
|  | Logs, pulpwood and other forestry products    | 0.2               | X                           |
| ... under performed compared with their respective U.S. benchmarks | Industrial machinery, equipment and parts     | 6.3               | X                           |
|  | Communications and audio and video equipment  | 1.3               | X                           |
|  | Fabricated metal products                     | 0.9               | X                           |
|  | Computer and computer peripheral equip.       | 0.5               | X                           |
|  | Non-metallic minerals products                | 0.4               | X                           |
|  | General government services                   | 0.3               | X                           |