

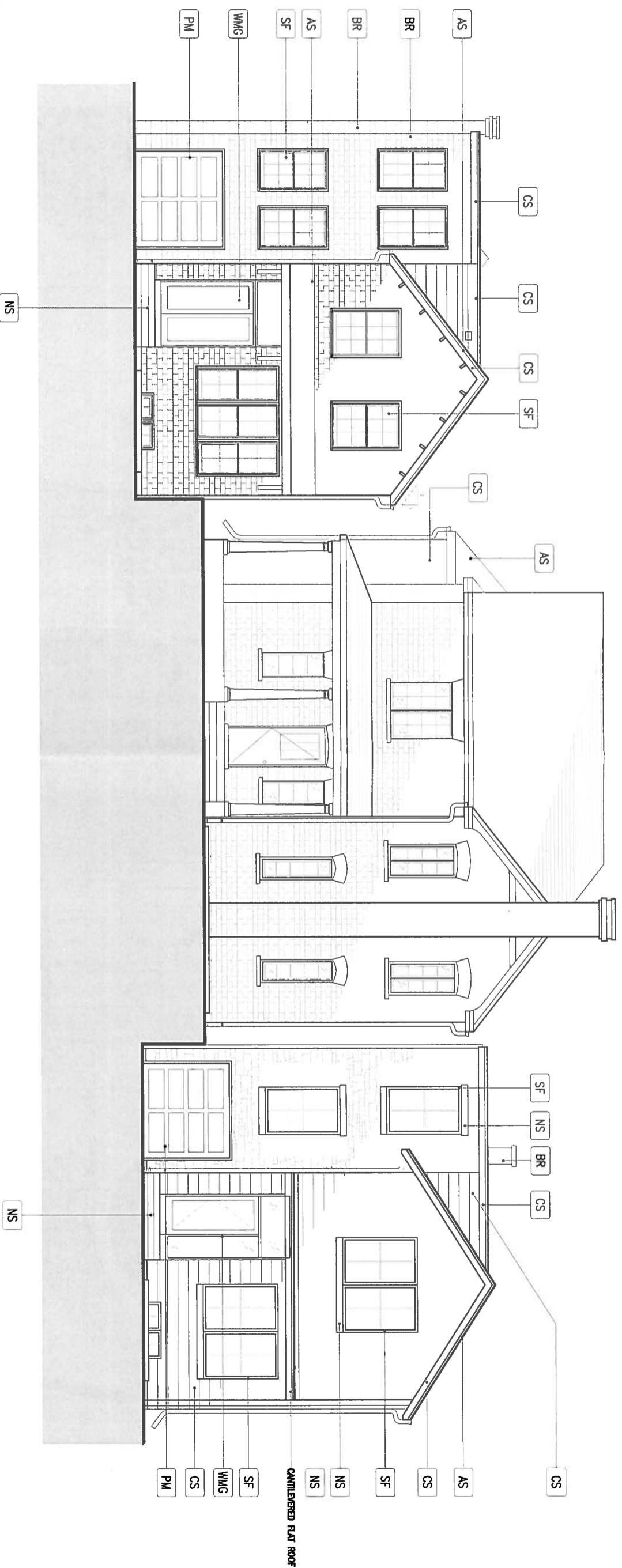


262 BESSBOROUGH DRIVE
TORONTO, ONTARIO

LANDSCAPE PLAN - Revised
SCALE 1 : 250
AUGUST 13, 2014

E. B. A.

ERA Architects Inc. 10 St. Mary Street, Suite 801, Toronto, ON
Canada, M4Y 1P9 T: (416) 952-4497 W: www.eraonline.ca



LEGEND	
AS	ASPHALT SHINGLES
BR	BRICK (GREY)
CS	COMPOSITE SIDING (CEMENT BASED)
NS	NATURAL STONE
SF	STEEL FRAME WINDOWS
PM	PAINTED METAL
WMG	WOOD DOOR WITH METAL FRAME AND GLASS

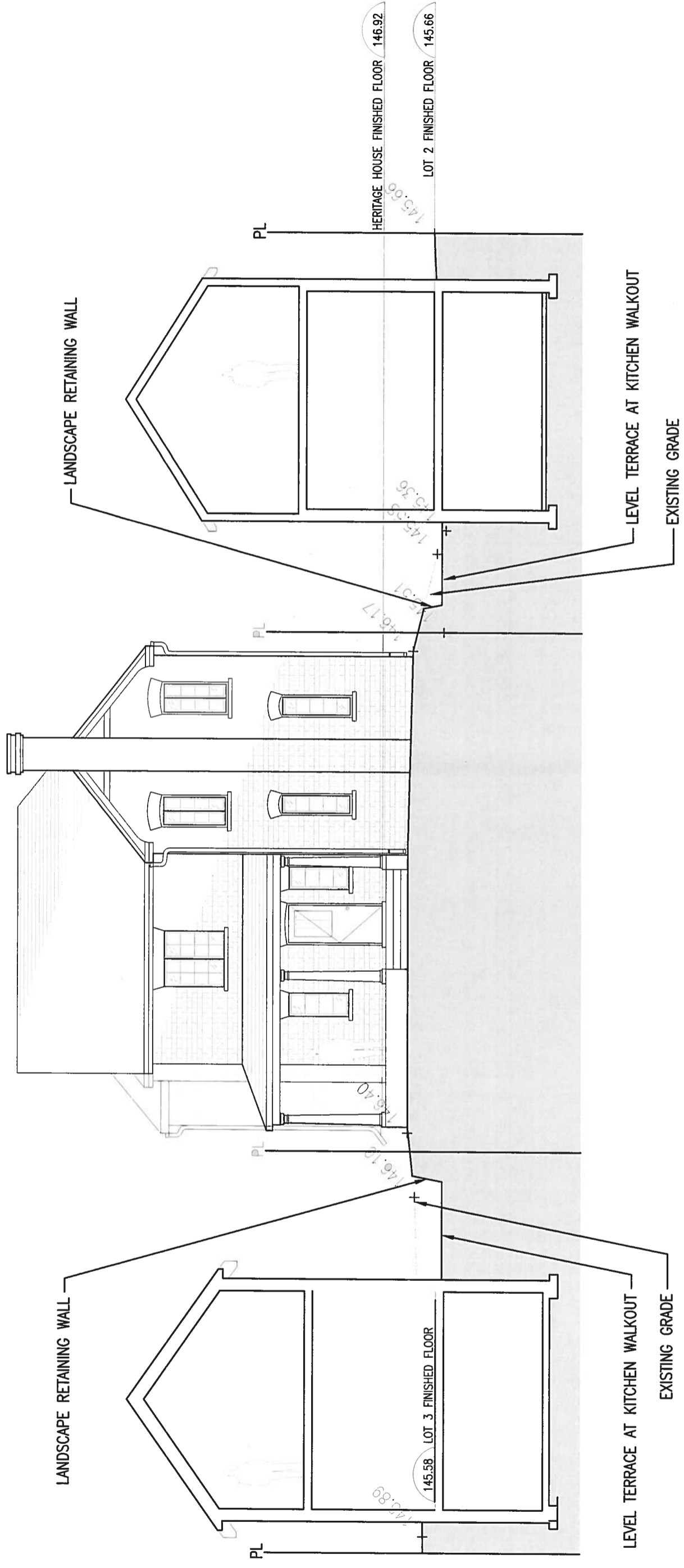
262 BESSBOROUGH DRIVE - PROPOSED STREETSCAPE ELEVATION WITH MATERIALS
TORONTO, ONTARIO

A 102

SCALE 1:100
16th DECEMBER, 2014

ERA

ERA Architects Inc., 10 St. Mary Street, Suite 801, Toronto, ON
Canada, M4Y 1P9 T: (416) 963-4487 W: www.eraarch.ca



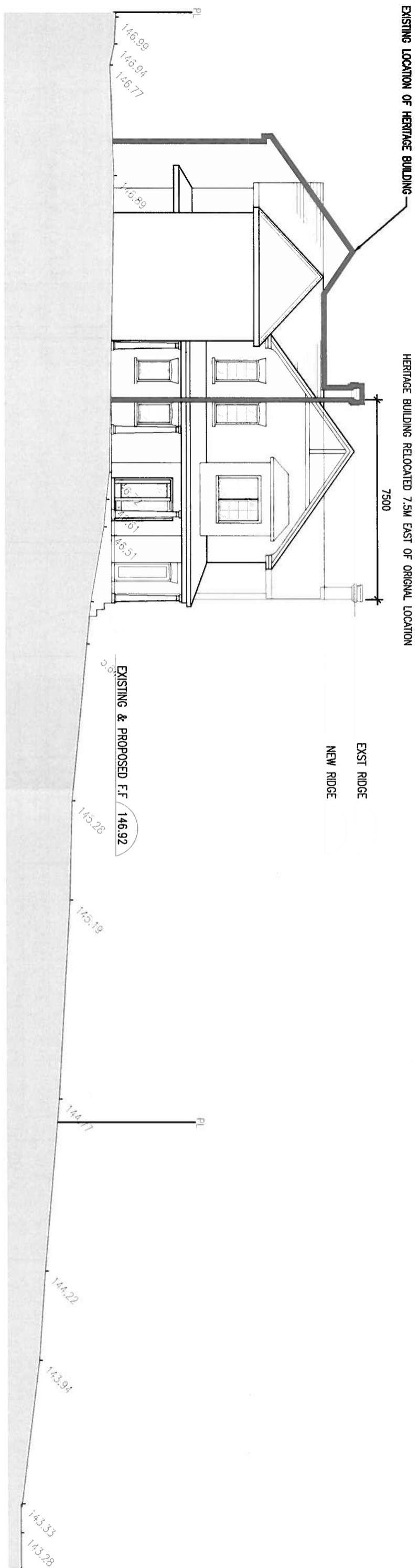
262 BESSBOROUGH DRIVE - SECTION THROUGH LOTS 1-3 NORTH / SOUTH
 TORONTO, ONTARIO

A 104

SCALE NTS
 16th DECEMBER, 2014

ERA

ERA Architects Inc. 10 St. Mary Street, Suite 801, Toronto, ON
 Canada, M4Y 1P9 T: (416) 963-4487 W: www.eraarch.com



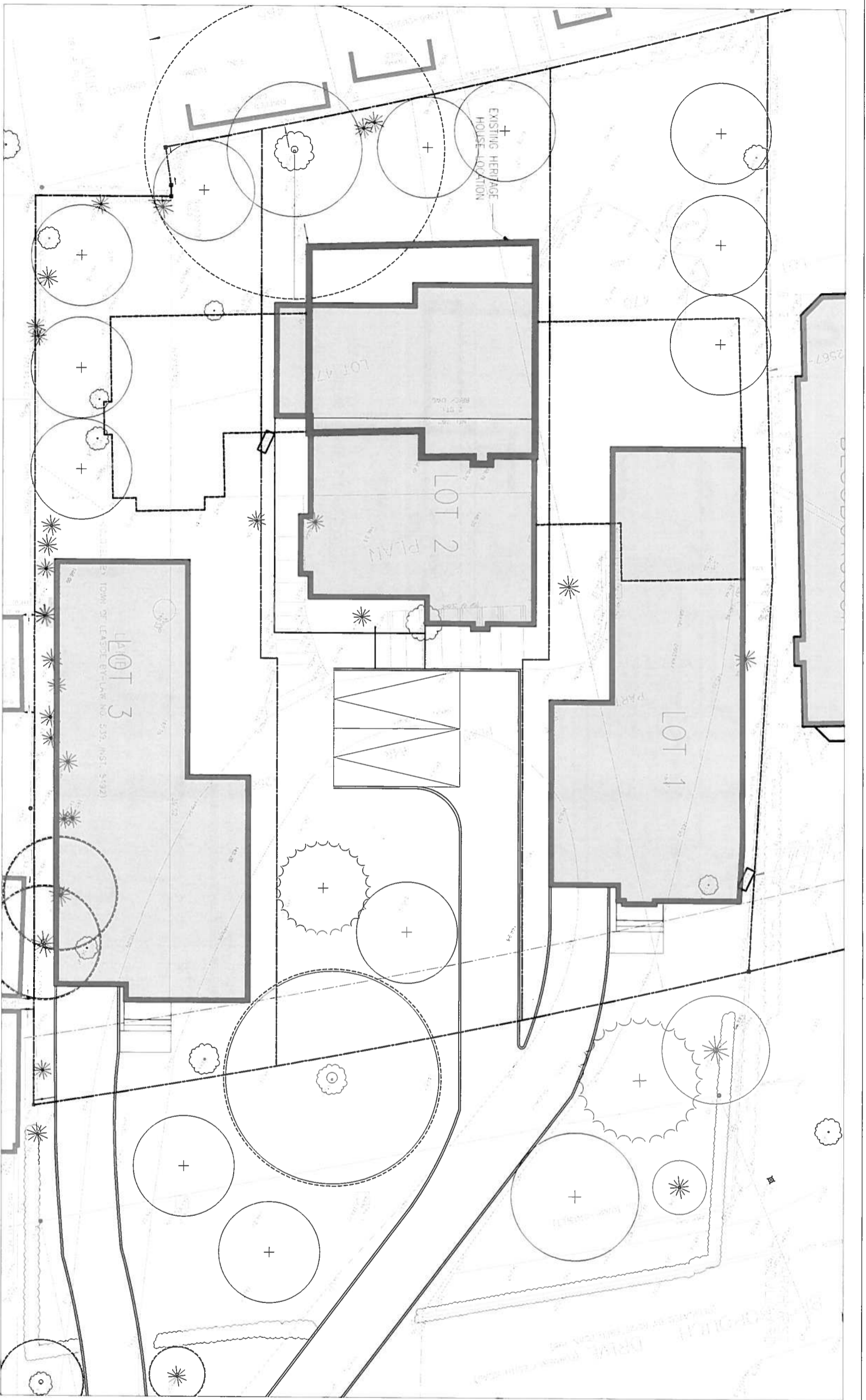
A 103

262 BESSBOROUGH DRIVE - SECTION THROUGH LOT 2
 TORONTO, ONTARIO

SCALE NTS
 10th DECEMBER, 2014

ERA

ERA Architects Inc., 10 St. Mary Street, Suite 801, Toronto, ON
 Canada, M4Y 1P9 T: (416) 963-4487 W: www.eraarchitects.com



 HERITAGE HOUSE

SURVEY INFORMATION TAKEN FROM SURVEYING PREPARED BY GUIDO PAPA SURVEY LTD.

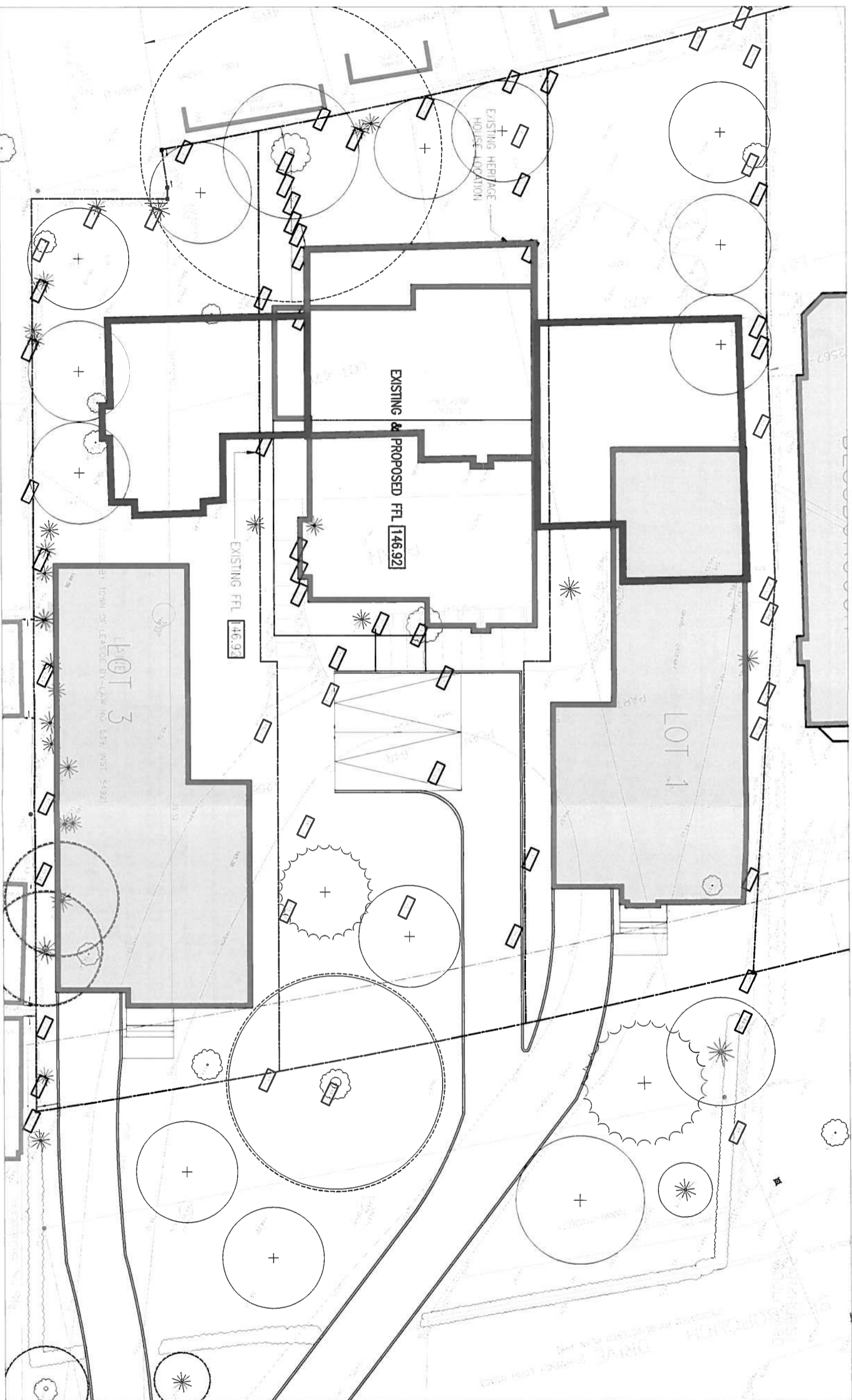
262 BESSBOROUGH DRIVE - SITE PLAN
TORONTO, ONTARIO

SCALE 1:100
10th DECEMBER, 2014

 A000

E R A

E.R.A. Architects Inc., 10 St. Mary Street, Suite 801, Toronto, ON Canada, M4Y 1P9 T: (416) 863-4497 W: www.eraarch.ca



LEGEND

EXISTING GRADES RETAINED TO MAINTAIN THE EXISTING RELATIONSHIP BETWEEN GRADE AND THE ENTRANCE TO THE ORIGINAL HERITAGE HOUSE

HERITAGE HOUSE

ADDITIONS TO BE DEMOLISHED

SURVEY INFORMATION TAKEN FROM SURVEYING PREPARED BY GUIDO PAPA SURVEY LTD.

262 BESSBOROUGH DRIVE - PRELIMINARY GRADING PLAN
TORONTO, ONTARIO

A 100

SCALE 1:100
10th DECEMBER, 2014

ERA

ERA Architects Inc., 10 St. Mary Street, Suite 901, Toronto, ON Canada, M4Y 1P9 T: (416) 963-4497 W: www.eraarch.ca



