



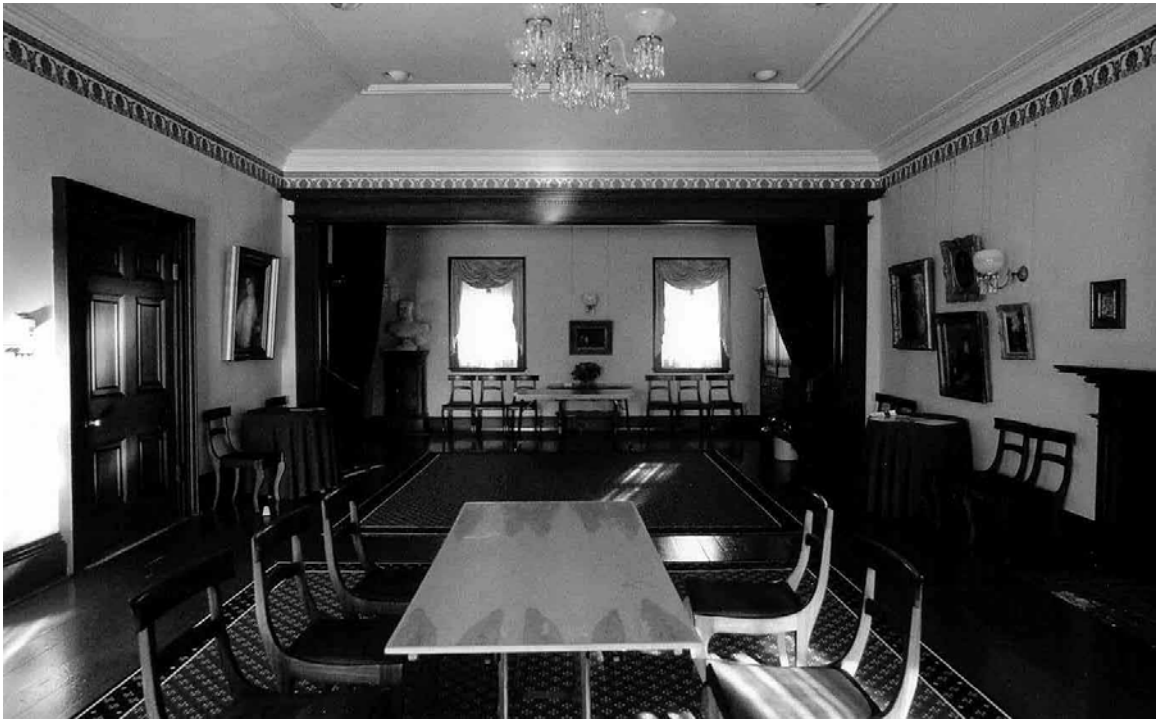
29. Interior Photographs, The Grange, 2005: showing the first (ground) floor Drawing Room, with the plasterwork and wood window trim (above), with the fireplace mantel (below) (Heritage Easement Agreement)



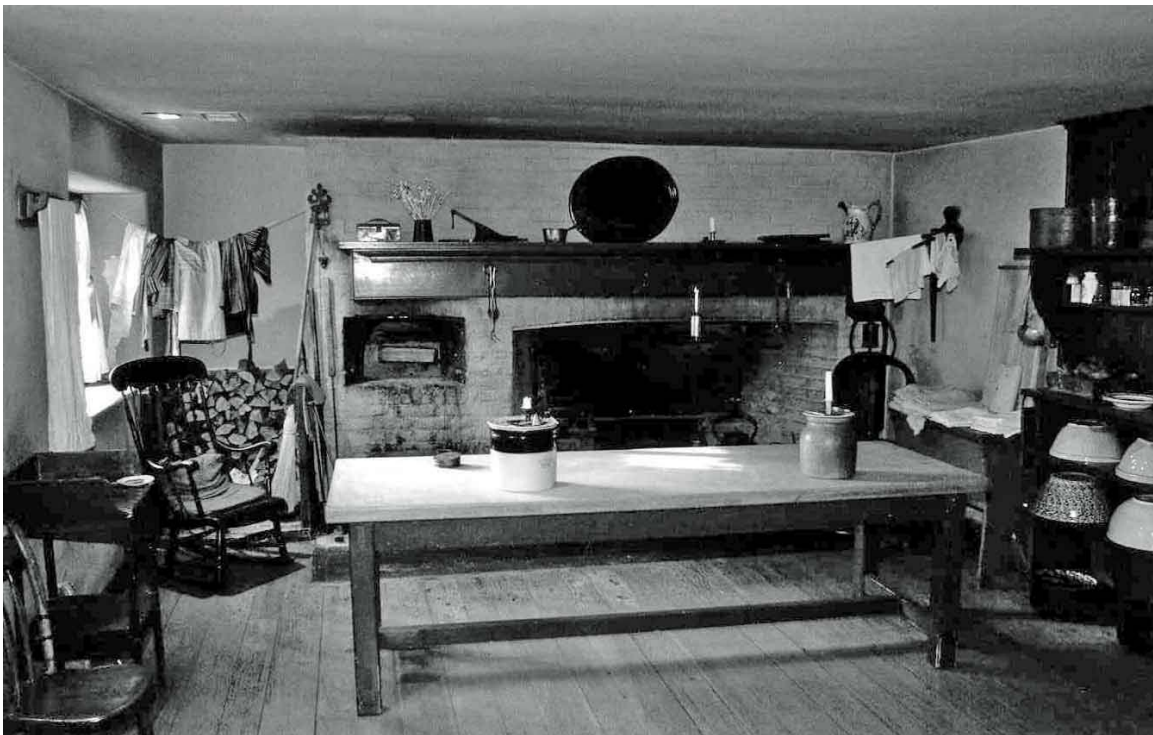
30. Interior Photographs, The Grange, 2005: showing the first (ground) floor Breakfast Parlour with the plasterwork and door and window trim (above), with the fireplace mantel (below) (Heritage Easement Agreement)



31. Interior Photographs, The Grange, 2005: showing the two bedrooms on the second floor with the plasterwork, the wood trim and the fireplace mantels (Heritage Easement Agreement)



32. Interior Photographs, The Grange, 2005: showing the Music Room on the second floor with the plasterwork, the paneled wood door (below), the door and window trim, and the fireplace mantel (Heritage Easement Agreement)



33. Interior Photographs, The Grange, 2005: showing the basement Kitchen with the two fireplaces, including the one with the bake oven (below) (Heritage Easement Agreement)



34. Interior Photographs, The Grange, 2005: showing the Library in the west wing (1885) with the ceiling mouldings, the wood paneling, the paneled wood doors, the door and window trim, and the fireplace with the mantel and the tiled surrounding depicting scenes from Shakespeare's plays (Heritage Easement Agreement)



35. Current Photographs, The Grange and Grange Park, 2015: showing the south elevation of The Grange with one of the commemorative plaques (above) and the location and setback of the west wings dating to the 1840s (centre) and 1885 (left) (Heritage Preservation Services)



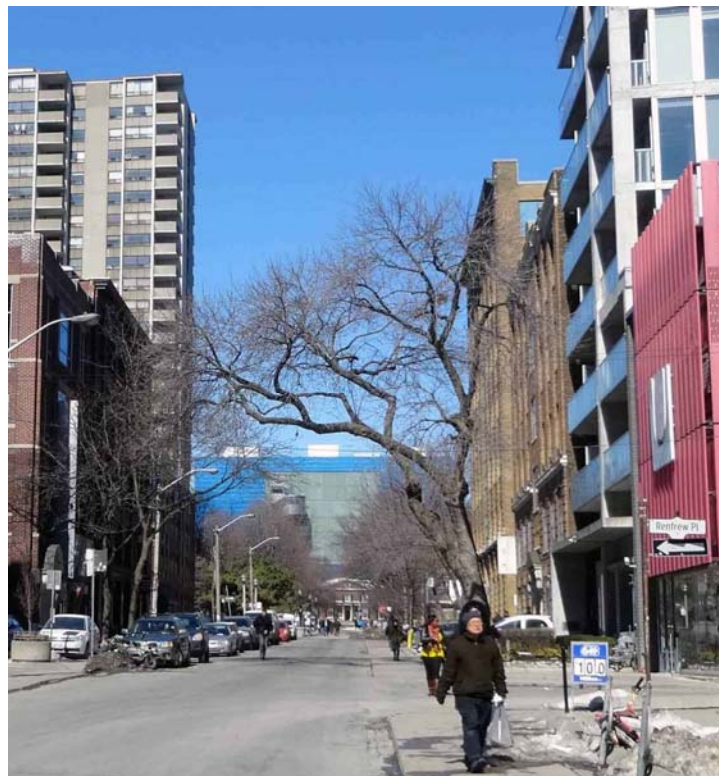
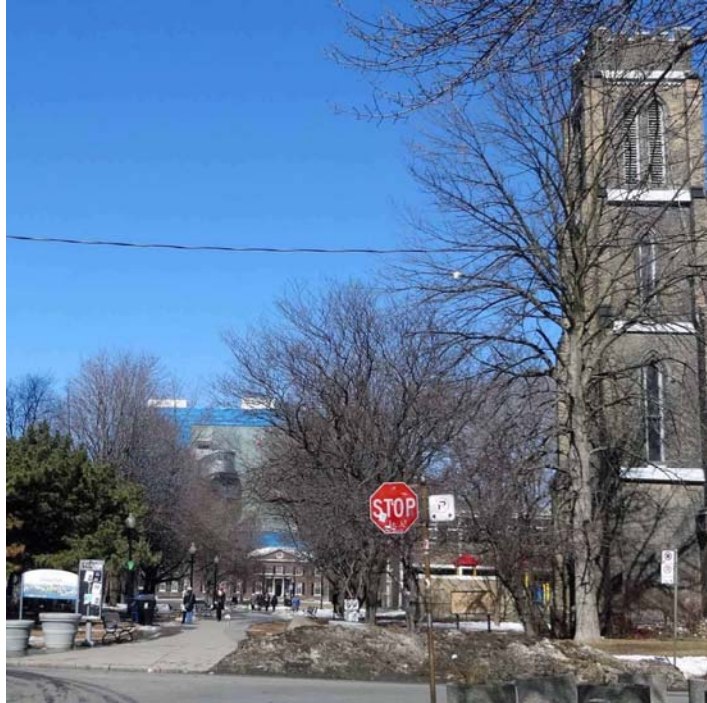
36. Current Photographs, The Grange, 2015: showing the west wings of The Grange dating to the 1840s (right) and 1885 (left) (above), and the raised setting of The Grange adjoining the semi-elliptical-shaped driveway (below) (Heritage Preservation Services)



37. Current Photographs, Grange Park, 2015: looking northeast from Beverley Street and showing the raised position of The Grange on terraces overlooking the grassed open space outlined by the semi-elliptical-shaped driveway (above), and looking south from the driveway along the central path toward John Street (below) (Heritage Preservation Services)



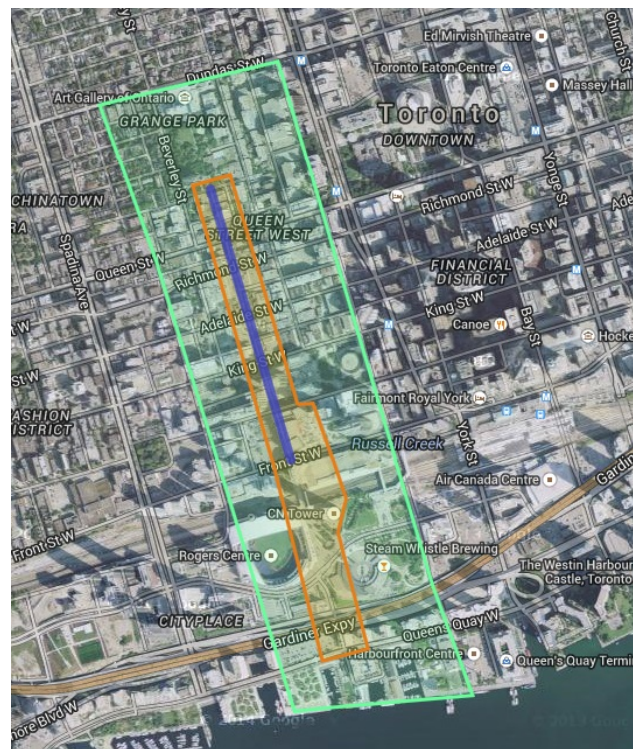
38. Current Photographs, Grange Park, 2015: looking northwest from the south entrance to the park toward Beverley Street and showing the grove of trees in the southwest corner of the site (including the mature horse chestnuts) (above), and looking north from the south entrance to the park along the axial path to The Grange (below) (Heritage Preservation Services, 2015)



39. Current Photographs, The Grange and Grange Park, 2015: looking north across the park to the Grange from Grange Road (with St. George's Church tower, above) and from north of Queen Street West (below) (Heritage Preservation Services, 2015)



40. Aerial Photograph, The Grange and Grange Park, 2014: showing the setting of The Grange at the north end of Grange Park with the semi-elliptical-shaped drive, the mixture of open and landscaped space, and the axial view corridor between The Grange and John Street ([www.bing.com/maps](http://www.bing.com/maps))



41. Map, John Street Cultural Corridor, 2012: showing the area identified with the alignment of important cultural institutions along John Street between Toronto's waterfront and the Art Gallery of Ontario (including The Grange and Grange Park) (<http://www1.toronto.ca/wps/portal/>)