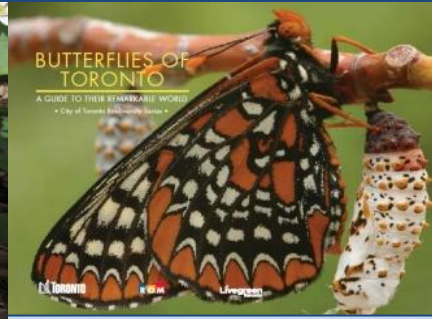


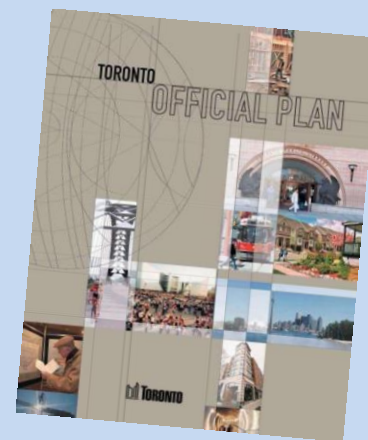
Official Plan Review

Environmental Policies and Environmentally Significant Areas





Background – Official Plan Review

- The *Planning Act* requires municipalities to review their Official Plans every 5 years
- 2011 The City commenced the Plan review. Council directed that it be undertaken by thematic areas.
- 2013-2014 Council adopted 3 OP Amendments based on reviews of the 4 thematic areas in the statutory phase



Official Plan 5 Year Review

Policy Area	Statutory Phase	Council Approval	Status
Transportation (not including transit)	Yes	Yes	Largely In-Force
Heritage	Yes	Yes	OMB appeals largely settled
Employment Areas	Yes	Yes	Appealed to OMB
Housing and section 37	No	Yes	In effect
 Environmentally Significant Areas	No	Proposed ESA designations endorsed for consultation by PGM	Initial consultation concluded
 Environment	No	Draft policies endorsed for consultation	Initial consultation concluded
Greenbelt Plan	Yes	Pending	Proposed policies will be brought forward to Sept PGM
Urban Design	No	Policy Directions endorsed for consultation	Initial consultation concluded

Environmental Policies and ESAs

- August 2014 PGMC received proposed OPA to designate 68 new ESAs and expand 14 existing ESAs and directed staff to consult with the public
- August 2014 Council received draft environmental policy revisions and directed staff to consult with the public
- This report
 - describes feedback on the proposed ESA designations and refinements to the draft environmental policies based on what we heard
 - recommends consultation on ESA's and proposed policies.



What We Heard



- Committee directed staff to consult in Q4 2014 with stakeholders & the public regarding proposed ESA designations and draft revisions to environmental policies.

Consultations included:

- Meetings with City Divisions/Agencies
- 5 public open houses
- Roundtable on Environment
- Roundtable on Climate Change and Resiliency



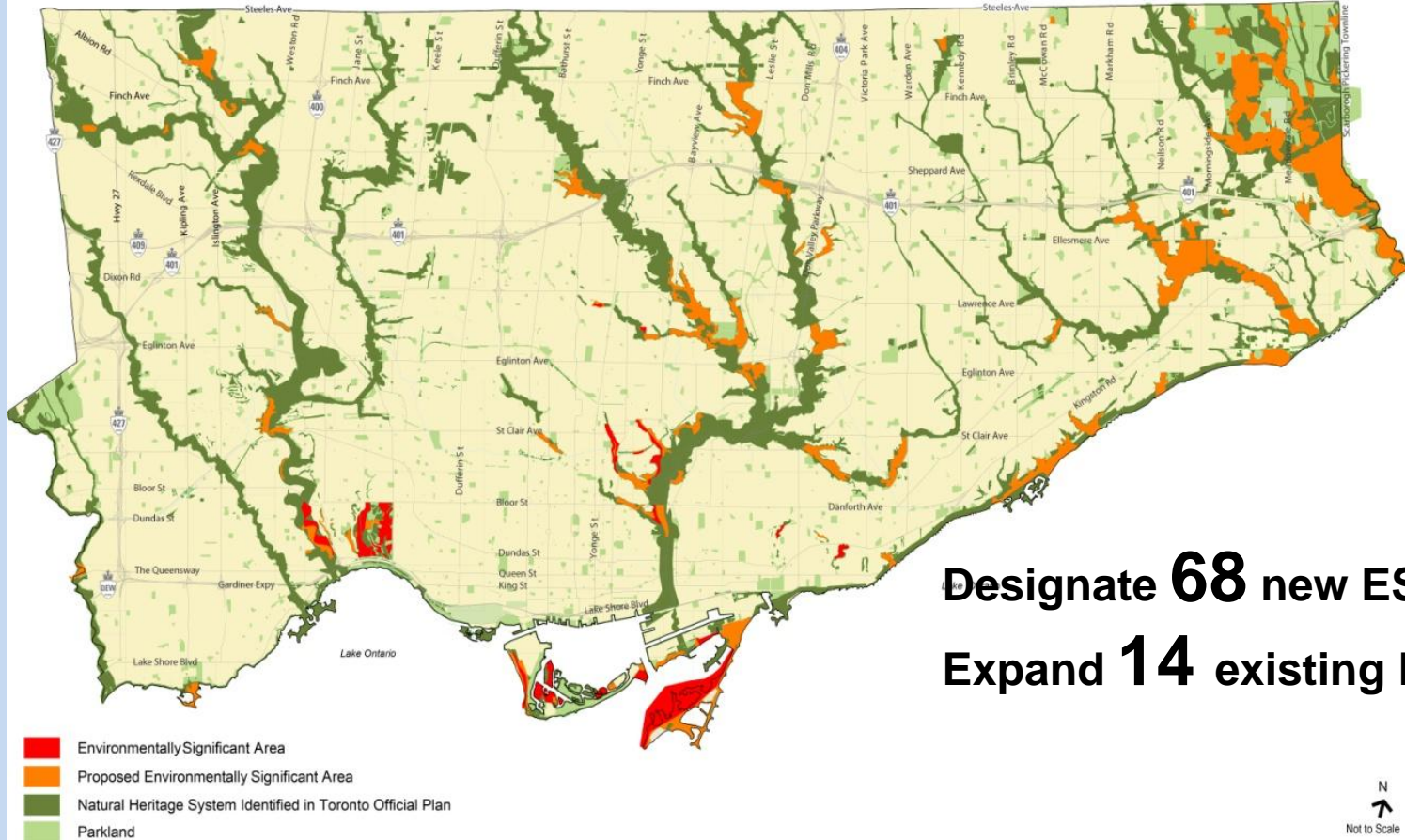


What We Heard



- Strong support for designating 68 new ESAs and expanding 14 existing ESAs
- Broad support for the draft changes to the natural heritage policies and requests to further strengthen the policies
- Continue to raise the bar on requirements for new development to incorporate measures that will improve resiliency

Environmentally Significant Areas



Designate **68** new ESAs
Expand **14** existing ESAs

Policy Refinements – Natural Environment

- Policy revisions to address objectives in PPS to protect water and provincially significant areas and recognize Rouge National Urban Park
- Policy revisions to clarify when site alteration is permitted in ESAs and how impacts of any required infrastructure will be minimized
- Text revisions to emphasize significance of the natural heritage system, clarify terms and add and delete sidebars



ENVIRONMENTALLY SIGNIFICANT AREAS (ESAs)
IN THE CITY OF TORONTO
JUNE 2012

PREPARED FOR TORONTO CITY PLANNING



North-South Environmental Inc.
Specialists in Environmental Land-use Planning



Policy Refinements – Climate Change and Energy

- Strong support for draft policies including new requirements for energy conservation and resiliency
- Policy revisions to include consideration of green infrastructure in Secondary Plans and studies for Centres, Avenues, Regeneration and Institutional Areas





Staff Report

Recommendations

That Council

- endorse the refined environmental policies for consultation in June
- direct staff to prepare a draft OP Amendment in September, with the statutory public meeting to follow in October
- receive the Consultant Summary Report on the consultations