



RE:EX13.15

# Children's Services 2015-2019

## Service Plan: Progress Updates & Aboriginal Child Care Consultation

Aboriginal Affairs Committee

February 2<sup>nd</sup>, 2016

Delivered by Elaine Baxter-Trahair,  
General Manager of Children's Services



# Children's Services Commitment

Children's Services recognizes that Indigenous children and families have unique needs, cultures, languages and histories

We are committed to:

- Identifying and meeting the needs of Indigenous children and families in culturally responsive ways
- Improving access to services and quality of services for Indigenous families in Toronto, in partnership with Indigenous service providers



# Broader Commitments and Priorities



Truth and  
Reconciliation  
Commission of Canada




Government  
of Canada

Gouvernement  
du Canada

Canada 

# The Role of Children's Services



Service System  
Manager

- Provincially legislated
- Planning and managing child care & early years services

Service  
Provider

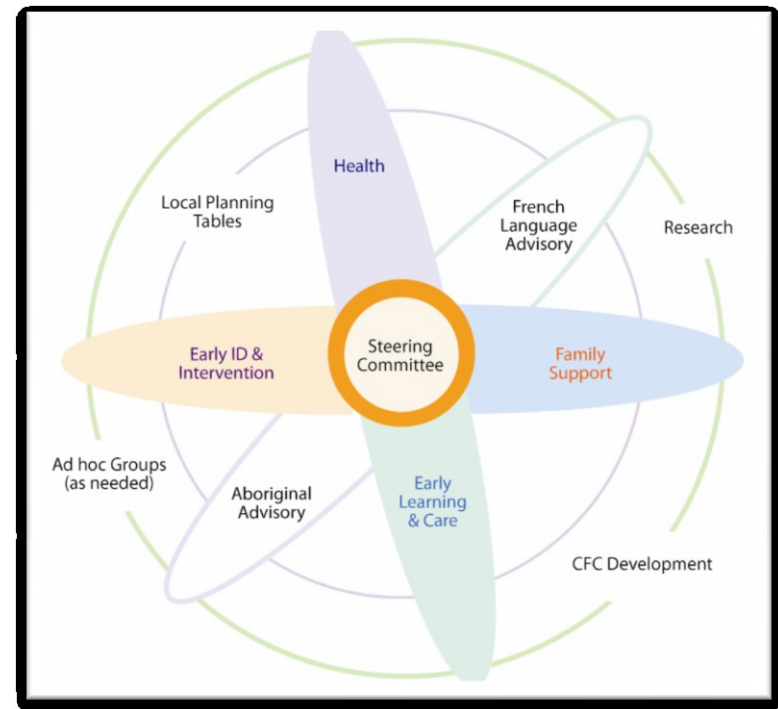
- Directly operate TELCCS
- Special Needs Resourcing

Strategic  
Leader

- Promote positive child outcomes
- Promote healthy communities
- Pursue research & evidence based practices/policy

# Strengthen partnerships with the Aboriginal community

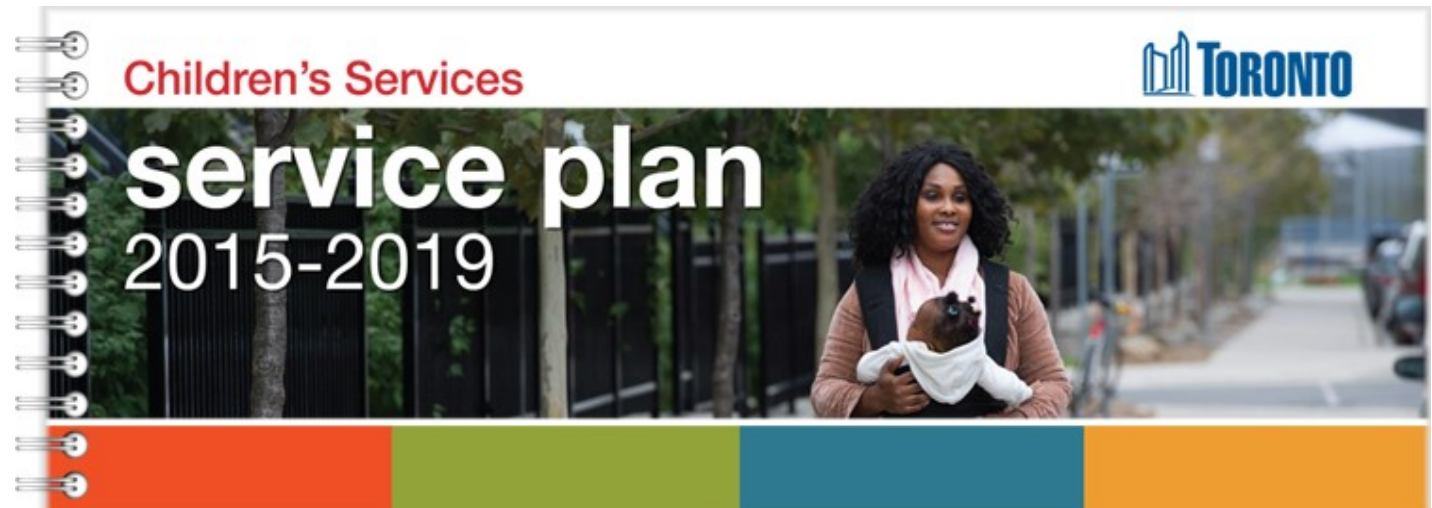
Strengthen partnerships with the Aboriginal community by providing ongoing support to the Aboriginal Advisory and Planning Committee and regular, targeted engagement initiatives



# Strategic Directions

The 2015-2019 Children's Services Service Plan includes Strategic Directions for the next five years:

1. Access to High Quality Child Care
2. Inclusive Support for All Families
3. Engagement, Partnership, and Communication
4. Systems Change
5. Leadership



# Expand Aboriginal cultural competency across the system

Exploring Indigenous Curriculum for Non-indigenous Early Learning Environments



**Keynote Speaker**

Kahontakwas Diane Longboat, M.Ed  
Speaker of the Governing Council of Soul of the Mother

Kahontakwas Diane Longboat is a member of the Məkwə' Nation.

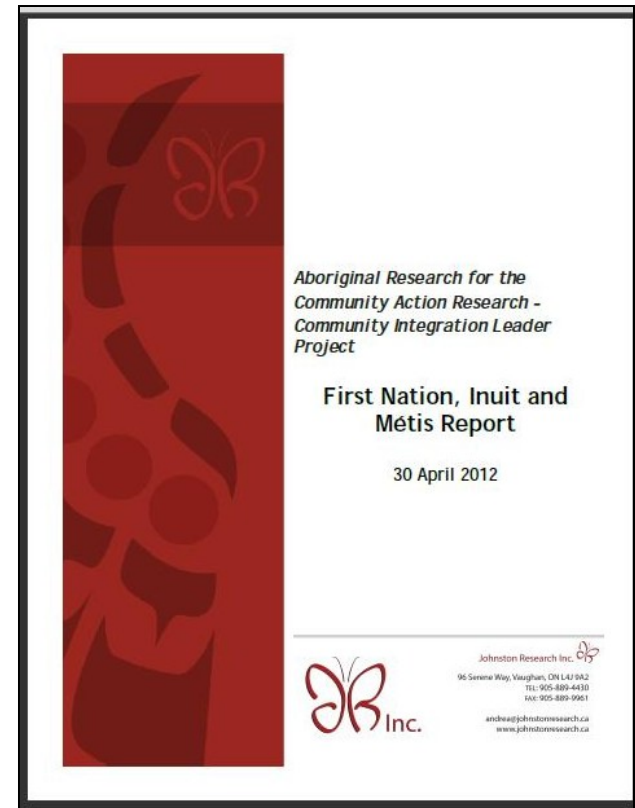


For  
Indigenous  
**Monique Gray Smith – Little  
Drum Consulting**



# Increase the number of culturally-specific spaces

Work with the Aboriginal community to increase the number of culturally-specific spaces for Aboriginal children through a variety of approaches.







# Work to date

- Voluntary Self ID
- Viability of existing Aboriginal child care
- Increased support in navigating the subsidy system
- Child Care Demand Study



# Increasing Culturally Specific Child Care

1. Support the development of new culturally specific child care spaces
2. Explore other opportunities (ie. Home Child Care)