

THE CANADIAN BOW TIE

Open Government Tour 2014



CAR DRIVER



Open Data

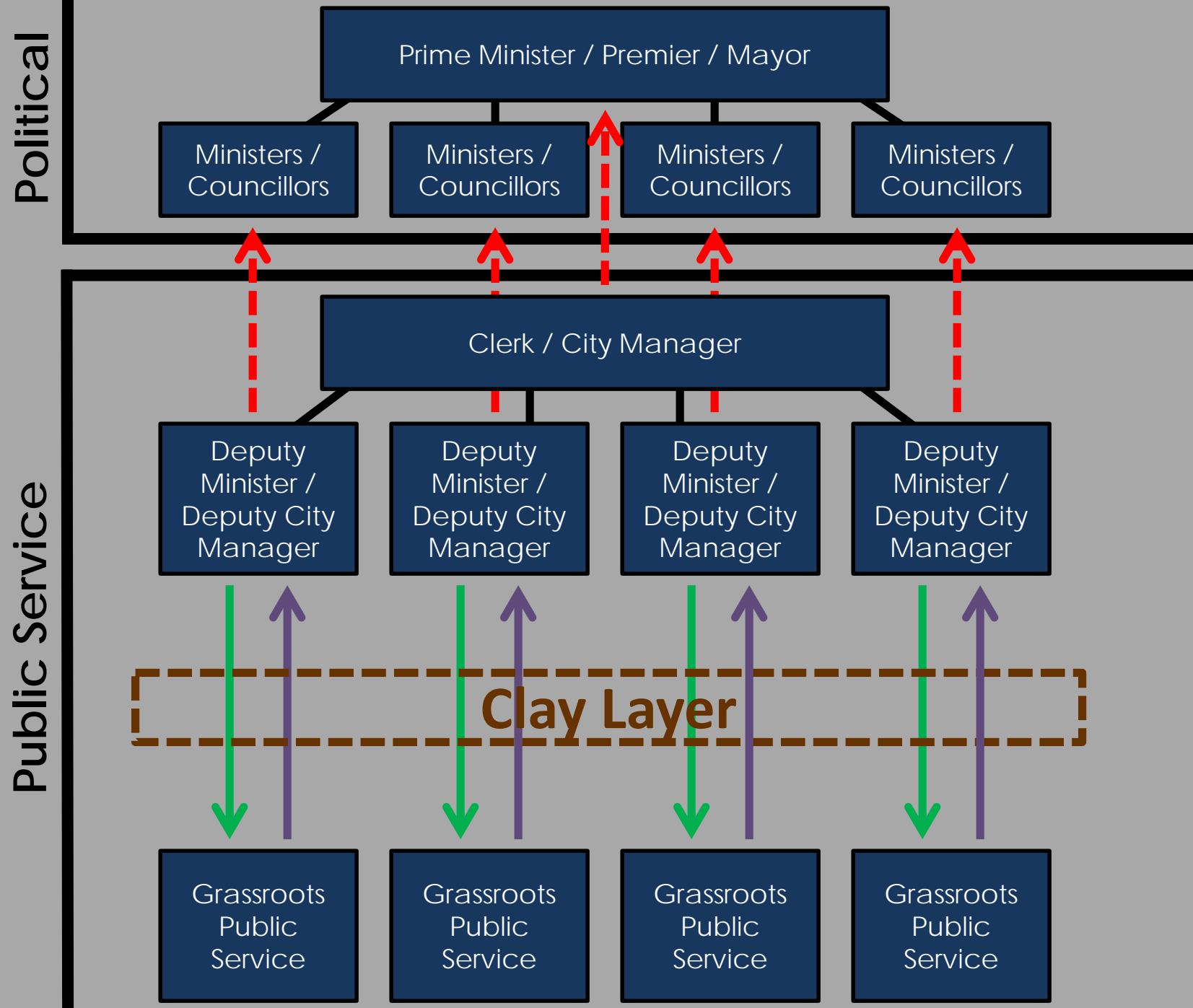
The technology that will
change government

Open Government

The government's willingness
to use that technology

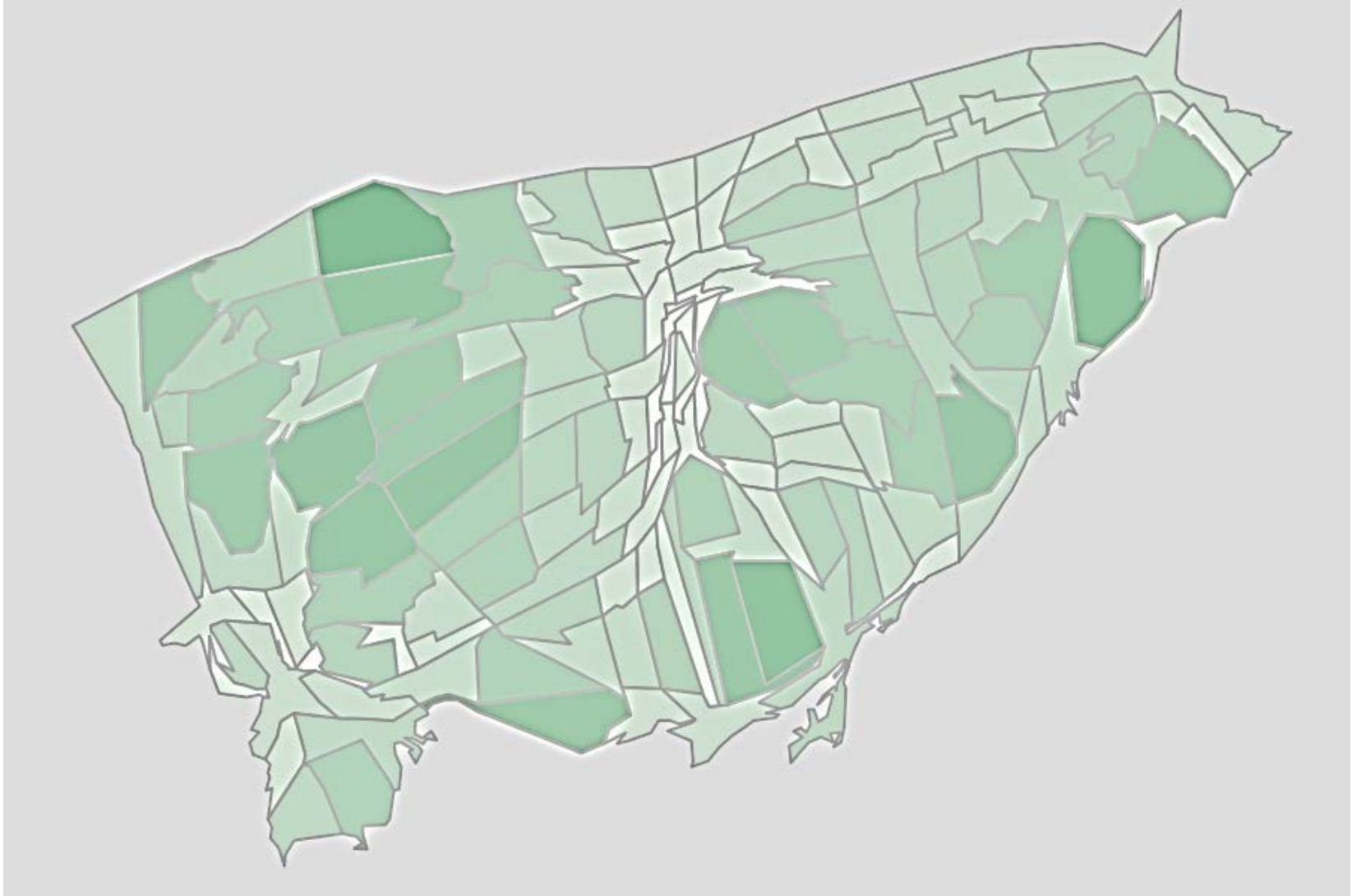
Major barrier to government innovation and progress: *The Clay Layer*

(slight variations do apply at the Municipal level)



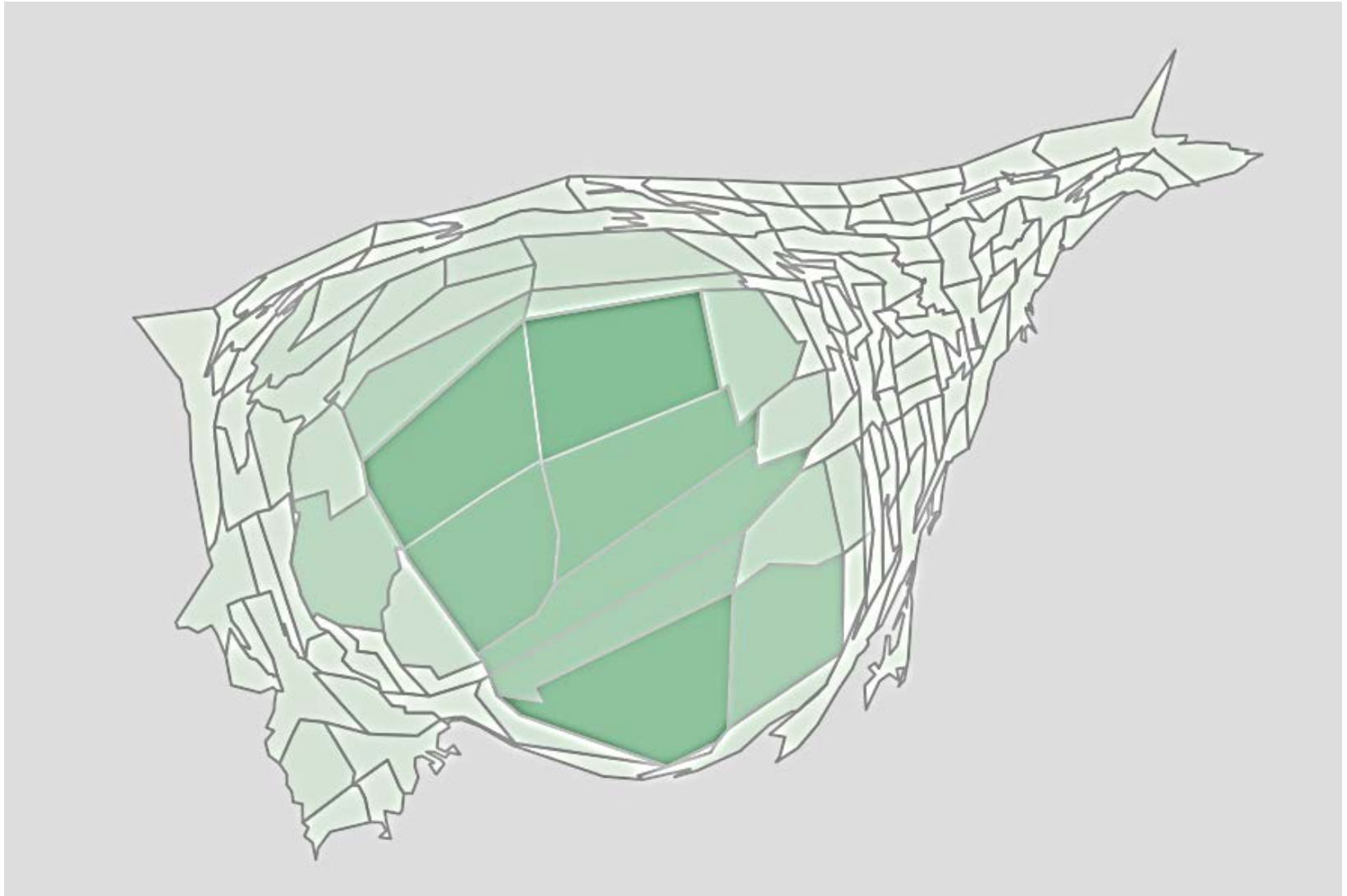
Richard Hydomako Toronto Cartogram

Social Assistance Recipients



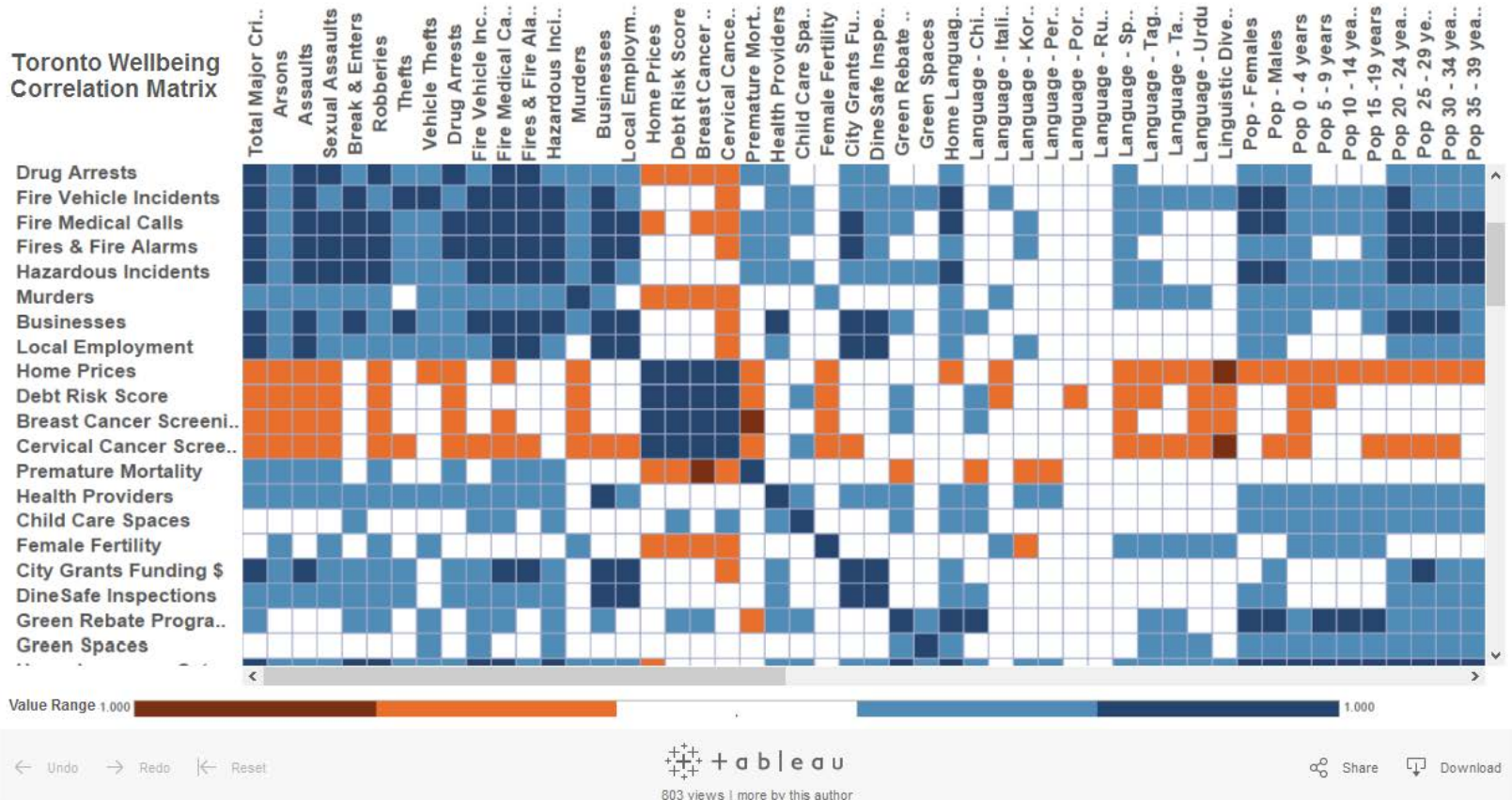
Richard Hydromako Toronto Cartogram

Language: Portuguese



David Dou: Matrix

Toronto Wellbeing Correlation Matrix



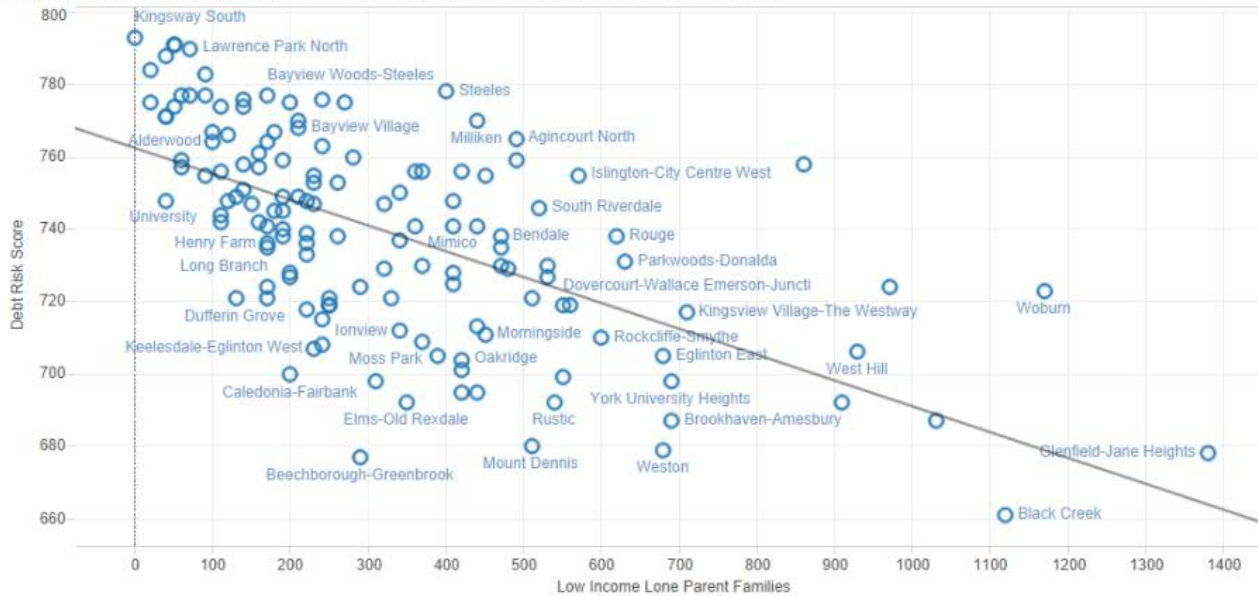
The things I noticed in this visualizations are:

- 1) communities having higher crime rates is also has lower home price, debt risk score and is less inclined to go to cancer screenings.
- 3) Neighborhood that have more city grant funding have more local employment
- 4) Neighborhood with age groups between 20-40 between have higher levels of crime
- 5) Neighborhoods with high level of traffic collisions also have high levels of vehicle theft.
- 6) Neighborhoods with more Hispanic people tend to have more high sexual assault
- 7) Neighborhoods with more people between 20-40 tend to have more local employment and business
- 8) Neighborhoods with lots of social housing units tend to experience more assault, robberies, drug arrests and fire medical calls

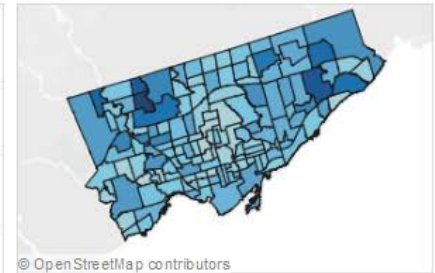
David Dou: Scatter Plot

Avg. Debt Score vs Number of Low Income Parent Families

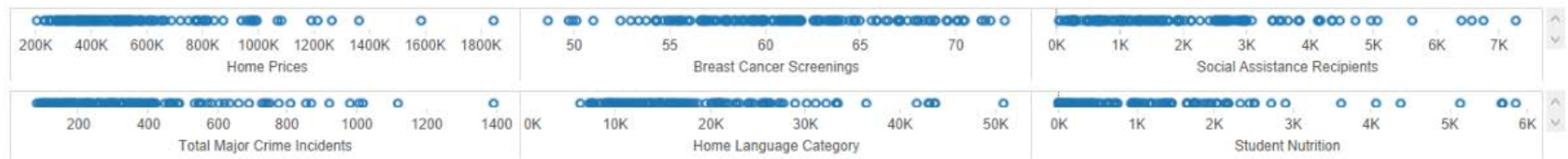
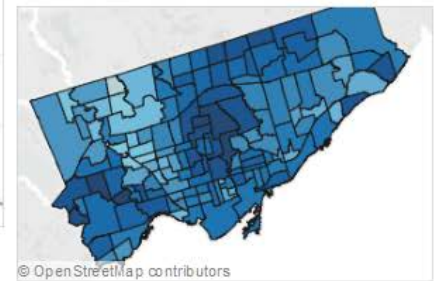
Avg Debt Score vs Number of Low Income Lone Parent Families Scatter Plot



Low Income Lone Parent Map



Debt Risk Score Map



← Undo → Redo ⏪ Reset

+ a b l e a u

339 views | more by this author

🔗 Share 📄 Download

This visualization is made using Wellbeing Toronto data.

"Debt Score" metric is negatively correlated to "Low Income Lone Parent Families" metric. The neighborhoods around Jane/Finch and Rouge Park area have the most low income lone parent families and the lowest debt score. Neighborhoods in the top left corner are associated with above average home prices, higher breast cancer screening rates, low number of people on social assistance, low total crime, low home language category, low student nutrition. Neighborhoods in the bottom right corner are associated with low home prices, low breast cancer screenings, high social assistance recipients, higher than average home language category, higher student nutrition.



We can't control
change.

But one thing we can
control is our response
to change.

Rob Meikle, Chief Information Officer, City of Toronto