

JAPANESE CANADIAN
CULTURAL CENTRE
日系文化会館

RECEIVED
CITY CLERK'S OFFICE
NORTH YORK
CIVIC CENTRE

2016 MAY 18 AM 10 02

May 16, 2016

City Clerk's Office,
5100 Yonge St., Ground Floor,
Toronto, ON M2N 5V7

To Whom It May Concern

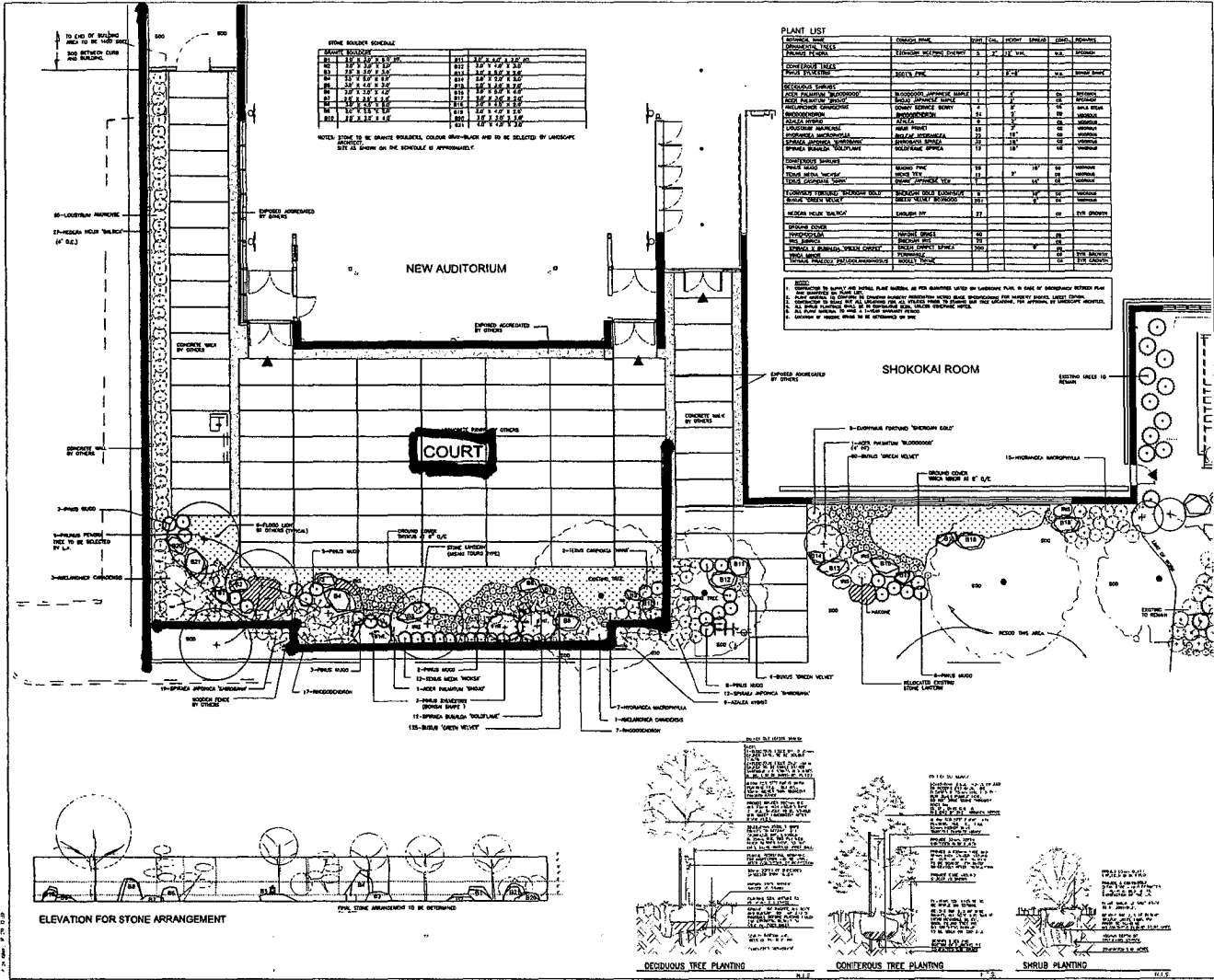
This is to inform you that the Japanese Canadian Cultural Centre is making an application for a Special Occasion Permit in order to run a "Beer Garden" as part of our annual Summer Festival on July 9 from 3pm to 11:30pm.

This will take place in the Kobayashi Garden Court, an approximately 2400 sq foot enclosed outdoor courtyard attached to our cultural centre which is located at 6 Garamond Court. Please find a sketch of this space enclosed.

Thank you very much for your support and cooperation. Please do not hesitate to contact me if you have questions or concerns at 416-441-2345 ex 224.

Respectfully,

James Heron
Executive Director



STONE BANKING SCHEDULE

NO.	TYPE	QTY	UNIT	PRICE	TOTAL
1	12" x 12" x 12" ST.	100	CU YD	1.50	150.00
2	12" x 12" x 12" ST.	100	CU YD	1.50	150.00
3	12" x 12" x 12" ST.	100	CU YD	1.50	150.00
4	12" x 12" x 12" ST.	100	CU YD	1.50	150.00
5	12" x 12" x 12" ST.	100	CU YD	1.50	150.00
6	12" x 12" x 12" ST.	100	CU YD	1.50	150.00
7	12" x 12" x 12" ST.	100	CU YD	1.50	150.00
8	12" x 12" x 12" ST.	100	CU YD	1.50	150.00
9	12" x 12" x 12" ST.	100	CU YD	1.50	150.00
10	12" x 12" x 12" ST.	100	CU YD	1.50	150.00

PLANT LIST

NO.	SYMBOL	PLANT NAME	QTY	UNIT	PRICE	TOTAL
1	1	12" x 12" x 12" ST.	100	CU YD	1.50	150.00
2	2	12" x 12" x 12" ST.	100	CU YD	1.50	150.00
3	3	12" x 12" x 12" ST.	100	CU YD	1.50	150.00
4	4	12" x 12" x 12" ST.	100	CU YD	1.50	150.00
5	5	12" x 12" x 12" ST.	100	CU YD	1.50	150.00
6	6	12" x 12" x 12" ST.	100	CU YD	1.50	150.00
7	7	12" x 12" x 12" ST.	100	CU YD	1.50	150.00
8	8	12" x 12" x 12" ST.	100	CU YD	1.50	150.00
9	9	12" x 12" x 12" ST.	100	CU YD	1.50	150.00
10	10	12" x 12" x 12" ST.	100	CU YD	1.50	150.00

NOTES:

1. ALL PLANTING TO BE DONE BY CONTRACTOR.
2. ALL PLANTING TO BE DONE BY CONTRACTOR.
3. ALL PLANTING TO BE DONE BY CONTRACTOR.
4. ALL PLANTING TO BE DONE BY CONTRACTOR.
5. ALL PLANTING TO BE DONE BY CONTRACTOR.
6. ALL PLANTING TO BE DONE BY CONTRACTOR.
7. ALL PLANTING TO BE DONE BY CONTRACTOR.
8. ALL PLANTING TO BE DONE BY CONTRACTOR.
9. ALL PLANTING TO BE DONE BY CONTRACTOR.
10. ALL PLANTING TO BE DONE BY CONTRACTOR.

LEGEND

NO.	SYMBOL	DESCRIPTION
1	1	12" x 12" x 12" ST.
2	2	12" x 12" x 12" ST.
3	3	12" x 12" x 12" ST.
4	4	12" x 12" x 12" ST.
5	5	12" x 12" x 12" ST.
6	6	12" x 12" x 12" ST.
7	7	12" x 12" x 12" ST.
8	8	12" x 12" x 12" ST.
9	9	12" x 12" x 12" ST.
10	10	12" x 12" x 12" ST.

JAPANESE CANADIAN CULTURAL CENTRE
 Phase 2B
 6 Gerrard Court
 Toronto, Canada

KPMB

COURTYARD LANDSCAPE PLAN

DATE: 1984.11.14
 DRAWN: JPM, R. B. B. J.

L-1