

BALLYCONNOR COURT
CUL-DE-SAC LOCATIONS

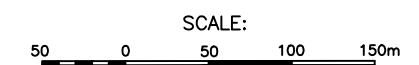
CITY OF TORONTO

DATE: MAY 26, 2016

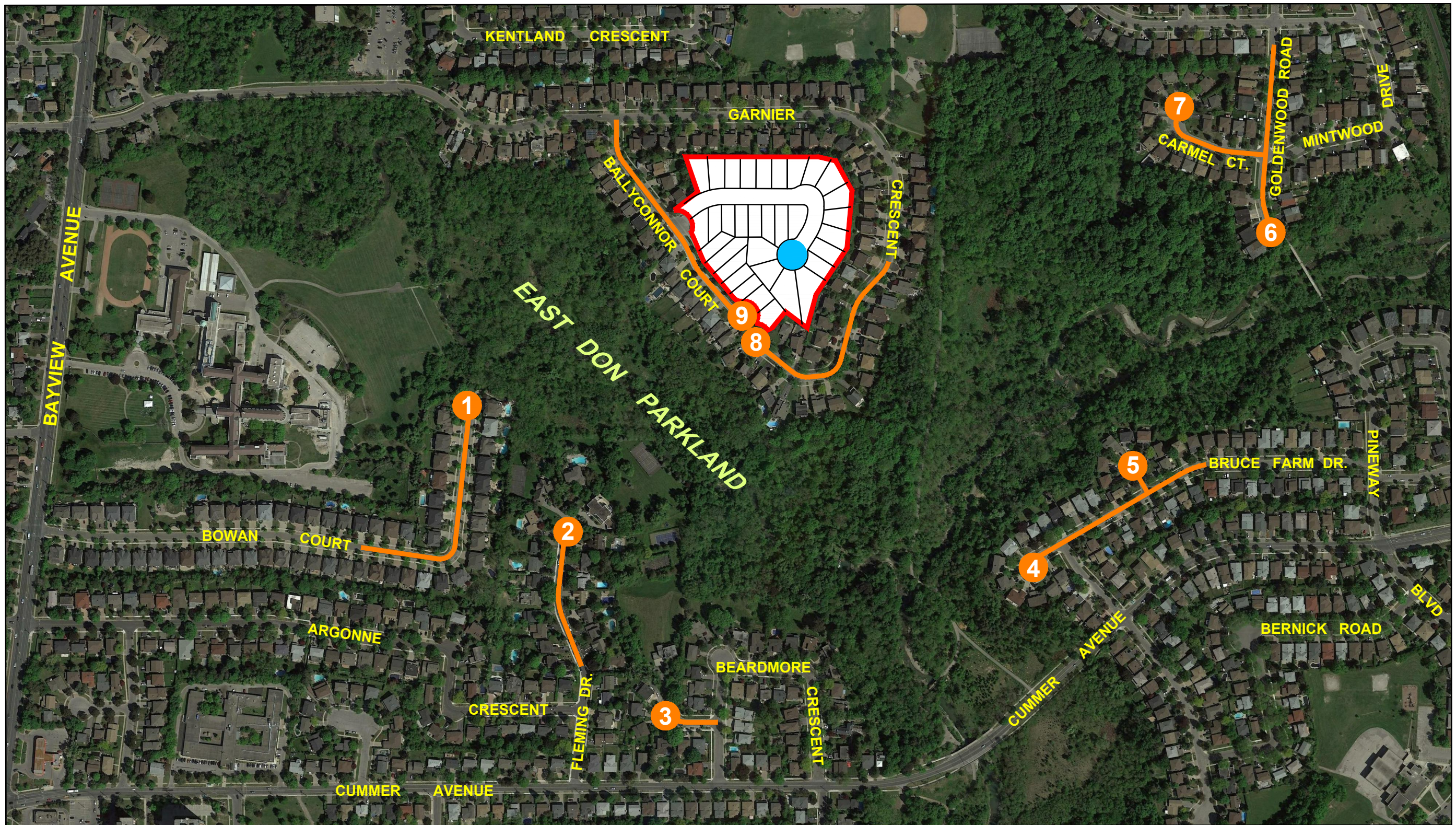
SOURCE OF AIR PHOTOGRAPHY:
GOOGLE EARTH PRO - 2015

LEGEND

- SUBJECT LANDS
- EXISTING CUL-DE-SAC LOCATIONS
- PROPOSED CUL-DE-SAC LOCATION



LEPEK CONSULTING INC.
 LAND USE PLANNING AND DEVELOPMENT CONSULTANTS
 2 Edith Drive, Ste. 503, Toronto, Ontario, M4R 2H7
 (416)485-3390 fax: (416)485-9464



BALLYCONNOR COURT
CUL-DE-SAC LOCATIONS

CITY OF TORONTO

DATE: MAY 26, 2016

SOURCE OF AIR PHOTOGRAPHY:
GOOGLE EARTH PRO - 2015

LEGEND

- SUBJECT LANDS
- EXISTING CUL-DE-SAC LOCATIONS
- PROPOSED CUL-DE-SAC LOCATION



SCALE:
50 0 50 100 150m

LEPEK CONSULTING INC.
LAND USE PLANNING AND DEVELOPMENT CONSULTANTS
2 Edith Drive, Ste. 503, Toronto, Ontario, M4R 2H7
(416)485-3390 fax: (416)485-9464