

Appendix 1 – Summary of Proposed Amendments to Chapter 694, Signs, General.

Chapter 694, Signs, General will be amended as follows:

- 1) Delete 694-15B (2) and (11) and replace them with the following:
 - (2) A roof sign, except a first party roof sign included in a Signage Master Plan consisting solely of first party signs, or a roof sign located in the Dundas Square Special Sign District
 - (11) An electronic roof sign, except a first party electronic roof sign included in a Signage Master Plan consisting solely of first party signs, or an electronic roof sign located in the Dundas Square Special Sign District
- 2) Delete 694-15B (10) and, add the following subsection to 694-14 as 694-14R

R. No sign shall be located in a visibility zone
- 3) Add the following to §694-15 as §694-15C

C. Notwithstanding §694-15B, third party roof signs and third party electronic roof signs are permitted in the Dundas Square Special Sign District.
- 4) Add the following subsection to 694-19A as 694-19A(16)

(16) ED-SSD Entertainment District Special Sign District
- 5) Amend Schedule A, Maps by replacing Sign District Map Ward 27: Toronto Centre-Rosedale and Sign District Map Ward 20 Trinity –Spadina of Schedule A, Maps, with maps which designate the premises municipally known as 279-283 Yonge Street as part of the Dundas Square Special Sign District, and designate each of the following premises as an OS-Open Space Sign District: 500 Bay Street; the portion of 1 Dundas Street West known as Trinity Square; 215 King Street West; 225 King Street West; 55 John Street; 200 Wellington Street West and 214 Wellington Street West, substantially in accordance with the maps provided below
- 6) Add the following subsections to 694-26C as 694-26C(2)

(2) Notwithstanding 694-26C(1), for any sign which is erected, displayed, modified or restored after July 30, 2016 the Dundas Square Special Sign District — DS-SSD — may contain first party signs only where the sign complies with the provisions of subsection 3 of Schedule C, Special Sign District Regulations;
- 7) Add the following subsections to 694-26D as 694-26D(2)

(2) Notwithstanding 694-26C(1), for any sign which is erected, displayed, modified or restored after July 30, 2016 the Dundas Square Special Sign District — DS-SSD — may

contain first party signs only where the sign complies with the provisions of subsection 4 of Schedule C, Special Sign District Regulations;

8) Add the following subsections to 694-26F as 694-26F(2)

(2) Notwithstanding 694-26C(1), for any sign which is erected, displayed, modified or restored after July 30, 2016 the City Hall Nathan Philips Square Special Sign District — CHNPS-SSD — may contain first party signs only where the sign complies with the provisions of subsection 5 of Schedule C, Special Sign District Regulations;

9) Add the following subsections to 694-26G as 694-26G(2)

(2) Notwithstanding 694-26C(1), for any sign which is erected, displayed, modified or restored after July 30, 2016 the University Avenue Special Sign District — UA-SSD — may contain first party signs only where the sign complies with the provisions of subsection 5 of Schedule C, Special Sign District Regulations;

10) Add the following subsections to 694-26 as 694-26O, P

O. The Entertainment District Special Sign District - ES-SSD - may contain first party signs only where the sign complies with subsection 1 of Schedule C, Special Sign District Regulations

P. The Entertainment District Special Sign District - ES-SSD - may contain third party signs only where the sign complies with subsection 2 of Schedule C, Special Sign District Regulations

11) Add the following as Schedule C, Special Sign District Regulations to Chapter 694, Signs, General:

**SCHEDULE C,
SPECIAL SIGN DISTRICT REGULATIONS**

1. The Entertainment District Special Sign District - ES-SSD - may contain the following first party signs:

A. An overhanging structure sign provided:

- (1) The sign shall not be erected on an overhanging structure located above the first storey of a building;
- (2) The sign face area of all signs erected on any part of the overhanging structure shall not exceed 1.0 square metre;
- (3) Subsection (2) does not apply where the sign is displayed in whole or in part above, below, or extending beyond the overhanging structure;

- (4) Where the sign is displayed in whole or in part above the overhanging structure, it shall not extend more than one metre above the overhanging structure;
 - (5) The sign shall not extend beyond either end of the wall from which the overhanging structure projects; and,
 - (6) The premises is designated as within Area A, in Sign District Map Ward 20 in Schedule A, Maps of Chapter 694, Signs, General.
- B. A ground sign providing direction erected at a point of vehicular ingress and egress to a premises provided:
 - (1) The sign face area shall not exceed 0.5 square metre;
 - (2) The height shall not exceed 1.5 metres;
 - (3) The sign shall have no more than two sign faces; and
 - (4) There shall be no more than two such signs erected at each point of vehicular ingress and egress to the premises and,
 - (5) The premises is designated as within Area A, in Sign District Map Ward 20 in Schedule A, Maps of Chapter 694, Signs, General.
- C. A ground sign, other than a sign providing direction permitted by Subsection 1B, provided:
 - (1) There shall be no more than one such sign erected at each frontage;
 - (2) The sign face area shall not exceed 0.5 square metre;
 - (3) The height shall not exceed 1.5 metres.
 - (4) The sign shall have no more than two sign faces;
 - (5) The sign shall not be erected within 6.0 metres of the intersection of two street lines and,
 - (6) The premises is designated as within Area A, in Sign District Map Ward 20 in Schedule A, Maps of Chapter 694, Signs, General.
- D. A wall sign displaying the logo or corporate symbol of a business located on the premises provided:
 - (1) The sign shall only be erected on an office building containing 10 or more storeys;
 - (2) There shall be no more than one sign erected on each wall of a building to a maximum of two signs;
 - (3) The sign shall only be erected on the uppermost storey, mechanical penthouse, or parapet wall of a building;

- (4) The sign face area shall not exceed 20 percent of the area of the wall at the uppermost storey, mechanical penthouse or parapet wall on which the sign is erected; and
 - (5) The sign shall not extend beyond either end of the wall on which it is erected and,
 - (6) The premises is designated as within Area A, in Sign District Map Ward 20 in Schedule A, Maps of Chapter 694, Signs, General.
- E. A wall sign, other than a sign displaying a logo or corporate symbol permitted by Subsection 1D, provided:
 - (1) The sign is located at the first storey:
 - (2) The height shall not exceed the top boundary of the first storey of the building wall upon which the sign is located;
 - (3) The maximum sign face area shall not exceed 1.0 square metres;
 - (4) The sign shall not extend above the wall or parapet wall of a building;
 - (5) The sign shall not extend beyond either end of the wall upon which it is erected; and,
 - (6) The premises is designated as within Area A, in Sign District Map Ward 20 in Schedule A, Maps of Chapter 694, Signs, General.
- F. A wall sign, other than a sign displaying a logo or corporate symbol permitted by Subsection 1D, or wall sign permitted by subsection 1E, provided:
 - (1) The sign is located above the first storey:
 - (2) The sign shall only be erected on a building containing between five and 10 storeys
 - (3) The sign shall be displayed between the fifth and the tenth storeys only
 - (4) The sign shall only be erected on the two uppermost storeys of a building
 - (5) The maximum sign face area shall not exceed 20 percent of the wall area on which it is erected
 - (6) There shall be no more than one sign erected on each wall of a building to a maximum of two signs
 - (7) The sign shall not extend beyond either end of the wall on which it is erected;
 - (8) The sign shall not be illuminated;
 - (9) The sign shall display alpha-numeric sign copy only and,
 - (10) The premises is designated as within Area A, in Sign District Map Ward 20 in Schedule A, Maps of Chapter 694, Signs, General.

G. A projecting sign provided:

- (1) The sign shall not be erected above the first storey;
- (2) The sign shall not project more than 1.0 m from the wall on which the sign is erected;
- (3) The sign shall have no more than two sign faces;
- (4) Where the sign has two sign faces, the sign faces shall be back to back;
- (5) Each sign face shall be perpendicular to the wall of the building on which the sign is erected;
- (6) The sign face area shall not exceed 1.0 square metre; and
- (7) The sign shall not be erected closer than 6.0 metres, measured horizontally from any point on the sign, from another projecting sign on the same premises; and,
- (8) The premises is designated as within Area A, in Sign District Map Ward 20 in Schedule A, Maps of Chapter 694, Signs, General.

H. An overhanging structure sign provided:

- (1) The sign shall not be erected on an overhanging structure located above the fourth storey of a building;
- (2) The total sign face area of all signs erected on any part of the overhanging structure shall not exceed 20 percent of the wall area on which it is erected
- (3) Subsection (2) does not apply where the sign is displayed in whole or in part above, below, or extending beyond the overhanging structure;
- (4) Where the sign is displayed in whole or in part above the overhanging structure, it shall not extend more than one metre above the overhanging structure; and
- (5) The sign shall not extend beyond either end of the wall from which the overhanging structure projects; and,
- (6) The premises is designated as within Area B, in Sign District Map Ward 20 in Schedule A, Maps of Chapter 694, Signs, General.

I. A ground sign providing direction erected at a point of vehicular ingress and egress to a premises provided:

- (1) The sign face area shall not exceed 0.5 square metre;
- (2) The height shall not exceed 1.5 metres;
- (3) The sign shall have no more than two sign faces; and
- (4) There shall be no more than two such signs erected at each point of vehicular ingress and egress to the premises and,

- (5) The premises is designated as within Area B, in Sign District Map Ward 20 in Schedule A, Maps of Chapter 694, Signs, General.

J. A wall sign provided:

- (1) The sign may display static, or electronic static sign copy;
- (2) The sign shall not be erected above the first storey;
- (3) The sign face area shall not exceed 2.5 square metres
- (4) The total sign face area of all wall signs erected at the first storey shall not exceed 20 percent of the area of the wall;
- (5) The sign shall not extend above the wall or parapet wall of a building; and
- (6) The sign shall not extend beyond either end of the wall upon which it is erected and,
- (7) The premises is designated as within Area B, in Sign District Map Ward 20 in Schedule A, Maps of Chapter 694, Signs, General.

K. An electronic wall sign provided:

- (1) The sign may display electronic static sign copy or electronic static sign copy and static or mechanical sign copy;
- (2) The sign shall not be erected above the first storey;
- (3) The sign face area shall not exceed 2.5 square metres
- (4) The total sign face area of all wall signs erected at the first storey shall not exceed 20 percent of the area of the wall;
- (5) The sign shall not extend above the wall or parapet wall of a building; and
- (6) The sign shall not extend beyond either end of the wall upon which it is erected and,
- (7) The premises is designated as within Area B, in Sign District Map Ward 20 in Schedule A, Maps of Chapter 694, Signs, General.

L. A projecting sign provided:

- (1) The sign shall not be erected above the fourth storey;
- (2) The sign shall not project more than 1.5 m from the wall on which the sign is erected;
- (3) The sign shall have no more than two sign faces;
- (4) Where the sign has two sign faces, the sign faces shall be back to back;
- (5) Each sign face shall be perpendicular to the wall of the building on which the sign is erected;

- (6) The sign face area shall not exceed 2.5 square metres;
- (7) The sign shall not be erected closer than 6.0 metres, measured horizontally from any point on the sign, from another projecting sign on the same premises and,
- (8) The premises is designated as within Area B, in Sign District Map Ward 20 in Schedule A, Maps of Chapter 694, Signs, General.

M. An overhanging structure sign provided:

- (1) The sign shall not be erected on an overhanging structure located above the third storey of a building;
- (2) The total sign face area of all signs erected on any part of the overhanging structure shall not exceed 2.5 square metres;
- (3) Subsection (2) does not apply where the sign is displayed in whole or in part above, below, or extending beyond the overhanging structure;
- (4) Where the sign is displayed in whole or in part above the overhanging structure, it shall not extend more than one metre above the overhanging structure; and
- (5) The sign shall not extend beyond either end of the wall from which the overhanging structure projects and,
- (6) The premises is designated as within Area C, in Sign District Map Ward 20 in Schedule A, Maps of Chapter 694, Signs, General.

N. A ground sign providing direction erected at a point of vehicular ingress and egress to a premises provided:

- (1) The sign face area shall not exceed 0.5 square metre;
- (2) The height shall not exceed 1.5 metres;
- (3) The sign shall have no more than two sign faces;
- (4) There shall be no more than two such signs erected at each point of vehicular ingress and egress to the premises and,
- (5) The premises is designated as within Area C, in Sign District Map Ward 20 in Schedule A, Maps of Chapter 694, Signs, General.

O. A ground sign, other than a sign providing direction permitted by Subsection N, provided:

- (1) There shall be no more than one such sign erected at each frontage;
- (2) The sign face area shall not exceed 0.5 square metre;
- (3) The height shall not exceed 1.5 metres;
- (4) The sign shall have no more than two sign faces;

- (5) The sign shall not be erected within 6.0 metres of the intersection of two street lines and,
- (6) The premises is designated as within Area C, in Sign District Map Ward 20 in Schedule A, Maps of Chapter 694, Signs, General.

P. A wall sign provided:

- (1) The sign shall not be erected above the second storey;
- (2) Where erected at the first storey, the height shall not exceed 1.5 times the vertical distance between grade and the top boundary of the first storey of the building wall upon which the sign is located, and the sign shall not extend above the sill of the lowest window at the second storey of the wall on which the sign is erected;
- (3) The total sign face area of all wall signs erected at the first storey shall not exceed 20 percent of the area of the wall at the first storey on which the signs are erected less the sign face area of any electronic wall signs erected on the wall at that storey;
- (4) The total sign face area of all wall signs erected at the second storey shall not exceed 10 percent of the area of the wall at the second storey on which the signs are erected less the sign face area of any electronic wall signs erected on the wall at that storey;
- (5) The sign shall not extend above the wall or parapet wall of a building;
- (6) The sign shall not extend beyond either end of the wall upon which it is erected and,
- (7) The premises is designated as within Area C, in Sign District Map Ward 20 in Schedule A, Maps of Chapter 694, Signs, General.

Q. A projecting sign provided:

- (1) The sign shall not be erected above the third storey;
- (2) The sign shall not project more than 1.5 m from the wall on which the sign is erected;
- (3) The sign shall have no more than two sign faces;
- (4) Where the sign has two sign faces, the sign faces shall be back to back;
- (5) Each sign face shall be perpendicular to the wall of the building on which the sign is erected;
- (6) The sign face area shall not exceed 2.5 square metres and,
- (7) The premises is designated as within Area C, in Sign District Map Ward 20 in Schedule A, Maps of Chapter 694, Signs, General.

2. The Entertainment District Special Sign District - ES-SSD - may contain the following third party signs:
 - A. A wall sign or a topiary wall sign provided:
 - (1) The sign face area shall not exceed 3.0 square metres;
 - (2) The height shall not exceed 3.0 metres;
 - (3) The sign shall not be erected facing a street;
 - (4) The sign shall not be erected within 30.0 metres of the intersection of a major street with any other street;
 - (5) The sign shall not be erected within 30.0 metres of any premises located, in whole or in part, in an R, RA, I or OS sign district;
 - (6) The sign shall not extend beyond either end of the wall on which it is erected;
 - (7) The sign shall have no more than one sign face; and
 - (8) The sign shall not extend above the wall or parapet wall of the building on which it is erected.
3. The Dundas Square Special Sign District – DS-SSD – may contain the following first party signs:
 - A. An overhanging structure sign provided:
 - (1) The sign shall not be erected on an overhanging structure located above the second storey of a building;
 - (2) Where the overhanging structure is located at the first storey of a building, the total sign face area of all signs erected on any part of the overhanging structure shall not exceed 50 percent of the external surface area of that part of the overhanging structure;
 - (3) Where the overhanging structure is located at the second storey of a building, the total sign face area of all signs erected on any part of the overhanging structure shall not exceed 25 percent of the external surface area of that part of the overhanging structure;
 - (4) Subsections (b) and (c) do not apply where the sign is displayed in whole or in part above, below, or extending beyond the overhanging structure;
 - (5) Where the sign is displayed in whole or in part above the overhanging structure, it shall not extend more than 1.0 metre above the overhanging structure; and
 - (6) The sign shall not extend beyond either end of the wall from which the overhanging structure projects.

- B. A ground sign providing direction erected at a point of vehicular ingress and egress to a premises provided:
- (1) The sign face area shall not exceed 0.5 square metre;
 - (2) The height shall not exceed 1.5 metres;
 - (3) The sign shall have no more than two sign faces; and
 - (4) There shall be no more than two such signs erected at each point of vehicular ingress and egress to the premises.
- C. A ground sign, other than a sign providing direction permitted by Subsection B, provided:
- (1) There shall be no more than one such sign erected at each frontage;
 - (2) Notwithstanding Subsection C(a), where a frontage exceeds 200 metres, two signs may be erected provided they are separated by a distance of 100 metres;
 - (3) The sign face area shall not exceed 0.3 square metre for each 1.0 metre (or part thereof) of frontage at which the sign is erected to a maximum of 20.0 square metres;
 - (4) The height shall not exceed:
 - (a) 3.5 metres when erected at a frontage less than or equal to 20 metres;
 - (b) 5.0 metres when erected at a frontage more than 20 metres but less than or equal to 30 metres;
 - (c) 6.0 metres when erected at a frontage more than 30 metres but less than or equal to 40 metres;
 - (d) 8.0 metres when erected at a frontage more than 40 metres but less than or equal to 60 metres; or
 - (e) 10.0 metres when erected at a frontage more than 60 metres.
 - (5) The sign shall have no more than two sign faces;
 - (6) The sign shall not be erected within 2.0 metres of any property line; and
 - (7) The sign shall not be erected within 6.0 metres of the intersection of two street lines.
- D. A wall sign displaying the logo or corporate symbol of a business located on the premises provided:
- (1) The sign shall only be erected on an office building containing 10 or more storeys;
 - (2) There shall be no more than one sign erected on each wall of a building to a maximum of four signs;
 - (3) The sign shall only be erected on the uppermost storey, mechanical penthouse, or parapet wall of a building;
 - (4) Each sign shall display identical sign copy;

- (5) The sign face area shall not exceed 20 percent of the area of the wall at the uppermost storey, mechanical penthouse or parapet wall on which the sign is erected to a maximum of 25.0 square metres; and
- (6) The sign shall not extend beyond either end of the wall on which it is erected.

E. A wall sign, other than a sign displaying a logo or corporate symbol permitted by Section 3D above, provided:

- (1) The sign shall not be erected above the second storey;
- (2) Where erected at the first storey, the height shall not exceed 1.5 times the vertical distance between grade and the top boundary of the first storey of the building wall upon which the sign is located, and the sign shall not extend above the sill of the lowest window at the second storey of the wall on which the sign is erected;
- (3) The total sign face area of all wall signs erected at the first storey shall not exceed 20 percent of the area of the wall at the first storey on which the signs are erected less the sign face area of any electronic wall signs erected on the wall at that storey;
- (4) The total sign face area of all wall signs erected at the second storey shall not exceed 10 percent of the area of the wall at the second storey on which the signs are erected less the sign face area of any electronic wall signs erected on the wall at that storey;
- (5) The sign shall not extend above the wall or parapet wall of a building; and
- (6) The sign shall not extend beyond either end of the wall upon which it is erected.

F. A projecting sign provided:

- (1) The sign shall not be erected above the second storey;
- (2) The sign shall not project more than 1.0 m from the wall on which the sign is erected;
- (3) The sign shall have no more than two sign faces;
- (4) Where the sign has two sign faces, the sign faces shall be back to back;
- (5) Each sign face shall be perpendicular to the wall of the building on which the sign is erected;
- (6) The sign face area shall not exceed 1.0 square metre; and
- (7) The sign shall not be erected closer than 6.0 metres, measured horizontally from any point on the sign, from another projecting sign on the same premises.

G. Notwithstanding Section A, B, C, D, E, F above, but subject to all other provisions of this Chapter, the lands municipally known in the year 2016 as 10 Dundas Street East may contain the following first party signs:

(1) Fifty-nine (59) wall signs identified by the letters Al, AA, AF, AG, AH, AJ, AK, AM, AN, AN2, AP, AQ, AR, AS, AT, AU, AW, AX, AY, AZ, B1, BA, BB, BC, BD, BE, BF, BG, BH, BK, BL, BM, BN, BP, BQ, BR, BS, BT, BU, BV, BW, BX, BY, BZ, CA, CB, CC, CD, CE, CX, DA, DB, DC, DD, DE, DF, DG, DH, and G as delineated on the diagrams indicated at Subsection (4) as Maps 1, 2, 3 and 4 – 10 Dundas Street East, are permitted provided:

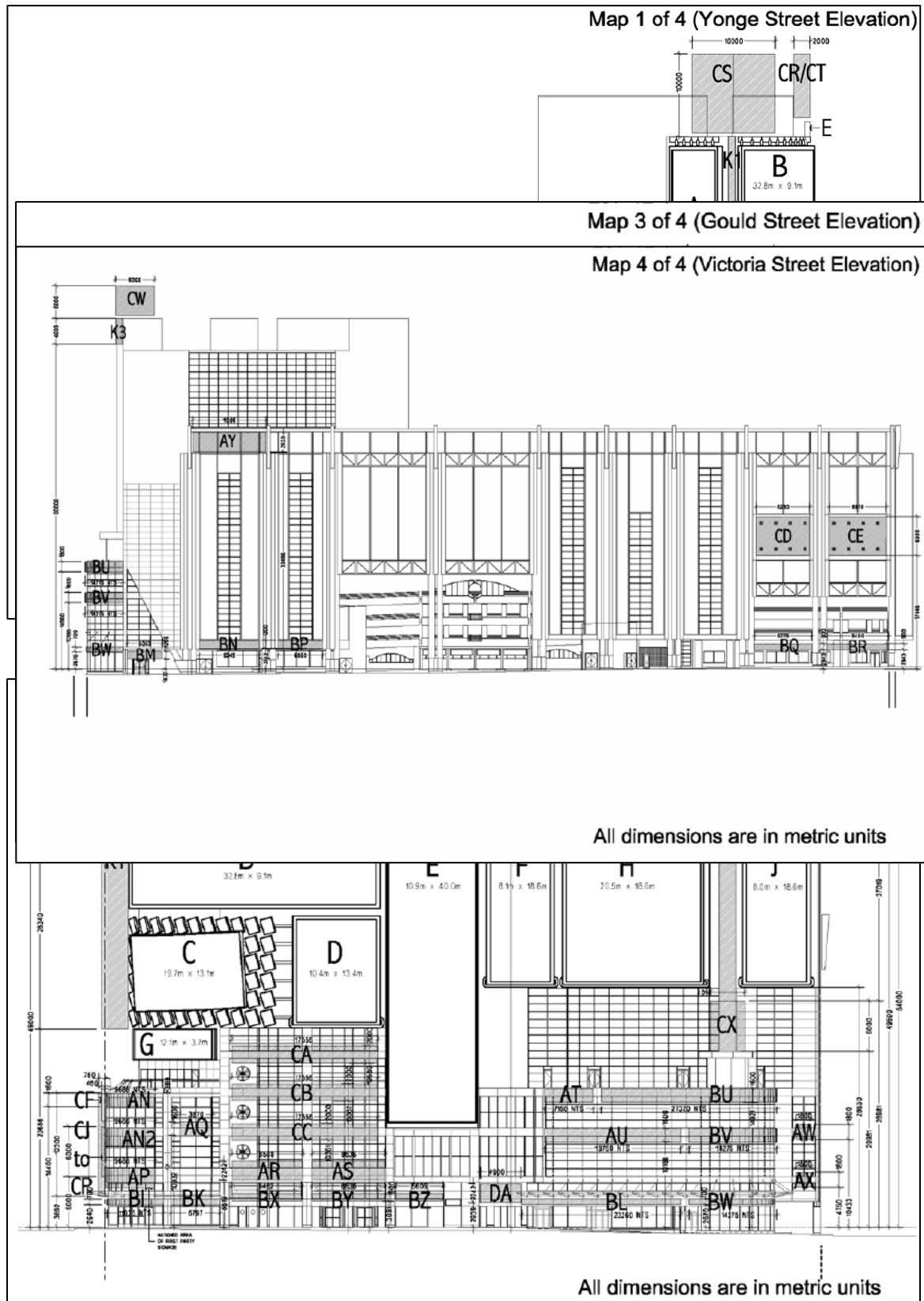
- (a) The sign shall display static copy only;
- (b) The sign face area and dimensions of the sign shall not exceed the hatched areas as delineated on the diagrams indicated at Subsection C(4) as Maps 1, 2, 3 and 4 – 10 Dundas Street East;
- (c) Where illuminated, the sign shall be internally illuminated only;
 - i. Notwithstanding C(1)(c) above, the six (6) wall signs identified by the letters BQ, BR, BS, BT, CD, and CE may be externally illuminated provided the sign shall not be up-lit;
- (d) A sign in the form of channel letters shall be vertically centered and attached to a sign raceway;
- (e) In addition, no person shall erect or display, or cause to be erected or displayed, the one (1) wall sign identified by the letters CX without first having obtained written approval from the Chief Planner and Executive Director, City Planning Division, or designate ("Chief Planner").

(2) Ten (10) projecting signs identified by the letters CF, CJ, CK, CL, CM, CN, CO, CP, K1, and K4 as delineated on the diagrams indicated at Subsection (4) as Maps 1, 2, and 3 – 10 Dundas Street East, are permitted provided:

- (a) The sign shall display static copy only;
 - i. Notwithstanding C(2)(a) above, the one (1) projecting sign identified by the letters K4 may display electronic static copy;
- (b) The sign shall not project more than 0.45 metres from the wall on which the sign is erected;
 - i. Notwithstanding C(2)(b) above, the one (1) projecting sign identified by the letters CF shall not project more than 0.75 metres from the wall on which the sign is erected;

- ii. Subsection C(2)(b) above, does not apply to the two (2) projecting signs identified by the letters K1 and K4;
 - (c) The sign shall have no more than two sign faces;
 - (d) Where the sign has two sign faces, the sign faces shall be back to back;
 - i. Subsection C(2)(d) above, does not apply to the one (1) projecting signs identified by the letters CF and K4;
 - (e) Each sign face shall be perpendicular to the wall of the building on which the sign is erected;
 - i. Subsection C(2)(e) above, does not apply to the one (1) projecting signs identified by the letters CF and K4;
 - (f) Where illuminated, the sign shall be internally illuminated only;
 - (g) In addition, no person shall erect or display, or cause to be erected or displayed, the three (3) projecting signs identified by the letters CF, K1, and K4 without first having obtained written approval from the Chief Planner and Executive Director, City Planning Division, or designate ("Chief Planner").
- (3) Six (6) roof signs or electronic roof signs identified by the letters CR, CS, CT, CW, K2, and K3, as delineated on the diagrams indicated at Subsection C(4) as Maps 1, 2, 3, and 4 – 10 Dundas Street East, are permitted provided:
- (a) The sign may display static copy, mechanical copy, or electronic static copy;
 - (b) The sign face area and dimensions of the sign shall not exceed the hatched areas as delineated on the diagrams indicated at Subsection C(4) as Maps 1, 2, 3, and 4 – 10 Dundas Street East;
 - (c) Where illuminated, the sign shall be internally illuminated only;
 - (d) In addition, no person shall erect or display, or cause to be erected or displayed, the six (6) roof signs or electronic roof signs without first having obtained written approval from the Chief Planner and Executive Director, City Planning Division, or designate ("Chief Planner").

(4) Maps 1, 2, 3, and 4 – 10 Dundas Street East



H. Notwithstanding Section A, B, C, D, E, F above, but subject to all other provisions of this Chapter, the lands municipally known in the year 2016 as 279-283

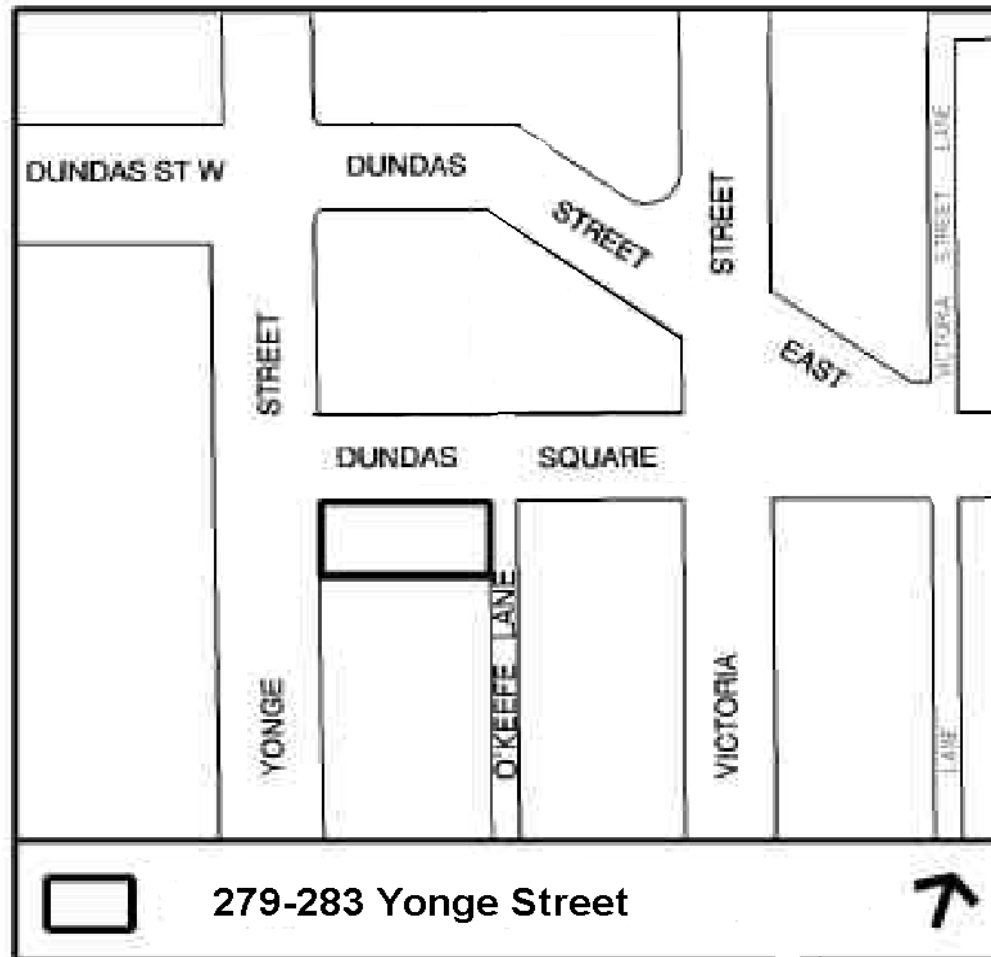
Yonge Street and legally described as PL 22A PT LTS 13 & 14, as delineated with heavy lines on the diagram indicated at Subsection (6) as Area Map 1 - 279-283 Yonge Street, may contain only the following first party signs:

- (1) Two (2) first party wall signs each displaying the logo "Hard Rock Café" provided:
 - (a) There shall be no more than one such sign erected on the northerly elevation of the building located on the premises and there shall be no more than one such sign erected on the westerly elevation of the building located on the premises;
 - (b) The sign shall be erected on the second storey;
 - (c) Each sign shall display identical sign copy;
 - (d) The sign face area of each sign shall not exceed 11.0 square metres; and
 - (e) Each sign shall not extend beyond either end of the wall on which it is erected.
- (2) One first party wall sign displaying the phrase "Love All Serve All" provided:
 - (a) The sign shall be erected on the westerly elevation of the building located on the premises;
 - (b) The sign shall be erected on the first storey;
 - (c) There shall be no more than one sign face;
 - (d) The sign face area of the sign shall not exceed 1.25 square metres; and
 - (e) Each sign shall not extend beyond either end of the wall on which it is erected.
- (3) One first party wall sign displaying the phrase "All is One" provided:
 - (a) The sign shall be erected on the northerly elevation of the building located on the premises;
 - (b) The sign shall be erected on the first storey;
 - (c) There shall be no more than one sign face;
 - (d) The sign face area of the sign shall not exceed 1.25 square metres; and
 - (e) The sign shall not extend beyond either end of the wall on which it is erected.
- (4) Prior to the issuance of any sign permit for the heritage property located at 279-283 Yonge Street, including a permit for the demolition/removal of existing signs and erection of new signs, the owner shall provide the following to the satisfaction of the Manager, Heritage Preservation Services:
 - (a) Sign permit construction drawings;
 - (b) Final signage plan, heritage interpretation plan and lighting plan for the exterior of the heritage building;

- (c) Heritage conservation drawings and specifications for heritage conservation work to implement the conservation plan referenced in the Heritage Impact Assessment, to be prepared by a qualified heritage consultant; and
- (d) A Letter of Credit, in a form and an amount satisfactory to the Chief Planner and Executive Director, City Planning Division, to secure all work included in the Heritage Impact Assessment.

(5) Area Map 1 - 279-283 Yonge Street

I.



Notwithstanding Section A, B, C, D, E, F above, but subject to all other provisions of this Chapter, the lands municipally known in the year 2016 as 33 Dundas Street East and conveniently known as 35 Dundas Street East, 37 Dundas Street East, and 259 Victoria Street and legally described as PLAN 22A LOT 68 PT LOT 69 PT DUNDAS ST E E/S VICTORIA ST RP 64R15467 PART 1 RP 64R16753 PARTS 1 2 5 TO 7 RP 66R23661 PARTS 10 AND 13, as delineated with heavy lines on the diagram indicated at Subsection F(3) as Area Map 1 – 259 Victoria Street (37 Dundas Street East), may contain the following first party signs:

- (5) Five (5) wall signs identified by the letters A1, A2, B1, B2, C, G, and I, as delineated on the diagrams indicated at Subsection (4) as North Elevation and West Elevation – 259 Victoria Street, are permitted provided:

- (a) The sign face area, the dimensions of the sign, and the method of copy display shall not exceed the hatched areas as delineated on the diagrams indicated at Subsection F(4) as North Elevation and West Elevation – 259 Victoria Street, and is as follows:

Sign Location	Maximum Vertical Dimension (m)	Maximum Horizontal Dimension (m)	Maximum Sign Face Area (m ²)	Method of Copy Display
A1	15.9	7.5	120	Static
A2	4.7	10.4	49	Static
B1	0.6	31	19	Static
B2	1.8	26.5	48	Readograph
C	15.9	8.4	134	Static
G	0.8	17.7	15	Readograph
I	0.8	17.7	15	Static

- (b) Notwithstanding §694-14J, the two (2) wall sign identified by the letters B2 and G may display readograph copy in a "ticker-tape" scrolling fashion;

- (6) Two (2) roof signs or electronic roof signs identified by the letters B3 and B4, as delineated on the diagrams indicated at Subsection F(4) as North Elevation and West Elevation – 259 Victoria Street, are permitted provided:

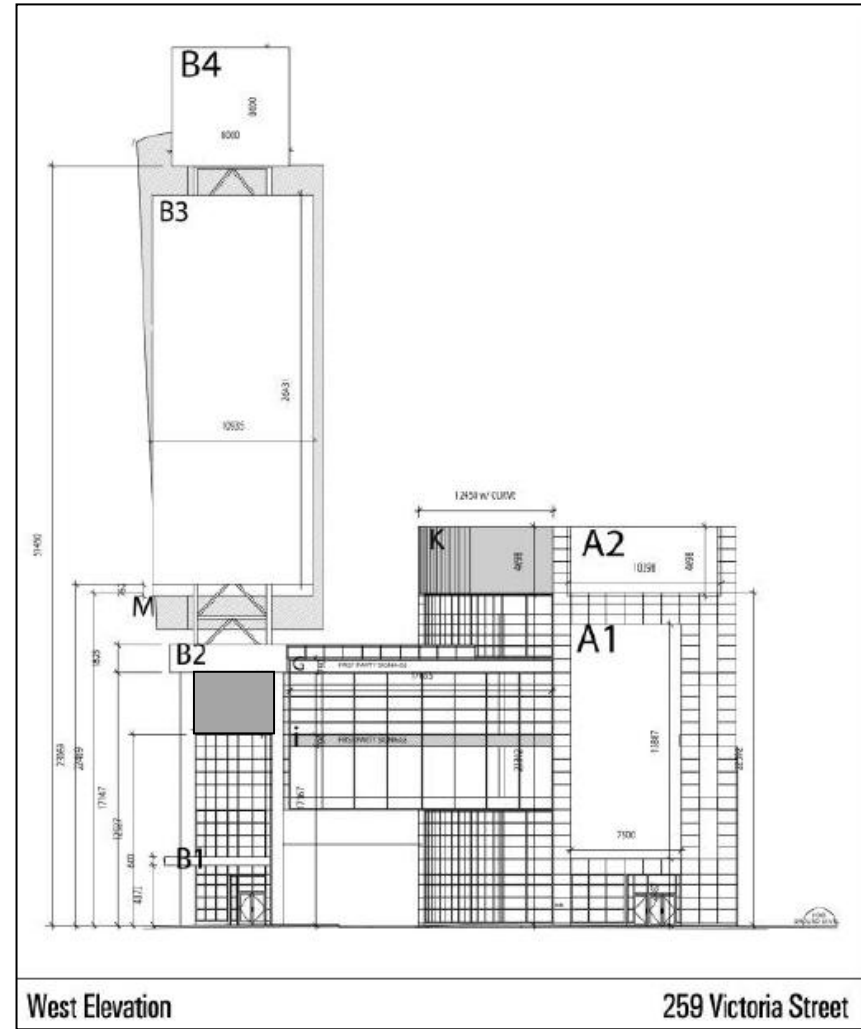
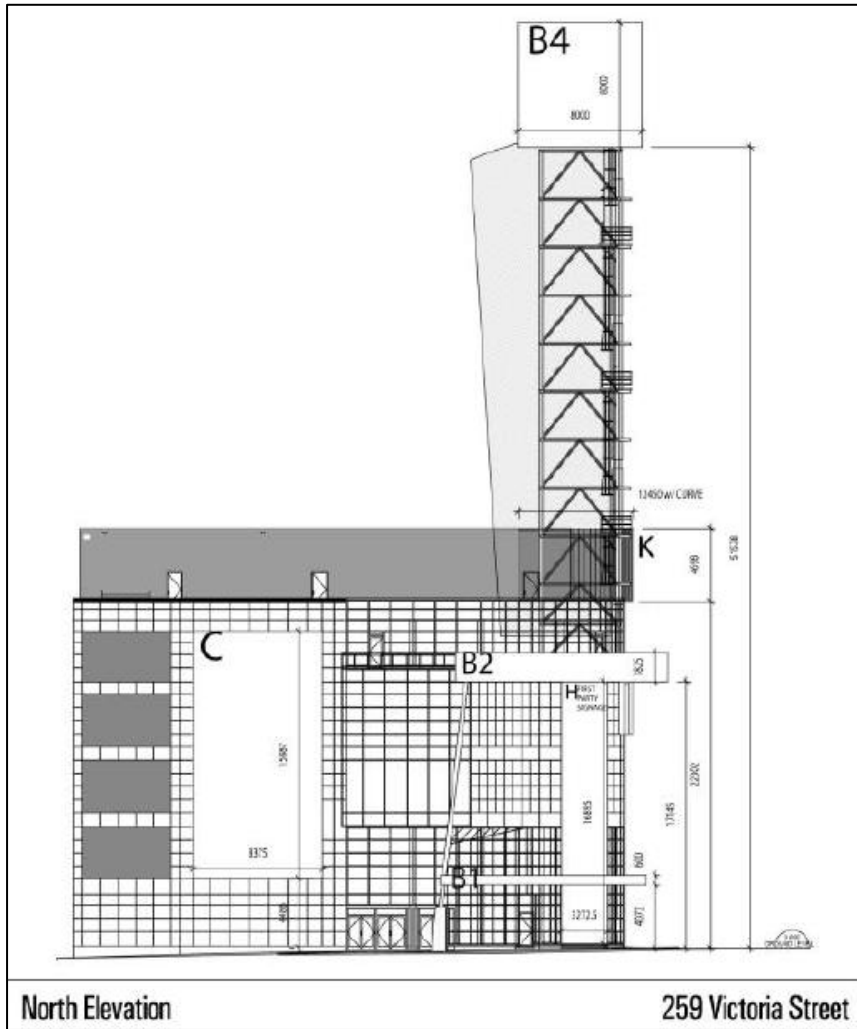
- (a) The sign face area, the dimensions of the sign, and the method of copy display shall not exceed the hatched areas as delineated on the diagrams indicated at Subsection F(4) as North Elevation and West Elevation – 259 Victoria Street, and is as follows:

Sign Location	Maximum Vertical Dimension (m)	Maximum Horizontal Dimension (m)	Maximum Sign Face Area (m ²)	Method of Copy Display
B3	26.4	10.9	288	Electronic Moving Copy
B4	8.0	8.0	64	Static

(7) Area Map 1 – 259 Victoria Street (37 Dundas Street East)



(8) North Elevation and West Elevation – 259 Victoria Street



J. Notwithstanding Section A, B, C, D, E, F above, but subject to all other provisions of this Chapter,, the lands municipally known in the year 2016 as 1 Dundas Street West and commonly known as "The Eaton Centre" may contain the following first party signs:

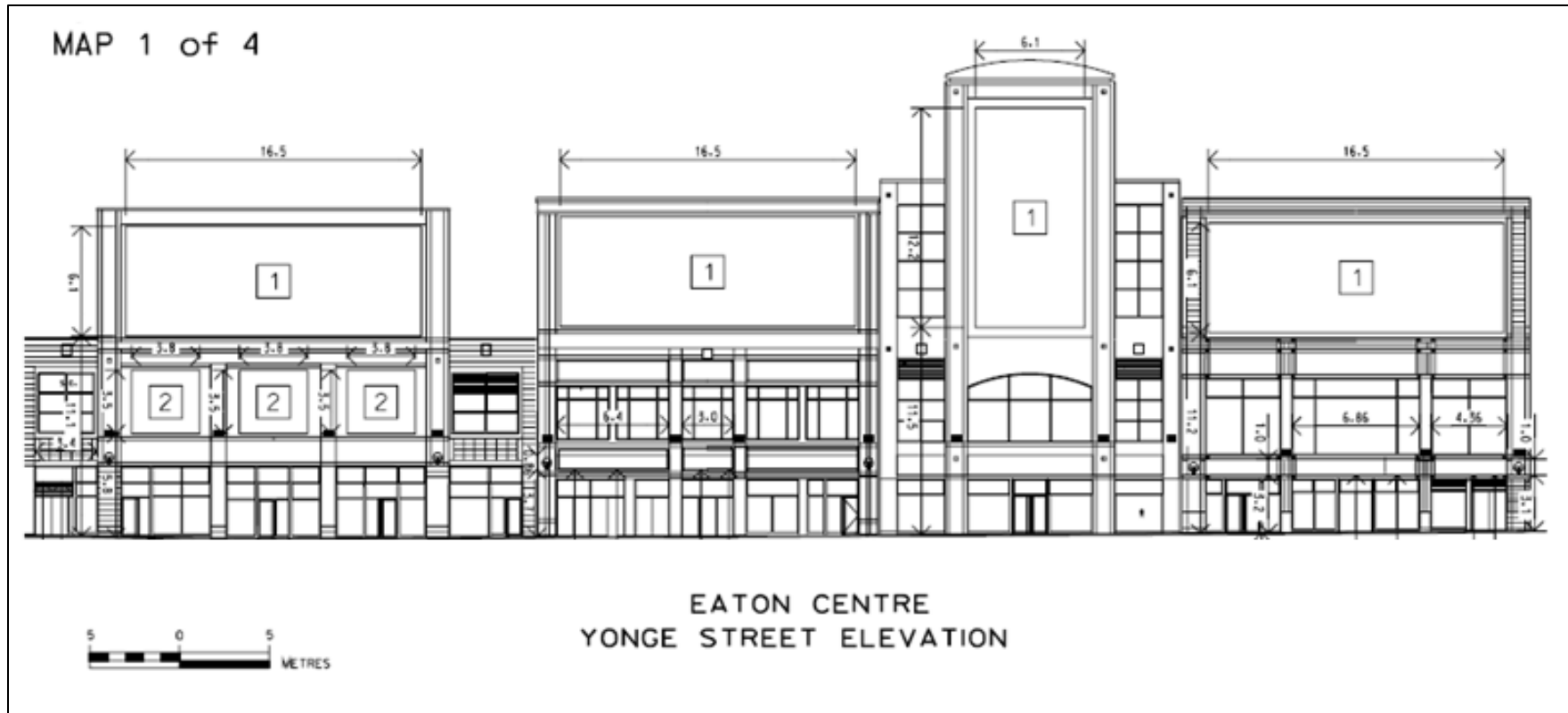
(9) Thirteen (13) wall signs identified by the number 1 and 2, as delineated on the diagrams indicated at Subsection I(3) as Maps 1, 2 and 3 inclusive, are permitted provided:

- (a) The sign shall display static copy only;
- (b) The sign face area and dimensions of the sign shall not exceed the dimensions as delineated on the diagrams indicated at Subsection I(3) as Maps 1, 2 and 3 inclusive;
- (c) Where illuminated, the sign shall be internally illuminated only; and
- (d) Notwithstanding §694-20A(1), the sign copy may advertise, promote, or direct attention to goods available at the premises and such portion of the sign copy which advertises, promotes, or directs attention to goods available at the premises may equal 100 percent of the total sign face area.

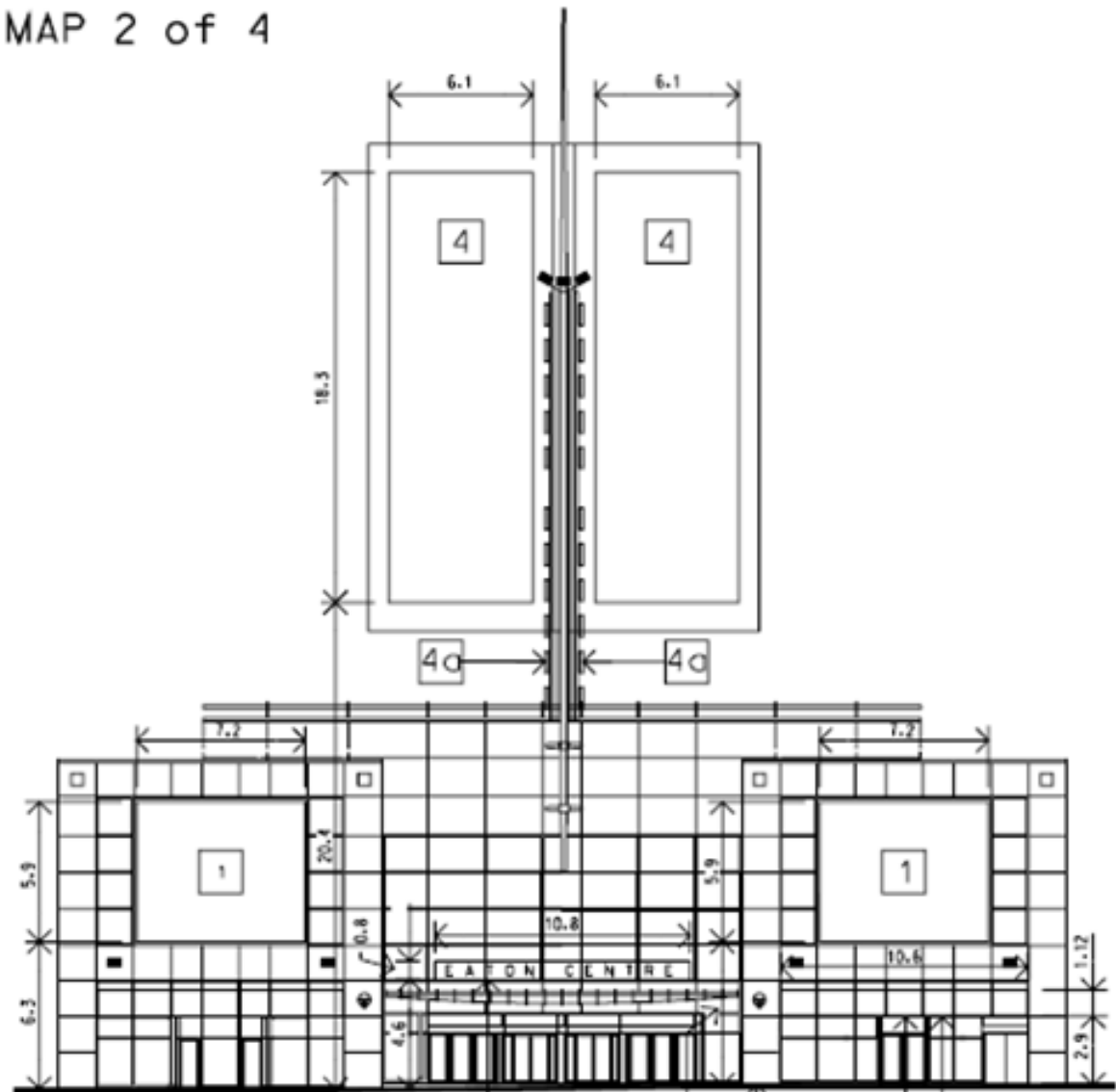
(10) One (1) roof sign identified by the number 4 as delineated on the diagrams indicated at Subsection I(3) as Maps 2 and 4, is permitted provided:

- (a) There shall be no more than two sign faces;
- (b) The sign shall display static copy only;
- (c) The sign face area and dimensions of the sign shall not exceed the dimensions as delineated on the diagrams indicated at Subsection I(3) as Maps 2 and 4 inclusive;
- (d) Where illuminated, the sign shall be internally illuminated only; and
- (e) Notwithstanding §694-20A(1), the sign copy may advertise, promote, or direct attention to goods available at the premises and such portion of the sign copy which advertises, promotes, or directs attention to goods available at the premises may equal 100 percent of the total sign face area.

(10) Maps 1, 2, 3 and 4



MAP 2 of 4



EATON CENTRE
YONGE STREET ELEVATION

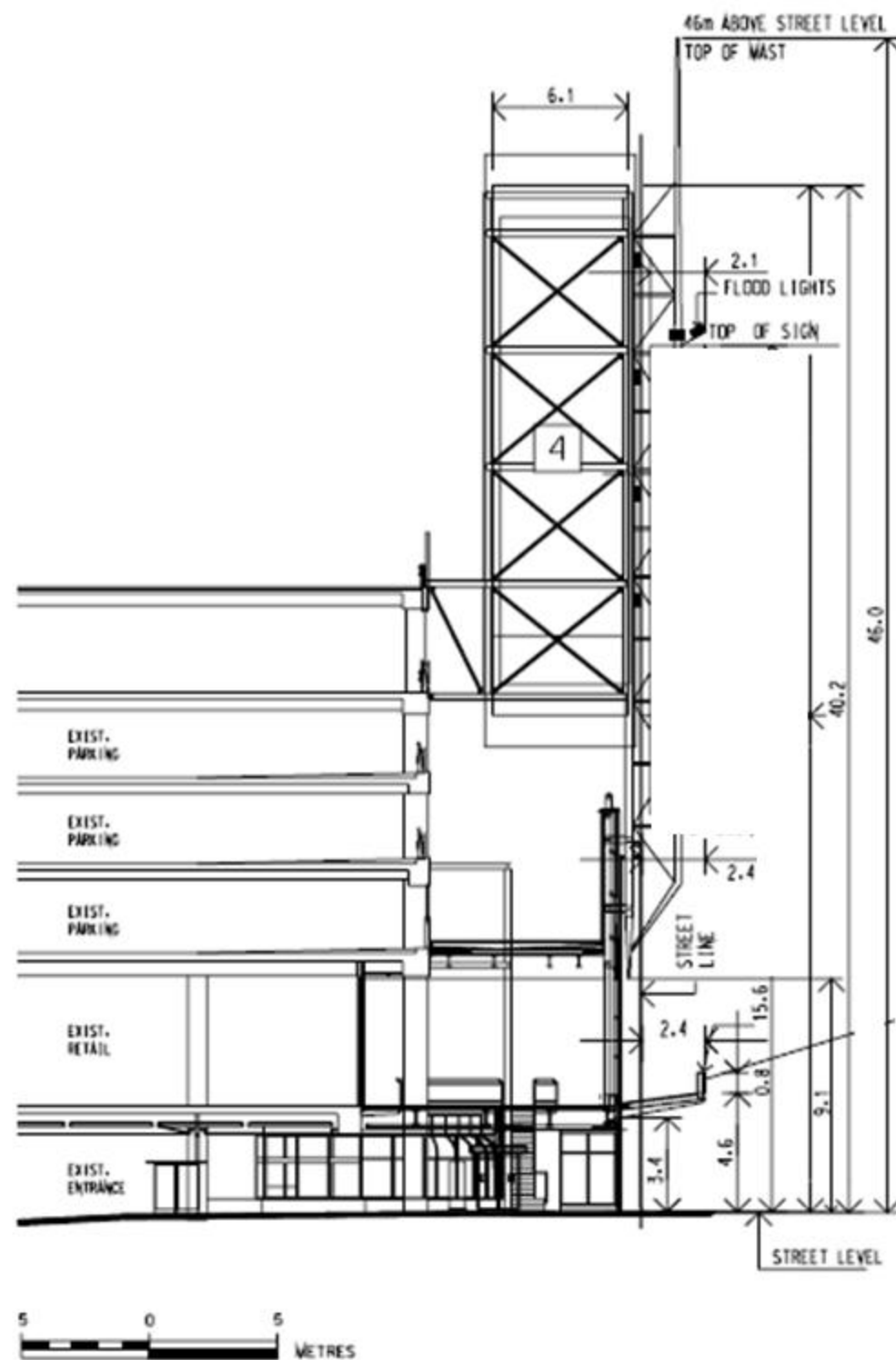


MAP 3 of 4



EATON CENTRE
YONGE STREET ELEVATION

MAP 4 of 4



4. The Dundas Square Special Sign District – DS-SSD – may contain the following third party signs:
 - A. A wall sign, electronic wall sign or a topiary wall sign provided:
 - (1) The sign face area shall not exceed 20.0 square metres;
 - (2) The height shall not exceed 15.0 metres;
 - (3) The sign shall not be erected facing a street;
 - (4) The sign shall not be erected within 30.0 metres of the intersection of a major street with any other street;
 - (5) The sign shall not be erected within 30.0 metres of any premises located, in whole or in part, in an R, RA, or OS sign district;
 - (6) The sign shall not extend beyond either end of the wall on which it is erected;
 - (7) The sign shall have no more than one sign face; and
 - (8) The sign shall not extend above the wall or parapet wall of the building on which it is erected.
 - B. A ground sign or an electronic ground sign provided:
 - (1) The sign face area shall not exceed 20.0 square metres;
 - (2) The height shall not exceed 10.0 metres;
 - (3) The sign shall not be erected within any required setback of a building from a street as regulated by the City's applicable Zoning By-law;
 - (4) The sign shall not be erected within 30.0 metres of the intersection of a major street with any other street;
 - (5) The sign shall not be erected within 30.0 metres of any premises located, in whole or in part, in an R, RA or OS sign district;
 - (6) There shall be no more than one ground sign or electronic ground sign erected on the premises; and
 - (7) The sign shall have no more than two sign faces.
 - C. The lands municipally known in the year 2016 as 10 Dundas Street East may contain the following third party signs, Notwithstanding the definition of WALL SIGN as contained at Section 694-1, as it specifically pertains to maximum projection from the wall on which it is erected,
 - (1) six (6) third party wall signs identified by the letters B, D, E, F, H, and J as delineated on the diagrams indicated at Subsection X as Maps 1 and 2 – 10 Dundas Street East, are permitted provided:
 - (a) The sign may display static copy or mechanical copy only;

- (b) The sign face dimensions, maximum projection from the wall on which it is erected, and maximum sign face area shall not exceed the hatched areas as delineated on the diagrams indicated at Subsection X as Maps 1 and 2 – 10 Dundas Street East, and the table indicated at Subsection (c);

- (c) Table

Sign Location	Vertical Dimension (m)	Horizontal Dimension (m)	Maximum Projection (m)	Maximum Sign Face Area (m ²)
B	9.10	32.80	2.10	298.50
D	13.10	10.40	1.22	139.40
E	40.00	10.90	2.06	436.00
F	18.60	8.10	1.22	150.50
H	18.60	20.50	1.22	381.10
J	18.60	8.00	1.22	148.80

- (d) Where illuminated, the sign shall be internally illuminated only;
- (e) Notwithstanding 4 above, a wall sign located in sign location B as identified in the table above may be externally illuminated;
- (f) Notwithstanding Subsection 694-17, a wall sign located in sign location J as identified in the table above may project on the Victoria Street public right-of-way only to the extent where portions of the building façade encroach on the Victoria Street public right-of-way;

- (2) Two (2) electronic wall signs identified by the letters A and C as delineated on the diagrams indicated at Subsection X as Maps 1 and 2 – 10 Dundas Street East, are permitted provided:

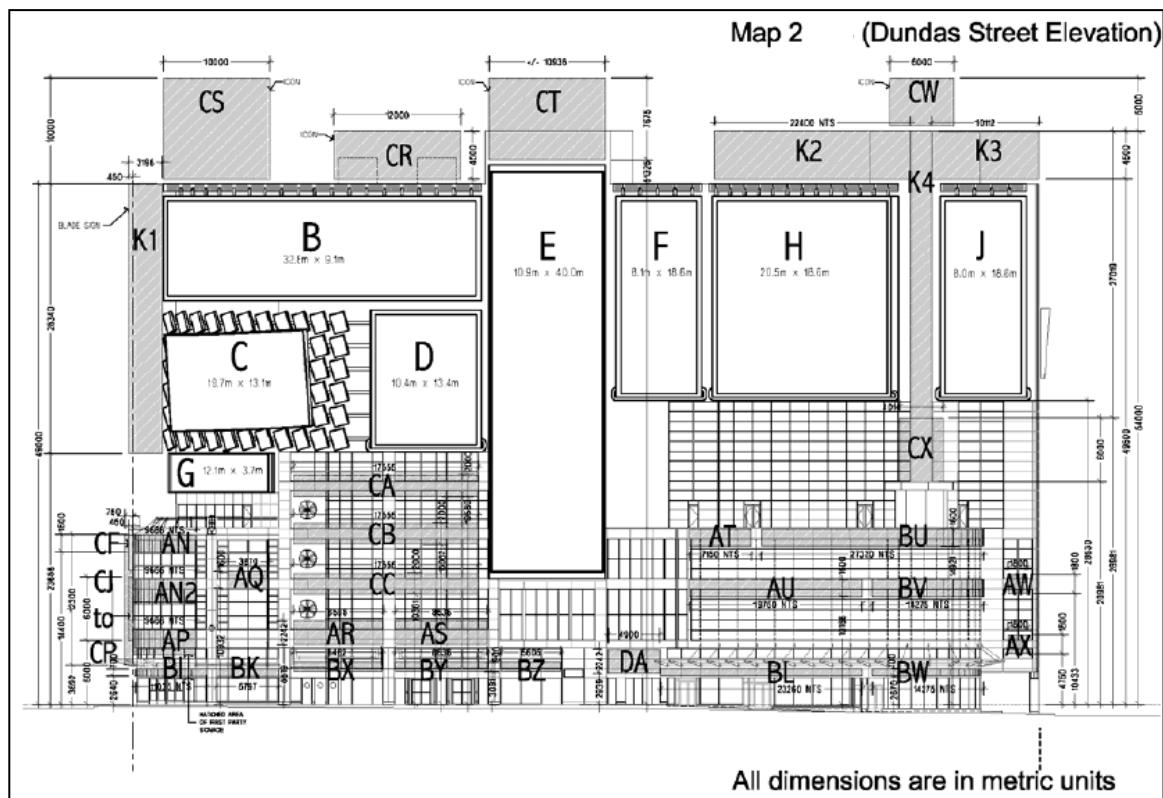
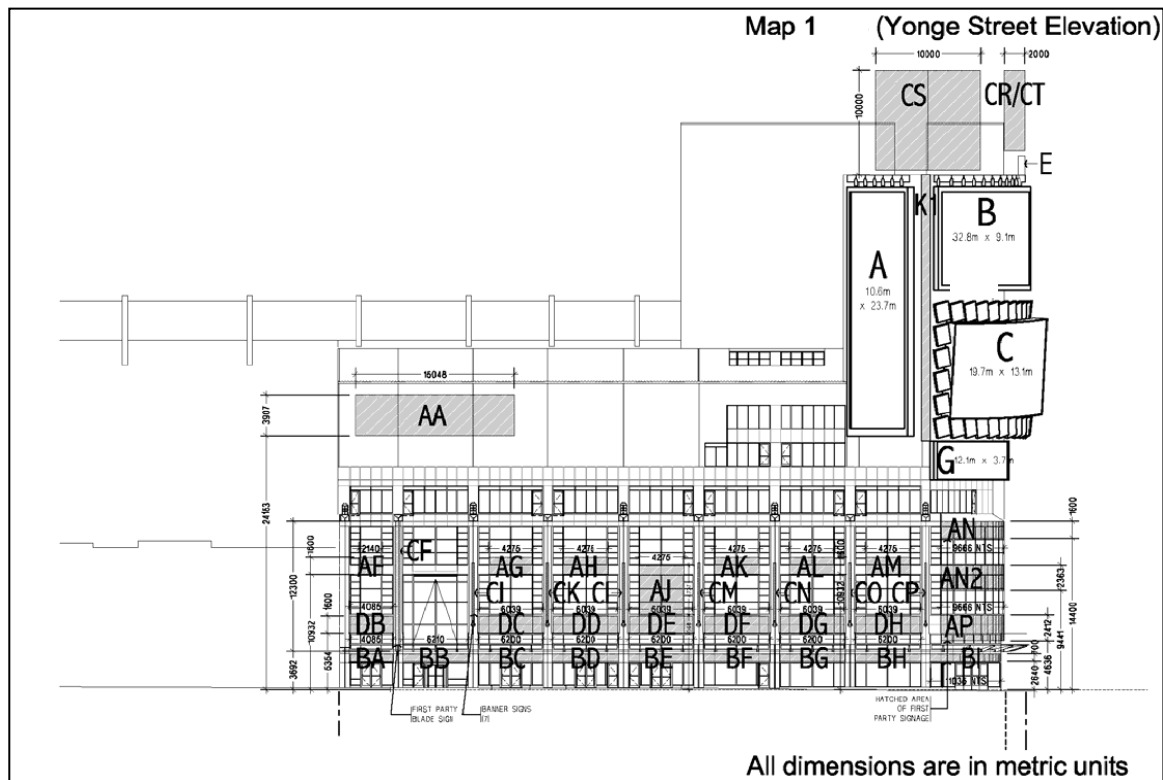
- (a) The sign may display electronic static copy or electronic moving copy;
- (b) The sign face dimensions, maximum projection from the wall on which it is erected, and maximum sign face area shall not exceed the hatched areas as delineated on the diagrams indicated at Subsection X as Maps 1 and 2 – 10 Dundas Street East, and the table indicated at Subsection (c);

- (c) Table 2

Sign Location	Vertical Dimension (m)	Horizontal Dimension (m)	Maximum Projection (m)	Maximum Sign Face Area (m ²)
A	23.70	10.6	1.22	251.20
C	13.10	19.70	3.04	258.10

- (d) No sign shall be located in, or projected over, in whole or in part, a public right-of-way.

(1) Maps 1 and 2 – 10 Dundas Street East



D. Notwithstanding Section A, above, but subject to all other provisions of this Chapter, the lands municipally known in the year 2016 as 279-283 Yonge Street and legally described as PL 22A PT LTS 13 & 14, as delineated with heavy lines on the diagram indicated at Subsection E(6) as Area Map 1 - 279-283 Yonge Street, may contain only the following third party signs:

- (6) One third party roof sign, containing no more than five (5) sign faces and no more than one architectural light column, provided:
 - (a) One sign face, containing static copy and facing southerly, shall not exceed a sign face width of 7.72 metres and a sign face height of 11.43 metres, and shall be erected so that height of the sign face does not exceed 26.562 metres from grade;
 - (b) One sign face, containing static copy and facing northerly, shall not exceed a sign face width of 27.03 metres and a sign face height of 7.01 metres, and shall be erected so that the height of the sign face does not exceed 21.44 metres from grade;
 - (c) One sign face, containing static copy displaying the name, logo or corporate symbol of an advertising sponsor and facing northerly, shall not exceed a sign face width of 24.38 metres and a sign face height of 1.34 metres, and shall be erected so that the height of the sign face does not exceed 24.31 metres from grade;
 - (d) One curved sign face, containing electronic moving copy and facing northerly and westerly, shall not exceed a sign face width of 19.05 metres and a sign face height of 11.89, and shall be erected so that the height of the sign face does not exceed 26.13 metres from grade;
 - (e) One curved sign face, containing mechanical copy and facing northerly and westerly, shall not exceed a sign face width of 17.2 metres and a sign face height of 4.27 metres, and shall be erected so that the height of the sign face does not exceed 30.44 metres from grade; and
 - (f) The architectural light column with a 0.3 metre diameter top sphere, containing static copy displaying the logo or corporate symbol of an advertising sponsor, shall be erected so that the height of the architectural light column does not exceed 43.43 metres from grade.
- (7) Prior to the issuance of any sign permit for the heritage property located at 279-283 Yonge Street, including a permit for the demolition/removal of existing signs and erection of new signs, the owner shall provide the following to the satisfaction of the Manager, Heritage Preservation Services:
 - (a) Sign permit construction drawings;
 - (b) Final signage plan, heritage interpretation plan and lighting plan for the exterior of the heritage building;
 - (c) Heritage conservation drawings and specifications for heritage conservation work to implement the conservation plan referenced in the Heritage Impact Assessment, to be prepared by a qualified heritage consultant; and

(d) A Letter of Credit, in a form and an amount satisfactory to the Chief Planner and Executive Director, City Planning Division, to secure all work included in the Heritage Impact Assessment.

E. Subject to all other provisions of this Chapter, the lands municipally known in the year 2016 as 33 Dundas Street East and conveniently known as 35 Dundas Street East, 37 Dundas Street East, and 259 Victoria Street and legally described as PLAN 22A LOT 68 PT LOT 69 PT DUNDAS ST E E/S VICTORIA ST RP 64R15467 PART 1 RP 64R16753 PARTS 1 2 5 TO 7 RP 66R23661 PARTS 10 AND 13, as delineated with heavy lines on the diagram indicated at Subsection G(3) as Area Map 1 – 259 Victoria Street (37 Dundas Street East), may contain the following third party signs:

(1) One (1) wall sign identified by the letter K, as delineated on the diagrams indicated at Subsection (4) as North Elevation and West Elevation – 259 Victoria Street, is permitted provided:

(a) The sign face area, the dimensions of the sign, and the method of copy display shall not exceed the hatched areas as delineated on the diagrams indicated at Subsection G(4) as North Elevation and West Elevation – 259 Victoria Street, and the table indicated at Subsection (b);

(b) Table:

Sign Location	Maximum Vertical Dimension (m)	Maximum Horizontal Dimension (m)	Maximum Sign Face Area (m ²)	Method of Copy Display
K	4.7	12.5	59	Static

(2) One (1) roof sign identified by the letter M, as delineated on the diagrams indicated at Subsection (4) as North Elevation and West Elevation – 259 Victoria Street, are permitted provided:

(a) The sign face area, the dimensions of the sign, and the method of copy display shall not exceed the hatched areas as delineated on the diagrams indicated at Subsection (4) as North Elevation and West Elevation – 259 Victoria Street, the table indicated at Subsection (b);

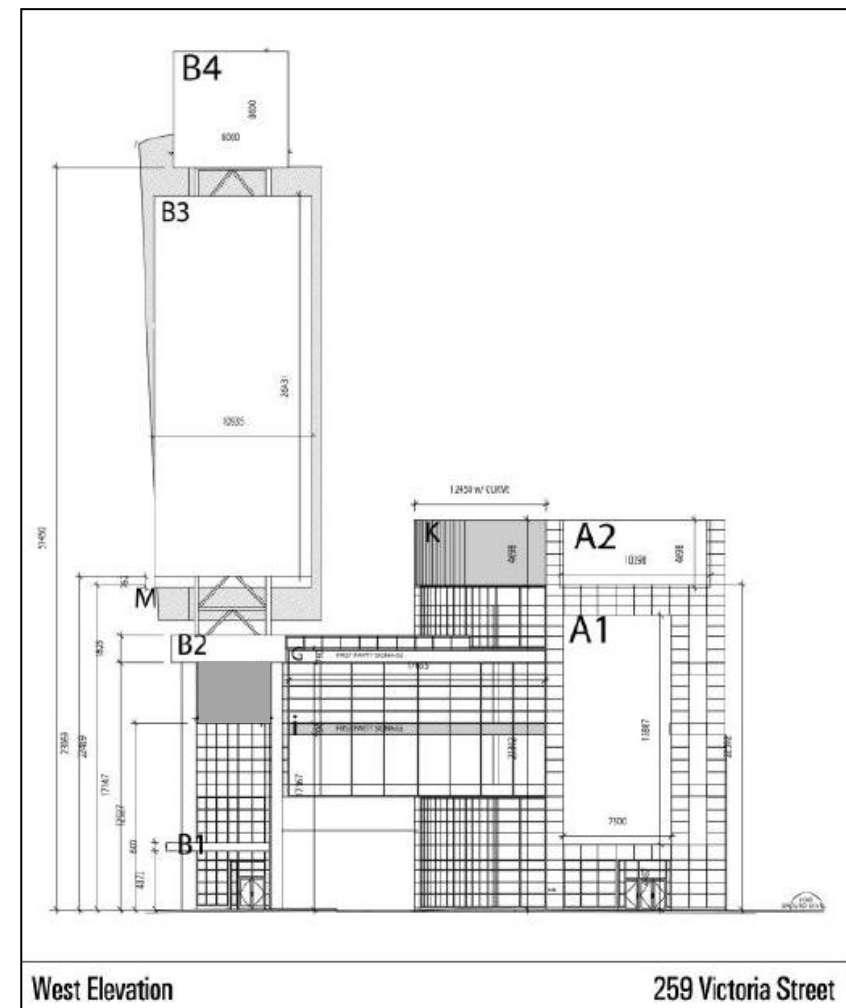
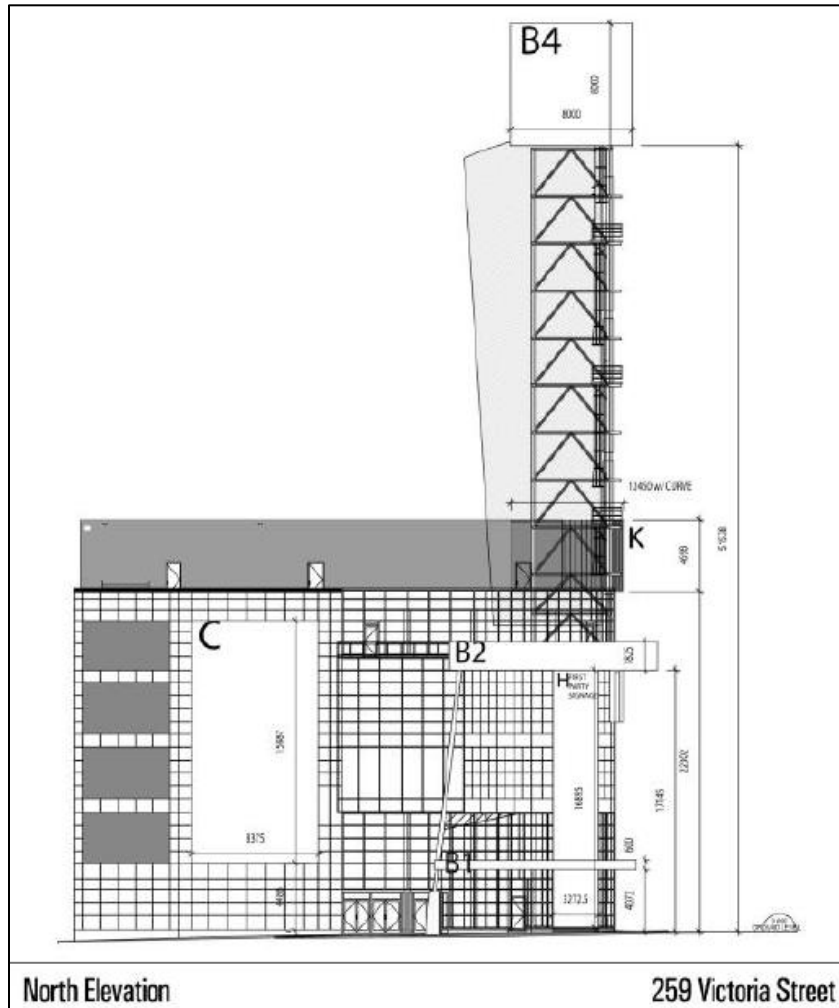
(b) Table:

Sign Location	Maximum Vertical Dimension (m)	Maximum Horizontal Dimension (m)	Maximum Sign Face Area (m ²)	Method of Copy Display
M	0.77	10.95	8.5	Static

(3) Area Map 1 – 259 Victoria Street (37 Dundas Street East)



(4) North Elevation and West Elevation – 259 Victoria Street



F. Subject to all other provisions of this chapter, the lands municipally known in the year 2016 as 306 Yonge Street and legally described as PL 2A LT4 WITH ROW, may contain one (1) third party roof sign, displayed as a structure commonly known as a media tower, as follows:

(1) As delineated on the diagrams indicated at Subsection (3) as Proposed South Facing Elevation of Media Tower and Proposed North Facing Elevation of Media Tower, on the south-facing elevation of the media tower:

(a) One (1) sign face, described as Sign #1, provided:

- i. The sign face shall be rectangular;
- ii. The horizontal dimension shall not exceed 29.60 metres;
- iii. The vertical dimension shall not exceed 18.30 metres;
- iv. The sign face may only display static copy, mechanical copy, readograph copy, electronic static copy, or electronic moving copy;
- v. The sign face shall be set back not less than 0.4 metres from the easterly street line; and
- vi. The highest point of the sign face from the top of the roof shall not exceed 47.5 metres.

(b) One (1) sign face, described as Sign #2, provided:

- i. The sign face shall be rectangular;
- ii. The horizontal dimension shall not exceed 12.80 metres;
- iii. The vertical dimension shall not exceed 22.30 metres;
- iv. The sign face may only display static copy, mechanical copy, readograph copy, electronic static copy, or electronic moving copy;
- v. The sign face shall be set back not less than 16.2 metres from the easterly street line;
- vi. The highest point of the sign face from the top of the roof shall not exceed 28.2 metres; and
- vii. Notwithstanding §694-18E(1), the sign face may be up-lit.

(c) One (1) sign face, described as Sign #3, provided:

- i. The sign face shall be square;
- ii. The horizontal dimension shall not exceed 12.20 metres;
- iii. The vertical dimension shall not exceed 12.20 metres;
- iv. The sign face shall only display static copy;

- v. The sign face shall be set back not less than 4.0 metres from the easterly street line;
- vi. The highest point of the sign face from the top of the roof shall not exceed 28.2 metres; and
- vii. Notwithstanding §694-18E(1), the sign face may be up-lit.

(d) One (1) sign face, described as Sign #4, provided:

- i. The sign face shall be rectangular;
- ii. The horizontal dimension shall not exceed 12.20 metres;
- iii. The vertical dimension shall not exceed 9.10 metres;
- iv. The sign face may only display static copy, mechanical copy, readograph copy, electronic static copy, or electronic moving copy;
- v. The sign face shall be set back not less than 4.0 metres from the easterly street line; and
- vi. The highest point of the sign face from the top of the roof shall not exceed 15.0 metres.

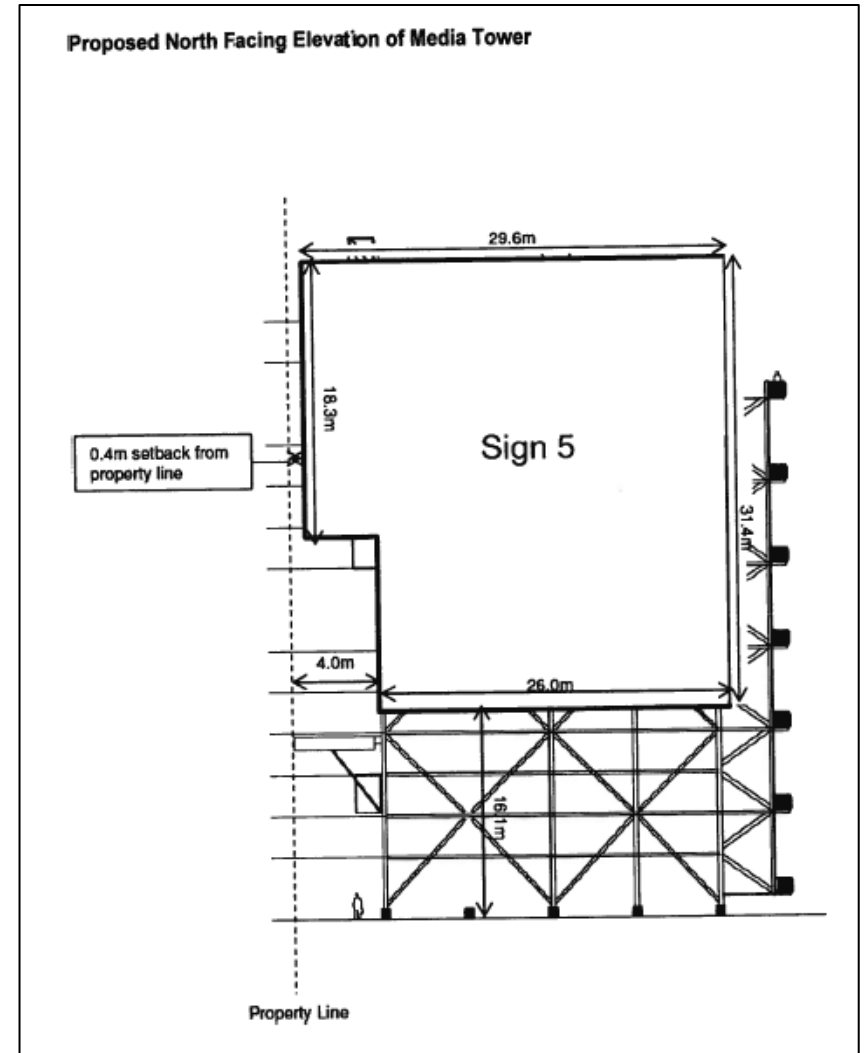
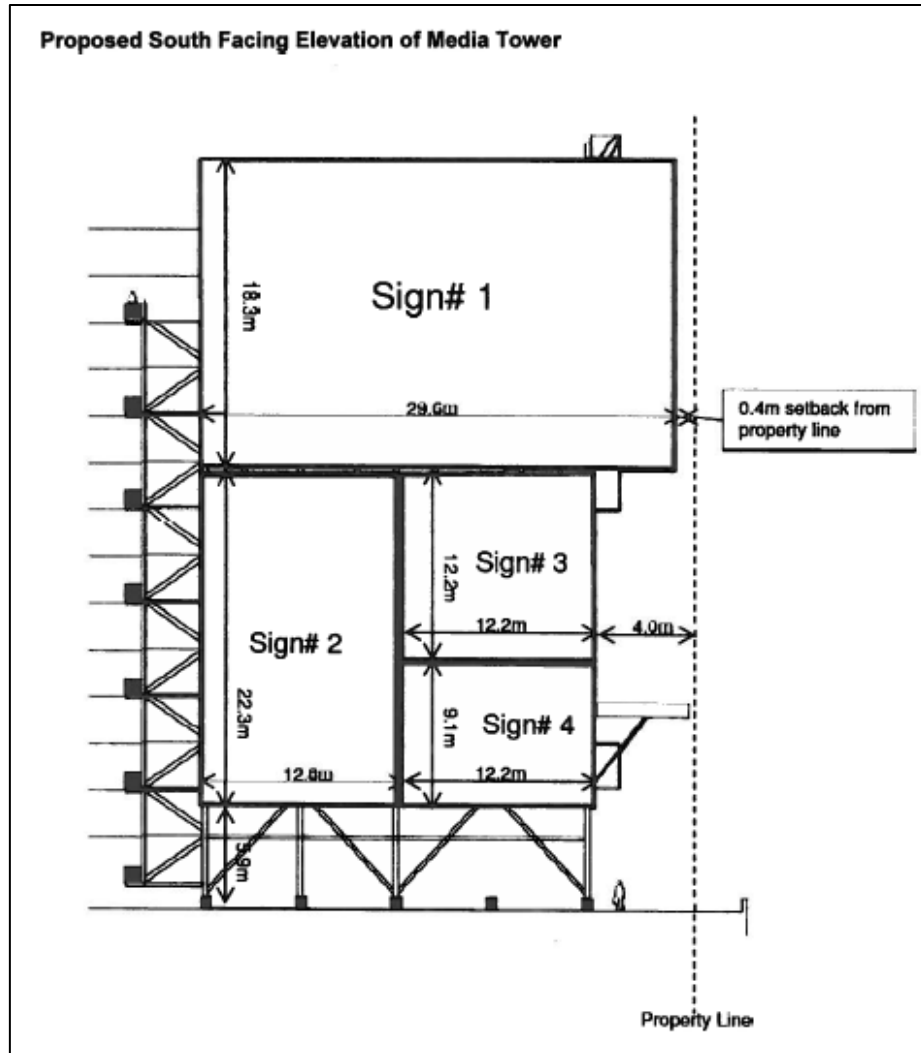
(2) As delineated on the diagrams indicated at Subsection (3) as Proposed South Facing Elevation of Media Tower and Proposed North Facing Elevation of Media Tower, on the north-facing elevation of the media tower:

(a) One (1) sign face, described as Sign #5, provided:

- i. The sign face shall be irregular-shaped, as delineated on the diagram indicated at Subsection H(3) as Proposed North Facing Elevation of Media Tower;
- ii. The overall horizontal dimension shall not exceed 29.60 metres;
- iii. The overall vertical dimension shall not exceed 31.4 metres;
- iv. The overall sign face area shall not exceed 930 square metres;
- v. The sign face may only display static copy;
- vi. The sign face shall be set back not less than 0.4 metres from the easterly street line;
- vii. The highest point of the sign face from the top of the roof shall not exceed 47.5 metres;
- viii. The sign face shall contain no more than twelve (12) panels;
- ix. Each panel shall be not less than 72 square metres;

- x. Each panel shall not exceed 648 square metres;
- xi. No panel shall exceed a horizontal measurement of 29.6 metres; and
- xii. No panel shall exceed a vertical measurement of 27 metres.

(3) Proposed South Facing Elevation of Media Tower and Proposed North Facing Elevation of Media Tower



5. The City Hall Nathan Philip Square Special Sign District – CHNPS-SSD may contain the following first party signs:

(A) An overhanging structure sign provided:

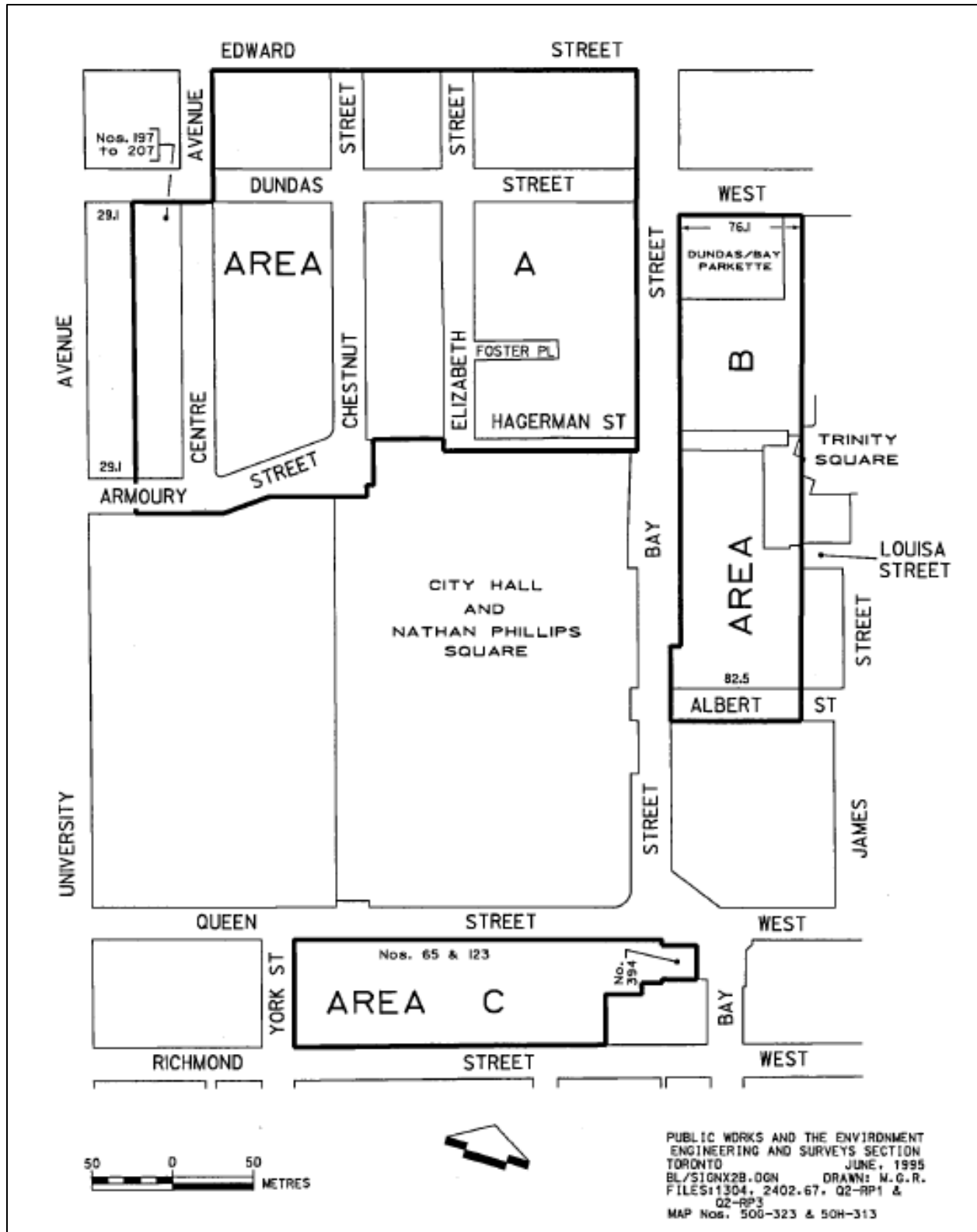
- (1) The sign shall not be erected on an overhanging structure located above the second storey of a building, or exceed a height of 10 metres, whichever is lesser;
- (2) Where erected at the first and second storey, the sign shall not extend above the sill of the lowest window on a wall of the second storey; or extend 0.8 metre above the first storey, whichever is lesser;
- (3) The sign shall not exceed 25 square metres or the following, whichever is lesser:
 - [1] Where the overhanging structure is located at the first storey of a building, the total sign face area of all signs erected on any part of the overhanging structure shall not exceed 50 percent of the external surface area of that part of the overhanging structure;
 - [2] Where the overhanging structure is located at the second storey of a building, the total sign face area of all signs erected on any part of the overhanging structure shall not exceed 25 percent of the external surface area of that part of the overhanging structure;
- (4) Subsections (3)[1] and [2] do not apply where the sign is displayed in whole or in part above, below, or extending beyond the overhanging structure;
- (5) Where the sign is displayed in whole or in part above the overhanging structure, it shall not extend more than one metre above the overhanging structure; and
- (6) The sign shall not extend beyond either end of the wall from which the overhanging structure projects.
- (7) If the sign is located on the south elevation of a building in Area A, on the south and west elevations of a building in Area B or on the east elevation of building located on Centre Street, Chestnut Street or Elizabeth Street, as depicted in the Map indicated at subsection 5G:
 - (1) The sign must be identification purposes only;
 - (2) The height shall not exceed 10 metres; and
 - (3) The sign shall not be illuminated, except for signs erected on a building within the lands bounded by Dundas Street West, Bay Street, Centre Avenue and Edward Street.
- (h) If the sign is located on the north elevation of a building in Area C, the sign must be for the purpose of identification or the purpose of direction.

- (B) A ground sign providing direction erected at a point of vehicular ingress and egress to a premises provided:
- (a) The sign face area shall not exceed 0.5 square metre;
 - (b) The height shall not exceed 1.5 metres;
 - (c) The sign shall have no more than two sign faces; and
 - (d) There shall be no more than two such signs erected at each point of vehicular ingress and egress to the premises.
- (C) A ground sign, other than a sign providing direction permitted by Subsection B, provided:
- (a) There shall be no more than one such sign erected at each frontage;
 - (b) The sign face area shall not exceed 0.3 square metre for each 1.0 metre or part thereof of frontage at which the sign is erected to a maximum of 20.0 square metres;
 - (c) The height shall not exceed:
 - [1] 3.5 metres when erected at a frontage less than or equal to 20 metres;
 - [2] 5.0 metres when erected at a frontage more than 20 metres but less than or equal to 30 metres;
 - [3] 6.0 metres when erected at a frontage more than 30 metres but less than or equal to 40 metres;
 - [4] 8.0 metres when erected at a frontage more than 40 metres but less than or equal to 60 metres; or
 - [5] 10.0 metres when erected at a frontage more than 60 metres.
 - (d) The sign shall have no more than two sign faces;
 - (e) The sign shall not be erected within 2.0 metres of any property line; and
 - (f) The sign shall not be erected within 6.0 metres of the intersection of two street lines.
- (D) A wall sign displaying the logo or corporate symbol of a business located on the premises provided:
- (a) The sign shall only be erected on an office building containing 10 or more storeys;
 - (b) There shall be no more than one sign erected on each wall of a building to a maximum of two signs;
 - (c) The sign shall only be erected on the uppermost storey, mechanical penthouse, or parapet wall of a building;

- (d) The sign face area shall not exceed 25 square metres or 20 percent of the area of the wall at the uppermost storey, mechanical penthouse or parapet wall on which the sign is erected, whichever is less;
 - (e) The vertical dimension of the sign shall not exceed 3.0 metres;
 - (f) The sign shall not extend beyond either end of the wall on which it is erected; and
 - (f) The sign must not be located on the south elevation of a building in Area A, on the south and west elevations of a building in Area B, or on the east elevation of building located on Centre Street, Chestnut Street or Elizabeth Street, as depicted in in the Map indicated at subsection 5G.
- (E) A wall sign, other than a sign displaying a logo or corporate symbol permitted by Subsection D, provided:
- (a) The sign shall not be erected above the second storey or exceed a height of 10 metres, whichever is less;
 - (b) Where erected at the first storey, the height shall not exceed 1.5 times the vertical distance between grade and the top boundary of the first storey of the building wall upon which the sign is located or 0.8 metres above the first storey, whichever is less and the sign shall not extend above the sill of the lowest window at the second storey of the wall on which the sign is erected;
 - (c) The total sign face area of all wall signs erected at the first storey shall not exceed 20 percent of the area of the wall at the first storey on which the signs are erected;
 - (d) The total sign face area of all wall signs erected at the second storey shall not exceed 10 percent of the area of the wall at the second storey on which the signs are erected;
 - (e) The sign shall not extend above the wall or parapet wall of a building;
 - (f) The sign shall not extend beyond either end of the wall upon which it is erected; and
 - (g) If the sign is located on the south elevation of a building in Area A, on the south and west elevations of a building in Area B or on the east elevation of building located on Centre Street, Chestnut Street or Elizabeth Street, as depicted in the Map indicated at subsection 5G:
 - (1) The sign must be identification purposes only;
 - (2) The height shall not exceed 10 metres; and
 - (3) The sign shall not be illuminated, except for signs erected on a building within the lands bounded by Dundas Street West, Bay Street, Centre Avenue and Edward Street.

- (h) If the sign is located on the north elevation of a building in Area C, as depicted in the Map indicated at subsection 5G, the sign must be for the purpose of identification or the purpose of direction.
- (F) A projecting sign provided:
- (a) The sign shall not be erected above the second storey, or exceed the height of 10 metres;
 - (b) The sign shall not project more than 1.0 m from the wall on which the sign is erected;
 - (c) The sign shall have no more than two sign faces;
 - (d) Where the sign has two sign faces, the sign faces shall be back to back;
 - (e) Each sign face shall be perpendicular to the wall of the building on which the sign is erected;
 - (f) The sign face area shall not exceed 0.1 square metre for each 1.0 metres or part thereof of frontage or 1.0 square metre, whichever is lesser;
 - (g) The sign shall not be erected closer than 6.0 metres, measured horizontally from any point on the sign, from another projecting sign on the same premises;
 - (h) The sign may be illuminated provided it is erected a minimum 10 metres from a residential window on the same storey; and
 - (i) If the sign is located on the south elevation of a building in Area A, on the south and west elevations of a building in Area B or on the east elevation of building located on Centre Street, Chestnut Street or Elizabeth Street, as depicted in the Map indicated at subsection 5G
 - (1) The sign must be identification purposes only;
 - (2) The height shall not exceed 10 metres; and
 - (3) The sign shall not be illuminated, except for signs erected on a building within the lands bounded by Dundas Street West, Bay Street, Centre Avenue and Edward Street.
 - (j) If the sign is located on the north elevation of a building in Area C, as designated in the Map indicated at subsection 5G the sign must be for the purpose of identification or the purpose of direction.

G. Area Map - City Hall Nathan Philip Square Special Sign District – CHNPS-SSD



6. The University Avenue Special Sign District – UA-SSD - may contain the following first party signs:

A. A wall sign displaying the logo or corporate symbol of a business located on the premises provided:

- (1) The sign shall only be erected on an office building containing 10 or more storeys;
- (2) The sign shall only be erected on a wall that fronts a street;
- (3) There shall be no more than one sign erected on each wall of a building to a maximum of two signs;
- (4) The sign shall only be erected on the uppermost storey, mechanical penthouse, or parapet wall of a building;
- (5) The vertical dimension of the sign shall not exceed 3.0 metres.
- (6) The sign face area shall not exceed 25.0 square metres;
- (7) The sign shall not extend above the wall on which it is erected;
- (8) The sign shall not extend beyond either end of the wall on which it is erected; and,
- (9) The premises is designated as within CR (UA-SSD) in the map contained in subsection 6K.

B. A wall sign other than a sign displaying a logo or corporate symbol permitted by Subsection A, provided:

- (1) The sign shall only be erected at the first storey;
- (2) Where erected at the first storey, the height shall not exceed 1.5 times the vertical distance between grade and the top boundary of the first storey of the building wall upon which the sign is located, and the sign shall not extend above the sill of the lowest window at the second storey of the wall on which the sign is erected;
- (3) The sign face area shall not exceed 2.5 square metres;
- (4) The total sign face area of all first party wall signs, window signs, and overhanging structure signs erected at the first storey of a building shall not exceed 15 percent of the area of the wall at the first storey on which the signs are erected and from which the overhanging structures project;
- (5) The sign shall not extend above the wall or parapet wall of a building;
- (6) The sign shall not extend beyond either end of the wall on which it is erected; and,
- (7) The premises is designated as within CR (UA-SSD) in the map contained in subsection 6K.

C. An overhanging structure sign provided:

- (1) The sign shall only be erected on an overhanging structure located at the first storey;
- (2) The total sign face area of all signs erected on any part of the overhanging structure shall not exceed 50 percent of the external surface area of that part of the overhanging structure;
- (3) Subsection A(3)(b) does not apply where the sign is displayed in whole or in part above, below, or extending beyond the overhanging structure;
- (4) Where the sign is displayed in whole or in part above the overhanging structure, it shall not extend more than one metre above the overhanging structure;
- (5) The sign shall not extend beyond either end of the wall from which the overhanging structure projects; and,
- (6) The premises is designated as within CR (UA-SSD) in the map contained in subsection 6K.

D. A projecting sign provided:

- (1) The sign shall not be erected above the first storey;
- (2) Where the sign is erected at the first storey, the height shall not exceed 4.5 metres;
- (3) The sign shall not project more than 1.0 metres from the wall on which the sign is erected;
- (4) The sign shall have no more than two sign faces;
- (5) Where the sign has two sign faces, the sign faces shall be displayed back to back;
- (6) Each sign face shall be perpendicular to the wall of the building on which the sign is erected;
- (7) The sign face area shall not exceed 1.0 square metre;
- (8) The sign shall not be erected closer than 6.0 metres, measured horizontally from any point on the sign, from another projecting sign on the same premises; and,
- (9) The premises is designated as within CR (UA-SSD) in the map contained in subsection 6K.

E. A ground sign provided:

- (1) There shall be no more than one such sign erected at each frontage;
- (2) The sign face shall not exceed 2.5 square metres;
- (3) The height shall not exceed 2.5 metres;
- (4) The sign shall have no more than two sign faces;
- (5) The sign shall not be erected within 2.0 metres of any property line;

- (6) The sign shall not be erected within 6.0 metres of the intersection of two street lines; and,
 - (7) The premises is designated as within CR (UA-SSD) in the map contained in subsection 6K.
- F. A ground sign providing direction erected at a point of vehicular ingress and egress to a premises provided:
 - (1) The sign face area shall not exceed 0.5 square metres;
 - (2) The height shall not exceed 1.5 metres;
 - (3) The sign shall have no more than two sign faces;
 - (4) There shall be no more than two such signs erected at each point of vehicular ingress and egress to the premises; and,
 - (5) The premises is designated as within CR (UA-SSD) in the map contained in subsection 6K.
- G. A wall sign provided:
 - (1) The sign shall only be erected at the first storey;
 - (2) The sign face area shall not exceed 2.5 square metres;
 - (3) The total sign face area of all first party wall signs, window signs, and overhanging structure signs erected at the first storey of a building shall not exceed 15 percent of the area of the wall at the first storey on which the signs are erected and from which the overhanging structures project;
 - (4) The sign shall not extend above the wall or parapet wall of a building;
 - (5) The sign shall not extend beyond either end of the wall on which it is erected; and,
 - (6) The premises is designated as within I (UA-SSD) in the map contained in subsection 6K.
- H. An overhanging structure sign provided:
 - (1) The sign shall only be erected on an overhanging structure located at the first storey;
 - (2) The total sign face area of all signs erected on any part of the overhanging structure shall not exceed 50 percent of the external surface area of that part of the overhanging structure;
 - (3) Subsection B(2)(b) does not apply where the sign is displayed in whole or in part above, below, or extending beyond the overhanging structure;
 - (4) Where the sign is displayed in whole or in part above the overhanging structure, it shall not extend more than one metre above the overhanging structure;

- (5) The sign shall not extend beyond either end of the wall from which the overhanging structure projects; and
- (6) The premises is designated as within I (UA-SSD) in the map contained in subsection 6K.

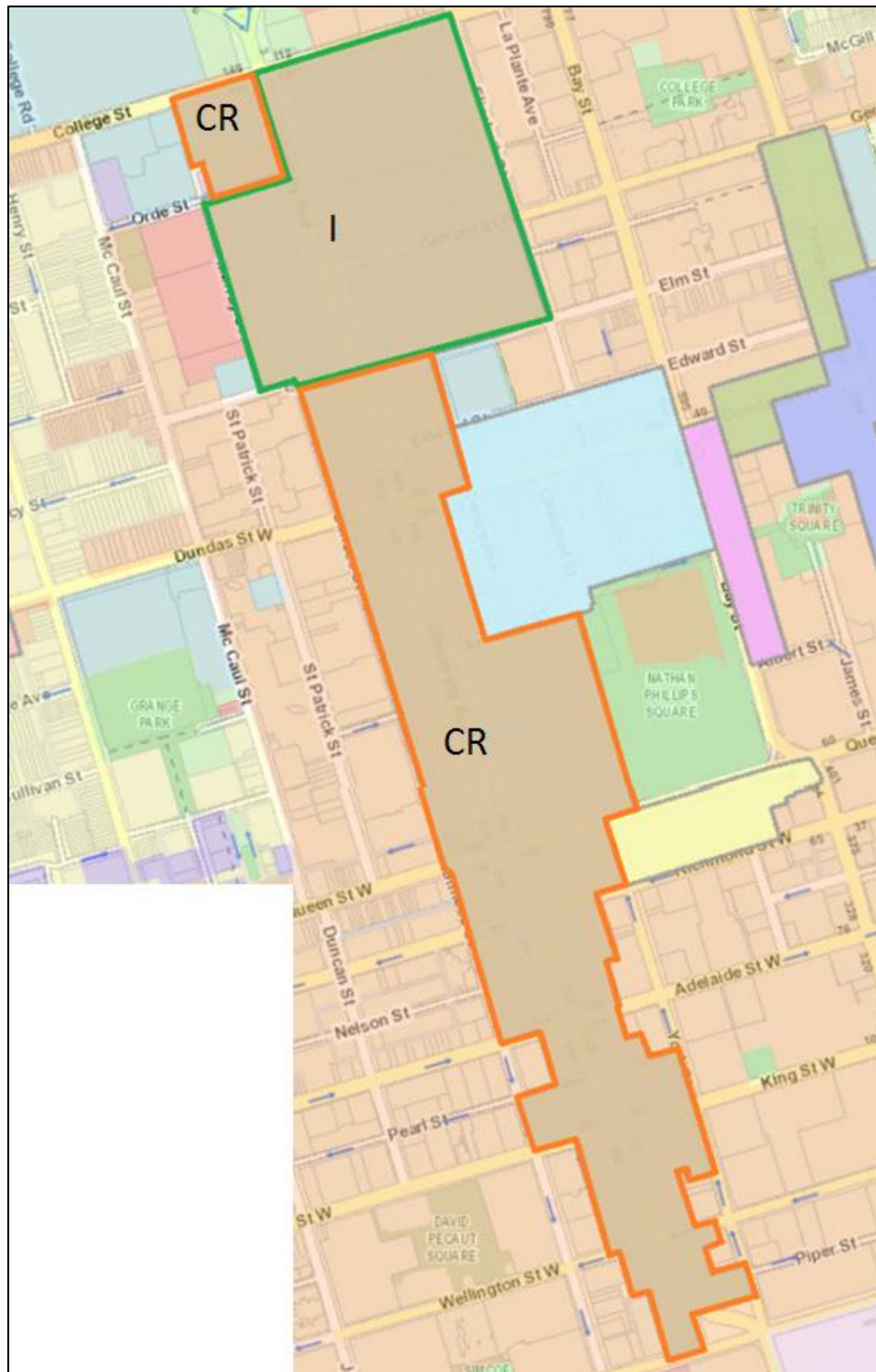
I. A ground sign provided:

- (1) There shall be no more than one such sign erected at each frontage;
- (2) The sign face shall not exceed 2.5 square metres;
- (3) The height shall not exceed 2.0 metres;
- (4) The sign shall have no more than two sign faces;
- (5) The sign shall not be erected within 2.0 metres of the intersection of two street lines;
- (6) The sign shall not be erected within 6.0 metres of the intersection of two street lines; and
- (7) The premises is designated as within I (UA-SSD) in the map contained in subsection 6K.

J. A ground sign providing direction erected at a point of vehicular ingress and egress to a premises provided:

- (1) The sign face area shall not exceed 0.5 square metres;
- (2) The height shall not exceed 1.5 metres;
- (3) The sign shall have no more than two sign faces;
- (4) There shall be no more than two such signs erected at each point of vehicular ingress and egress to the premises; and
- (5) The premises is designated as within I (UA-SSD) in the map contained in subsection 6K.

K. District Map - UA-SSD



City of Toronto Municipal Code Chapter 694 - Signs - Schedule 'A'



Ward 20:
Trinity-Spadina

Key Map



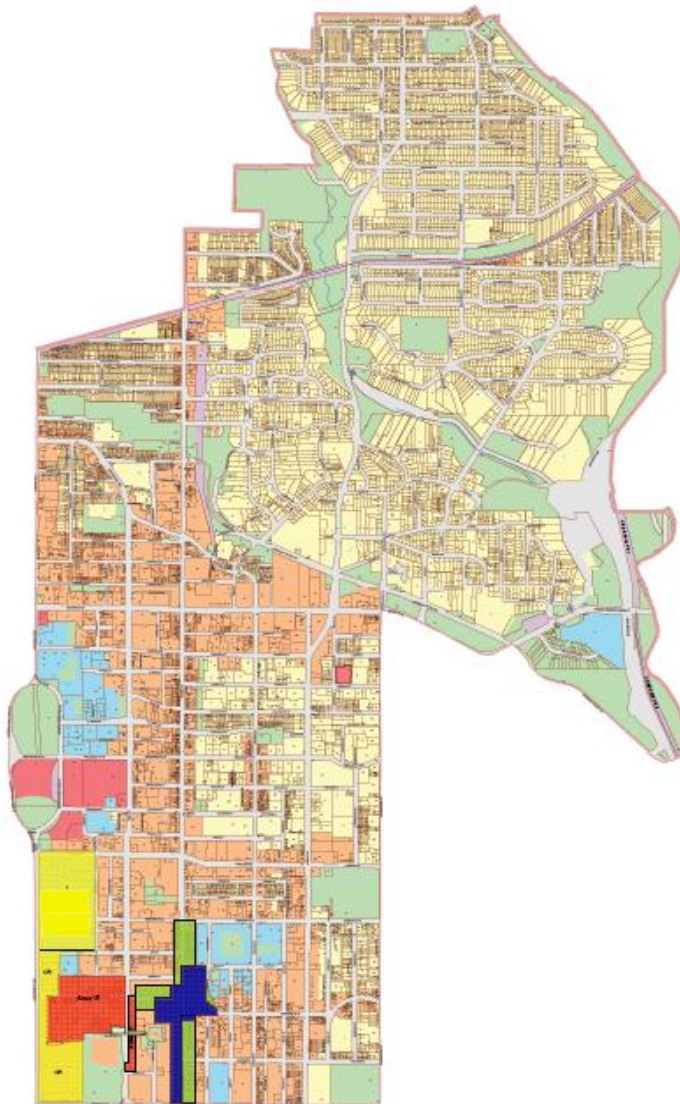
Scale 1:4000

Legend:

Residential District	Utility District
Residential Apartment District	Gardiner Gateway Special Sign District
Commercial District	Chinatown Special Sign District
Commercial Residential District	Downtown Yonge Special Sign District
Employment District	Dundas Square Special Sign District
Employment Industrial Office District	University Avenue Special Sign District
Institutional District	City Hall and Nathan Phillips Square
Open Space District	Entertainment District Special Sign District

June 2016

City of Toronto Municipal Code Chapter 694 - Signs - Schedule 'A'



Ward 27:

Toronto Centre-Rosedale

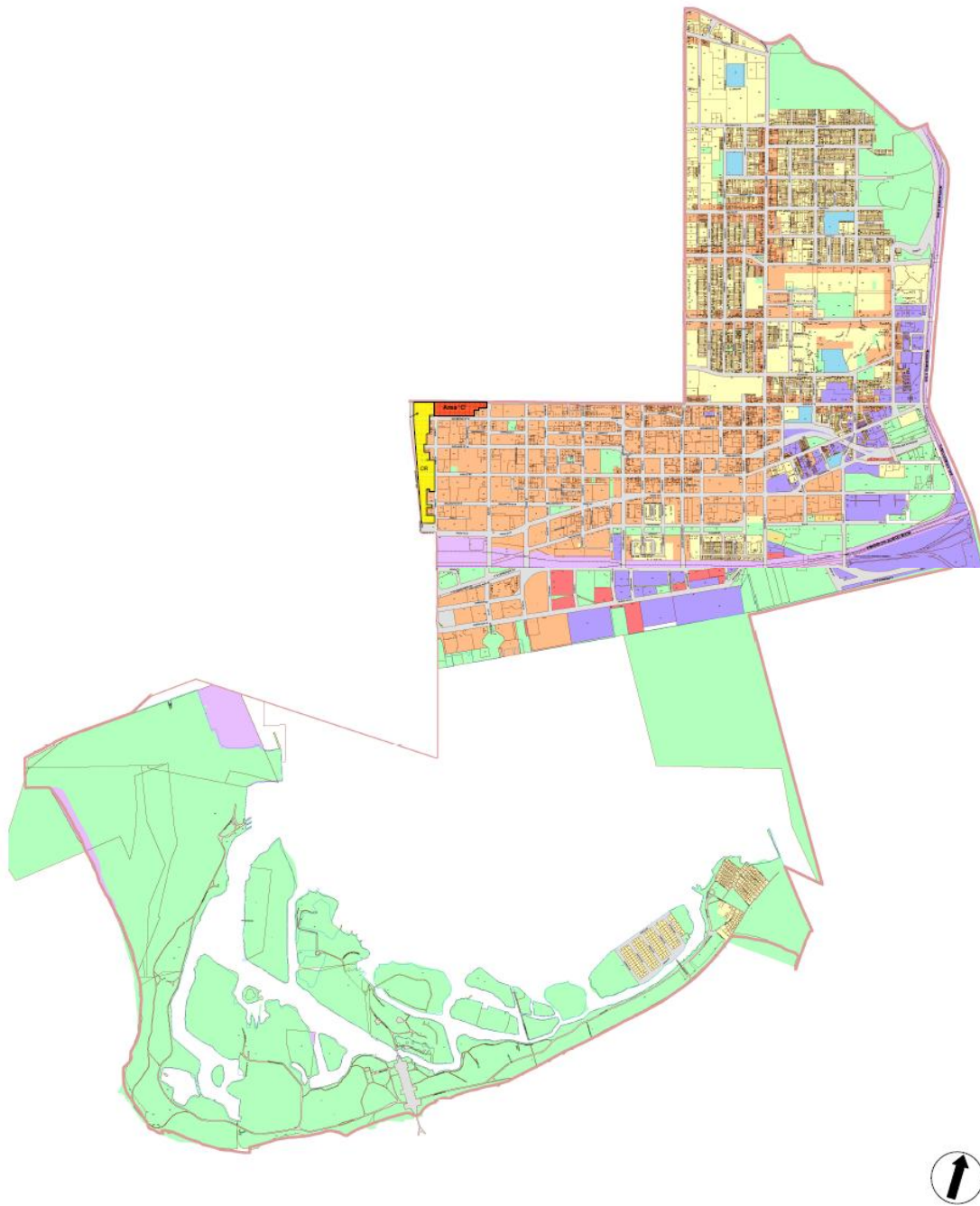
Key Map



Legend:

Residential District	Utility District
Residential Apartment District	Gardiner Gateway Special Sign District
Commercial District	Chinatown Special Sign District
Commercial Residential District	Downtown Yonge Special Sign District
Employment District	Dundas Square Special Sign District
Employment Industrial Office District	University Avenue Special Sign District
Institutional District	City Hall and Nathan Phillips Square Special Sign District
Open Space District	

City of Toronto Municipal Code Chapter 694 - Signs - Schedule 'A'



Ward 28:

Toronto Centre - Rosedale

Key Map



Legend:

Residential District	Utility District
Residential Apartment District	Gardiner Gateway Special Sign District
Commercial District	Chinatown Special Sign District
Commercial Residential District	Downtown Yonge Special Sign District
Employment District	Dundas Square Special Sign District
Employment Industrial Office District	University Avenue Special Sign District
Institutional District	City Hall and Nathan Phillips Square Special Sign District
Open Space District	