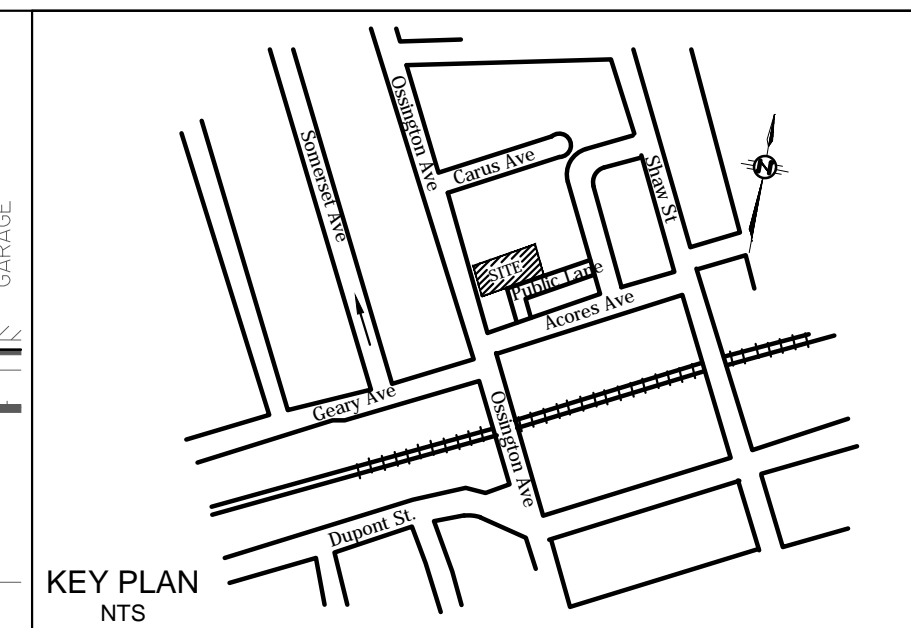
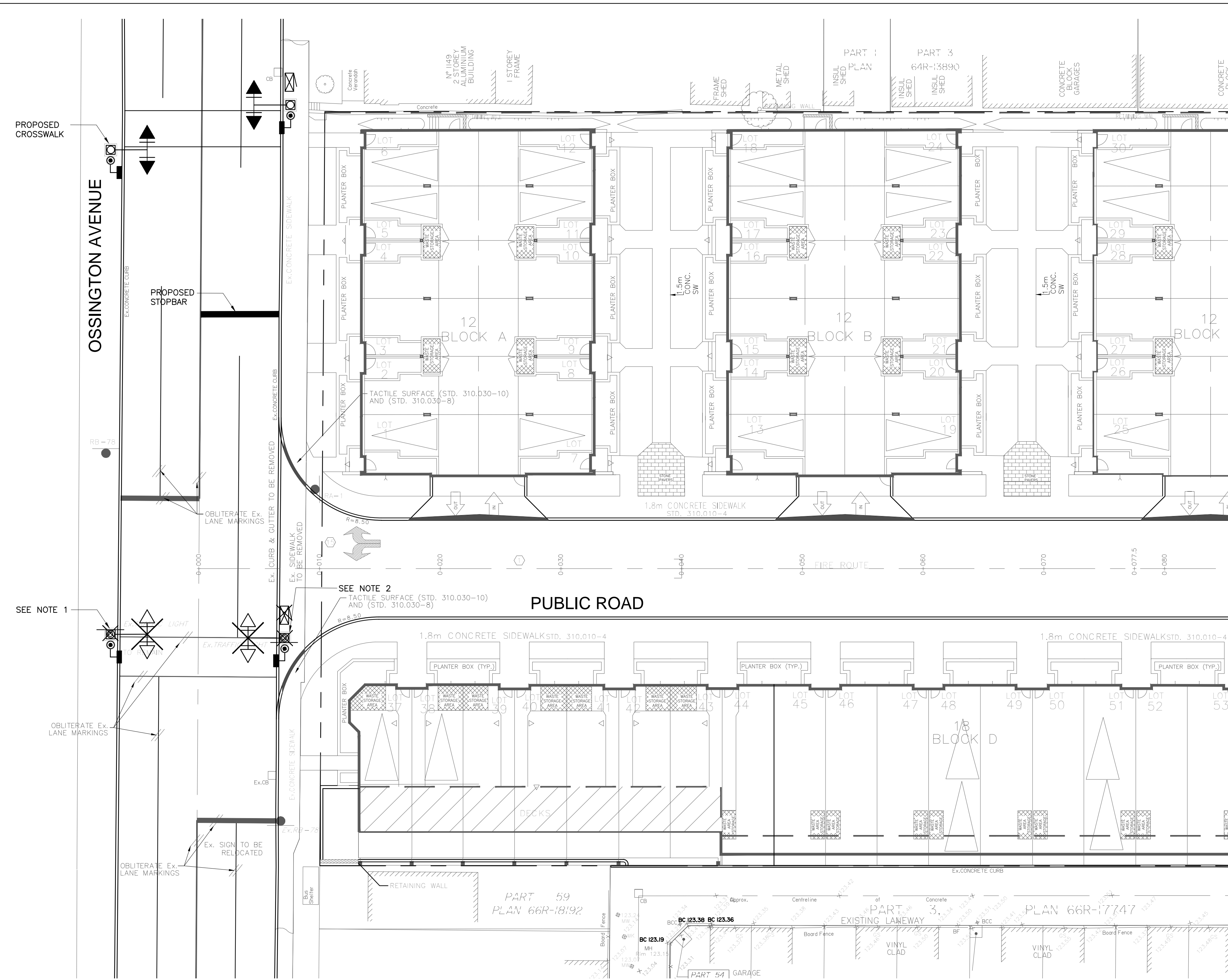


BILL OF MATERIAL				
DESCRIPTION	SPEC. No. STD. No.	UNIT	ESTIMATED QUANTITY	DRAWING REF. No.
UNDERGROUND DUCT				
FOOTINGS				
WIRING AND HYDRO HOOK-UP				
TRAFFIC SIGNAL POLES				
TRAFFIC SIGNAL MAST ARMS AND HEAD HANGERS				
DOUBLE ARM BRACKETS				
TRAFFIC SIGNAL HEADS AND PEDESTRIAN HEADS				
TRAFFIC CONTROLLER				
PEDESTRIAN PUSH BUTTONS				
TRAFFIC ACTUATION EQUIPMENT				
TRANSMIT LOOP				
SPECIAL PROVISIONS				



NOTES:

1. TRAFFIC SIGNAL EQUIPMENT TO BE RELOCATED AS SHOWN
2. TRAFFIC SIGNAL POLE TO BE RELOCATED AS SHOWN

<ul style="list-style-type: none"> ● ELECTRICAL HANDWELL ○ EXISTING ELECTRICAL HANDWELL EMH □ ELECTRICAL MANHOLE --- 75 mm RIGID PVC UNDERGROUND DUCT - - - - - EXISTING 75 mm UNDERGROUND DUCT - - - - - 75mm TSU - - - - - ABANDONED 75 mm UNDERGROUND DUCT - - - - - 100 mm RIGID PVC UNDERGROUND DUCT - - - - - 50 mm RIGID PVC UNDERGROUND DUCT - - - - - 25 mm RIGID PVC UNDERGROUND DUCT --- OVERHEAD CABLE --- OVERHEAD CABLE WITH IDENTIFICATION CODE --- OVERHEAD CABLE AND SPAN WIRE 	<ul style="list-style-type: none"> □ BASE MOUNTED TRAFFIC POLE ⊙ BASE MOUNTED ELLIPTICAL POLE ⊠ REINFORCED BAY WITH TRAFFIC POLE ⊙ DIRECT BURIED TRAFFIC POLE ● E ELECTRIC (HYDRO) POLE ● LS EXISTING STREET LAMP POLE ● EXISTING STREET LAMP POLE WITH TRAFFIC SIGNAL HARDWARE EQUIPMENT ● BASE MOUNTED TRAFFIC POLE WITH STREET LAMP 	<ul style="list-style-type: none"> ⊠ HIGHWAY SIGNAL HEAD (30 cm RED) WITH BACKBOARD AND MAST ARM ⊠ HIGHWAY SIGNAL HEAD (30 cm RED) WITH BACKBOARD AND MOUNTING BRACKET ⊠ HIGHWAY SIGNAL HEAD (30 cm RED) WITH BACKBOARD AND OVERHEAD CABLE ⊠ HIGHWAY SIGNAL HEAD WITH BACKBOARD (ALL 30 cm LENSES) ⊠ SPECIAL HEAD (TYPE ○ WITH ARROW INDICATION AND BACKBOARD) (ALL 30 cm LENSES) ⊠ STANDARD SIGNAL HEAD WITH BACKBOARD X REMOVAL 	<ul style="list-style-type: none"> ⊠ PEDESTRIAN SIGNAL HEAD ⊠ AUDIBLE PEDESTRIAN SIGNAL HEAD ⊠ BASE MOUNTED POLE AND PUSHBUTTON FOR AUDIBLE SIGNAL ⊠ AUDIBLE PEDESTRIAN SIGNAL ⊠ PEDESTRIAN PUSHBUTTON ⊠ ILLUMINATED PEDESTRIAN PUSHBUTTON POST WITH PEDESTRIAN PUSHBUTTON CORRECT BURIED ⊠ SINGLE GUY WITH SINGLE ANCHOR ⊠ DOUBLE GUY WITH SINGLE ANCHOR ⊠ DOUBLE GUY WITH DOUBLE ANCHOR ⊠ SINGLE GUY WITH SIDEWALK STRUT AND SINGLE ANCHOR 	<ul style="list-style-type: none"> ⊠ CONTROLLER CABINET FRONT DOOR OPENS ON SIDE INDICATED → GROUND PLATE OR R/D ⊠ DIPOLE LOOP DETECTOR ⊠ QUADRAPOLE LOOP DETECTOR ⊠ INDUCTIVE LOOP DETECTOR WITH BICYCLE DETECTION PAVEMENT MARKINGS GUIDE DOTS ⊠ PARKING METER ⊠ HYDRANT ⊠ MANHOLE 	<ul style="list-style-type: none"> ⊠ TC CONTROLLER CABINET ⊠ TP PROPOSED TRAFFIC SIGNAL POLE ⊠ PPB PEDESTRIAN PUSHBUTTON POLE ⊠ EPB EXISTING POLE ⊠ RM REMOVAL ⊠ HWB PROPOSED HANDWELL ⊠ HWE EXISTING HANDWELL ⊠ LDB LOOP DETECTOR ⊠ SDB SCOOT DETECTOR ⊠ TDB TRANSIT DETECTOR 	<p>① ② ③ ④ ⑤ ⑥ ⑦ ⑧A ⑧B ⑧C ⑧D ⑧E ⑧F ⑧G ⑧H ⑧I ⑧J ⑧K ⑧L ⑧M ⑧N ⑧O ⑧P ⑧Q ⑧R ⑧S ⑧T ⑧U ⑧V ⑧W ⑧X ⑧Y ⑧Z</p> <p>NOTE: (8A) (9A) PROTECTED SIMULTANEOUS LEFT TURNS FOLLOWED BY PERMISSIVE LEFT TURNS WITH AMBER ARROW. (10A) ADVANCED GREEN WITH GREEN ARROW.</p>
---	--	--	--	--	--	--

APPROVED	FDR APPROVAL	SIGNAL INSTALLATION
APPROVAL DATE	MUNICIPAL OFFICIAL	SIGNAL DESIGN RECOMMENDED
		APPROVED AS PER SECTION 144 (31) H.T.A.
REVISIONS	DATE	DRAWN
		DESCRIPTION OF REVISIONS
CONDOMINIUM TOWNHOUSE DEVELOPMENT 1145 OSSINGTON AVENUE, CITY OF TORONTO CONCEPTUAL TRAFFIC SIGNAL LAYOUT		
DESIGN	T.T.	DRAWN
SCALE	1:200	COUNCIL APPROVAL DATE
DATE	MAY 22/2015	DRAWING NUMBER
		EL-1