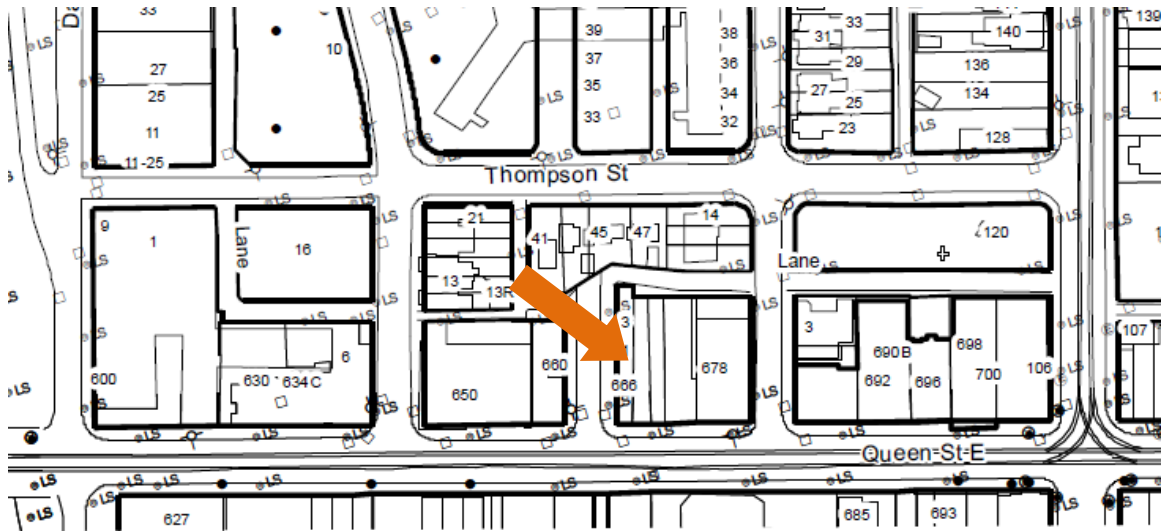


LOCATION MAP, PHOTOGRAPHS AND BACKGROUND:
666 QUEEN STREET EAST

ATTACHMENT NO. 2C



The **arrow** marks the location of 666 Queen Street East.
This location map is for information purposes only and is oriented with
North at the top. The exact boundaries of the property are not shown.



666 Queen Street East: showing the primary west and south elevations (HPS, 2015)

666 Queen Street East: Background

Located at the north east corner of Queen Street East and Munro Street, the James M. Purvis building (1890) is a three-storey, brick clad building in the Richardsonian Romanesque style. The building includes a shop at the corner and entrances to apartments at 1 Munro St. and 3 Munro St.

James M. Purvis was a flour merchant who purchased the vacant property from William W Lamb in 1889, constructed the building in 1890 and retained ownership until 1902 when John R. Ward, also a flour merchant, occupied the premises. Purvis took advantage of the long narrow corner site to create apartments with entrances from the adjacent Munroe Street.

The building features the Romanesque style popular on Queen Street East and evident in the former Smith Block buildings and the former Dingman's Hall/Broadview Hotel. Here it is seen in the original various arched windows, a single large one with an elliptical fanlight at the second level and two smaller semi-circular-headed windows on the third floor. The basket weaves patterning created by rough-surfaced brick between the second and third floors and the rough hewn sills as well as the projecting corner pier are other characteristic elements of the style. The Munro St. elevations are much plainer but feature the rough hewn sills. The segmental-arched heads of the doorways and windows are period details. The shop features a corner entrance with a steel column supporting the building above. This may have been an original arrangement and possibly integrated the corner pier above at the second and third floor levels. Some modifications to the ground floor elevation and the small square windows are later alterations. The brick cladding has been painted for several years and most recently updated with a Riverside mural featuring aspects of life on the Don River.