

PHOTOGRAPHS:
958 BROADVIEW AVENUE

ATTACHMENT NO. 2



Above, 1905 photographs showing the former Chester Public School (1891) south and east elevations, 1905 with the bell tower as originally constructed.

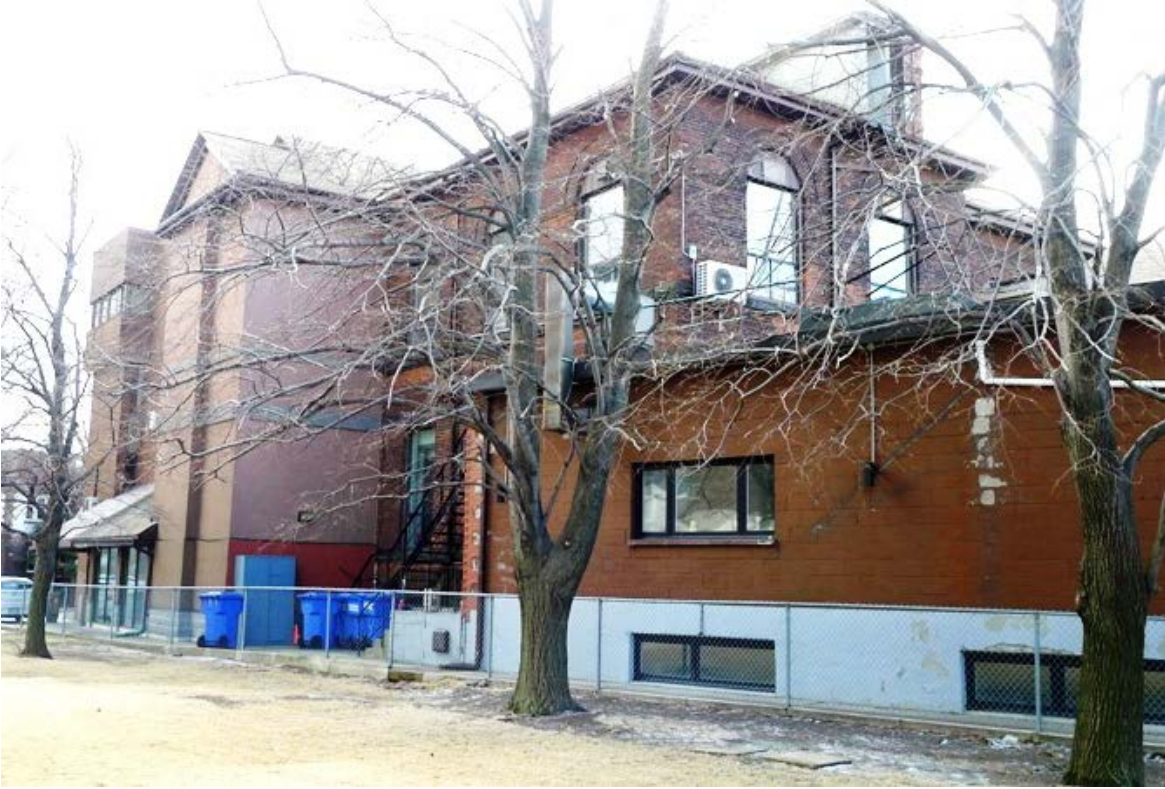
(TEC409, Baldwin Collection B13-16, Toronto Public Library [TPL])

Below: 1953 photograph of the former school showing the east and north elevations after the removal of the tower roof. *(James Victor Salmon (1911-58), Baldwin Room, S1-1236, TPL)*



Above, current photograph showing the alterations and additions to the former Chester Public School now Estonian House, as seen on the south elevation with the 1962-3 addition at the left and the bell tower with its roof removed on the right (*Heritage Preservation Services, [HPS]*)

Below: photograph showing the former Chester Public School, now Estonian House, as viewed from Broadview Avenue showing the original south and east elevations with the tower and school on the left and the 1975 addition on the right (*HPS*)



Above, photograph showing the north and west elevations with the 1975 addition at the far left, the 1995 entry and elevator tower addition (left) with the original school building in the centre and the 1962-3 addition with a single storey and a raised basement (HPS)