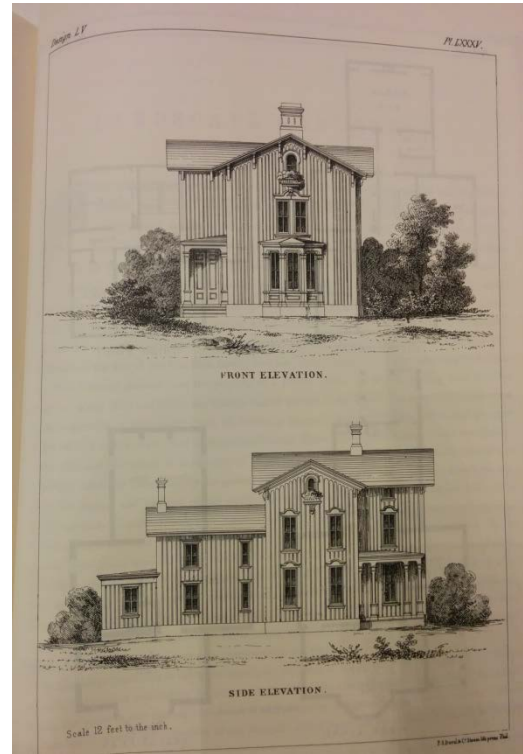




19th Century design for a cottage showing integrated front porch. Cottage shows similar detailing to the subject property From *Sloan's Victorian Buildings*, 1852-1853.



19th Century design for a cottage showing integrated front porch. Cottage shows similar detailing to the subject property From *Sloan's Victorian Buildings*, 1852-1853.



Plate 33- Designs for Porches from *Cummings' Architectural Details-Containing 387 designs and 967 illustrations of the various parts needed in the construction of buildings, public ... houses, stores, cottages, and other buildings*, 1873