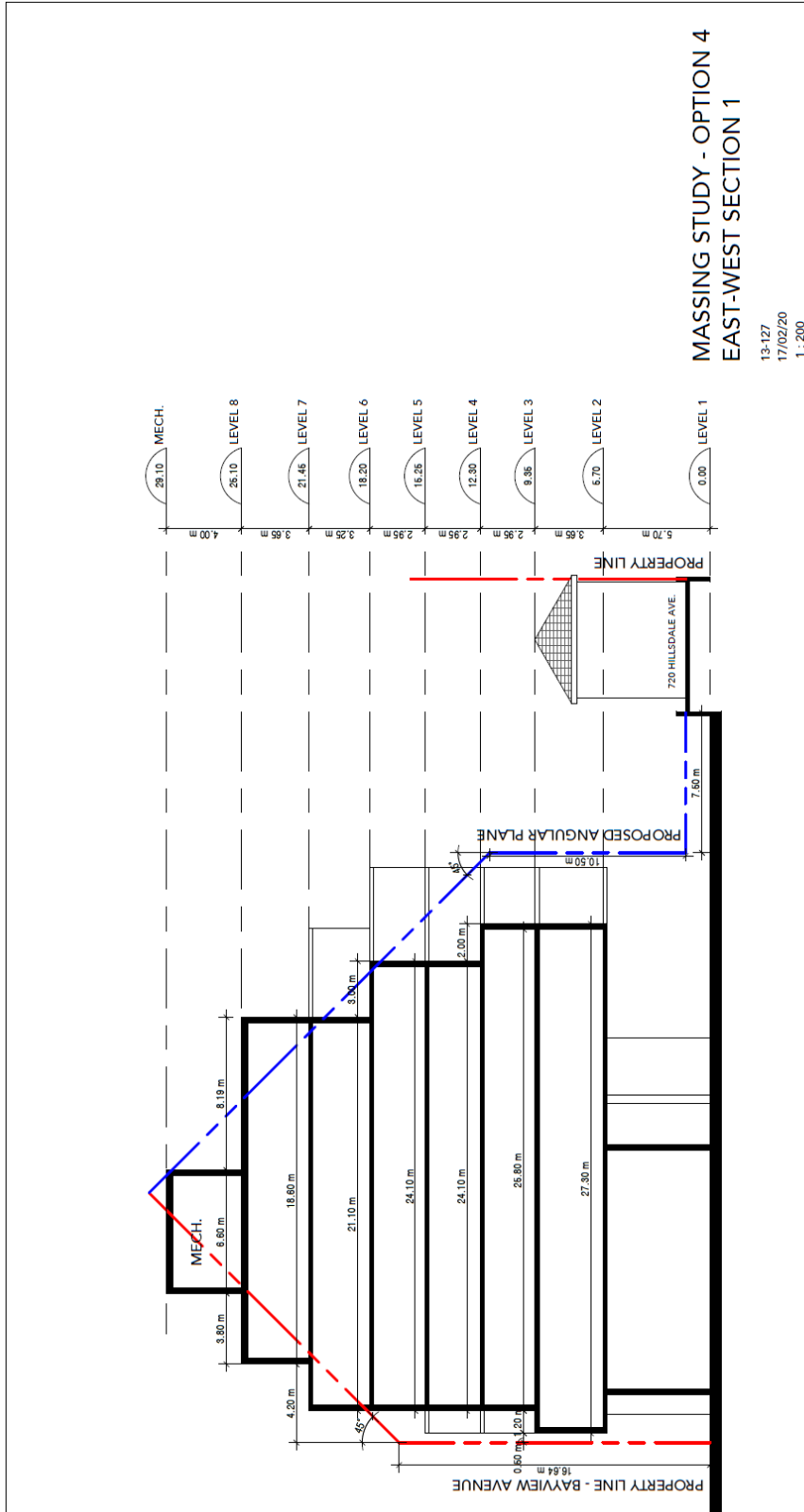


CC26.8 - Confidential Appendix A - made public on March 10, 2017
 Appendix A Drawing 1: East-West Section – Middle of Building (Revised Proposal)



MASSING STUDY - OPTION 4
 EAST-WEST SECTION 1

13-127
 17/02/20
 1 : 200

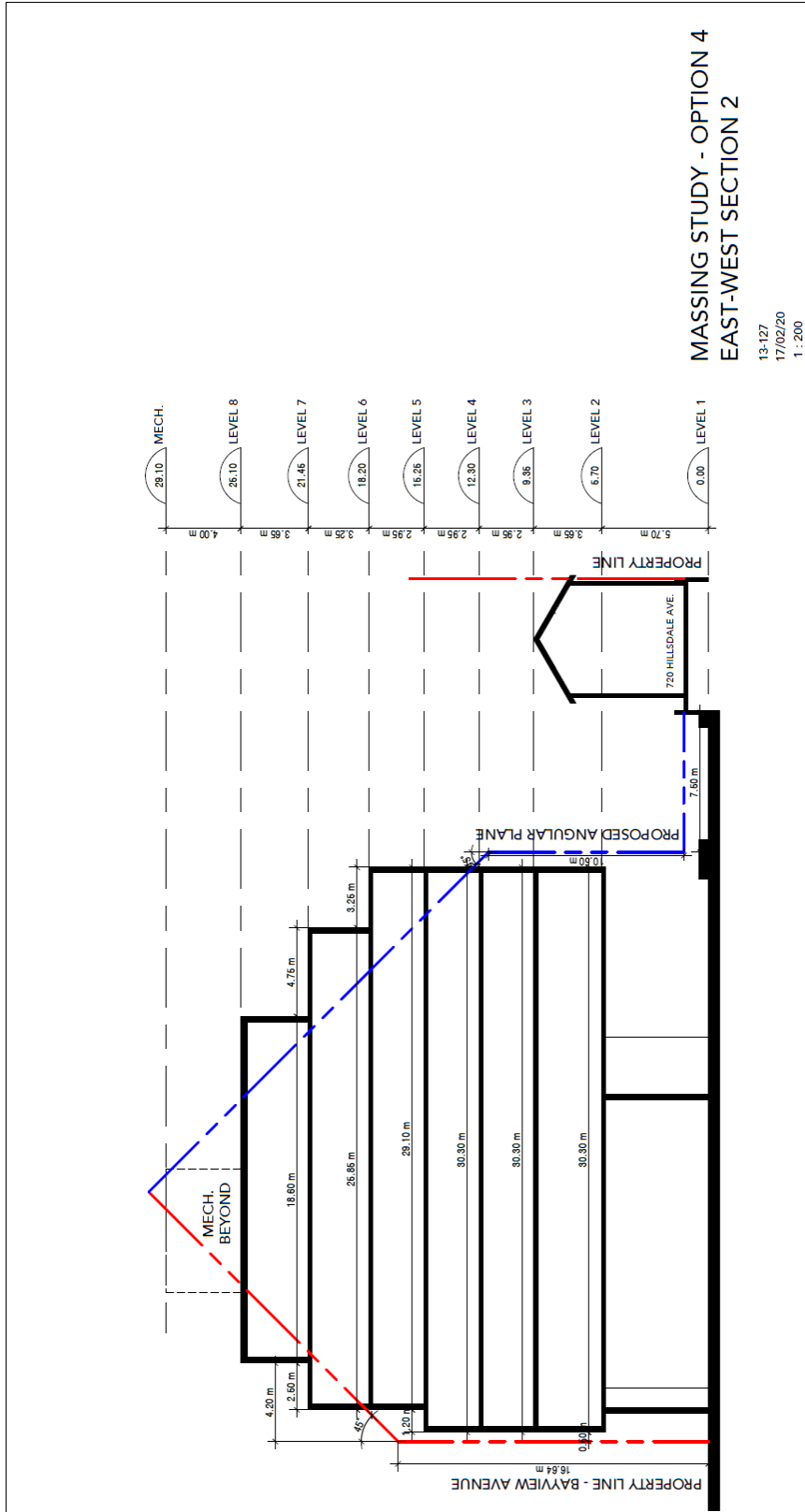
BAYVIEW & HILLSDALE REDEVELOPMENT

Kohn

Kohn Partnership Architects Inc.
 114 Spadina Avenue, Suite 801, Toronto ON M5V 2K6
 Tel: 416.703.6700 www.kohnarchitect.com

THE BROWN GROUP OF COMPANIES INC.

Appendix A Drawing 2: East-West Section – South End (Revised Proposal)



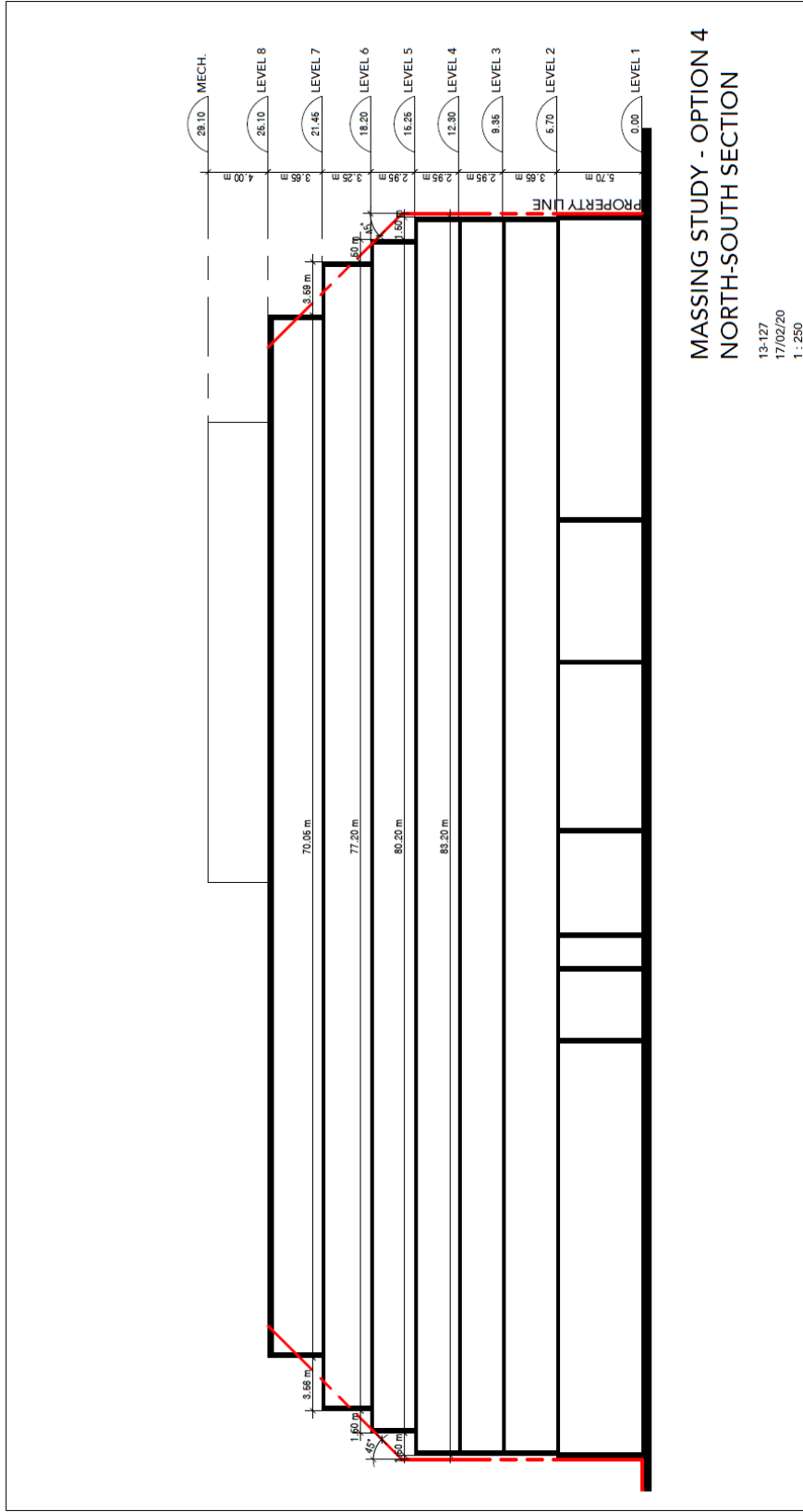
BAYVIEW & HILLSDALE REDEVELOPMENT



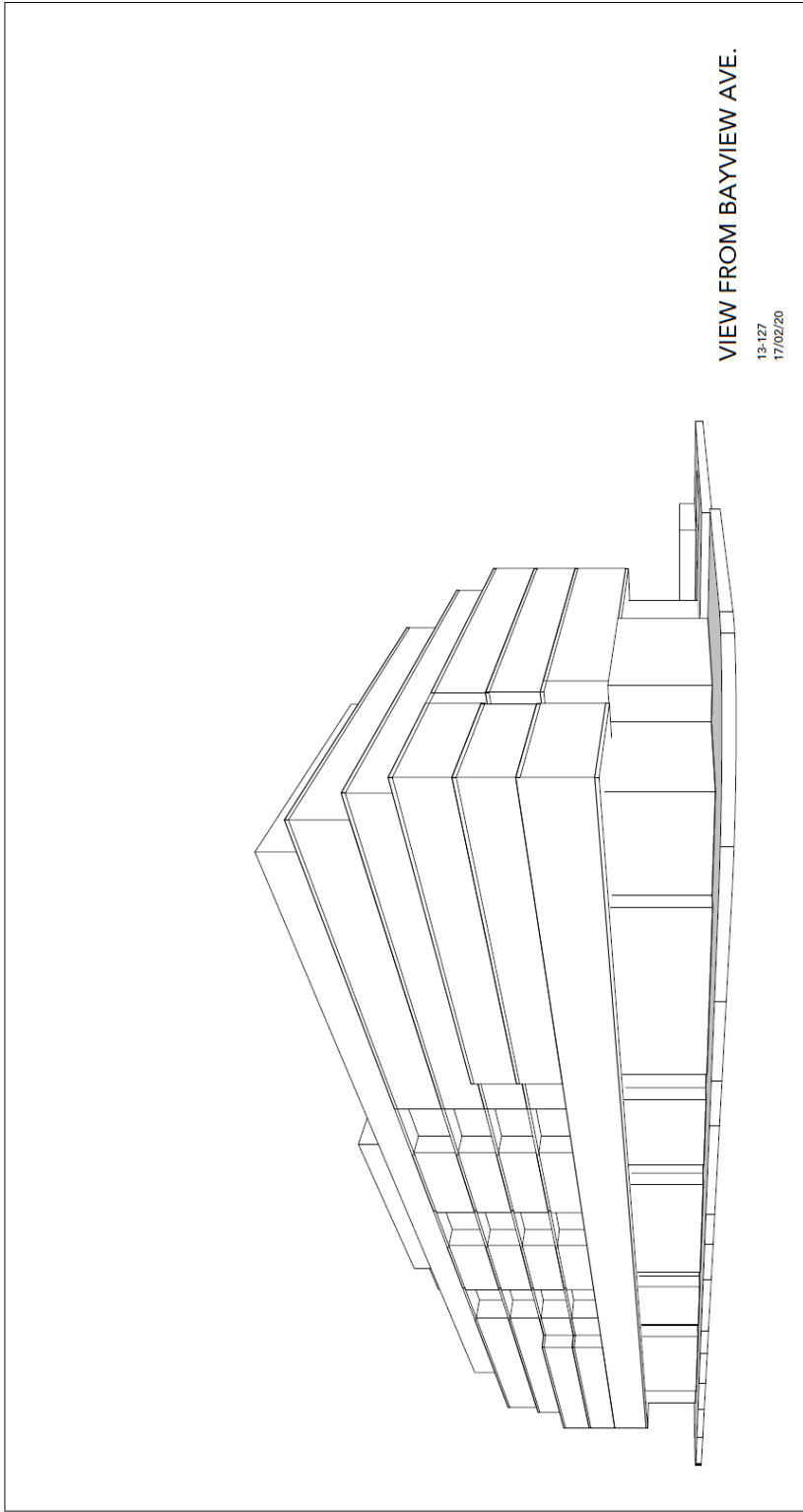
Kohn Partnership Architects Inc.
114 Spadina Avenue, Suite 501, Toronto ON M5V 2L6
Tel: 416.703.6700 www.kohnarchitects.com

THE BROWN GROUP OF COMPANIES INC.

Appendix A Drawing 3: North-South Section (Revised Proposal)



Appendix A Drawing 4: Site View from Bayview Avenue (Revised Proposal)



VIEW FROM BAYVIEW AVE.

13-127
17/02/20

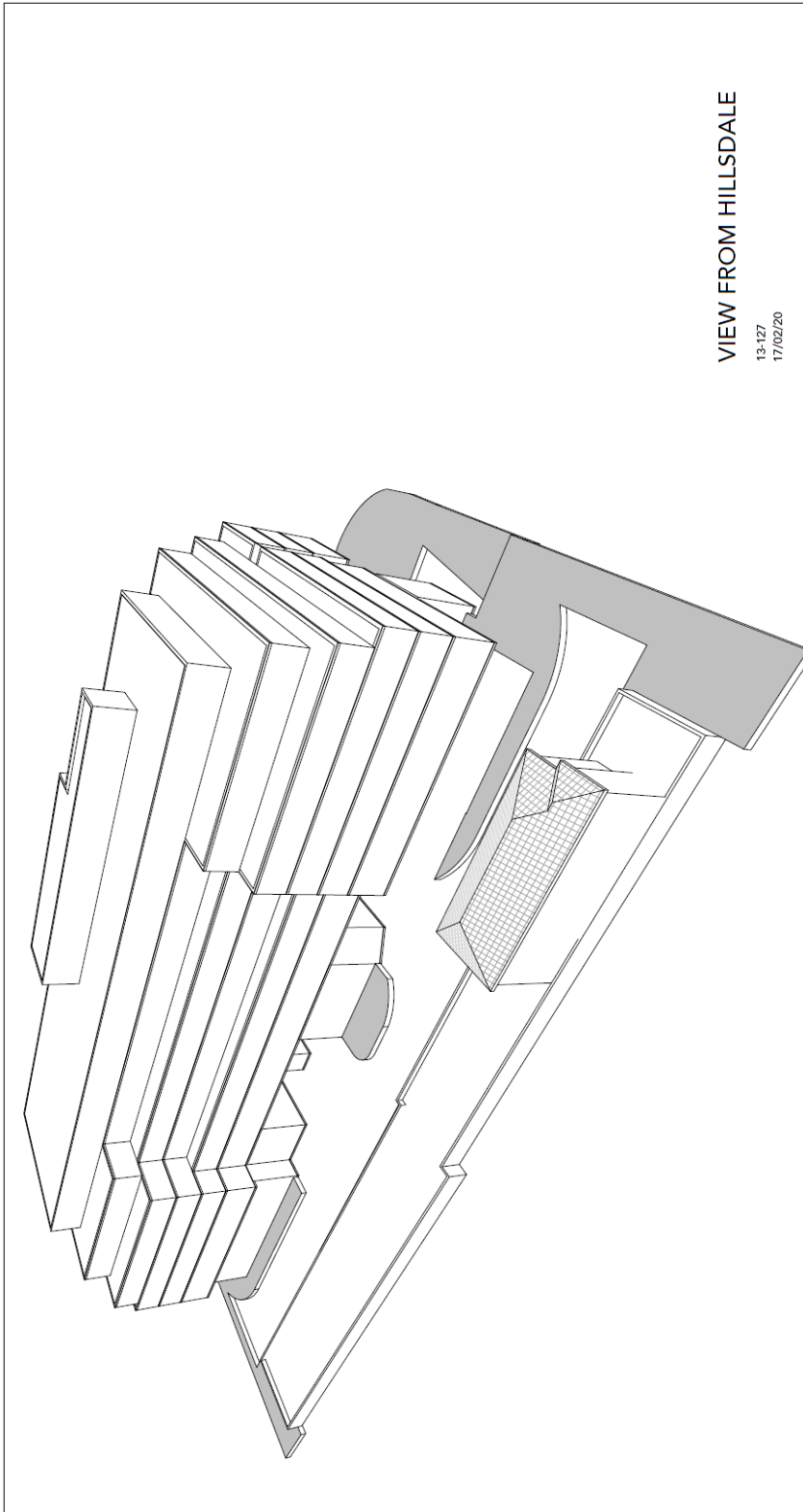
BAYVIEW & HILLSDALE REDEVELOPMENT

THE BROWN GROUP OF COMPANIES INC.

Kohn

Kohn Partnership Architects Inc.
150 Adelaide Ave., Suite 301, Toronto, ON M5V 2A6
Tel: 416-363-6700 www.kohnpartners.com

Appendix A Drawing 5: Site View from Hillsdale Avenue (Revised Proposal)



VIEW FROM HILLSDALE

13-127
17/02/20

BAYVIEW & HILLSDALE REDEVELOPMENT

Kohn

Kohn Partnerships Architects Inc.
116 Spadina Avenue, Suite 301, Toronto, ON M5V 2K5
Tel: 416.708.6700 www.kohnarchitects.com

THE BROWN GROUP OF COMPANIES INC.