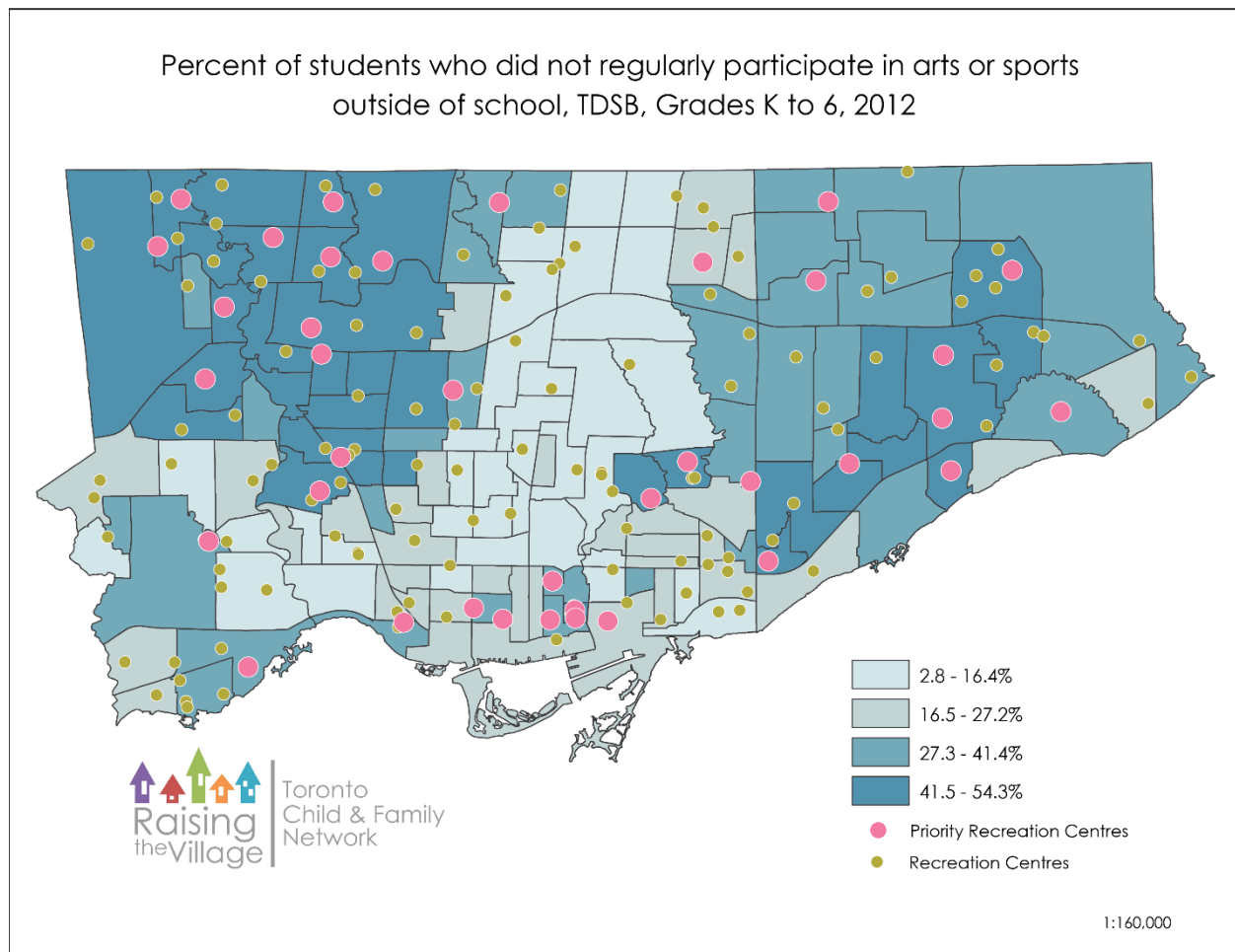


APPENDIX B: INFORMATION ON FREE CENTRE ANALYSIS

The indicator "Participation in arts and sports" is one of 28 child indicators included in Raising the Village. This indicator is based on the 2012 Toronto District School Board Parent Census and includes parents of Toronto District School Board students (Grades K to 6) who reported how often their child participates in arts or sports outside of school. The map below represents the percentage of students who do **not** participate in arts or sports by neighbourhood. The neighbourhoods in dark blue have between 41.5% and 54.3% of students who do not participate. All recreation centres are displayed as points with Free Centres in pink.



The Child & Family Inequities Score provides a summary measure of the socio-economic challenges that children and families experience. The Child & Family Inequities Score is a summary measure derived from five indicators which describe inequities experienced by the child and family population in each of Toronto's 140 neighbourhoods. The Inequities Score is a tool to help explain the variation in socio-economic barriers across the City of Toronto neighbourhoods. Neighbourhoods with scores in the top 25% are considered to have a 'Very High' level of inequities and are

displayed in the map as grey. The indicators and weights included in the Child & Family Inequities Score are displayed in table 2.

Table 1: Indicators and Weights included in the Child & Family Inequities Score

40%	Low Income Measure	Percent of families with an after-tax income that falls below the Low Income Measure
15%	Parental Unemployment	Percent of families with at least one unemployed parent/caregiver
15%	Low Parental Education	Percent of families with at least one parent/caregiver that does not have a high school diploma
15%	No Knowledge of Official Language	Percent of families with no parents who have knowledge of either official language (English or French)
15%	Core Housing Need	Percent of families in core housing need according to the Statistics Canada definition

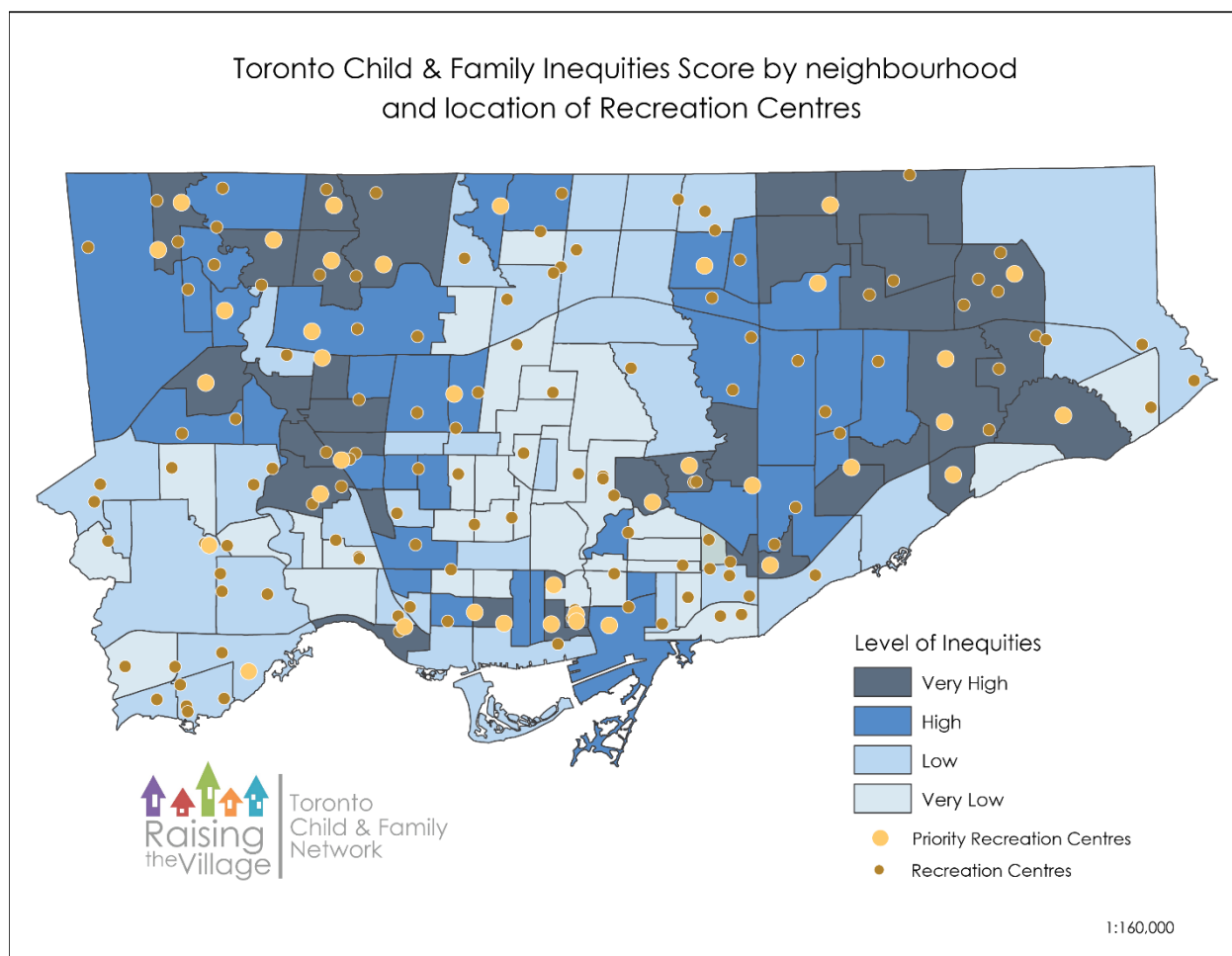


Table 2: Free Centres and Neighbourhood Characteristics

Recreation Centre Name	Participation in arts and sports	Level of Inequities	In area with very high inequities and low participation in arts/sports
Antibes Community Centre	Low	High	No
Cedarbrook Community Centre	Very Low	Very High	Yes
Centennial Recreation Centre-Scarborough	Very Low	Very High	Yes
Chalkfarm Community Centre	Very Low	High	No
Dennis R.Timbrell Resource Centre	Very Low	Very High	Yes
Don Montgomery Community Centre	Very Low	Very High	Yes
Driftwood Community Centre	Very Low	Very High	Yes
Elmbank Community Centre	Very Low	Very High	Yes
Emery Collegiate Institute	Very Low	Very high	Yes
Falstaff Community Centre	Very Low	Very High	Yes
Grandravine Community Recreation Centre	Very Low	Very High	Yes
Harrison Pool	Low	Very High	No
Heron Park Community Centre	Very Low	Very High	Yes
Islington CS	Low	Low	No
Jenner Jean-Marie Community Centre	Very Low	Very High	Yes
Jimmie Simpson Recreation Centre	High	High	No
John English CS	Low	Low	No
John Innes Community Recreation Centre	High	Very High	No
Kingsview Village CS	Very Low	Very High	Yes
L'Amoreaux Community Recreation Centre	Low	Very High	No
Lawrence Heights Community Centre	Low	High	No
Malvern Recreation Centre	Very Low	Very High	Yes
Masaryk- Cowan Community Centre	Low	Very High	No
North Kipling Community Centre	Very Low	Very High	Yes
Oakdale Community Centre	Very Low	Very High	Yes
Oakridge Community Recreation Centre	Very Low	Very High	Yes
O'Connor Community Centre	Low	Very High	No

Oriole Community Centre	High	High	No
Regent Park Aquatic Centre	Very Low	Very High	Yes
Regent Park Community Centre	Very Low	Very High	Yes
Rockcliffe Middle School	Very Low	Very High	Yes
Scadding Court Community Centre	Low	Very High	No
Scarborough Village Recreation Centre	Very Low	Very High	Yes
Stephen Leacock Community Recreation Centre	Low	High	No
The Elms Community School	Very Low	High	No
Wellesley Community Centre	Low	Very High	No
York Recreation Centre	Very Low	High	No