

DI17.2

RAMSDEN PARK REVITALIZATION HILLSBORO RAMP AND STAIRS

Presented to: Toronto Accessibility Advisory Committee

Date: October 25, 2017

Presenters:

Dave Nosella, Project Manager Capital Construction, Parks, Forestry and Recreation

Dan Connolly, Senior Project Coordinator, Parks, Forestry and Recreation

SITE OVERVIEW



- Ramsden Park is a 5.6 hectare park (13.7 acre) located in Ward 27.
- The Park is bordered by Yonge Street to the east, Pears Avenue to the south, Roxborough Street West to the north, and Avenue Road to the west.
- Park facilities include a playground, wading pool, artificial ice rink, tennis courts, ball diamond, dogs off leash area, washroom building and change room/ washroom building adjacent to the ice rink.

PRE-EXISTING CONDITIONS



Deteriorated
timber retaining walls



Deteriorated
wading pool

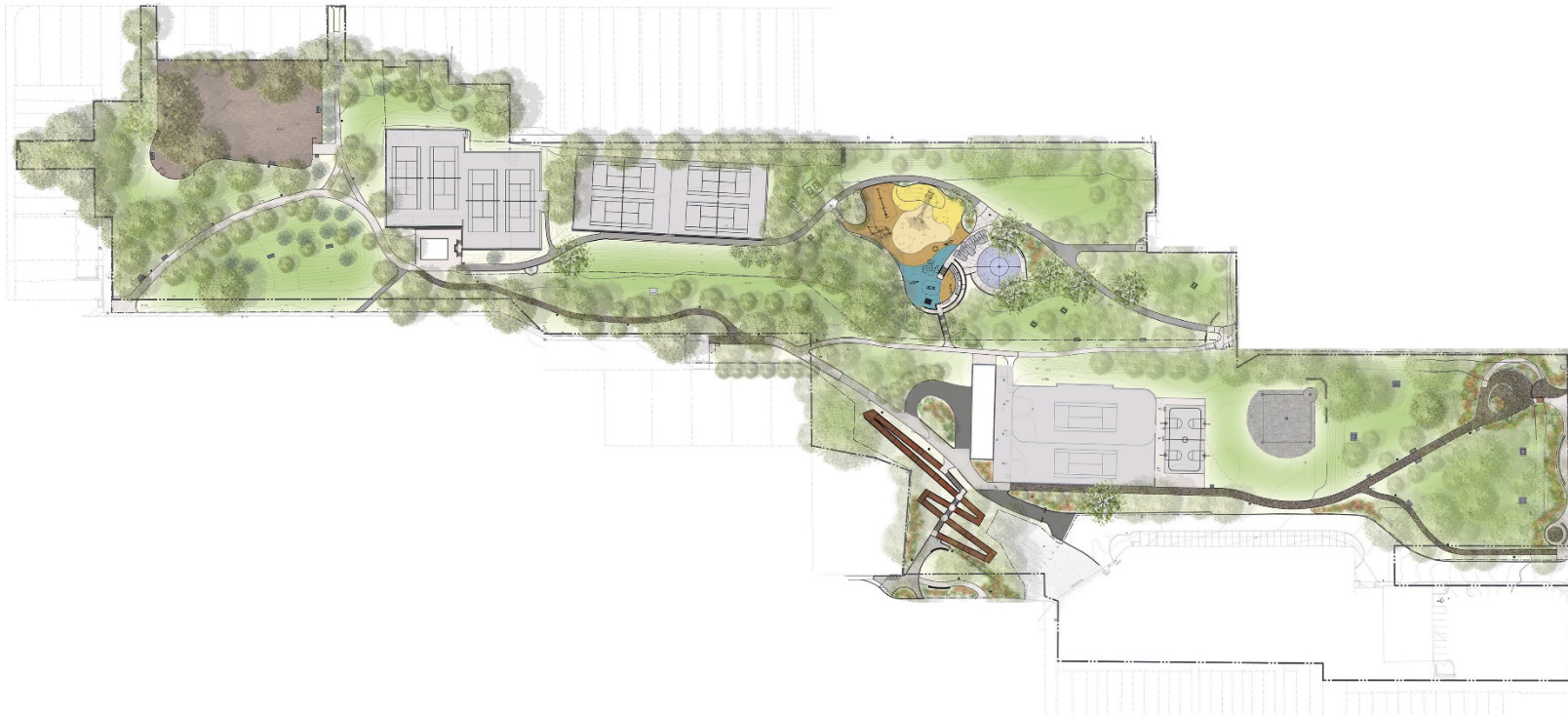


Deteriorated fencing



Deteriorated
tennis courts

CONCEPT PLAN ILLUSTRATING PARK IMPROVEMENTS



CONCEPT PLAN ILLUSTRATING EXISTING AND PROPOSED ACCESSIBLE ENTRANCES INTO RAMSDEN PARK



HILLSBORO ENTRANCE – LOWER RAMP



Image features lower half of ramp that is approximately a 12% slope or 1:8 slope ratio. The ramp intersects with the lower half of stairs

HILLSBORO ENTRANCE – UPPER RAMP



Image is an upward view of the upper portion of the ramp. The incline appears steeper. The surface is a deteriorated asphalt path with large cracks.

HILLSBORO ENTRANCE – STAIRS



Images illustrate deteriorated steps made of timber where materials between stair treads have sunken creating tripping hazards. The handrail is made of logs and is missing for the lower portion of the stairs.

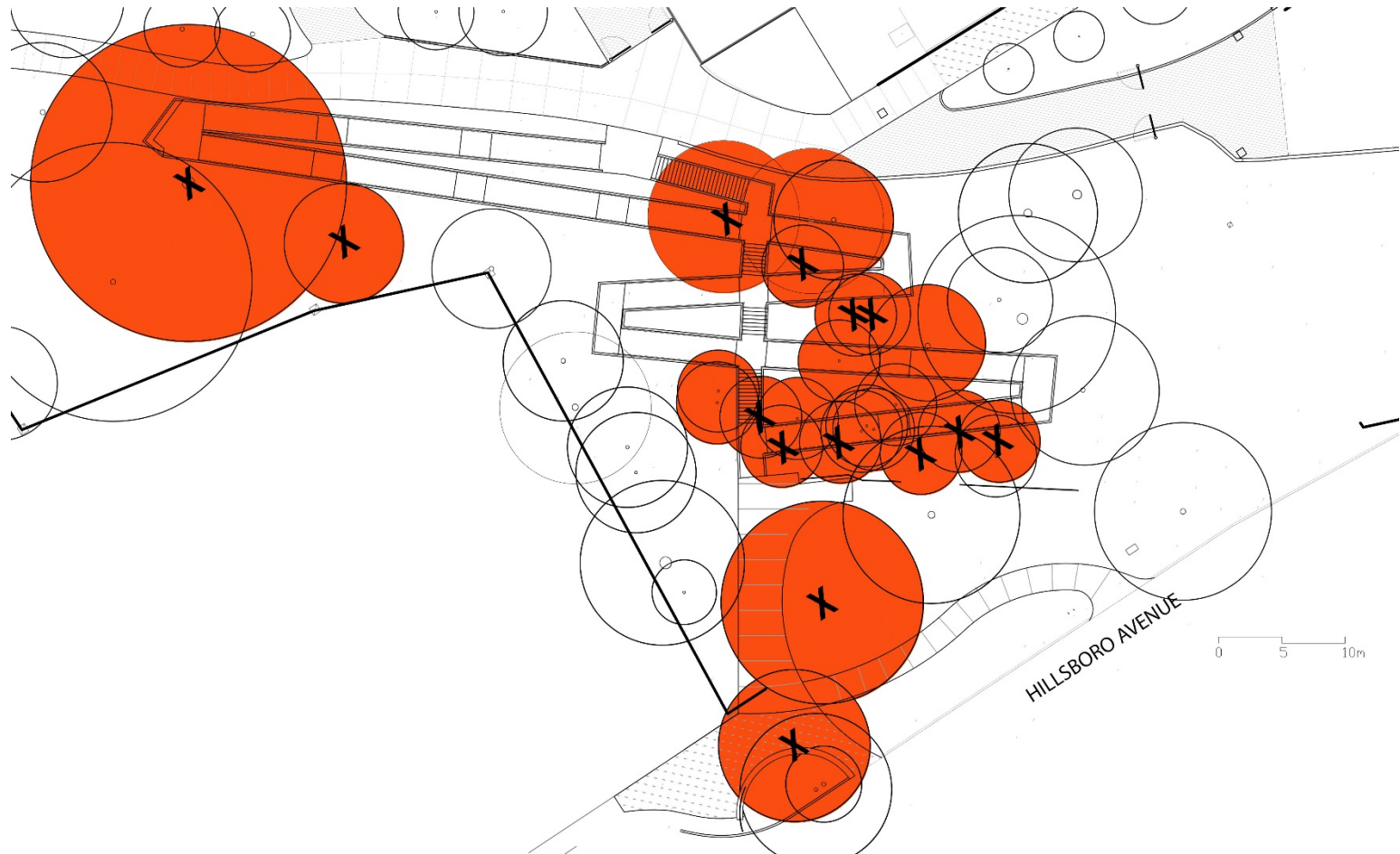
AODA ACCESSIBILITY REQUIREMENTS

- Accessibility for Ontarians with Disabilities Act (AODA) requires the City to identify, prevent, and remove accessibility barriers.
- AODA requires the City to incorporate accessibility design, criteria and features in all procurement.
- AODA requires accessibility consultation on new and redeveloped recreation trails.

PROPOSED DESIGN OF HILLSBORO RAMP AND STAIRS



TREES TO BE REMOVED IN ORDER TO FACILITATE CONSTRUCTION OF HILLSBORO RAMP AND STAIRS



CONCEPTUAL PLAN ILLUSTRATING POTENTIAL REFORESTATION FOLLOWING CONSTRUCTION OF HILLSBORO RAMP AND STAIRS





THANK YOU.
ANY QUESTIONS?