

An aerial photograph of Toronto Pearson International Airport, showing the main terminal building, numerous aircraft parked at gates, and surrounding infrastructure like roads and parking lots. The image is used as a background for the presentation slide.

Toronto Pearson: Canada's Gateway

September 20, 2017
Greater Toronto Airports Authority



Toronto Pearson today

1,250
daily aircraft
movements

130,000
daily passengers

1,233
daily tonnes of
cargo

60
airlines

180
destinations

2nd
in North America in
terms of inbound
int'l traffic

Anticipated in 2017 - 48 Million Passengers

Toronto Pearson in your community

60,000
Jobs

\$380,000
in Community
investment

\$150M
Procurement from
Toronto businesses

20 local
events this
summer



Toronto Pearson is a crucial economic engine for the region & Canada

TODAY

67% of global economies

6.3% of Ontario's GDP
(\$42 B)

332,000 jobs



FUTURE

80%+ of global economies

8.5% of Ontario's GDP

700,000 Jobs
(approx.)

Toronto Pearson's connectivity breeds opportunities

What they want:

- ✓ Within 45 minutes of an international airport
- ✓ Daily, direct flights to Seattle, New York, San Francisco/Bay Area, and Washington, D.C.
- ✓ Access to mass transit

What we have:

- ✓ Daily, direct access to 67% of the world's economy
- ✓ 4th largest global entry point into the U.S.
- ✓ 253 daily U.S. bound flights serving 72 cities



Planning for the Future



Southern Ontario is a key economic region


Ontario accounts for 39.4% of the national economy



\$1.0 Trillion
Ontario GDP in 2043
(25.3% growth)



~15.5 Million
Population in 2043
(10.9% growth)



Aviation demand in the region is expected to double adding stress to existing infrastructure

Driving times to Toronto Pearson are expected to rise by an average of 30% in the next 20 years

49 million passengers
is the present regional demand

110 million
over the next 30 years

Planning for the Future: Master Plan 2017



Growth Forecasts

2016

44.3 million

passengers at Toronto Pearson

456,000

total aircraft
movements

106

passengers/
passenger movement

450,000

tonnes of cargo

2037

85 million

passengers at Toronto Pearson

632,000

total aircraft
movements

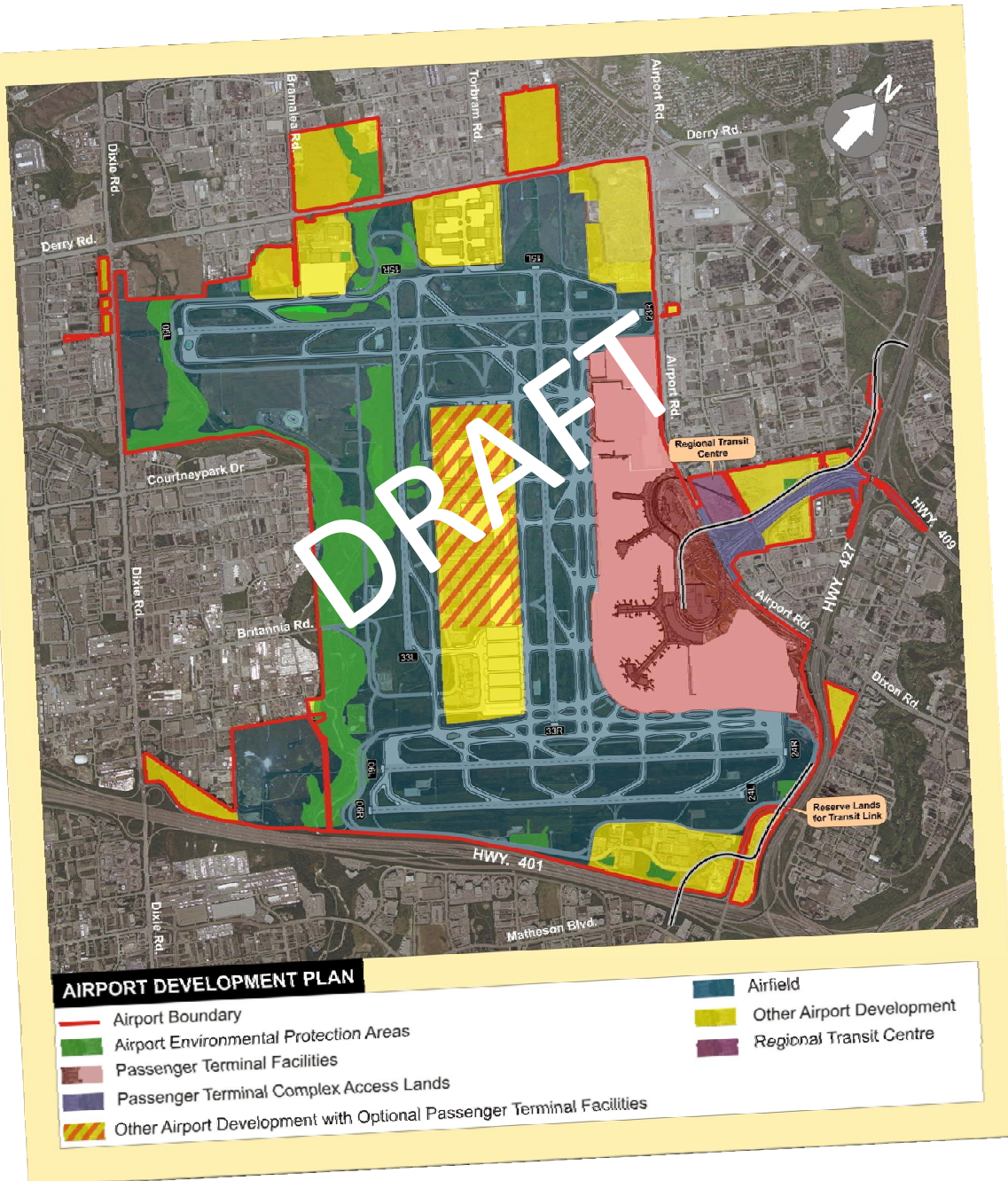
140

passengers/
passenger movement

950,000

tonnes of cargo

Airport Land Use Plan

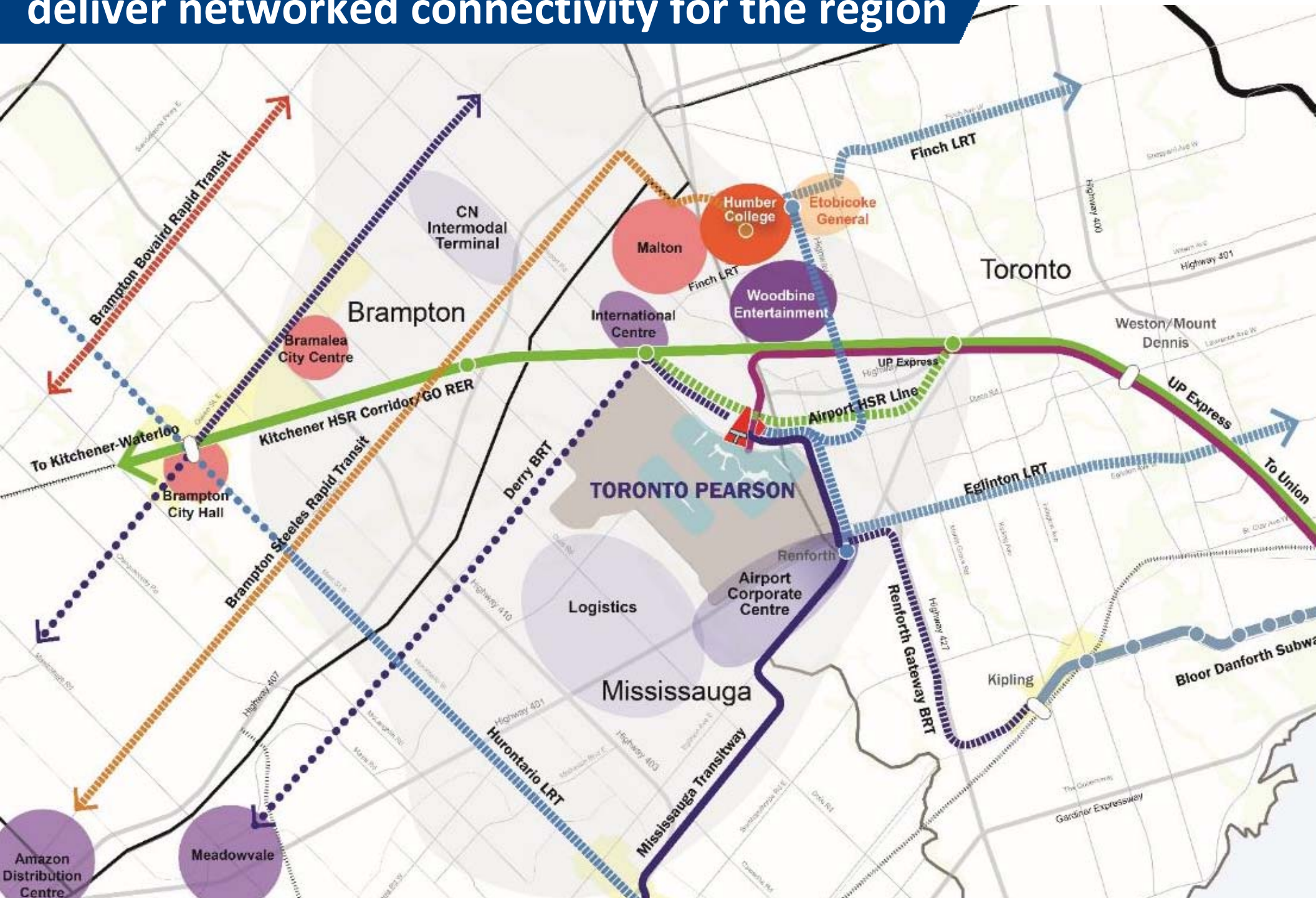


To accommodate growth:

- Phased terminal expansion including additional gates, more baggage capacity
- Eventual single contiguous terminal
 - Addition of passenger processing centre, linked to terminal buildings

Current runways and airspace can safely accommodate expected growth in aircraft movements

A Toronto Pearson Regional Transit Centre can deliver networked connectivity for the region





Toronto Pearson is committed to building a Regional Transit Centre that could serve as the GTHA's second mobility hub and transform the region

Better use of aviation resources to support aviation demand

Airports will have an increasingly important role to play as the demand for air services grows



Better transit connectivity between airports will reduce road congestion and support goods movement

Environmental responsibility

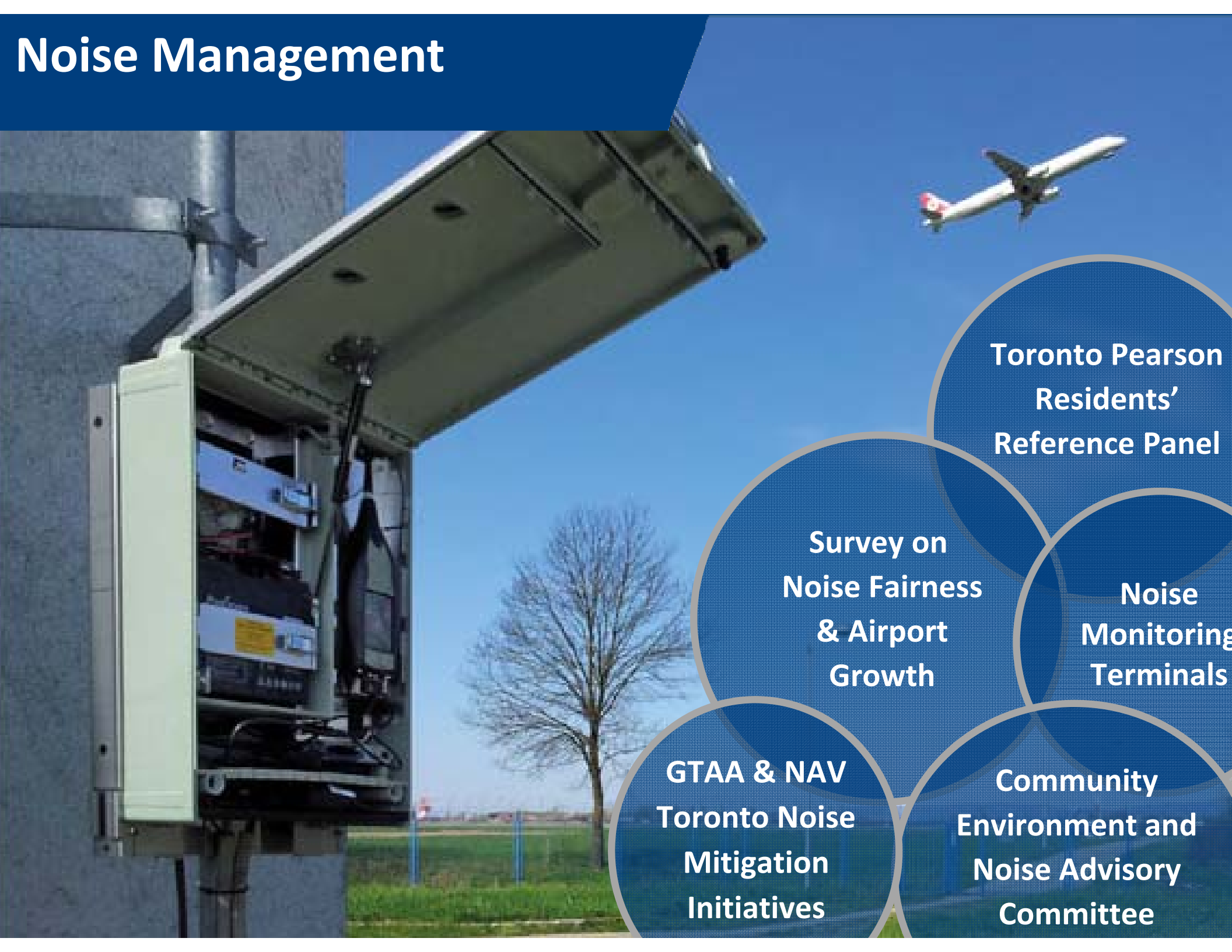


**34% reduction in
GHG
emissions since
2006**

**74% waste
diversion**

**Stormwater
Waste management
Energy conservation**





Noise Management

**Toronto Pearson
Residents'
Reference Panel**

**Survey on
Noise Fairness
& Airport
Growth**

**Noise
Monitoring
Terminals**

**GTAA & NAV
Toronto Noise
Mitigation
Initiatives**

**Community
Environment and
Noise Advisory
Committee**

Investing in communities



**1% of net
revenues**

to help people enhance skills
and find jobs

Keys to achieving full economic benefit of growth



An aerial photograph of Toronto Pearson International Airport, showing the terminal, runways, taxiways, and numerous aircraft parked at gates. The image is overlaid with a semi-transparent white trapezoidal shape containing the text "Thank You".

Thank You

Greater Toronto Airports Authority



Toronto Pearson