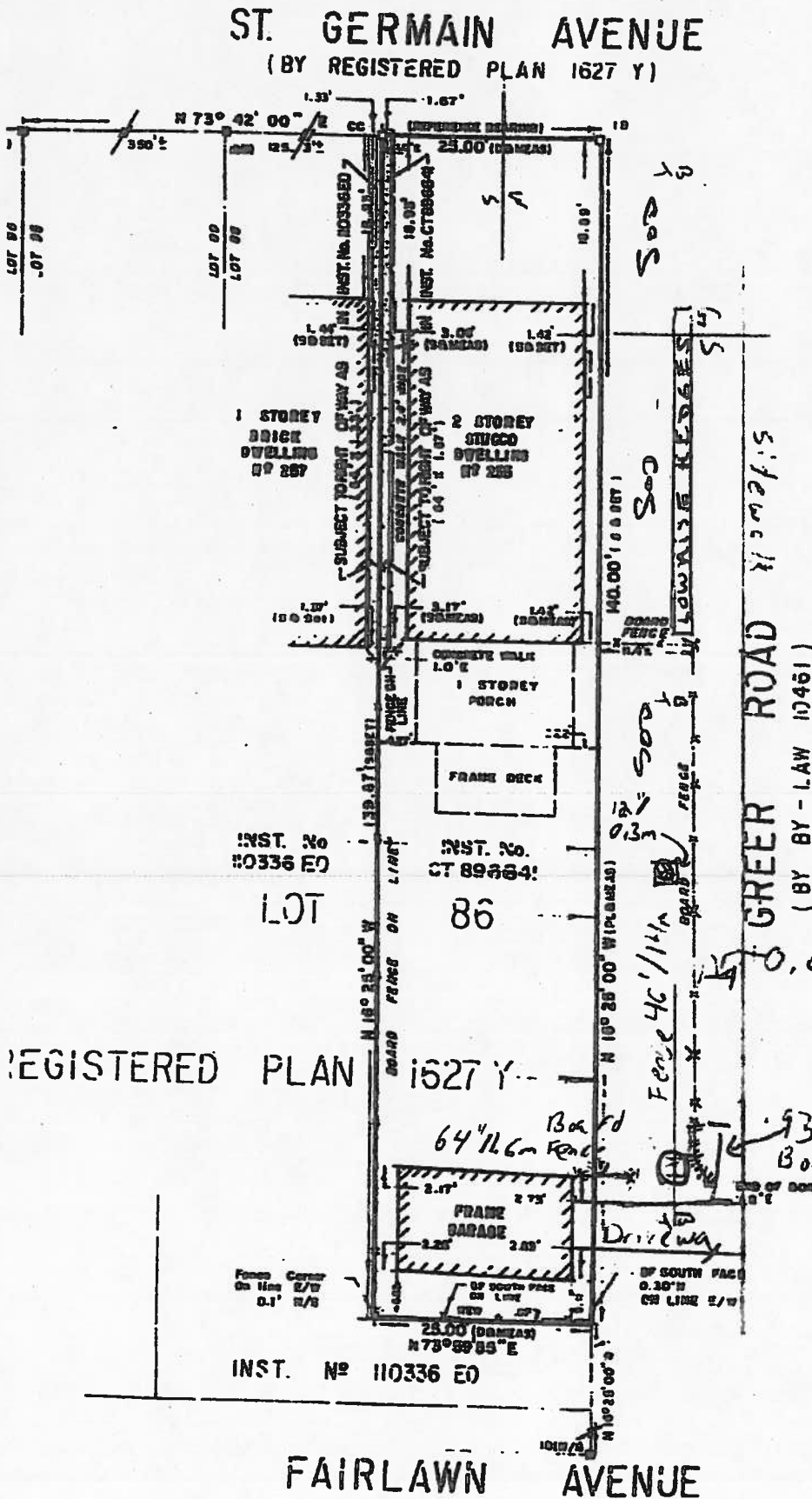


W = Water  
 W/S = Water Sewer  
 BT = Bell Telephone  
 G/S = Gas  
 X = Fence Post

Fence Post 4' / 1.2m depth



0.6m / 24"

93' / 28.36m Driveway to Fence  
Board Fence 6' / 1.83m high

Distance To South Tree  
55' / 1.4m To South face  
32' / 0.8m To East Fence