

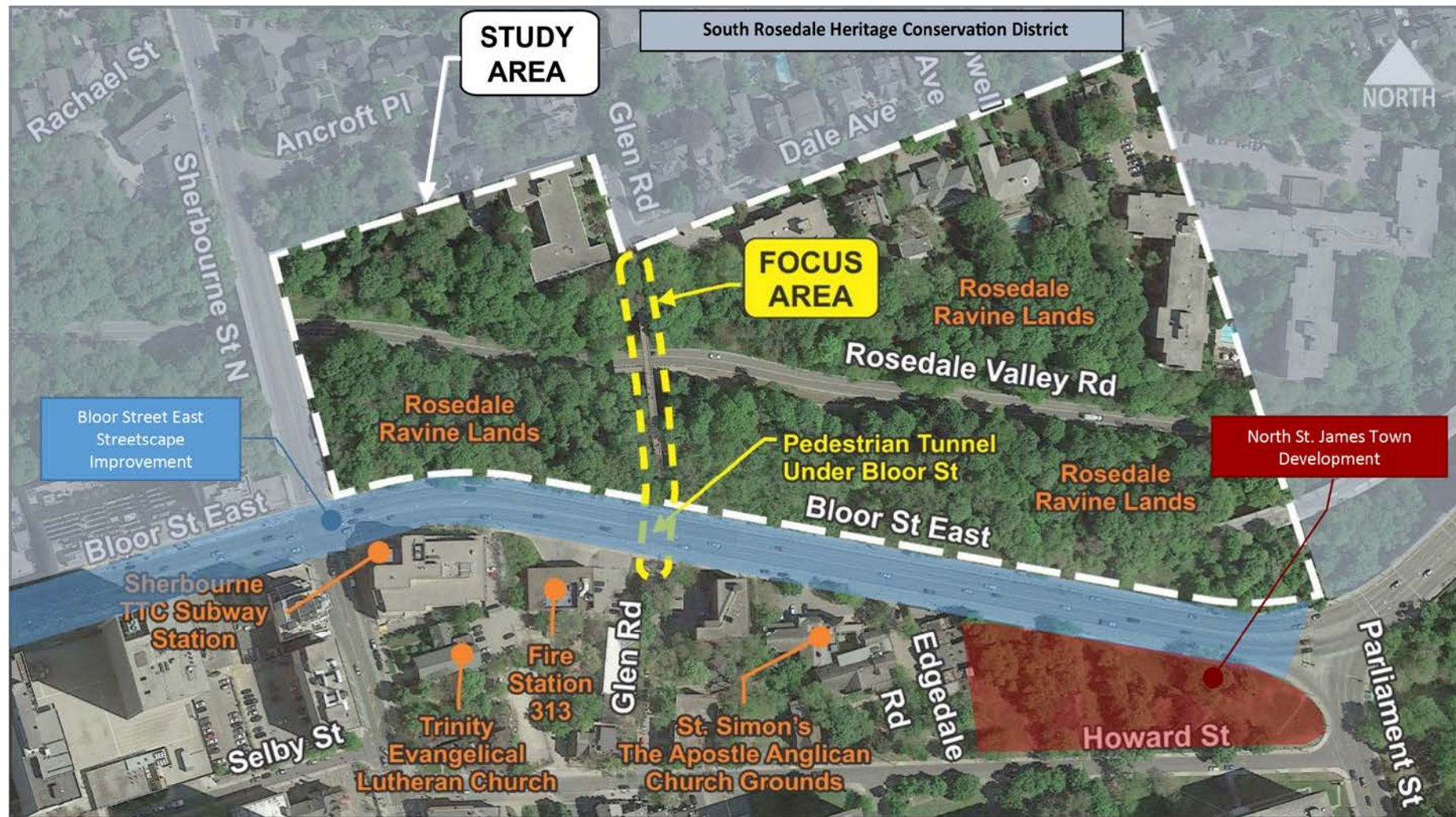


Glen Road Pedestrian Bridge Environmental Assessment

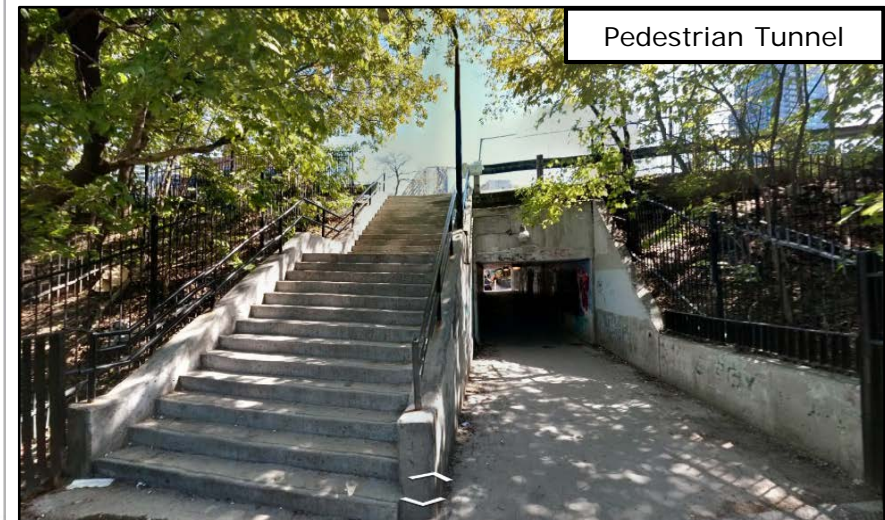
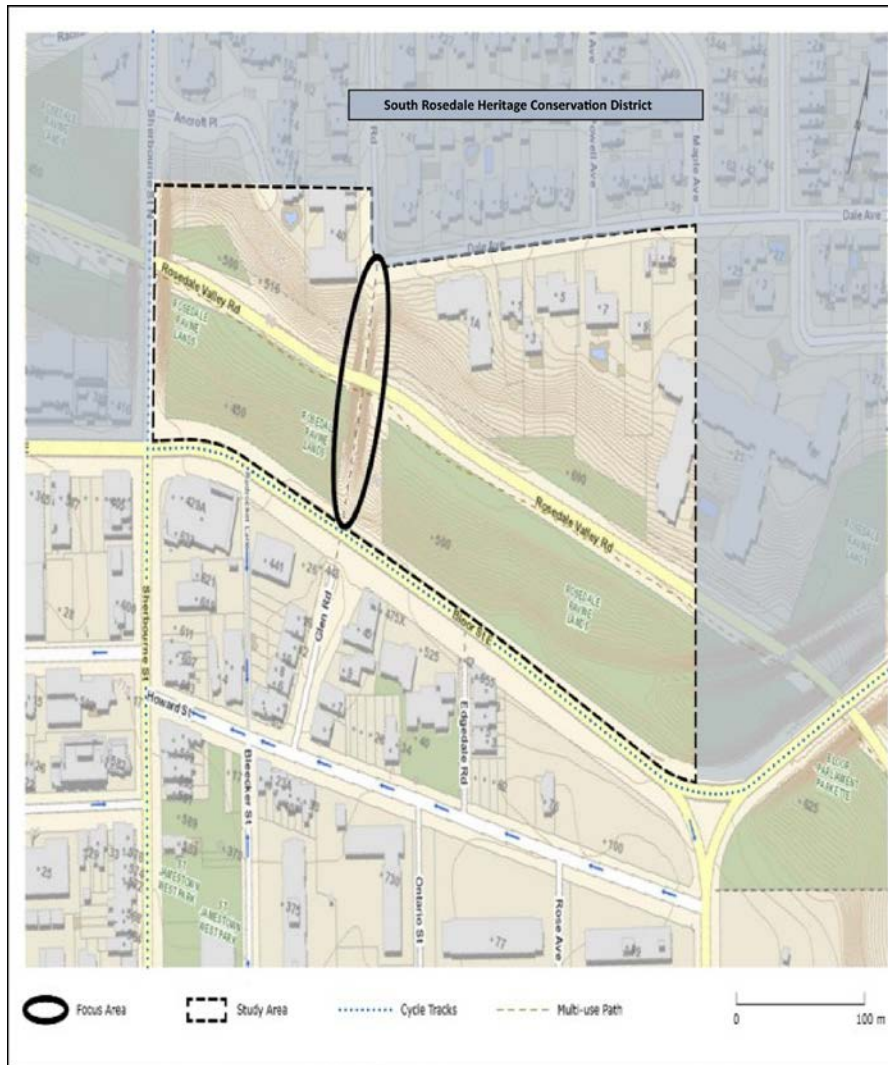
Presentation to Toronto Preservation Board

November 30, 2017

STUDY AREA



STUDY AREA



EXISTING BRIDGE



View from mid-bridge looking south



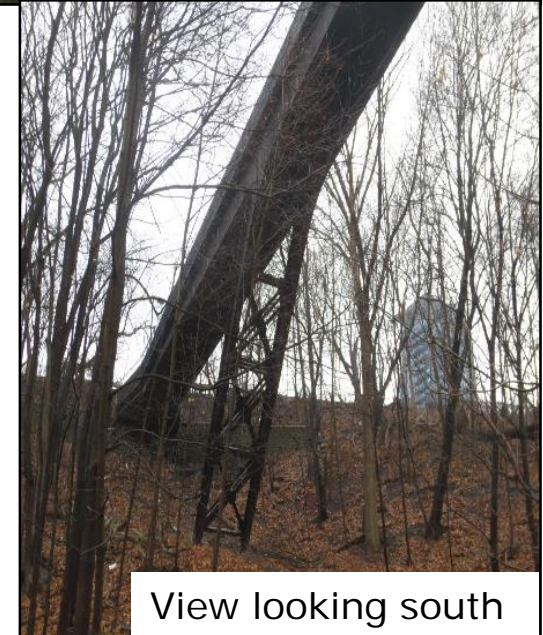
View from north abutment looking south

EXISTING BRIDGE



View looking east from Rosedale Valley Road

- Existing structure built in 1973; steel inclined leg rigid frame bridge with a timber deck
- Three (3) spans structure; totaling 107 m
- Deck width ~ 3.7 m; Height ~ 20 m
- Routine inspection in 2014 revealed substantial deterioration, at a greater rate than expected
- Emergency repairs completed in 2015 – not intended as a long term solution; corrosion will continue



View looking south

EA SCHEDULE AND PROCESS

Municipal Class Environmental Assessment: Schedule C project given cultural heritage value potential (age of structure = 40+ years)



Extensive consultation with Councillors; community stakeholders

- Community Walk-shop (June 2016)
- Bridge User Survey (July – August 2016)
- Study expanded to include pedestrian tunnel (Fall 2016)
- Public Information Centre (September 2016 & October 2017)
- Design Review Panel (First Review – July 2017)

CULTURAL HERITAGE



View south from the Glen Road Bridge towards Howard Street [City of Toronto Archives, Fonds 200, Series 372, Subseries 10, Item 78, March 14, 1913].



Glen Road Bridge between Howard Street and Dale Avenue, looking south from Dale Avenue [Toronto Reference Library, Baldwin S 1-901A, J.V. Salmon, 1951]

- 1884 – First record of bridge over Rosedale Valley
- 1951 – Bridge closed to vehicular traffic; pedestrian use only
- 1973 – Construction of the current pedestrian bridge
- 1992 – Officially renamed as the Morley Callaghan Footbridge
- 2001 – Rehabilitation
- 2003 – Bridge designated under Part V of the Ontario Heritage Act within the South Rosedale Heritage Conservation District; added to City's heritage register

Glen Road bridge over Rosedale Valley, in Goad's Atlas Map of Toronto (1884)



BACKGROUND

View from the south end of bridge, looking north to Glen Rd / Dale Ave (c.1895)



HERITAGE PLAQUE



View from Glen Road and Dale Avenue, looking south to bridge approach

ROSEDALE RAVINE

View from Rosedale Valley Road looking east



CULTURAL HERITAGE EVALUATION REPORT

Glen Road Pedestrian Bridge has been identified as having cultural heritage value for design/physical, historical/associative and contextual reasons:

- Rare example of steel rigid frame bridge with inclined legs within the City of Toronto
- Continued use of the bridge crossing attests to importance of connection across the Rosedale Ravine, at Glen Road
- Physical and symbolic landmark within the community
- Gateway to South Rosedale Heritage Conservation District

Principal heritage philosophy for the protection of cultural heritage resources is retention in situ

RECOMMENDATIONS

Cultural Heritage:

- Any new structure should explore design options that retain the design attributes of the existing bridge, at the same location, and the view from Rosedale Valley Road

EA Study:

- Replace the Bridge in same location; and
- Replace and Reconstruct a Wider Tunnel to the west

RECOMMENDATIONS

These recommendations:

- Address the deteriorating condition of the bridge; concerns about security
- Maintain cultural heritage value of the unique bridge design, crossing and view from Rosedale Valley Road
- Maintain/improve connections to active transportation and transit facilities
- Provide opportunities for urban design improvements
- Add capacity for growth in pedestrian and cyclist traffic

PROPOSED CONCEPTS

BRIDGE AND TUNNEL (AERIAL)

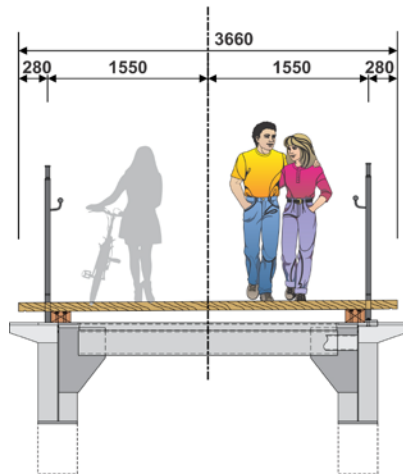
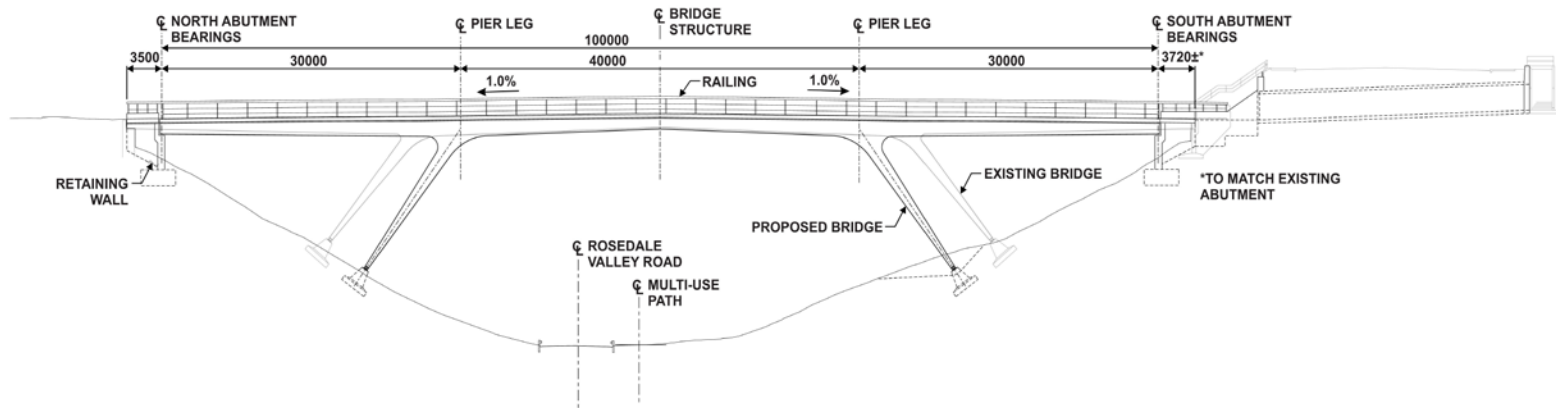


NORTH APPROACH

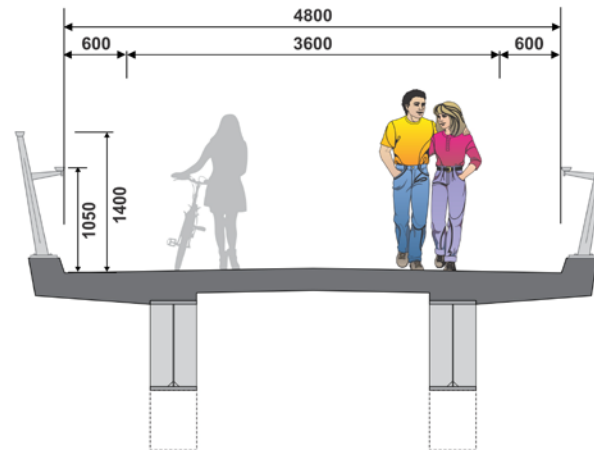


Planter and plaque location to be determined

BRIDGE ELEVATION AND CROSS-SECTIONS



Existing Cross-section



Proposed Cross-section

BRIDGE TYPE DESIGN ALTERNATIVE #1

Steel Girder with Inclined Steel Legs



BRIDGE TYPE DESIGN ALTERNATIVE #2

Steel Girder with Concrete Piers



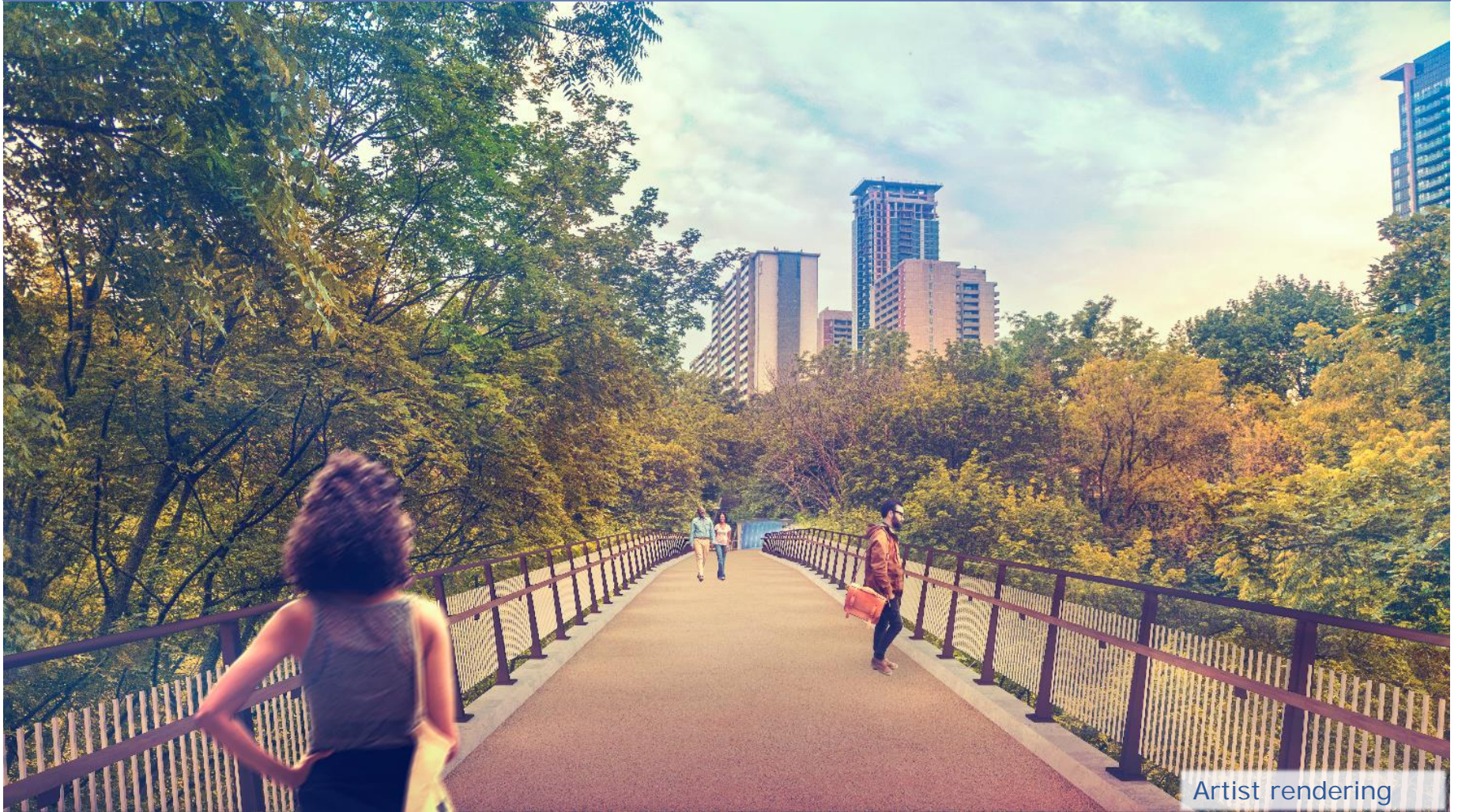
BRIDGE TYPE DESIGN ALTERNATIVE #3

Concrete Box with Concrete Piers



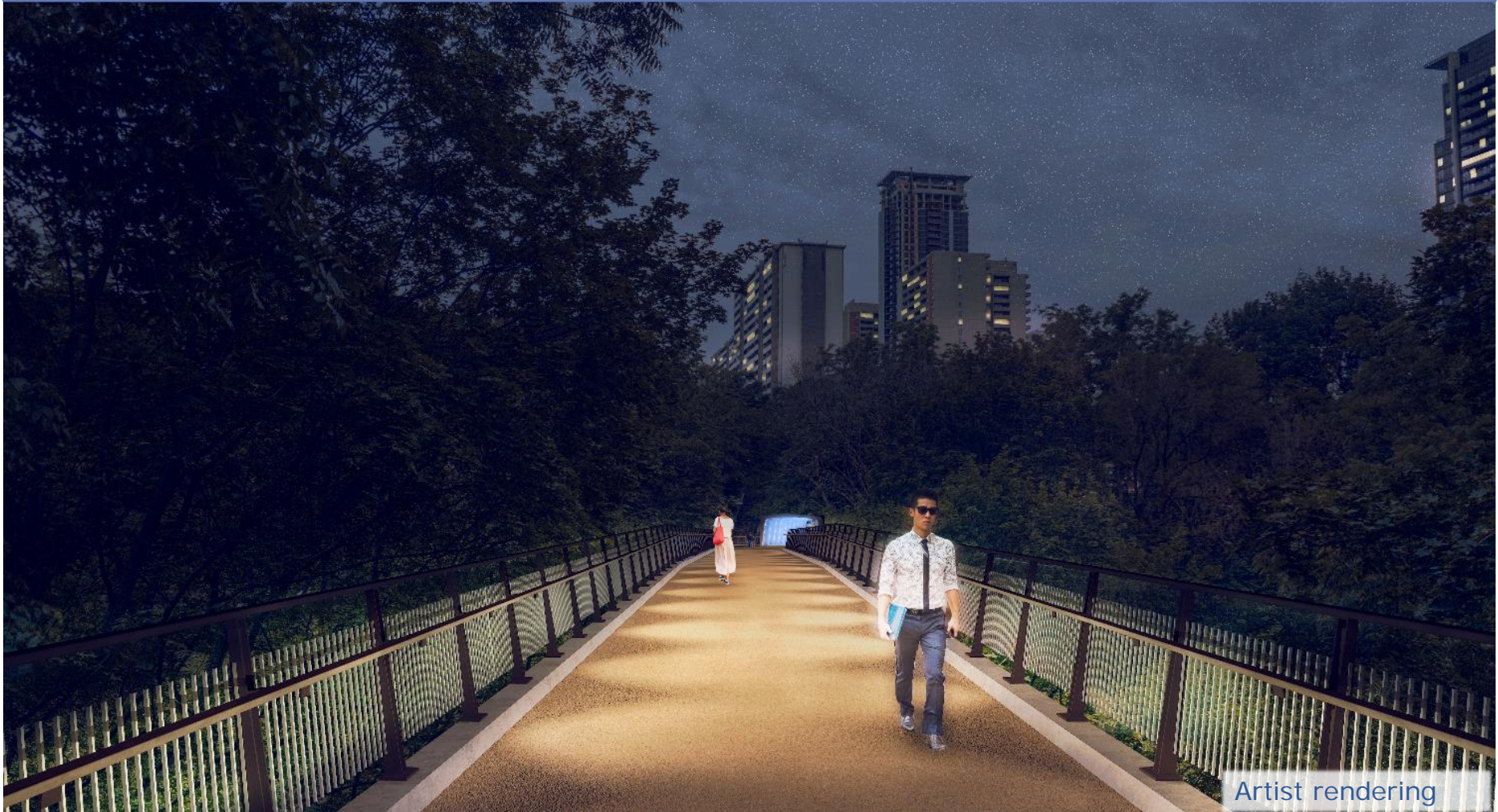
BRIDGE DECK

View from north side of bridge looking south



BRIDGE DECK AT NIGHT

View from north side of bridge looking south at night



Artist rendering

TUNNEL AND BRIDGE (SOUTH END)

View from tunnel looking north to bridge



Artist rendering

DESIGN ELEMENTS

PROPOSED BRIDGE CONCEPT

Overall view from Rosedale Valley Road looking west



Artist rendering

PROPOSED TUNNEL CONCEPT



Artist rendering.
View from Glen Road looking north to tunnel

DESIGN ELEMENTS (POST EA APPROVAL)



Design elements to be considered:

- Bridge materials including deck, railing, illumination poles
- Public art

Additional consultation will be undertaken during Detail Design



CONSULTATION / NEXT STEPS

- Toronto Preservation Board – Fall 2017
- Finalize Environmental Study Report;
 - 45-day Public Review Period (Winter 2017)
- Detailed Design – 2018 / 2019
 - Complete photographic and historical record of existing bridge
 - Provide to City of Toronto Archives, Reference Library, and other heritage associations, as appropriate
- Design Review Panel (Second Review – Summer 2018)
- Construction – 2019 / 2020