

RE:TA15.4



TransformTO

Climate Action for a Healthy,
Equitable, Prosperous Toronto

April 21, 2017

Mary Pickering, The Atmospheric Fund

TRANSFORMTO UPDATE

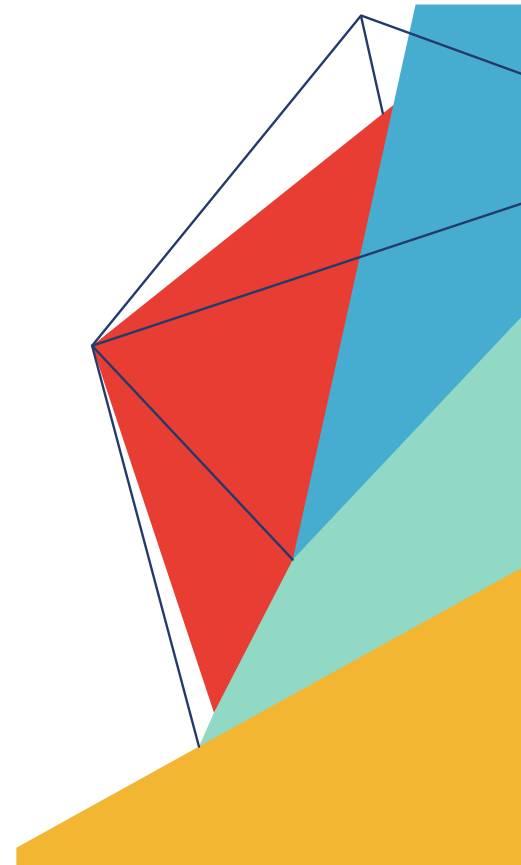
1. Context and TAF Alignment
2. Approach
3. Key Findings
4. Key Recommendations
5. Acceleration Campaigns
6. Summary and Next Steps



CONTEXT – PROJECT QUESTIONS

What combination of low-carbon actions will get Toronto to its 2050 climate target?

Which low-carbon actions have the most potential to drive community benefit and how can this be achieved?



Strategic Direction 2015-2020

#1 – Keep Eyes on the Horizon

“Demonstrate how successful achievement of the 2050 target will bring multiple benefits to the City of Toronto and its residents.”



CONTEXT – TAF INVOLVEMENT

- \$100K start-up grant
- New collaboration model with EED:
 - Co-design
 - Co-management
 - Co-development of Council recommendations
- Guidance for TAF programming



APPROACH

TRANSFORMTO CREATED

MAY 2015

Council endorses project between TAF & City of Toronto Environment & Energy Division

REPORTS TO CITY COUNCIL

DECEMBER 2016

Report #1: Short-Term Strategies and 2050 Pathway Building Blocks

RECOMMENDATIONS TO CITY COUNCIL

MAY 2017

Report #2: Long-Term 2050 Roadmap



5 KEY FINDINGS

GUIDING PRINCIPLE

“Cities that collaborate with other actors are able to deliver twice as many climate actions.”

- C40 Cities/ARUP



KEY FINDING #1 – We can't be successful without collaboration

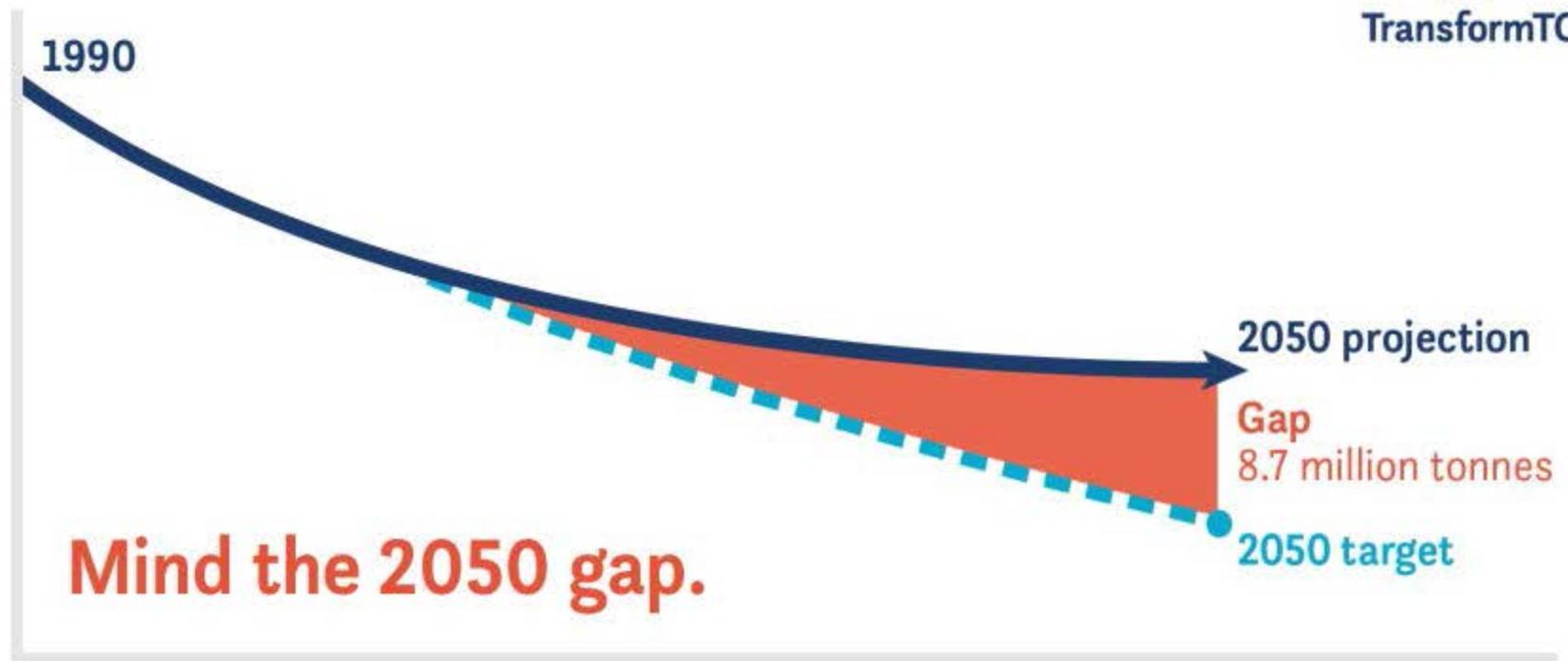
- 2,000 resident engaged
- 10 City divisions involved
- 35-member Advisory Group
- Consortia of over a dozen technical, facilitation, and modelling specialists
- Support from Fed. of Canadian Municipalities through \$175k grant

KEY FINDING #2 – Maintain current leadership and pick up the pace

Toronto's Business As Planned
GHG Emissions



TransformTO



KEY FINDING #3 – We can meet 80 x 50 with current technology

- Buildings approaching net-zero
- No more fossil fuels
- Short trips walked or cycled
- Waste virtually eliminated
- Diverse local energy
- Low-carbon district energy



KEY FINDING #4 – Valuable co-benefits

1. Increased public health and community resilience
2. Major energy cost savings
3. Higher productivity, innovation and competitiveness
4. New local jobs, investment opportunities
5. More accessible transportation



KEY FINDING #5 – It takes investment, but provides returns

- Two-thirds of modelled reductions will save money over their lifetime
- How? Through avoided capital and maintenance, energy cost savings, and cost of carbon
- Investments front-end loaded while returns are longer-term



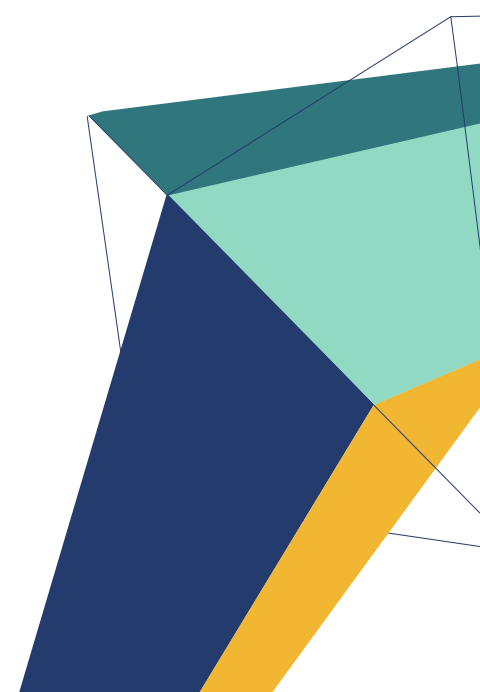
KEY FINDINGS

1. Collaboration is essential
2. We must pick up the pace
3. We can do it with current technology
4. There are valuable co-benefits
5. Investment brings returns over time

3 KEY RECOMMENDATIONS

RECOMMENDATIONS

1. Set long-term goals that support the necessary pace and scale
2. Lead by example
3. Make the shift to a multi-benefits approach

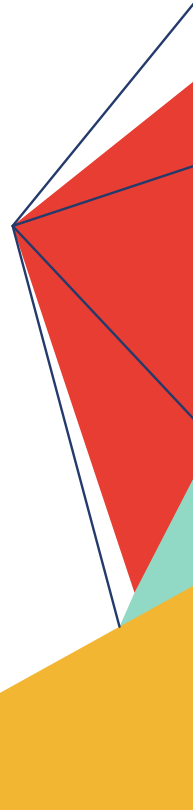


KEY RECOMMENDATIONS

1. Ensure approved directions are honored
2. Pick up the pace by funding short-term actions approved in 2016
3. Start three acceleration campaigns:
 - Low-carbon neighbourhoods
 - Electric mobility
 - Workforce development

CAMPAIGN #1 – Mobilize Low-Carbon Neighbourhoods

- Actions like district energy, transit building, and waste diversion won't be successful without local input and support
- People want to participate at the neighbourhood level and we must into local resources and creativity to achieve our goals
- Approach supports the Toronto Strong Neighbourhoods Strategy and the Resilience Strategy



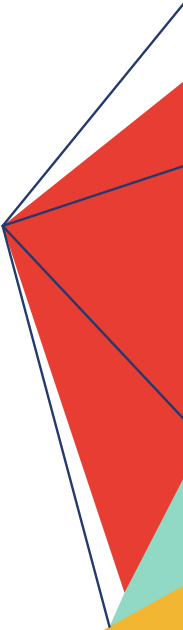
CAMPAIGN #2 – Prepare for Electric Mobility

- Converting passenger, freight and transit vehicles to electric key to 2050 goal
- Electrification will reduce local air pollution, improve public health
- Conversion represents major challenges to electricity grid management – and opportunities
- We need to proactively plan in order to ensure maximum community benefits



CAMPAIGN #3 – Develop the Workforce for High-Performance Buildings

- Buildings emit over half of Toronto's GHGs
- Higher standards for new buildings, and major retrofits of existing ones
- Broad-scale retrofits will require workforce mobilization and training
- 80,000 person years of local employment estimated between now and 2050
- Retrofits support social housing renewal, indoor health, job creation, and the local economy



Can we achieve Toronto's 80 X 50 target while improving public health, local economy, and social equity.

YES. But we need to act right away, and we must be bold



NEXT STEPS

- Share your views today
- We need your support
- Parks and Environment Committee: May 4
- City Council meeting: May 24-25
- QUESTIONS?

FIND OUT MORE:

toronto.ca/TransformTO
#transformTO

Mary Pickering,
VP Programs and Partnerships
The Atmospheric Fund
mpickering@taf.ca



TransformTO