

Rail Deck Park City-initiated Official Plan Amendment

Spadina Avenue

Bathurst Street

Photo courtesy of Public Work

**Toronto & East York Community Council
Meeting - Nov 14, 2017**



Bloor Viaduct -1918



Project Timeline

Spring 2014

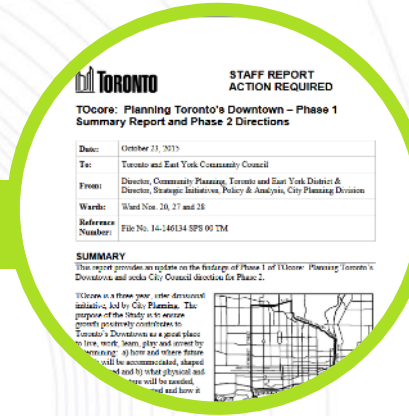
Fall 2015

Spring 2016

Summer 2016



The Downtown Toronto Trends, Issues, and Intensification Report identifies parkland acquisition as a key priority in order to protect quality of life Downtown.



The TOcore Phase 1 Summary Report identifies 4 “Big Moves” including delivering parkland in unconventional spaces such as the rail corridor and the Gardiner Expressway.



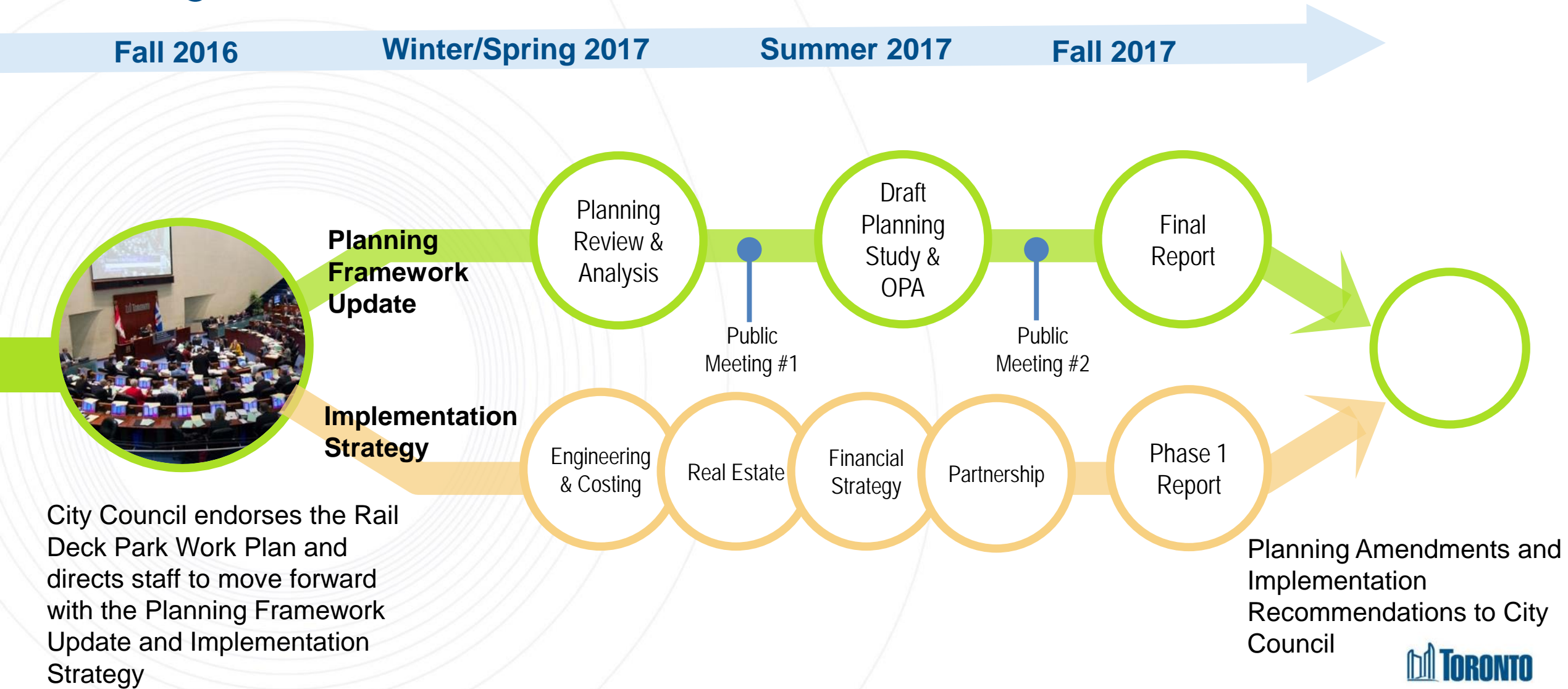
Emerging priorities in the TOcore Background Report include creative city-building ideas for establishing new parks and open spaces in the Downtown.



Mayor Tory announces a vision for an iconic new park in the Downtown – Rail Deck Park.



Project Timeline





ULI & City of Toronto Symposium



Public
Meetings



Youth
Engagement

Community
Engagement



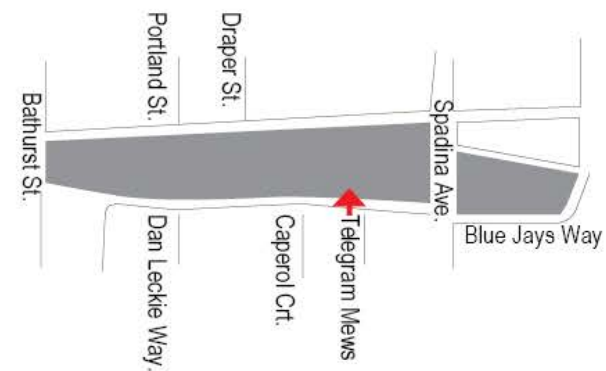
Pop-up
Workshops



Park
Walks



Telegram Mews - Looking North



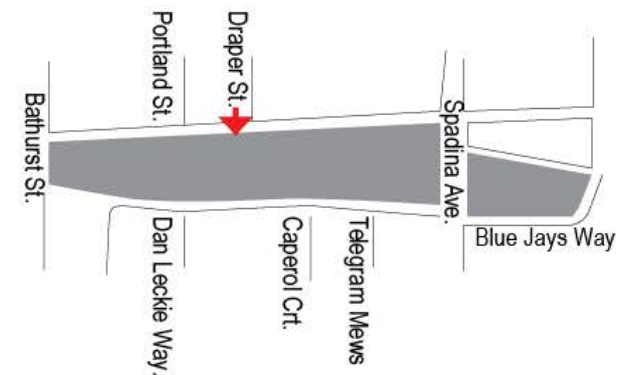
Source: Massing 3D Model, prepared by WSP MAA team for Rail Deck Park Engineering Report Study, dated September, 2017. (using 24mm lens)



Source: Massing 3D Model, submitted for 433 Front Street West, Toronto, ON (ORCA Project), by P.I.T.S. Developments Inc., on May 23, 2017 (using 24mm lens)



Draper Street - Looking South



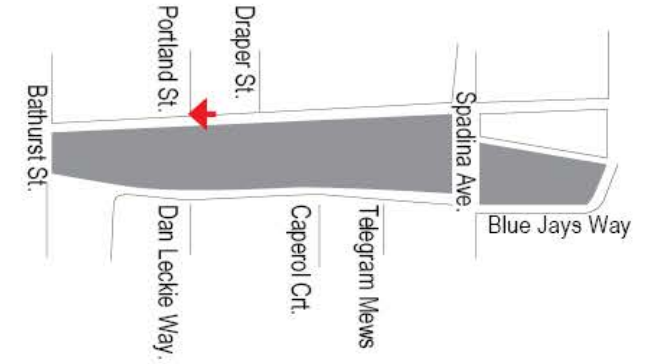
Source: Massing 3D Model, prepared by WSP MAA team for Rail Deck Park Engineering Report Study, dated September, 2017. (using 24mm lens)



Source: Massing 3D Model, submitted for 433 Front Street West, Toronto, ON (ORCA Project), by P.I.T.S. Developments Inc., on May 23, 2017 (using 24mm lens)



Front Street - Looking West



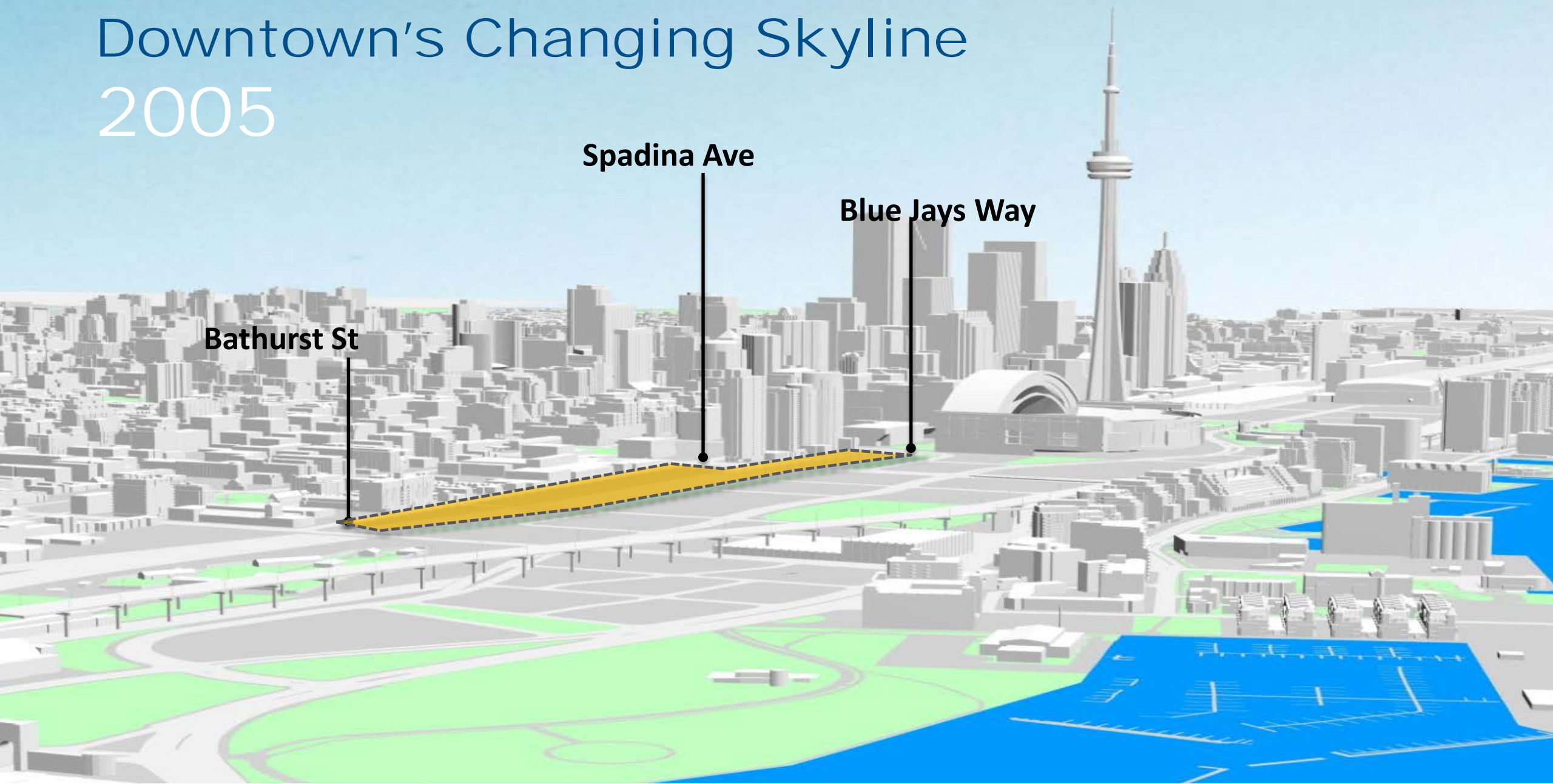
Source: Massing 3D Model, prepared by WSP MAA team for Rail Deck Park Engineering Report Study, dated September, 2017. (using 24mm lens)



Source: Massing 3D Model, submitted for 433 Front Street West, Toronto, ON (ORCA Project), by P.I.T.S. Developments Inc., on May 23, 2017 (using 24mm lens)

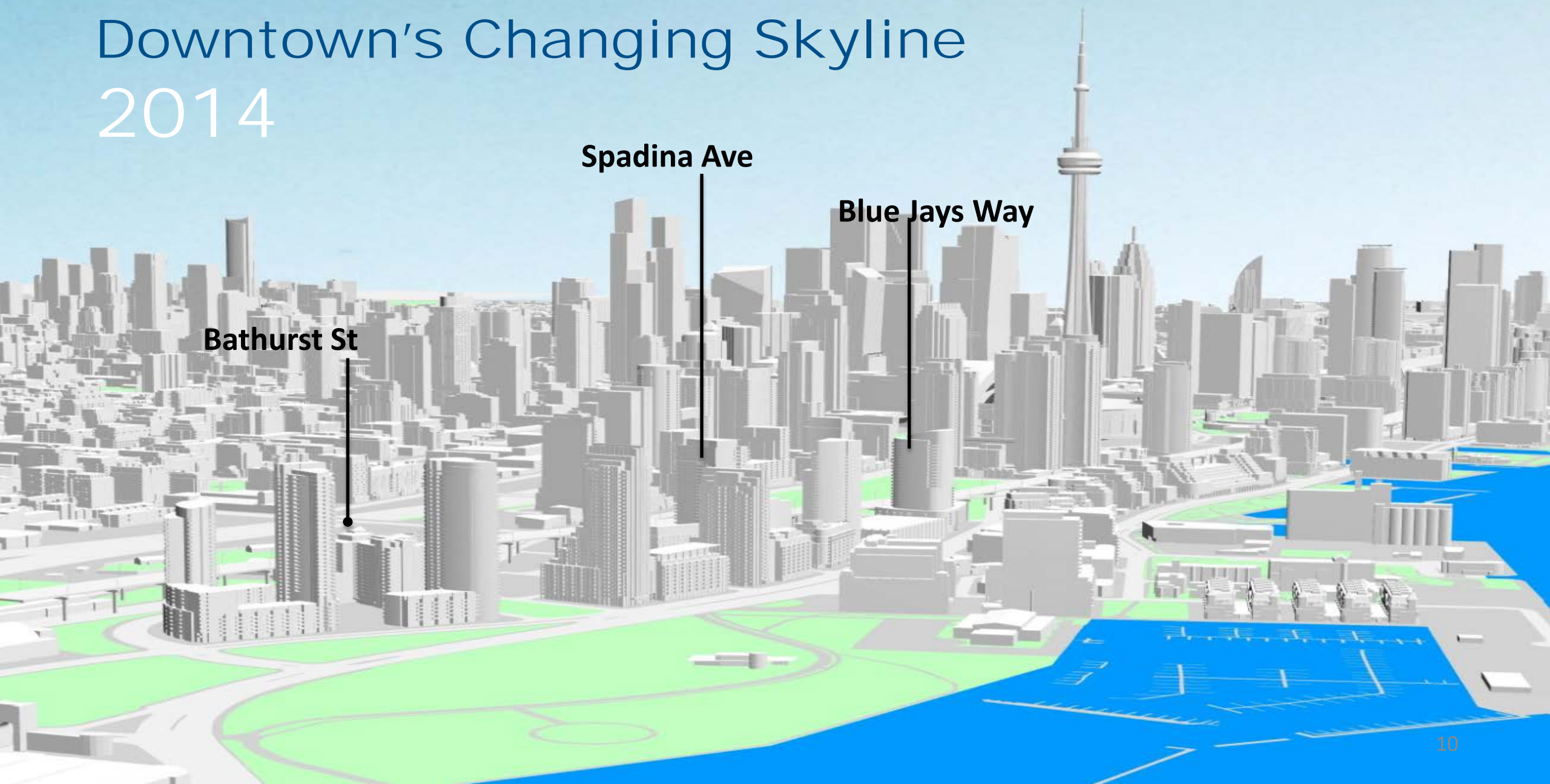


Downtown's Changing Skyline 2005

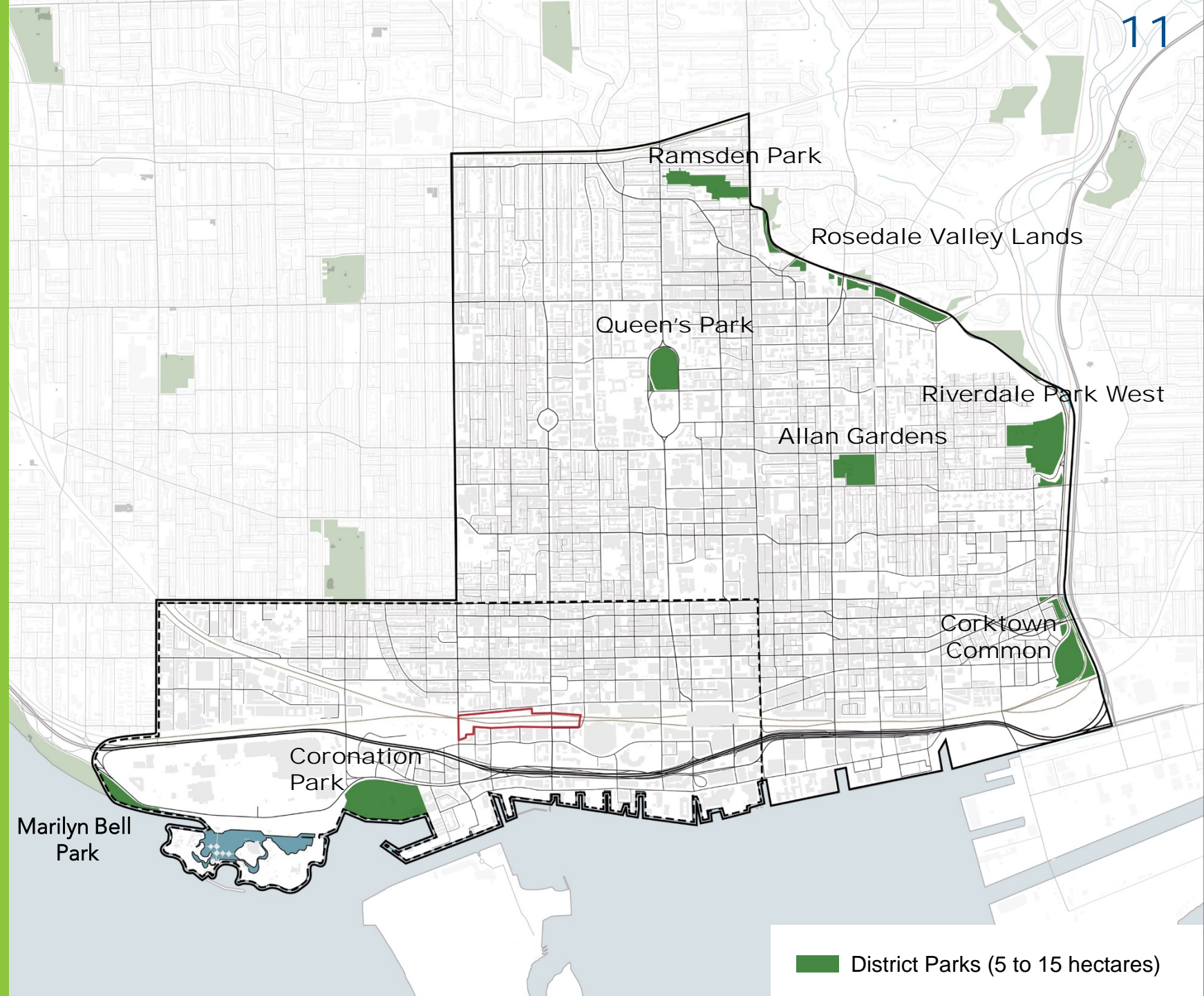




Downtown's Changing Skyline 2014



Limited large parks with City-wide functions





Downtown vs. City-wide park provision



Downtown



City-wide



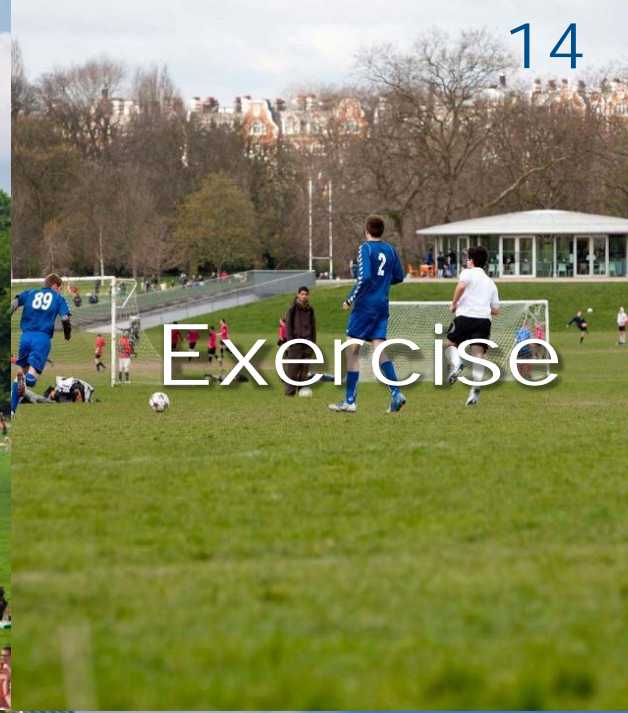
The last opportunity for a large park in Downtown



Watch



Gather



Exercise

A large place
to do many things



Relax



Stroll



Play



Skate



Existing Park Comparisons



Grange Park
Toronto, ON



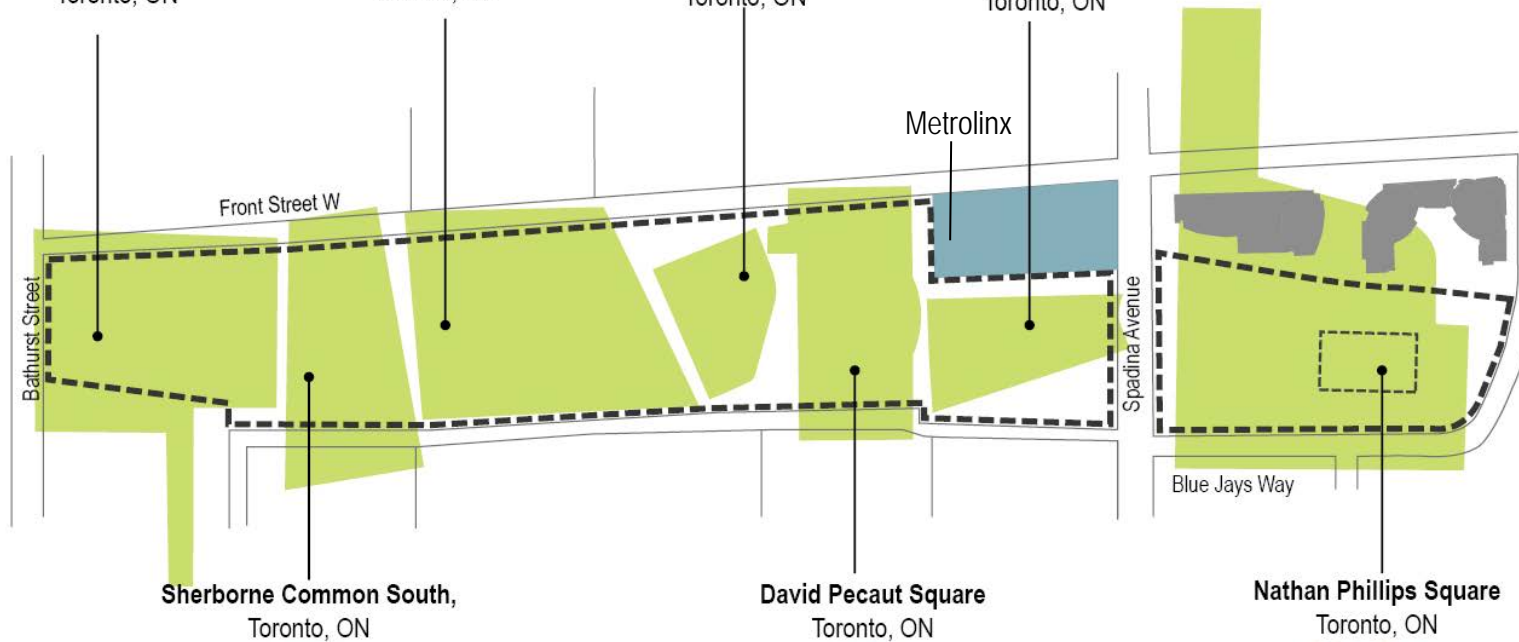
Regent Park Athletic Grounds
Toronto, ON



Dundas Square
Toronto, ON



Berczy Park
Toronto, ON



Sherborne Common South
Toronto, ON



David Pecaut Square
Toronto, ON



Nathan Phillips Square
Toronto, ON

Rail Deck Park Secondary Plan Area



1

Rail Corridor Site

2

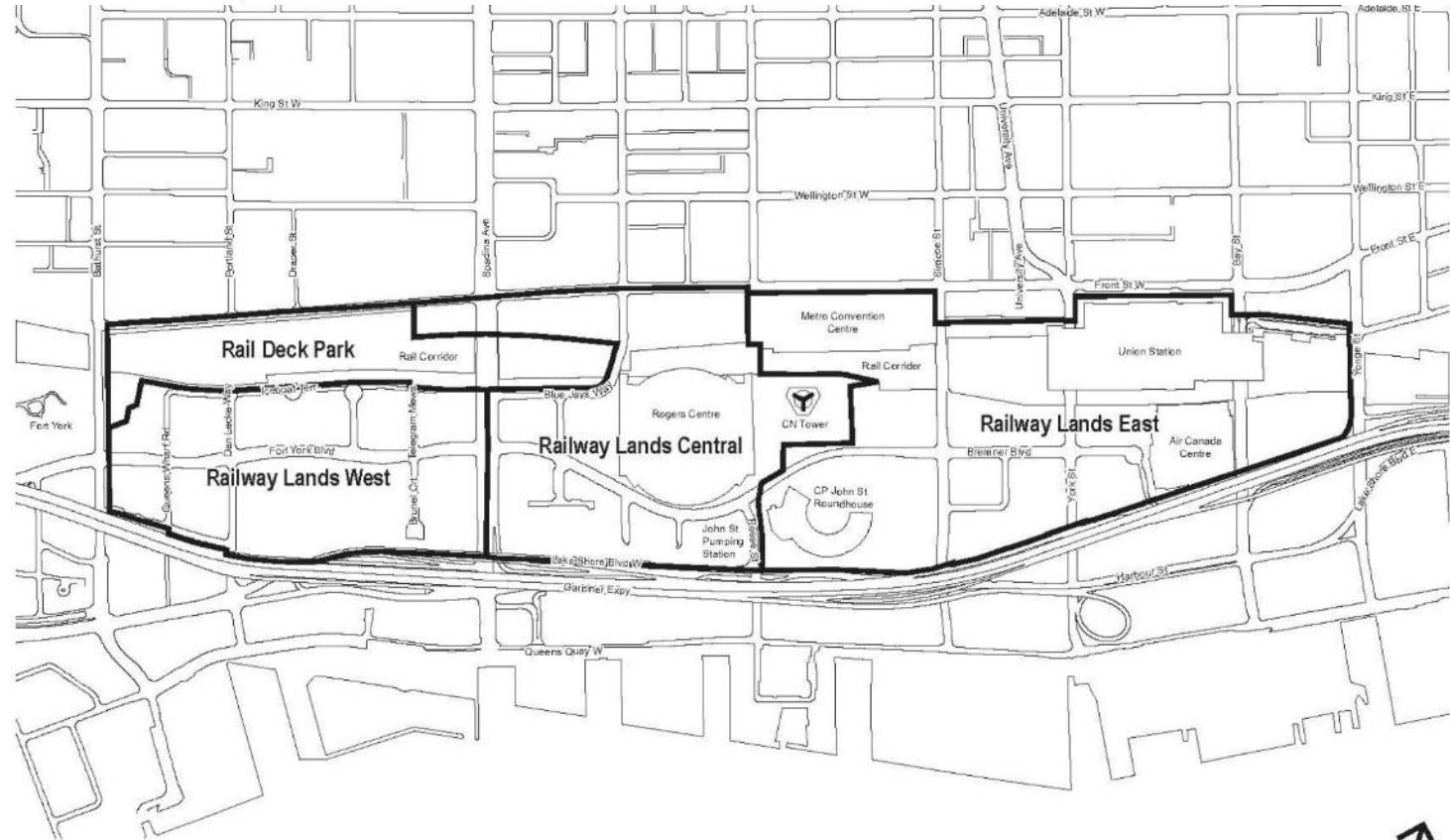
Mouth of the Creek Park

3

Northern Linear Park

Official Plan Amendment (OPA)

- Creates a new Rail Deck Park Secondary Plan within the Railway Lands Planning Framework
- Designates the site as *Parks and Open Space*, while supporting existing/future rail operations
- Improves connections between the Downtown and the waterfront
- Outlines requirements for a Parks and Public Realm Master Plan and Implementation Plan
- Integrates with Metrolinx Spadina GO RER Station and corridor electrification.



Not to Scale

Vision

Rail Deck Park will transform the space above an active rail corridor in the heart of one of Downtown's fastest-growing communities into a signature public park. It will be a beautiful and bustling place which acts as a major destination for people from across and outside Toronto, while serving the immediate community. Rail Deck Park is a long-term commitment to quality of life for all Torontonians.



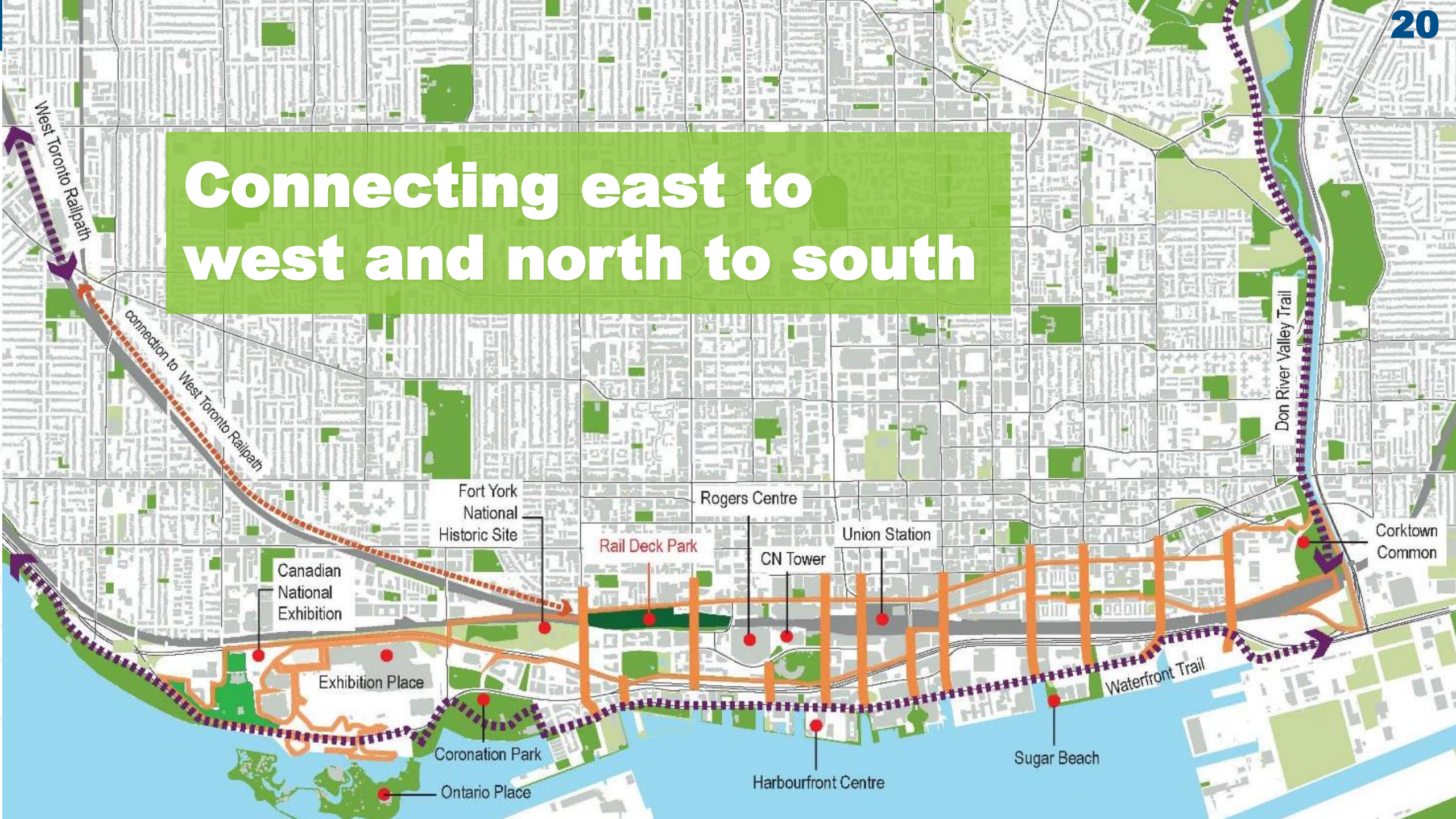
1. Toronto's Park



2. Enhance Connectivity and Accessibility



Connecting east to west and north to south



3. Create a Place to Gather and Celebrate



4. Invest in Resiliency and Green Infrastructure



5. Support and Integrate Rail



6. Acknowledge and Conserve the History of the Railway lands



A once-in-a-generation opportunity

