

Dedication of a Portion of Eastern Avenue Formerly Closed by By-law for Incorporation into the West Don Lands Revitalization Project

Date: December 12, 2016
To: Toronto East York Community Council
From: Acting Director, Transportation Services, Toronto and East York District
Wards: Ward 28 - Toronto-Centre Rosedale

SUMMARY

Transportation Services recommends that a portion of Eastern Avenue which was previously closed by By-law No. 382-2006, be re-dedicated for public highway purposes to form part of Eastern Avenue.

RECOMMENDATIONS

The Acting Director, Transportation Services recommends that:

1. City Council dedicate the portion of Eastern Avenue, shown as Part 1 on Sketch No. PS-2013-051 (the "Highway"), attached to the report dated December 12, 2016 from the Acting Director, Transportation Services, Toronto and East York District, for public highway purposes to form part of the public highway Eastern Avenue.
2. City Council enact a by-law substantially in the form of the draft by-law attached as Attachment "1" to the report dated December 12, 2016, from the Acting Director, Transportation Services, Toronto and East York District; and
3. City Council direct the appropriate City officials to take whatever action is necessary to give effect thereto, including the introduction in Council of any bills that might be necessary.

FINANCIAL IMPACT

There are no financial implications from the adoption of this report.

The Deputy City Manager and Chief Financial Officer has reviewed this report and agrees with the financial impact information.

DECISION HISTORY

A portion of Eastern Avenue was closed by By-law No. 382-2006, and, together with other lands, was leased to Ontario Realty Corporation (ORC), as agent for Her Majesty the Queen in right of Ontario, for inclusion in the West Don Lands Revitalization Project.

COMMENTS

Effective as of April 16, 2016, Ontario Infrastructure and Land Corporation (successor to ORC) terminated the lease pursuant to its early termination rights under the lease, as it no longer required the use of the leased lands.

As the Highway provides the only vehicular access to the abutting properties, it is necessary and appropriate to dedicate the Highway for public highway purposes in order to provide legal access to these properties.

CONTACT

Lukasz Pawlowski, Acting Manager, Traffic Planning, Toronto and East York District
Phone: 416-392-7713; Facsimile: 416-392-1920; E-mail: Lukasz.Pawlowski@toronto.ca

SIGNATURE

Dave Twaddle, CET
Acting Director
Transportation Services
Toronto and East York District

ATTACHMENTS

Attachment 1: Draft By-law
Attachment 2: Sketch No, PS-2013-051, dated May 17, 2013.

P:\2016\Cluster B\Tra\Top\Ts2016234te.top.doc. - acb

Dedication of a Portion of Eastern Avenue Formerly Closed
by By-law for Incorporation into the West Don Lands Revitalization Project

ATTACHMENT "1"

Authority: Toronto and East York Community Council Item TE(insert number), as adopted by City of Toronto Council on (date item was adopted by City Council)

Bill No. CITY OF TORONTO
BY-LAW No. -2016

To dedicate land east of St. Lawrence Street for public highway purposes to form part of the public highway Eastern Avenue.

Whereas the City is the owner of certain land required for public highway purposes;

The Council of the City of Toronto enacts:

1. Certain land described as follows, namely:

Part of PIN 21078-0184 (LT)
PCL 1-1 SEC A34E
Part of Eastern Avenue on Plan 108 designated as PART 2 on
Plan 66R-22380 EXCEPT 66M2473

City of Toronto and Province of Ontario
Land Titles Division of the Toronto Registry Office (No. 66)

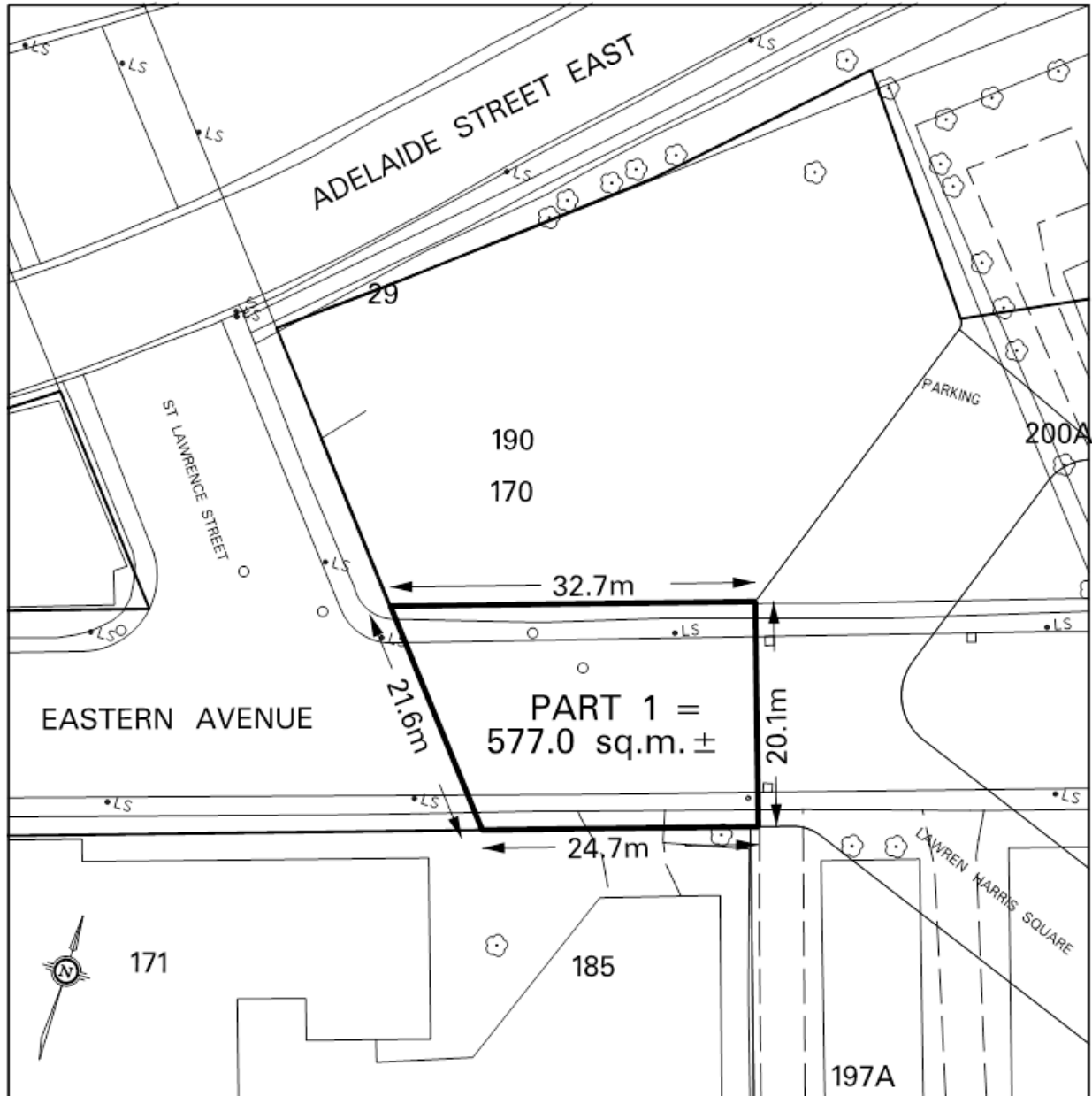
is dedicated for public highway purposes to form part of the public highway Eastern Avenue.

Enacted and passed on , 2016.

Frances Nunziata,
Speaker

Ulli S. Watkiss,
City Clerk

(Seal of the City)



Toronto
 TECHNICAL SERVICES DIVISION
 SURVEY & UTILITY MAPPING

NOTE:
 THIS SKETCH HAS BEEN
 COMPILED FROM OFFICE
 RECORDS. MEASUREMENTS
 ARE APPROXIMATE

CHECK BY JOHN HOUSE
 PREPARED BY: DWAYNE PITT

PROPERTY INFORMATION SHEET

CITY OWNED LAND

ABUTTING THE EAST LIMIT OF EASTERN AVENUE
 AT ST. LAWRENCE STREET

WARD 28 - TORONTO CENTRE-ROSEDALE
 DATE: MAY 17, 2013

SKETCH No. PS-2013-051