

## **Parking Amendments - Walseley Street**

**Date:** February 12, 2018  
**To:** Toronto and East York Community Council  
**From:** Director, Public Realm Section, Transportation Services  
**Wards:** Ward 20 (Trinity-Spadina)

### **SUMMARY**

---

This staff report is about a matter that Community Council has delegated authority to make a final decision, provided that it is not amended in a manner that varies with City policy or by-laws.

Transportation Services is requesting approval to amend the existing parking regulations on Walseley Street, between Bathurst Street and Ryerson Avenue. The proposed changes will change the current parking regulations which alternates parking from the north side of the street to the south every 15 days during summer months. This change to north side parking will facilitate a boulevard widening at the intersection of Walseley Street and Ryerson Avenue to increase pedestrian safety and allow Theatre Passé Muralle to improve accessibility and provide space for other public realm improvements.

### **RECOMMENDATIONS**

---

The Director, Public Realm Section, Transportation Services recommends that:

1. Toronto and East York Community Council rescind the existing parking prohibition in effect from the 16th day to the last day of each month from April 1st to November 30th, inclusive on the north side of Walseley Street, between Bathurst Street and Ryerson Avenue.
2. Toronto and East York Community Council rescind the existing parking prohibition in effect from the 1st to the 15th day of each month, from April 1st to November 30th, inclusive on the south side of Walseley Street, between Bathurst Street and Ryerson Avenue.

3. Toronto and East York Community Council rescind the existing parking prohibition in effect at all times from December 1st of one year to March 31st of the next following year, inclusive on the south side of Wolseley Street, between Bathurst Street and Ryerson Avenue.

4. Toronto and East York Community Council rescind the existing permit parking regulation in effect 12:01 a.m. to 10:00 a.m. from the 1st to the 15th day of each month from April 1st to November 30th, inclusive, and from December 1st of one year to March 31st of the next following year, inclusive on the odd (south) side of Wolseley Street, between Bathurst Street and Ryerson Avenue.

5. Toronto and East York Community Council amend the existing permit parking regulation in effect 12:01 a.m. to 10:00 a.m. from the 16th day to the last day of each month from April 1st to November 30th, inclusive on the even (north) side of Wolseley Street, between Bathurst Street and Ryerson Avenue, to be in effect from 12:01 a.m. to 10:00 a.m. daily.

6. Toronto and East York Community Council prohibit standing at all times on the south side of Wolseley Street, between Bathurst Street and Ryerson Avenue.

7. Toronto and East York Community Council prohibit standing at all times on the north side of Wolseley Street, between Bathurst Street and a point 25.9 metres east.

8. Toronto and East York Community Council prohibit standing at all times on the north side of Wolseley Street, between Ryerson Avenue and a point 33.3 metres west.

## **FINANCIAL IMPACT**

---

All costs associated with the necessary signage installation are included within the Transportation Services 2018 Operating Budget.

## **DECISION HISTORY**

---

This report addresses a new initiative.

## **COMMENTS**

---

Transportation Services, Toronto and East York District has been approached by Economic Development & Culture, Museum and Heritage Services staff, who are working with the operators of Theatre Passe Muraille to improve accessibility to the building. Transportation Services staff have identified an opportunity to improve pedestrian safety and provide for landscape and beautification at the intersection of Wolseley Street and Ryerson Avenue. These improvements are being coordinated by staff from both Divisions, and it would be cost effective as well as practical to implement at the same time.

The improvements include modifying the curb line, widening the boulevard area and adjusting the slope of sidewalk. These improvements will also shorten the pedestrian crossing distances at the intersection, provide additional boulevard space for bike parking, benches and greening initiatives, and improve accessibility by reducing the existing slope across the sidewalk at the main entrances.

The widening of the boulevard on Wolseley Street requires that the alternating parking regulation be revised to permit full-time parking on the north side as shown in Drawing 1 attached. Current parking supply alternates between approximately 19 spaces on the north side of the street and 9-15 spaces on the south side [6 spaces located between driveways are substandard length (less than 5.5 metres) but can accommodate smaller vehicles]. The proposed curb extensions required for the pedestrian safety improvements would result in a reduction of 4 parking spaces on the north side, leaving 15 spaces equivalent to the maximum number of spaces currently available on the south side.

Transportation Services is also investigating the opportunity to provide curb extensions on other sections of Ryerson Avenue to improve pedestrian safety and create an opportunity to install a bike share station. These installations would not have an impact on parking.

Councillor Joe Cressy has been advised of the recommendations of this staff report.

## **CONTACT**

---

Mark Van Elsberg  
Project Manager  
Public Realm Section  
Transportation Services  
Telephone: 416-397-4863  
E-mail: [Mark.vanElsberg@toronto.ca](mailto:Mark.vanElsberg@toronto.ca)

## **SIGNATURE**

---

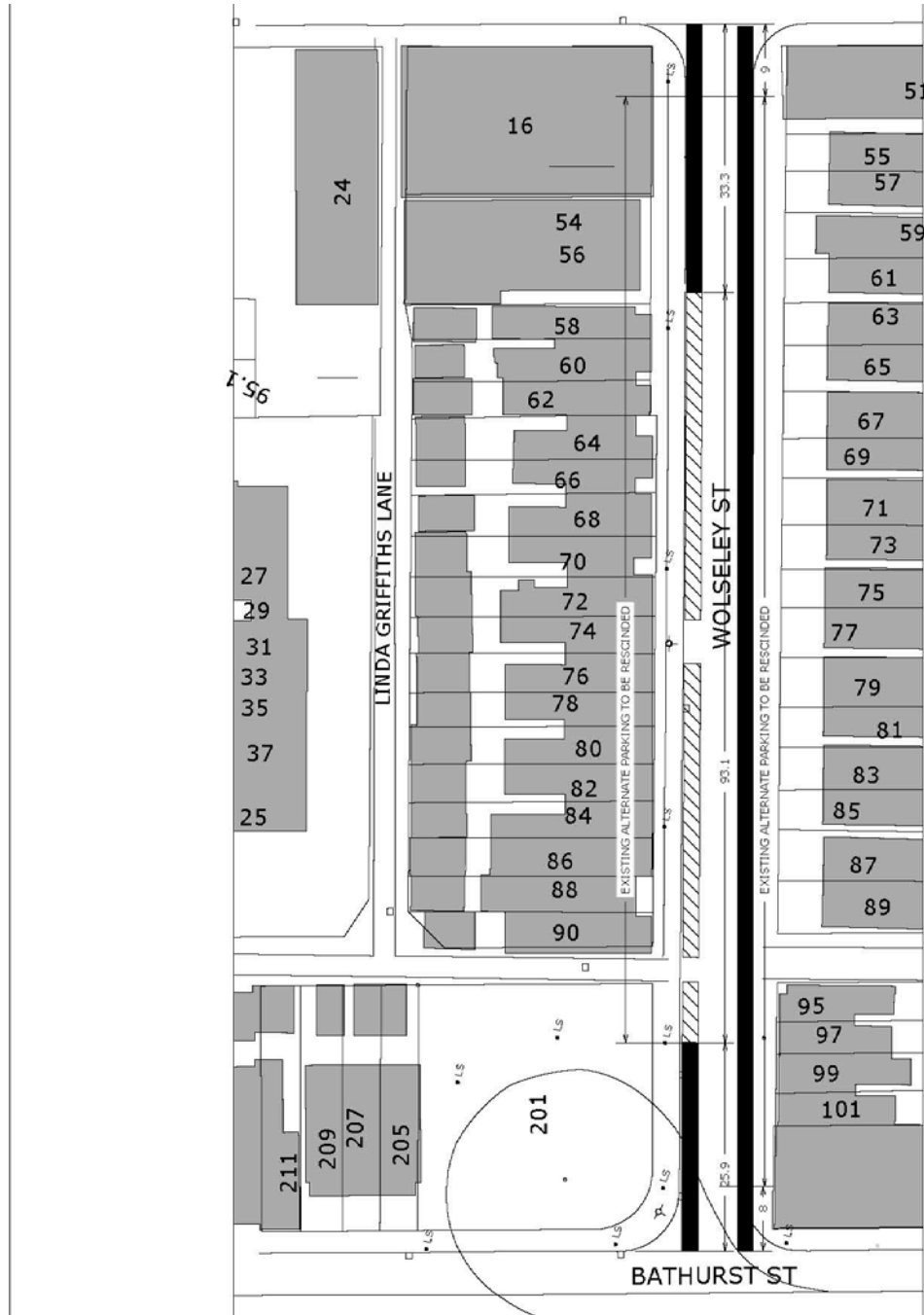
Elyse Parker  
Director, Public Realm Section  
Transportation Services

## **ATTACHMENTS**

---

Drawing 1 - Parking Amendments - Wolseley Street

# Drawing 1 - Parking Amendments - Wolseley Street



LEGEND  
 PROPOSED NO STANDING ANYTIME  
 PROPOSED PERMIT PARKING

WOLSELEY STREET : PROPOSED PARKING REGULATIOI

IN THIS PLAN IS BASED ON OFFICE RECORDS AND IS SUBJECT TO VERIFICATION.

BRUARY, 2018 SCALE - 1:1NTS TRANSPORTATION SERVICES PUBL