

## **Parking Amendments - Woodbine Avenue**

Date: June 13, 2018  
To: Toronto and East York Community Council  
From: Acting Director, Transportation Services, Toronto and East York District  
Wards: Ward 31, Beaches-East York, Ward 32 - Beaches-East York

### **SUMMARY**

---

As the Toronto Transit Commission (TTC) operates a transit service on Woodbine Avenue, City Council approval of this report is required.

Transportation Services is requesting approval to amend the parking regulations on Woodbine Avenue at Burgess Avenue and at the driveway of No. 1071 Woodbine Avenue. As part of this report, we are also recommending the installation of five additional on-street parking spaces, three south of Heyworth Crescent, one south of Dixon Avenue, and one north of Lumsden Avenue/Mortimer Avenue.

The proposed recommendations will address reduced sightline and safety concerns expressed by area residents and businesses, and, will result in the removal of a total of four on-street parking spaces, three near the driveway of No. 1071, and one as a result of the relocation of an accessible parking space near Burgess Avenue. To compensate, five new on-street parking spaces will be established.

### **RECOMMENDATIONS**

---

The Acting Director, Transportation Services, Toronto and East York District, recommends that:

1. City Council adopt the parking regulations as outlined in Appendix "D" attached to the report entitled, "Parking Amendments - Woodbine Avenue", from the Acting Director, Transportation Services, Toronto and East York District.

### **FINANCIAL IMPACT**

---

All costs associated with the necessary signage installation on Woodbine Avenue are included within the Transportation Services 2018 Operating Budget.

## **DECISION HISTORY**

---

At its meeting on January 31, 2017, City Council adopted TE21.39 and approved the installation of an on-street accessible parking space on Woodbine Avenue south of Burgess Avenue.

<http://app.toronto.ca/tmmis/viewAgendaItemHistory.do?item=2017.TE21.39>

At its meeting on October 5, 2016, Public Works Committee adopted PW15.10 and approved the installation of northbound and southbound cycle tracks and bicycle lanes on Woodbine Avenue, from O'Connor Drive to Queen Street East.

<http://app.toronto.ca/tmmis/viewAgendaItemHistory.do?item=2016.PW15.10>

## **COMMENTS**

---

Transportation Services, on behalf of Councillor Davis and Councillor McMahon, local business, and the residents of No. 1071 Woodbine Avenue, was requested to review sightline and safety concerns, as well as the lack of on-street parking at various locations along Woodbine Avenue.

Area residents have concerns with regards to obstructed visibility caused by on-street parking, specifically at the driveway of No.1071 Woodbine Avenue, and at Burgess Avenue. In addition, the local business have also requested additional on-street parking on Woodbine Avenue near Heyworth Crescent, Dixon Avenue, and north of Lumsden Avenue /Mortimer Avenue.

Woodbine Avenue, between Kingston Road and Milverton Boulevard is designated as a two-way north/south major arterial roadway, with a daily traffic volume of about 20,000 vehicles. The posted speed limit is 40 km/h, the pavement width is approximately 15.2 metres, with cycle lanes and sidewalks provided on both sides of the street. TTC service on this section Woodbine Avenue is provided by the "93 Parkview Hills" and "91 Woodbine" transit buses.

Burgess Avenue is classified as a two-way east/west local road that intersection the east side of Woodbine Avenue in a "T" type intersection.

No. 1071 Woodbine Avenue is an apartment building located on the east side of Woodbine Avenue between Milverton Boulevard (north intersection) and Glebeholme Boulevard.

An on-site investigation conducted by staff has confirmed the sightline issue experienced by motorists exiting the driveway of No. 1071 Woodbine Avenue. It was noted by staff that with the introduction of bike lanes on Woodbine Avenue, westbound motorists exiting the driveway of No. 1071 experience difficulty viewing northbound and southbound traffic on Woodbine Avenue due to on-street parking. Similarly, a westbound motorist on Burgess Avenue view of northbound traffic on Woodbine Avenue is obstructed by an accessible parking space. As such, staff recommends the extension of an existing no stopping anytime prohibition on Woodbine Avenue in order to deter motorists from parking close to the driveway of No. 1071, as well as for Burgess Avenue. This proposal will result in the loss of a total of four parking spaces on Woodbine Avenue, one north of and two south of the driveway of No.1071 Woodbine Avenue, as well as one on-street parking space south of Burgess Avenue. The accessible parking space will be relocated further south, and there is no permit parking in this section of Woodbine Avenue.

Lastly, in order to accommodate the business along Woodbine Avenue, staff supports the installation of five new parking spaces on Woodbine Avenue, three south of Heyworth Crescent, one south of Dixon Avenue, as well as one north of Lumsden Avenue/Mortimer Avenue.

### **Housekeeping Issues**

A staff review also detected inconsistencies in the traffic by-laws related to the current signed parking regulations on Woodbine Avenue. These inconsistencies will be resolved with the approval of the recommendations outlined in Appendix "D".

Councillor Janet Davis and Councillor Mary-Margaret McMahon have been advised of the recommendations of this staff report.

## CONTACT

---

Bruce Clayton  
Manager, Traffic Operations  
Toronto and East York District  
Transportation Services  
Telephone: (416) 397-5021  
Fax: (416) 392-1920  
E-mail: [Bruce.Clayton@toronto.ca](mailto:Bruce.Clayton@toronto.ca)

## SIGNATURE

---

Dave Twaddle, C.E.T.  
Acting Director, Transportation Services  
Toronto and East York District

## ATTACHMENTS

---

1. Appendix A - Parking Amendments - Woodbine Avenue
2. Appendix B - Drawing No. T470M38, dated June 8, 2018  
Woodbine Avenue and Dunkirk Road - On-street Parking Amendments
3. Appendix C - Drawing No. T470M38, dated June 8, 2018  
Woodbine Avenue and Glebeholme Boulevard - ON-street Parking Amendments
4. Appendix D - Drawing No. T470M38, dated June 8, 2018  
Woodbine Avenue and Burgess Avenue - Accessible Parking Amendments
5. Appendix E - Drawing No. T470M38, dated June 8, 2018  
Woodbine Avenue and Heyworth Crescent - On-street Parking Amendment
6. Appendix F - Drawing No. T470M38, dated June 8, 2018  
Woodbine Avenue and Dixon Avenue - On-street Parking Amendment

P:\2018\Cluster B\Tra\Toronto and East York\Top\Ts2018140te.top.doc - mb

APPENDIX A

**Parking Amendments - Woodbine Avenue**

**TO BE RESCINDED**

**No Parking**

Highway	Side	Between	Prohibited Times and/or Days
Woodbine Avenue	West	A point 45 metres north of Danforth Avenue and a point 75 metres north of Danforth Avenue	7:00 a.m. to 9:00 a.m. 4:00 p.m. to 6:00 p.m. Mon. to Fri., except public holidays

**No Stopping**

Highway	Side	Between	Prohibited Times and/or Days
Woodbine Avenue	East	Queen Street East and a point 67.5 metres north	Anytime
Woodbine Avenue	East	A point 19.6 metres south of Hartford Avenue and a point 11.8 metres north of Hartford Avenue	Anytime
Woodbine Avenue	East	A point 26 metres north of Hartford Avenue and a point 32 metres north of Norway Avenue	Anytime
Woodbine Avenue	East	A point 103 metres north of Norway Avenue and a point 9.8 metres north of Heyworth Crescent	Anytime
Woodbine Avenue	East	A point 60 metres north of Heyworth Crescent and a point 49.1 metres north of Corley Avenue	Anytime
Woodbine Avenue	East	A point 67.6 metres north of Corley Avenue and a point 11.6 metres north of Duvernet Avenue	Anytime
Woodbine Avenue	East	A point 24 metres north of Duvernet Avenue and a point 45 metres north of Duvernet Avenue	Anytime
Woodbine Avenue	East	A point 8.9 metres south of Burgess Avenue and a point 10 metres north of Burgess Avenue	Anytime

Woodbine Avenue	East	A point 16 metres north of Burgess Avenue and a point 10.2 metres north of Cassels Avenue	Anytime
Woodbine Avenue	East	A point 73.8 metres north of Gerrard Street East and a point 31.1 metres north of Mendel Avenue	Anytime
Woodbine Avenue	East	A point 74.1 metres south of Danforth Avenue and a point 38 metres north of Strathmore Boulevard	Anytime
Woodbine Avenue	East	A point 83.8 metres south of Milverton Boulevard and a point 9 metres north of Milverton Boulevard	Anytime
Woodbine Avenue	East	A point 65.5 metres south of Sammon Avenue and a point 18.4 metres north of Sammon Avenue	Anytime
Woodbine Avenue	East	A point 104.8 metres south of Lumsden Avenue and a point 92.1 metres north of Lumsden Avenue	Anytime
Woodbine Avenue	East	A point 48.6 metres south of Barker Avenue and a point 41.8 metres north of Barker Avenue	Anytime
Woodbine Avenue	East	A point 30.3 metres south of Holborne Avenue and a point 47.7 metres north of Holborne Avenue	Anytime
Woodbine Avenue	East	A point 15.4 metres south of Virginia Avenue and a point 9 metres north of Virginia Avenue	Anytime
Woodbine Avenue	East	A point 19 metres north of Virginia Avenue and a point 9.4 metres north of Savoy Avenue	Anytime
Woodbine Avenue	East	A point 23.8 metres south of Bracebridge Avenue and O'Connor Drive	Anytime
Woodbine Avenue	West	A point 45 metres north of Danforth Avenue and Queen Street East	Anytime
Woodbine Avenue	West	O'Connor Drive and a point 75 metres north of Danforth Avenue	Anytime

### Parking Machines

Highway	Side Parking	Between	Hours	Fee/Time Limit	Maximum Parking Period
Woodbine Avenue	West	A point 45 metres north of Danforth Avenue and a point 75 metres north of Danforth Avenue	9:00 a.m. to 4:00 p.m. Mon. to Fri.; 8:00 a.m. to 6:00 p.m. Sat.	\$2.00 for 1 hour	3 hours

### Designated On-Street Parking for Persons with Disabilities

Highway	Side	Between	Times or Days
Woodbine Avenue	East	A point 84.5 metres north of Duvernet Avenue and a point 5.5 metres further north	Anytime

### TO BE ENACTED

#### No Stopping

Highway	Side	Between	Prohibited Times and/or Days
Woodbine Avenue	West	O'Connor Drive and Queen Street East	Anytime
Woodbine Avenue	East	Queen Street East and a point 67.5 metres north	Anytime
Woodbine Avenue	East	A point 30 metres south of Hartford Avenue and a point 11.8 metres north of Hartford Avenue	Anytime
Woodbine Avenue	East	A point 35 metres north of Hartford Avenue and a point 35 metres north of Norway Avenue	Anytime
Woodbine Avenue	East	A point 103 metres north of Norway Avenue and a point 24.5 metres south of Heyworth Crescent	Anytime
Woodbine Avenue	East	A point 9.5 metres south of Heyworth Crescent and a point 9.5 metres north of Heyworth Crescent	Anytime

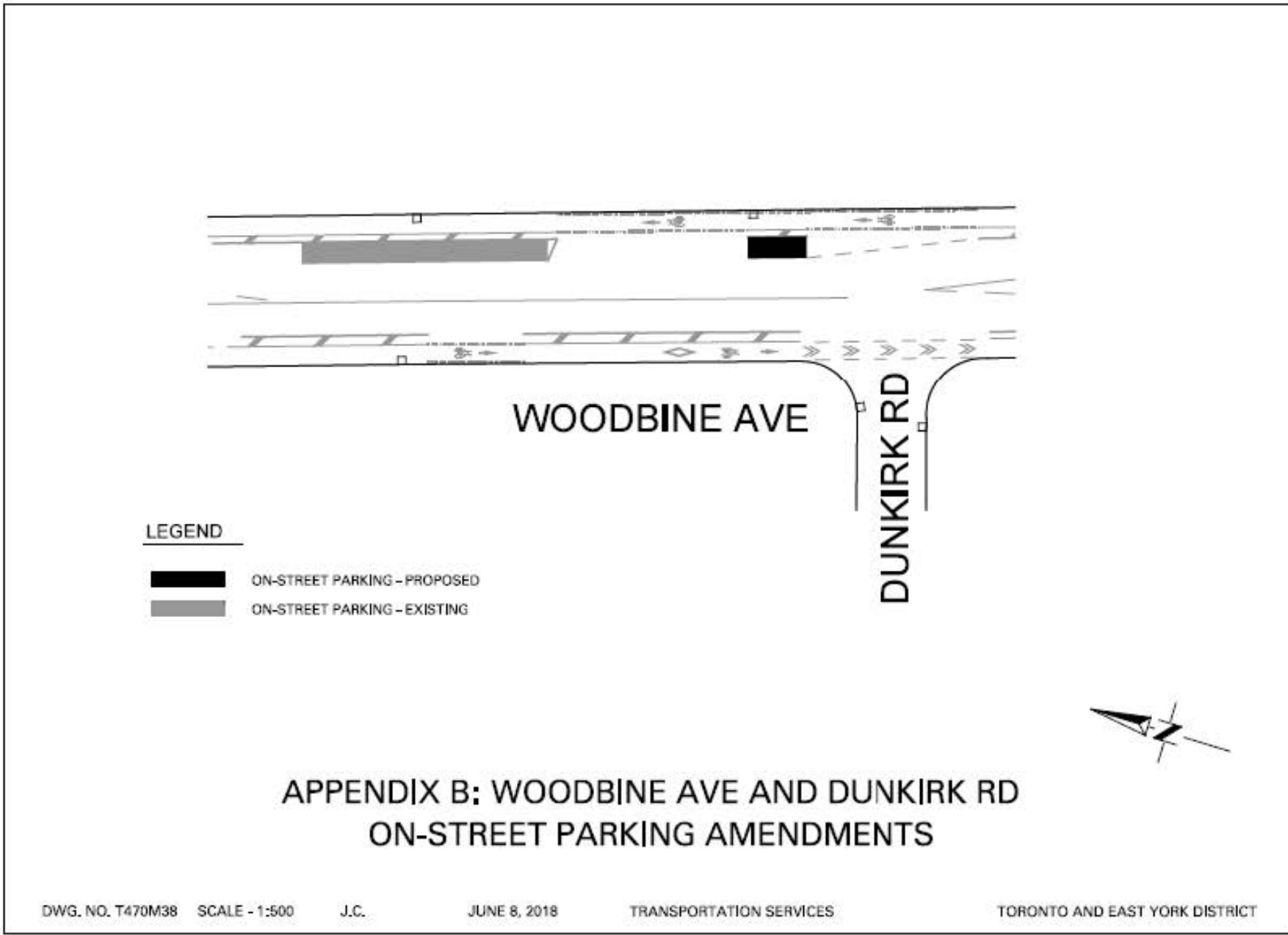
Woodbine Avenue	East	A point 60 metres north of Heyworth Crescent and a point 49.1 metres north of Corley Avenue	Anytime
Woodbine Avenue	East	A point 67.6 metres north of Corley Avenue and a point 10 metres north of Duvernet Avenue	Anytime
Woodbine Avenue	East	A point 26 metres north of Duvernet Avenue and a point 43 metres north of Duvernet Avenue	Anytime
Woodbine Avenue	East	A point 14.5 metres south of Burgess Avenue and a point 10 metres north of Burgess Avenue	Anytime
Woodbine Avenue	East	A point 16 metres north of Burgess Avenue and a point 10.2 metres north of Cassels Avenue	Anytime
Woodbine Avenue	East	A point 76 metres south of Gerrard Street East and a point 34 metres north of Mendel Avenue	Anytime
Woodbine Avenue	East	A point 74.1 metres south of Danforth Avenue and a point 38 metres north of Strathmore Boulevard	Anytime
Woodbine Avenue	East	A point 118 metres south of Milverton Boulevard (north intersection) and a point 12 metres north of Milverton Boulevard (north intersection)	Anytime
Woodbine Avenue	East	A point 65.5 metres south of Sammon Avenue and a point 18.4 metres north of Sammon Avenue	Anytime
Woodbine Avenue	East	A point 104.8 metres south of Lumsden Avenue and a point 67.5 metres north of Lumsden Avenue	Anytime
Woodbine Avenue	East	A point 48.6 metres south of Barker Avenue and a point 41.8 metres north of Barker Avenue	Anytime
Woodbine Avenue	East	A point 30.3 metres south of Holborne Avenue and a point 47.7 metres north of Holborne Avenue	Anytime



Woodbine Avenue	East	A point 15.4 metres south of Virginia Avenue and a point 9 metres north of Virginia Avenue	Anytime
Woodbine Avenue	East	A point 19 metres north of Virginia Avenue and a point 9.4 metres north of Savoy Avenue	Anytime
Woodbine Avenue	East	A point 23.8 metres south of Bracebridge Avenue and O'Connor Drive	Anytime



**Designated On-Street Parking for Persons with Disabilities**

<b>Highway</b>	<b>Side</b>	<b>Between</b>	<b>Times or Days</b>
Woodbine Avenue	East	A point 79.5 metres north of Duvernet Avenue and a point 5.5 metres further north	Anytime

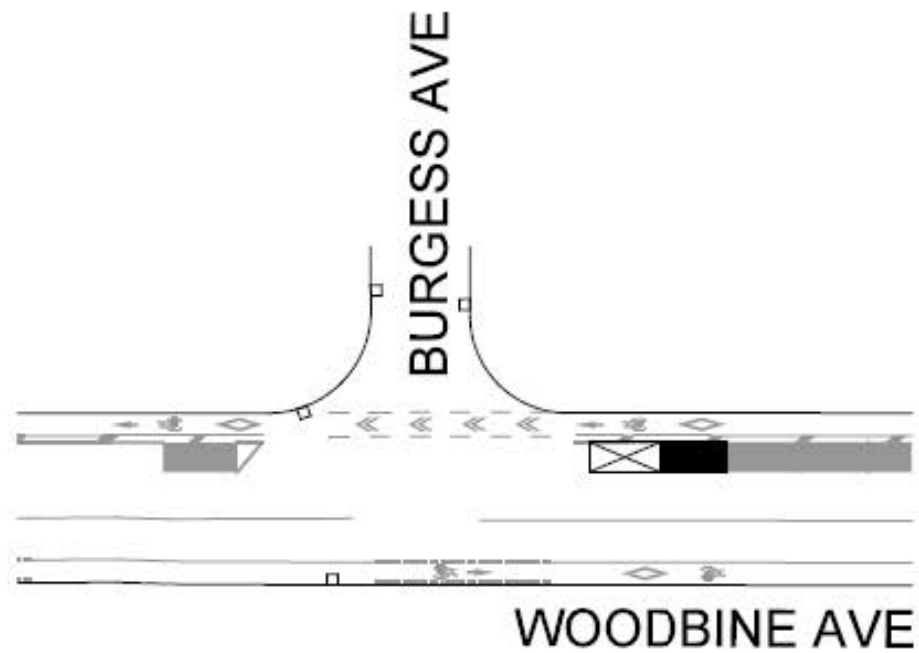







**LEGEND**

-  ON-STREET PARKING - TO BE REMOVED
-  ON-STREET PARKING - EXISTING

**APPENDIX C: WOODBINE AVE AND GLEBEHOLME BLVD  
ON-STREET PARKING AMENDMENTS**

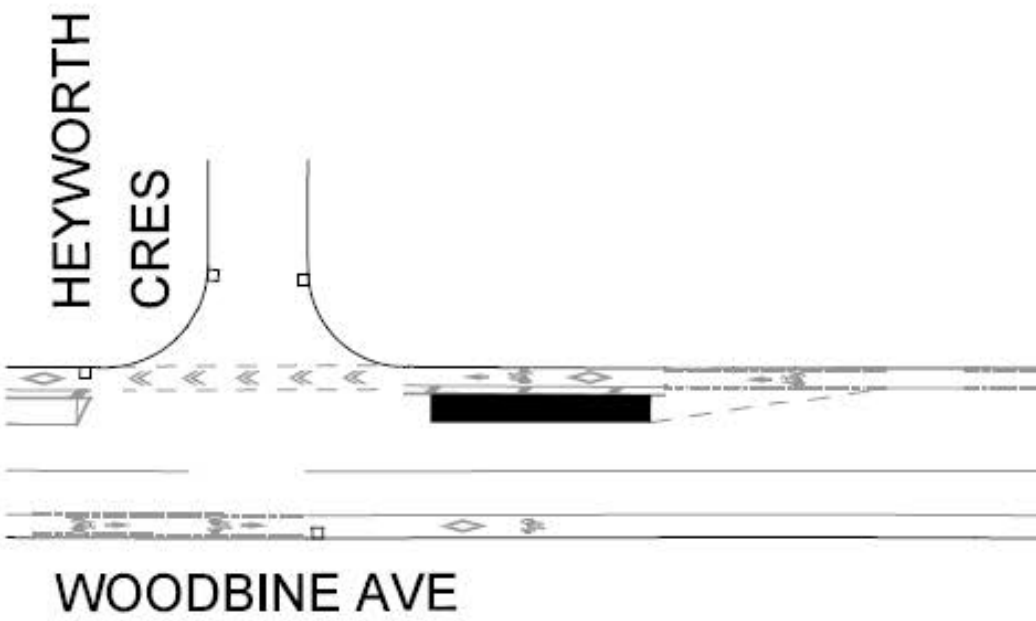


**LEGEND**

-  ACCESSIBLE PARKING SPACE - TO BE REMOVED
-  ACCESSIBLE PARKING SPACE - PROPOSED
-  ON-STREET PARKING - EXISTING

**APPENDIX D: WOODBINE AVE AND BURGESS AVE  
ACCESSIBLE PARKING AMENDMENTS**



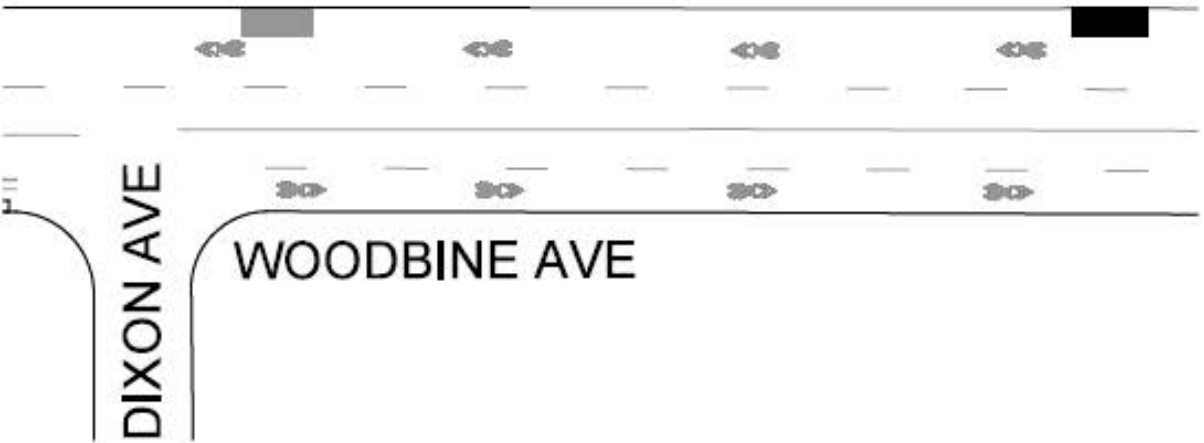


LEGEND


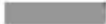
 ON-STREET PARKING - PROPOSED



APPENDIX E: WOODBINE AVE AND HEYWORTH CRES  
ON-STREET PARKING AMENDMENT



LEGEND

-  ON-STREET PARKING - PROPOSED
-  ON-STREET PARKING - EXISTING



## APPENDIX F: WOODBINE AVE AND DIXON AVE ON-STREET PARKING AMENDMENT