

Public Appendix B -

THIS DRAWING, AS AN INSTRUMENT OF SERVICE, IS PROVIDED BY AND IS THE PROPERTY OF GRAZIANI+CORAZZA ARCHITECTS INC. THE CONTRACTOR MUST VERIFY AND ACCEPT RESPONSIBILITY FOR ALL DIMENSIONS AND CONDITIONS ON SITE AND MUST NOTIFY GRAZIANI+CORAZZA ARCHITECTS INC. OF ANY VARIATIONS FROM THE SUPPLIED INFORMATION. GRAZIANI+CORAZZA ARCHITECTS INC. IS NOT RESPONSIBLE FOR THE ACCURACY OF SURVEY, STRUCTURAL, MECHANICAL, ELECTRICAL, AND OTHER ENGINEERING INFORMATION SHOWN ON THIS DRAWING. REFER TO THE APPROPRIATE ENGINEERING DRAWINGS BEFORE PROCEEDING WITH THE WORK. CONSTRUCTION MUST CONFORM TO ALL APPLICABLE CODES AND REQUIREMENTS OF THE AUTHORITIES HAVING JURISDICTION. UNLESS OTHERWISE NOTED, NO INVESTIGATION HAS BEEN UNDERTAKEN OR REPORTED ON BY THIS OFFICE IN REGARDS TO THE ENVIRONMENTAL CONDITION OF THIS SITE.

THIS DRAWING IS NOT TO BE SCALED. ALL ARCHITECTURAL SYMBOLS INDICATED ON THIS DRAWING ARE GRAPHIC REPRESENTATIONS ONLY.

CONDITIONS FOR ELECTRONIC INFORMATION TRANSFER:

ELECTRONIC INFORMATION IS SUPPLIED TO THE OTHER ASSOCIATED FIRMS TO ASSIST THEM IN THE EXECUTION OF THEIR WORK/REVIEW. THE RECEIVING FIRMS MUST DETERMINE THE COMPLETENESS/APPROPRIATENESS/RELEVANCE OF THE INFORMATION IN RESPECT TO THEIR PARTICULAR RESPONSIBILITY.

GRAZIANI+CORAZZA ARCHITECTS INC. SHALL NOT BE RESPONSIBLE FOR:

1. ERRORS, OMISSIONS, INCOMPLETENESS DUE TO LOSS OF INFORMATION IN WHOLE OR PART WHEN INFORMATION IS TRANSFERRED.
2. TRANSMISSION OF ANY VIRUS OR DAMAGE TO THE RECEIVING ELECTRONIC SYSTEM WHEN INFORMATION IS TRANSFERRED.

GFA - City of Toronto By Law 569 - 2013 (m2)																		
Floor	Settlement Package - July 2018						Proposed Settlement Revisions - March 12 2019											
	Tower A			Tower B			Tower C			Tower A			Tower B			Tower C		
	Res.	Retail	Office	Res.	Retail	Office	Res.	Retail	Office	Res.	Retail	Office	Res.	Retail	Office	Res.	Retail	Office
1	1061	2029	528	427	2148	235	412	1638	234	534	2380	360	125	2587		291	1751	179
2		4989		1	3485				2684			4268		3528				2703
3			4703	3		3326			2684			4318	874					2703
4			4622	3		2825			2571			4192	1926					2594
5			4622	3		2785	101					4193	1924		148			
6	2152			848			931					4194	1925		950			
7	2842			1925			931			2043			1925		956			
8	2842			1925			931			2818			1925		961			
9	2842			1925			931			2818			1925		961			
10	2857			1925			931			2818			1925		961			
11	2857			1925			931			2818			1925		961			
12	2857			1925			931			2818			1925		961			
13	1641			1554			931			1552			1553		961			
14	2048			1554			931			1948			1553		961			
15	2048			1554			931			1948			1553		961			
16	2048			1554			931			1948			1553		961			
17	2048			1554			931			1948			1553		961			
18	2048			1554			931			1948			1553		961			
19	1467			1554			931			1466			1553		961			
20	943			1554			931			924			1553		961			
21	943			1554			931			924			1553		961			
22	943			1554			931			924			1553		961			
23	943			1554			931			924			1553		961			
24	943			1554			931			924			1553		961			
25	726						931			714					961			
26							931								961			
27							931								961			
28							931								961			
29							931								961			
30							931								961			
31							931								961			
32							931								961			
33															961			
TOTAL	39099	7018	14475	31488	5634	9171	25657	1638	8173	34760	2380	21526	36961	6115	0	27321	1751	8179

Total GFA	A	B	C
	60591	46293	35467
Total Res GFA		96244	
Total Non-Res. GFA		46107	
OVERALL		142351	

A	B	C
58667	43076	37250
	99041	
	39951	
	138993	

ISSUED FOR REVISIONS



RICHMOND RESIDENTIAL LIMITED PARTNERSHIP

QUEEN AND SHERBOURNE

245-285 QUEEN ST E, 348-412 RICHMOND ST E, 88-116 ONTARIO ST, 8-12 BRIGDEN PLACE TORONTO ONTARIO

PROJECT ARCHITECT: B.G.  
 ASSISTANT DESIGNER: R.L.  
 DRAWN BY: D.L.  
 CHECKED BY: D.B.  
 PLOT DATE: MAR. 12 2019  
 JOB #: 1661.18

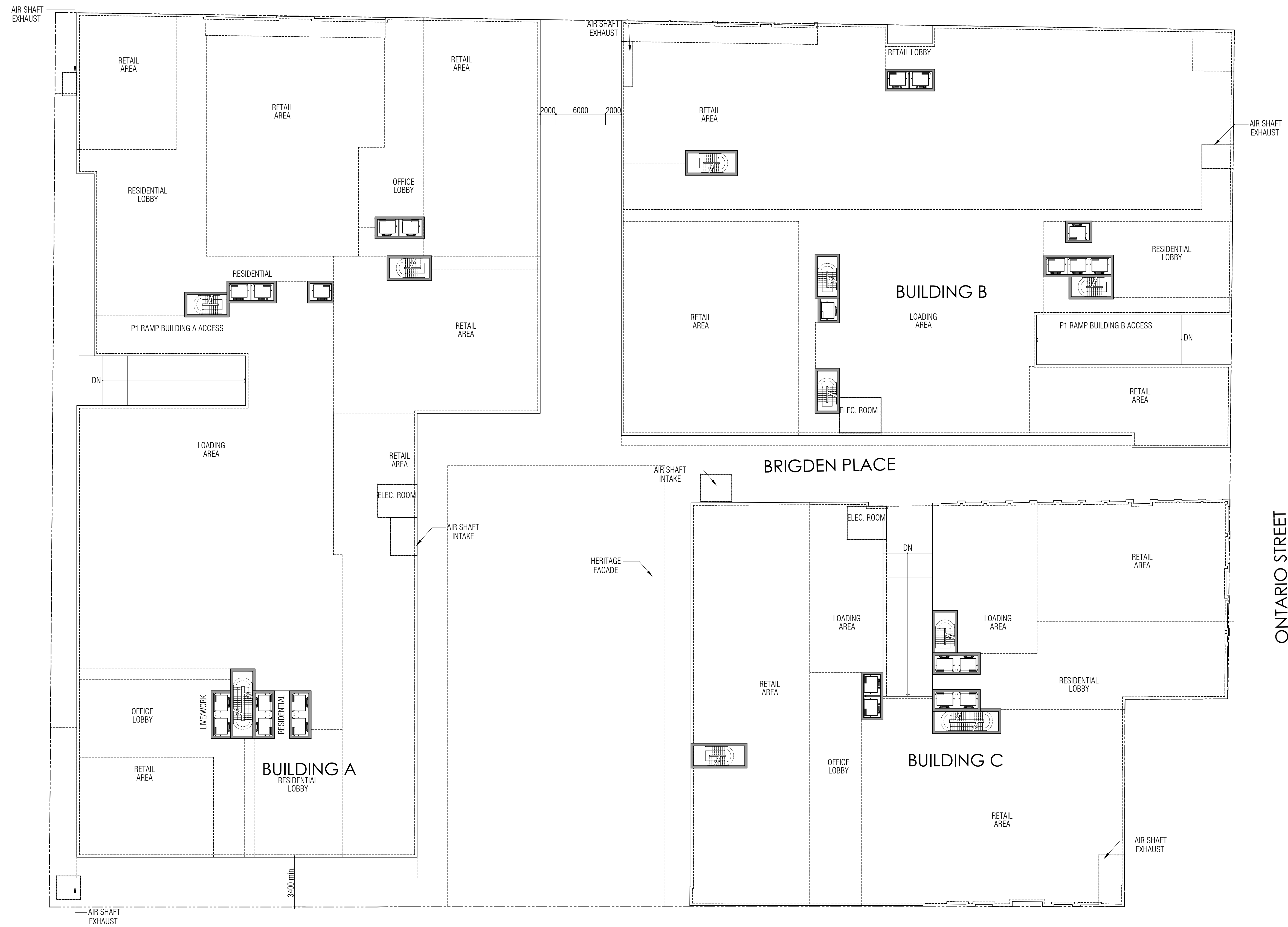
STATISTICS COMPARISON

QUEEN STREET EAST

MC. FARENS LANE

ONTARIO STREET

RICHMOND STREET



THIS DRAWING, AS AN INSTRUMENT OF SERVICE, IS PROVIDED BY AND IS THE PROPERTY OF GRAZIANI+CORAZZA ARCHITECTS INC. THE CONTRACTOR MUST VERIFY AND ACCEPT RESPONSIBILITY FOR ALL DIMENSIONS AND CONDITIONS ON SITE AND MUST NOTIFY GRAZIANI+CORAZZA ARCHITECTS INC. OF ANY VARIATIONS FROM THE SUPPLIED INFORMATION. GRAZIANI+CORAZZA ARCHITECTS INC. IS NOT RESPONSIBLE FOR THE ACCURACY OF SURVEY, STRUCTURAL, MECHANICAL, ELECTRICAL, AND OTHER ENGINEERING INFORMATION SHOWN ON THIS DRAWING. REFER TO THE APPROPRIATE ENGINEERING DRAWINGS BEFORE PROCEEDING WITH THE WORK. CONSTRUCTION MUST CONFORM TO ALL APPLICABLE CODES AND REQUIREMENTS OF THE AUTHORITIES HAVING JURISDICTION. UNLESS OTHERWISE NOTED, NO INVESTIGATION HAS BEEN UNDERTAKEN OR REPORTED ON BY THIS OFFICE IN REGARDS TO THE ENVIRONMENTAL CONDITION OF THIS SITE.

THIS DRAWING IS NOT TO BE SCALED. ALL ARCHITECTURAL SYMBOLS INDICATED ON THIS DRAWING ARE GRAPHIC REPRESENTATIONS ONLY. CONDITIONS FOR ELECTRONIC INFORMATION TRANSFER:

ELECTRONIC INFORMATION IS SUPPLIED TO THE OTHER ASSOCIATED FIRMS TO ASSIST THEM IN THE EXECUTION OF THEIR WORK. REVIEW. THE RECEIVING FIRMS MUST DETERMINE THE COMPLETENESS/APPROPRIATENESS/RELEVANCE OF THE INFORMATION IN RESPECT TO THEIR PARTICULAR RESPONSIBILITY.

- GRAZIANI+CORAZZA ARCHITECTS INC. SHALL NOT BE RESPONSIBLE FOR:
1. ERRORS, OMISSIONS, INCOMPLETENESS DUE TO LOSS OF INFORMATION IN WHOLE OR PART WHEN INFORMATION IS TRANSFERRED.
  2. TRANSMISSION OF ANY VIRUS OR DAMAGE TO THE RECEIVING ELECTRONIC SYSTEM WHEN INFORMATION IS TRANSFERRED.

ISSUED FOR REVISIONS

**GRAZIANI  
CORAZZA  
ARCHITECTS**

1320 SHAWAN DR. SUITE 100 MISSISSAUGA, ONTARIO L4W 1C3  
T.905.795.2844 F.905.795.2844 WWW.GC-ARCHITECTS.COM

RICHMOND RESIDENTIAL LIMITED PARTNERSHIP

**QUEEN AND SHERBOURNE**

245-285 QUEEN ST. E. 348-412 RICHMOND ST. E. 88-116 ONTARIO ST. 8-12 BRIGDEN PLACE  
TORONTO ONTARIO

PROJECT ARCHITECT:	B.G.
ASSISTANT DESIGNER:	R.L.
DRAWN BY:	D.L.
CHECKED BY:	D.B.
PLOT DATE:	MAR.12.2019
JOB #	1661.18

**GROUND FLOOR  
FLOOR PLAN**

1:250 **A301**

THIS DRAWING, AS AN INSTRUMENT OF SERVICE, IS PROVIDED BY AND IS THE PROPERTY OF GRAZIANI+CORAZZA ARCHITECTS INC. THE CONTRACTOR MUST VERIFY AND ACCEPT RESPONSIBILITY FOR ALL DIMENSIONS AND CONDITIONS ON SITE AND MUST NOTIFY GRAZIANI+CORAZZA ARCHITECTS INC. OF ANY VARIATIONS FROM THE SUPPLIED INFORMATION. GRAZIANI+CORAZZA ARCHITECTS INC. IS NOT RESPONSIBLE FOR THE ACCURACY OF SURVEY, STRUCTURAL, MECHANICAL, ELECTRICAL, AND OTHER ENGINEERING INFORMATION SHOWN ON THIS DRAWING. REFER TO THE APPROPRIATE ENGINEERING DRAWINGS BEFORE PROCEEDING WITH THE WORK. CONSTRUCTION MUST CONFORM TO ALL APPLICABLE CODES AND REQUIREMENTS OF THE AUTHORITIES HAVING JURISDICTION. UNLESS OTHERWISE NOTED, NO INVESTIGATION HAS BEEN UNDERTAKEN OR REPORTED ON BY THIS OFFICE IN REGARDS TO THE ENVIRONMENTAL CONDITION OF THIS SITE.

THIS DRAWING IS NOT TO BE SCALED. ALL ARCHITECTURAL SYMBOLS INDICATED ON THIS DRAWING ARE GRAPHIC REPRESENTATIONS ONLY. THIS DRAWING IS NOT TO BE USED FOR ELECTRONIC INFORMATION TRANSFER.

ELECTRONIC INFORMATION IS SUPPLIED TO THE OTHER ASSOCIATED FIRMS TO ASSIST THEM IN THE EXECUTION OF THEIR WORK. REVIEW THE RECEIPT FIRMS MUST DETERMINE THE COMPLETENESS / APPROPRIATENESS / RELEVANCE OF THE INFORMATION IN RESPECT TO THEIR PARTICULAR RESPONSIBILITY.

GRAZIANI+CORAZZA ARCHITECTS INC. SHALL NOT BE RESPONSIBLE FOR:

1. ERRORS, OMISSIONS, INCOMPLETENESS DUE TO LOSS OF INFORMATION IN WHOLE OR PART WHEN INFORMATION IS TRANSFERRED.
2. TRANSMISSION OF ANY VIRUS OR DAMAGE TO THE RECEIVING ELECTRONIC SYSTEM WHEN INFORMATION IS TRANSFERRED.



ISSUED FOR REVISIONS

**GRAZIANI  
CORAZZA  
ARCHITECTS**

1320 SHAWANSON DRIVE, SUITE 100 MISSISSAUGA, ONTARIO L4W 1C3  
T. 905.795.2844 F. 905.795.2844 WWW.GC-ARCHITECTS.COM

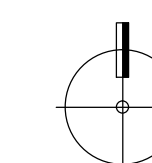
RICHMOND RESIDENTIAL LIMITED PARTNERSHIP

**QUEEN AND SHERBOURNE**

245-285 QUEEN ST E, 348-412 RICHMOND ST E, 88-116 ONTARIO ST, 8-12 BRIGDEN PLACE  
TORONTO ONTARIO

PROJECT ARCHITECT: B.G.  
ASSISTANT DESIGNER: R.L.  
DRAWN BY: D.L.  
CHECKED BY: D.B.  
PLOT DATE: MAR.12.2019  
JOB #: 1661.18

**2ND FLOOR  
FLOOR PLAN**



1:250

**A302**

TITLEBLOCK SIZE: 610 x 900

THIS DRAWING, AS AN INSTRUMENT OF SERVICE, IS PROVIDED BY AND IS THE PROPERTY OF GRAZIANI+CORAZZA ARCHITECTS INC. THE CONTRACTOR MUST VERIFY AND ACCEPT RESPONSIBILITY FOR ALL DIMENSIONS AND CONDITIONS ON SITE AND MUST NOTIFY GRAZIANI+CORAZZA ARCHITECTS INC. OF ANY VARIATIONS FROM THE SUPPLIED INFORMATION. GRAZIANI+CORAZZA ARCHITECTS INC. IS NOT RESPONSIBLE FOR THE ACCURACY OF SURVEY, STRUCTURAL, MECHANICAL, ELECTRICAL, AND OTHER ENGINEERING INFORMATION SHOWN ON THIS DRAWING. REFER TO THE APPROPRIATE ENGINEERING DRAWINGS BEFORE PROCEEDING WITH THE WORK. CONSTRUCTION MUST CONFORM TO ALL APPLICABLE CODES AND REQUIREMENTS OF THE AUTHORITIES HAVING JURISDICTION. UNLESS OTHERWISE NOTED, NO INVESTIGATION HAS BEEN UNDERTAKEN OR REPORTED ON BY THIS OFFICE IN REGARDS TO THE ENVIRONMENTAL CONDITION OF THIS SITE.

THIS DRAWING IS NOT TO BE SCALED. ALL ARCHITECTURAL SYMBOLS INDICATED ON THIS DRAWING ARE GRAPHIC REPRESENTATIONS ONLY.

CONDITIONS FOR ELECTRONIC INFORMATION TRANSFER:

ELECTRONIC INFORMATION IS SUPPLIED TO THE OTHER ASSOCIATED FIRMS TO ASSIST THEM IN THE EXECUTION OF THEIR WORK. REVIEW THE RECEIPT FIRMS MUST DETERMINE THE COMPLETENESS/APPROPRIATENESS/RELEVANCE OF THE INFORMATION IN RESPECT TO THEIR PARTICULAR RESPONSIBILITY.

GRAZIANI+CORAZZA ARCHITECTS INC. SHALL NOT BE RESPONSIBLE FOR:

1. ERRORS, OMISSIONS, INCOMPLETENESS DUE TO LOSS OF INFORMATION IN WHOLE OR PART WHEN INFORMATION IS TRANSFERRED.
2. TRANSMISSION OF ANY VIRUS OR DAMAGE TO THE RECEIVING ELECTRONIC SYSTEM WHEN INFORMATION IS TRANSFERRED.



ISSUED FOR REVISIONS

**GRAZIANI  
CORAZZA  
ARCHITECTS**

1320 SHAWANSON DRIVE, SUITE 100 MISSISSAUGA, ONTARIO L4W 1C3  
T.905.795.2844 F.905.795.2844 WWW.GC-ARCHITECTS.COM

RICHMOND RESIDENTIAL LIMITED PARTNERSHIP

**QUEEN AND SHERBOURNE**

245-285 QUEEN ST E, 348-412 RICHMOND ST E, 88-116 ONTARIO ST, 8-12 BRIGDEN PLACE  
TORONTO ONTARIO

PROJECT ARCHITECT:	B.G.
ASSISTANT DESIGNER:	R.L.
DRAWN BY:	D.L.
CHECKED BY:	D.B.
PLOT DATE:	MAR.12.2019
JOB #	1661.18

**3RD FLOOR  
FLOOR PLAN**

1:250 **A303**

THIS DRAWING, AS AN INSTRUMENT OF SERVICE, IS PROVIDED BY AND IS THE PROPERTY OF GRAZIANI+CORAZZA ARCHITECTS INC. THE CONTRACTOR MUST VERIFY AND ACCEPT RESPONSIBILITY FOR ALL DIMENSIONS AND CONDITIONS ON SITE AND MUST NOTIFY GRAZIANI+CORAZZA ARCHITECTS INC. OF ANY VARIATIONS FROM THE SUPPLIED INFORMATION. GRAZIANI+CORAZZA ARCHITECTS INC. IS NOT RESPONSIBLE FOR THE ACCURACY OF SURVEY, STRUCTURAL, MECHANICAL, ELECTRICAL, AND OTHER ENGINEERING INFORMATION SHOWN ON THIS DRAWING. REFER TO THE APPROPRIATE ENGINEERING DRAWINGS BEFORE PROCEEDING WITH THE WORK. CONSTRUCTION MUST CONFORM TO ALL APPLICABLE CODES AND REQUIREMENTS OF THE AUTHORITIES HAVING JURISDICTION. UNLESS OTHERWISE NOTED, NO INVESTIGATION HAS BEEN UNDERTAKEN OR REPORTED ON BY THIS OFFICE IN REGARDS TO THE ENVIRONMENTAL CONDITION OF THIS SITE.

THIS DRAWING IS NOT TO BE SCALED. ALL ARCHITECTURAL SYMBOLS INDICATED ON THIS DRAWING ARE GRAPHIC REPRESENTATIONS ONLY.  
CONDITIONS FOR ELECTRONIC INFORMATION TRANSFER:

ELECTRONIC INFORMATION IS SUPPLIED TO THE OTHER ASSOCIATED FIRMS TO ASSIST THEM IN THE EXECUTION OF THEIR WORK/REVIEW. THE RECEIVING FIRMS MUST DETERMINE THE COMPLETENESS/APPROPRIATENESS/RELEVANCE OF THE INFORMATION IN RESPECT TO THEIR PARTICULAR RESPONSIBILITY.

GRAZIANI+CORAZZA ARCHITECTS INC. SHALL NOT BE RESPONSIBLE FOR:

1. ERRORS, OMISSIONS, INCOMPLETENESS DUE TO LOSS OF INFORMATION IN WHOLE OR PART WHEN INFORMATION IS TRANSFERRED.
2. TRANSMISSION OF ANY VIRUS OR DAMAGE TO THE RECEIVING ELECTRONIC SYSTEM WHEN INFORMATION IS TRANSFERRED.



ISSUED FOR REVISIONS

**GRAZIANI  
CORAZZA  
ARCHITECTS**

1320 SHAWANSON DRIVE, SUITE 100 MISSISSAUGA, ONTARIO L4W 1C3  
T.905.795.2844 F.905.795.2844 WWW.GC-ARCHITECTS.COM

RICHMOND RESIDENTIAL LIMITED PARTNERSHIP

**QUEEN AND SHERBOURNE**

245-285 QUEEN ST. E. 348-412 RICHMOND ST. E. 88-116 ONTARIO ST. 8-12 BRIGDEN PLACE  
TORONTO ONTARIO

PROJECT ARCHITECT:	B.G.
ASSISTANT DESIGNER:	R.L.
DRAWN BY:	D.L.
CHECKED BY:	D.B.
PLOT DATE:	MAR.12.2019
JOB #	1661.18

**4TH FLOOR  
FLOOR PLAN**

1:250 **A304**

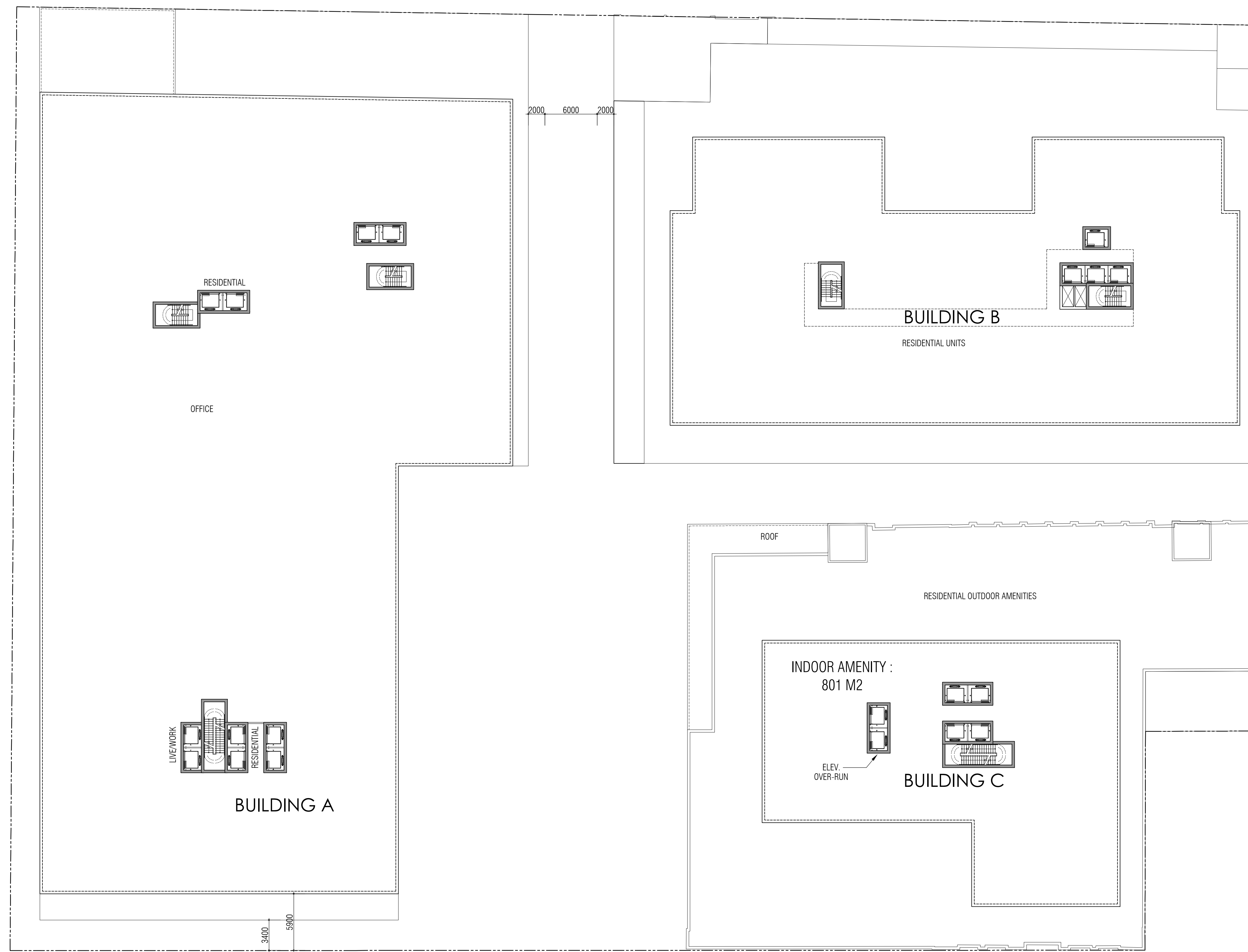
THIS DRAWING, AS AN INSTRUMENT OF SERVICE, IS PROVIDED BY AND IS THE PROPERTY OF GRAZIANI+CORAZZA ARCHITECTS INC. THE CONTRACTOR MUST VERIFY AND ACCEPT RESPONSIBILITY FOR ALL DIMENSIONS AND CONDITIONS ON SITE AND MUST NOTIFY GRAZIANI+CORAZZA ARCHITECTS INC. OF ANY VARIATIONS FROM THE SUPPLIED INFORMATION. GRAZIANI+CORAZZA ARCHITECTS INC. IS NOT RESPONSIBLE FOR THE ACCURACY OF SURVEY, STRUCTURAL, MECHANICAL, ELECTRICAL, AND OTHER ENGINEERING INFORMATION SHOWN ON THIS DRAWING. REFER TO THE APPROPRIATE ENGINEERING DRAWINGS BEFORE PROCEEDING WITH THE WORK. CONSTRUCTION MUST CONFORM TO ALL APPLICABLE CODES AND REQUIREMENTS OF THE AUTHORITIES HAVING JURISDICTION. UNLESS OTHERWISE NOTED, NO INVESTIGATION HAS BEEN UNDERTAKEN OR REPORTED ON BY THIS OFFICE IN REGARDS TO THE ENVIRONMENTAL CONDITION OF THIS SITE.

THIS DRAWING IS NOT TO BE SCALED. ALL ARCHITECTURAL SYMBOLS INDICATED ON THIS DRAWING ARE GRAPHIC REPRESENTATIONS ONLY.  
CONDITIONS FOR ELECTRONIC INFORMATION TRANSFER:

ELECTRONIC INFORMATION IS SUPPLIED TO THE OTHER ASSOCIATED FIRMS TO ASSIST THEM IN THE EXECUTION OF THEIR WORK/REVIEW. THE RECEIVING FIRMS MUST DETERMINE THE COMPLETENESS/APPROPRIATENESS/RELEVANCE OF THE INFORMATION IN RESPECT TO THEIR PARTICULAR RESPONSIBILITY.

GRAZIANI+CORAZZA ARCHITECTS INC. SHALL NOT BE RESPONSIBLE FOR:

1. ERRORS, OMISSIONS, INCOMPLETENESS DUE TO LOSS OF INFORMATION IN WHOLE OR PART WHEN INFORMATION IS TRANSFERRED.
2. TRANSMISSION OF ANY VIRUS OR DAMAGE TO THE RECEIVING ELECTRONIC SYSTEM WHEN INFORMATION IS TRANSFERRED.



ISSUED FOR REVISIONS

**GRAZIANI  
CORAZZA  
ARCHITECTS**

1320 SHAWANSON DRIVE, SUITE 100 MISSISSAUGA, ONTARIO L4W 1C3  
T.905.795.2844 F.905.795.2844 WWW.GC-ARCHITECTS.COM

RICHMOND RESIDENTIAL LIMITED PARTNERSHIP

**QUEEN AND SHERBOURNE**

245-285 QUEEN ST. E. 348-412 RICHMOND ST. E. 88-116 ONTARIO ST. 8-12 BRIGDEN PLACE  
TORONTO ONTARIO

PROJECT ARCHITECT:	B.G.
ASSISTANT DESIGNER:	R.L.
DRAWN BY:	D.L.
CHECKED BY:	D.B.
PLOT DATE:	MAR.12.2019
JOB #	1661.18

**5TH FLOOR  
FLOOR PLAN**

1:250 **A305**

THIS DRAWING, AS AN INSTRUMENT OF SERVICE, IS PROVIDED BY AND IS THE PROPERTY OF GRAZIANI+CORAZZA ARCHITECTS INC. THE CONTRACTOR MUST VERIFY AND ACCEPT RESPONSIBILITY FOR ALL DIMENSIONS AND CONDITIONS ON SITE AND MUST NOTIFY GRAZIANI+CORAZZA ARCHITECTS INC. OF ANY VARIATIONS FROM THE SUPPLIED INFORMATION. GRAZIANI+CORAZZA ARCHITECTS INC. IS NOT RESPONSIBLE FOR THE ACCURACY OF SURVEY, STRUCTURAL, MECHANICAL, ELECTRICAL, AND OTHER ENGINEERING INFORMATION SHOWN ON THIS DRAWING. REFER TO THE APPROPRIATE ENGINEERING DRAWINGS BEFORE PROCEEDING WITH THE WORK. CONSTRUCTION MUST CONFORM TO ALL APPLICABLE CODES AND REQUIREMENTS OF THE AUTHORITIES HAVING JURISDICTION. UNLESS OTHERWISE NOTED, NO INVESTIGATION HAS BEEN UNDERTAKEN OR REPORTED ON BY THIS OFFICE IN REGARDS TO THE ENVIRONMENTAL CONDITION OF THIS SITE.

THIS DRAWING IS NOT TO BE SCALED. ALL ARCHITECTURAL SYMBOLS INDICATED ON THIS DRAWING ARE GRAPHIC REPRESENTATIONS ONLY. THIS DRAWING IS NOT TO BE USED FOR ELECTRONIC INFORMATION TRANSFER.

ELECTRONIC INFORMATION IS SUPPLIED TO THE OTHER ASSOCIATED FIRMS TO ASSIST THEM IN THE EXECUTION OF THEIR WORK. REVIEW THE RECEIPT FIRMS MUST DETERMINE THE COMPLETENESS/APPROPRIATENESS/RELEVANCE OF THE INFORMATION IN RESPECT TO THEIR PARTICULAR RESPONSIBILITY.

GRAZIANI+CORAZZA ARCHITECTS INC. SHALL NOT BE RESPONSIBLE FOR:

1. ERRORS, OMISSIONS, INCOMPLETENESS DUE TO LOSS OF INFORMATION IN WHOLE OR PART WHEN INFORMATION IS TRANSFERRED.
2. TRANSMISSION OF ANY VIRUS OR DAMAGE TO THE RECEIVING ELECTRONIC SYSTEM WHEN INFORMATION IS TRANSFERRED.



ISSUED FOR REVISIONS

**GRAZIANI  
CORAZZA  
ARCHITECTS**

1020 SHAWANON DRIVE, SUITE 100 MISSISSAUGA, ONTARIO L4W 1C3  
T.905.795.2844 F.905.795.2844 WWW.GC-ARCHITECTS.COM

RICHMOND RESIDENTIAL LIMITED PARTNERSHIP

**QUEEN AND SHERBOURNE**

245-285 QUEEN ST E, 348-412 RICHMOND ST E, 88-116 ONTARIO ST, 8-12 BRIGDEN PLACE  
TORONTO ONTARIO

PROJECT ARCHITECT:	B.G.
ASSISTANT DESIGNER:	R.L.
DRAWN BY:	D.L.
CHECKED BY:	D.B.
PLOT DATE:	MAR.12.2019
JOB #	1661.18

**6TH FLOOR  
FLOOR PLAN**

1:250 **A306**

THIS DRAWING, AS AN INSTRUMENT OF SERVICE, IS PROVIDED BY AND IS THE PROPERTY OF GRAZIANI-CORAZZA ARCHITECTS INC. THE CONTRACTOR MUST VERIFY AND ACCEPT RESPONSIBILITY FOR ALL DIMENSIONS AND CONDITIONS ON SITE AND MUST NOTIFY GRAZIANI-CORAZZA ARCHITECTS INC. OF ANY VARIATIONS FROM THE SUPPLIED INFORMATION. GRAZIANI-CORAZZA ARCHITECTS INC. IS NOT RESPONSIBLE FOR THE ACCURACY OF SURVEY, STRUCTURAL, MECHANICAL, ELECTRICAL, AND OTHER ENGINEERING INFORMATION SHOWN ON THIS DRAWING. REFER TO THE APPROPRIATE ENGINEERING DRAWINGS BEFORE PROCEEDING WITH THE WORK. CONSTRUCTION MUST CONFORM TO ALL APPLICABLE CODES AND REQUIREMENTS OF THE AUTHORITIES HAVING JURISDICTION. UNLESS OTHERWISE NOTED, NO INVESTIGATION HAS BEEN UNDERTAKEN OR REPORTED ON BY THIS OFFICE IN REGARDS TO THE ENVIRONMENTAL CONDITION OF THIS SITE.

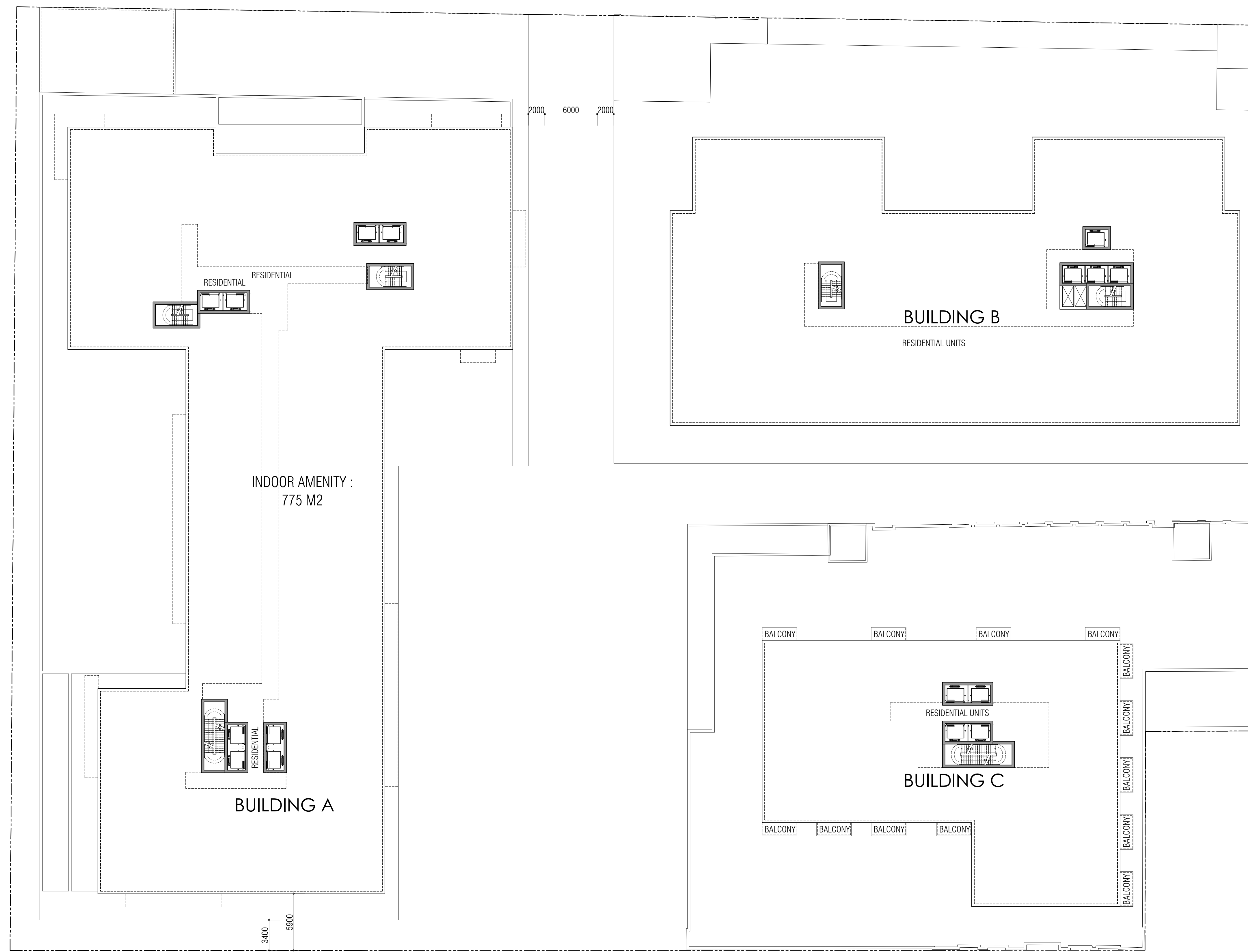
THIS DRAWING IS NOT TO BE SCALED. ALL ARCHITECTURAL SYMBOLS INDICATED ON THIS DRAWING ARE GRAPHIC REPRESENTATIONS ONLY.

CONDITIONS FOR ELECTRONIC INFORMATION TRANSFER:

ELECTRONIC INFORMATION IS SUPPLIED TO THE OTHER ASSOCIATED FIRMS TO ASSIST THEM IN THE EXECUTION OF THEIR WORK. REVIEW THE RECEIPT FIRMS MUST DETERMINE THE COMPLETENESS/APPROPRIATENESS/RELEVANCE OF THE INFORMATION IN RESPECT TO THEIR PARTICULAR RESPONSIBILITY.

GRAZIANI-CORAZZA ARCHITECTS INC. SHALL NOT BE RESPONSIBLE FOR:

1. ERRORS, OMISSIONS, INCOMPLETENESS DUE TO LOSS OF INFORMATION IN WHOLE OR PART WHEN INFORMATION IS TRANSFERRED.
2. TRANSMISSION OF ANY VIRUS OR DAMAGE TO THE RECEIVING ELECTRONIC SYSTEM WHEN INFORMATION IS TRANSFERRED.



ISSUED FOR REVISIONS

**GRAZIANI  
CORAZZA  
ARCHITECTS**

1020 SHAWANON DRIVE, SUITE 100 MISSISSAUGA, ONTARIO L4W 1C3  
 T. 905.795.2844 F. 905.795.2844 WWW.GC-ARCHITECTS.COM

RICHMOND RESIDENTIAL LIMITED PARTNERSHIP

**QUEEN AND SHERBOURNE**

245-285 QUEEN ST. E. 348-412 RICHMOND ST. E. 88-116 ONTARIO ST. 8-12 BRIGDEN PLACE  
 TORONTO ONTARIO

PROJECT ARCHITECT:	B.G.
ASSISTANT DESIGNER:	R.L.
DRAWN BY:	D.L.
CHECKED BY:	D.B.
PLOT DATE:	MAR.12.2019
JOB #	1661.18

**SEVENTH FLOOR  
FLOOR PLAN**

1:250 **A307**



THIS DRAWING, AS AN INSTRUMENT OF SERVICE, IS PROVIDED BY AND IS THE PROPERTY OF GRAZIANI-CORAZZA ARCHITECTS INC. THE CONTRACTOR MUST VERIFY AND ACCEPT RESPONSIBILITY FOR ALL DIMENSIONS AND CONDITIONS ON SITE AND MUST NOTIFY GRAZIANI-CORAZZA ARCHITECTS INC. OF ANY VARIATIONS FROM THE SUPPLIED INFORMATION. GRAZIANI-CORAZZA ARCHITECTS INC. IS NOT RESPONSIBLE FOR THE ACCURACY OF SURVEY, STRUCTURAL, MECHANICAL, ELECTRICAL, AND OTHER ENGINEERING INFORMATION SHOWN ON THIS DRAWING. REFER TO THE APPROPRIATE ENGINEERING DRAWINGS BEFORE PROCEEDING WITH THE WORK. CONSTRUCTION MUST CONFORM TO ALL APPLICABLE CODES AND REQUIREMENTS OF THE AUTHORITIES HAVING JURISDICTION. UNLESS OTHERWISE NOTED, NO INVESTIGATION HAS BEEN UNDERTAKEN OR REPORTED ON BY THIS OFFICE IN REGARDS TO THE ENVIRONMENTAL CONDITION OF THIS SITE.

THIS DRAWING IS NOT TO BE SCALED. ALL ARCHITECTURAL SYMBOLS INDICATED ON THIS DRAWING ARE GRAPHIC REPRESENTATIONS ONLY.  
CONDITIONS FOR ELECTRONIC INFORMATION TRANSFER:

ELECTRONIC INFORMATION IS SUPPLIED TO THE OTHER ASSOCIATED FIRMS TO ASSIST THEM IN THE EXECUTION OF THEIR WORK. REVIEW THE RECEIVING FIRMS MUST DETERMINE THE COMPLETENESS/APPROPRIATENESS/RELEVANCE OF THE INFORMATION IN RESPECT TO THEIR PARTICULAR RESPONSIBILITY.

GRAZIANI-CORAZZA ARCHITECTS INC. SHALL NOT BE RESPONSIBLE FOR:

1. ERRORS, OMISSIONS, INCOMPLETENESS DUE TO LOSS OF INFORMATION IN WHOLE OR PART WHEN INFORMATION IS TRANSFERRED.
2. TRANSMISSION OF ANY VIRUS OR DAMAGE TO THE RECEIVING ELECTRONIC SYSTEM WHEN INFORMATION IS TRANSFERRED.



ISSUED FOR REVISIONS

**GRAZIANI  
CORAZZA  
ARCHITECTS**

1020 SHAWANON DRIVE, SUITE 100 MISSISSAUGA, ONTARIO L4W 1C3  
T.905.795.2841 F.905.795.2844 WWW.GC-ARCHITECTS.COM

RICHMOND RESIDENTIAL LIMITED PARTNERSHIP

**QUEEN AND SHERBOURNE**

245-285 QUEEN ST E, 348-412 RICHMOND ST E, 88-116 ONTARIO ST, 8-12 BRIDGEN PLACE  
TORONTO ONTARIO

PROJECT ARCHITECT:	B.G.
ASSISTANT DESIGNER:	R.L.
DRAWN BY:	D.L.
CHECKED BY:	D.B.
PLOT DATE:	MAR.12.2019
JOB #	1661.18

**8TH - 12TH FLOOR  
FLOOR PLAN**

1:250 **A308**

THIS DRAWING, AS AN INSTRUMENT OF SERVICE, IS PROVIDED BY AND IS THE PROPERTY OF GRAZIANI+CORAZZA ARCHITECTS INC. THE CONTRACTOR MUST VERIFY AND ACCEPT RESPONSIBILITY FOR ALL DIMENSIONS AND CONDITIONS ON SITE AND MUST NOTIFY GRAZIANI+CORAZZA ARCHITECTS INC. OF ANY VARIATIONS FROM THE SUPPLIED INFORMATION. GRAZIANI+CORAZZA ARCHITECTS INC. IS NOT RESPONSIBLE FOR THE ACCURACY OF SURVEY, STRUCTURAL, MECHANICAL, ELECTRICAL, AND OTHER ENGINEERING INFORMATION SHOWN ON THIS DRAWING. REFER TO THE APPROPRIATE ENGINEERING DRAWINGS BEFORE PROCEEDING WITH THE WORK. CONSTRUCTION MUST CONFORM TO ALL APPLICABLE CODES AND REQUIREMENTS OF THE AUTHORITIES HAVING JURISDICTION. UNLESS OTHERWISE NOTED, NO INVESTIGATION HAS BEEN UNDERTAKEN OR REPORTED ON BY THIS OFFICE IN REGARDS TO THE ENVIRONMENTAL CONDITION OF THIS SITE.

THIS DRAWING IS NOT TO BE SCALED. ALL ARCHITECTURAL SYMBOLS INDICATED ON THIS DRAWING ARE GRAPHIC REPRESENTATIONS ONLY.  
CONDITIONS FOR ELECTRONIC INFORMATION TRANSFER:

ELECTRONIC INFORMATION IS SUPPLIED TO THE OTHER ASSOCIATED FIRMS TO ASSIST THEM IN THE EXECUTION OF THEIR WORK/REVIEW. THE RECEIVING FIRMS MUST DETERMINE THE COMPLETENESS/APPROPRIATENESS/RELEVANCE OF THE INFORMATION IN RESPECT TO THEIR PARTICULAR RESPONSIBILITY.

GRAZIANI+CORAZZA ARCHITECTS INC. SHALL NOT BE RESPONSIBLE FOR:

1. ERRORS, OMISSIONS, INCOMPLETENESS DUE TO LOSS OF INFORMATION IN WHOLE OR PART WHEN INFORMATION IS TRANSFERRED.
2. TRANSMISSION OF ANY VIRUS OR DAMAGE TO THE RECEIVING ELECTRONIC SYSTEM WHEN INFORMATION IS TRANSFERRED.



ISSUED FOR REVISIONS

**GRAZIANI  
CORAZZA  
ARCHITECTS**

1320 SHAWAN DR. SUITE 100 MISSISSAUGA, ONTARIO L4W 1C3  
T. 905.795.2844 F. 905.795.2844 WWW.GC-ARCHITECTS.COM

RICHMOND RESIDENTIAL LIMITED PARTNERSHIP

**QUEEN AND SHERBOURNE**

245-285 QUEEN ST E, 348-412 RICHMOND ST E, 88-116 ONTARIO ST, 8-12 BRIGDEN PLACE  
TORONTO ONTARIO

PROJECT ARCHITECT:	B.G.
ASSISTANT DESIGNER:	R.L.
DRAWN BY:	D.L.
CHECKED BY:	D.B.
PLOT DATE:	MAR.12.2019
JOB #	1661.18

**13TH FLOOR  
FLOOR PLAN**

1:250 **A309**

THIS DRAWING, AS AN INSTRUMENT OF SERVICE, IS PROVIDED BY AND IS THE PROPERTY OF GRAZIANI-CORAZZA ARCHITECTS INC. THE CONTRACTOR MUST VERIFY AND ACCEPT RESPONSIBILITY FOR ALL DIMENSIONS AND CONDITIONS ON SITE AND MUST NOTIFY GRAZIANI-CORAZZA ARCHITECTS INC. OF ANY VARIATIONS FROM THE SUPPLIED INFORMATION. GRAZIANI-CORAZZA ARCHITECTS INC. IS NOT RESPONSIBLE FOR THE ACCURACY OF SURVEY, STRUCTURAL, MECHANICAL, ELECTRICAL, AND OTHER ENGINEERING INFORMATION SHOWN ON THIS DRAWING. REFER TO THE APPROPRIATE ENGINEERING DRAWINGS BEFORE PROCEEDING WITH THE WORK. CONSTRUCTION MUST CONFORM TO ALL APPLICABLE CODES AND REQUIREMENTS OF THE AUTHORITIES HAVING JURISDICTION. UNLESS OTHERWISE NOTED, NO INVESTIGATION HAS BEEN UNDERTAKEN OR REPORTED ON BY THIS OFFICE IN REGARDS TO THE ENVIRONMENTAL CONDITION OF THIS SITE.

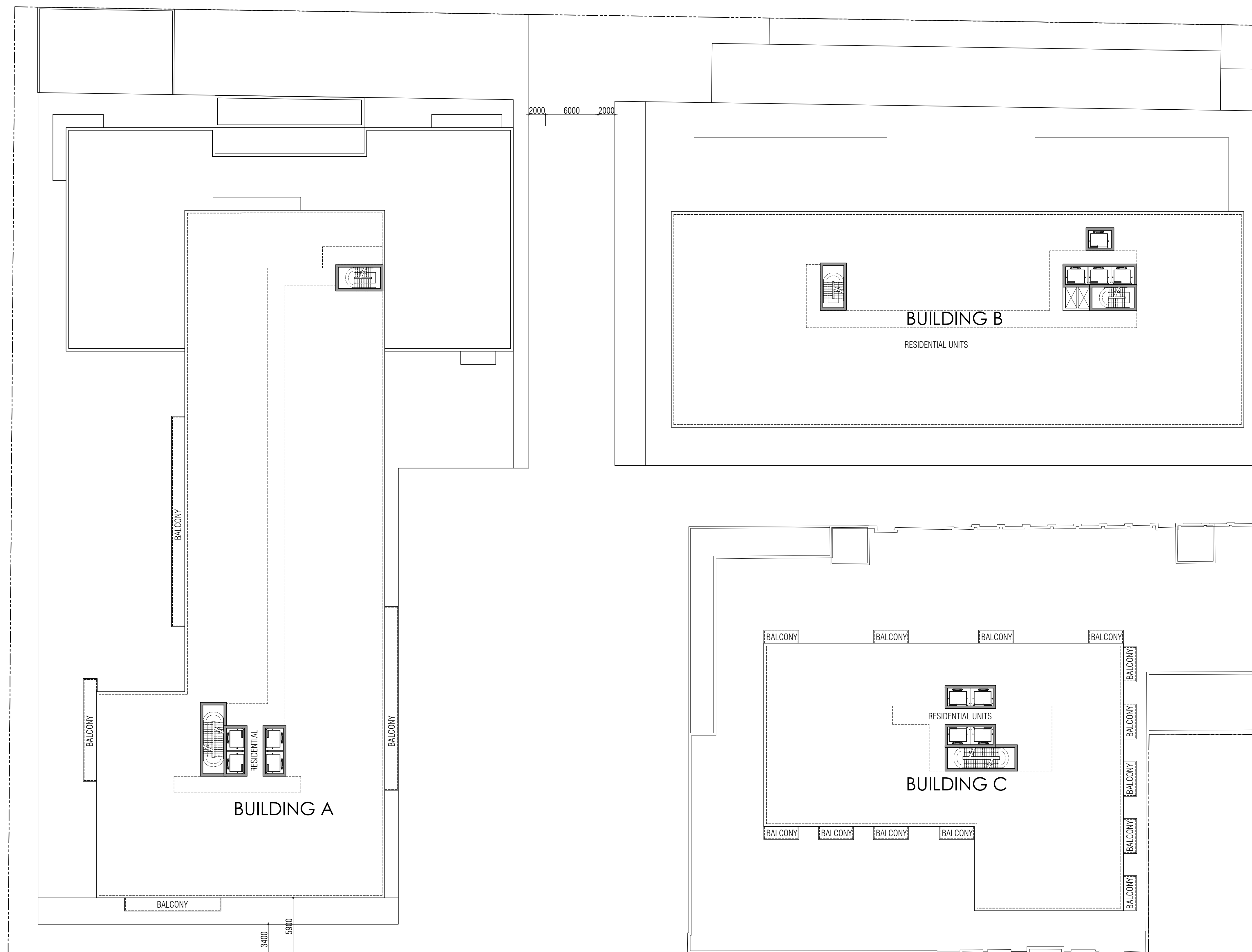
THIS DRAWING IS NOT TO BE SCALED. ALL ARCHITECTURAL SYMBOLS INDICATED ON THIS DRAWING ARE GRAPHIC REPRESENTATIONS ONLY.

CONDITIONS FOR ELECTRONIC INFORMATION TRANSFER:

ELECTRONIC INFORMATION IS SUPPLIED TO THE OTHER ASSOCIATED FIRMS TO ASSIST THEM IN THE EXECUTION OF THEIR WORK. REVIEW. THE RECEIVING FIRMS MUST DETERMINE THE COMPLETENESS/APPROPRIATENESS/RELEVANCE OF THE INFORMATION IN RESPECT TO THEIR PARTICULAR RESPONSIBILITY.

GRAZIANI-CORAZZA ARCHITECTS INC. SHALL NOT BE RESPONSIBLE FOR:

1. ERRORS, OMISSIONS, INCOMPLETENESS DUE TO LOSS OF INFORMATION IN WHOLE OR PART WHEN INFORMATION IS TRANSFERRED.
2. TRANSMISSION OF ANY VIRUS OR DAMAGE TO THE RECEIVING ELECTRONIC SYSTEM WHEN INFORMATION IS TRANSFERRED.



ISSUED FOR REVISIONS



**GRAZIANI  
CORAZZA  
ARCHITECTS**

1020 SHAWANON DRIVE, SUITE 100 MISSISSAUGA, ONTARIO L4W 1C3  
T. 905.795.2844 F. 905.795.2844 WWW.GC-ARCHITECTS.COM

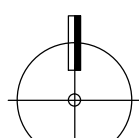
RICHMOND RESIDENTIAL LIMITED PARTNERSHIP

**QUEEN AND SHERBOURNE**

245-285 QUEEN ST E, 348-412 RICHMOND ST E, 88-116 ONTARIO ST, 8-12 BRIGDEN PLACE  
TORONTO ONTARIO

PROJECT ARCHITECT:	B.G.
ASSISTANT DESIGNER:	R.L.
DRAWN BY:	D.L.
CHECKED BY:	D.B.
PLOT DATE:	MAR.12.2019
JOB #	1661.18

**14TH - 18TH FLOOR  
FLOOR PLAN**



1:250 **A310**

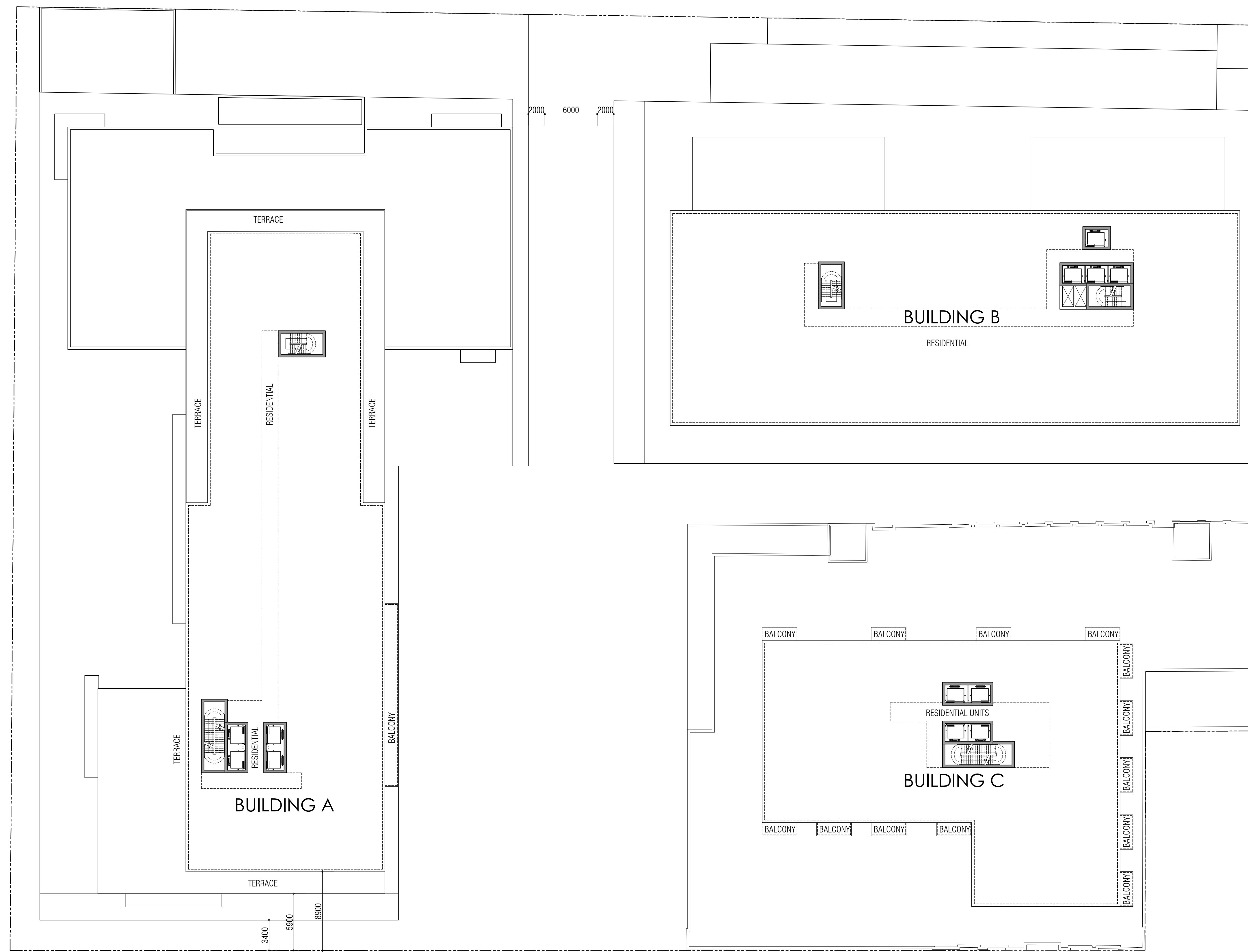
THIS DRAWING, AS AN INSTRUMENT OF SERVICE, IS PROVIDED BY AND IS THE PROPERTY OF GRAZIANI+CORAZZA ARCHITECTS INC. THE CONTRACTOR MUST VERIFY AND ACCEPT RESPONSIBILITY FOR ALL DIMENSIONS AND CONDITIONS ON SITE AND MUST NOTIFY GRAZIANI+CORAZZA ARCHITECTS INC. OF ANY VARIATIONS FROM THE SUPPLIED INFORMATION. GRAZIANI+CORAZZA ARCHITECTS INC. IS NOT RESPONSIBLE FOR THE ACCURACY OF SURVEY, STRUCTURAL, MECHANICAL, ELECTRICAL, AND OTHER ENGINEERING INFORMATION SHOWN ON THIS DRAWING. REFER TO THE APPROPRIATE ENGINEERING DRAWINGS BEFORE PROCEEDING WITH THE WORK. CONSTRUCTION MUST CONFORM TO ALL APPLICABLE CODES AND REQUIREMENTS OF THE AUTHORITIES HAVING JURISDICTION. UNLESS OTHERWISE NOTED, NO INVESTIGATION HAS BEEN UNDERTAKEN OR REPORTED ON BY THIS OFFICE IN REGARDS TO THE ENVIRONMENTAL CONDITION OF THIS SITE.

THIS DRAWING IS NOT TO BE SCALED. ALL ARCHITECTURAL SYMBOLS INDICATED ON THIS DRAWING ARE GRAPHIC REPRESENTATIONS ONLY.

CONDITIONS FOR ELECTRONIC INFORMATION TRANSFER:

ELECTRONIC INFORMATION IS SUPPLIED TO THE OTHER ASSOCIATED FIRMS TO ASSIST THEM IN THE EXECUTION OF THEIR WORK. REVIEW. THE RECEIVING FIRMS MUST DETERMINE THE COMPLETENESS / APPROPRIATENESS / RELEVANCE OF THE INFORMATION IN RESPECT TO THEIR PARTICULAR RESPONSIBILITY.

- GRAZIANI+CORAZZA ARCHITECTS INC. SHALL NOT BE RESPONSIBLE FOR:
1. ERRORS, OMISSIONS, INCOMPLETENESS DUE TO LOSS OF INFORMATION IN WHOLE OR PART WHEN INFORMATION IS TRANSFERRED.
  2. TRANSMISSION OF ANY VIRUS OR DAMAGE TO THE RECEIVING ELECTRONIC SYSTEM WHEN INFORMATION IS TRANSFERRED.



ISSUED FOR REVISIONS

**GRAZIANI  
CORAZZA  
ARCHITECTS**

1320 SHAWANON DRIVE, SUITE 100 MISSISSAUGA, ONTARIO L4W 1C3  
T. 905.795.2844 F. 905.795.2844 WWW.GC-ARCHITECTS.COM

RICHMOND RESIDENTIAL LIMITED PARTNERSHIP

**QUEEN AND SHERBOURNE**

245-285 QUEEN ST. E. 348-412 RICHMOND ST. E. 88-116 ONTARIO ST. 8-12 BRIGDEN PLACE  
TORONTO ONTARIO

PROJECT ARCHITECT:	B.G.
ASSISTANT DESIGNER:	R.L.
DRAWN BY:	D.L.
CHECKED BY:	D.B.
PLOT DATE:	MAR.12.2019
JOB #	1661.18

**19TH FLOOR  
FLOOR PLAN**

1:250 **A311**

THIS DRAWING, AS AN INSTRUMENT OF SERVICE, IS PROVIDED BY AND IS THE PROPERTY OF GRAZIANI-CORAZZA ARCHITECTS INC. THE CONTRACTOR MUST VERIFY AND ACCEPT RESPONSIBILITY FOR ALL DIMENSIONS AND CONDITIONS ON SITE AND MUST NOTIFY GRAZIANI-CORAZZA ARCHITECTS INC. OF ANY VARIATIONS FROM THE SUPPLIED INFORMATION. GRAZIANI-CORAZZA ARCHITECTS INC. IS NOT RESPONSIBLE FOR THE ACCURACY OF SURVEY, STRUCTURAL, MECHANICAL, ELECTRICAL, AND OTHER ENGINEERING INFORMATION SHOWN ON THIS DRAWING. REFER TO THE APPROPRIATE ENGINEERING DRAWINGS BEFORE PROCEEDING WITH THE WORK. CONSTRUCTION MUST CONFORM TO ALL APPLICABLE CODES AND REQUIREMENTS OF THE AUTHORITIES HAVING JURISDICTION. UNLESS OTHERWISE NOTED, NO INVESTIGATION HAS BEEN UNDERTAKEN OR REPORTED ON BY THIS OFFICE IN REGARDS TO THE ENVIRONMENTAL CONDITION OF THIS SITE.

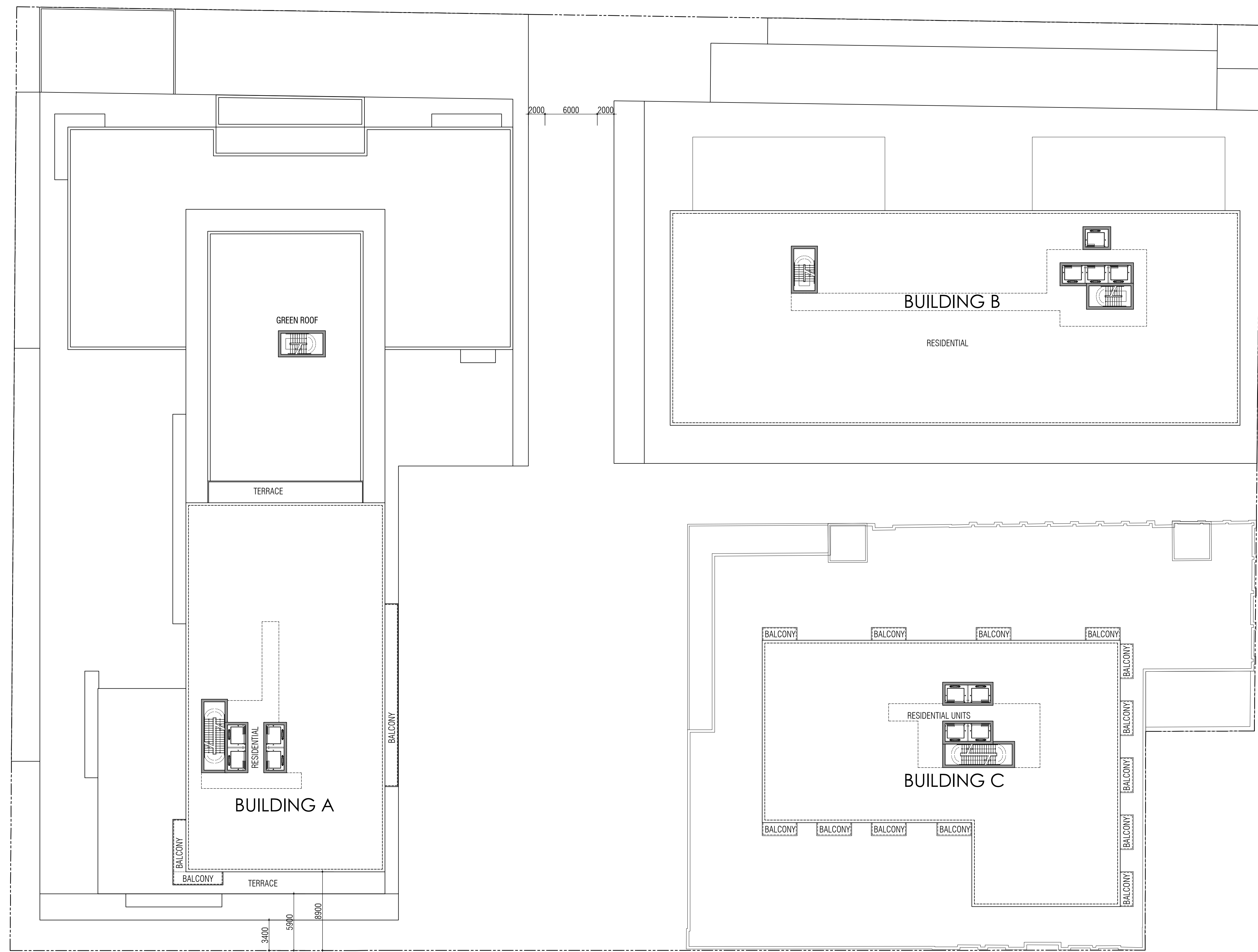
THIS DRAWING IS NOT TO BE SCALED. ALL ARCHITECTURAL SYMBOLS INDICATED ON THIS DRAWING ARE GRAPHIC REPRESENTATIONS ONLY.

CONDITIONS FOR ELECTRONIC INFORMATION TRANSFER:

ELECTRONIC INFORMATION IS SUPPLIED TO THE OTHER ASSOCIATED FIRMS TO ASSIST THEM IN THE EXECUTION OF THEIR WORK. REVIEW THE RECEIPT FIRMS MUST DETERMINE THE COMPLETENESS/APPROPRIATENESS/RELEVANCE OF THE INFORMATION IN RESPECT TO THEIR PARTICULAR RESPONSIBILITY.

GRAZIANI-CORAZZA ARCHITECTS INC. SHALL NOT BE RESPONSIBLE FOR:

1. ERRORS, OMISSIONS, INCOMPLETENESS DUE TO LOSS OF INFORMATION IN WHOLE OR PART WHEN INFORMATION IS TRANSFERRED.
2. TRANSMISSION OF ANY VIRUS OR DAMAGE TO THE RECEIVING ELECTRONIC SYSTEM WHEN INFORMATION IS TRANSFERRED.



ISSUED FOR REVISIONS

**GRAZIANI  
CORAZZA  
ARCHITECTS**

1320 SHAWAN DR. SUITE 100 MISSISSAUGA, ONTARIO L4W 1C3  
T. 905.795.2844 F. 905.795.2844 WWW.GC-ARCHITECTS.COM

RICHMOND RESIDENTIAL LIMITED PARTNERSHIP

**QUEEN AND SHERBOURNE**

245-285 QUEEN ST. E. 348-412 RICHMOND ST. E. 88-116 ONTARIO ST. 8-12 BRIGDEN PLACE  
TORONTO ONTARIO

PROJECT ARCHITECT:	B.G.
ASSISTANT DESIGNER:	R.L.
DRAWN BY:	D.L.
CHECKED BY:	D.B.
PLOT DATE:	MAR.12.2019
JOB #	1661.18

**20TH FLOOR  
FLOOR PLAN**

1:250 **A312**

THIS DRAWING, AS AN INSTRUMENT OF SERVICE, IS PROVIDED BY AND IS THE PROPERTY OF GRAZIANI+CORAZZA ARCHITECTS INC. THE CONTRACTOR MUST VERIFY AND ACCEPT RESPONSIBILITY FOR ALL DIMENSIONS AND CONDITIONS ON SITE AND MUST NOTIFY GRAZIANI+CORAZZA ARCHITECTS INC. OF ANY VARIATIONS FROM THE SUPPLIED INFORMATION. GRAZIANI+CORAZZA ARCHITECTS INC. IS NOT RESPONSIBLE FOR THE ACCURACY OF SURVEY, STRUCTURAL, MECHANICAL, ELECTRICAL, AND OTHER ENGINEERING INFORMATION SHOWN ON THIS DRAWING. REFER TO THE APPROPRIATE ENGINEERING DRAWINGS BEFORE PROCEEDING WITH THE WORK. CONSTRUCTION MUST CONFORM TO ALL APPLICABLE CODES AND REQUIREMENTS OF THE AUTHORITIES HAVING JURISDICTION. UNLESS OTHERWISE NOTED, NO INVESTIGATION HAS BEEN UNDERTAKEN OR REPORTED ON BY THIS OFFICE IN REGARDS TO THE ENVIRONMENTAL CONDITION OF THIS SITE.

THIS DRAWING IS NOT TO BE SCALED. ALL ARCHITECTURAL SYMBOLS INDICATED ON THIS DRAWING ARE GRAPHIC REPRESENTATIONS ONLY.  
CONDITIONS FOR ELECTRONIC INFORMATION TRANSFER:

ELECTRONIC INFORMATION IS SUPPLIED TO THE OTHER ASSOCIATED FIRMS TO ASSIST THEM IN THE EXECUTION OF THEIR WORK. REVIEW THE RECEIVING FIRMS MUST DETERMINE THE COMPLETENESS/APPROPRIATENESS/RELEVANCE OF THE INFORMATION IN RESPECT TO THEIR PARTICULAR RESPONSIBILITY.

GRAZIANI+CORAZZA ARCHITECTS INC. SHALL NOT BE RESPONSIBLE FOR:  
 1. ERRORS, OMISSIONS, INCOMPLETENESS DUE TO LOSS OF INFORMATION IN WHOLE OR PART WHEN INFORMATION IS TRANSFERRED.  
 2. TRANSMISSION OF ANY VIRUS OR DAMAGE TO THE RECEIVING ELECTRONIC SYSTEM WHEN INFORMATION IS TRANSFERRED.



ISSUED FOR REVISIONS

**GRAZIANI  
CORAZZA  
ARCHITECTS**

1320 SHAWANON DRIVE, SUITE 100 MISSISSAUGA, ONTARIO L4W 1C3  
 T.905.795.2844 F.905.795.2844 WWW.GC-ARCHITECTS.COM

RICHMOND RESIDENTIAL LIMITED PARTNERSHIP

**QUEEN AND SHERBOURNE**

245-285 QUEEN ST. E. 348-412 RICHMOND ST. E. 88-116 ONTARIO ST. 8-12 BRIGDEN PLACE  
 TORONTO ONTARIO

PROJECT ARCHITECT:	B.G.
ASSISTANT DESIGNER:	R.L.
DRAWN BY:	D.L.
CHECKED BY:	D.B.
PLOT DATE:	MAR.12.2019
JOB #	1661.18

**21ST - 24TH FLOOR  
FLOOR PLAN**

1:250 **A313**

THIS DRAWING, AS AN INSTRUMENT OF SERVICE, IS PROVIDED BY AND IS THE PROPERTY OF GRAZIANI+CORAZZA ARCHITECTS INC. THE CONTRACTOR MUST VERIFY AND ACCEPT RESPONSIBILITY FOR ALL DIMENSIONS AND CONDITIONS ON SITE AND MUST NOTIFY GRAZIANI+CORAZZA ARCHITECTS INC. OF ANY VARIATIONS FROM THE SUPPLIED INFORMATION. GRAZIANI+CORAZZA ARCHITECTS INC. IS NOT RESPONSIBLE FOR THE ACCURACY OF SURVEY, STRUCTURAL, MECHANICAL, ELECTRICAL, AND OTHER ENGINEERING INFORMATION SHOWN ON THIS DRAWING. REFER TO THE APPROPRIATE ENGINEERING DRAWINGS BEFORE PROCEEDING WITH THE WORK. CONSTRUCTION MUST CONFORM TO ALL APPLICABLE CODES AND REQUIREMENTS OF THE AUTHORITIES HAVING JURISDICTION. UNLESS OTHERWISE NOTED, NO INVESTIGATION HAS BEEN UNDERTAKEN OR REPORTED ON BY THIS OFFICE IN REGARDS TO THE ENVIRONMENTAL CONDITION OF THIS SITE.

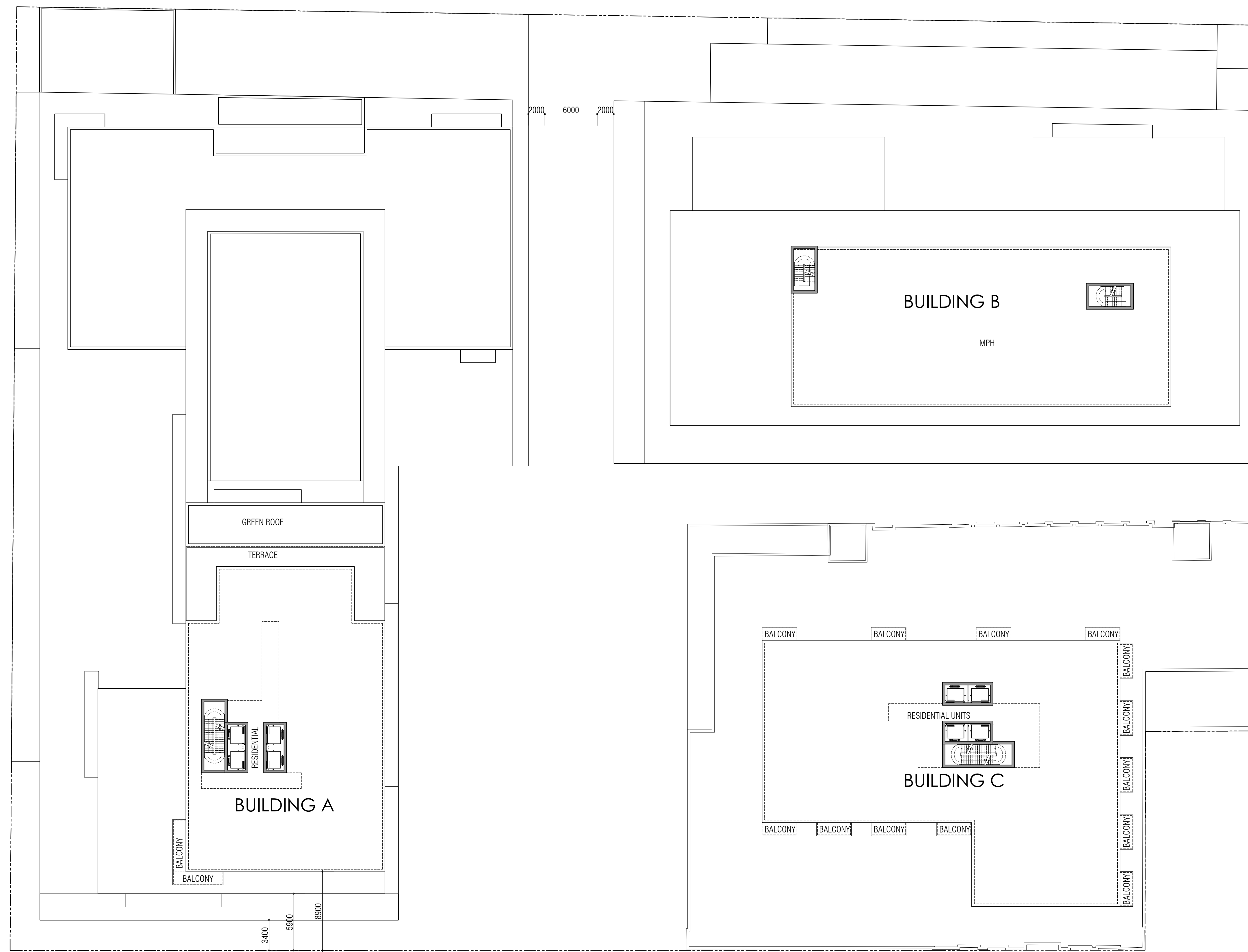
THIS DRAWING IS NOT TO BE SCALED. ALL ARCHITECTURAL SYMBOLS INDICATED ON THIS DRAWING ARE GRAPHIC REPRESENTATIONS ONLY.

CONDITIONS FOR ELECTRONIC INFORMATION TRANSFER:

ELECTRONIC INFORMATION IS SUPPLIED TO THE OTHER ASSOCIATED FIRMS TO ASSIST THEM IN THE EXECUTION OF THEIR WORK. REVIEW THE RECEIPT FIRMS MUST DETERMINE THE COMPLETENESS/APPROPRIATENESS/RELEVANCE OF THE INFORMATION IN RESPECT TO THEIR PARTICULAR RESPONSIBILITY.

GRAZIANI+CORAZZA ARCHITECTS INC. SHALL NOT BE RESPONSIBLE FOR:

1. ERRORS, OMISSIONS, INCOMPLETENESS DUE TO LOSS OF INFORMATION IN WHOLE OR PART WHEN INFORMATION IS TRANSFERRED.
2. TRANSMISSION OF ANY VIRUS OR DAMAGE TO THE RECEIVING ELECTRONIC SYSTEM WHEN INFORMATION IS TRANSFERRED.



ISSUED FOR REVISIONS

**GRAZIANI  
CORAZZA  
ARCHITECTS**

1320 SHAWANON DRIVE, SUITE 100 MISSISSAUGA, ONTARIO L4W 1C3  
T.905.795.2844 F.905.795.2844 WWW.GC-ARCHITECTS.COM

RICHMOND RESIDENTIAL LIMITED PARTNERSHIP

**QUEEN AND SHERBOURNE**

245-285 QUEEN ST. E. 348-412 RICHMOND ST. E. 88-116 ONTARIO ST. 8-12 BRIGDEN PLACE  
TORONTO ONTARIO

PROJECT ARCHITECT:	B.G.
ASSISTANT DESIGNER:	R.L.
DRAWN BY:	D.L.
CHECKED BY:	D.B.
PLOT DATE:	MAR.12.2019
JOB #	1661.18

**TYPICAL FLOOR  
FLOOR PLAN**

1:250 **A314**

THIS DRAWING, AS AN INSTRUMENT OF SERVICE, IS PROVIDED BY AND IS THE PROPERTY OF GRAZIANI-CORAZZA ARCHITECTS INC. THE CONTRACTOR MUST VERIFY AND ACCEPT RESPONSIBILITY FOR ALL DIMENSIONS AND CONDITIONS ON SITE AND MUST NOTIFY GRAZIANI-CORAZZA ARCHITECTS INC. OF ANY VARIATIONS FROM THE SUPPLIED INFORMATION. GRAZIANI-CORAZZA ARCHITECTS INC. IS NOT RESPONSIBLE FOR THE ACCURACY OF SURVEY, STRUCTURAL, MECHANICAL, ELECTRICAL, AND OTHER ENGINEERING INFORMATION SHOWN ON THIS DRAWING. REFER TO THE APPROPRIATE ENGINEERING DRAWINGS BEFORE PROCEEDING WITH THE WORK. CONSTRUCTION MUST CONFORM TO ALL APPLICABLE CODES AND REQUIREMENTS OF THE AUTHORITIES HAVING JURISDICTION. UNLESS OTHERWISE NOTED, NO INVESTIGATION HAS BEEN UNDERTAKEN OR REPORTED ON BY THIS OFFICE IN REGARDS TO THE ENVIRONMENTAL CONDITION OF THIS SITE.

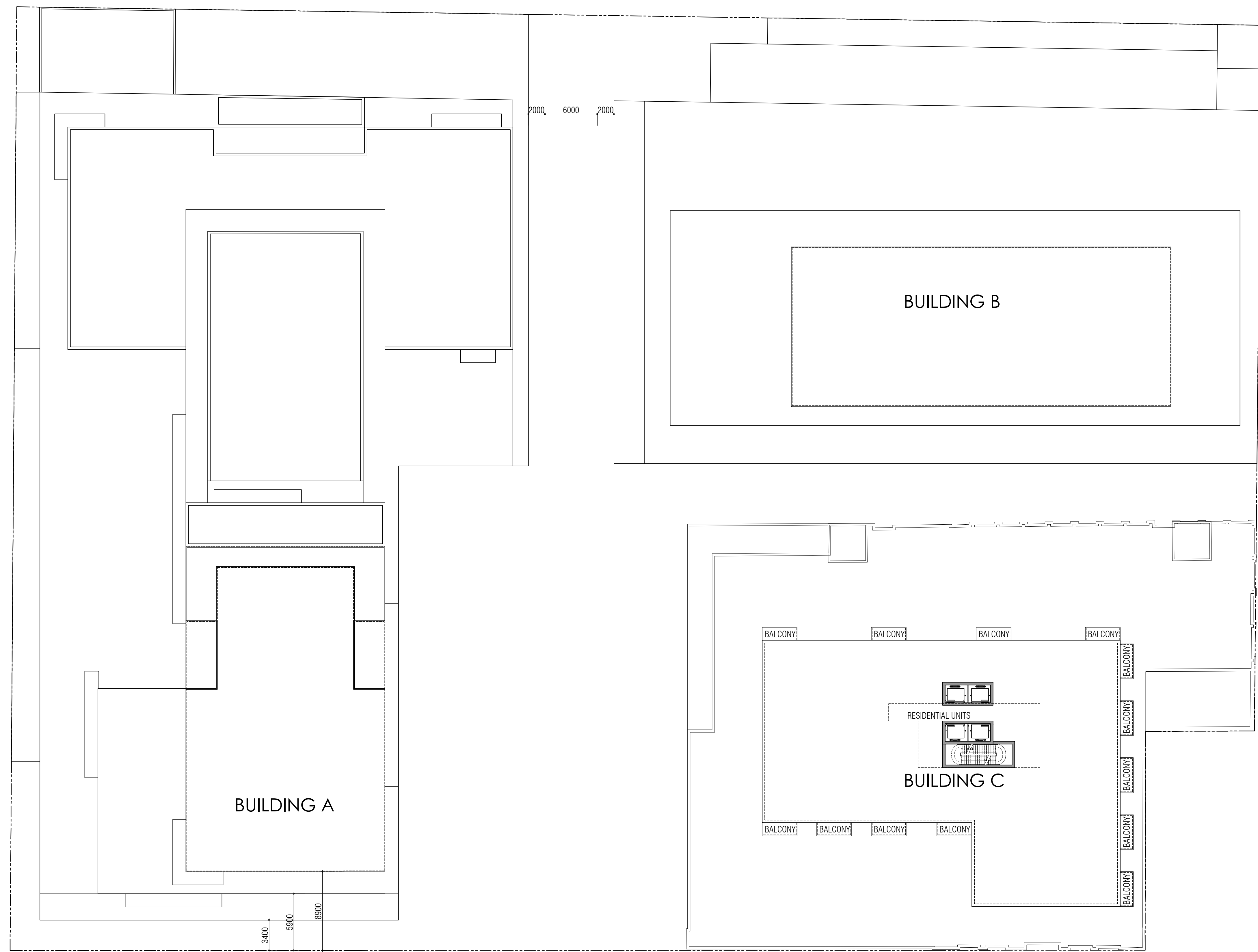
THIS DRAWING IS NOT TO BE SCALED. ALL ARCHITECTURAL SYMBOLS INDICATED ON THIS DRAWING ARE GRAPHIC REPRESENTATIONS ONLY.

CONDITIONS FOR ELECTRONIC INFORMATION TRANSFER:

ELECTRONIC INFORMATION IS SUPPLIED TO THE OTHER ASSOCIATED FIRMS TO ASSIST THEM IN THE EXECUTION OF THEIR WORK. REVIEW THE RECEIPT FIRMS MUST DETERMINE THE COMPLETENESS/APPROPRIATENESS/RELEVANCE OF THE INFORMATION IN RESPECT TO THEIR PARTICULAR RESPONSIBILITY.

GRAZIANI-CORAZZA ARCHITECTS INC. SHALL NOT BE RESPONSIBLE FOR:

1. ERRORS, OMISSIONS, INCOMPLETENESS DUE TO LOSS OF INFORMATION IN WHOLE OR PART WHEN INFORMATION IS TRANSFERRED.
2. TRANSMISSION OF ANY VIRUS OR DAMAGE TO THE RECEIVING ELECTRONIC SYSTEM WHEN INFORMATION IS TRANSFERRED.



ISSUED FOR REVISIONS

**GRAZIANI  
CORAZZA  
ARCHITECTS**

1020 SHAWANON DRIVE, SUITE 100 MISSISSAUGA, ONTARIO L4W 1C3  
T.905.795.2844 F.905.795.2844 WWW.GC-ARCHITECTS.COM

RICHMOND RESIDENTIAL LIMITED PARTNERSHIP

**QUEEN AND SHERBOURNE**

245-285 QUEEN ST E, 348-412 RICHMOND ST E, 88-116 ONTARIO ST, 8-12 BRIGDEN PLACE  
TORONTO ONTARIO

PROJECT ARCHITECT: B.G.  
ASSISTANT DESIGNER: R.L.  
DRAWN BY: D.L.  
CHECKED BY: D.B.  
PLOT DATE: MAR.12.2019  
JOB #: 1661.18

**32ND - 33RD FLOOR  
FLOOR PLAN**

1:250 **A315**