

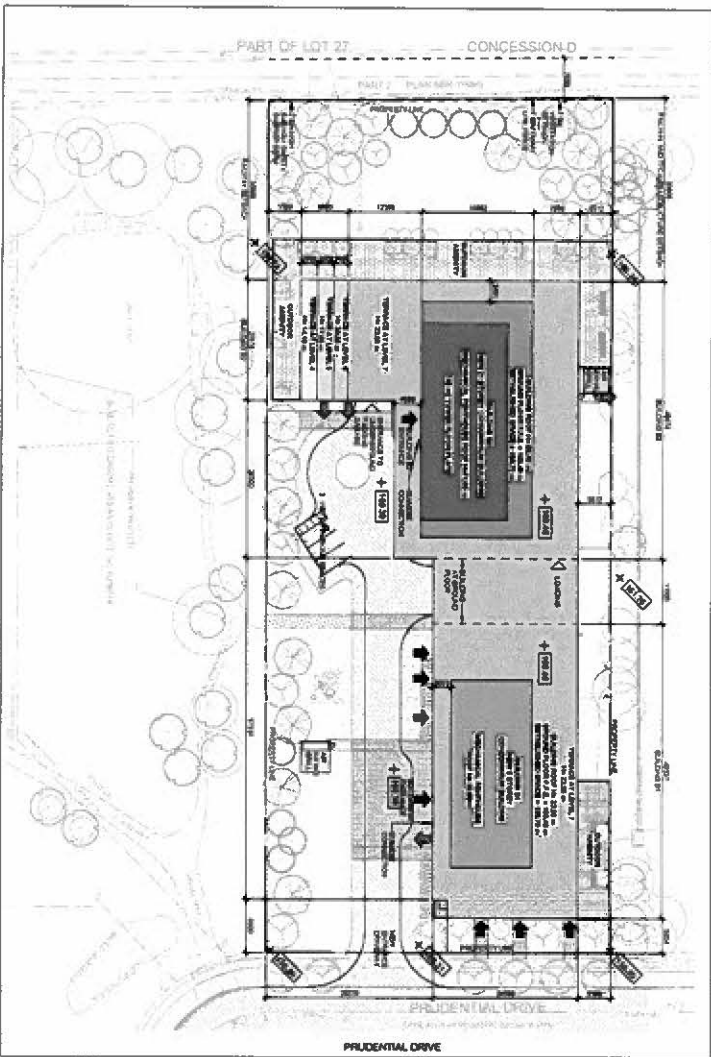
Green Roof Statistics
SCALE: 1:1

GREEN ROOF STATISTICS	REQUIREMENTS
PERCENTAGE OF GREEN ROOF	25%
MINIMUM GREEN ROOF AREA	1,000 sq. ft.
MINIMUM GREEN ROOF DEPTH	6"
MINIMUM GREEN ROOF WEIGHT	150 lbs/sq. ft.
MINIMUM GREEN ROOF DRAINAGE	1"
MINIMUM GREEN ROOF RETENTION	120 days
MINIMUM GREEN ROOF IRRIGATION	1.5"
MINIMUM GREEN ROOF MAINTENANCE	120 days

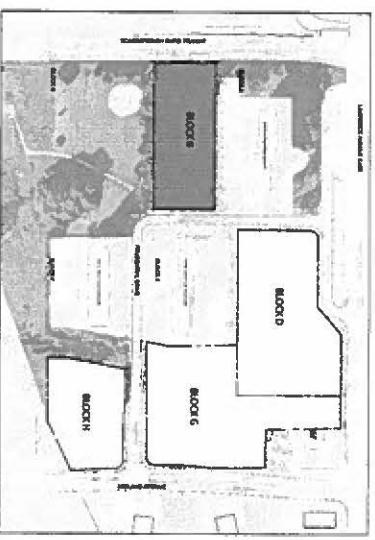
Toronto Green Standard
SCALE: 1:1

GREEN ROOF STATISTICS	REQUIREMENTS
PERCENTAGE OF GREEN ROOF	25%
MINIMUM GREEN ROOF AREA	1,000 sq. ft.
MINIMUM GREEN ROOF DEPTH	6"
MINIMUM GREEN ROOF WEIGHT	150 lbs/sq. ft.
MINIMUM GREEN ROOF DRAINAGE	1"
MINIMUM GREEN ROOF RETENTION	120 days
MINIMUM GREEN ROOF IRRIGATION	1.5"
MINIMUM GREEN ROOF MAINTENANCE	120 days

Site Plan
SCALE: 1/800



Site Map
SCALE: 1/800



PROFESSIONAL ENGINEER'S CERTIFICATE

I, **J. D. BARNES**, P. Eng., being duly sworn, depose and say that the above is a true and correct copy of the drawings and specifications for the project described herein, and that I am a duly licensed Professional Engineer in the Province of Ontario.

PROFESSIONAL ENGINEER'S CERTIFICATE

I, **J. D. BARNES**, P. Eng., being duly sworn, depose and say that the above is a true and correct copy of the drawings and specifications for the project described herein, and that I am a duly licensed Professional Engineer in the Province of Ontario.

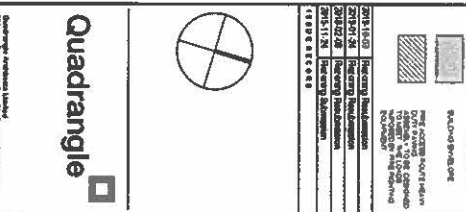
Quadrangle

Lawrence & Midland Block B
Toronto, ON
for
Asensio Investments Limited

14034 Ashbridgek SCC
SCC
SCC

Block B - Site Plan

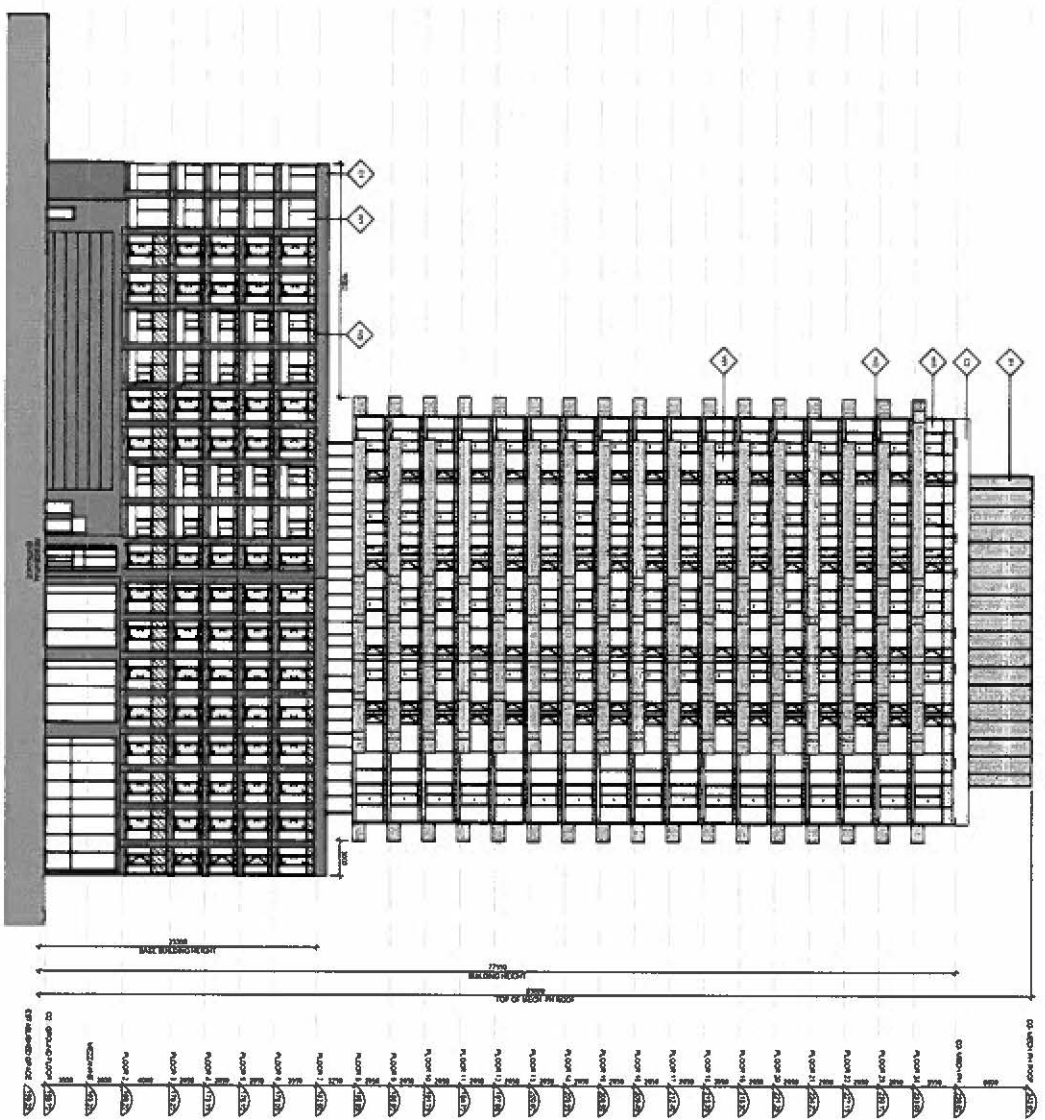
B-101.S



SITE PLAN LEGEND

Legend symbols and descriptions:

- Building Footprint
- Parking
- Landscaping
- Other site features



- MATERIAL LEGEND**
- ◆ FINISH OF CONCRETE COL. GRP 1
 - ◆ FINISH OF CONCRETE COL. GRP 2
 - ◆ ALUMINUM CLADDING SYSTEM - COLOR 1
 - ◆ ALUM. FINISH CLADDING
 - ◆ VINYL SYSTEM - WHITE BLADE
 - ◆ FINISH OF STAIR - ALUM. FINISH CLADDING
 - ◆ FINISH OF STAIR - VINYL FINISH CLADDING
 - ◆ VINYL CLADDING

2015-10-02	Revised: Additions
2015-07-26	Revised: Additions
2015-02-02	Revised: Additions
2015-11-24	Revised: Additions
1998-08-08	Revised: Additions

Quadrangle

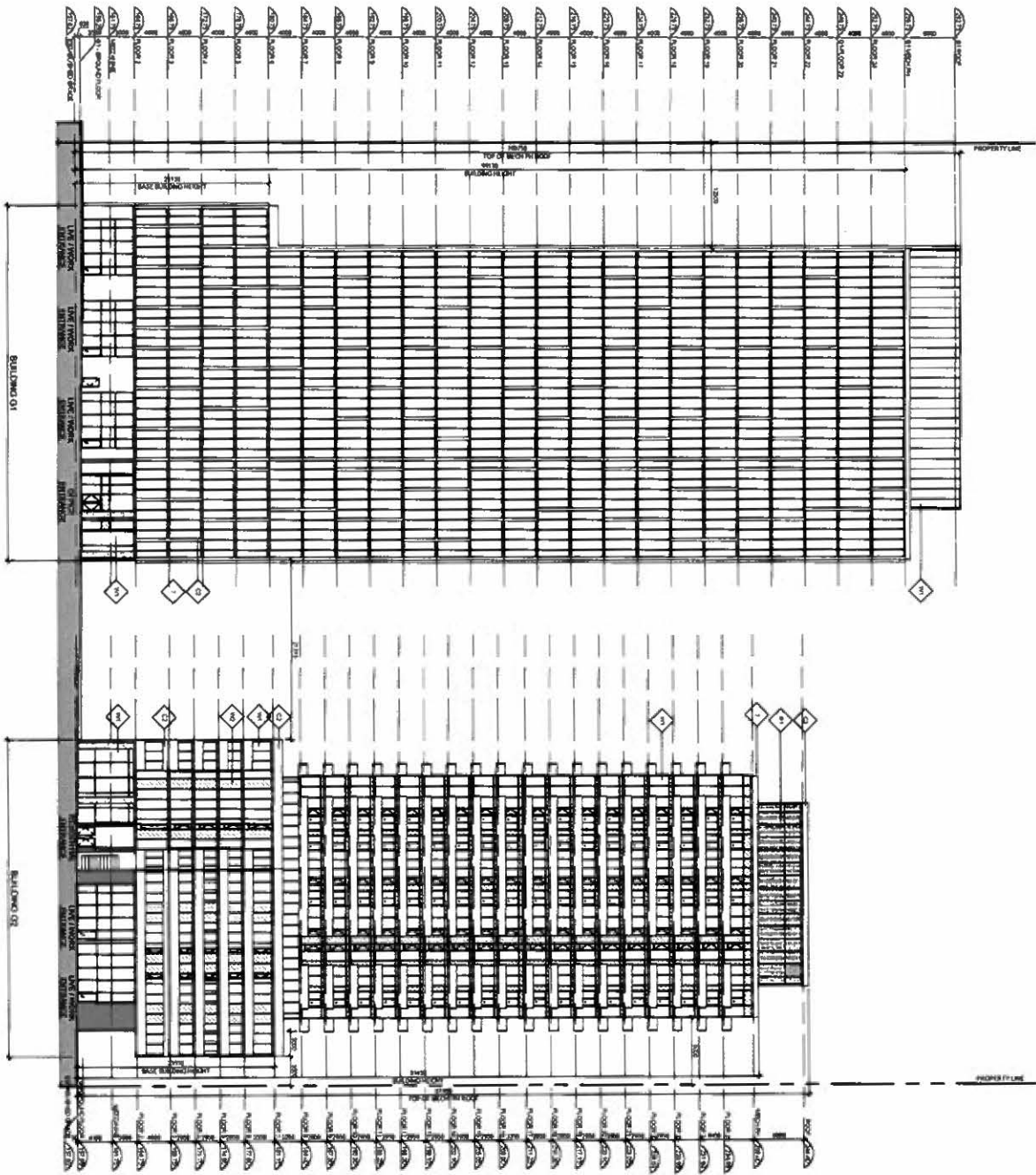
Quadrangle Building Limited
 10175 Yonge Street, Suite 201, York Mills, Ontario M3J 1P4
 416-491-2000 Fax: 416-491-2001
 www.quadrangle.ca

Levermore & Midland Block O
 TORONTO, ON
 for
 Ascendos Investments Limited

14034 1280 SP SSC
 MARKET PLACE
 Block O - Building 02 East
 Elevation

D-403.S

Not to be used for any other project without the written consent of the architect. The architect is not responsible for the accuracy of the information provided in this document. The architect is not responsible for the accuracy of the information provided in this document. The architect is not responsible for the accuracy of the information provided in this document.



- MATERIAL LEGEND:**
- ◊ REINFORCED CONCRETE COL. 1
 - ◊ REINFORCED CONCRETE COL. 2
 - ◊ ALUM. CLADDING SYSTEM - COL. 1
 - ◊ ALUM. CLADDING SYSTEM - COL. 2
 - ◊ WOODEN PARTITION - 1200x2400
 - ◊ WOODEN PARTITION - 1200x2400
 - ◊ WOODEN PARTITION - 1200x2400
 - ◊ WOODEN PARTITION - 1200x2400
 - ◊ WOODEN PARTITION - 1200x2400

2014-10-10 Project: Renovation
 2014-10-10 Drawn: [Name]
 2014-10-10 Checked: [Name]
 2014-10-10 Issued: [Name]

Quadrangle

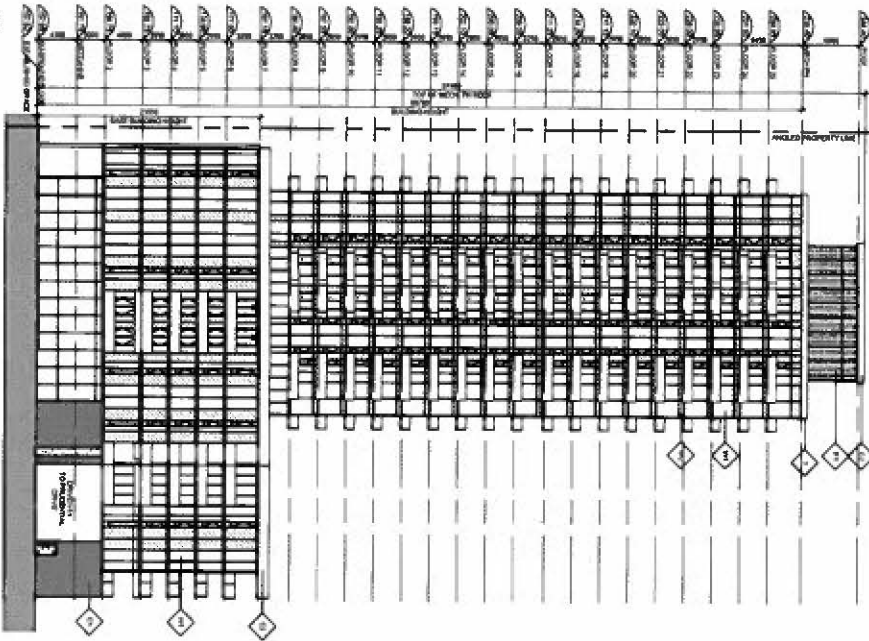
Quadrangle Building Limited
 11100 Yonge Street, Suite 100
 Toronto, ON M2N 6L9
 Telephone: (416) 491-1111
 Fax: (416) 491-1112
 Email: info@quadrangle.ca

Laneway & Midland Stock G
 TORONTO, ON
 for
 Asando Investments Limited
 1404 1280 LA SGC
 TORONTO, ON M5S 1A5
 Sport G - West Elevation

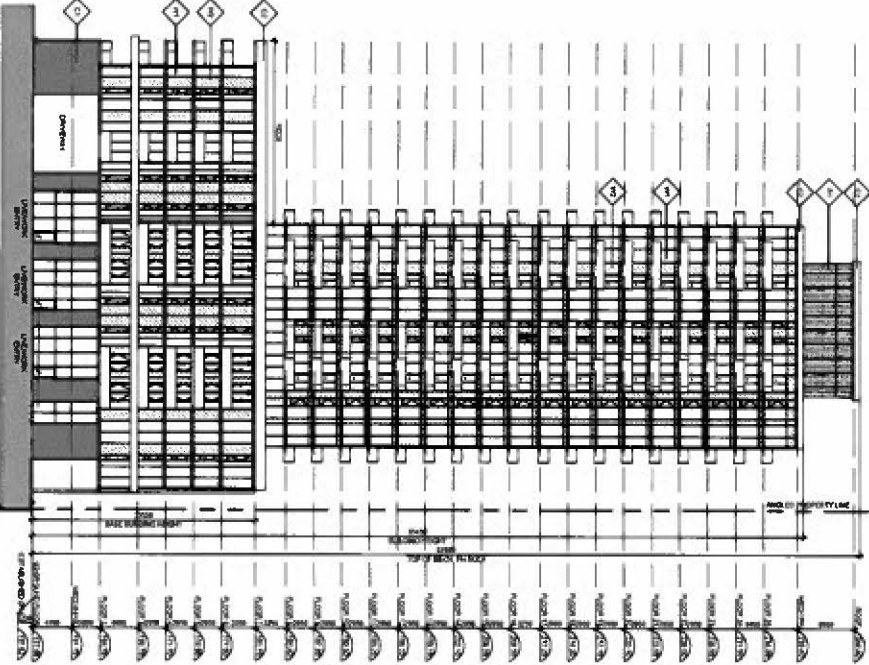
G-402.S

This drawing is the property of Quadrangle Building Limited. It is to be used only for the project and site identified herein. No part of this drawing may be reproduced, stored in a retrieval system, or transmitted in any form or by any means, electronic, mechanical, photocopying, recording, or by any information storage and retrieval system, without the prior written permission of Quadrangle Building Limited.

1 G2 - NORTH ELEVATION
SCALE 1/32



2 G2 - SOUTH ELEVATION
SCALE 1/32



- MATERIAL LEGEND**
- 1 FINEST CONCRETE COLOR 1
 - 2 FINEST CONCRETE COLOR 2
 - 3 ALUM. CLADDING SYSTEM - COLOR 1
 - 4 ALUM. / METAL SLAB
 - 5 ALUM. CLADDING SYSTEM - VERTICAL LINE
 - 6 ALUM. CLADDING SYSTEM - HORIZONTAL LINE
 - 7 ALUM. CLADDING SYSTEM - VERTICAL LINE
 - 8 ALUM. CLADDING SYSTEM - HORIZONTAL LINE
 - 9 ALUM. CLADDING SYSTEM - VERTICAL LINE
 - 10 ALUM. CLADDING SYSTEM - HORIZONTAL LINE
 - 11 ALUM. CLADDING SYSTEM - VERTICAL LINE
 - 12 ALUM. CLADDING SYSTEM - HORIZONTAL LINE
 - 13 ALUM. CLADDING SYSTEM - VERTICAL LINE
 - 14 ALUM. CLADDING SYSTEM - HORIZONTAL LINE
 - 15 ALUM. CLADDING SYSTEM - VERTICAL LINE
 - 16 ALUM. CLADDING SYSTEM - HORIZONTAL LINE
 - 17 ALUM. CLADDING SYSTEM - VERTICAL LINE
 - 18 ALUM. CLADDING SYSTEM - HORIZONTAL LINE
 - 19 ALUM. CLADDING SYSTEM - VERTICAL LINE
 - 20 ALUM. CLADDING SYSTEM - HORIZONTAL LINE
 - 21 ALUM. CLADDING SYSTEM - VERTICAL LINE
 - 22 ALUM. CLADDING SYSTEM - HORIZONTAL LINE
 - 23 ALUM. CLADDING SYSTEM - VERTICAL LINE
 - 24 ALUM. CLADDING SYSTEM - HORIZONTAL LINE
 - 25 ALUM. CLADDING SYSTEM - VERTICAL LINE
 - 26 ALUM. CLADDING SYSTEM - HORIZONTAL LINE
 - 27 ALUM. CLADDING SYSTEM - VERTICAL LINE
 - 28 ALUM. CLADDING SYSTEM - HORIZONTAL LINE
 - 29 ALUM. CLADDING SYSTEM - VERTICAL LINE
 - 30 ALUM. CLADDING SYSTEM - HORIZONTAL LINE
 - 31 ALUM. CLADDING SYSTEM - VERTICAL LINE
 - 32 ALUM. CLADDING SYSTEM - HORIZONTAL LINE
 - 33 ALUM. CLADDING SYSTEM - VERTICAL LINE
 - 34 ALUM. CLADDING SYSTEM - HORIZONTAL LINE
 - 35 ALUM. CLADDING SYSTEM - VERTICAL LINE
 - 36 ALUM. CLADDING SYSTEM - HORIZONTAL LINE
 - 37 ALUM. CLADDING SYSTEM - VERTICAL LINE
 - 38 ALUM. CLADDING SYSTEM - HORIZONTAL LINE
 - 39 ALUM. CLADDING SYSTEM - VERTICAL LINE
 - 40 ALUM. CLADDING SYSTEM - HORIZONTAL LINE
 - 41 ALUM. CLADDING SYSTEM - VERTICAL LINE
 - 42 ALUM. CLADDING SYSTEM - HORIZONTAL LINE
 - 43 ALUM. CLADDING SYSTEM - VERTICAL LINE
 - 44 ALUM. CLADDING SYSTEM - HORIZONTAL LINE
 - 45 ALUM. CLADDING SYSTEM - VERTICAL LINE
 - 46 ALUM. CLADDING SYSTEM - HORIZONTAL LINE
 - 47 ALUM. CLADDING SYSTEM - VERTICAL LINE
 - 48 ALUM. CLADDING SYSTEM - HORIZONTAL LINE
 - 49 ALUM. CLADDING SYSTEM - VERTICAL LINE
 - 50 ALUM. CLADDING SYSTEM - HORIZONTAL LINE
 - 51 ALUM. CLADDING SYSTEM - VERTICAL LINE
 - 52 ALUM. CLADDING SYSTEM - HORIZONTAL LINE
 - 53 ALUM. CLADDING SYSTEM - VERTICAL LINE
 - 54 ALUM. CLADDING SYSTEM - HORIZONTAL LINE
 - 55 ALUM. CLADDING SYSTEM - VERTICAL LINE
 - 56 ALUM. CLADDING SYSTEM - HORIZONTAL LINE
 - 57 ALUM. CLADDING SYSTEM - VERTICAL LINE
 - 58 ALUM. CLADDING SYSTEM - HORIZONTAL LINE
 - 59 ALUM. CLADDING SYSTEM - VERTICAL LINE
 - 60 ALUM. CLADDING SYSTEM - HORIZONTAL LINE
 - 61 ALUM. CLADDING SYSTEM - VERTICAL LINE
 - 62 ALUM. CLADDING SYSTEM - HORIZONTAL LINE
 - 63 ALUM. CLADDING SYSTEM - VERTICAL LINE
 - 64 ALUM. CLADDING SYSTEM - HORIZONTAL LINE
 - 65 ALUM. CLADDING SYSTEM - VERTICAL LINE
 - 66 ALUM. CLADDING SYSTEM - HORIZONTAL LINE
 - 67 ALUM. CLADDING SYSTEM - VERTICAL LINE
 - 68 ALUM. CLADDING SYSTEM - HORIZONTAL LINE
 - 69 ALUM. CLADDING SYSTEM - VERTICAL LINE
 - 70 ALUM. CLADDING SYSTEM - HORIZONTAL LINE
 - 71 ALUM. CLADDING SYSTEM - VERTICAL LINE
 - 72 ALUM. CLADDING SYSTEM - HORIZONTAL LINE
 - 73 ALUM. CLADDING SYSTEM - VERTICAL LINE
 - 74 ALUM. CLADDING SYSTEM - HORIZONTAL LINE
 - 75 ALUM. CLADDING SYSTEM - VERTICAL LINE
 - 76 ALUM. CLADDING SYSTEM - HORIZONTAL LINE
 - 77 ALUM. CLADDING SYSTEM - VERTICAL LINE
 - 78 ALUM. CLADDING SYSTEM - HORIZONTAL LINE
 - 79 ALUM. CLADDING SYSTEM - VERTICAL LINE
 - 80 ALUM. CLADDING SYSTEM - HORIZONTAL LINE
 - 81 ALUM. CLADDING SYSTEM - VERTICAL LINE
 - 82 ALUM. CLADDING SYSTEM - HORIZONTAL LINE
 - 83 ALUM. CLADDING SYSTEM - VERTICAL LINE
 - 84 ALUM. CLADDING SYSTEM - HORIZONTAL LINE
 - 85 ALUM. CLADDING SYSTEM - VERTICAL LINE
 - 86 ALUM. CLADDING SYSTEM - HORIZONTAL LINE
 - 87 ALUM. CLADDING SYSTEM - VERTICAL LINE
 - 88 ALUM. CLADDING SYSTEM - HORIZONTAL LINE
 - 89 ALUM. CLADDING SYSTEM - VERTICAL LINE
 - 90 ALUM. CLADDING SYSTEM - HORIZONTAL LINE
 - 91 ALUM. CLADDING SYSTEM - VERTICAL LINE
 - 92 ALUM. CLADDING SYSTEM - HORIZONTAL LINE
 - 93 ALUM. CLADDING SYSTEM - VERTICAL LINE
 - 94 ALUM. CLADDING SYSTEM - HORIZONTAL LINE
 - 95 ALUM. CLADDING SYSTEM - VERTICAL LINE
 - 96 ALUM. CLADDING SYSTEM - HORIZONTAL LINE
 - 97 ALUM. CLADDING SYSTEM - VERTICAL LINE
 - 98 ALUM. CLADDING SYSTEM - HORIZONTAL LINE
 - 99 ALUM. CLADDING SYSTEM - VERTICAL LINE
 - 100 ALUM. CLADDING SYSTEM - HORIZONTAL LINE

Quadrangle

Architectural Firm
 14034 1250
 TORONTO, ON

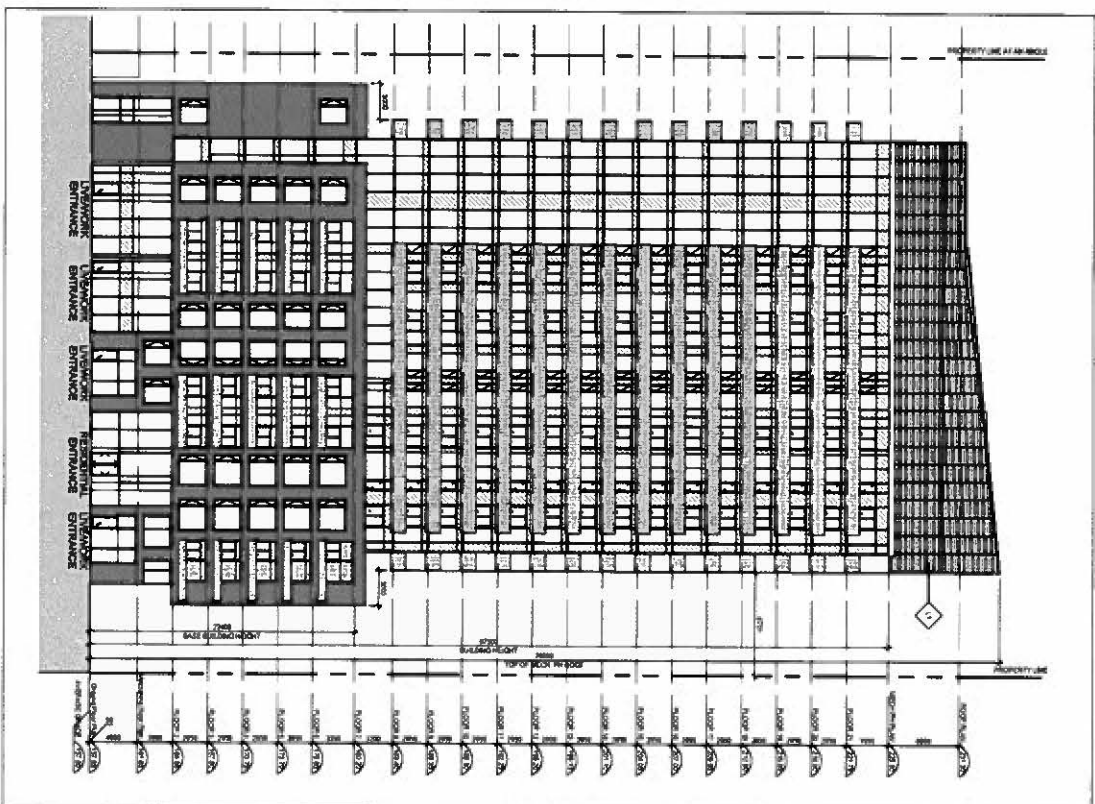
Lawrence & Midland Block G
 for
 Avramco Investments Limited

14034 1250 LA SSC
 PROJECT NO. 14034 1250
 Block G2 - North & South
 Elevations

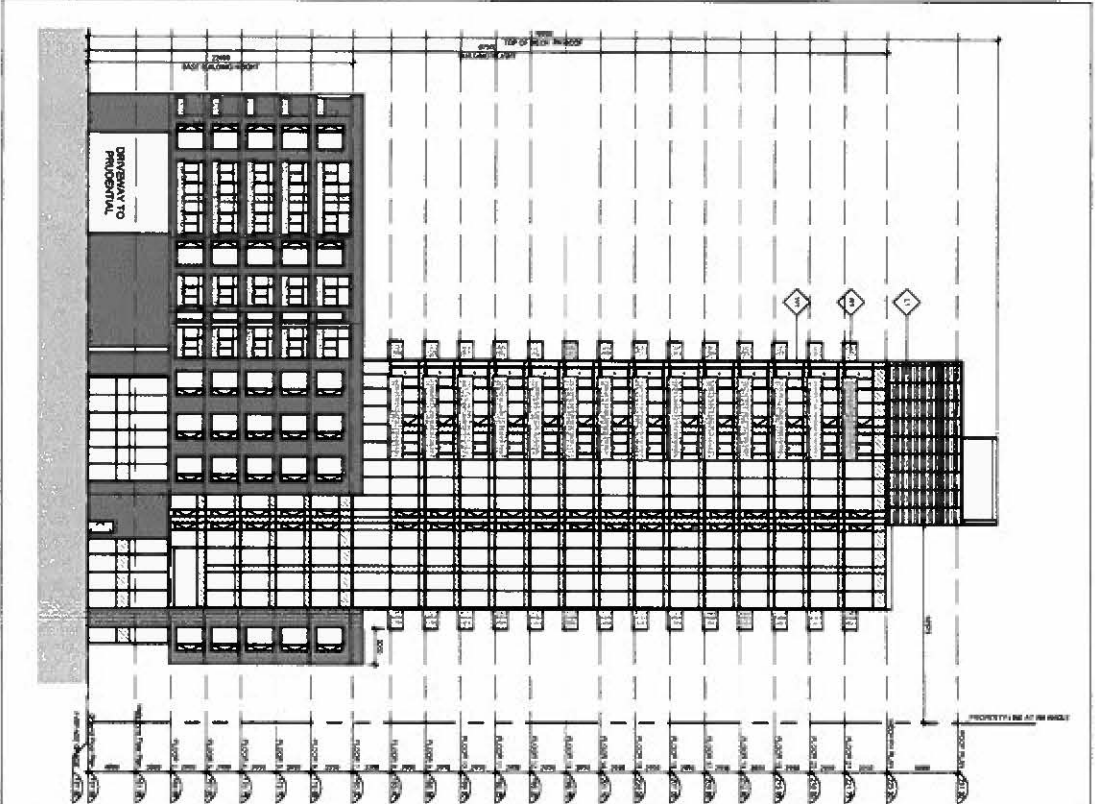
G-404.S

This drawing is the property of the Architect and shall not be reproduced, copied, or transmitted in any form or by any means, electronic or mechanical, including photocopying, recording, or by any information storage and retrieval system, without the prior written permission of the Architect. The Architect shall not be held responsible for any errors or omissions in this drawing.

EAST ELEVATION



SOUTH ELEVATION



- MATERIAL LEGEND**
- 1. PRECAST CONCRETE (CONCRETE)
 - 2. BRICK (COMMON BRICK)
 - 3. ALUMINUM WINDOW FRAME (ALUMINUM)
 - 4. ALUMINUM WINDOW GLASS
 - 5. WINDOW GLASS (WINDOW GLASS)
 - 6. WINDOW GLASS (WINDOW GLASS)
 - 7. WINDOW GLASS (WINDOW GLASS)
 - 8. WINDOW GLASS (WINDOW GLASS)
 - 9. WINDOW GLASS (WINDOW GLASS)
 - 10. WINDOW GLASS (WINDOW GLASS)
 - 11. WINDOW GLASS (WINDOW GLASS)
 - 12. WINDOW GLASS (WINDOW GLASS)

2025-10-10	Revised	Revised
2025-09-24	Revised	Revised
2025-09-12	Revised	Revised
2025-08-28	Revised	Revised
2025-08-14	Revised	Revised
2025-08-01	Revised	Revised
2025-07-18	Revised	Revised
2025-07-05	Revised	Revised
2025-06-22	Revised	Revised
2025-06-09	Revised	Revised
2025-05-26	Revised	Revised
2025-05-13	Revised	Revised
2025-04-30	Revised	Revised
2025-04-17	Revised	Revised
2025-04-04	Revised	Revised
2025-03-21	Revised	Revised
2025-03-08	Revised	Revised
2025-02-25	Revised	Revised
2025-02-12	Revised	Revised
2025-01-29	Revised	Revised
2025-01-16	Revised	Revised
2025-01-03	Revised	Revised
2024-12-20	Revised	Revised
2024-12-07	Revised	Revised
2024-11-24	Revised	Revised
2024-11-11	Revised	Revised
2024-10-28	Revised	Revised
2024-10-15	Revised	Revised
2024-10-02	Revised	Revised
2024-09-19	Revised	Revised
2024-09-06	Revised	Revised
2024-08-23	Revised	Revised
2024-08-10	Revised	Revised
2024-07-27	Revised	Revised
2024-07-14	Revised	Revised
2024-07-01	Revised	Revised
2024-06-18	Revised	Revised
2024-06-05	Revised	Revised
2024-05-22	Revised	Revised
2024-05-09	Revised	Revised
2024-04-26	Revised	Revised
2024-04-13	Revised	Revised
2024-03-31	Revised	Revised
2024-03-18	Revised	Revised
2024-03-05	Revised	Revised
2024-02-22	Revised	Revised
2024-02-09	Revised	Revised
2024-01-26	Revised	Revised
2024-01-13	Revised	Revised
2024-01-01	Revised	Revised

Quadrangle

Quadrangle Building Limited
 1777 Yonge Street, Suite 2000
 Toronto, Ontario M5S 1Y5
 Tel: (416) 593-8888
 Fax: (416) 593-8889
 Email: info@quadrangle.ca
 Website: www.quadrangle.ca

Lawrence & Midland Block H
 for
 Arastando Investments Limited
 14094 1-200 LA SSC
 Toronto, Ontario M5S 1Y5
 Block H - South & East
 Elevations

H-402.S