



Fontbonne Ministries

SISTERS OF ST. JOSEPH, TORONTO

Deputation Executive Committee Ex.9, Ontario Line, October 23, 2019

Good morning/afternoon.

My name is Ben Vozzolo and I'm the Executive Director of Fontbonne Ministries, a community and Social Services agency founded by the Sisters of St. Joseph. We operate 6 programs across Toronto. Three of our programs: Fontbonne Place, Mustard Seed and In Good Company are located at 791 Queen St. East at the intersection with Degrassi Street. The building is between 14 and 25 meters from the tracks over which the Ontario Line vehicles would run.

With me today is my colleague Leanne Kloppenborg. Sister Gwen Smith, one of Fontbonne Ministries' founding sisters, also referred to as the "Queen of Queen Street", a long time resident of Fontbonne Place, and founder of Mustard Seed would have also joined me today, but she is on a retreat this week

Fontbonne Place is a private residence with 18 rent-geared-to-income apartments serving older single women who have difficulty finding housing. Adjacent is Mustard Seed which serves vulnerable adults, offering drop-in programs, nutritious meals, skill-building workshops and other programming. From this building we also coordinate our friendly visiting program, In Good Company.

Although we welcome and support building new and improved transit for everyone's benefit, we have a few concerns we want to voice regarding the change to an overland rather than subway service and the Ontario Line stop at Queen and DeGrassi Streets.

- Because the populations we serve are vulnerable and many of our residents and participants have experienced trauma, issues around noise and noise pollution are of concern.
 - Noise from passing trains and construction and maintenance can be disconcerting for people who are already dealing with mental, physical or emotional distress.
 - One of our residents shared that she would not know how to emotionally or physically deal with the noise and vibration resulting from the increased frequency of trains running past her home, and she would not be able to move because there is no where else for her to go.
- The impact on greenspace in the area – both for humans and for plants and animals is also top of mind. In front of our building, we have one of the only gardens in this stretch of Queen Street. We maintain at our own cost this beautiful space ^{to} remind our tenants and participants that we value them and also to contribute to the ambiance of the neighbourhood. The BIA often makes use of this space for community events, and our neighbours are always welcome to sit and enjoy the space. We are not sure what the impact on the trees and plants will be of this additional above-ground service which will have a station right across the street.
- The proximity of an expanded rail bed to Fontbonne Place and the vibration from the increased frequency of trains could have a negative impact on the building itself.



Fontbonne Ministries

SISTERS OF ST. JOSEPH, TORONTO

- Liveability is another concern. While increased transit for all is welcome, the vibration and noise of the above ground service will also impact liveability for people who live, visit and work at Fontbonne Place and Mustard Seed 7 days a week.

I thank you for the opportunity to speak today and understand that there is no easy solution and that increased transit is, overall, a good thing for the City of Toronto. However, we ask that the Committee and City Council consider the potential temporary and permanent impacts to residents and businesses in the Leslieville/Riverside Community as planning, design and delivery of the Ontario Line proceeds; and request that Metrolinx run the portion of the Ontario Line between Gerrard Street and Eastern Avenue underground or ensure that noise and vibration mitigation is implemented all along the Ontario Line and that greenspace is protected.

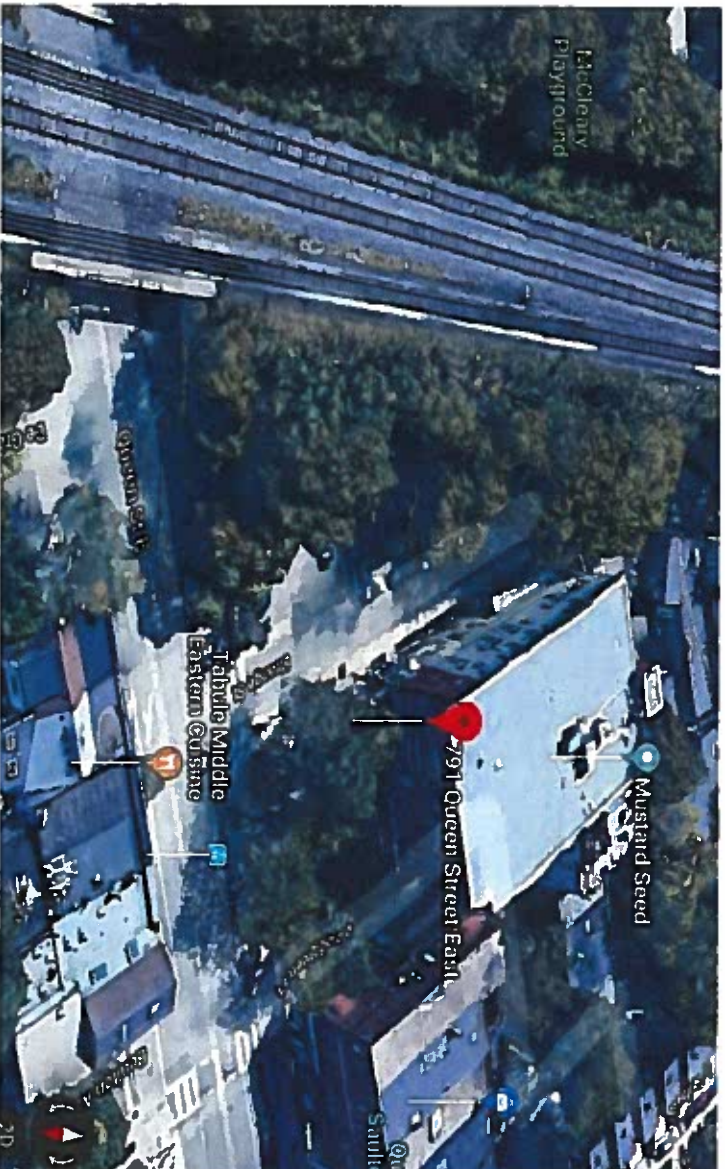


Official Record of Highways



Fontbonne Ministries
SISTERS OF ST. JOSEPH, TORONTO





Fontbonne Ministries
SISTERS OF ST. JOSEPH, TORONTO

