

**Revised
DI7.4**



Wallace Emerson Community Centre and Child Care

Accessibility Presentation

February 3, 2020

Perkins&Will

Wallace Emerson Community Centre and Child Care

Location: Dufferin Street and Dupont Avenue

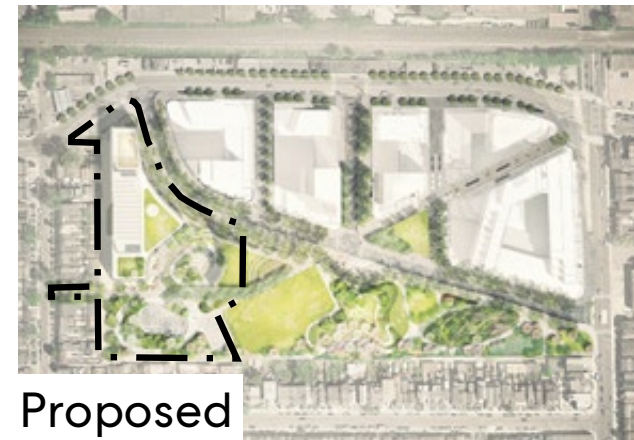
Block 6 of the Reimagine Galleria Development

Building

- Program:**
- 25m lane swimming pool
 - Leisure pool
 - Gymnasium with running track
 - Child Care Centre
 - Multi-purpose rooms
 - Dance, Aerobics and Fitness Studios
 - Administration offices



Existing



Proposed

Park Program:

- Child care playground
- Multi-use skate trail
- BMX and skateboard park
- Multi-sport court
- Water play features
- Community gathering spaces

Wallace Emerson Community Centre and Child Care

Accessibility Regulations:

- Ontario Building Code (OBC)
- Accessibility for Ontarians with Disabilities Act (AODA)
- City of Toronto Accessibility Design Guidelines
- Child Care Design & Technical Guideline

Design Overview

Project Boundary

Community Centre & Child Care

Fieldhouse

Forum

Skate Trail

BMX and Skateboard Feature



Design Overview – the forum



Design Overview – lobby



Site Plan – Community Centre Access

Accessible routes to and through the site:

- Pedestrian access from Dupont Street, the new diagonal road and from laneways to the south
- All routes designed with adequate width and slope
- minimum 2100mm wide and 5% running slope and 2% cross slope
- Concrete paving and unit pavers

Site Plan - Community Centre Access



Site Plan – Park Accessible Routes



Park Forum:

- **Gathering area with accessible seating**
- **Accessible water play & splash pad with temporary benches in summer to visually mark the edge of water play.**



Paths:

- Accessible routes with smooth pavement



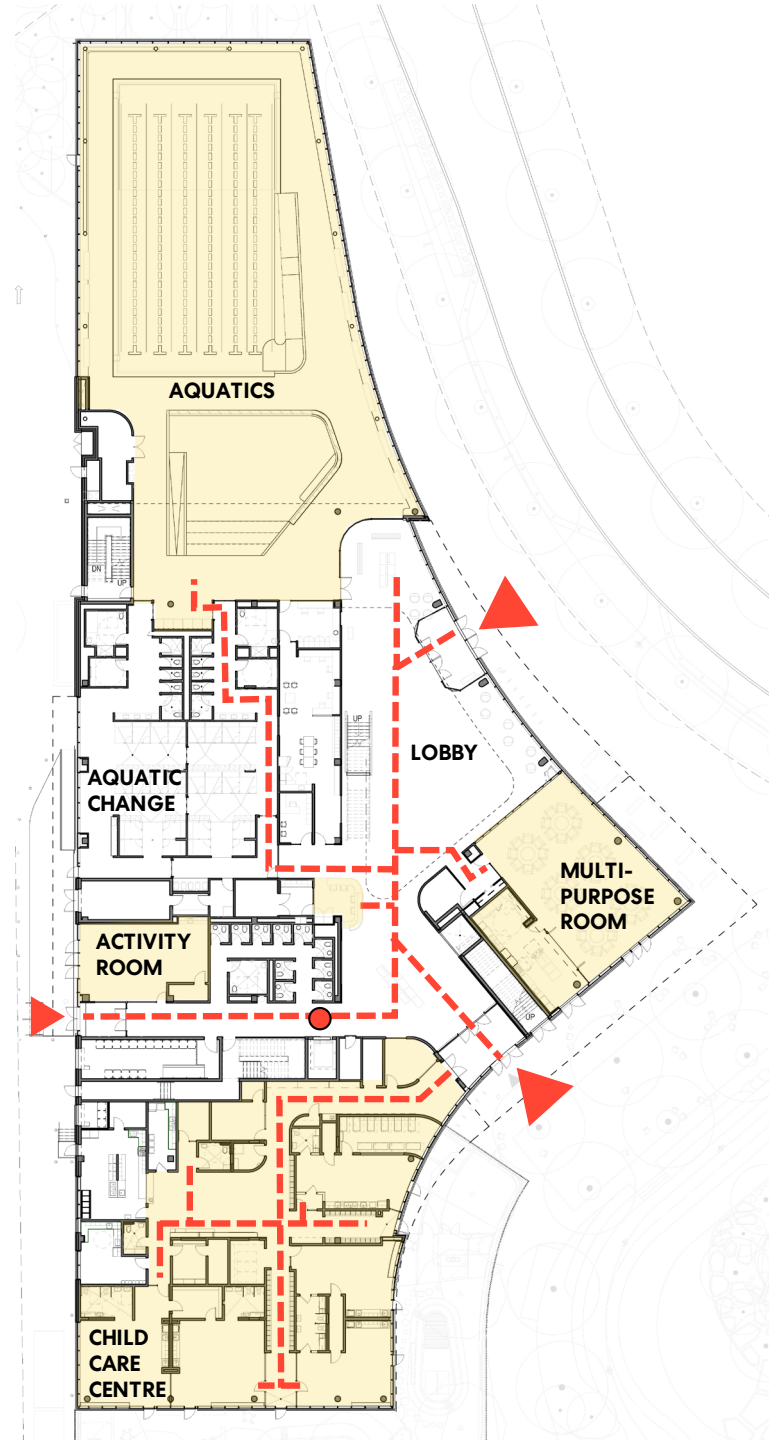
Skating Trail:

- Flush (no curb) access to ice surface with temporary benches in winter to visually mark the edge of ice



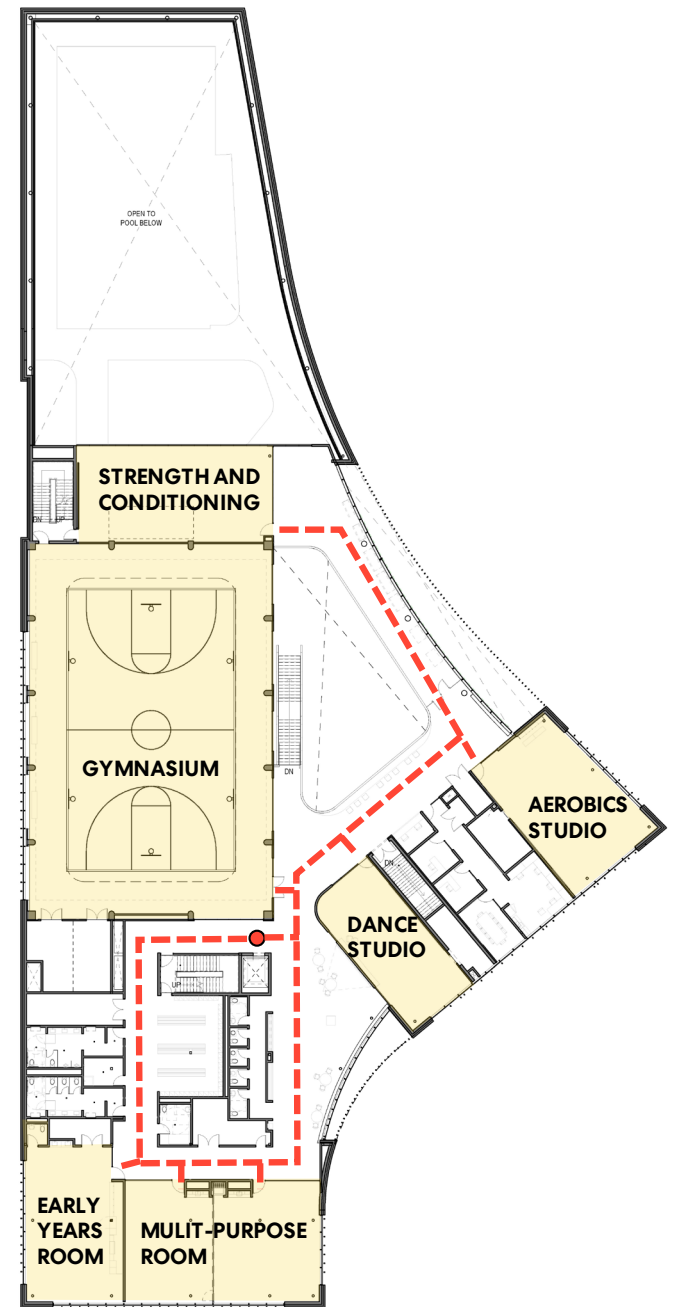
Ground Level of Community Centre

- All entrance doors with power door operators and level transition
- Elevator in close proximity to entrance and adjacent to service desk
- Service desk conforming to accessibility standard
- Barrier free accessible route throughout all public areas of the building
- 3 universal washrooms and 2 drinking fountains/bottle fill stations on this level



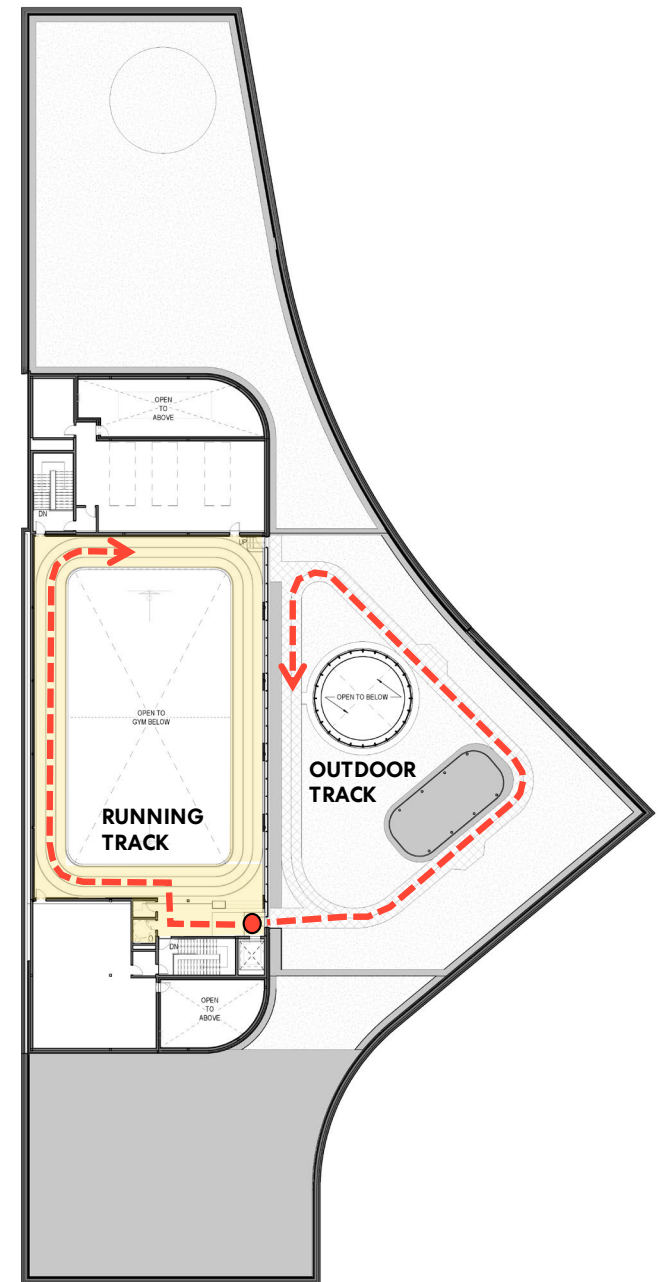
Second Level of Community Centre

- Barrier free accessible route throughout all public areas of the building
- Wide doors to program rooms with power door operators
- Flexible lounge seating and viewing areas
- Accessible sinks and millwork
- 1 universal washroom and 2 drinking fountains/bottle fill stations on this level



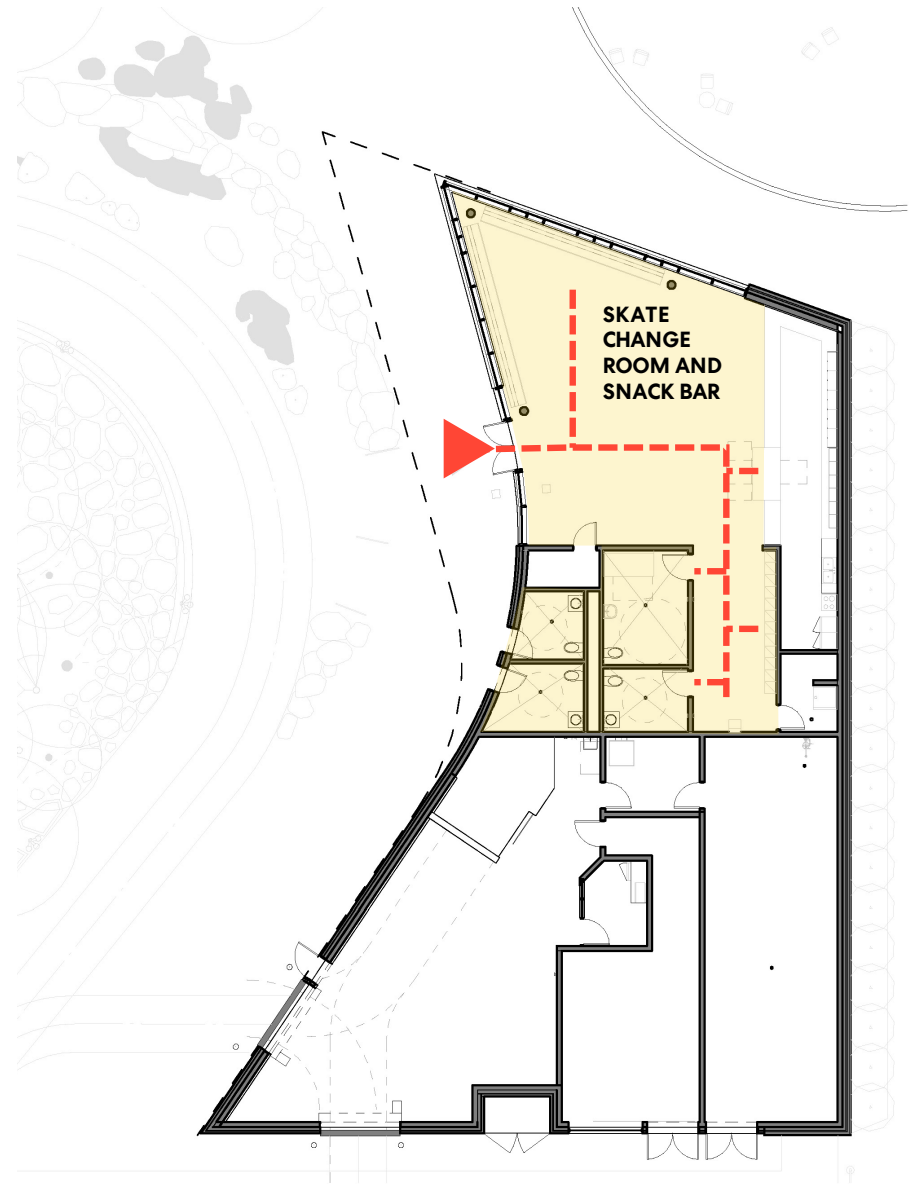
Mezzanine Level of Community Centre

- Barrier free accessible route throughout all public areas of the building
- Barrier free access to roof top walking track
- Barrier free washroom on this level and 1 drinking fountain/bottle fill station



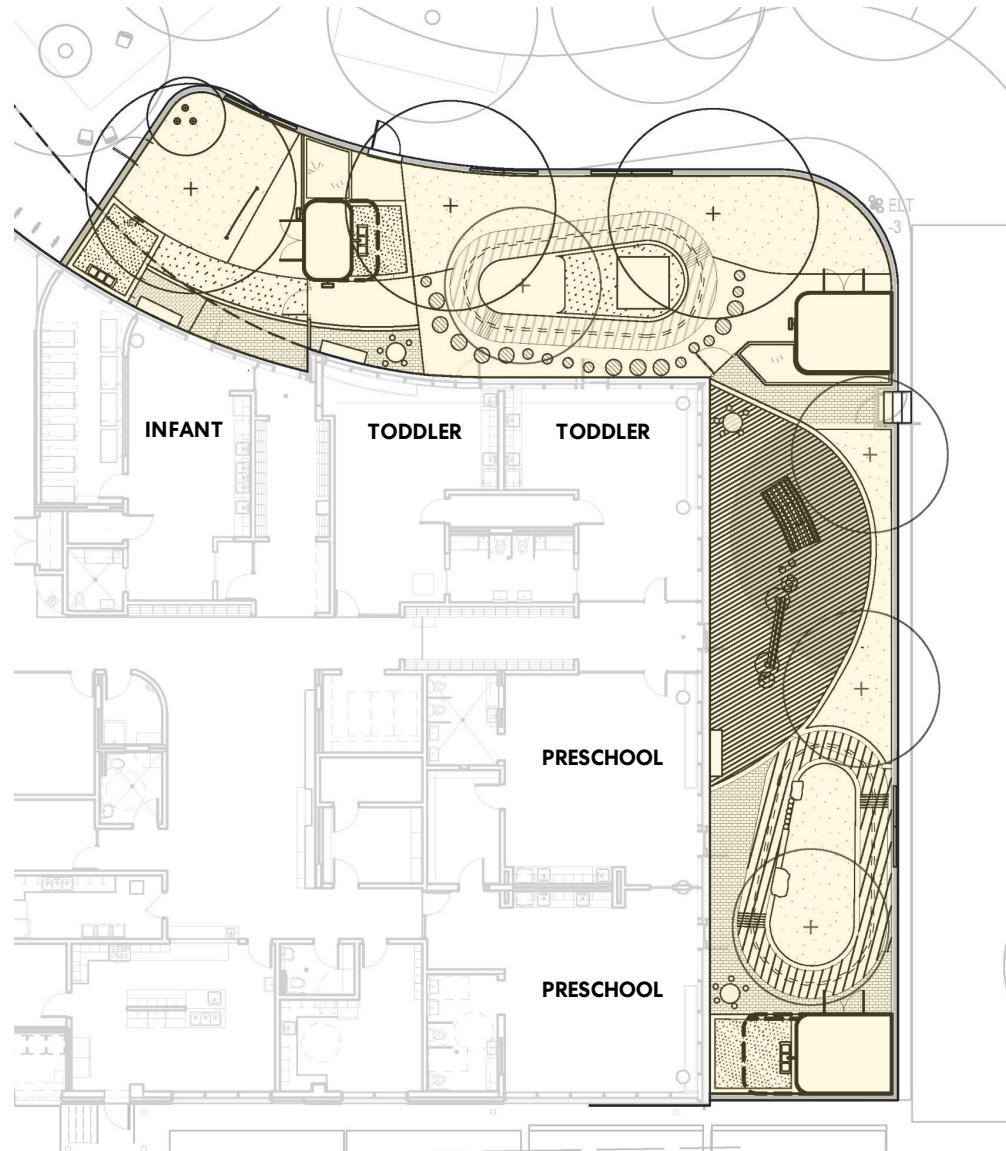
Fieldhouse (One level)

- Entrance doors with power door operators and level transition
- Skate lending and snack bar conforming to accessibility standard
- Barrier free accessible route throughout all public areas of the building
- 1 universal washroom and 2 drinking fountains/bottle fill stations (1 is outdoors)

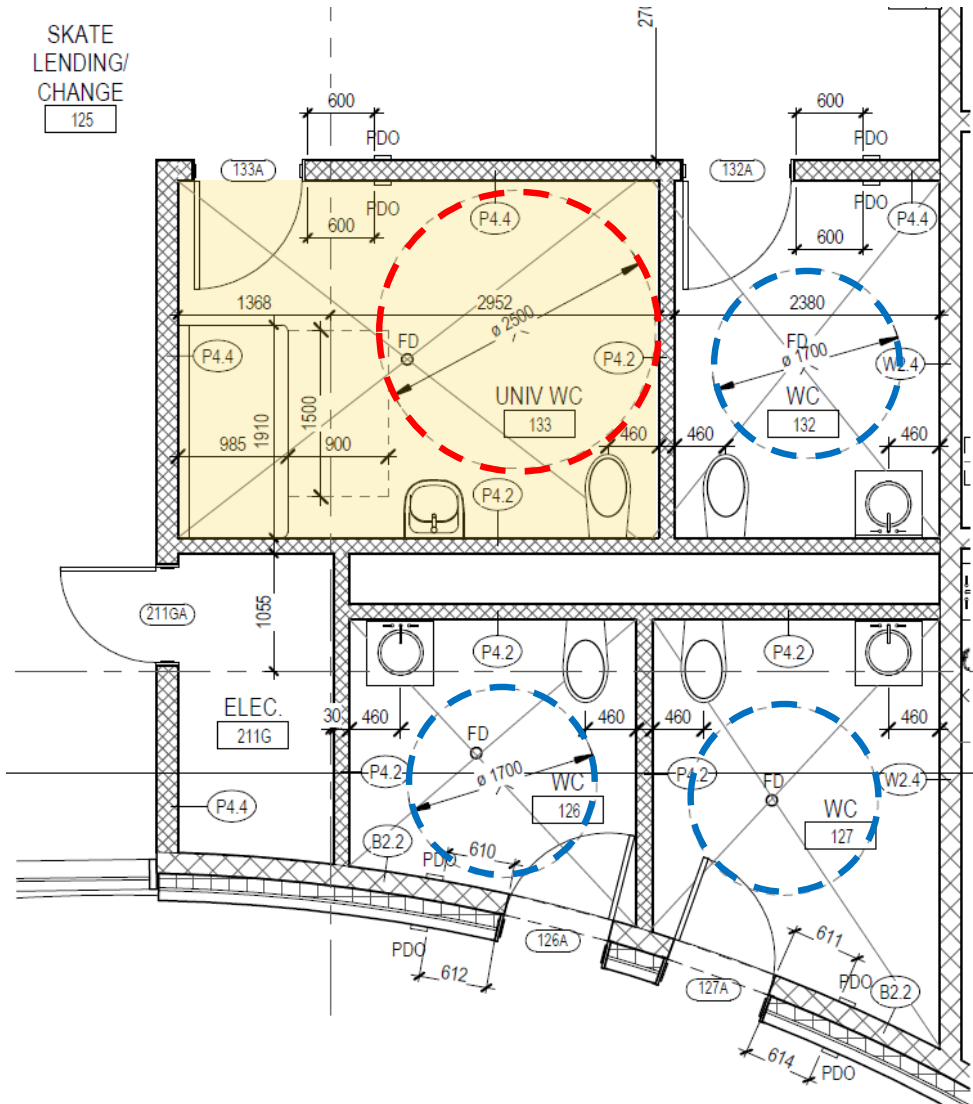


Child Care Playground

- Minimal walking barriers - paving transitions are flush
- Accessible play surface through rubber
- Low sandboxes with elevated water table enabling wheelchair access
- Ample opportunity for variety of play not limited to gross motor development incl. creative/imaginative play through blackboards, acrylic panels, sand, playhouse and decking
- Provision of areas to observe play



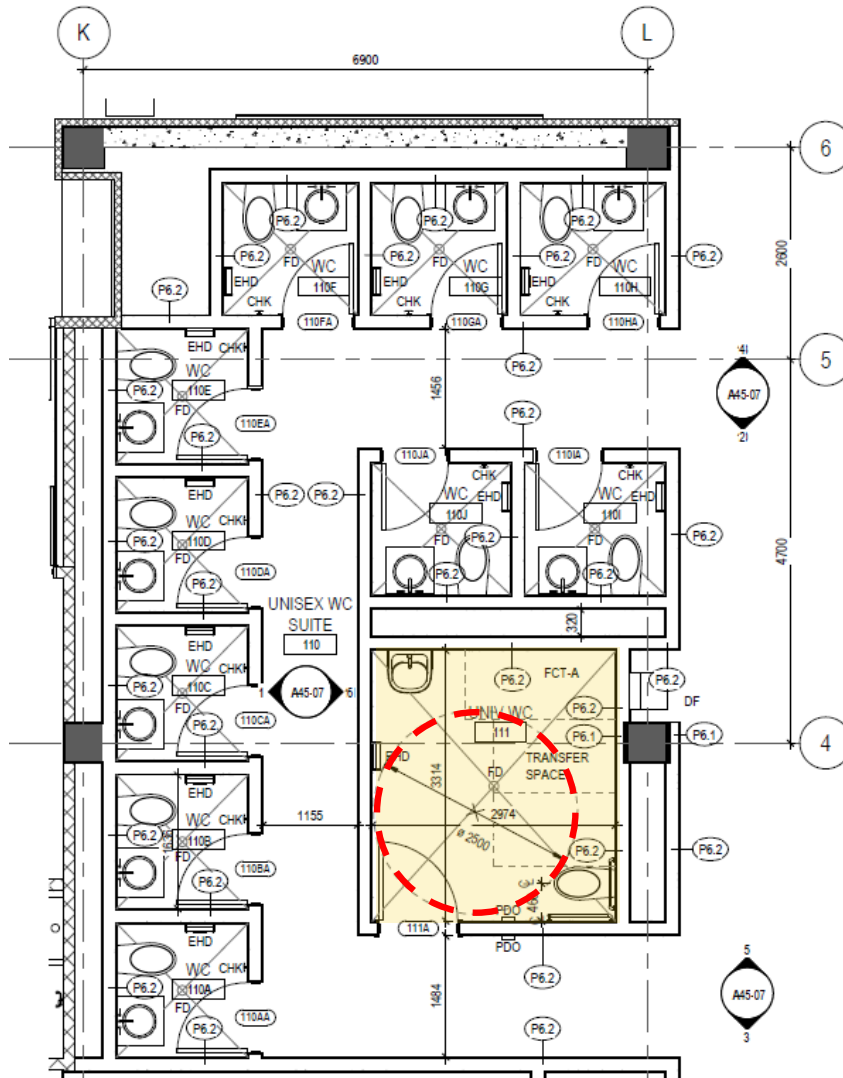
Washrooms



Fieldhouse washrooms:

- Interior Universal Washrooms located along the barrier free accessible route
- Equipped with power door operators
- Exterior barrier free washrooms with 1700mm turning radius

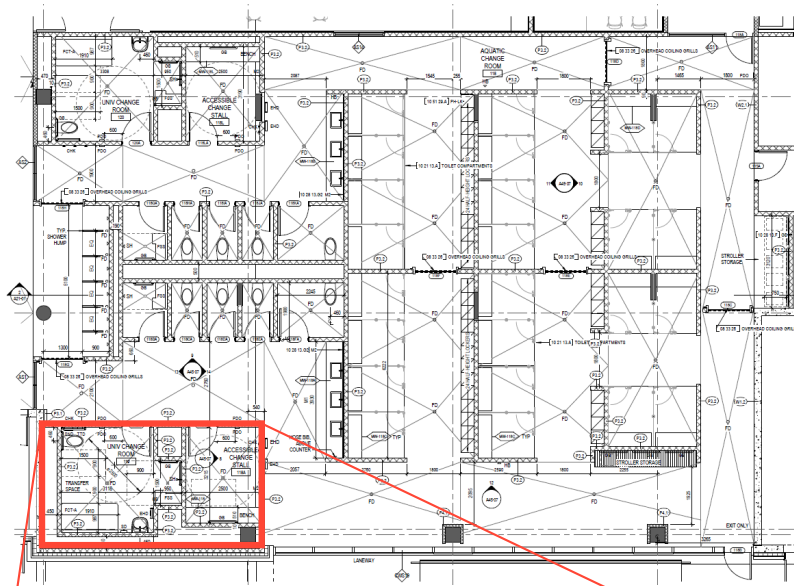
Washrooms



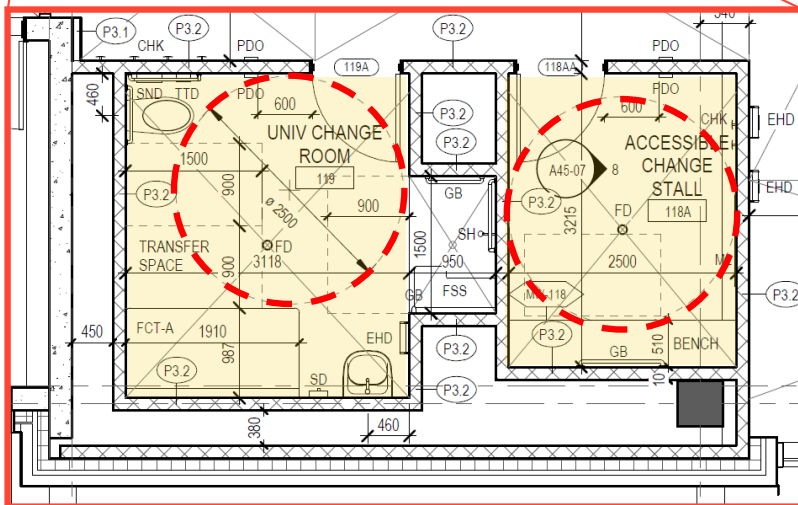
Ground floor washrooms:

- Universal Washrooms on ground and second floors, located along the barrier free accessible route
- Equipped with power door operators
- 2500mm turning radius (universal wc)

Aquatic Change rooms

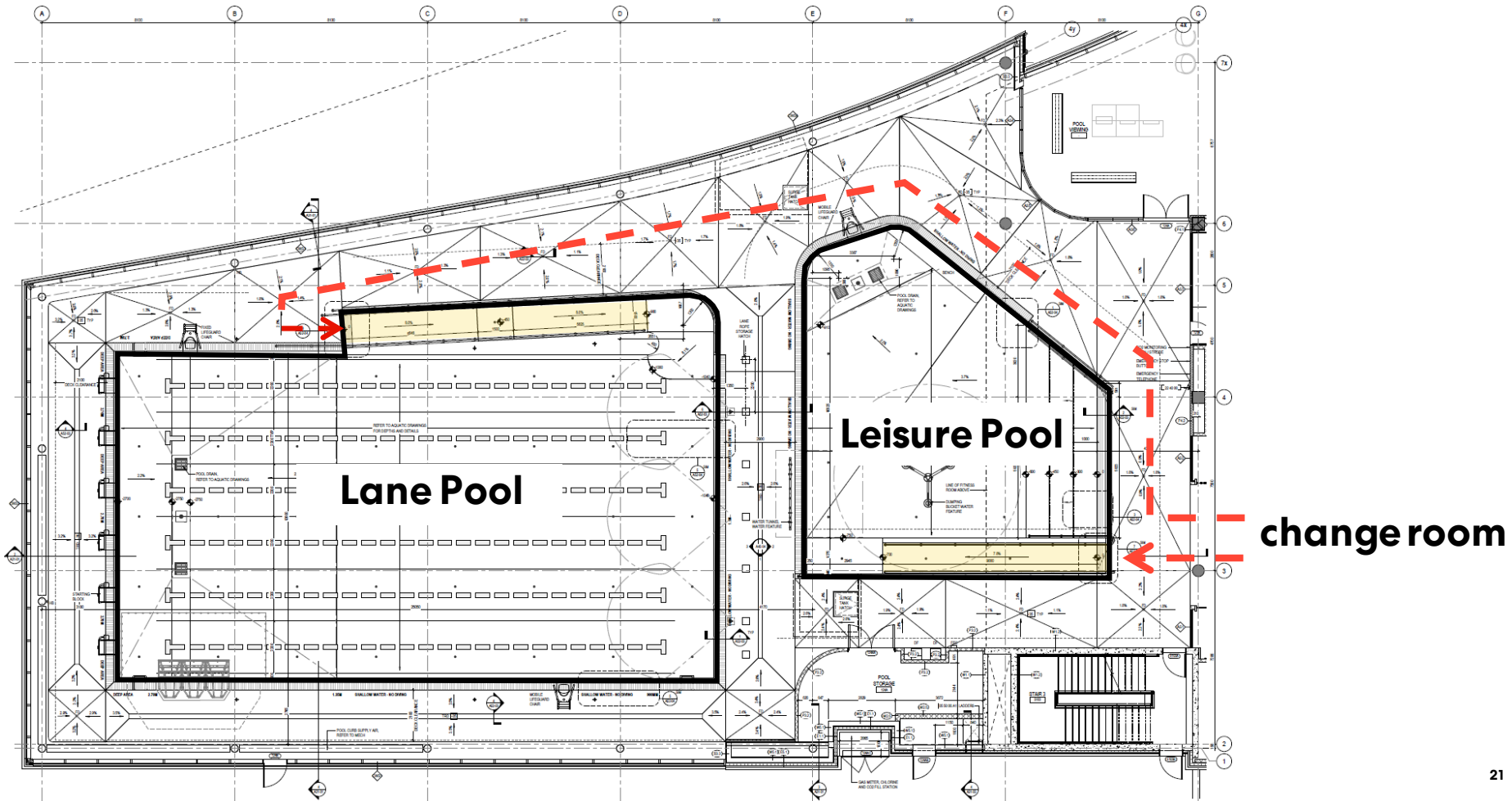


- 2 unisex change rooms that include two universal washrooms and two universal family change stalls conforming to the Toronto Accessibility Design Guidelines
- Full height lockers at the end of each locker row
- Power door operators at change room entrance and barrier free path throughout change rooms



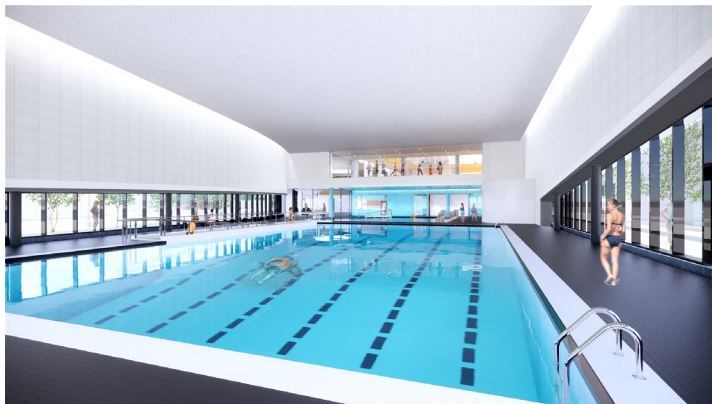
Aquatics

- Ramp entry to pools
- Pool deck and lobby viewing areas



Finishes

- Floor to wall contrast
- Contrast in door hardware and plumbing fixtures
- Accent tile and wood used as wayfinding elements to locate the stairs and elevator
- Tactile indicators on stairs, ramps and path to service counter & elevator



Questions and Feedback

1. We believe that the high-contrast approach to interior finishes, open and visually connected layout make this a facility that is welcoming to everyone in the community. We would like to hear about any concerns you may have with the design or suggestions to achieve an even higher level of accessibility.
2. Are there any issues that you have encountered at recently completed facilities that should be avoided in this project?
3. Since the City of Toronto Accessibility Design Guidelines are still in draft form are there any items (as they relate to this project) that you think should be reconsidered or added?

Perkins&Will

Thank You

Accessibility Presentation February 3 2020