

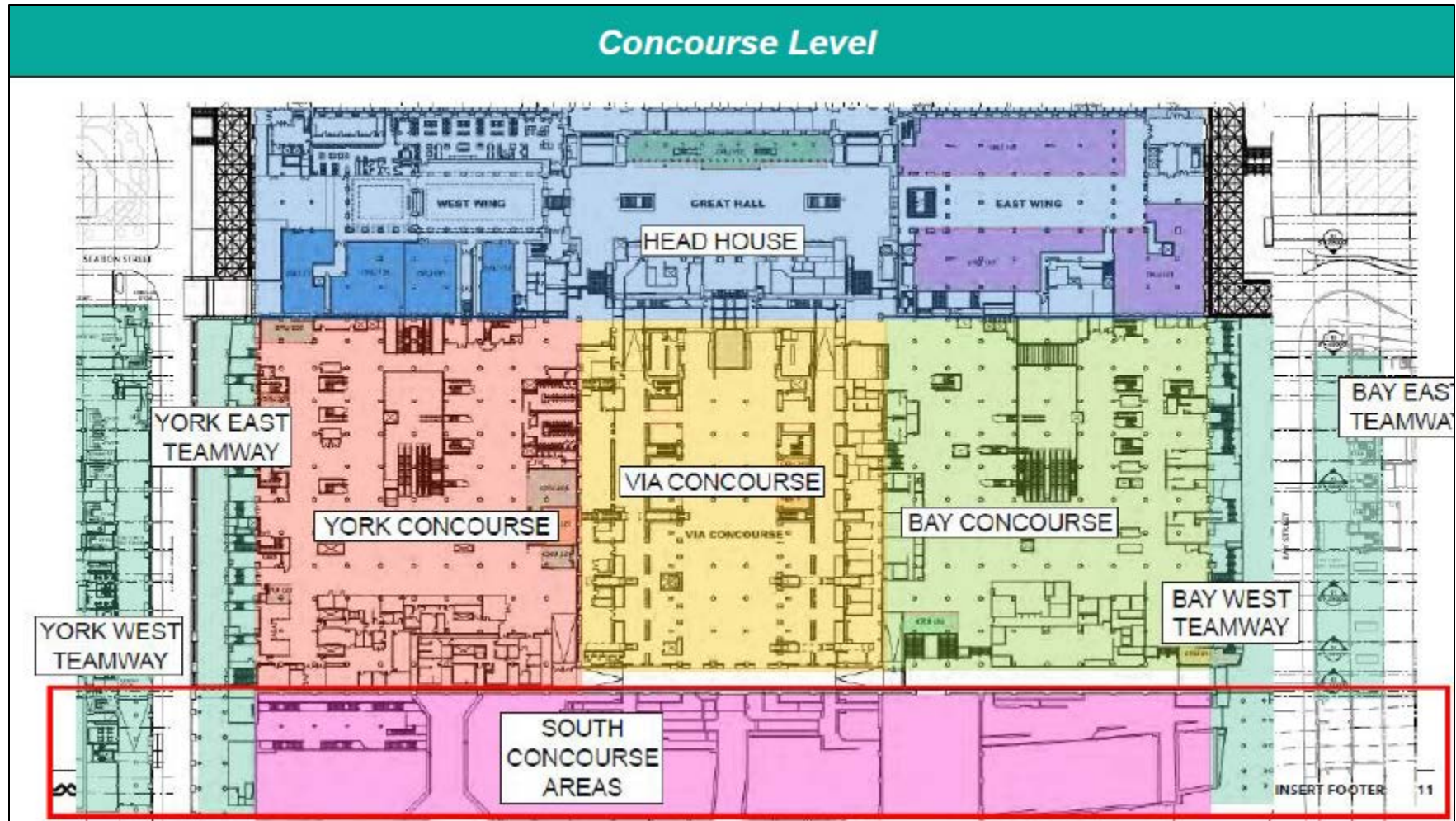
EX16.6


ATTACHMENT 1

USEP, PACKAGE 1 – SUMMARY OF EXPROPRIATED PROPERTY INTERESTS

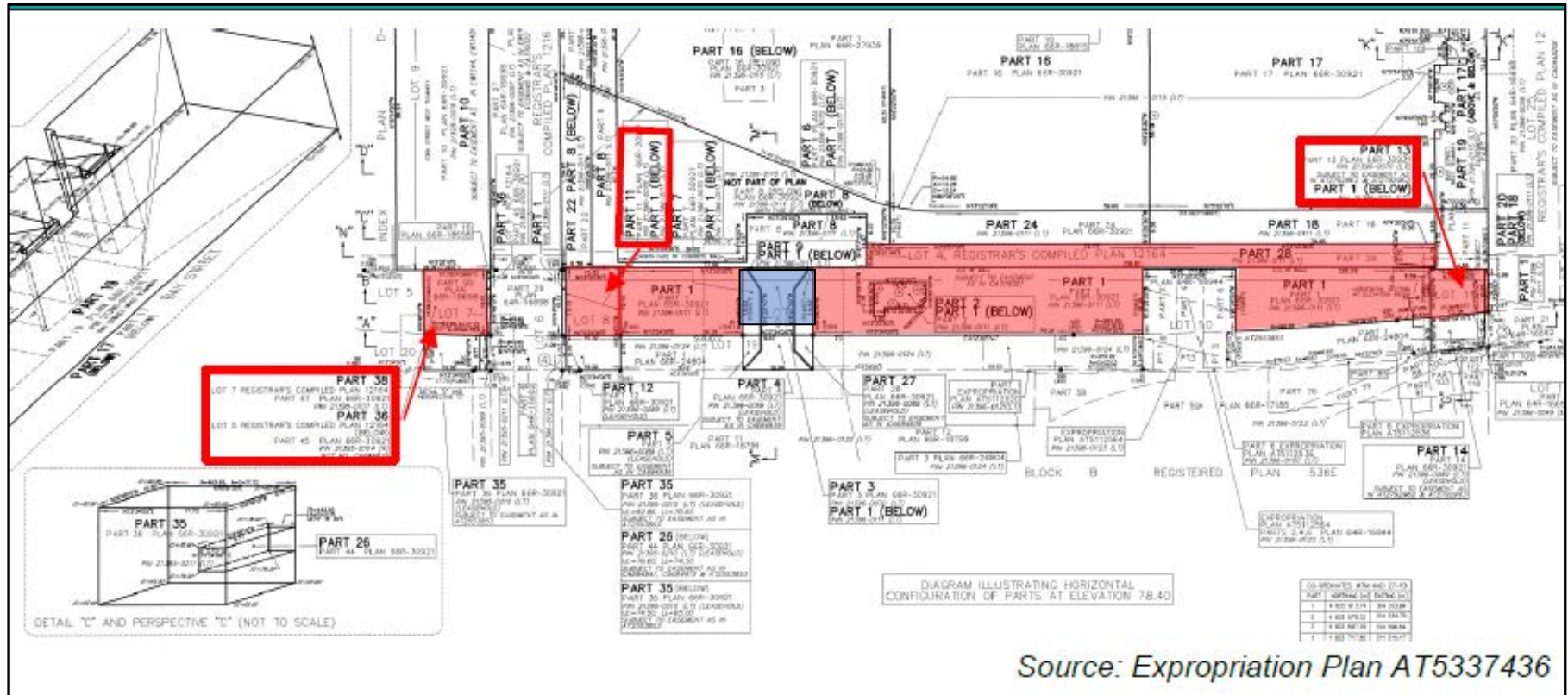
Interest Expropriated from City	Approximate Location of Expropriated Interest and Corresponding Part Number on Expropriation Plan AT5337436	Approximate Area (m2)
Fee Simple Interest	<ul style="list-style-type: none"> • South Corridors/Unexcavated Areas South of Station – Parts 1 & 2 • Air Space above South Corridors/Unexcavated Areas – Parts 33 & 41 • Arcade (Corridor south of VIA Concourse) - Part 28 • Part of Truck Tunnel – Parts 3, 6, 7 & 9 • Part of York East Teamway – Part 11 • Part of York West Teamway – Parts 36 & 38 • Part of Bay West Teamway – Part 13 • Part of York Street - Above Viaduct – Parts 29, 32, 37 • Part of Bay Street - Above Viaduct – Parts 30, 31, 34, 39 & 40 	19,642.90
Leasehold Interest	<ul style="list-style-type: none"> • Part of Truck Tunnel – Parts 4 & 5 • Part of York East Teamway – Part 27 • Part of York West Teamway – Parts 12, 26 & 35 • Part of Bay West Teamway – Part 14 	690.50
Temporary Exclusive Easement from March 1, 2020 to December 31, 2024	<ul style="list-style-type: none"> • Head House (includes Great Hall, East Wing, Bay Street Promenade, Front Street Promenade & York Street Promenade) – Part 25 • VIA Concourse & Fresh Market/Back of House Area Below VIA Concourse – Parts 16, 24, 42 • Bay Concourse & Retail Area/Back of House Area Below Bay Concourse – Parts 15, 17, 18 • Food Court & Back of House Area Below York Concourse – Parts 8 & 16 • Part of York Concourse & Part of York East Teamway – Part 8 • Part of York East Teamway – Part 21, 22 & 23 • Part of York West Teamway – Part 10 • Part of Bay West Teamway – Parts 19 & 20 	31,267.60

USEP, PACKAGE 1 – EXPROPRIATION LOCATION



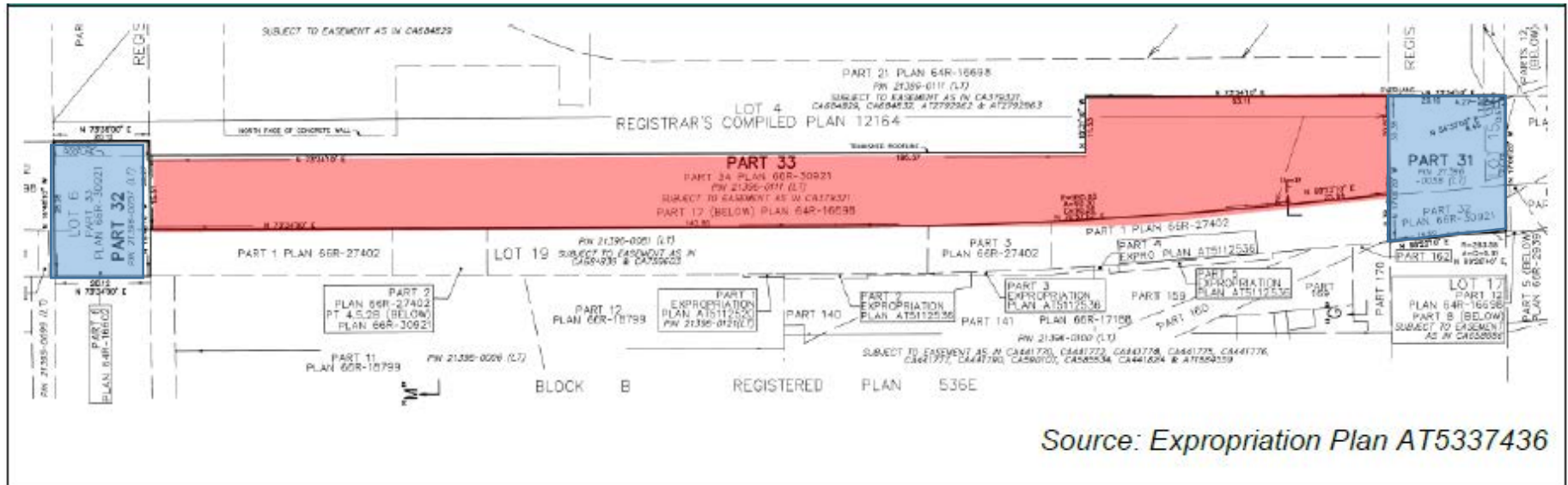
 South Concourse, where fee simple requirement is mostly unexcavated area located at elevation 78.40 below the south end of the Union Station Rail Corridor and extends from York West Teamway to Bay West Teamway

LOCATION OF FEE SIMPLE PARTS EXPROPRIATED IN THE SOUTH CONCOURSE AREA



- South Concourse, where fee simple requirement is mostly unexcavated area located at elevation 78.40 below the south end of the Union Station Rail Corridor and extends from the York West Teamway to the Bay West Teamway
- Truck Tunnel at elevation 78.40, where Parts 3 & 9 are excavated and Parts 6 & 7 are unexcavated

LOCATION OF FEE SIMPLE AIR SPACE PARTS EXPROPRIATED IN THE SOUTH CONCOURSE AREA



Source: Expropriation Plan AT5337436

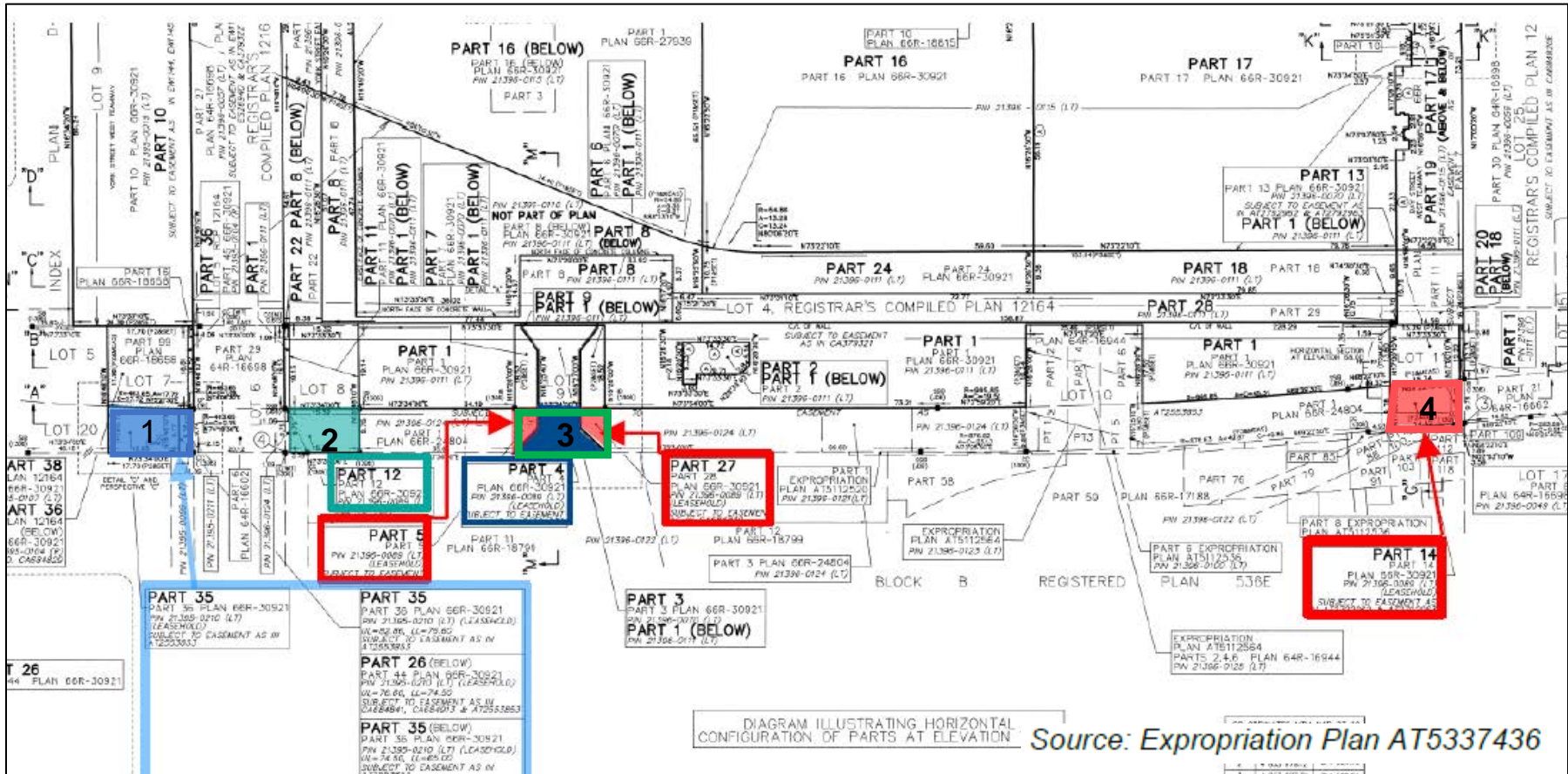


Air Space between York Street & Bay Street (Elevation 91.60, 100.00 and 103.00)



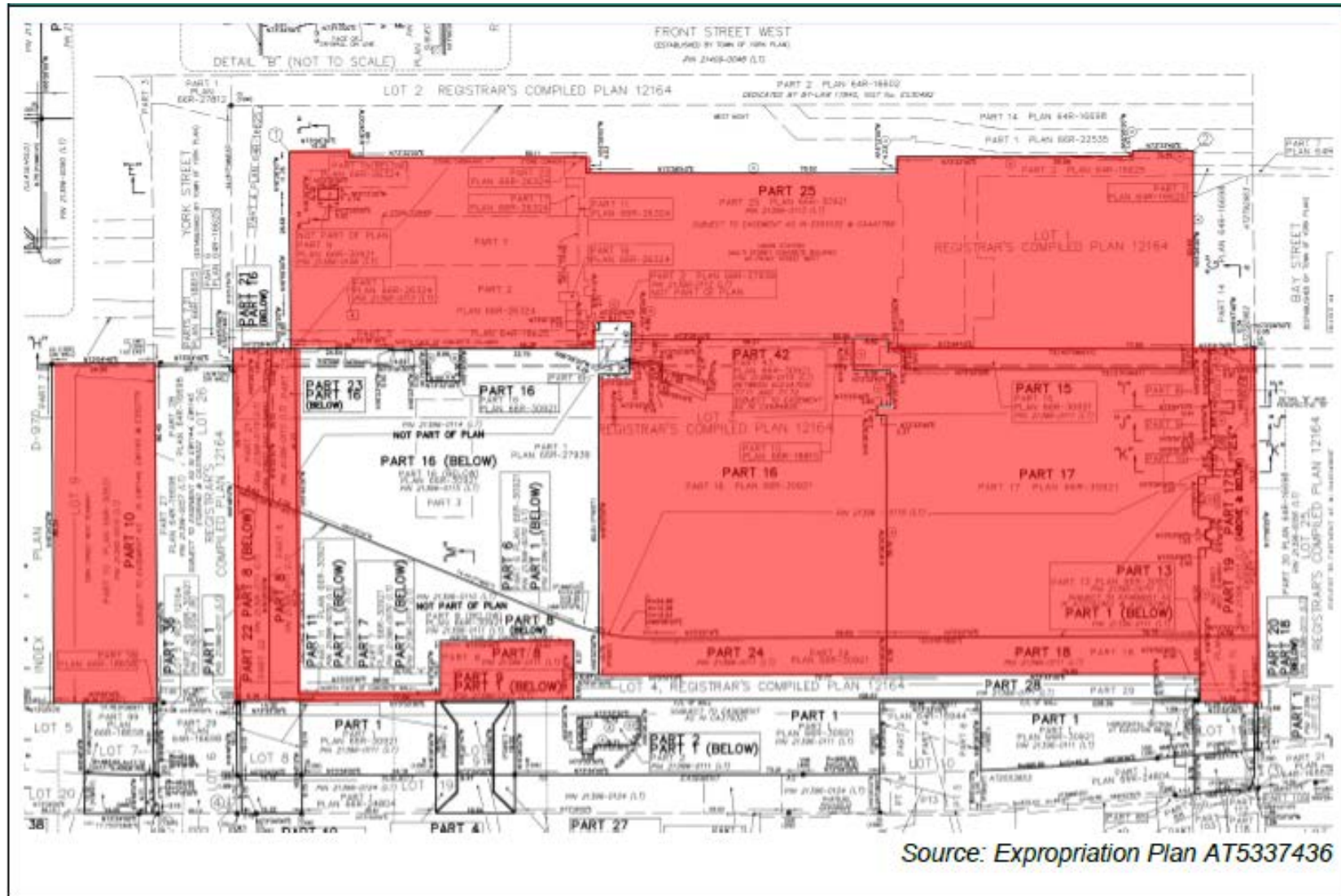
Air Space above York Street & Bay Street Viaducts (Elevation 82.86, 91.60, 100.00 and 103.0)

LOCATION OF LEASEHOLD INTEREST PARTS EXPROPRIATED



- 1 South portion of the York West Teamway which is used for pedestrian flow
- 2 South portion of York East Teamway which is used for pedestrian flow
- 3 Portions of Truck Tunnel (main portion is excavated and the rest unexcavated)
- 4 South portion of the Bay West Teamway, also used for pedestrian flow

LOCATION OF TEMPORARY EASEMENT PARTS EXPROPRIATED



Various parts located throughout Union Station at elevation 78.40 and include the Head House, Via Concourse, Bay Concourse, York East Teamway, York West Teamway, and Bay West Teamway