

**HL20.1.3**

**Submission from Dr. Andrew Morris**

# COVID Situational Awareness Tool

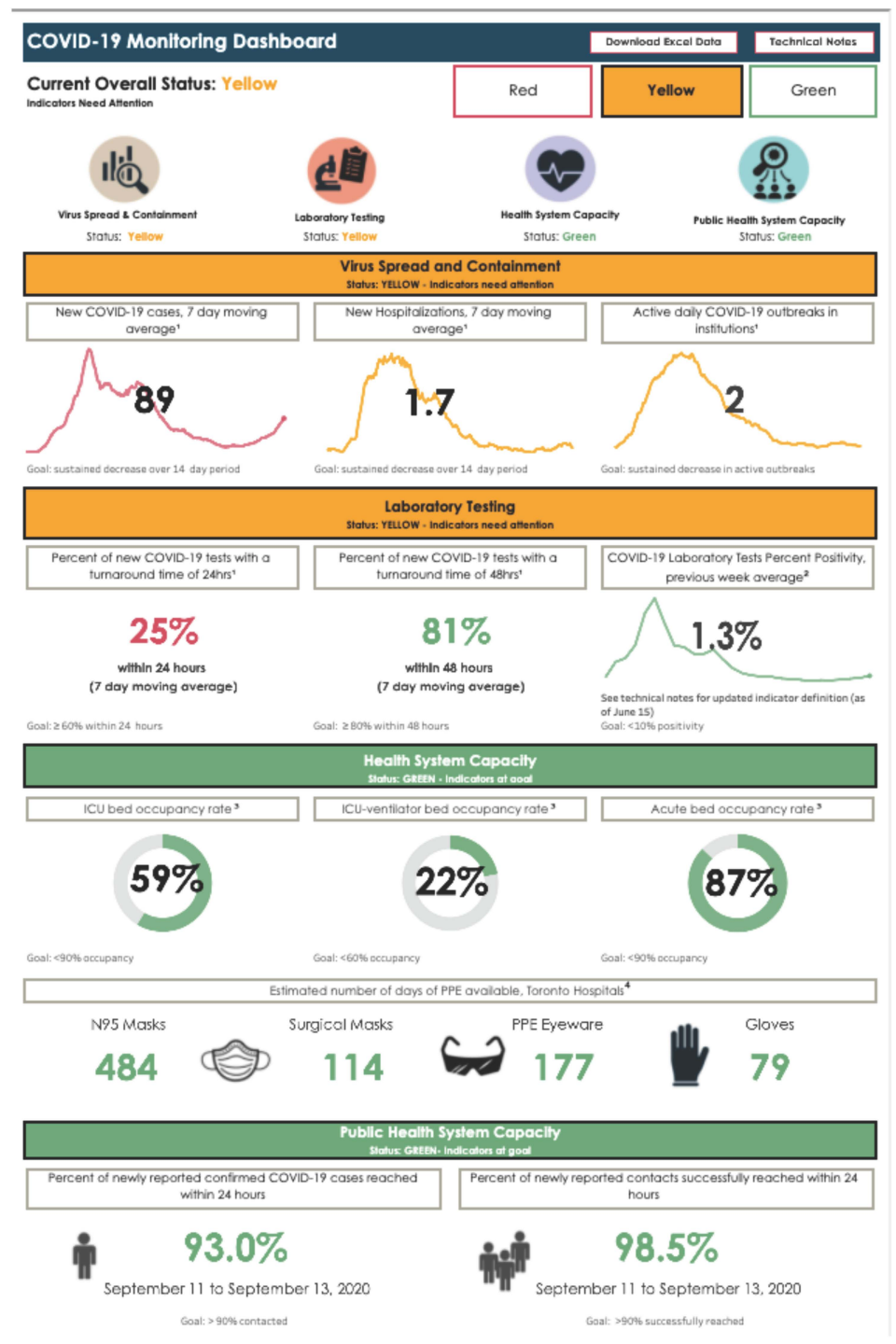
Drs. Andrew Morris (presenting) and Dominik Mertz

Toronto Board of Health

September 21, 2020 9:30

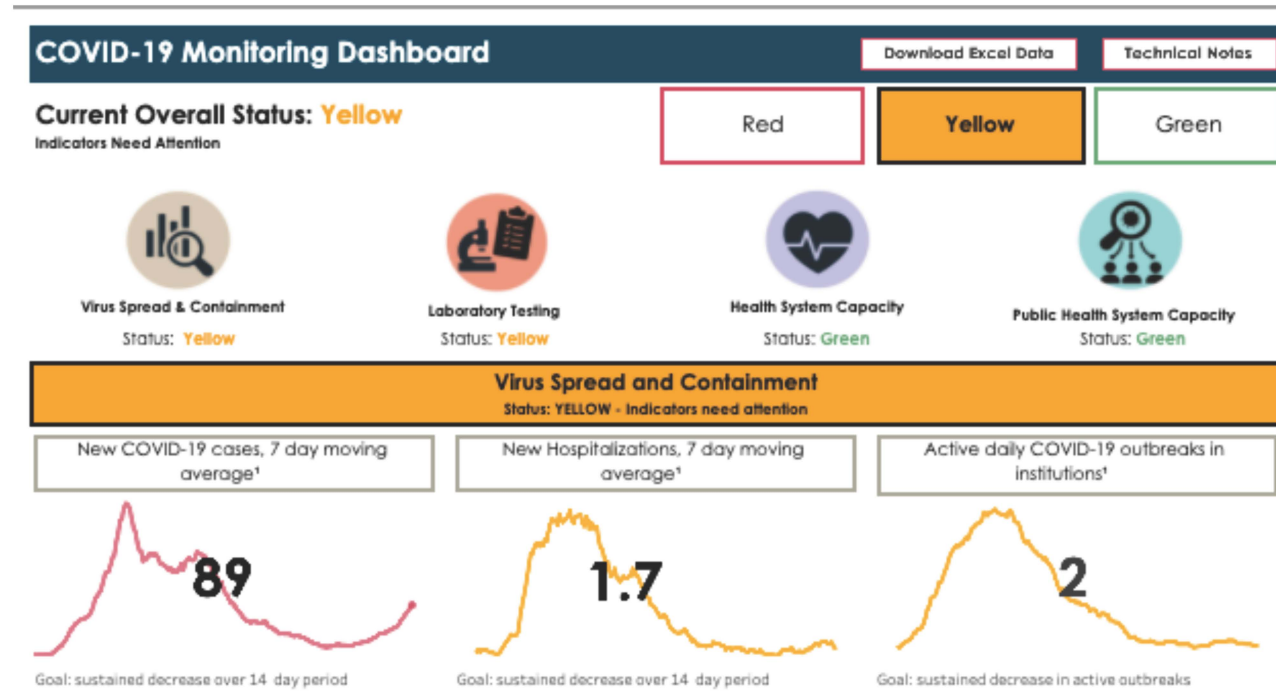
# Current Status

- Toronto Public Health is, perhaps, the most transparent and data-driven public health unit in the province
- on the right is the COVID-19 monitoring dashboard
- not all data used by TPH is presented on this dashboard
- despite all this, TPH could improve utilization and visualization of data



# Use of Targets

- existing targets are modest, and not supported by existing evidence



- Virus Spread and Containment** sets a target for sustained decrease, but doesn't gauge various increases (e.g. replication,  $R(t)$ )
- overstates relevance of hospitalizations (a lagging indicator)

# Domains Considered

- **Health System Capacity** ignores known and emerging challenges (e.g. workforce, essential medications)
- **Public Health Capacity** should indicate workforce for demand, and identify inability to identify contact source as an important vulnerability
- **Factors fostering isolation/quarantine** are not considered as an vulnerability (which, TPH HAS identified with Isolation Hotel)

-- 18.Aug

— 18.Sep

### Community Status

