

PB15.7.3

1150 EGLINTON AVE. EAST

CROSTOWN BLOCK 12



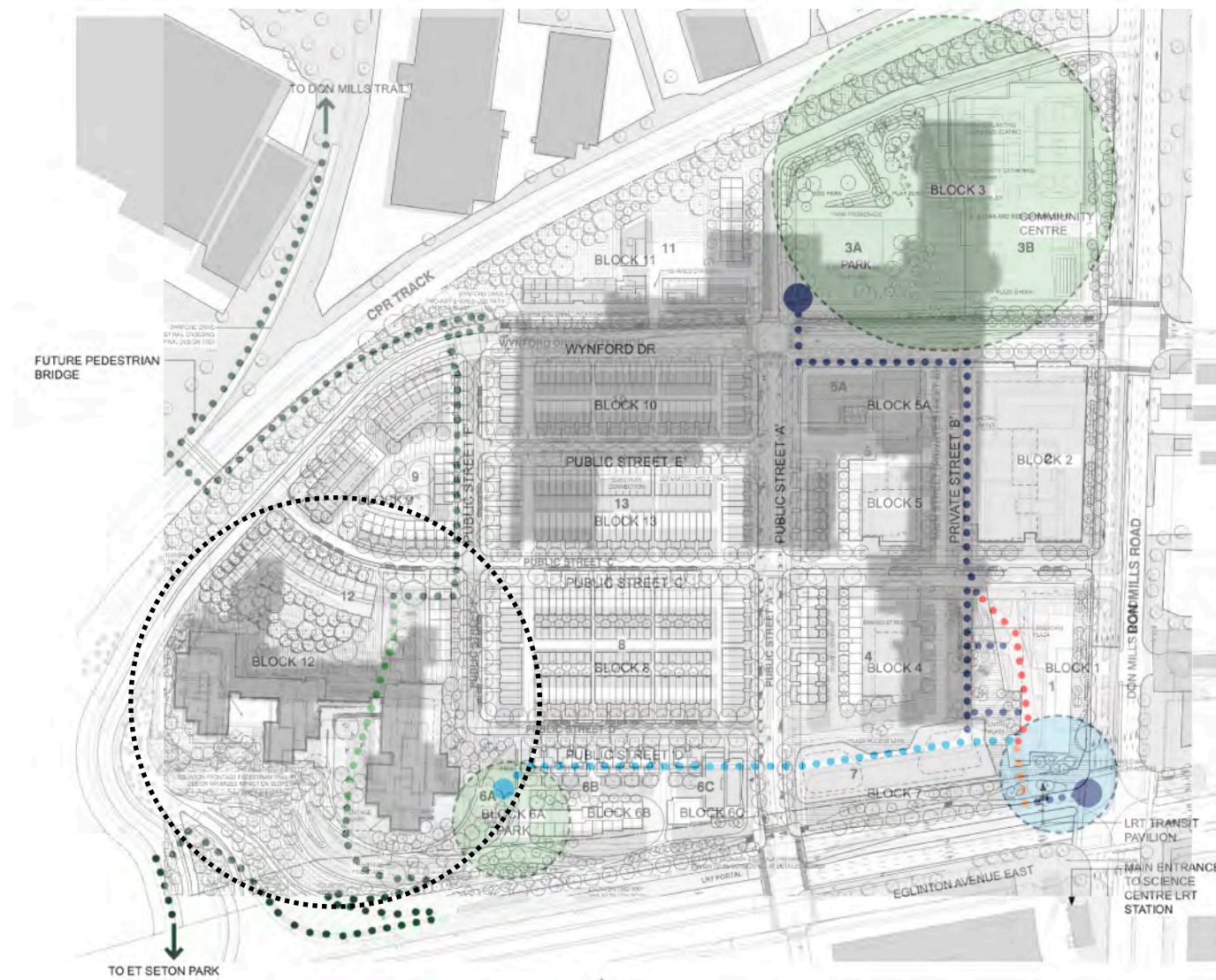
Preservation Board Meeting

Thursday July 02 2020

Eglinton Ave. East and Don Mills Road between 1951 - 1967



(1967)



1150 Eglinton East, and 844 Don Mills - building footprints superimposed on current plan.

Development site

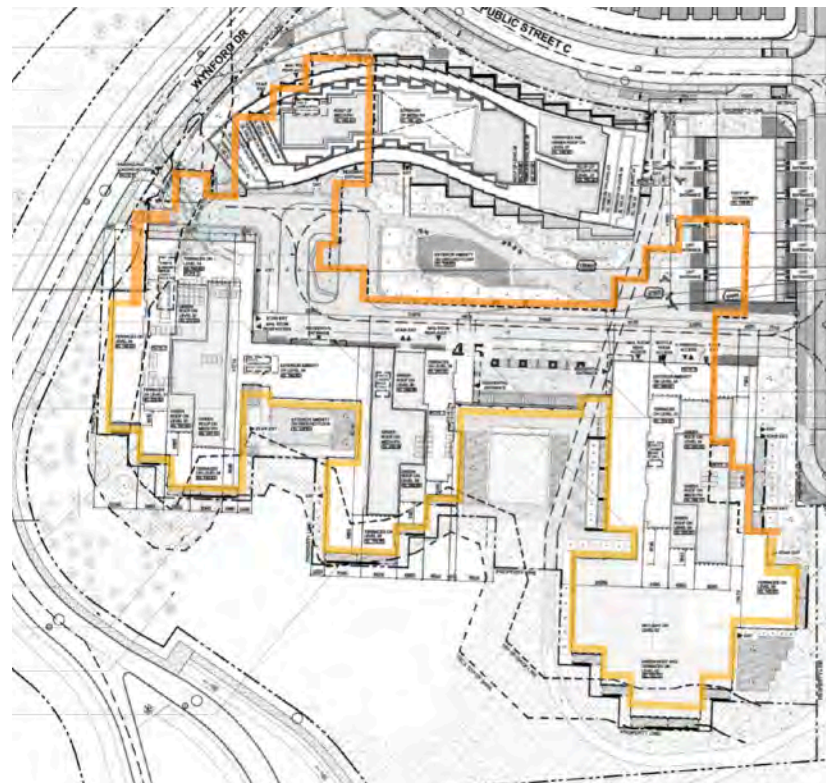


1150 Eglinton Avenue East - IBM Canada Headquarters

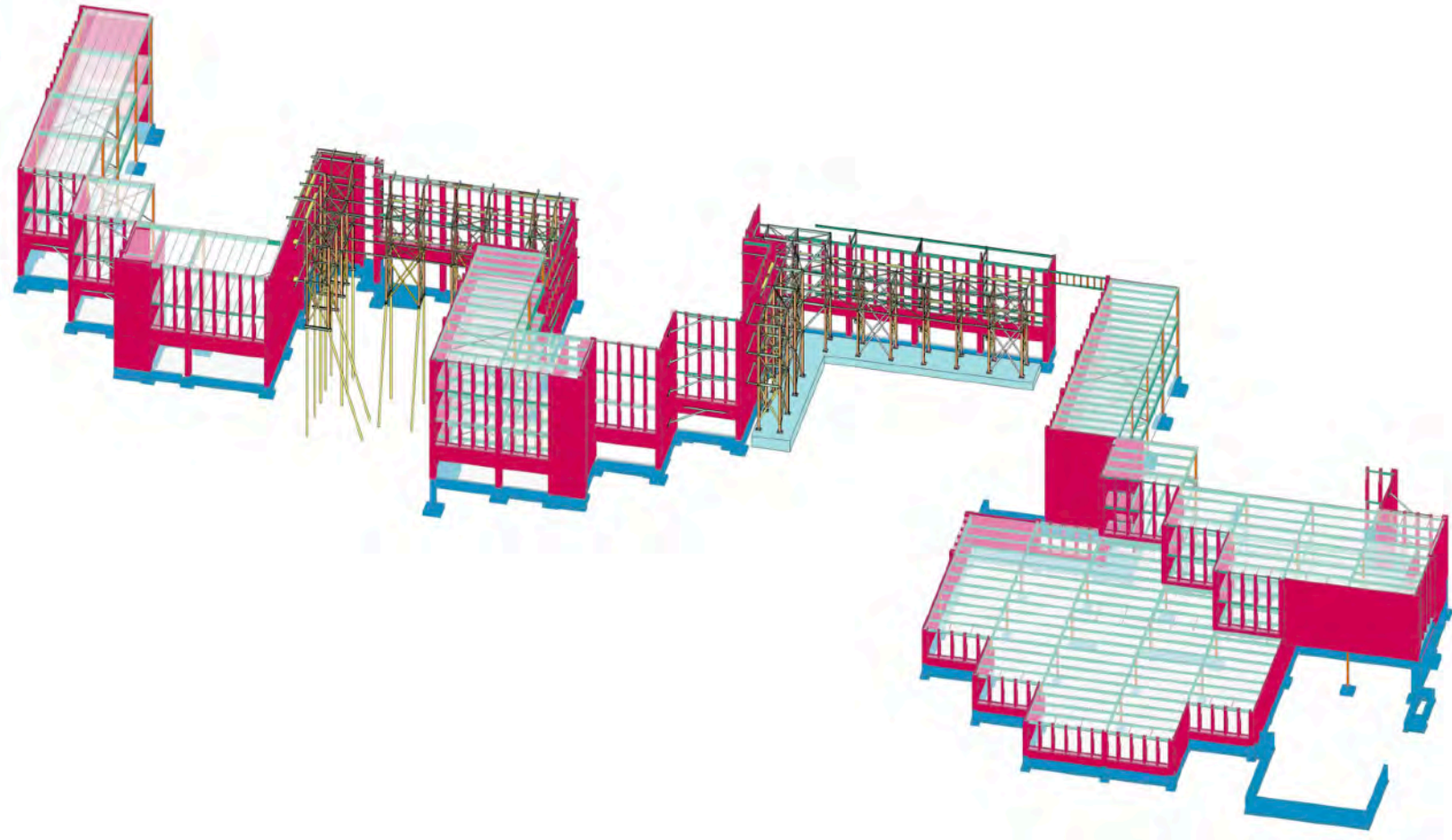


Designed by John B. Parkin Associates, Completed in 1966-67

1150 Eglinton Avenue East



Over 550m of fabric (43+ planes) retained along the Eglinton Avenue East frontage.



Proposed Retention Structure



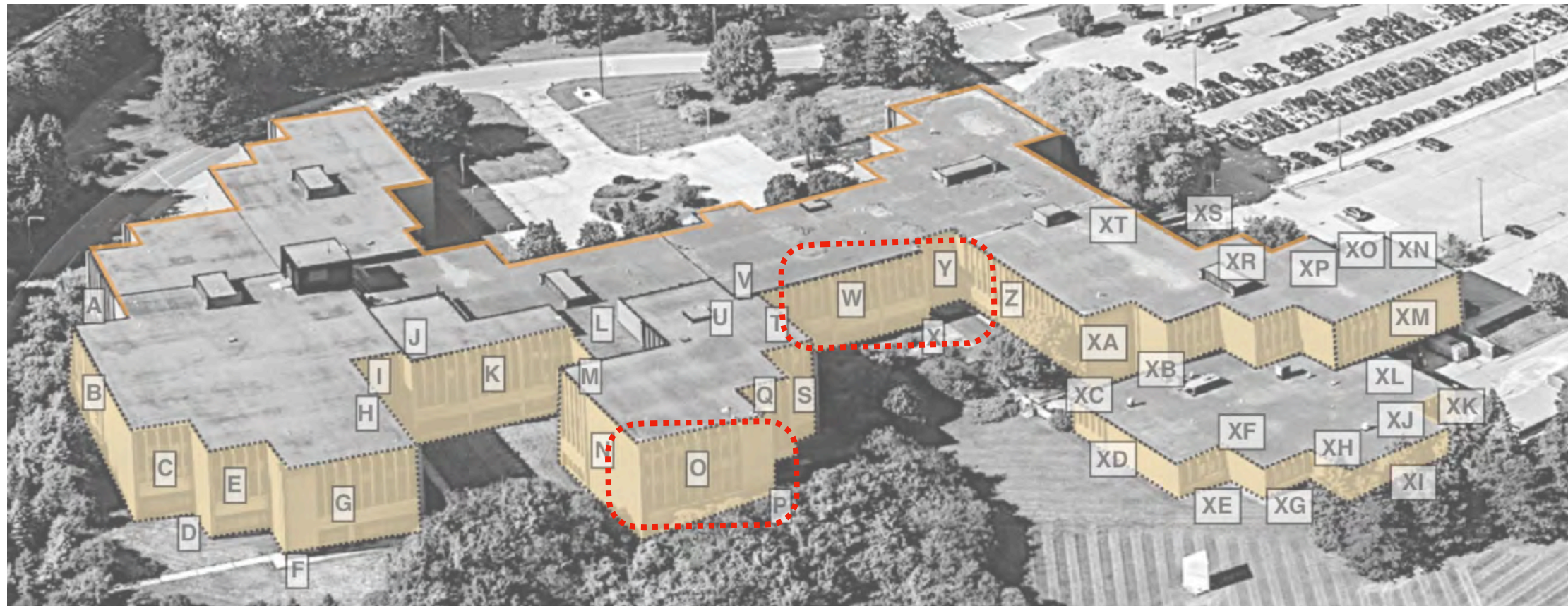








Response to Site Plan Approval Application comments:

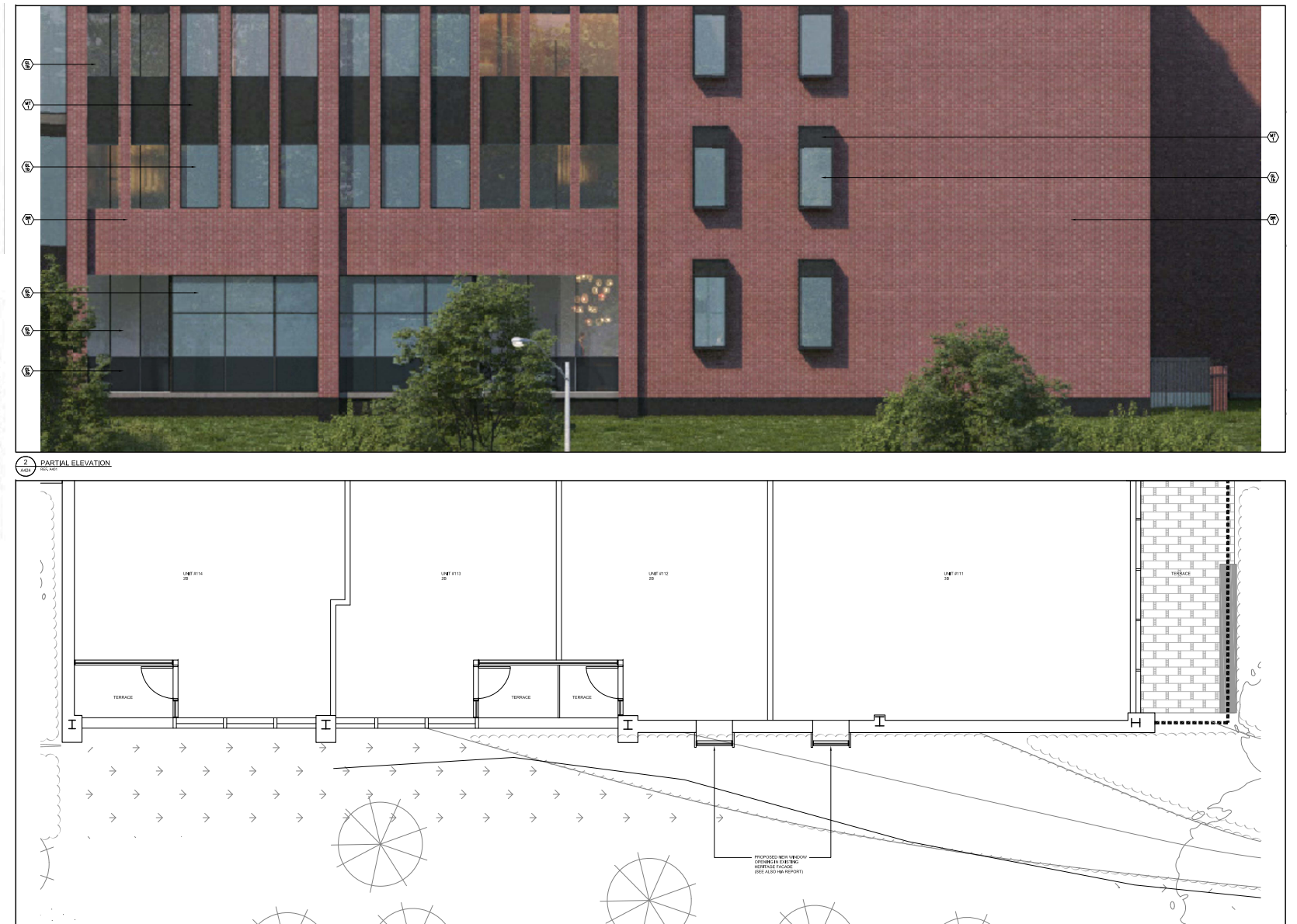


Revisions to elevation

Previous west elevation:



October 12, 2017, and April 12, 2019 DRP



Elevation revised to maintain visual rhythm of the heritage façade



Previous elevation:



Revisions to free-standing wall

